

# INDUSTRIAL SOLUTIONS UK

ISSUE 686 • May 2025

[www.solutionspublishing.co.uk](http://www.solutionspublishing.co.uk) [www.facebook.com/solutionsuknews](https://www.facebook.com/solutionsuknews) @Publishing\_2016

## BTA DRILLING: BRAZED VERSUS INDEXABLE TOOLING

Deep hole drilling applications can be approached in several ways, but one of the most effective methods is often BTA drilling

Find out more on 18-19

### IN THIS ISSUE

RM Fowler  
see page 13

Interface Force  
see pages 14-15

Service Sealing Solutions  
see pages 16-17

UNISIG  
see pages 18-19

Davies Turner  
see page 21

ERG  
see page 22

### BUILDING UPDATE

Wallbed Systems  
see pages II-III

**POWERING THE FUTURE OF  
MOTION CONTROL**  
see page 3

***Orientalmotor***

**FACILITIES TO COMPLIMENT YOUR BUSINESS**  
UK'S #1 SUPPLIER OF PREMIUM PORTABLE TOILET & SHOWER BLOCKS  
see page 13



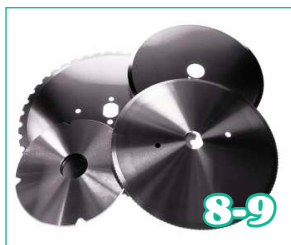
# Contents

Issue 686 • May 2025

## Whats Inside



**CML Innovative Technologies**  
LED Signal Lamps for All  
Industrial Applications



**Camb Machine Knives**  
Machine Knives Commitment to  
Excellence



**Magog Industries**  
Plastics & Rubber Industry



**Service Sealing Solutions**  
Sealing Solutions



**UNISIG**  
Deep Hole Drilling



**Davies Turner**  
Logistics

## On the Cover UNISIG



**18-19**

## Editors Comments

### Hello & Welcome to Issue 686 of Industrial Solutions UK!

The team at Industrial Solutions UK has been working extremely hard to bring you an issue that is full of innovative and exhilarating companies and we are very excited to share their success and achievements with you.

We have searched the length and breadth of the UK to bring you some of the most ground-breaking innovations and this month, we are overjoyed to be highlighting the activities of UNISIG and Davies Turner.

Firstly, we would like to focus on the accomplishments UNISIG who this month features on our front cover!

Secondly, we are featuring Davies Turner with the 'Company of Choice' profile following their impressive performance over the years. For more information, turn to page 23.

I hope you enjoy reading this issue of Industrial Solutions as much as we have enjoyed bringing it to you. Happy reading and we hope to see you for the next edition!

**Ian Hayward, Editor**  
INDUSTRIAL SOLUTIONS UK

## Contacts

**Editorial**  
Ian Hayward, Editor  
T 0121 241 8788  
info@solutionspublishing.co.uk

**Accounts**  
Accounts Manager  
T 0121 681 0935  
accounts@solutionspublishing.co.uk

**Production**  
Production Manager  
T 0121 241 8788  
production@solutionspublishing.co.uk

Industrial Solutions UK is based on the belief that our customers needs are of the highest priority and the utmost importance, with this in mind our team of highly dedicated staff work around the clock to make sure that those needs are always met.

For more information or format requirements, please see our [Media Pack](#).

For all advertising & sales enquiries, please contact Ian Hayward on: **0121 241 8788**, email: [info@solutionspublishing.co.uk](mailto:info@solutionspublishing.co.uk) or visit: [www.solutionspublishing.co.uk](http://www.solutionspublishing.co.uk)

**FIND US ON:**



Sponsored by **UNISIG** on pages 18-19  
DEEP HOLE DRILLING SYSTEMS

## BUILDING UPDATE



**Wallbed Systems**  
Storage Space

**II-III**



**Bluerun Ltd**  
Custom Made Joinery

**V**



**Paramount Waste**  
Waste & Dust Extraction

**IX**



**Independent Access Sales**  
Consulting & Platforms

**XIII**



# Oriental Motor: Powering the future of Motion Control

**F**ounded in 1885, Oriental Motor is a Japanese manufacturer of high-quality electric motors and drives with vast experience and expertise in supplying the automation sector. Known as a global entity, Oriental Motor is represented worldwide in many countries with subsidiaries and sales offices across Europe, America, Asia, Canada, China, India, Japan, Korea, Taiwan, Malaysia, Thailand, and Singapore.

For decades, Oriental Motor has been committed to a business style that involves responding to the needs of engineers around the world as they develop and improve new products and equipment in the industries of food, transportation, industry, and medicine.

It's mission, to provide support through its motion control systems – via hardware, software and human aspect – for engineers who strive to take the first step to make tomorrow better, reflects in the company's values, enabling it to deliver experiences that excite and surpass expectations, providing customers with the 'WOW' factor.

Alongside its extensive after sales support to ensure smooth integration into its customers manufacturing, the Oriental Motor product range includes Closed loop Stepper Motors equipped with multi turn mechanical absolute encoders, Linear and Rotary Actuators with absolute encoders for high accuracy and sensorless positioning, Brushless DC Motors

that offer excellent speed and torque stability in a compact package, AC Induction Motors with high IP ratings and high energy efficiency, Open Loop Stepper Motors with industry leading low vibration and noise levels, Industrial Fans, and Servo Motors with tuning free setup. All products are available in a range of AC and DC voltages, with various international safety standard certifications.

The aSTEP AZ Series stepper motors offer high efficiency, low vibration, and incorporate our newly developed Mechanical Absolute Encoder for absolute-type positioning without battery backup or external sensors. These closed-loop stepper motors provide performance without hunting or gain tuning and are available with a built-in controller or pulse input driver, substantially reducing heat generation through high-efficiency technology.

Another product that is worth noting is the 750-watt Servo Motor, suitable for high-speed, high-precision positioning over long distances, allowing for positioning operation with excellent acceleration and reliability. Servo Motors are specialised for high-response, high-precision positioning. As a



motor capable of accurate rotation angle and speed control, it can be used for a variety of equipment.

Sustainability practices are implemented at every stage of Oriental Motor's product lifecycle. With a dedication to reducing their company environmental footprint, Oriental Motor is committed to environmental conservation, believing that innovation and sustainability go hand in hand. This commitment is engrained through a promise to provide energy-efficient products, continue its sustainable development, enhance its green manufacturing, and expand on its global responsibility, paving the way towards a greener future.

For more information, please see below:  
T 01256 347090  
[www.orientalmotor.eu/uk](http://www.orientalmotor.eu/uk)

## Odour Control & Biogas Cleaning Units



**ANUA Clean Air**  
UK

+44 (0)1450 420017

[www.anuacleanair.co.uk](http://www.anuacleanair.co.uk)

## Leader in Odour Control and Biogas Cleaning Units

Anua Clean Air International offers proven, patented clean air bio-technologies, which provide best-in-class process performance with the lowest utility and life cycle costs.

Anua Clean Air International manufactures and installs Mónafil, Mónashell and CrumRubber biofiltration systems. These are patented proven systems for the treatment of municipal and industrial odour and VOC air emissions.

Mónashell – Mónafil – CrumRubber – Mónasorb – Skid Mounted Odour Control Units – Media Replacements – OCU Health Checks



# We have the solution.

Position. Transport . Rotate



## ***Oriental motor***

Oriental Motor (UK) LTD  
[www.oriental-motor.co.uk](http://www.oriental-motor.co.uk) – [info@oriental-motor.co.uk](mailto:info@oriental-motor.co.uk) – 01256 347 090





MORE THAN  
**20.000 MOTORS**  
AVAILABLE FROM STOCK!

**24/7  
EMERGENCY  
SERVICE**

**CUSTOM  
SOLUTIONS  
FOR ELECTRIC  
MOTORS**

## SUPPLIER OF LARGE MOTORS FOR ALL DRIVEN EQUIPMENT APPLICATIONS

**SQUIRREL CAGE MOTORS | SLIP RING MOTORS | DC MOTORS**

### **Motors up to 25 MW and 13.8 kV**

- Low voltage slip-ring and squirrel cage motors up to 3,000 kW
- Medium voltage slip-ring and squirrel cage motors up to 15,000 kW
- Direct current motors up to 2,000 kW
- Frequency converter-proof drives
- In-house load test facility up to 13.800 V, 2.300 kVA, 120 Hz

### **Customized special designs**

- Custom designs for special applications and operating conditions
- Optimized motor design for higher efficiency
- Mechanically and electrically interchangeable motors
- Commissioning worldwide

**MENZEL Great Britain Ltd. | UK Branch Office**

Martin Rooney | Tel.: +44 1664 500 844

[martin.rooney@menzelgb.co.uk](mailto:martin.rooney@menzelgb.co.uk)



[menzel-motors.com](http://menzel-motors.com)



**AROUND THE CLOCK,  
AGAINST THE CLOCK!**



## Oliver Valves creates industry-first solution for high-pressure topside application

The recently qualified Oliver Valves 1/2" Bore Topside Manual Gate Valve has provided our client and end-user with a solution for use in an industry-first high-pressure development in the Gulf of Mexico.

### The challenge:

The project required 20ksi DBB Isolation for vents, drains and chemical injection points around the TUTA (Topside Umbilical Termination Assembly), Boarding Valves and Production Manifold. Process operating pressures were expected to be around 16,500psi. A fully rated API 20k valve as required by the customer's specifications. Small-bore instrumentation needle or ball valves were available to the customer at working pressures of 20,000psi but a full through bore gate valve, such as the one above, was a new market requirement:

- Fully rated PR2 Tested API 20,000psi
- Fire Safe & NACE Compliant
- Process Connection – Compact Flanged
- Instrument Connection – Cone & Thread
- High Alloy Construction
- 1/2" Bore
- Gate Isolation with Needle Vent because ball deflection had been noted as an issue by the customer with high-pressure ball valves.

### Our challenge:

As the supplier of choice, Oliver's were required to design and build a valve very quickly to meet the strict application and the project timeline. All of the considerations below had to be met:

- Conceptual Design and Engineering Calculations
- Arrangement Drawings
- Size & Weight Considerations
- Detailed Bill of Materials
- FEA Analysis
- PR2 Testing
- Fire Testing
- 3rd Party Witness testing
- Customer approval of all test documentation, procedures and FEA
- Prototype; Procurement of materials, Machining, Assembly, Development
- Only a complete, fully tested, and the qualified valve would allow production to begin. Any miscalculation could delay the delivery of the valves and causes serious project impacts. This was roughly 12-months from start to finish.
- Design that would meet BSEE requirements
- Customer confidence



### Solution:

Oliver Valves and their master distributor, AWC Inc., have been a long-time trusted supplier to this customer. They have demonstrated experience in project execution, quality, and specifically the desired technology to meet the requirements of this project. The Oliver Valves team were able to meet and exceed all of the customers' requirements. Collaboration with the customer from an early stage in the project resulted in a mutually beneficial solution.

### The result:

Oliver Valves will be supplying multiple 1/2" Manual Gate Valve DBB's to a Gulf of Mexico Project. In this project application, the 1/2" Gate Valve DBB will be used to drain the 20,000psi rated pipework surrounding the large boarding valves on a semi-submersible floating production unit. First oil is anticipated 2024. The high-pressure rating of this design allows our clients and end-users alike to access other high-pressure resource opportunities across the industry.

- Working Pressure: 20,000psi (1,379bar)
- API 6A 21st Edition Appendix F PR2 Compliant.
- Independently Witnessed and Approved Qualification.
- Qualified Temperature Range -29oC to 121oC operable.
- 1/2 Turn Manual Operation.
- It can be offered in a single isolate or DBB format utilising a 20Ksi OS&Y Vent.
- Qualified in ASTM A182 F55 with UNS N07718 & N06625 Trim.
- Fire Tested Following API 6FA 5th

**Please contact Oliver Valves Ltd on: [www.valves.co.uk](http://www.valves.co.uk) or [sales@valves.co.uk](mailto:sales@valves.co.uk) for further information. Our business is trusted globally by all the major Oil & Gas operators for our reliability under pressure and our it CAN be done approach to client challenges.**



### World-leading

Valves for Hydrogen, Carbon Capture, Topside, Subsea, and Pipeline Applications.

## olivervalves

### Instrument & DBB Valves

- Manifolds, Needle, Check and DBB Valves to 22.5K psi
- Cryogenic
- Severe Service 650°C, 10K psi
- Forged & Bolted Construction



## olivertwinsafe

### Pipeline Valves

- 1" to 20" Bore Size
- High Temperature
- High Pressure
- Cryogenic
- API 10K Design



## oliverhydcovales

### Hydrogen & Carbon Capture Valves

- Instrumentation, Ball, Needle and DBB Valves for Hydrogen and Carbon Capture Applications
- Pipeline Ball Valves upto 18"
- 10K Ball Valves for Hydrogen Fuelling Stations



## olivervalvetek

### Subsea Valves

- Diver & ROV Operated Needle Valves
- Ball Valves Upto 15K
- Manual & Hydraulic Parallel Slide Gate Valves 3/8", 1/2", 3/4" and 1"



We Manufacture Valves for Global Energy Projects.  
Find Your Local Supplier Call +44 (0)1565 632 636

## olivervalves



### Reliability Under Pressure

+44 (0)1565 632 636 | [sales@valves.co.uk](mailto:sales@valves.co.uk)  
[www.valves.co.uk](http://www.valves.co.uk)

Oliver Valves Ltd Parkgate Industrial Estate,  
Knutsford, Cheshire, WA16 8DX, United Kingdom

# CML readies itself for a surge of new market opportunities

**C**ML Innovative Technologies (CML) is the leading manufacturer of LED signal lamps for all industrial applications and has been working with light since 1931. As a market leader in its field, CML was one of the first companies to introduce LED lamps and now has one of the broadest ranges of miniature lighting products in the world. "In 2004, the company became CML and continued to grow, establishing its international pedigree with two factories in Guangzhou, China, and Sibiu, Romania. While CML remains in Bury St Edmunds, the group was acquired by Spain's Grupo Antolin, which employs 28,000 people globally," stated Roger Neal, Commercial Manager.

From lamps for signalisation, panel mount indicators, LEDs, LED displays, medical lamps, and aviation lamps, CML provide light to an abundance of markets and pride itself on the ability to be as flexible and adaptable as possible in the manufacture of their own branded products to meet customer specifications and demand.

"CML in the UK focuses on specialist applications mainly manufacturing lighting solutions for automotive, aviation and general industries. We manufacture a standard range of products and customer-specific solutions from customer concept to production, including in-house design. Our portfolio runs to thousands of miniature lighting options in size, function, colour, finishes and voltages," said Roger.

CML is continually developing its own product range and has recently witnessed positive movements from customers seeking more product value. Some competitors fall short as they only provide a face value market product however, CML offers further manufacturing capabilities such as the add-on of cables and connectors to a product, which carries weighted value. The ability to meet customer specific requirements has attracted much attention in the industry as the manufacturing processes available from CML dramatically reduce production time through its made to order service.

"Nothing is impossible for us, we produce to customer demand working with customers. We have done work for individual airlines and collaborated



with their design division to manufacture LED replacements for incandescent lamps. There is a cockpit lamp, which we have produced for years, and there can be up to 1,200 different pieces per aircraft of that particular type. Our possibilities are endless," remarked Roger.

You will find CML products all over the world, from medical applications to gaming industries, by having full control of the entire value chain enables CML to be flexible with our clients' requirements. Since COVID-19, 50% of the business has come from industrial sectors. "Automotive sales have improved in the last year and the industrial side has witnessed significant growth. The pandemic has only made us stronger as a company, and as a result, our flexibility has generated an upturn in demand and helped create new business opportunities," said Roger.

**For more information, please see below:**  
**T 01284 714700**  
**[uksales@cml-it.com](mailto:uksales@cml-it.com)**  
**[www.cml-it.com/en](http://www.cml-it.com/en)**



## High Quality Panel Mount Indicators

CML IT continues to be the number one supplier of panel mount indicators, LED lamp replacements and LED tower lamp solutions. PMI highlights include:

- Plastic and metal bezels with a wide range of options in stock.
- Development of custom solutions.
- IP40 and IP67 ratings.
- UK manufacturing facilities.



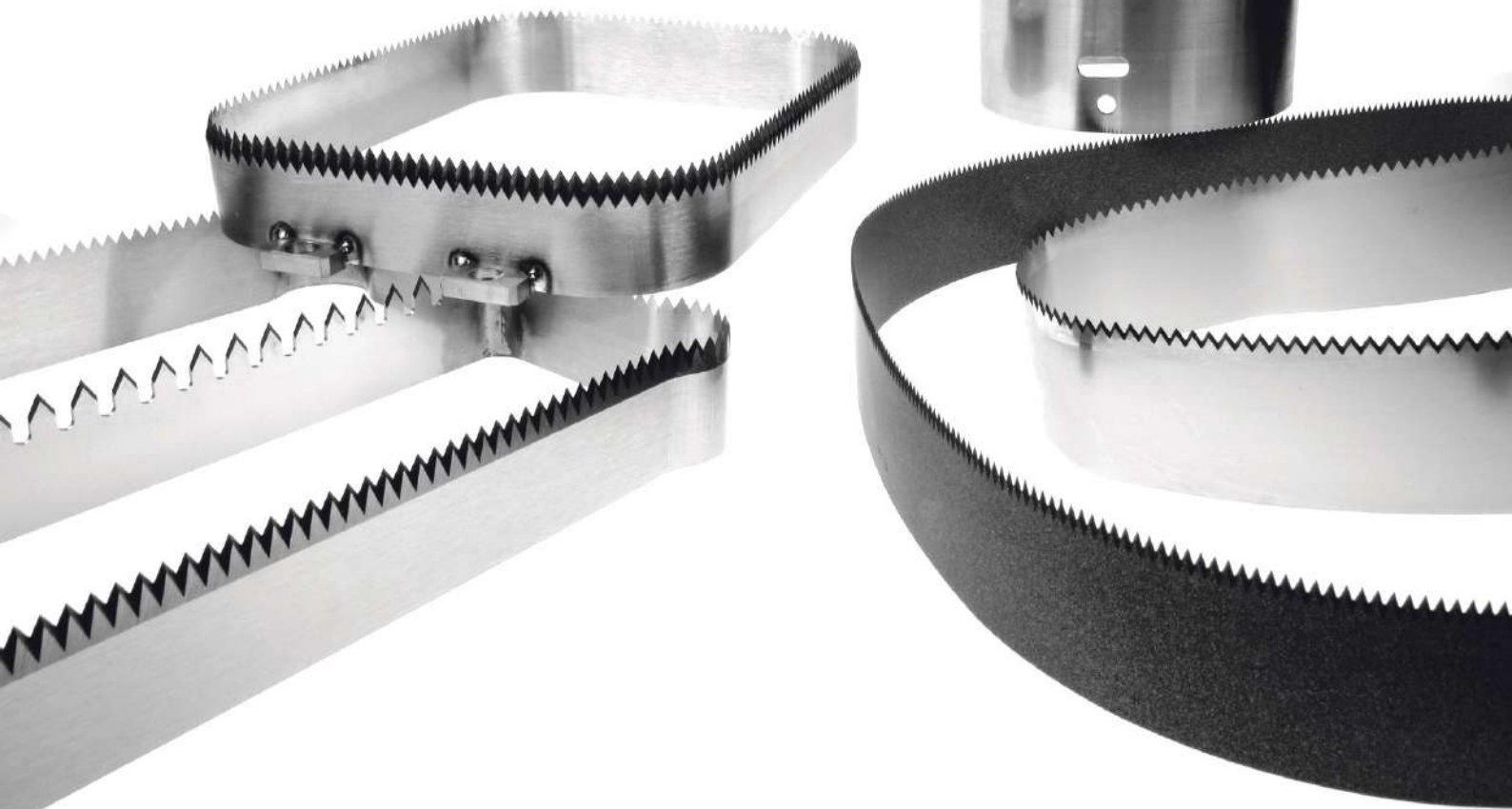
**Contact our Customer Services department to discuss your requirements today.**



**Visit our website at: [www.cml-it.com](http://www.cml-it.com)**

**CML Innovative Technologies Ltd,**  
69/70 Eastern Way, Bury St Edmunds,  
Suffolk, IP32 7AB, United Kingdom  
Tel: +44 (0)1284 714700  
email: [uksales@cml-it.com](mailto:uksales@cml-it.com)





# CAMB Machine Knives International: Overcoming Adversity with Unwavering Commitment to Excellence

In this issue of Industrial Solutions, we are delighted to feature CAMB Machine Knives International in recognition of their unwavering Commitment to Excellence in consistently delivering high-quality knives to the global machine knives industry.

Founded in 1989, CAMB Machine Knives has built a strong reputation across a diverse range of industries over the years. From its humble beginnings to its current international presence, the company has expanded significantly, establishing a global network of exporters, carriers, and offices in locations including Europe, New Zealand, South Africa, and many other countries.

The journey hasn't always been without challenges. Yet, CAMB has consistently overcome obstacles, maintaining its position as an industry leader. This award stands as a testament to the company's dedication to excellence and its ongoing commitment to continuous improvement, even in the face of adversity.

Neil Chapman and Darren Hitchings were appointed Technical Directors at CAMB Machine Knives in 2022 when Jerry Milner resigned. Unfortunately, in June of 2023 founder/owner Jerry Milner passed away.

We believe that Neil and Darren have shown great courage and strength to take on the company, and elevate it to new heights whilst experiencing such adversity throughout such a short period of time. Neil commented, "Jerry was more than just a boss to everyone who worked here; he was a friend and a mentor. Now, we have big shoes to fill."

Through hardship, Neil and his team have done extraordinarily well to successfully steer the company forward and to achieve a record-breaking year. "Our forecast was conservative as there has been



an increase in sales for the last few years due to COVID-19 and the uncertainty of businesses staying open during lockdown. We found many customers wanted to keep stocks on-site therefore, sales increased and we expected this to return to normal and sales decrease a little," added Neil.

Since the unfortunate passing of Jerry, Neil was appointed as Director alongside Darren, who between them, have a combined 40 years of experience in offering the same high-quality service to customers around the world. Together, they have worked hard to boost employee morale and attract new business since Jerry passed.

CAMB produces an extensive range of high-quality machine blades for all industries that come in many different types, including: Circular Knives, Special Shape Knives, Top Dished Knives, Bottom Knives, Toothed Knives, Guillotine Knives, Granulator Knives, Confectionary Knives, Tray Form Blades, Anvils, and much more, from the food industry to reclamation.

"We hold a lot of stock consisting of over 500 different knives, mostly for the poultry and food industry. This means we can accommodate custom orders that require quick lead times by modifying our

blades for a specific use case. We also supply circular Microteeth knives for the poultry industry, and testing has shown our wear resistance is very good and with very competitive pricing," added Neil. These knives, in reference, include Circular Scalloped Microteeth Knives and replacement knives for many makes and models of machines.

With lots more in store for the company in 2025 and beyond, Neil explained some of their short and long-term goals. "In the short term, we are reviewing every process to help us streamline processes. In the long term, we want to invest in new machinery to expand our machining capabilities. We are extremely honoured to receive such an award, thank you. It is great to see our hard work over the last 12 months has paid off and getting the recognition the staff deserve."

**For more information, please see below:**  
**T 01454 322178**  
**[sales@camb-knives.co.uk](mailto:sales@camb-knives.co.uk)**  
**<https://www.camb-knives.co.uk>**





# CAMB MACHINE KNIVES

*"A Cut Above the Rest"*

## QUALITY IS OUR GUIDING PRINCIPAL

With over 34 years of experience supplying the machine knives industry. CAMB Machine Knives was established in the UK in 1989 and aimed to provide consistently high quality knives and service to a broad range of industry sectors. Based on these guiding principals, CAMB Machine Knives has flourished and grown throughout Europe, USA in 25 countries worldwide establishing a reputation for high quality products and service.

## CAMB MACHINE KNIVES INTERNATIONAL REACH

CAMB Knives International really does have an international reach with a network of exporters and carriers – with offices both in the UK along with agents in Spain, Netherlands, Italy, Germany, South Africa and many more so you'll never be far away from a CAMB Knives representative.



## KNIVES FOR INDUSTRY – WE'LL SUPPLY IT

Our range includes many types of blades, but not limited to:

**CIRCULAR KNIVES**

**GRANULATOR KNIVES**

**POULTRY KNIVES**

**RAZOR BLADE KNIVES**

**STRAIGHT KNIVES**

**TOOTHED KNIVES**

**TRAY FORM KNIVES**

**TOP/BOTTOM KNIVES**

**ZIG ZAG KNIVES**

**CAMB MACHINE KNIVES INTERNATIONAL LTD**

Tel: 01454 322178 | Fax: 01454 321172

Email: [sales@camb-knives.co.uk](mailto:sales@camb-knives.co.uk)

[www.camb-knives.co.uk](http://www.camb-knives.co.uk)

MANUFACTURERS AND DISTRIBUTORS OF MACHINE KNIVES TO ALL INDUSTRIES





# Direct Hoist: Delivering peace of mind and performance

In the construction industry, downtime, inefficiencies, and safety issues can cost time and money. That's why choosing the right hoist partner is crucial – and Direct Hoist delivers on all fronts. With a reputation built on reliability, expertise, and service, they specialise exclusively in the hire of goods and passenger hoists for construction projects across the UK.



Direct Hoist isn't just about renting out equipment – they offer tailored solutions designed to keep your project moving safely and efficiently. From initial consultation to installation and support, every step is handled by specialists. Their experience and free site visits ensure that the correct hoist is selected right from the start, preventing costly mistakes.

"Most customers don't know which hoist is best suited to their project," says Josh, Operations Manager at Direct Hoist (pictured right). "That's why involving a hoist specialist early is so important. Choosing the wrong size or capacity can lead to delays and extra costs."

All hoists are rigorously inspected before delivery. Any worn parts are proactively replaced between hires, significantly reducing the risk of breakdowns. Once on-site, delivery and installation are managed by a skilled team of NVQ-qualified hoist installers, further backed by certifications in emergency first aid, working at height rescue, IOSH Managing Safely, and CITB Site Supervision Safety Training. All work is fully compliant with LOLER regulations and BS7212 standards.

Support doesn't stop after installation. A dedicated technician remains available throughout the hire period to provide advice and resolve any issues. Most problems are resolved remotely, saving you valuable time.

"Downtime is rare," Josh explains. "Our hoists are maintained to a very high standard, and our installers understand both mechanical and electrical systems."



If a fault isn't site-related and can't be fixed over the phone, we don't charge for that downtime."

Direct Hoist's commitment goes beyond just equipment – it's about delivering long-term value. "We're not trying to be the cheapest," Josh says. "We're here to do things right – safely and to a high standard. Getting it right the first time always delivers the best value."

With transparent pricing, expert support, and an unwavering focus on safety and quality, Direct Hoist is more than a supplier – they're your trusted partner in construction hoist solutions.

**Contact Direct Hoist:**  
T 01724 781647  
info@directhoist.co.uk  
www.directhoist.co.uk/iso

*\*hoist pictures taken during installation*

- ❖ HIRE
- ❖ SALES
- ❖ SERVICING
- ❖ PARTS
- ❖ REPAIRS
- ❖ TRAINING

# DIRECT HOIST

OFFICIAL UK DISTRIBUTOR OF  
ELECTROELSA HOISTS & MASTCLIMBERS

## Electroelsa



PROUD TO BE A CHOSEN PARTNER ON THE  
REGENERATION OF ALBERT DOCKS, LIVERPOOL

**DIRECTHOIST.CO.UK** ❖ **01724 781647**



## Take sound to the cloud with Quantum from Cirrus Research

For more than five decades, health and safety practitioners have turned to noise monitoring equipment such as handheld sound level meters and personal noise dosimeters to assess noise levels in the workplace. However, with more and more businesses choosing to operate from multiple sites as opposed to across one site, it's possible that these more traditional methods of noise measurement and monitoring may no longer be the most efficient.

### Quantum; the future of noise measurement

Quantum Indoor from Cirrus Research is a powerful noise monitoring solution with built-in cloud connectivity, perfect for continuous occupational noise monitoring, identifying the source and type of noise that is occurring, and highlighting where noise control measures are required.

With this instrument, it has never been easier to measure and monitor workplace noise continuously and remotely across one or multiple sites.

The cloud technology that is built into the Quantum instruments allows health and safety practitioners to connect multiple noise monitors on one account, allowing for data from each noise monitor to be viewed and assessed on one platform. This creates a network of interconnected instruments, whose data can be viewed and analysed side-by-side, removing the need to download information from separate handheld instruments one-by-one.

Additionally, Quantum indoor provides a constant ear to the ground, offering live and historical data round-

the-clock that practitioners can access from anywhere, at any time and on any device. Whether users are on the other side of the planet to where the instrument is installed, or they're stood in the next room, the data is always accessible on demand via the online Quantum portal, powered by MyCirrus.

With a network of cloud-connected noise monitors, the need for users to be physically on-site to measure noise levels is vastly reduced. Cloud-connected monitors, such as Quantum Indoor, can be installed and left to do their jobs completely unattended. They can then be configured remotely to send users real-time alerts when noise events occur, which provides greater control to health and safety practitioners in the workplace.

With Quantum Indoor, you can:

- **Link multiple units** to form a cloud-connected network of noise monitors to make viewing the full picture of your workplace noise impacts easier.
- View your **live and historical data** in the Quantum portal anytime, anywhere around the world on any device.
- Create numerous **audio triggers and notifications** based on your personal set of conditions for acceptable noise emissions, and receive these notifications via email, SMS or push notification.
- Use the **frequency analysis** screen on the Quantum portal to further view and analyse your noise data and better understand the exact nature of the noise.



- **Create detailed reports** directly through the Quantum portal based on direct data captured by your Quantum Indoor units.

### The Quantum Portal; powered by MyCirrus

With the Quantum Portal there are no fixed fees or set up charges. With Cirrus Research, users are offered subscription packages that are flexible to fit in with your noise monitoring programme and your preferred level of usage. These flexible plans means that you have the ability to change your subscription up or down on a monthly basis.

Powered by MyCirrus, this portal is suitable for all Quantum noise monitoring devices, and can also be used with other instruments such as the Cirrus Research Environmental Noise Measurement Kits.

**T +44 (0)1723 891655**  
[sales@cirrusresearch.com](mailto:sales@cirrusresearch.com)  
[www.cirrusresearch.com](http://www.cirrusresearch.com)

## Plastics & Rubber Industry

### Processing & conveying components and equipment

Magog Industries are long established UK designers, manufacturers and suppliers of processing, mixing and conveying screws and barrels. Based in Ware, Hertfordshire, the company operates across the UK, Ireland, Europe and beyond.

Working in partnership with European and UK manufacturers allows for enhanced solutions to include splines, co-rotational shafts, mixer elements and sectional barrels. Magog now offer their latest range in coatings and materials, designed to further enhance longer life and greater resistance in demanding processing where increased proportions of glass reinforced and recycled material is used.

Enhanced coatings specification include: Thin Dense Chrome (TDC) to enhance wear with low friction and is FDA Approved for food process environments. Ceramic Seal coatings reduce porosity and increase plating/coating life 4 to 10 times longer in corrosive environments.

All standard screws and barrels are manufactured in high-grade tool-steel. For example, EN41B steel provides hardwearing performance but also



allows for hard welded bi-metallic alloy flights to be applied at a later time.

Further enhanced specifications for barrels include Hot Isostatic Pressing (HIP) to reduce porosity and increase the density of the barrel surface and can be used as an alternative to Hastelloy or Incoloy when processing, for example using PTFE or Fluoropolymer material.

**For more information, please contact Magog Industries:**  
**T 01920 465201**  
[enquiries@magog.co.uk](mailto:enquiries@magog.co.uk)  
[www.magog.co.uk](http://www.magog.co.uk)

# MAGOG

*From Feed to Form....*

**Screws, Barrels and Precision Components for the Plastics and Rubber Industry**

Single, Twin Parallel or Conical, Multi-start and mixing, we offer a wide choice in Nitride and hardened alloy screws.

Screws and Barrels for extrusion, injection and blow moulding to specification to suit your process. Fast Track Services for refurbishment, site wear check surveys and technical support, with full in-house design facilities ..and much more.

To discover more about our products and service, please contact us:  
**Tel 01920 465201**  
**E.mail enquiries@magog.co.uk**  
**www.magog.co.uk**

**Magog Industries Ltd**  
**10, Crane Mead, Ware, Hertfordshire**  
**SG12 9PY**

*Process Experience Manufacturing Expertise Engineering Excellence*

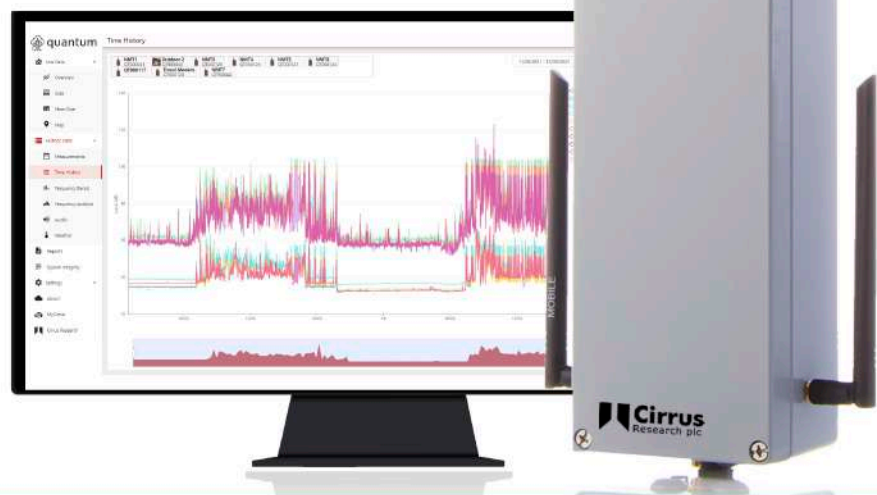
# Monitoring your environmental impact couldn't be easier!

With Quantum Outdoor from Cirrus Research.

Get instant access to your **noise, weather, air quality and ground vibration data** with Quantum Outdoor from Cirrus Research, our first fully integrated cloud-based comprehensive environmental monitoring system.

Quantum Outdoor can work in any environment, including providing long-term remote noise and environmental monitoring for the construction and demolition industry.

**Discover remote environmental monitoring:**  
[cirrusresearch.com/quantum-monitoring](https://cirrusresearch.com/quantum-monitoring)





# BUILDING UPDATE

ISSUE: 686 May | [www.solutionspublishing.co.uk](http://www.solutionspublishing.co.uk)



## STEEL BUILDING SOLUTIONS

+ SINGLE SKIN + COMPOSITE + ROLLER DOORS + WINDOWS +



INDUSTRIAL



AGRICULTURAL



DOMESTIC

+ SKYLIGHTS + PERSONNEL DOORS + INSTALLATION OPTIONS +

GET A FREE ON-LINE QUOTE AT  
**[WWW.CASTLESTEELBUILDINGS.CO.UK](http://WWW.CASTLESTEELBUILDINGS.CO.UK)**

OR CONTACT US ON

**01302 301402**

**[INFO@CASTLESTEELBUILDINGS.CO.UK](mailto:INFO@CASTLESTEELBUILDINGS.CO.UK)**



Avrame UK  
see them on.....II



W J Horrod  
see them on.....IV



Swifex  
see them on.....VI-VII



Playcraft Group  
see them on.....XII



Independent Access Sales  
see them on.....XIII



Kedell  
see them on.....XIV



Checkedsafe  
see them on.....XVIII

### Feeder Pillars

We manufacture and supply a huge range of Feeder Pillars to suit every purpose in galvanised or stainless steel and GRP, Shell only or pre-wired



For every type of power distribution, EV Charging, MRI for Hospitals, Sports & Leisure, Parks & Gardens, Events & Markets, Multi-Service & Multi-User



We keep a wide range of quality Feeder Pillars in stock. Bespoke and made to order delivered from 2-3 weeks!

### Belisha & Refuge Beacons

#### AmberGLO8

8W LED Beacon with amber globe and aluminium gallery with 3No. Reflective white bands. Reliable and long lasting



#### OlympiadIPB

30W total LED Beacon High Visibility with illuminated and reflective white banding



#### Lodestar

LED Refuge Beacon 12W with Pearl Globe and Traffic Grey Gallery



#### Sentinel26

Refuge upgrade 26W total High Visibility LED Beacon with 2No. Illuminated reflective white bands. Suitable for retro fit or new install.



Full range in stock - Complete Beacons and accessories - Courtesy Shields, LED Crossing Spotlights, Bracket Arms and retrofit spares such as Reflective White Bands etc.



Contact our Sales Team now on **0333 666 2122**  
or email **[info@fisherandcompany.co.uk](mailto:info@fisherandcompany.co.uk)**  
Visit **[www.fisherandcompany.co.uk](http://www.fisherandcompany.co.uk)** to view our range of products

1-4 Cary Court,  
Somerton Business  
Park, Somerton,  
Somerset TA11 6SB



[www.facebook.com/solutionsuknews](http://www.facebook.com/solutionsuknews) | @Publishing\_2016



# Creating perfect sleep and storage solutions

Wallbed Systems offer an exclusive range of beautiful wall bed hardware designs to furniture manufacturers and retailers, hardware distributors and retailers, hotel and hospitality contractors around the world. This sleeping solution works perfectly in hotel rooms, micro-apartments, small bedrooms, a home office and student accommodation, providing an excellent hybrid living, working, studying and sleeping area, fully maximising the space available.

Wallbed Systems Ltd. is a London-based global business established by Managing Director, Jeremy Waller, who has extensive experience selling mattresses and beds

across Asia, who saw opportunities for sensible designs of reliable, safe and flexible wall beds, which could feature comfortable mattresses. With the latest designs and accessories (such as with the Alpha bed and Studio desk pairing) small or odd shapes rooms are transformed into multi-use spaces with cleverly concealed sleeping areas.

**Contact Jeremy Waller,**  
**T +44 (0)208 704 5796**  
**T +44 (0)7780 661958**  
**jeremy.waller@wallbedsystems.co.uk**  
**www.wallbedsystems.co.uk**



## House Kits

# Avrame UK highlights Economic Perks of A-frame kit homes for income-generating getaways

A-frame homes are making a bold return, fuelled by rising construction costs and the growing demand for distinctive travel experiences. Once a staple of mid-century design, these striking triangular structures are regaining popularity as an affordable and eco-friendly housing option.

First gaining traction in the 1960s and 70s, A-frames were admired for their practicality. Their sharply pitched roofs make them resilient in varied climates, while their minimalist structure keeps expenses manageable. With today's surging property prices, they are emerging once again as a smart housing solution. Kit homes, such as those from Avrame, simplify the process further, providing pre-cut materials and clear assembly guides that allow individuals to construct their ideal space with minimal hassle.

As modern travellers seek accommodations that go beyond the ordinary, A-frame cabins have become prized getaways. Generic hotels are losing appeal, while secluded stays – tucked away in scenic landscapes – are thriving on Airbnb. These charming retreats, often booked far in advance, offer a perfect blend of coziness and exclusivity. In response to shifting preferences, Airbnb continues evolving, curating unique experiences that make properties even more appealing.

Leading the charge in the UK, Avrame is bringing A-frame kit homes to a wider audience.



Their energy-efficient designs provide practical solutions for those looking to build sustainable, cost-effective spaces. With flexible layouts and a simplified building process, Avrame UK enables

homeowners to create stunning residences, rental properties, or remote escapes – all without the burden of traditional construction costs. As affordability and sustainability take centre stage, A-frames offer a fresh, elegant answer to modern housing challenges.

**If you would like to book your own Avrame experience here are links to rent a lodge:**

**Reece in Calvert Kielder, Kielder Water & Forest Park, Hexham, Northumberland**

**Sara J in Calvert Kielder, Kielder Water & Forest Park**

**To register interest in Duo 57 near Brighton: <https://www.qleisure.co.uk/#a-frame>**

**To explore more or to build your own visit Avrame UK at: [www.avrame.co.uk](http://www.avrame.co.uk) and start turning that weekend getaway dream into a real-life (income-generating) plan.**

**T 01237 730870**  
**M 07772 377102**  
**mail@avrame.co.uk**




**A truly global house kit maker**

**LEARN MORE**



**Avrame.co.uk 01237730870**  
**mail@avrame.co.uk 07772377102**





next bed™

## LEADING FOLDAWAY BED SUPPLIERS



Wide Range



Highest Quality



Competitive Prices



next bed™

Wallbed Systems designs, develops, manufactures, and distributes a wide range of wall bed systems to 27 countries around the world.



Alpha Bed™ & STUDIO DESK



Alpha Bed™

**Wallbed Systems Ltd.**

[www.wallbedsystems.co.uk](http://www.wallbedsystems.co.uk)

[Jeremy.Waller@wallbedsystems.co.uk](mailto:Jeremy.Waller@wallbedsystems.co.uk)

+44 208 704 5796 | +44 7780 66 1958

## 75 years of W J Horrod Ltd

This year, W J Horrod Ltd, an award-winning, family-owned business, proudly celebrates 75 years!

Founded in 1950 by brothers William John and Alex Horrod, W J Horrod Ltd began as a repair service, leveraging their military engineering experience. It quickly evolved into a leading manufacturer of asphalt and bitumen equipment, as well as civil engineering and highway maintenance machinery.

Incorporated in 1961, the company was named after their father William John Horrod Snr, whose financial support made it possible. Over the years, it remained a family business, with younger brothers and later generations taking the helm. Today, second-generation directors Kim and Terry run the company, with third-generation apprenticeship to carry on the legacy.

For 75 years, W J Horrod Ltd has been at the forefront of manufacturing equipment for industrial solutions. Based in London, the company is widely recognised as the industry leader in safety and efficiency.

Horrods thrive on challenges: continually developing, designing, and testing new products to ensure customers have the very best machinery and plant for each project. Over the years, Horrods has worked across mainly the 'building' industry, but its expertise is not strictly limited to it. The company has provided all



manner of products for manual handling, with clients ranging from the Royal Opera House, to the QEII Conference centre and Billingsgate Market. Their product range is extensive, and includes everything from the SwiftMelt Mastic asphalt mixer to Hotboxes, Hot Air Rubber Materials melters, and thermoplastic pre heaters (whiteliners.)

Always at the forefront of safety, quality and efficiency, Horrods' range of services also include operator training, a hire service

for many of its products, consultation on heating/decanting of new materials, research & development for problem solving, health & safety, and the ability to collaborate with Health & Safety Executives.



Terry Horrod Snr truly championed health & safety and advised HSE on good practices until the early 2000's. Safety continues to be the watch word at Horrods today, as many of the larger products have moving parts using LPG Propane Gas or electric elements, and are heating vessels that produce hot materials.

Working alongside AYM, Horrods takes safeguarding very seriously, prioritising safety alongside quality. Every product is crafted using the highest-quality components and undergoes a rigorous design process, including longevity testing. Additionally, they ensure that products are easy to service and monitor once they leave the workshop.



For more information, please contact the team on the details below:  
T 020 8539 5746  
<https://www.wjhorrod.co.uk>

## Recruitment

## Goland Recruitment

Here at Goland Recruitment Ltd, we have extensive network and experience in placing exceptional candidates for the role you require. Whether it be in Construction, Retail, Hospitality or Commercial we are at your disposal to do the leg work for you.

Save time and money when recruiting for temporary or permanent/full-time position as we spend a considerable amount of time reading through the specifications and searching for exceptional candidates.

Please give us a call or drop us an email today if you require our assistance and we will do our best to get you the right person for the job at a rate that suits your budget.

Our full time placements fees are normally 12% to 15%



depending on the role and the salary, we now however have a set rate for all permanent roles placements of 8% no matter what the salary, but for your first two placements we are running a special offer of 5% across the board so don't miss out.

Please keep us in mind for all your Recruitment requirements, much appreciated.

Please see details below:  
T 01908 102078  
[info@goland.group](mailto:info@goland.group)  
[www.goland.group](http://www.goland.group)  
<https://www.facebook.com/2017goland>

**RECRUITMENT SPECIALISTS**

- RETAIL
- CONSTRUCTION
- WAREHOUSE
- OFFICE

**QUALITY DRIVEN RECRUITMENT**

NEW CLIENT OFFERS AVAILABLE - CALL NOW

T: 01908 102078

[info@goland.group](mailto:info@goland.group) [www.goland.group](http://www.goland.group)



# Bluerun Ltd achieves excellence in the workplace

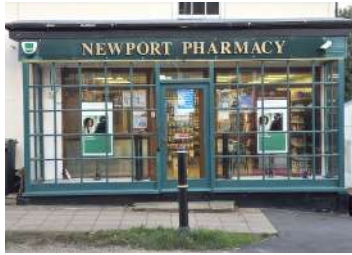
In this issue of Building Update, we are proud to announce that we have selected Bluerun Ltd as the recipient of our Custom-Made Joinery Excellence Award for 2025.

Upon reopening its doors in May 2020 after the COVID-19 pandemic, Bluerun Ltd has gone from strength to strength with its trusted brand now being known as one of the best in the joinery industry that has recently attracted big name brands turned clients, Starbucks and Waitrose.

Since 2022, the company has continued to strengthen in terms of revenue and new business. It has managed to maintain a strong conversion rate despite the current economic crisis and has found that enquiries for larger jobs as opposed to 'single window' types of jobs has been more popular especially from domestic clients.

Based in Wimbish, near Saffron Walden in Essex, Bluerun manufactures quality, bespoke joinery items for the commercial market from door and window packers to shopfronts, reception desks, mainframes, pub doors, and years ago, even made a trebuchet for Stansted Mountfitchet castle!

Of course, the company has the capabilities to manufacture most things from timber, hardwood, softwood, panels and sheet material. Some common items Bluerun Ltd manufacture for the domestic



building market include windows, doors (exterior and interior), bi-folding doors, staircases, bespoke storage units and wardrobes, all of which come with the option of being sprayed in primer or to a finish.

If you're looking for items made from both hard and softwood or even veneered and painted panels, Bluerun can reproduce

an array of items including replacement sashes, where it can manufacture a brand new one on a like for like basis, so the mouldings will match. Similarly, if a domestic client has found an image of a door that they would like reproduced, Bluerun can usually do that. Recently the company has started using a glass supplier that supplies them with stained glass effect units, complete with leading that has been aged and soldered.

Bluerun only produce purpose made joinery to client's drawings and specifications. Its unrivalled level of customer services means that free quotations are normally provided within 2-3 days or less, and the company can usually deliver a quick turnaround of any manufactured items required. And, because it has an experienced spray operative in charge of a modern spray paint and lacquer facility, articles can leave the factory in a fully finished state, ready for installation on-site.

What really sets Bluerun apart is that since its establishment it has never used computer aided machinery for any designs. Crafted to perfection, all

items are finished by hand, drawings are prepared with pencil and paper, and everything that is manufactured by the team has been done so with the utmost attention to detail. It also has the ability to obtain colour matches of any paint colours for clients that would prefer something sprayed to a finish.

Apart from needing the item to fit out its workshop doors upon completion, there is no limit to any project that Bluerun will endeavour to take on. Inspired by a challenge, Bluerun will do its utmost to cater to all enquiries.

**Contact**  
T 01799 599995  
dee@bluerunltd.co.uk  
www.bluerunltd.co.uk

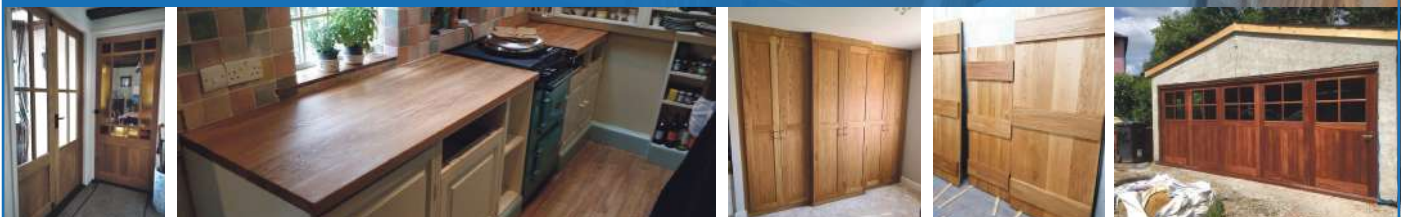


**Bluerun Limited**  
quality bespoke joinery since 1991

**QUALITY, CUSTOM  
MADE JOINERY**



Bluerun Ltd have been manufacturing top quality, purpose made joinery for the domestic and commercial markets for over 30 years.



Please visit our website: **www.bluerunltd.co.uk**

Tel: **01799 599995** | Email: **dee@bluerunltd.co.uk** f **bluerunltd** @ **bluerun\_joinery**



# INNOVATIVE PRODUCTS TO ENABLE FIXING THROUGH EXTERNAL WALL INSULATION

Our products are one of the most cost-effective solutions to enable the fitting of external furniture through external wall insulation and rain screen cladding, with the added benefit of being designed specifically for the job. Fully Pas2035 compliant for the future of retrofitting and the Modular housing sectors and the ideal solution for a longer term maintenance provision.

All fittings meet stringent technical requirements by preventing the compression of insulation and providing a watertight seal. They are also approved by many leading manufacturers and organisations developing modern methods of construction to support the requirement for new homes in the UK.



## **INNOVATIVE**

A new cost-effective way to fit external furniture through walls and cladding



## **ROBUST**

Super-strong to prevent insulation compression and provide a watertight seal



## **EASY TO INSTALL**

Simple yet effective next generation solutions. See for yourself



To find out more, please visit [www.swifix.co.uk](http://www.swifix.co.uk),  
call **01884 211540** or email [info@swifix.co.uk](mailto:info@swifix.co.uk)



# Sustainable Construction

In this issue of Building Update we have featured Support for Success for its Commitment to Excellence in the Building Industry.

Support for Success is a forward-thinking company when it comes to green skills training and consultancy. In a world facing serious environmental challenges, Support for Success offers initiatives that are necessary for a healthy future.

Offering courses developed in collaboration with industry experts and esteemed entities, this collaborative approach ensures the credibility and relevance of its offerings, whilst making them a leader in the field.

We spoke to Paul Brown MCGI MIOL, Managing Director, who explained to us what sets Support for Success apart from other training providers in the building and construction industry.

"Our training approach combines accredited certifications from the NOCN, CITB, and CPD with a strong emphasis on practical skills, not just theoretical understanding. By integrating these elements, we ensure that our courses are effective, up to date and contribute to the advancement of the sustainable building and retrofit industry."

We maximise the potential of experienced workers by assessing them and offering the courses as a route to the required qualifications – meaning those who take part know that they're fully up to date with the current specifications and have mastered the craft of the practical element. Our goal is also to empower the young and old to choose a career within green skills, we believe we can ignite the spark within the next generation for a more sustainable future.

We set ourselves apart by proudly designing these courses with a fabric-first approach."

Each course has been meticulously designed to meet critical skill gaps in today's UK construction and building sector. Specifically for the retrofit sector, these courses cover insulation measures which are new to the industry and an area that needs improved quality.

Its most popular course is Inspection Maintenance and Repair of External Wall Insulation. Paul explained this course in more detail:

"This course is a key player in our portfolio as it is a one-day course that can be offered on our premises or any of our partner premises across the UK, resulting in a Level 3 Certificate of Competence."



**SUPPORT  
for success**  
Green Skills Training And Consultancy



"Our primary goal with this course is to ensure that all participants are well-equipped to maintain the integrity of EWI installations, thereby safeguarding the validity of warranties and guarantees throughout their operational lifespan. Learners receive an assured Level 3 Certificate in Competence issued by the awarding body The NOCN post attendance, this not only enhances the learner's employability and career prospects but also ensures compliance with safety standards and positions them as a credible and adaptable professional in a competitive field."

Other courses include Floor Insulation, Understanding Domestic Retrofit, Internal Wall Insulation, Draught Proofing, and many more. To ignite the spark within the next generation of potential workers in building and construction, Support for Success is working closely with the Green Skills Advisory panel – GSAP, to try to engage young people to aspire for a career in the industry.

"GSAP is a dynamic and forward-thinking movement dedicated to shaping the future of sustainable construction across the United Kingdom. This is where our company was born as we knew we needed to create something that would completely innovate the green skills training sector. We know that the current industry has a shortage of skilled labourers, and this poses a challenge - by working closely with Exeter College and other educational sites, we advocate and aim to inspire young people to join the world of green skills to show that green construction and sustainable living is paramount to ensure a healthy future," added Paul.

In an industry that is already saturated with training courses, we asked Paul how can experienced workers benefit from their courses.

"Experienced workers can benefit from our courses as they will be

able to fine tune their practical skills to ensure the highest quality is upheld and they are able to refresh their knowledge during theoretical elements – ensuring they are up to date with the latest information and news within the appropriate sector."

Support for Success demonstrates its commitment to excellence in multiple ways—most notably by ensuring all lecturers are highly qualified and possess substantial industry experience. This guarantees that participants receive instruction that is not only relevant and practical but also delivered with expertise and confidence.

"Our classrooms will always harness and provide a friendly, collaborative, and motivating environment where learners can develop the green skills essential for sustainable building practices and effective retrofit solutions."

"Another way we achieve commitment to excellence is by welcoming fresh ideas and insights into how we can improve – we understand the industry is ever evolving so we welcome all participant feedback with open arms. We also stand open to suggestions and stay up to date with information to guarantee that we match up with the latest industry specifications," added Paul.

Support for Success continues to raise the bar for green skills training, standing as a shining example of how innovation, collaboration, and commitment to sustainability can transform the future of construction. Its forward-thinking approach, industry-aligned courses, and dedication to empowering both new and experienced professionals, means that organisations like Support for Success are not only meeting the moment – they are leading the way.

**Contact**  
T 01884 211542  
info@supportforsuccess.org  
www.supportforsuccess.org

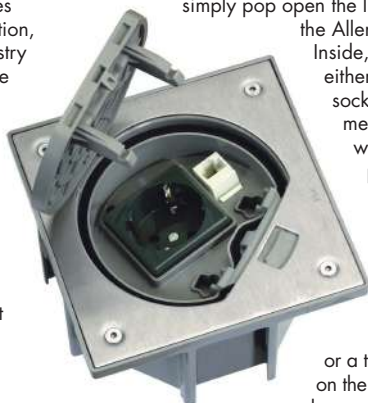


# SIMONBOX: Revolutionising electrical installations with elegance and efficiency

The SIMONBOX IP66 exemplifies outstanding quality and innovation, setting a new standard in the industry by addressing the design challenge of making a waterproof floor outlet which is easy to access and easy to use.

Designed for use in hard floor areas which require occasional power, data connection, and an IP protection rating, the SIMONBOX IP66 plays a significant role in the advancement of electrical solutions.

For example, its ease of use is remarkable. There are no lids to unscrew or extra parts to assemble. Users



simply pop open the lid using the standard slide or the Allen key security mechanism. Inside, the outlet can be fitted with either a UK 13amp or 5amp socket. When in use, the outlet meets the IP20 standard, and when closed, it achieves IP66 protection.

The SIMONBOX is available in two finishes: brushed stainless steel and brass. Users have the option of selecting waterproof sockets, with choices for a flush floor or a trimmed box finish. Depending on the floor type, there are two back box options: one for screed floors and another for raised or suspended floors.



display areas, and over the years, the SIMONBOX has gained popularity in a diverse range of commercial applications, including airports, car showrooms, shop fit-outs, and concourse areas.

What's more, one of the first UK retail chains to specify the SIMONBOX was NEXT HOME over a decade ago and today, it remains an integral part of NEXT's commercial fit-out specifications. Additionally, the SIMONBOX has seen growing popularity in both private domestic projects and larger commercial applications.

**CE and UKCA certified, find SIMONBOX available via your local electrical wholesaler or online at: [www.gromtec.co.uk](http://www.gromtec.co.uk)**

**Get in touch for more information: [info@gromtec.com](mailto:info@gromtec.com)**



When installed in a concrete floor, the SIMONBOX is designed to sit flush with the surrounding surface. For raised floor installations, commonly used in decking projects, the SIMONBOX sits slightly elevated to prevent water pooling around it. Internally, the back box features a self-drain opening for added protection.

Correctly positioned floor boxes ensure that power sockets are located exactly where needed, eliminating unsightly and hazardous trailing cables. The SIMONBOX is frequently used in projects requiring occasional floor outlets, such as pop-up

**Gromtec**  
europe Ltd.

**simon**

## SIMPLY SIMONBOX: IP66 watertight floor box

In 2012, Gromtec introduced the IP66 SIMON floor box to the UK market. The 'SIMON-BOX' proved a game changer, providing a cost-effective and practical waterproof floor box solution. Primarily designed as an 'occasional' floor box, the outlet sits flush in a tiled floor area. When closed the SIMONBOX is watertight, allowing tiled areas to be wet washed when required. The outlet also features an internal drainage system. This pioneering product has been consistently specified by consulting engineers and architects for a wide range of commercial and domestic projects. End users include John Lewis, NEXT Home Store, and Heathrow and Gatwick Airports.

The next generation of the SIMON-BOX is now available. Made with a matt black or stain-less steel finish, the outlet is offered as a single or twin outlet with a data or USB charging option. For a sneak preview go to: [www.gromtec.co.uk](http://www.gromtec.co.uk)

The new revised SIMONBOX site will be coming soon. For more information email: [info@gromtec.com](mailto:info@gromtec.com) or call: 02032 867949





# Frequent waste extraction blockages requires system analysis

A large packaging manufacturer in Northern England endured a waste extraction system plagued by daily blockages due to 30 years of incremental changes without a major waste system review. Paramount initially addressed the issue with a small project, installing a new in-line Paramount Shoe diverter. Unlike traditional diverters, this unique design operates while waste flows and prevents blockages by avoiding trapped waste on the diverting blade.

Impressed by Paramount's performance, the customer entrusted us with a major upgrade to eliminate recurring blockages, expanding the system for new machines, and carrying out substantial service work and modifications. Paramount conducted a detailed survey, modelled the waste system using our bespoke software, and planned improvements with minimal production disruption.



System upgrades included replacing and extending ducting, adjusting diameters to optimise waste flow velocities, and installing Paramount Shoe diverters throughout. This allowed for waste segregation, enhancing returns on waste and assisting customer's sustainability targets.

Post-upgrade, the customer experiences less than one blockage per month, allowing for an investigative procedure with most now being attributed to operator error rather than system design. This work, carried out for a multi-site, multi-country producer, has not only resolved long-standing issues but also strengthened Paramount's relationship within the customer's Group through the installation of proven, tested solutions and Engineering expertise.

T +44 (0)127 669 1463  
<https://paramountwaste.co.uk>



## WASTE EXTRACTION SYSTEMS FOR ALL TYPES OF DRY WASTE, DUST AND FUMES



With 25 years experience, Paramount Waste Extraction Ltd. specialises in designing, installing, and upgrading waste extraction systems tailored for a wide range of industrial, process and manufacturing sectors, including carton manufacturing, printing, packaging, foil and film production.

With a focus on efficiency and sustainability, Paramount Waste offers custom solutions to optimise waste handling, reduce production downtime, and enhance operational productivity with automated systems. Our services range from complete turnkey installations to system assessment, modifications and upgrades.

A complete range of proven designs including Chopper Fans, Separators and Filtration equipment combine with many years experience to create efficient and effective designs that work.

Paramount Waste collaborates closely with clients to ensure each project is completed within budget while delivering lasting improvements. Known for our expertise and commitment to quality, we provide dependable solutions to meet all types of modern industrial waste handling challenges.

Contact us on;

+44(0)127 669 1463

[enquiries@paramountwaste.co.uk](mailto:enquiries@paramountwaste.co.uk)

[WWW.PARAMOUNTWASTE.CO.UK](http://WWW.PARAMOUNTWASTE.CO.UK)





# Elite event crewing services

Olympus Crew offers a comprehensive range of event crewing services, distinguished by its highly trained and versatile team. With expertise spanning from tools and staging to AV and lighting, the crew is prepared to handle a range of diverse tasks efficiently.

Founded in 2018, Olympus Crew has rapidly established itself as a versatile and reliable partner in the event industry. Over the past six years, they have successfully managed a wide array of events, including festivals, corporate gatherings, live shows, and sporting events. With seasoned

crew chiefs at the helm, Olympus Crew ensures smooth operations, effective client communication, and proficient management of large on-site teams. Its dedication to excellence makes them a standout choice for event execution.

Olympus Crew have the ability to travel all over the UK and even overseas when required. The team is made up of diverse skillsets including carpentry, audio visual, physical and mental strength, as well as forklift and IPAF operators.

The crew will be with you from the start to the end of each project. Whether that be picking items from a warehouse, building and painting sets in a workshop or loading



and unloading trucks, Olympus Crew offer as much off-site as they do on.

If you're looking for an elite crew that is professional in its execution with a hardworking attitude, get in touch today and a member of the team will be in touch within 48 hours.

**M 07904 903452**  
**info@olympuscrew.co.uk**  
**www.olympuscrew.co.uk**



## Event Crew in Leeds & in London, UK

**We are a crewing company, for the clients, and for the crew.**  
**We ensure the best services for you**

Olympus Crew set up in early 2018 has developed into offering event solutions with crew, technicians and carpenters nationwide. Staffing jobs and events predominantly in the north of the UK, Olympus Crew has now spread across the UK and the globe working on some of the worlds most prestigious events.

### Event team Leeds and London

Whether it's a big or small event, International or Local, Olympus Crew have you covered. With crew operational in Leeds and London, with the ability to travel far and wide, we are a convenient and proficient option for you to use for your crewing needs. As well as the UK, we've sent crew to Europe, Asia, Australia, North and South America, so wherever we're needed we'll be there for you.

Here at Olympus Crew, we have a dedicated team of hardworking professionals who form the Olympus Crew family. To date, we have over 80 crew members which increases daily.

Please visit **www.olympuscrew.co.uk**  
Contact **079 049 03452** or email **info@olympuscrew.co.uk**





# Le Tonkinois Varnish & Flexidisc Sander: Trusted tools for lasting finishes

**B** & D Murkin is the main UK importer for Le Tonkinois Varnish and the Flexidisc sander. Established in 1992 by three brothers Derek, Brian and Roy Murkin, the company is based in Maidenhead and imports a range of products that are used by professionals and amateurs to produce fantastic finishes. Its main products have been demonstrated and sold at numerous shows throughout the UK for over 30 years and have proven reliable and resilient over this time.

Le Tonkinois Varnish is an environmentally friendly natural oil-based yacht varnish, that uses a Chinese formula dating back two or three centuries. Designed to remove brush-marks, bring out the natural beauty of the timber without cracking or flaking off, this permanent varnish is simple to use and only requires an additional coat every few years. Proven as the perfect solution for the amateur user seeking a professional product, Le Tonkinois Varnish comes available in three separate forms.



Le Tonkinois Classic is a high-quality finish known for its exceptional penetration, even on oily timbers, creating a strong and lasting bond without leaving brush marks. It forms a tough, non-porous, and weatherproof coating that is highly resistant to UV rays, sea water, and other harsh elements. Free from harmful or irritating ingredients, it is ideal for indoor use but also surpasses many competitors in outdoor applications. Ecologically friendly and free of petroleum solvents, it can be applied over most existing finishes (excluding wax), and enhances the natural beauty and colour of bare wood. Especially suited for boats and garden furniture, it remains flexible and will not crack, chip, or peel. Its natural, brilliant gloss can also be adjusted to a matte finish if desired.

Le Tonkinois Marine No. 1 is a further refined version of the Classic, offering enhanced purity and superior performance. It dries faster, penetrates wood more effectively, and is easy to apply. With improved UV protection and greater resistance to abrasion, it provides a more durable and long-lasting finish. Marine No. 1 also delivers a higher gloss compared to the Classic and is less prone to skinning in the can, making it an excellent choice for demanding marine and outdoor applications.

Le Tonkinois Parquet is ideal for flooring and employs a strong synthetic Alkyd resin and Ester oil to return a harder-wearing surface for foot traffic. The finish is a little less glossy than the other two, just slightly opaque. Furthermore, all three can be matted or semi-matted by including Gelomat in the final coat.

Le Tonkinois is also brilliant for use on boats in fresh water sea or sludge. Le Tonkinois is brilliant for all materials. Because it stays flexible, it moves with the

timber, so it is even suitable for use on Oak or Cork without cracking. Other areas of use include outdoor and interior woodwork as well as kitchens because it is fully waterproof, cannot be marked by hot cups or plates, isn't affected by water or alcohol, and is classified safe to use in food areas.

Another notable product is the Flexidisc Sander/Grinder that gives a superb finish on wood, metal, fibreglass, car body fillers and all other hard materials. The Flexidisc Basic pack includes a Flexidisc sander, steel locking nut, abrasive discs, and cleaning rubber. In its basic state it's a general sander, however its capabilities are varied meaning it converts in seconds to be used as a super-fine finishing sander, a bench grinder, a general-purpose sharpener, a partial angle grinder, a polish applicator/polisher, as well as a grinder for glass and nails.

The Flexidisc Sander/Grinder is a 5" (125mm) disc sander attachment that fits into any drill. Its flexible, vibration-free shaft provides full control without skidding or scuffing, ensuring smooth results with minimal effort. It uses reusable, velcro-backed discs coated with ultra-hard Corundum – each lasting as long as 100 standard discs. These discs handle everything from soft plaster to steel, and can polish rough timber faster than conventional sanders, all while generating minimal heat, making it safe for materials like GRP and old paint.

**If you're would like to learn more about these products, or any further services, please see below:**  
**T 01628 548840/01628 629892**  
**bmurkin@sky.com**  
**www.letonkinoisvarnish.uk**

## LE TONKINOIS VARNISH

LE TONKINOIS VARNISH IS A NATURAL OIL BASED YACHT VARNISH, USING A CHINESE FORMULA DATING BACK TWO OR THREE CENTURIES AND WHAT A FORMULA!

IT REMOVES YOUR BRUSH-MARKS, BRINGS OUT THE NATURAL BEAUTY OF THE TIMBER, DOESN'T CRACK OR FLAKE OFF, AND IS PERMANENT, SIMPLY ADD A FURTHER COAT EVERY FEW YEARS.

LE TONKINOIS CLASSIC IS THE ORIGINAL CHINESE RECIPE, WHICH HAS PROVED TO BE A FIRST CLASS RESILIENT AND RELIABLE VARNISH FOR MORE THAN A CENTURY. TRADITIONALLY USED BY THE FRENCH NAVY FOR ALL THEIR SAILING VESSELS, AND WIDELY USED BY TRADITIONAL CRAFTSMEN FOR YEARS. IT TENDS TO GIVE A THICKER COAT THAN MARINE NO 1.

Please visit **www.letonkinoisvarnish.co.uk**  
 Telephone **01628 629892** or email **mail@letonkinoisvarnish.uk**





# One-stop-shop for indoor and outdoor sports and leisure spaces

The UK has seen an explosion in indoor recreational spaces, from trampoline parks, Ninja Warrior courses to soft play centres.

The first indoor Trampoline Parks opened in 2014 and over the last ten years, over 150 parks have opened. From corporate days out, to children's parties and clubs, trampoline parks are a growing industry.

Ninja Warrior Courses have likewise sprung up in major cities across the country, all inspired by the ITV hit programme Ninja Warrior UK. From Leicester to Liverpool, children and teenagers of all ages put their Ninja skills to the test in a series of physical obstacle courses.

Soft Play Centres hardly need an introduction, as most aunties, grandparents, and parents will have taken their child or younger relative to one at some point. Come rain or shine, all year round, soft play centres provide hours of safe, sociable fun for babies,

toddlers and children. Designed for children to let off steam, the integrated slides, ball pits and play areas are perfect for weekly meet ups and children's parties.

For companies looking to increase franchises and open new centres, it's always good to use manufacturers renowned for professionalism, expertise and excellent customer service. The Playcraft Group fits the bill with 40 years' children's play industry and 25 years' play centre attraction industry experience. Based in South Wales, the company offers a one-stop-shop for design, manufacturing, installing and maintaining trampoline parks, climbing walls, Ninja Warrior courses, adventure playgrounds and much more.

"We offer bespoke installations across the indoor and outdoor sports and leisure sector, as one of the few one-stop-shops in the industry. Our previous high-profile clients have included Disney, Land Rover and Cartoon Network and we work with farm parks, theme and holiday parks, schools, the FEC sector and more. We know the business inside out and we're happy to offer free 360° advice from business plans and models, to planning application support, insurance to franchising advice. From Jungle or Space themed soft play, climbing wall in a new upcoming urban space, to an exciting Ninja Warrior Course, we can do it all.

Currently we are working on a wheelchair-friendly, soft play section for a local soft play centre. We are adapting our soft play materials to incorporate the width of an electric or manual wheelchair. The end result will be an inclusive space for children in



wheelchairs. More and more soft play centres are adding sensory spaces (lights, textures etc) to support neurodiverse children, to increase inclusivity for children and their families," explains Mike Broadfield: founder, coach and consultant.

**To start your indoor leisure franchise journey today, contact Mike on the details below:**  
**T +44 (0)1792 422818**  
**hello@playcraftgroup.com**  
**<https://softplay-manufacturer.com>**



## CHOOSE US FOR 'DIRECT' SUPPLIES

### Multiple Facilities

- Trampoline Parks
- Soft Play Areas
- Climbing Walls
- Ninja Warrior Courses
- Adventure Playgrounds

### All In-House

One of the only companies who:

Design  
Manufacture  
Install  
Finance

### FREE 360° ADVICE

We help ensure your success with:

Business Plan & Model  
Planning Application  
Success  
Financials & Insurances  
Franchising

Find out more at [softplay-manufacturer.com](https://softplay-manufacturer.com)

Tel +44 (0)1792 422818 | [hello@playcraftgroup.com](mailto:hello@playcraftgroup.com)





# IAS: Success at APF 2024 and exclusive new Socage product

Independent Access Sales (IAS) sell market-leading manufactured platforms, such as Easylift Spider Platforms, SOCACHE Truck Mounting Platforms.

Based in Huntingdon, IAS has gone from a relative newcomer on the market to selling million-marked machines over the last two years. One of the main reasons for the company's success is the focus on solid customer service. Founder Richard Martin has 35 years' previous sector experience across scaffolding, supervisory roles and surveying and understands the industry inside out.

With a focus on brand awareness, IAS brought its Easylift Spider Platforms and SOCACHE truck-mounted platforms to the APF Show from the 19th-21st September at Ragley Estate, Warwickshire. APF has been running since 1976 and is a respected dedicated biannual event for the whole forestry, woodland, arboriculture, firewood,



fencing, tree and timber sectors. It's the largest of its kind and attracted 23,000 visitors this year.

"APF 2024 was a huge success for us. We met lots of knowledgeable end-users, with a huge appetite for the latest machinery. As a biannual event, it had an extra buzz, with lots of strategic talk. We had lots of hot enquiries and sold a SOCACHE 24D double-articulated truck platform during the three-day event. This product has been precision-designed with safety in mind, with automatic stabilisation as standard. It can reach a working height of 23.60M and a lateral reach of 12.70M with a maximum load of 300kg: perfect for all tree surgery jobs. The SOCACHE 24D is set up to approach heights without risk of collision and with improved precision, which is ideal for manoeuvres like tree pruning," added Richard.

The Easylift Spider Platforms are also ideal for tree surgeons: with the range available from 13M up to 53M. The Easylift platforms give the owner

operator assurance and flexibility in business: simply put – more control over what to do in different environments. For tree surgeons, this allows operators the advantage of closing the Easylift Spider Platform down to less than 1M working width to take down a narrow footpath in a forest, to setting up on a hill to work at great height.

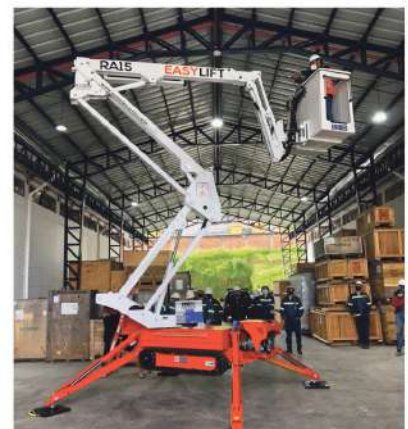
"We are delighted to report that from early next year, we will be supplying the SOCACHE 75M – which will be the largest SOCACHE access platform in the UK: a market-first. Contact us now for further information!"

**For more information or to speak to Richard Martin directly, please see the details below:**  
**M 07483 246878**  
**enquiries@iasales.co.uk**  
**www.iasales.co.uk**



SUPPLY AND SERVICE SPIDER PLATFORMS AND TRUCK MOUNTED PLATFORMS AND WILL HAVE THE PERFECT ACCESS SOLUTION FOR YOUR BUSINESS.

**FIND YOUR PERFECT PLATFORM**



**INDEPENDENT ACCESS SALES**

**GET IN TOUCH TODAY OR VISIT OUR WEBSITE TO VIEW OUR RANGE.**  
**T. 07483 246878 | E. ENQUIRIES@IASALES.CO.UK | W. WWW.IASALES.CO.UK**





# Recycled plastic educational furniture maintenance-free outdoor classroom products

Using Recycled Plastic Wood and Recycled Mixed Plastic Lumber collected from UK Homes and Businesses – Eco friendly and Sustainable

**Recycled plastic lumber** or recycled plastic wood, is made from taking your waste plastic and processing it for reuse. 66% less energy is needed than is required in production of virgin plastic, and it releases a whopping 250% less carbon dioxide.

We turn this recycled plastic into aesthetically pleasing, useful products, for the general public, construction companies, local authorities, educational institutions and hospitals all over the world.

All our products are recycled as well as being recyclable.

This is the ideal of recycling. It's a closed loop.

All the plastic products we use as consumers should be capable of recycling indefinitely making for a sustainable future for our children and a cleaner less toxic environment.

In some cases we also reuse rather than recycle.

For example, we have a **Recycled Plastic Compost Tumbler/Compost Bin** – appropriately named, **'The Compost Creator.'** For this we reuse a food grade plastic drum previously used to transport food products.

**Reuse is vastly superior to simply recycling**

There is no significant consumption of energy, as there is no manufacturing process involving heavy use of



energy. We just drill a few holes in the drum and clean it up as best we can.

Both recycling plastic as well as reusing it keeps large amounts of plastic waste out of expensive and now difficult to find landfill.

This results in a lower carbon footprint and reduced human contribution to global warming and climate change.

Recycled Mixed Plastic Lumber, recycled HDPE and recycled polystyrene (which is the primary waste plastic in our recycled plastic wood or recycled plastic timber) are what we make all our products out of.

These, often brightly coloured, Recycled plastic products are extremely durable and attractive.

They will maintain their appearance for many years to come.

Our highly acclaimed **Compost Tumbler, or**

**Compost Bin, Raised Beds, Garden Planters, 2 and 3 Seater Garden Benches, Sports Benches, Play Dens, and other Outdoor Classroom products** are not flimsy and light, but robust and solid enough not to blow away in a gale.

If you would like to pay us a visit you will be very welcome.

Our manufacturing unit is in Burnley, Lancashire. We deliver nationwide, but you may be nearby and can pop in to see us. Best to call 01282 861325 first though.

We're close enough for a visit

if you are in Nelson, Foulridge, Lane Bottom, Colne, Bradford, Clitheroe, Accrington, Blackburn, Keighley, Newchurch, Preston, Rochdale, Huddersfield, Shipley, Dewsbury, Castleford, Harrogate, Wakefield, Darwen, Leyland, Halifax, Bacup, Hebden Bridge, Barnoldswick, and West Yorkshire. Manchester or Bolton are a stone's throw away. Come and see our showroom and view these elegant recycled plastic products close up.

Our plastic wood will amaze you. This recycled plastic looks and feels like genuine wood but is superior in design and quality to traditional wood lumber or timber products.

**See Eco-Table and Bench Outdoor Furniture Set:** <https://www.youtube.com/watch?v=aAdixalBHYS>

**Please visit:** [www.kedeleducation.co.uk](http://www.kedeleducation.co.uk)

## The Zero Maintenance Alternative to Wood



### Recycled Plastic

- 100% recycled and recyclable
- Impervious to fungi, algae, insects
- Never rots, splinters or cracks
- Graffiti resistant
- UV Protected
- Eco-friendly and low carbon
- 100% maintenance free
- Lasts a lifetime



**Please contact us on 01282 861325**  
**sales@kedel.co.uk | [www.kedel.co.uk](http://www.kedel.co.uk)**





# Building better energy efficiency into high performance facades

**Mark Halliday, Head of Technical at ARBO®, part of CARLISLE® Construction Materials, discusses a fabric first approach to façade specification as part of improved building performance**

**B**uildings account for 40% of global carbon emissions; a figure set to double by 2050. A performance-led approach to design and building fabric specification are part of the solution.

### Fire safety and performance

Changes to the Building Safety Act (BSA) now require whole project teams to prioritise functionality, buildability, and sustainability.

CARLISLE® prioritised those principles when developing the ARBOSHIELD Pro® Fire-Resistant Façade System – a group of products with Class A or B reaction to fire, and W1 resistance to water penetration.

Correctly specifying and installing products is essential to ensure performance. That's why the ARBOSHIELD Pro® range has been developed for ease of installation and buildability, with technical and on site support for specifiers and installers.

### Performance in detail

Poor performance or installation at structural openings can compromise the airtightness, watertightness and fire safety of the whole façade. Rigorously-tested and compliant systems, that combine performance with ease of installation, are essential.

The ARBOSHIELD Pro® External Perimeter Class A Membrane (EPAM) ensures a neat, fire safe, compliant, and trusted installation on all structural openings.



Creating a watertight and airtight seal with certified fire resistance, the ARBOSHIELD Pro® EPAM connects a concrete structural frame or steel frame to SFS sections and exceeds the current Building Regulation and Approved Document B requirements for a fire and weathertight seal that bonds even in -40°C temperatures, futureproofing the project.



ARBO offers a range of sealing solutions, including pasted EPDM, butyl-backed Easy-Stick, Class B FR-RS fire tape, and EPAM. These options cater to diverse EPDM and façade opening sealing and interface requirements based on project criteria.

### Sealing for success

Sealants are the unsung hero of façade specification, protecting a building's structure and aesthetics by preventing water damage and thermal bridging.

ARBO's sealants, in various colours, are ideal for applications including perimeter pointing, cladding panels and glass-to-glass joints. Where fire safety is essential, the ARBO range of intumescent and fire-resistant mastics and sealants can deliver safety, waterproofing and airtightness performance for expansion joints, glazing, windows and doors, and brick and blockwork.

### The benefits of simplification

Selecting products designed to work together, developed for ease of installation, and proven to deliver performance can make a substantial difference to the safety, thermal efficiency, and longevity of the façade.

**Please visit:**  
[www.arbo.co.uk](http://www.arbo.co.uk)

**CARLISLE**  
CM EUROPE

## Accountability

The Building Safety Act has been updated.  
Do you know your new responsibilities?

### ARBOSHIELD® PRO

## Class A Fire-Resistant Façade System

Revisions to the Building Safety Act mean we are now all more accountable when specifying fire safe products within buildings. Fire management can be complex, so we've removed all uncertainty by introducing new products that meet and exceed the standards. By providing you access to our industry experts, and technical professionals, ARBO is your assurance of protection and peace of mind.

**For sales and distribution enquiries please call: +44 1773 826 661**

**YOUR ACCOUNTABILITY BEGINS WITH ARBO**

[www.arbo.co.uk](http://www.arbo.co.uk)



Free samples

**ARBO®**

## Hinges




**GOLD & WASSALL**  
EST. 1790

Gold & Wassall have been manufacturing hinges for over two centuries, so it's safe to say we know what we're doing.

Our team of experts can design and manufacture almost any hinge, for any application.

**T 01827 63391**  
[sales@goldwassallhinges.co.uk](mailto:sales@goldwassallhinges.co.uk)  
[www.goldwassallhinges.co.uk](http://www.goldwassallhinges.co.uk)

## Project Management Software




**elevate™**  
*Construction Made Easy*

Elevate software can provide real-time updates, directing everyone on actions and this results in the team, prioritising their time and becoming more productive.

[www.elevate-software.co.uk](http://www.elevate-software.co.uk)

## Interior & Exterior Furniture




**BESPOKE CRETE**

BespokeCrete creates custom and bespoke furniture, outdoor kitchens, kitchen worktops, waterfall islands, patio sets, indoor table & bench sets, coffee tables, baths, sinks and so much more – that is fully waterproof, heat, stain and scratch resistant.

**T 0800 061 4157**  
[info@bespokecrete.com](mailto:info@bespokecrete.com)  
[www.bespokecrete.com](http://www.bespokecrete.com)

## Deep Hole Drilling




**UNISIG**  
DEEP HOLE DRILLING SYSTEMS

Our industry-leading customers around the world rely on UNISIG® deep hole drilling technologies for powerful, productive solutions and value. We engineer our machines to handle a complete range of applications, and support them with our high level of expertise and service.

[www.unisig.com](http://www.unisig.com)

## Safety Consultancy




**DCON**  
SAFETY CONSULTANTS

DCON Safety Consultants is committed to understanding the specific needs, goals, and desires of each individual client and project.

**T +353 (0)1 611 1556**  
[info@dconsafety.com](mailto:info@dconsafety.com)  
[dconsafety.com](http://dconsafety.com)

## Sign Plaques & Architectural Castings




**LEANDER**  
ARCHITECTURAL

Manufacturers and designers of high quality fingerpost signs, bandstands, bespoke canopies, Porte-cochère, blue plaques, noticeboards, cast signage, memorial plaques, street furniture, gazebos and much more.

**T 01298 814941**  
[www.leanderuk.com](http://www.leanderuk.com)

## Portable Buildings




**ModConCabins**  
Manufacturer of Modular, Containers & Cabins

ModCon Cabins provides modern, affordable and bespoke modular and portable buildings for a multitude of situations, each one carefully crafted from new and used shipping containers.

**T 0333 404 8822**  
[modconcabins.co.uk](http://modconcabins.co.uk)

## Eco-Friendly Plastic Products




**KEDEL**  
ECO-FRIENDLY PLASTIC PRODUCTS  
TRADE

Kedel Limited is a family business, founded on ethical and ecologically sound principles.

We created our business to showcase the very best recycled plastic products, putting green, sustainable living at the heart of all our company decisions.

**T 01282 861325**  
[www.kedel.co.uk](http://www.kedel.co.uk)



## Compliance Solutions



CheckedSafe was developed to provide simple and inexpensive compliance solutions that could be tailored to any industry.

**T 01282 908429**  
**info@checkedsafe.com**  
**www.checkedsafe.com**

## Timber



The Company was founded in 1883 by Louis Vandecasteele. In those days, wagon making was the main commercial activity. Desiré Vandecasteele, son of the founder, then added a small sawmill.

**Contact**  
**T +32 56 43 33 00**  
**vandecasteele.be/en**

## Machinery



With 35 years of experience in the access industry, we will find the platform most suited for your needs and supply at the best price achievable.

Independent Access Sales offer a complete service management facility throughout the UK.

**T 07483 246878**  
**enquiries@iasales.co.uk**  
**iasales.co.uk**



## Landscaping Machinery



Eco Clipper offers large electric-powered mowers that help field managers minimise mowing costs for sports fields. Users report high productivity gains and appreciate low maintenance requirements, quiet operation and the ability to schedule mowing even under less favourable mowing conditions, such as early morning dew and wet autumn.

**T +31 (0)6 46 75 35 60**  
**www.ecoclipper.com**



## Engineering & Consultancy



Bartels & Vedder is an engineering firm, specialised in floating and flood proof buildings and structures.

**T +31 (0)6 422 398 53**  
**www.bartelsvedder.nl**

## Waterproofing



TuffStuff® is the UK's premium designer, manufacturer and supplier of heavy-duty GRP waterproof flat roofing systems.

**T 01977 680250**  
**orders@tuffwaterproofing.co.uk**  
**www.tuffstuff.co.uk**

## Fixings



Our Award Winning Solutions are one of the most cost-effective solutions to enable the fitting of external furniture through external wall insulation and rain screen cladding, with the added benefit of being designed specifically for the job.

**T 01884 211540**  
**info@swifix.co.uk**  
**www.swifix.co.uk**



## Storage



Wallbed Systems offers a large range of wallbed hardware designs. We produce many different styles of wallbeds and ship all over the world.

**Contact Jeremy Waller,**  
**T +44 (0)208 704 5796**  
**jeremy.waller@**  
**wallbedsystems.co.uk**  
**www.wallbedsystems.co.uk**



# Simple and inexpensive compliance solutions tailored to any industry.

CheckedSafe provide compliance services across commercial & plant hire businesses, utilities companies, and many other service sectors that are monitored for compliance.

## Vehicle Compliance

The vehicle compliance system for all fleets with paperless defect reporting and office portal.

- ✓ Driver's app
- ✓ GPS tags
- ✓ Back-office portal
- ✓ DVSA compliant

## Licence Checks Service

Conduct licence checks remotely ensuring your drivers have the correct credentials.

- ✓ Simple to use
- ✓ Pay as you go
- ✓ Remote use
- ✓ OCR technology

## GB Domestic Hours

Demonstrate your GB domestic hours compliance whenever needed.

- ✓ Ensure legal compliance
- ✓ Manager driver fatigue
- ✓ Improve productivity
- ✓ Real-time alerts

## Lone Worker

The smart way to protect lone workers with visibility of all your team members in the hub.

- ✓ SOS red alerts
- ✓ Welfare checks
- ✓ Worker down alerts
- ✓ Group notifications

## Dynamic Risk Assessment

Identify hazards, assess risk, take action, and review reports, on-site, and in real-time.

- ✓ Simple to use
- ✓ Pay-as-you-go
- ✓ Remote use enables
- ✓ OCR technology

Try free for 30 days  
Visit [checkedsafe.com](https://checkedsafe.com)



**CheckedSafe**



# Linear Motion Specialists

MOTION & CONTROL™

**NSK**

Authorised NSK & Nippon Bearing Distributor



## RM Fowler Ltd

- High precision linear guides and ball screws
- NSK K1 lubricating units to extend maintenance intervals
- NH series available with high temperature design
- RA roller guides for high load, rigidity and precision
- PU/PE Miniature series with high corrosion resistance
- Precision cross roller non-recirculating slide ways
- Slide bush, Topball, Stroke bush and Ball splines
- Precision curved cross roller Gonio Ways

01565 651 051

[sales@rmfowler.co.uk](mailto:sales@rmfowler.co.uk)

[www.rmfowler.co.uk](http://www.rmfowler.co.uk)



## Prefabricated Portable Building Blocks



### FACILITIES TO COMPLIMENT YOUR BUSINESS

UK's #1 SUPPLIER OF PREMIUM PORTABLE TOILET & SHOWER BLOCKS



TOILET & SHOWER



ACCESSIBLE  
TOILET & SHOWER



TOILET ONLY



GET IN TOUCH TODAY!

01543 524 553

[info@arkemleisure.com](mailto:info@arkemleisure.com)

[www.arkemleisure.com](http://www.arkemleisure.com)

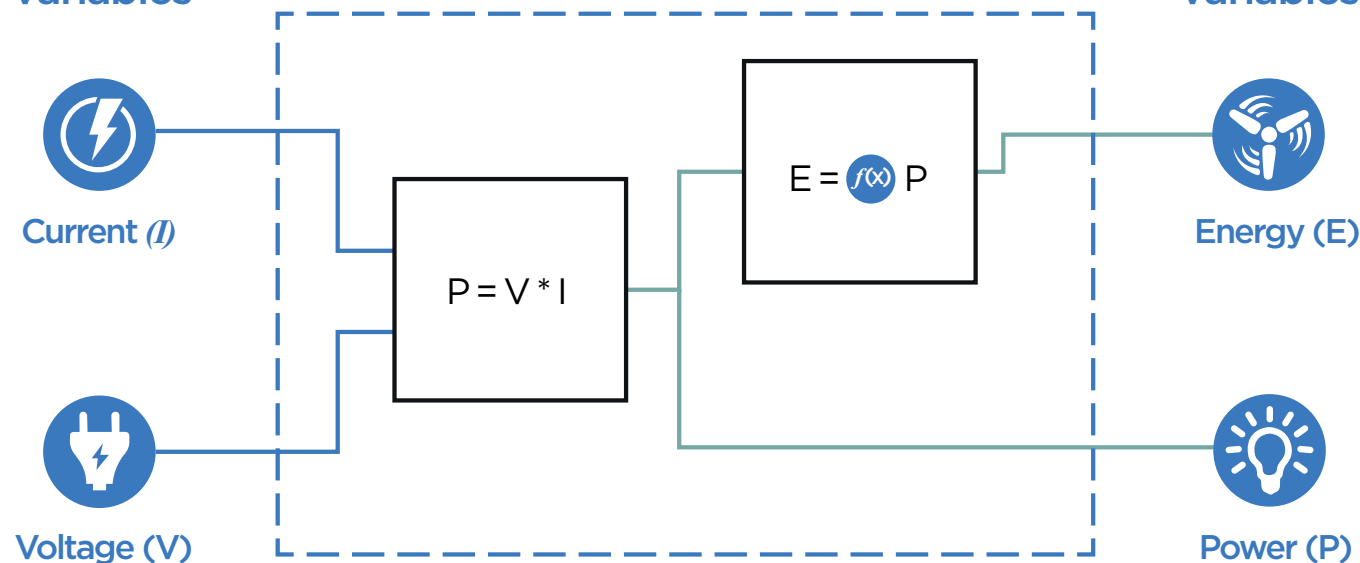
### THE POSSIBILITIES ARE ENDLESS...

Each block is completely bespoke, meaning you can decide on the layout that best matches your needs.

# SEMOTA:

## Sense, monitor, trigger, act

### Synthetic Variables



## The new remote monitoring solution from interface force

**S**EMOTA is a hardware and software solution with a web-based application that enables the remote monitoring of any load cell, force, torque or pressure sensor, using our Wi-Fi enabled hardware.

SEMOTA Continuous Remote Monitoring provides dynamic dashboard views of your events, analysis and device control. Information can be captured and stored for review and in depth analysis. Linkage to common messaging systems deliver live alerts for device management. Tailor and build applications to suit your needs and devices. Read more below, then complete the form and we'll arrange a demonstration.

### THREE YEARS STORAGE

Whether your data is needed every day or every few seconds, SEMOTA

is optimised to receive, compute, and return millions of data points across the globe.

### LIVE DASHBOARDS

Using SEMOTA point-and-click application development tools, create real-time dashboards to analyse data and control devices. Visualize data with SEMOTA stock graphs, charts, tables, indicators, maps, metrics, and control widgets or develop your own using the HTML canvas and your own code. Share your data through public links, or by embedding dashboards into custom web applications.

### EVENTS ENGINE

Add conditional and complex business logic to your hardware with triggered webhooks for M2M communication, and SMS, Email, Telegram, and Slack alerts to keep operators on-the-ball and informed.

### SYNTHETIC VARIABLES

Transform raw data into insights with Synthetic Variables that compute complex math formulas and statistical expressions.

### USER MANAGEMENT

With SEMOTA cloud software, you can build applications to best fit the operator's needs. SEMOTA administrators can configure permissions and restrictions to any end user or operator who interacts with dashboards, devices, and/or events. Need a user to be able to oversee multiple organisations? Not a problem. You can optionally add more users or organisations to your account and we can configure your users to best suit your application.

**T +44 (0)1344 776666**  
**info@interface.uk.com**  
**www.interface.uk.com**





# *Continuous Remote Monitoring*



## **Three years time storage**

3 years rolling data retention



## **Live dashboards**

Create real-time dashboards to analyze data and control devices



## **Events engine**

Keep operators on-the-ball and informed



## **Synthetic Variables**

Transform raw data into insights



## **User management**

Build applications to best fit the operator's needs

---

### **Interface Force Measurements Ltd**

Ground Floor, Unit 19, Duke's Ride, Wellington Business Park  
Crowthorne, Berkshire RG45 6LS

Tel: +44 (0)1344 776666 | Email: [info@interface.uk.com](mailto:info@interface.uk.com) | [www.interface.uk.com](http://www.interface.uk.com)

# The UK's number one sealing solutions provider

**S**ervice Sealing Solutions Ltd provide a number of different sealing solutions across the UK to both the public and private sectors. As the sole UK distributor for the sealing industry's top manufacturers; DOYMA and HKD, Service Sealing Solutions Ltd specialises in high-quality service duct sealing systems for utility services and watertight seals.

Service Sealing Solutions Ltd has the exclusive rights to distribute DOYMA products in the UK. DOYMA stands on the front line when it comes to the development of innovative, practical solutions for sealing and fire systems. Providing the very best in German engineering, DOYMA is used to seal penetration points in walls and floors to permanently prevent any infiltration of gases and water into the building. All DOYMA products are designed to solve all watertight duct sealing requirements, prevent against structural damage and incorporate rubber mouldings that ensure all gas and watertight features.

Demanding building types, such as power plants, large industrial plants, reservoirs or airports, often require highly specialised

custom-made constructions. They place high demands on the fact that building penetrations such as cables and pipe work need to be permanently sealed. In the case of extraordinary pipe dimensions or special thermal, chemical or physical requirements, sealing systems in the form of a special construction are the required solution.

Service Sealing Solutions Ltd has a large range of DOYMA products that come with a 25-year warranty. DOYMA product brochures are available on the website and include products that have been supplied to some of the UK's largest projects such as HS2 and Kings Cross in London. DOYMA has recently released its new generation Curaflex Nova® gaskets, which are the perfect solution for any professional tradesman instantly looking to solve sealing problems and can be adapted to multiple applications.

Service Sealing Solutions also supplies HKD products, which are now owned by DOYMA. HKD manufacture a large range of pipe sealing systems and service conduits that are guaranteed to withstand up to four bars pressure. HKD systems have a sealing solution for service



**Husband and wife team, Jim & Tina have recently visited DOYMA in Germany to find out about the innovative products that DOYMA have been developing**

conduits cast into concrete without the sleeves. They are supplied and ready to use, requiring no site preparation work prior to installation. With options such as KE Socketless service conduits, KG Wall Ducts and Floor Ducts, together with KG Twin Sockets for installation in pump sumps, HKD products are ideal for situations where suitability for thin-walled concrete structures is vital.

**For more information, please see below:  
T 01952 510050  
[www.servicesealingsolutions.co.uk](http://www.servicesealingsolutions.co.uk)**

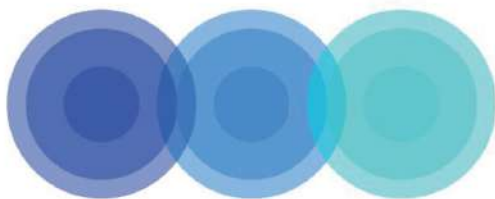




# Service Sealing Solutions Ltd – suppliers of DOYMA products



Service Sealing Solutions Ltd are the sole UK distributor of DOYMA products. Wherever services are installed through walls, ceilings or floors, penetrating water may cause damage to buildings. Lack of attention to the points of entry of pipes and cables into the building can have serious results: damp cellars, equipment damaged by water ingress and high repair costs. Service sealing systems ensure professional and perfect pipe sealing, thus presenting excellent preventative measures against structural damage. The very best in German engineering is used to seal penetration points to the wall to permanently prevent any infiltration of gases and water into the building, and the duct sealing systems are guaranteed for 25 years. Service Sealing Solutions supply the full range of products to suit all situations for power cables, communication cables, pipes and ducts, and specialising in sealing district heating pipes.



Service Sealing Solutions Ltd



**01952 510050 | [www.servicesealingsolutions.co.uk](http://www.servicesealingsolutions.co.uk)  
[sales@servicesealingsolutions.co.uk](mailto:sales@servicesealingsolutions.co.uk)**

# BTA Drilling: Brazed Versus Indexable Tooling

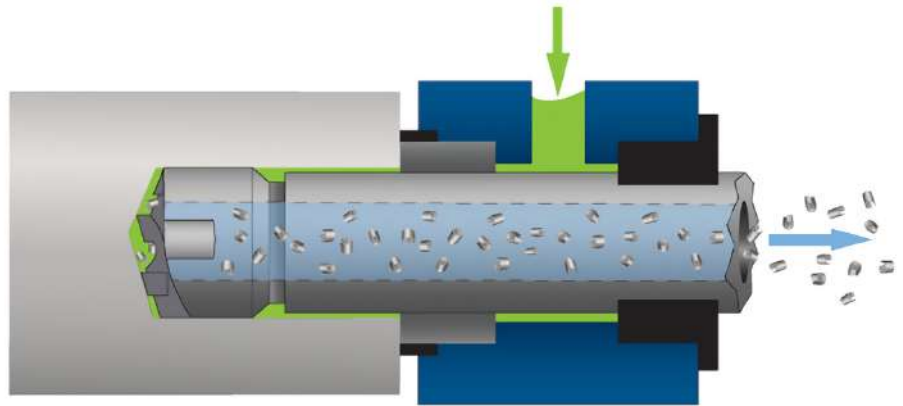
Photos: UNISIG

**D**eep hole drilling applications can be approached in several ways, but one of the most effective methods is often BTA drilling. BTA stands for Boring and Trepanning Association, although it is sometimes referred to as STS or Single Tube System drilling. Unlike gun drills or twist drills a BTA drill features internal chip removal, which has advantages in both productivity and hole quality.

The BTA drill head has multiple carbide cutting edges and guide pads mounted to it. Open spaces are designed into the head for chip removal, and chips are evacuated through the drill tube the head is threaded onto. Pressurized coolant surrounds the drill head in operation, and is key to forcing chips through the head and out the drill tube. This method of chip evacuation allows for a very clean and reliable process with excellent surface finish and high drill feed rates – typically 5-7 times faster than gundrilling at the same diameter. No peck cycles or feed interruptions are needed, resulting in reduced machine time while drilling extended depth-to-diameter ratios even greater than 40:1.

BTA drills are generally available in two forms: brazed or indexable; and tool selection is dependent upon several factors. As the name implies, brazed tools involve brazing a carbide insert and guide pads onto a steel body, while indexable BTA drilling tools have carbide inserts either directly mounted to the head with a retention screw or seated in a cartridge that is mounted to the tool.

Hole diameter is the initial consideration when determining whether to use brazed or indexable BTA drills. For small hole diameters



– generally 12 to 20mm in diameter – brazed tools are often the first choice as it's difficult to make small inserts and screws strong enough to withstand the torque and forces of BTA drilling. (Manufacturers of BTA drilling tools continue to make improvements in indexable BTA heads as small as 8mm in diameter, however).

Brazed tools offer extremely close tolerances and excellent surface finish as the insert and guide pads are mounted and then ground to the specified diameter, providing almost perfect concentricity and cylindricity. Ease of use is also a benefit – simply attach the head to the drill tube and discard it when it has dulled or failed. If you experience a tool failure, the investment in drill head isn't as costly as repairing or replacing an indexable drill head. Finally, an indexable BTA head can only be as accurate as the tolerance of the inserts themselves; but a brazed head has been ground to a very precise tolerance from the manufacturer.

By contrast, hole diameters starting at approximately 20mm favor indexable tools, primarily for economic reasons. Replacing larger diameter brazed tools is expensive, whereas indexing an insert and guide pads gives an easy extension on the tool's life. Indexable insert manufacturers also offer an exhaustive range of carbide grades, coatings and chip breakers for application-specific advantages.

The placement of the indexable inserts on BTA drill head varies by diameter and by manufacturer, and can include one or multiple inserts mounted directly to the head or set in a heat-treated cartridge, which is then mounted to the head. Guide pads are typically mounted to the head to counter the drilling forces and burnish the hole during drilling. Indexing, or rotating, a direct-mounted insert is as simple as loosening the retaining screw and turning the insert to expose a fresh cutting edge. If the insert and pocket were made with tight tolerances, your cutting diameter should remain reasonably consistent.

Cartridge-mounted inserts, however, typically incorporate a shim or other adjustment system to allow for a much more precise diameter setting after indexing inserts and guide pads. This process does require additional equipment, however, such as a micrometer and stand or tool presetter – as well as the skills needed to accurately make the necessary adjustments.

Whether you select brazed or indexable BTA drills for your deep hole drilling application, you will be rewarded with high feed rates and process reliability, along with minimal centerline deviation and excellent hole quality.

**Further information on all machines and the complete UNISIG machine program is available at: [www.unisig.com](http://www.unisig.com) or follow the company on LinkedIn and Twitter (@UNISIG).**





**UNISIG****UNISIG TAKES YOUR  
GUNDRILLING  
PRODUCTION FURTHER**

**Gundrilling and BTA deep hole drilling  
for highly productive shops.**

Whether your shop needs on-center or off-center holes, specialized job shop work or fully automated production, UNISIG has a deep hole drilling solution with the accuracy and performance you need.

Take your shop's production further - learn more at [UNISIG.COM](http://UNISIG.COM).



**Machines • Tools • Automation**

*UNISIG machines, engineered and manufactured in the USA*

**UNISIG**  
DEEP HOLE DRILLING SYSTEMS

# CMServices Global Ltd: At the heart of Industry 5.0

For many industries, whilst Industry 4.0 is still dominating with advancements in automation, smart systems, robotics, big data analytics, AI, machine learning and of course, the Internet of Things (IoT), the focus for others is already on Industry 5.0. Defined by the European Union as 'placing the wellbeing of the worker at the centre of the production process and using new technologies to provide prosperity beyond jobs and growth while respecting the production limits of the planet.' In short, we are shifting from economic values to societal ones and embracing sustainability.

Condition monitoring is an important aspect of both Industry 4.0 and 5.0 through the real-time tracking of machine functionality but with the added bonus of predictive maintenance and remote diagnostics across a whole system.

AI now brings automated processing with faultless accuracy, through seamless analysis of huge chunks of data in real-time and identifying patterns proactively, before a problem arises, such as pump cavitation. This

importantly allows on-site engineers to schedule checks and repairs before a more costly machine failure or malfunction occurs, later down the line, contributing to the five Rs of the circular economy: reduce, reuse, repair, refurbish and recycle.

CMServices Global Ltd is a market-leading consultancy, offering AI condition monitoring to diverse sectors from marine and offshore, automotive, manufacturing, food and beverage, postal sorting through to chemical, oil and gas. For decades, the annual scheduling of manual maintenance has been standard practice but with the advent of AI monitoring, irregularities can be identified through early warning prevention: smart analysis of sensor data and the comparison to standard historical data.

The Maintenance in Balance (MiB) software service from CMServices Global Ltd brings Machine Learning and AI together to provide diagnostic support for assets, through condition monitoring techniques that identify irregularities and provide further diagnostic guidance.

The MiB asset condition assessment software provides a cutting-edge, integrated platform for foresighted ship machinery maintenance and furthermore, drastically reduces inspection and maintenance costs, up to £500 thousand per ship annually. Predictive fault monitoring can decrease ship downtime from 7 to 1.5 days. With existing shipping delays due to geopolitical



conditions in the Red Sea and Panama Canal, this is welcome news for the shipping industry.

That's not all: MiB helps shipping vessels meet compliant seaworthy regulations, giving quality assurance across the board. The real genius of MiB is it supplies an extra layer of real-time prescriptive maintenance outputs, based on accurate condition and systems performance data and provides next-level operational performance across safety, regulatory, environmental and business areas.

With rising costs, the annual lifecycle costs of operating one ship amounts to a staggering £60 million and a third of the annual budget is spent on repair and maintenance, to keep ships buoyant and operational. Research has found that as much as 60% of all maintenance is in fact wholly unnecessary and can even cause more issues going forward.

It's no wonder then that MiB is in demand and when we spoke to Simon, he said CMServices Global Ltd was committed to 'eight separate current pilot projects' across cruise liners, container ships and oil and gas industries, alongside a tender process in power generation for three in Europe and two in the UK.

**For more information on MiB and other services, across any sector, please see the website below:**  
**T +44 (0)7422 079140**  
**<https://cmservicesglobal.com>**



## MAINTENANCE IN BALANCE, THE ONLY SOFTWARE YOU'LL EVER NEED!

MiB is a product/service that builds in diagnostic support for multiple assets via Machine Learning and Artificial Intelligence.

MiB incorporates the diagnostic knowledge of expert diagnosticians in the conventions of mature condition monitoring techniques and aligns this with AI functionality to identify true outliers and then offer meaningful diagnostic advice.

As more assets are managed remotely and fewer onboard personnel are sufficiently experienced to deal with all scenarios, it is becoming clear that a marriage of technology and experience is needed to balance the equation.

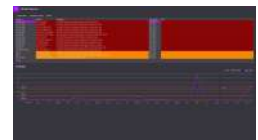
### Objectives

Using our asset condition assessment software MiB, we will create an integrated software platform for undertaking prescriptive maintenance on your ship's machinery, structures, and auxiliary systems. This will be achieved by using data from existing condition monitoring, diagnostic sensors and systems, the implementation of advanced predictive analytics and the integration of a maintenance actions/prescription database.

Based upon advanced, artificial intelligence (AI) and deep learning algorithms MiB will prescribe, the most appropriate maintenance strategy in real-time for every asset under its control, based on the subtle but pre-alarm indications of emerging faults that will occur at a future time.

### Specific objectives of MiB are to:

- Establish the monitoring and maintenance needs of each vessel
- Specify the software platform parameters based on each vessel's requirements
- Deploy our intelligent monitoring software module
- Integrate the module into the MiB platform and provide routine updates to the crew



**View the MiB interview on YouTube**

Please visit: **[maintenance-in-balance.com](https://maintenance-in-balance.com)** or contact UK: +44 (0)7422 079140 or Baltic: +370 (8)652 99978



# Hat-trick Award for Davies Turner Group

**F**or the third successive year, the Davies Turner Group have been presented with an internationally-recognised award by the Royal Society for the Prevention of Accidents, RoSPA Gold Award, further solidifying this company's position as a worldwide freight and logistics partner.

Davies Turner provides pioneering direct UK weekly rail services in conjunction with their long-term partner in China, Air Sea Transport, who has years of experience in the China rail sector.

Since 2016, Davies Turner have operated China to UK rail services for full load (FCL) and groupage (LCL) shipments, assisting clients with their supply chain needs by reducing shipping times in comparison to Sea Freight. The availability of their import rail services has been vital to clients since the advent of the pandemic, where many importers witnessed shipping line ocean transit time delays, port delays and air freight became cost prohibitive for many large volume or dense cargo shipments.

With confidence and demand for China rail freight services soaring, as evidenced by the 50,000th China-Europe intermodal train embarking on its journey towards the west at the beginning of February this year, Davies Turner have introduced and support a dedicated weekly eastbound rail service for LCL cargo, having undertaken successful trials.



Established over 150 years ago and as one of the first companies in Europe to become accredited as a Full Authorised Economic Operator, this forward-thinking company is now a bona fide international freight forwarder, with an award-winning pedigree.

The group has 15 UK branches, including a head office in Birmingham.

We caught up with Andrew Ford, Branch Manager in Rotherham, Yorkshire to find out more, "The Rotherham branch specialises in awkward and out-of-gauge shipments, shipping many vehicles ranging in sizes and type to small rail engines as well as large machinery moves around the world. Alongside this they offer standard freight forwarding – which means the Rotherham Branch can assist in almost all enquiries they receive: 'from an envelope to a large project.'"

"We have an extensive knowledge of the services that we offer within our branch, with our dedication to detail to ensure where possible shipments smoothly and clients are updated should there be any delays out-of-our-control."



"We have had a good start to this fiscal year, which was surprising with the current downturn in world trade. Our short-term plan is to improve our office environment with some renovations and also look at team building activities that had to be suspended throughout COVID. We are also looking at more training for our staff so they can gain even more experience and knowledge to help assist our clients."

Despite most of the COVID-pandemic restrictions lifting and shipping costs starting to decrease, the world of international freight still has to contend with the challenges posed by the war in Ukraine, port strikes and a near-global recession.

Davies Turner offers a light at the end of a gloomy tunnel with its express freight rail service and its extensive European overland portfolio with direct groupage, part load and full load trailer services. Customers can choose between express transit and super-express options, in a thoroughly streamlined system.

**For all transportation quotations and further information, please see the details below:**

**T 01709 529709**

**[rotherhamsales@daviesturner.co.uk](mailto:rotherhamsales@daviesturner.co.uk)**

**[www.daviesturner.com](http://www.daviesturner.com)**



# ERG (Air Pollution Control) Ltd cleans up

The ERG group has over 40 years' experience and operates through three divisions. The powerhouse of the group is the first of these, ERG (Air Pollution Control) Ltd. This division has highly qualified and experienced teams of chemical, mechanical and electrical engineers who, together with design engineers, project managers and procurement professionals, design and supply bespoke gas scrubbing systems and odour control plants to meet their clients' requirements.

ERG solves the full spectrum of gas cleaning challenges facing its clients; whether it is a requirement to remove foul odours from air under ambient conditions prior to release into the atmosphere, right up to scrubbing streams of process gases at high temperatures, high pressures, or in explosive environments to remove toxic or aggressive pollutants. The level of technical sophistication and bespoke engineering content is each project is specific to the clients' needs, with industrial applications typically demanding the highest processing technology.

The commercial driver leading clients to invest in ERG's systems might be a pressing requirement to comply with government regulations or with the emission limits set in an operating licence issued by an appropriate agency. For other clients, ERG's expertise is often sought to clean up gas streams that form an integral part of the client's production process. For example, in the green energy sector ERG's systems purify biogas or syngas that they have generated, so that the client's process runs more efficiently with lower pollution levels. In some cases, ERG's gas cleaning systems can even generate by-products, which become value added saleable side-streams.

Based in West Sussex, ERG has grown its business strongly over the years to build up a global sales network and client base.

An office in Jordan services ERG's business throughout the Middle East region, and is fully staffed with design engineers, project managers and local sales managers. A satellite sales office in Dubai completes the Middle East structure.

ERG (Plastic Fabrication) Ltd is the manufacturing division for the group and specialises in the high-quality custom fabrication of tanks, vessels, pipework and ducting from GRP and composite plastic materials, and which are used in the systems designed by ERG (Air Pollution Control). ERG (Plastic Fabrication) Ltd also welcomes commissions direct from 3rd party customers. It has a vast arsenal of services to offer clients, and has specialist experience in manufacturing using a wide range of plastic materials including PVC, CPVC, Polypropylene, PVDF, and other specialty plastics for harsh environments such as ECTFE.



Finally, the group includes ERG APC Maintenance Ltd. This division's mission is to provide servicing and maintenance support to customers throughout the lifetime of their air pollution control system. Service can be provided under contract to include a routine preventative maintenance servicing schedule designed to maintain system performance. Alternatively, maintenance can be provided on an ad hoc basis as and when required.

All three-company divisions are now based in superb new purpose-built office and factory facilities in West Sussex, which were completed in 2021. Having all divisions on the same site significantly enhances working efficiency, design quality, production quality, and production capacity.

**For more information, please contact  
ERG (Air Pollution Control) Ltd at:  
T 01403 290000  
Middle East Office +962 6515 9021  
info@ergapc.co.uk  
www.ergapc.co.uk**



## ERG (Plastic Fabrication) Ltd

At ERG (Plastic Fabrication) Ltd, we specialise in the high quality custom fabrication of process industry vessels and associated components from GRP and composite plastic materials.

With almost 40 years experience of supplying tanks, scrubbers, filters, silos, vessels, piping and ducting, we are sure to be able to meet your requirements with high quality products at competitive prices.

### Plastic Fabrication – Materials of Construction

Depending on your specific requirements we can fabricate from a wide range of common plastic and composite materials including:

- PVC – Poly Vinyl Chloride
- UPVC – Unplasticised Poly Vinyl Chloride
- PPVC – Plasticised Poly Vinyl Chloride
- PP – Poly Propylene
- HDPE – High-density polyethylene
- GRP – Glass Reinforced Plastic

**For more information, call 01403 291 000,  
email [info@ergpf.co.uk](mailto:info@ergpf.co.uk) or visit [www.ergpf.co.uk](http://www.ergpf.co.uk)**







# Davies Turner: Leading the way in freight forwarding, sustainability, and global logistics

**Davies Turner**

**D**avies Turner is a renowned and long-established freight forwarding and logistics company based in the United Kingdom. Founded in 1870, the company has built a legacy of excellence in transportation and logistics, making it one of the oldest independent freight forwarders in the UK.

As one of the pioneering economic operators in Europe, Davies Turner has grown to become a global leader in the freight forwarding industry, continuously evolving to meet the demands of an ever-changing market.

A family-owned business, Davies Turner operates a robust network of 23 branches across the UK, many of which are home to expansive warehousing facilities. At the heart of its operations is the company's headquarters in Coleshill, which serves as the central hub for its extensive network.

Recently, the company introduced a state-of-the-art multi-user fulfilment centre and logistics hub in Atherstone, Warwickshire. This impressive facility spans four levels, with each floor offering 35,000 square feet of space and a remarkable capacity for 20,000 pallet locations. The company's regional influence is further evidenced by its Rotherham site in South Yorkshire, which features offices staffed with seasoned professionals, all under the leadership of Branch Manager, Andrew Ford.

"We specialise in the more awkward and out of gauge shipments that our competitors might not have the same experience with. Over the years, this has included vehicles and machinery of all shapes and sizes and even small rail engines. We can help with shipping anything out of the ordinary that may need a special licence and enjoy the challenge of shipping more unusual items!"

Davies Turner stands as the only freight forwarder operating a dedicated weekly rail import service from mainland China to the UK, providing a vital lifeline for many UK businesses. This express freight rail service departs weekly from Xian in Central China, accommodating both groupage and full load



shipments. With the growing concerns over the slower speed of ocean freight and the high cost of air freight, rail offers a cost-effective and reliable alternative. The LCL rail freight service delivers goods in just 19-23 days from terminal to terminal, and is, on average, 70% more affordable than air freight.

In alignment with the UK Government's ambitious 2050 Net Zero targets, businesses are increasingly encouraged to prioritise transparency regarding their carbon emissions. Recognising the importance of sustainable logistics, Davies Turner is leading the way in adopting greener practices. By promoting rail transportation as a more environmentally-friendly alternative to air freight, the company is committed to significantly reducing its carbon footprint while maintaining efficient service.

For instance, consider the stark contrast in emissions: A 40-ft container laden with 20 tons of cargo generates a mere 4% of the equivalent CO<sub>2</sub> emissions when transported by rail compared to air shipment. Embracing this ethos, Davies Turner has embarked on a transformative journey, forging a partnership with Pledge to meticulously track and report all company carbon emissions.

This strategic collaboration not only underscores Davies Turner's dedication to environmental stewardship but also empowers clients with a tangible means of quantifying and addressing carbon emissions across international supply chains. By embracing such initiatives, the company and its

clientele are poised to make significant strides towards achieving Scope 3 emission targets and fostering a more sustainable future.

With the ongoing conflict in Ukraine, disrupted shipping market in the Red Sea and Panama Canal, and sporadic port strikes, many businesses have faced huge shipping delays over recent months.

"With many volatile hot spots around the world currently, we monitor situations closely on behalf of our customers. Having a regular Chinese rail service that navigates deftly round the Red Sea Shipping crisis, keeps supply chains running across the world. To reiterate this point, in December 2023 a customer asked to trial a rail shipment with us from Shanghai to the UK, alongside a pre-existing ocean shipment from the same route with a different company. The results were conclusive: the rail shipment took 18 days terminal-to-door, whereas the ocean shipment took 45 days and also ran over the estimated time schedule," said Andrew.

Davies Turner has built a strong reputation as a trusted partner for businesses seeking efficient and cost-effective logistics solutions in the UK and beyond. With a focus on sustainability, and its reliable and trusted customer service, it comes as no surprise that Davies Turner was named Number One Logistics Service Provider by Logistics Manager Publication in December 2023, in its annual list of the Top 50 UK logistics service providers. One of the key metrics for this decision was the 74.4% increase in turnover for the financial year, ending in 2022, with a record turnover of £350.6 million. Alongside the exclusive new opening of the £40 million state-of-the-art logistics hub in Atherstone, this is a very exciting time for Davies Turner.

**For all Air, Sea, Rail and Road freight quotations and further information, please see the details below:**  
**T 01709 529709**  
[rotherhamsales@daviesturner.co.uk](mailto:rotherhamsales@daviesturner.co.uk)  
[www.daviesturner.com/specialist/rotherham-specialists](http://www.daviesturner.com/specialist/rotherham-specialists)

## Biogas & Ventilation



Specialising in quality equipment for tank storage, process safety, and fluid transfer, we offer dedicated maintenance and expert technical support. Rooted in our commitment to you and the environment, we champion emission reduction and quantification, merging efficiency with ecological accountability.

**T +44 (0)1726 844707**  
**info@assentech.co.uk**  
**www.assentech.co.uk**

## Farming



A small 18-acre working family farm in the market town of Oakham, the county town of Rutland, England's smallest county.

**T 01572 722122**  
**admin@rutlandfarmpark.co.uk**  
**www.rutlandfarmpark.co.uk**

## Roofing



We have been at the forefront to design, innovate and manufacture materials and products to make buildings and flat roofs watertight. As the world above and below the roof is constantly changing, so do we to adapt and offer sustainable, durable and easy-to-install roofing and facade systems.

**T +44 (0)1623 627285**  
**info.uk@ccm-europe.com**  
**www.ccm-europe.com/gb**



## UK Machinery



Machine Operators – Software Engineers  
 – Electronic and Hydraulic Engineers

We have an excellent skill force and team to back up our sales with 24/7 Support Network.

Over 35 Years of experience.

**T 01482 420491**  
**info@machinesupplies.co.uk**  
**www.machinesupplies.co.uk**

## Marine, Offshore, Chemical, Oil & Gas



MiB is a product/service that builds in diagnostic support for multiple assets via Machine Learning and Artificial Intelligence.

**T +44 (0)7422 079140**  
**simon.edmondson@**  
**cmservicesglobal.co.uk**  
**maintenance-in-balance.com**

## Noise & Vibration Measurement



We manufacture and supply high-quality acoustic measurement instrumentation. Cirrus Research is dedicated to the prevention and eradication of noise-induced hearing loss and environmental noise pollution.

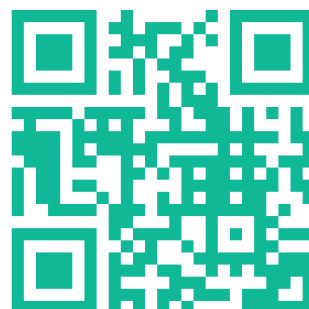
**T +44 (0)1723 891655**  
**https://cirrusresearch.com**

## Metal Improvements



Curtiss-Wright surface technologies provides customers a single-source solution and point of contact for all their controlled material surface treatments, supporting their requirements through our global network of over 70 worldwide facilities and on-site field teams, improving and reducing turnaround times and costs.

**T +44 (0)1635 279621**  
**eurosales@cwst.com**  
**www.cwst.co.uk**

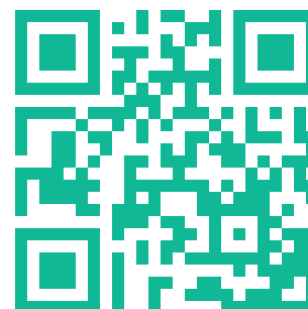


## Industrial Applications




Working with light since 1931, CML is the market leader in the field of miniature lighting for signalisation. As one of the first companies to introduce LED lamps, nearly 30 years ago, CML is now the supplier with the broadest range of miniature lighting products in the world.

**T +44 (0)1284 714700**  
**uksales@cml-it.com**  
**https://cml-it.com/en**





## Motor Technology



**MENZEL**  
ELEKTROMOTOREN

Your B2B partner for customized electric motors – trusted since 1927

As a German manufacturer, we offer individual motor solutions worldwide. Our quick adaptations and customized designs up to 25MW and 13.8kV ensure the smooth operation of your industrial machinery.

**T +44 (0)1664 500844**  
**info@menzelgb.co.uk**  
**http://menzel-motors.com**

## Air Pollution Control Systems



**ERG**  
Air Pollution Control

Providing specialist industrial air pollution control, gas treatment and odour control packages – turnkey supply of the complete system: design, supply, installation and commissioning – all backed by a process guarantee.

**T 01403 290000**  
**info@ergapc.co.uk**  
**www.ergapc.co.uk**

## Deep Hole Drilling

**UNISIG**  
DEEP HOLE DRILLING SYSTEMS



Our industry-leading customers around the world rely on UNISIG® deep hole drilling technologies for powerful, productive solutions and value. We engineer our machines to handle a complete range of applications, and support them with our high level of expertise and service.

**T +49 (0)7125 9687590**  
**https://unisig.com**

## Electrical Products

**Gromtec europe simon**



The SIMONBOX IP66 watertight floor box is designed for use in hard floor areas which require occasional power and data connection and an IP protection rating. Typical ip66 waterproof floor box installations include Department Stores, Airports, Train Stations and Car showrooms.

**T 0203 286 7949**  
**simonbox.co.uk**

## Sealing Solutions




**Service Sealing Solutions Ltd**

Service Sealing Solutions are the sole UK distributor for the sealing industry's top manufacturers; DOYMA and HKD.

**Contact**  
**T 01952 510050**  
**www.service sealing solutions.co.uk**

## Measurement Applications



**interface**  
FORCE MEASUREMENT SOLUTIONS.

Interface Force Measurements Ltd is the master distributor for Interface load cells in the UK, Ireland, Middle East and North Africa. While we are separate companies, our interests and values are closely aligned in a long-term commercial relationship spanning over 30 years.

**T +44 (0)1344 776666**  
**interfaceforce.co.uk**

## Emission Monitoring & Gas Control




**ECO PHYSICS**

ECO PHYSICS AG offers innovative analytical solutions for measurement tasks in the fields of environment, health and process control.

**T +41 55 220 22 22**  
**info@ecophysics.com**  
**www.ecophysics.com**

## Hand Protection



**MANOSUN**

Manosun hand protection want to bring a change to the end-user experience in selecting and buying industrial gloves, gauntlets and sleeves (PPE).

**Contact**  
**T +44 (0)191 300 8699**  
**sales@manosun.co.uk**  
**www.manosun.co.uk**

# 75 Years of Research & Development have allowed us to hone our expertise and to produce design and engineering excellence

W J Horrod Ltd has been manufacturing equipment for the roofing industry since the late 1950s.

Recognised as the leading manufacturer for Safety and Efficiency, Horrods is a family owned business based in London, as it has been for its 75 year existence.

SMS Thermostat Control  
Bitumen Boilers



Safety Melt Series 4:  
Thermostatically Controlled  
Bitumen Boiler

2 Drum 110 Volt Electric  
Agitation model gas-fired

