

BUILDING UPDATE

ISSUE: 686 May | www.solutionspublishing.co.uk



STEEL BUILDING SOLUTIONS

+ SINGLE SKIN + COMPOSITE + ROLLER DOORS + WINDOWS +



INDUSTRIAL



AGRICULTURAL



DOMESTIC

+ SKYLIGHTS + PERSONNEL DOORS + INSTALLATION OPTIONS +

GET A FREE ON-LINE QUOTE AT
WWW.CASTLESTEELBUILDINGS.CO.UK

OR CONTACT US ON

01302 301402

INFO@CASTLESTEELBUILDINGS.CO.UK



Avrame UK
see them on.....II



W J Horrod
see them on.....IV



Swifex
see them on.....VI-VII



Playcraft Group
see them on.....XII



Independent Access Sales
see them on.....XIII



Kedell
see them on.....XIV



Checkedsafe
see them on.....XVIII

Feeder Pillars

We manufacture and supply a huge range of Feeder Pillars to suit every purpose in galvanised or stainless steel and GRP, Shell only or pre-wired



For every type of power distribution, EV Charging, MRI for Hospitals, Sports & Leisure, Parks & Gardens, Events & Markets, Multi-Service & Multi-User



We keep a wide range of quality Feeder Pillars in stock. Bespoke and made to order delivered from 2-3 weeks!

Belisha & Refuge Beacons

AmberGLO8

8W LED Beacon with amber globe and aluminium gallery with 3No. Reflective white bands. Reliable and long lasting



OlympiadIPB

30W total LED Beacon High Visibility with illuminated and reflective white banding



Lodestar

LED Refuge Beacon 12W with Pearl Globe and Traffic Grey Gallery



Sentinel26

Refuge upgrade 26W total High Visibility LED Beacon with 2No. Illuminated reflective white bands. Suitable for retro fit or new install.



Full range in stock - Complete Beacons and accessories - Courtesy Shields, LED Crossing Spotlights, Bracket Arms and retrofit spares such as Reflective White Bands etc.



Contact our Sales Team now on **0333 666 2122** or email **info@fisherandcompany.co.uk**
Visit **www.fisherandcompany.co.uk** to view our range of products

1-4 Cary Court,
Somerton Business
Park, Somerton,
Somerset TA11 6SB



www.facebook.com/solutionsuknews | @Publishing_2016

Creating perfect sleep and storage solutions

Wallbed Systems offer an exclusive range of beautiful wall bed hardware designs to furniture manufacturers and retailers, hardware distributors and retailers, hotel and hospitality contractors around the world. This sleeping solution works perfectly in hotel rooms, micro-apartments, small bedrooms, a home office and student accommodation, providing an excellent hybrid living, working, studying and sleeping area, fully maximising the space available.

Wallbed Systems Ltd. is a London-based global business established by Managing Director, Jeremy Waller, who has extensive experience selling mattresses and beds

across Asia, who saw opportunities for sensible designs of reliable, safe and flexible wall beds, which could feature comfortable mattresses. With the latest designs and accessories (such as with the Alpha bed and Studio desk pairing) small or odd shapes rooms are transformed into multi-use spaces with cleverly concealed sleeping areas.

Contact Jeremy Waller,
T +44 (0)208 704 5796
T +44 (0)7780 661958
jeremy.waller@wallbedsystems.co.uk
www.wallbedsystems.co.uk



House Kits

Avrame UK highlights Economic Perks of A-frame kit homes for income-generating getaways

A-frame homes are making a bold return, fuelled by rising construction costs and the growing demand for distinctive travel experiences. Once a staple of mid-century design, these striking triangular structures are regaining popularity as an affordable and eco-friendly housing option.

First gaining traction in the 1960s and 70s, A-frames were admired for their practicality. Their sharply pitched roofs make them resilient in varied climates, while their minimalist structure keeps expenses manageable. With today's surging property prices, they are emerging once again as a smart housing solution. Kit homes, such as those from Avrame, simplify the process further, providing pre-cut materials and clear assembly guides that allow individuals to construct their ideal space with minimal hassle.

As modern travellers seek accommodations that go beyond the ordinary, A-frame cabins have become prized getaways. Generic hotels are losing appeal, while secluded stays – tucked away in scenic landscapes – are thriving on Airbnb. These charming retreats, often booked far in advance, offer a perfect blend of coziness and exclusivity. In response to shifting preferences, Airbnb continues evolving, curating unique experiences that make properties even more appealing.

Leading the charge in the UK, Avrame is bringing A-frame kit homes to a wider audience.



Their energy-efficient designs provide practical solutions for those looking to build sustainable, cost-effective spaces. With flexible layouts and a simplified building process, Avrame UK enables

homeowners to create stunning residences, rental properties, or remote escapes – all without the burden of traditional construction costs. As affordability and sustainability take centre stage, A-frames offer a fresh, elegant answer to modern housing challenges.

If you would like to book your own Avrame experience here are links to rent a lodge:

Reece in Calvert Kielder, Kielder Water & Forest Park, Hexham, Northumberland

Sara J in Calvert Kielder, Kielder Water & Forest Park

To register interest in Duo 57 near Brighton: <https://www.qleisure.co.uk/#a-frame>

To explore more or to build your own visit Avrame UK at: www.avrame.co.uk and start turning that weekend getaway dream into a real-life (income-generating) plan.

T 01237 730870
M 07772 377102
mail@avrame.co.uk




A truly global house kit maker

LEARN MORE



Avrame.co.uk 01237730870
mail@avrame.co.uk 07772377102



Duo 57 PLANSET PRO PLAN £149

Duo 58 PLANSET PRO PLAN £299

Duo 59 PLANSET PRO PLAN £224

Duo 60 PLANSET PRO PLAN £598

next bed™

LEADING FOLDAWAY BED SUPPLIERS



Wide Range



Highest Quality



Competitive Prices



next bed™

Wallbed Systems designs, develops, manufactures, and distributes a wide range of wall bed systems to 27 countries around the world.



Alpha Bed™ & STUDIO DESK

Alpha Bed™



Wallbed Systems Ltd.

www.wallbedsystems.co.uk

Jeremy.Waller@wallbedsystems.co.uk

+44 208 704 5796 | +44 7780 66 1958

75 years of W J Horrod Ltd

This year, W J Horrod Ltd, an award-winning, family-owned business, proudly celebrates 75 years!

Founded in 1950 by brothers William John and Alex Horrod, W J Horrod Ltd began as a repair service, leveraging their military engineering experience. It quickly evolved into a leading manufacturer of asphalt and bitumen equipment, as well as civil engineering and highway maintenance machinery.

Incorporated in 1961, the company was named after their father William John Horrod Snr, whose financial support made it possible. Over the years, it remained a family business, with younger brothers and later generations taking the helm. Today, second-generation directors Kim and Terry run the company, with third-generation apprenticeship to carry on the legacy.

For 75 years, W J Horrod Ltd has been at the forefront of manufacturing equipment for industrial solutions. Based in London, the company is widely recognised as the industry leader in safety and efficiency.

Horrods thrive on challenges: continually developing, designing, and testing new products to ensure customers have the very best machinery and plant for each project. Over the years, Horrods has worked across mainly the 'building' industry, but its expertise is not strictly limited to it. The company has provided all



manner of products for manual handling, with clients ranging from the Royal Opera House, to the QEII Conference centre and Billingsgate Market. Their product range is extensive, and includes everything from the SwiftMelt Mastic asphalt mixer to Hotboxes, Hot Air Rubber Materials melters, and thermoplastic pre heaters (whiteliners.)

Always at the forefront of safety, quality and efficiency, Horrods' range of services also include operator training, a hire service

for many of its products, consultation on heating/decanting of new materials, research & development for problem solving, health & safety, and the ability to collaborate with Health & Safety Executives.



Terry Horrod Snr truly championed health & safety and advised HSE on good practices until the early 2000's. Safety continues to be the watch word at Horrods today, as many of the larger products have moving parts using LPG Propane Gas or electric elements, and are heating vessels that produce hot materials.

Working alongside AYM, Horrods takes safeguarding very seriously, prioritising safety alongside quality. Every product is crafted using the highest-quality components and undergoes a rigorous design process, including longevity testing. Additionally, they ensure that products are easy to service and monitor once they leave the workshop.



For more information, please contact the team on the details below:
T 020 8539 5746
<https://www.wjhorrod.co.uk>

Recruitment

Goland Recruitment

Here at Goland Recruitment Ltd, we have extensive network and experience in placing exceptional candidates for the role you require. Whether it be in Construction, Retail, Hospitality or Commercial we are at your disposal to do the leg work for you.

Save time and money when recruiting for temporary or permanent/full-time position as we spend a considerable amount of time reading through the specifications and searching for exceptional candidates.

Please give us a call or drop us an email today if you require our assistance and we will do our best to get you the right person for the job at a rate that suits your budget.

Our full time placements fees are normally 12% to 15%



depending on the role and the salary, we now however have a set rate for all permanent roles placements of 8% no matter what the salary, but for your first two placements we are running a special offer of 5% across the board so don't miss out.

Please keep us in mind for all your Recruitment requirements, much appreciated.

Please see details below:
T 01908 102078
info@goland.group
www.goland.group
<https://www.facebook.com/2017goland>

RECRUITMENT SPECIALISTS

- RETAIL
- CONSTRUCTION
- WAREHOUSE
- OFFICE

QUALITY DRIVEN RECRUITMENT

NEW CLIENT OFFERS AVAILABLE - CALL NOW

T: 01908 102078

info@goland.group www.goland.group

Bluerun Ltd achieves excellence in the workplace

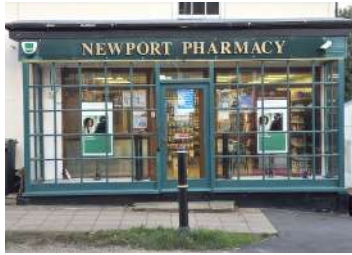
In this issue of Building Update, we are proud to announce that we have selected Bluerun Ltd as the recipient of our Custom-Made Joinery Excellence Award for 2025.

Upon reopening its doors in May 2020 after the COVID-19 pandemic, Bluerun Ltd has gone from strength to strength with its trusted brand now being known as one of the best in the joinery industry that has recently attracted big name brands turned clients, Starbucks and Waitrose.

Since 2022, the company has continued to strengthen in terms of revenue and new business. It has managed to maintain a strong conversion rate despite the current economic crisis and has found that enquiries for larger jobs as opposed to 'single window' types of jobs has been more popular especially from domestic clients.

Based in Wimbish, near Saffron Walden in Essex, Bluerun manufactures quality, bespoke joinery items for the commercial market from door and window packers to shopfronts, reception desks, mainframes, pub doors, and years ago, even made a trebuchet for Stansted Mountfitchet castle!

Of course, the company has the capabilities to manufacture most things from timber, hardwood, softwood, panels and sheet material. Some common items Bluerun Ltd manufacture for the domestic



building market include windows, doors (exterior and interior), bi-folding doors, staircases, bespoke storage units and wardrobes, all of which come with the option of being sprayed in primer or to a finish.

If you're looking for items made from both hard and softwood or even veneered and painted panels, Bluerun can reproduce

an array of items including replacement sashes, where it can manufacture a brand new one on a like for like basis, so the mouldings will match. Similarly, if a domestic client has found an image of a door that they would like reproduced, Bluerun can usually do that. Recently the company has started using a glass supplier that supplies them with stained glass effect units, complete with leading that has been aged and soldered.

Bluerun only produce purpose made joinery to client's drawings and specifications. Its unrivalled level of customer services means that free quotations are normally provided within 2-3 days or less, and the company can usually deliver a quick turnaround of any manufactured items required. And, because it has an experienced spray operative in charge of a modern spray paint and lacquer facility, articles can leave the factory in a fully finished state, ready for installation on-site.

What really sets Bluerun apart is that since its establishment it has never used computer aided machinery for any designs. Crafted to perfection, all

items are finished by hand, drawings are prepared with pencil and paper, and everything that is manufactured by the team has been done so with the utmost attention to detail. It also has the ability to obtain colour matches of any paint colours for clients that would prefer something sprayed to a finish.

Apart from needing the item to fit out its workshop doors upon completion, there is no limit to any project that Bluerun will endeavour to take on. Inspired by a challenge, Bluerun will do its utmost to cater to all enquiries.

Contact
T 01799 599995
dee@bluerunltd.co.uk
www.bluerunltd.co.uk

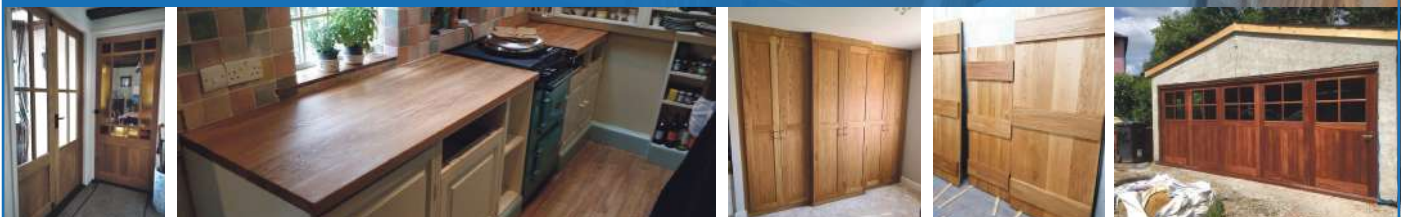


Bluerun Limited
quality bespoke joinery since 1991

**QUALITY, CUSTOM
MADE JOINERY**



Bluerun Ltd have been manufacturing top quality, purpose made joinery for the domestic and commercial markets for over 30 years.



Please visit our website: **www.bluerunltd.co.uk**

Tel: **01799 599995** | Email: **dee@bluerunltd.co.uk** f **bluerunltd** @ **bluerun_joinery**



INNOVATIVE PRODUCTS TO ENABLE FIXING THROUGH EXTERNAL WALL INSULATION

Our products are one of the most cost-effective solutions to enable the fitting of external furniture through external wall insulation and rain screen cladding, with the added benefit of being designed specifically for the job. Fully Pas2035 compliant for the future of retrofitting and the Modular housing sectors and the ideal solution for a longer term maintenance provision.

All fittings meet stringent technical requirements by preventing the compression of insulation and providing a watertight seal. They are also approved by many leading manufacturers and organisations developing modern methods of construction to support the requirement for new homes in the UK.



INNOVATIVE

A new cost-effective way to fit external furniture through walls and cladding



ROBUST

Super-strong to prevent insulation compression and provide a watertight seal



EASY TO INSTALL

Simple yet effective next generation solutions. See for yourself



To find out more, please visit www.swifix.co.uk,
call **01884 211540** or email info@swifix.co.uk

Sustainable Construction

In this issue of Building Update we have featured Support for Success for its Commitment to Excellence in the Building Industry.

Support for Success is a forward-thinking company when it comes to green skills training and consultancy. In a world facing serious environmental challenges, Support for Success offers initiatives that are necessary for a healthy future.

Offering courses developed in collaboration with industry experts and esteemed entities, this collaborative approach ensures the credibility and relevance of its offerings, whilst making them a leader in the field.

We spoke to Paul Brown MCGI MlOL, Managing Director, who explained to us what sets Support for Success apart from other training providers in the building and construction industry.

"Our training approach combines accredited certifications from the NOCN, CITB, and CPD with a strong emphasis on practical skills, not just theoretical understanding. By integrating these elements, we ensure that our courses are effective, up to date and contribute to the advancement of the sustainable building and retrofit industry."

We maximise the potential of experienced workers by assessing them and offering the courses as a route to the required qualifications – meaning those who take part know that they're fully up to date with the current specifications and have mastered the craft of the practical element. Our goal is also to empower the young and old to choose a career within green skills, we believe we can ignite the spark within the next generation for a more sustainable future.

We set ourselves apart by proudly designing these courses with a fabric-first approach."

Each course has been meticulously designed to meet critical skill gaps in today's UK construction and building sector. Specifically for the retrofit sector, these courses cover insulation measures which are new to the industry and an area that needs improved quality.

Its most popular course is Inspection Maintenance and Repair of External Wall Insulation. Paul explained this course in more detail:

"This course is a key player in our portfolio as it is a one-day course that can be offered on our premises or any of our partner premises across the UK, resulting in a Level 3 Certificate of Competence."



**SUPPORT
for success**
Green Skills Training And Consultancy



"Our primary goal with this course is to ensure that all participants are well-equipped to maintain the integrity of EWI installations, thereby safeguarding the validity of warranties and guarantees throughout their operational lifespan. Learners receive an assured Level 3 Certificate in Competence issued by the awarding body The NOCN post attendance, this not only enhances the learner's employability and career prospects but also ensures compliance with safety standards and positions them as a credible and adaptable professional in a competitive field."

Other courses include Floor Insulation, Understanding Domestic Retrofit, Internal Wall Insulation, Draught Proofing, and many more. To ignite the spark within the next generation of potential workers in building and construction, Support for Success is working closely with the Green Skills Advisory panel – GSAP, to try to engage young people to aspire for a career in the industry.

"GSAP is a dynamic and forward-thinking movement dedicated to shaping the future of sustainable construction across the United Kingdom. This is where our company was born as we knew we needed to create something that would completely innovate the green skills training sector. We know that the current industry has a shortage of skilled labourers, and this poses a challenge - by working closely with Exeter College and other educational sites, we advocate and aim to inspire young people to join the world of green skills to show that green construction and sustainable living is paramount to ensure a healthy future," added Paul.

In an industry that is already saturated with training courses, we asked Paul how can experienced workers benefit from their courses.

"Experienced workers can benefit from our courses as they will be

able to fine tune their practical skills to ensure the highest quality is upheld and they are able to refresh their knowledge during theoretical elements – ensuring they are up to date with the latest information and news within the appropriate sector."

Support for Success demonstrates its commitment to excellence in multiple ways – most notably by ensuring all lecturers are highly qualified and possess substantial industry experience. This guarantees that participants receive instruction that is not only relevant and practical but also delivered with expertise and confidence.

"Our classrooms will always harness and provide a friendly, collaborative, and motivating environment where learners can develop the green skills essential for sustainable building practices and effective retrofit solutions."

"Another way we achieve commitment to excellence is by welcoming fresh ideas and insights into how we can improve – we understand the industry is ever evolving so we welcome all participant feedback with open arms. We also stand open to suggestions and stay up to date with information to guarantee that we match up with the latest industry specifications," added Paul.

Support for Success continues to raise the bar for green skills training, standing as a shining example of how innovation, collaboration, and commitment to sustainability can transform the future of construction. Its forward-thinking approach, industry-aligned courses, and dedication to empowering both new and experienced professionals, means that organisations like Support for Success are not only meeting the moment – they are leading the way.

Contact
T 01884 211542
info@supportforsuccess.org
www.supportforsuccess.org

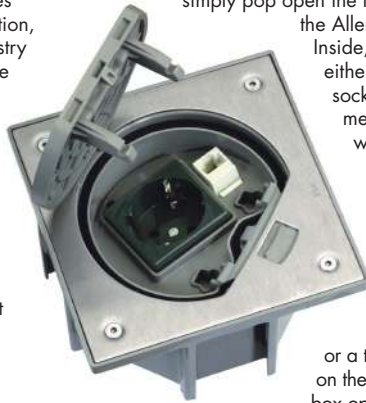


SIMONBOX: Revolutionising electrical installations with elegance and efficiency

The SIMONBOX IP66 exemplifies outstanding quality and innovation, setting a new standard in the industry by addressing the design challenge of making a waterproof floor outlet which is easy to access and easy to use.

Designed for use in hard floor areas which require occasional power, data connection, and an IP protection rating, the SIMONBOX IP66 plays a significant role in the advancement of electrical solutions.

For example, its ease of use is remarkable. There are no lids to unscrew or extra parts to assemble. Users



simply pop open the lid using the standard slide or the Allen key security mechanism. Inside, the outlet can be fitted with either a UK 13amp or 5amp socket. When in use, the outlet meets the IP20 standard, and when closed, it achieves IP66 protection.

The SIMONBOX is available in two finishes: brushed stainless steel and brass. Users have the option of selecting waterproof sockets, with choices for a flush floor or a trimmed box finish. Depending on the floor type, there are two back box options: one for screed floors and another for raised or suspended floors.



display areas, and over the years, the SIMONBOX has gained popularity in a diverse range of commercial applications, including airports, car showrooms, shop fit-outs, and concourse areas.

What's more, one of the first UK retail chains to specify the SIMONBOX was NEXT HOME over a decade ago and today, it remains an integral part of NEXT's commercial fit-out specifications. Additionally, the SIMONBOX has seen growing popularity in both private domestic projects and larger commercial applications.

CE and UKCA certified, find SIMONBOX available via your local electrical wholesaler or online at: www.gromtec.co.uk

Get in touch for more information: info@gromtec.com



When installed in a concrete floor, the SIMONBOX is designed to sit flush with the surrounding surface. For raised floor installations, commonly used in decking projects, the SIMONBOX sits slightly elevated to prevent water pooling around it. Internally, the back box features a self-drain opening for added protection.

Correctly positioned floor boxes ensure that power sockets are located exactly where needed, eliminating unsightly and hazardous trailing cables. The SIMONBOX is frequently used in projects requiring occasional floor outlets, such as pop-up

Gromtec
europe Ltd.

simon

SIMPLY SIMONBOX: IP66 watertight floor box

In 2012, Gromtec introduced the IP66 SIMON floor box to the UK market. The 'SIMON-BOX' proved a game changer, providing a cost-effective and practical waterproof floor box solution. Primarily designed as an 'occasional' floor box, the outlet sits flush in a tiled floor area. When closed the SIMONBOX is watertight, allowing tiled areas to be wet washed when required. The outlet also features an internal drainage system. This pioneering product has been consistently specified by consulting engineers and architects for a wide range of commercial and domestic projects. End users include John Lewis, NEXT Home Store, and Heathrow and Gatwick Airports.

The next generation of the SIMON-BOX is now available. Made with a matt black or stain-less steel finish, the outlet is offered as a single or twin outlet with a data or USB charging option. For a sneak preview go to: www.gromtec.co.uk

The new revised SIMONBOX site will be coming soon. For more information email: info@gromtec.com or call: 02032 867949



Frequent waste extraction blockages requires system analysis

A large packaging manufacturer in Northern England endured a waste extraction system plagued by daily blockages due to 30 years of incremental changes without a major waste system review. Paramount initially addressed the issue with a small project, installing a new in-line Paramount Shoe diverter. Unlike traditional diverters, this unique design operates while waste flows and prevents blockages by avoiding trapped waste on the diverting blade.

Impressed by Paramount's performance, the customer entrusted us with a major upgrade to eliminate recurring blockages, expanding the system for new machines, and carrying out substantial service work and modifications. Paramount conducted a detailed survey, modelled the waste system using our bespoke software, and planned improvements with minimal production disruption.



System upgrades included replacing and extending ducting, adjusting diameters to optimise waste flow velocities, and installing Paramount Shoe diverters throughout. This allowed for waste segregation, enhancing returns on waste and assisting customer's sustainability targets.

Post-upgrade, the customer experiences less than one blockage per month, allowing for an investigative procedure with most now being attributed to operator error rather than system design. This work, carried out for a multi-site, multi-country producer, has not only resolved long-standing issues but also strengthened Paramount's relationship within the customer's Group through the installation of proven, tested solutions and Engineering expertise.

T +44 (0)127 669 1463
<https://paramountwaste.co.uk>



WASTE EXTRACTION SYSTEMS FOR ALL TYPES OF DRY WASTE, DUST AND FUMES



With 25 years experience, Paramount Waste Extraction Ltd. specialises in designing, installing, and upgrading waste extraction systems tailored for a wide range of industrial, process and manufacturing sectors, including carton manufacturing, printing, packaging, foil and film production.

With a focus on efficiency and sustainability, Paramount Waste offers custom solutions to optimise waste handling, reduce production downtime, and enhance operational productivity with automated systems. Our services range from complete turnkey installations to system assessment, modifications and upgrades.

A complete range of proven designs including Chopper Fans, Separators and Filtration equipment combine with many years experience to create efficient and effective designs that work.

Paramount Waste collaborates closely with clients to ensure each project is completed within budget while delivering lasting improvements. Known for our expertise and commitment to quality, we provide dependable solutions to meet all types of modern industrial waste handling challenges.

Contact us on;

+44(0)127 669 1463

enquiries@paramountwaste.co.uk

WWW.PARAMOUNTWASTE.CO.UK



Elite event crewing services

Olympus Crew offers a comprehensive range of event crewing services, distinguished by its highly trained and versatile team. With expertise spanning from tools and staging to AV and lighting, the crew is prepared to handle a range of diverse tasks efficiently.

Founded in 2018, Olympus Crew has rapidly established itself as a versatile and reliable partner in the event industry. Over the past six years, they have successfully managed a wide array of events, including festivals, corporate gatherings, live shows, and sporting events. With seasoned

crew chiefs at the helm, Olympus Crew ensures smooth operations, effective client communication, and proficient management of large on-site teams. Its dedication to excellence makes them a standout choice for event execution.

Olympus Crew have the ability to travel all over the UK and even overseas when required. The team is made up of diverse skillsets including carpentry, audio visual, physical and mental strength, as well as forklift and IPAF operators.

The crew will be with you from the start to the end of each project. Whether that be picking items from a warehouse, building and painting sets in a workshop or loading



and unloading trucks, Olympus Crew offer as much off-site as they do on.

If you're looking for an elite crew that is professional in its execution with a hardworking attitude, get in touch today and a member of the team will be in touch within 48 hours.

M 07904 903452
info@olympuscrew.co.uk
www.olympuscrew.co.uk



Event Crew in Leeds & in London, UK

We are a crewing company, for the clients, and for the crew.
We ensure the best services for you

Olympus Crew set up in early 2018 has developed into offering event solutions with crew, technicians and carpenters nationwide. Staffing jobs and events predominantly in the north of the UK, Olympus Crew has now spread across the UK and the globe working on some of the worlds most prestigious events.

Event team Leeds and London

Whether it's a big or small event, International or Local, Olympus Crew have you covered. With crew operational in Leeds and London, with the ability to travel far and wide, we are a convenient and proficient option for you to use for your crewing needs. As well as the UK, we've sent crew to Europe, Asia, Australia, North and South America, so wherever we're needed we'll be there for you.

Here at Olympus Crew, we have a dedicated team of hardworking professionals who form the Olympus Crew family. To date, we have over 80 crew members which increases daily.

Please visit **www.olympuscrew.co.uk**
Contact **079 049 03452** or email **info@olympuscrew.co.uk**



Le Tonkinois Varnish & Flexidisc Sander: Trusted tools for lasting finishes

B & D Murkin is the main UK importer for Le Tonkinois Varnish and the Flexidisc sander. Established in 1992 by three brothers Derek, Brian and Roy Murkin, the company is based in Maidenhead and imports a range of products that are used by professionals and amateurs to produce fantastic finishes. Its main products have been demonstrated and sold at numerous shows throughout the UK for over 30 years and have proven reliable and resilient over this time.

Le Tonkinois Varnish is an environmentally friendly natural oil-based yacht varnish, that uses a Chinese formula dating back two or three centuries. Designed to remove brush-marks, bring out the natural beauty of the timber without cracking or flaking off, this permanent varnish is simple to use and only requires an additional coat every few years. Proven as the perfect solution for the amateur user seeking a professional product, Le Tonkinois Varnish comes available in three separate forms.



Le Tonkinois Classic is a high-quality finish known for its exceptional penetration, even on oily timbers, creating a strong and lasting bond without leaving brush marks. It forms a tough, non-porous, and weatherproof coating that is highly resistant to UV rays, sea water, and other harsh elements. Free from harmful or irritating ingredients, it is ideal for indoor use but also surpasses many competitors in outdoor applications. Ecologically friendly and free of petroleum solvents, it can be applied over most existing finishes (excluding wax), and enhances the natural beauty and colour of bare wood. Especially suited for boats and garden furniture, it remains flexible and will not crack, chip, or peel. Its natural, brilliant gloss can also be adjusted to a matte finish if desired.

Le Tonkinois Marine No. 1 is a further refined version of the Classic, offering enhanced purity and superior performance. It dries faster, penetrates wood more effectively, and is easy to apply. With improved UV protection and greater resistance to abrasion, it provides a more durable and long-lasting finish. Marine No. 1 also delivers a higher gloss compared to the Classic and is less prone to skinning in the can, making it an excellent choice for demanding marine and outdoor applications.

Le Tonkinois Parquet is ideal for flooring and employs a strong synthetic Alkyd resin and Ester oil to return a harder-wearing surface for foot traffic. The finish is a little less glossy than the other two, just slightly opaque. Furthermore, all three can be matted or semi-matted by including Gelomat in the final coat.

Le Tonkinois is also brilliant for use on boats in fresh water sea or sludge. Le Tonkinois is brilliant for all materials. Because it stays flexible, it moves with the

timber, so it is even suitable for use on Oak or Cork without cracking. Other areas of use include outdoor and interior woodwork as well as kitchens because it is fully waterproof, cannot be marked by hot cups or plates, isn't affected by water or alcohol, and is classified safe to use in food areas.

Another notable product is the Flexidisc Sander/Grinder that gives a superb finish on wood, metal, fibreglass, car body fillers and all other hard materials. The Flexidisc Basic pack includes a Flexidisc sander, steel locking nut, abrasive discs, and cleaning rubber. In its basic state it's a general sander, however its capabilities are varied meaning it converts in seconds to be used as a super-fine finishing sander, a bench grinder, a general-purpose sharpener, a partial angle grinder, a polish applicator/polisher, as well as a grinder for glass and nails.

The Flexidisc Sander/Grinder is a 5" (125mm) disc sander attachment that fits into any drill. Its flexible, vibration-free shaft provides full control without skidding or scuffing, ensuring smooth results with minimal effort. It uses reusable, velcro-backed discs coated with ultra-hard Corundum – each lasting as long as 100 standard discs. These discs handle everything from soft plaster to steel, and can polish rough timber faster than conventional sanders, all while generating minimal heat, making it safe for materials like GRP and old paint.

If you're would like to learn more about these products, or any further services, please see below:
T 01628 548840/01628 629892
bmurkin@sky.com
www.letonkinoisvarnish.uk

LE TONKINOIS VARNISH

LE TONKINOIS VARNISH IS A NATURAL OIL BASED YACHT VARNISH, USING A CHINESE FORMULA DATING BACK TWO OR THREE CENTURIES AND WHAT A FORMULA!

IT REMOVES YOUR BRUSH-MARKS, BRINGS OUT THE NATURAL BEAUTY OF THE TIMBER, DOESN'T CRACK OR FLAKE OFF, AND IS PERMANENT, SIMPLY ADD A FURTHER COAT EVERY FEW YEARS.

LE TONKINOIS CLASSIC IS THE ORIGINAL CHINESE RECIPE, WHICH HAS PROVED TO BE A FIRST CLASS RESILIENT AND RELIABLE VARNISH FOR MORE THAN A CENTURY. TRADITIONALLY USED BY THE FRENCH NAVY FOR ALL THEIR SAILING VESSELS, AND WIDELY USED BY TRADITIONAL CRAFTSMEN FOR YEARS. IT TENDS TO GIVE A THICKER COAT THAN MARINE NO 1.

Please visit **www.letonkinoisvarnish.co.uk**
 Telephone **01628 629892** or email **mail@letonkinoisvarnish.uk**



One-stop-shop for indoor and outdoor sports and leisure spaces

The UK has seen an explosion in indoor recreational spaces, from trampoline parks, Ninja Warrior courses to soft play centres.

The first indoor Trampoline Parks opened in 2014 and over the last ten years, over 150 parks have opened. From corporate days out, to children's parties and clubs, trampoline parks are a growing industry.

Ninja Warrior Courses have likewise sprung up in major cities across the country, all inspired by the ITV hit programme Ninja Warrior UK. From Leicester to Liverpool, children and teenagers of all ages put their Ninja skills to the test in a series of physical obstacle courses.

Soft Play Centres hardly need an introduction, as most aunts, grandparents, and parents will have taken their child or younger relative to one at some point. Come rain or shine, all year round, soft play centres provide hours of safe, sociable fun for babies,

toddlers and children. Designed for children to let off steam, the integrated slides, ball pits and play areas are perfect for weekly meet ups and children's parties.

For companies looking to increase franchises and open new centres, it's always good to use manufacturers renowned for professionalism, expertise and excellent customer service. The Playcraft Group fits the bill with 40 years' children's play industry and 25 years' play centre attraction industry experience. Based in South Wales, the company offers a one-stop-shop for design, manufacturing, installing and maintaining trampoline parks, climbing walls, Ninja Warrior courses, adventure playgrounds and much more.

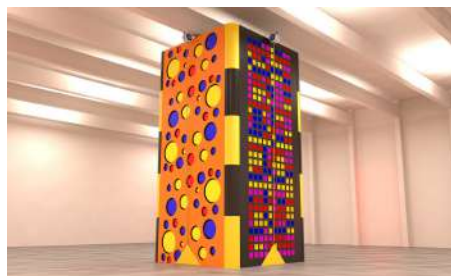
"We offer bespoke installations across the indoor and outdoor sports and leisure sector, as one of the few one-stop-shops in the industry. Our previous high-profile clients have included Disney, Land Rover and Cartoon Network and we work with farm parks, theme and holiday parks, schools, the FEC sector and more. We know the business inside out and we're happy to offer free 360° advice from business plans and models, to planning application support, insurance to franchising advice. From Jungle or Space themed soft play, climbing wall in a new upcoming urban space, to an exciting Ninja Warrior Course, we can do it all.

Currently we are working on a wheelchair-friendly, soft play section for a local soft play centre. We are adapting our soft play materials to incorporate the width of an electric or manual wheelchair. The end result will be an inclusive space for children in



wheelchairs. More and more soft play centres are adding sensory spaces (lights, textures etc) to support neurodiverse children, to increase inclusivity for children and their families," explains Mike Broadfield: founder, coach and consultant.

To start your indoor leisure franchise journey today, contact Mike on the details below:
T +44 (0)1792 422818
hello@playcraftgroup.com
<https://softplay-manufacturer.com>



CHOOSE US FOR 'DIRECT' SUPPLIES

Multiple Facilities

- Trampoline Parks
- Soft Play Areas
- Climbing Walls
- Ninja Warrior Courses
- Adventure Playgrounds

All In-House

One of the only companies who:

Design
Manufacture
Install
Finance

FREE 360° ADVICE

We help ensure your success with:

Business Plan & Model
Planning Application
Success
Financials & Insurances
Franchising

Find out more at softplay-manufacturer.com

Tel +44 (0)1792 422818 | hello@playcraftgroup.com



IAS: Success at APF 2024 and exclusive new Socage product

Independent Access Sales (IAS) sell market-leading manufactured platforms, such as Easylift Spider Platforms, SOCAGE Truck Mounting Platforms.

Based in Huntingdon, IAS has gone from a relative newcomer on the market to selling million-marked machines over the last two years. One the main reasons for the company's success is the focus on solid customer service. Founder Richard Martin has 35 years' previous sector experience across scaffolding, supervisory roles and surveying and understands the industry inside out.

With a focus on brand awareness, IAS brought its Easylift Spider Platforms and SOCAGE truck-mounted platforms to the APF Show from the 19th-21st September at Ragley Estate, Warwickshire. APF has been running since 1976 and is a respected dedicated biannual event for the whole forestry, woodland, arboriculture, firewood,



fencing, tree and timber sectors. It's the largest of its kind and attracted 23,000 visitors this year.

"APF 2024 was a huge success for us. We met lots of knowledgeable end-users, with a huge appetite for the latest machinery. As a biannual event, it had an extra buzz, with lots of strategic talk. We had lots of hot enquiries and sold a SOCAGE 24D double-articulated truck platform during the three-day event. This product has been precision-designed with safety in mind, with automatic stabilisation as standard. It can reach a working height of 23.60M and a lateral reach of 12.70M with a maximum load of 300kg: perfect for all tree surgery jobs. The SOCAGE 24D is set up to approach heights without risk of collision and with improved precision, which is ideal for manoeuvres like tree pruning," added Richard.

The Easylift Spider Platforms are also ideal for tree surgeons: with the range available from 13M up to 53M. The Easylift platforms give the owner

operator assurance and flexibility in business: simply put – more control over what to do in different environments. For tree surgeons, this allows operators the advantage of closing the Easylift Spider Platform down to less than 1M working width to take down a narrow footpath in a forest, to setting up on a hill to work at great height.

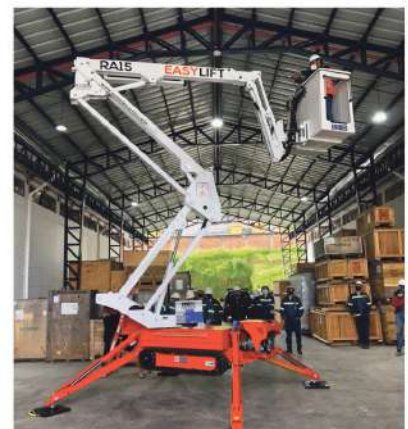
"We are delighted to report that from early next year, we will be supplying the SOCAGE 75M – which will be the largest SOCAGE access platform in the UK: a market-first. Contact us now for further information!"

For more information or to speak to Richard Martin directly, please see the details below:
M 07483 246878
enquiries@iasales.co.uk
www.iasales.co.uk



SUPPLY AND
SERVICE SPIDER
PLATFORMS AND
TRUCK MOUNTED
PLATFORMS AND
WILL HAVE THE
PERFECT ACCESS
SOLUTION FOR YOUR
BUSINESS.

**FIND YOUR
PERFECT
PLATFORM**



**INDEPENDENT
ACCESS SALES**

GET IN TOUCH TODAY OR VISIT OUR WEBSITE TO VIEW OUR RANGE.
T. 07483 246878 | E. ENQUIRIES@IASALES.CO.UK | W. WWW.IASALES.CO.UK



Recycled plastic educational furniture maintenance-free outdoor classroom products

Using Recycled Plastic Wood and Recycled Mixed Plastic Lumber collected from UK Homes and Businesses – Eco friendly and Sustainable

Recycled plastic lumber or recycled plastic wood, is made from taking your waste plastic and processing it for reuse. 66% less energy is needed than is required in production of virgin plastic, and it releases a whopping 250% less carbon dioxide.

We turn this recycled plastic into aesthetically pleasing, useful products, for the general public, construction companies, local authorities, educational institutions and hospitals all over the world.

All our products are recycled as well as being recyclable.

This is the ideal of recycling. It's a closed loop.

All the plastic products we use as consumers should be capable of recycling indefinitely making for a sustainable future for our children and a cleaner less toxic environment.

In some cases we also reuse rather than recycle.

For example, we have a **Recycled Plastic Compost Tumbler/Compost Bin** – appropriately named, **'The Compost Creator.'** For this we reuse a food grade plastic drum previously used to transport food products.

Reuse is vastly superior to simply recycling

There is no significant consumption of energy, as there is no manufacturing process involving heavy use of



energy. We just drill a few holes in the drum and clean it up as best we can.

Both recycling plastic as well as reusing it keeps large amounts of plastic waste out of expensive and now difficult to find landfill.

This results in a lower carbon footprint and reduced human contribution to global warming and climate change.

Recycled Mixed Plastic Lumber, recycled HDPE and recycled polystyrene (which is the primary waste plastic in our recycled plastic wood or recycled plastic timber) are what we make all our products out of.

These, often brightly coloured, Recycled plastic products are extremely durable and attractive.

They will maintain their appearance for many years to come.

Our highly acclaimed **Compost Tumbler, or**

Compost Bin, Raised Beds, Garden Planters, 2 and 3 Seater Garden Benches, Sports Benches, Play Dens, and other Outdoor Classroom products are not flimsy and light, but robust and solid enough not to blow away in a gale.

If you would like to pay us a visit you will be very welcome.

Our manufacturing unit is in Burnley, Lancashire. We deliver nationwide, but you may be nearby and can pop in to see us. Best to call 01282 861325 first though.

We're close enough for a visit

if you are in Nelson, Foulridge, Lane Bottom, Colne, Bradford, Clitheroe, Accrington, Blackburn, Keighley, Newchurch, Preston, Rochdale, Huddersfield, Shipley, Dewsbury, Castleford, Harrogate, Wakefield, Darwen, Leyland, Halifax, Bacup, Hebden Bridge, Barnoldswick, and West Yorkshire. Manchester or Bolton are a stone's throw away. Come and see our showroom and view these elegant recycled plastic products close up.

Our plastic wood will amaze you. This recycled plastic looks and feels like genuine wood but is superior in design and quality to traditional wood lumber or timber products.

See Eco-Table and Bench Outdoor Furniture Set: <https://www.youtube.com/watch?v=aAdixalBHYS>

Please visit: www.kedeleducation.co.uk

The Zero Maintenance Alternative to Wood



Recycled Plastic

- 100% recycled and recyclable
- Impervious to fungi, algae, insects
- Never rots, splinters or cracks
- Graffiti resistant
- UV Protected
- Eco-friendly and low carbon
- 100% maintenance free
- Lasts a lifetime



Please contact us on 01282 861325
sales@kedel.co.uk | www.kedel.co.uk



Building better energy efficiency into high performance facades

Mark Halliday, Head of Technical at ARBO®, part of CARLISLE® Construction Materials, discusses a fabric first approach to façade specification as part of improved building performance

Buildings account for 40% of global carbon emissions; a figure set to double by 2050. A performance-led approach to design and building fabric specification are part of the solution.

Fire safety and performance

Changes to the Building Safety Act (BSA) now require whole project teams to prioritise functionality, buildability, and sustainability.

CARLISLE® prioritised those principles when developing the ARBOSHIELD Pro® Fire-Resistant Façade System – a group of products with Class A or B reaction to fire, and W1 resistance to water penetration.

Correctly specifying and installing products is essential to ensure performance. That's why the ARBOSHIELD Pro® range has been developed for ease of installation and buildability, with technical and on site support for specifiers and installers.

Performance in detail

Poor performance or installation at structural openings can compromise the airtightness, watertightness and fire safety of the whole façade. Rigorously-tested and compliant systems, that combine performance with ease of installation, are essential.

The ARBOSHIELD Pro® External Perimeter Class A Membrane (EPAM) ensures a neat, fire safe, compliant, and trusted installation on all structural openings.



Creating a watertight and airtight seal with certified fire resistance, the ARBOSHIELD Pro® EPAM connects a concrete structural frame or steel frame to SFS sections and exceeds the current Building Regulation and Approved Document B requirements for a fire and weathertight seal that bonds even in -40°C temperatures, futureproofing the project.



ARBO offers a range of sealing solutions, including pasted EPDM, butyl-backed Easy-Stick, Class B FR-RS fire tape, and EPAM. These options cater to diverse EPDM and façade opening sealing and interface requirements based on project criteria.

Sealing for success

Sealants are the unsung hero of façade specification, protecting a building's structure and aesthetics by preventing water damage and thermal bridging.

ARBO's sealants, in various colours, are ideal for applications including perimeter pointing, cladding panels and glass-to-glass joints. Where fire safety is essential, the ARBO range of intumescent and fire-resistant mastics and sealants can deliver safety, waterproofing and airtightness performance for expansion joints, glazing, windows and doors, and brick and blockwork.

The benefits of simplification

Selecting products designed to work together, developed for ease of installation, and proven to deliver performance can make a substantial difference to the safety, thermal efficiency, and longevity of the façade.

Please visit:
www.arbo.co.uk



Accountability

The Building Safety Act has been updated.
Do you know your new responsibilities?

ARBOSHIELD® PRO

Class A Fire-Resistant Façade System

Revisions to the Building Safety Act mean we are now all more accountable when specifying fire safe products within buildings. Fire management can be complex, so we've removed all uncertainty by introducing new products that meet and exceed the standards. By providing you access to our industry experts, and technical professionals, ARBO is your assurance of protection and peace of mind.

For sales and distribution enquiries please call: +44 1773 826 661

YOUR ACCOUNTABILITY BEGINS WITH ARBO

www.arbo.co.uk



Free samples

ARBO®

Hinges




GOLD & WASSALL
EST. 1790

Gold & Wassall have been manufacturing hinges for over two centuries, so it's safe to say we know what we're doing.

Our team of experts can design and manufacture almost any hinge, for any application.

T 01827 63391
sales@goldwassallhinges.co.uk
www.goldwassallhinges.co.uk

Project Management Software




elevate™
Construction Made Easy

Elevate software can provide real-time updates, directing everyone on actions and this results in the team, prioritising their time and becoming more productive.

www.elevate-software.co.uk

Interior & Exterior Furniture




BESPOKE CRETE

BespokeCrete creates custom and bespoke furniture, outdoor kitchens, kitchen worktops, waterfall islands, patio sets, indoor table & bench sets, coffee tables, baths, sinks and so much more – that is fully waterproof, heat, stain and scratch resistant.

T 0800 061 4157
info@bespokecrete.com
www.bespokecrete.com

Deep Hole Drilling




UNISIG
DEEP HOLE DRILLING SYSTEMS

Our industry-leading customers around the world rely on UNISIG® deep hole drilling technologies for powerful, productive solutions and value. We engineer our machines to handle a complete range of applications, and support them with our high level of expertise and service.

www.unisig.com

Safety Consultancy




DCON
SAFETY CONSULTANTS

DCON Safety Consultants is committed to understanding the specific needs, goals, and desires of each individual client and project.

T +353 (0)1 611 1556
info@dconsafety.com
dconsafety.com

Sign Plaques & Architectural Castings




LEANDER
ARCHITECTURAL

Manufacturers and designers of high quality fingerpost signs, bandstands, bespoke canopies, Porte-cochère, blue plaques, noticeboards, cast signage, memorial plaques, street furniture, gazebos and much more.

T 01298 814941
www.leanderuk.com

Portable Buildings




ModConCabins
Manufacturer of Modular, Containers & Cabins

ModCon Cabins provides modern, affordable and bespoke modular and portable buildings for a multitude of situations, each one carefully crafted from new and used shipping containers.

T 0333 404 8822
modconcabins.co.uk

Eco-Friendly Plastic Products




KEDEL
ECO-FRIENDLY PLASTIC PRODUCTS
TRADE

Kedel Limited is a family business, founded on ethical and ecologically sound principles.

We created our business to showcase the very best recycled plastic products, putting green, sustainable living at the heart of all our company decisions.

T 01282 861325
www.kedel.co.uk

Compliance Solutions



CheckedSafe was developed to provide simple and inexpensive compliance solutions that could be tailored to any industry.

T 01282 908429
info@checkedsafe.com
www.checkedsafe.com

Timber



The Company was founded in 1883 by Louis Vandecasteele. In those days, wagon making was the main commercial activity. Desiré Vandecasteele, son of the founder, then added a small sawmill.

Contact
T +32 56 43 33 00
vandecasteele.be/en

Machinery



With 35 years of experience in the access industry, we will find the platform most suited for your needs and supply at the best price achievable.

Independent Access Sales offer a complete service management facility throughout the UK.

T 07483 246878
enquiries@iasales.co.uk
iasales.co.uk



Landscaping Machinery



Eco Clipper offers large electric-powered mowers that help field managers minimise mowing costs for sports fields. Users report high productivity gains and appreciate low maintenance requirements, quiet operation and the ability to schedule mowing even under less favourable mowing conditions, such as early morning dew and wet autumn.

T +31 (0)6 46 75 35 60
www.ecoclipper.com



Engineering & Consultancy



Bartels & Vedder is an engineering firm, specialised in floating and flood proof buildings and structures.

T +31 (0)6 422 398 53
www.bartelsvedder.nl

Waterproofing



TuffStuff® is the UK's premium designer, manufacturer and supplier of heavy-duty GRP waterproof flat roofing systems.

T 01977 680250
orders@tuffwaterproofing.co.uk
www.tuffstuff.co.uk

Fixings



Our Award Winning Solutions are one of the most cost-effective solutions to enable the fitting of external furniture through external wall insulation and rain screen cladding, with the added benefit of being designed specifically for the job.

T 01884 211540
info@swifix.co.uk
www.swifix.co.uk



Storage



Wallbed Systems offers a large range of wallbed hardware designs. We produce many different styles of wallbeds and ship all over the world.

Contact Jeremy Waller,
T +44 (0)208 704 5796
jeremy.waller@
wallbedsystems.co.uk
www.wallbedsystems.co.uk



Simple and inexpensive compliance solutions tailored to any industry.

CheckedSafe provide compliance services across commercial & plant hire businesses, utilities companies, and many other service sectors that are monitored for compliance.

Vehicle Compliance

The vehicle compliance system for all fleets with paperless defect reporting and office portal.

- ✓ Driver's app
- ✓ GPS tags
- ✓ Back-office portal
- ✓ DVSA compliant

Licence Checks Service

Conduct licence checks remotely ensuring your drivers have the correct credentials.

- ✓ Simple to use
- ✓ Pay as you go
- ✓ Remote use
- ✓ OCR technology

GB Domestic Hours

Demonstrate your GB domestic hours compliance whenever needed.

- ✓ Ensure legal compliance
- ✓ Manager driver fatigue
- ✓ Improve productivity
- ✓ Real-time alerts

Lone Worker

The smart way to protect lone workers with visibility of all your team members in the hub.

- ✓ SOS red alerts
- ✓ Welfare checks
- ✓ Worker down alerts
- ✓ Group notifications

Dynamic Risk Assessment

Identify hazards, assess risk, take action, and review reports, on-site, and in real-time.

- ✓ Simple to use
- ✓ Pay-as-you-go
- ✓ Remote use enables
- ✓ OCR technology

Try free for 30 days
Visit checkedsafe.com

