

BUILDING UPDATE

ISSUE: 682 January | www.solutionspublishing.co.uk



Pandor

BESPOKE DOOR AND PANEL MANUFACTURERS

FIRE DOORS | ACOUSTIC DOORS | PANELLING | DOOR FRAMES

THREE KEY VALUES

SUPERLATIVE QUALITY | SHORTEST DELIVERY | ATTENTION TO DETAIL

OFFERING SERVICE LIKE NO OTHER

EXCELLING IN ACHIEVING FAST LEAD TIMES FOR BESPOKE FIRE DOOR SETS

QUALITY AND SERVICE WITH A SMILE

PROUD MEMBERS OF THE BM TRADA Q-MARK SCHEME FOR FIRE DOORS YOU CAN DEPEND ON

UNIT F2/F3 | LONDON ROAD TRADING ESTATE
SITTINGBOURNE | KENT | ME10 1SX

CALL: 0208 279 7611 | 07909 530 007

EMAIL: MIKE@PANDOR.LTD | PANDORLTD@HOTMAIL.COM



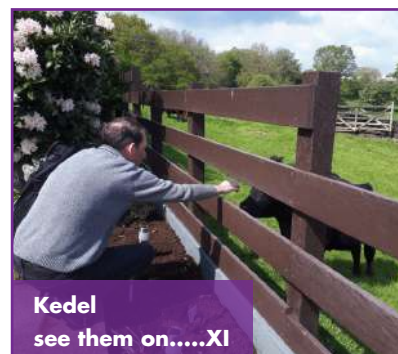
Independent Access Sales
see them on.....V



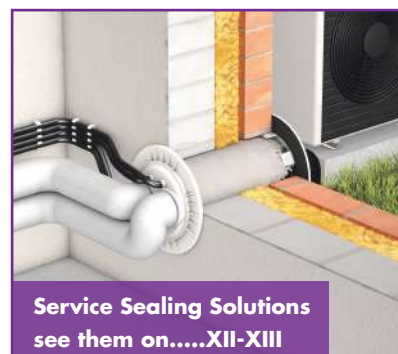
LS Products (Ecoclipper)
see them on.....VIII



Checkedsafe
see them on.....IX-X



Kedel
see them on.....XI



Service Sealing Solutions
see them on.....XII-XIII



Event Crew in Leeds & in London, UK

We are a crewing company, for the clients, and for the crew. We ensure the best services for you

Olympus Crew set up in early 2018 has developed into offering event solutions with crew, technicians and carpenters nationwide. Staffing jobs and events predominantly in the north of the UK, Olympus Crew has now spread across the UK and the globe working on some of the worlds most prestigious events.

Event team Leeds and London

Whether it's a big or small event, International or Local, Olympus Crew have you covered. With crew operational in Leeds and London, with the ability to travel far and wide, we are a convenient and proficient option for you to use for your crewing needs. As well as the UK, we've sent crew to Europe, Asia, Australia, North and South America, so wherever we're needed we'll be there for you.

Here at Olympus Crew, we have a dedicated team of hardworking professionals who form the Olympus Crew family. To date, we have over 80 crew members which increases daily.

Please visit www.olympuscrew.co.uk

Contact **079 049 03452** or email info@olympuscrew.co.uk



www.facebook.com/solutionsuknews



@Publishing_2016

Make your project possible

DCON Safety Consultants Limited offers leading health and safety consultancy and construction statute advice services. The company prioritises and specialises in the highest levels of informed and intelligent advice, senior project resource allocation and compliance assurance. Informed by industry expertise, DCON Safety Consultants Limited knows that every project has potential risks, no matter what its potential benefits, so its team of highly experienced construction professionals helps to ensure clients' statutory conformity.

Upon gaining understanding of the specific needs, goals and desires of each client and their project, DCON Safety Consultants Limited is dedicated to implementing a design and construction management plan that will meet or exceed these requirements. And, DCON Safety Consultants Limited ensures that there is honesty, integrity, trust and professionalism underpinning every project.

Moreover, the company's services are centred on three delivery principles:

- **Maximising Quality:** The company implements proven health, safety and wellbeing strategies to help clients achieve high quality and cost-effective work commensurate with the design of their projects.
- **Minimising Risk:** The company effectively manages design and delivery risk on projects to match each client's desired risk level profile.
- **Managing Compliance:** The company relies on its extensive background working on a wide variety of projects to assist clients in developing, monitoring and maintaining compliance performance.

This excellent service would not be possible without the leadership of Diarmuid Condon, a construction industry leader who brings unique perspectives to encourage, support and mentor the abilities of his colleagues. As a construction professional with a surveying background and experience spanning two decades, Diarmuid is emblematic of DCON Safety Consultants Limited's commitment to providing outstanding services to clients.

Diarmuid has contributed his invaluable expertise to over 400 projects over 20 years, with a client list including public sector departments, corporate owners, real estate developers, main contractors, design professionals and infrastructural bodies. With this incredible portfolio, Diarmuid is helping DCON Safety Consultants Limited to become a leader in health and safety consultancy across the construction industry.

Key to DCON Safety Consultants Limited's services is working as a Project Supervisor for the Design Process and CDM Advisor in various



sectors across the Irish construction market. No project is too simple or too complex for the company's construction safety consultants, all of whom are construction professionals with an average of 20 years' experience in the built environment. The ability to maximise this knowledge and skillset means DCON Safety Consultants Limited can generate distinctive and innovative ideas from traditional PSDP service inputs and outputs.

DCON Safety Consultants Limited also provides its main contractor clients with intelligent, practical, and reasonable physical site safety advice to support compliance and good practice adherence. Behavioural safety outcomes inform how the company approaches each solution with the contractor and their supply chain, identifying opportunities for improvement.

To complement this, DCON Safety Consultants Limited can also help with clients' health and safety strategy. Its holistic and integrated approach can help unlock substantial benefits for clients by providing a structured, objective and SMART framework for full optimisation through the

creation of an environment that embraces health, safety and wellbeing.

This means DCON Safety Consultants Limited helps clients to improve their health, safety and environmental performance; enhance staff satisfaction thanks to improved performance; improve risk management and corporate governance with a clear audit trail; gain confidence from long-term planning, better sustainability and performance; and improve overall corporate reputation, including greater staff satisfaction and a more efficient procurement and supply chain.

If you are interested in finding out more information on DCON Safety Consultants Limited's full range of excellent services, head to the website or get in touch directly using the contact details below.

T +353 (0)1 611 1556
diarmuid.condon@dconsafety.com
www.dconsafety.com





Leaders in Built Environmental Safety and Health and Wellbeing Consultancy



Consulting on various aspects of project design, constructability and operational lifecycle matters for local and global commercial clients.

DCON Safety Consultants is committed to understanding the specific needs, goals, and desires of each individual client and project. Upon gaining this special understanding, we commit ourselves to the implementation of a design and construction management plan that will meet or exceed these requirements. Our foundation for each project is honesty, integrity, trust, and professionalism.



OUR SERVICES

- DESIGN SUPERVISOR
- PLANNING COMPLIANCE
- CONSTRUCTION HEALTH & SAFETY
- HEALTH & SAFETY STRATEGY
- EXPERT WITNESS

Please visit: www.dconsafety.com

Email info@dconsafety.com • Phone +353 (0)1 611 1556

DCON Safety Consultants, Suite 5, Fitzwilliam Square East, Dublin 2

SWIFIX: Leading products to enable fixing through EWI



Protecting Your Investment

Multi-award winner SWIFIX is synonymous with excellence and innovation and since inception in 2016 has seen astonishing year-on-year growth. With growth expected to more than double this year, Founder and Director Paul Brown has taken on a new company depot to expand the fulfilment side of the business.

The key milestones in the company's history include partnering with CityFibre to roll out UK-wide broadband with leading installation products such as fibre broadband cables, catenary wires and utility boxes. A further collaboration with Exeter College as consultant on curriculum saw the design and delivery of retrofit boot-camps and upskilling courses for the insulation sector.

Paul began his career as a plasterer working on the restoration of ornamental plasterwork before moving into the EWI sector over two decades ago and working with a company that is now a FTSE 250 listed company. Gaining working knowledge across the sector, Paul worked in a number of directorships delivering EWI, Decent Homes maintenance, gas and electrical and renewable services.

With expert knowledge of the EWI sector at large, specifically within the housing sector, Paul saw a niche market and started designing and producing a range of fittings, dedicated to refitting and installing lightweight and heavyweight items through EWI systems. These innovative fixings have been approved and specified by many EWI system designs and clients across the UK and can be used during or after system installation.

"This work progressed further as a key member of GCAP (Green Construction Advisory Panel): a group of individuals set up in the South West from across industry; including installers, suppliers, landlords and merchants. The mission of GCAP is to bring sustainable training and education opportunities to the housing and construction sectors." explains Paul.

With the legislative passing of PAS 2030 in 2017 and PAS 2035 in 2019, the industry has moved away from the more traditional usage of timber pattresses, which are now seen as poor practice by many experts including the Chief Construction Adviser (CCA) Peter Hansford. The traditional method of fixing items, such as satellite dishes, fence/gate posts, external pipe work, lights/alarms, canopies, utility boxes, through to washing lines and hanging baskets had been through timber pattresses, spreading the load over a larger area of surface wall. This however contributed to cold spots, thermal bridging and even impacted on insulation qualities, alongside the natural wear and tear of the timber itself.

The SWIFIX range is PAS 2035-compliant for retrofitting, modular housing sector and future-



proofed for maintenance provision, meeting stringent requirements to mitigate against insulation compression, with its industry-leading watertight seal. The products include single universal fittings, satellite fitting kits, pipe connectors, connection point fittings, and tap fittings. The multi-award-winning SWIFIX external wall fixings are available via wholesale merchants and come highly recommended by the UK's leading systems manufacturers as 'Products of Choice.'

The SWIFIX range includes the following:

- **SWIFIX single universal fitting:** Secures, downpipes, vent pipes, canopies, lights, alarms, and more
- **SWIFIX satellite fitting kit:** Designed for refitting a standardised satellite dish through EWI.
- **SWIFIX Pipe connector:** Securing small to large pipes and cables, giving a robust, watertight seal.
- **SWIFIX connection point fitting:** Ideal for attaching cables, hanging baskets, trellis utility cables and washing lines.
- **SWIFIX tap fitting:** Fits an external tap through EWI, ensuring a watertight seal.
- **Introducing new additions to the SWIFIX family:** A range designed for fixture to render for small lightweight cables, through to thermally effective solutions for air source heat pumps and air conditioning currently being developed.

"We're proud to be recognised for this Production Innovation Award – our Devon-based company has

grown exponentially since 2016 and we are now supplying products throughout the UK and Europe. We've established long-term relationships in Greece, Poland and Germany and are hoping to expand further across the continent in the near future. Business is flourishing due to the unique nature of our products on the market."

"We routinely work with Architects, Local Authorities (LA's) to major contractors and system designers providing innovative, industrial solutions for securing external wall furniture, through insulation and cladding, across a range of properties, including retrofit, new build, and the off-site modular sectors."

"With the current accelerated focus on the circular economy and meeting the UK Government's 2050 net-zero targets, we are proud to report that the SWIFIX fixing range is made from partially-recycled plastics, with all parts and packaging fully recyclable, reducing the need for landfill. For any EWI Systems Designers looking for sustainable product options, this is an area that we are delighted to be endorsing."

For more information or to talk to Paul Brown, please see details below:
T 01884 211540
info@swifix.co.uk
<https://www.swifix.co.uk>



IAS: Success at APF 2024 and exclusive new Socage product

Independent Access Sales (IAS) sell market-leading manufactured platforms, such as Easylift Spider Platforms, SOCACHE Truck Mounting Platforms.

Based in Huntingdon, IAS has gone from a relative newcomer on the market to selling million-marked machines over the last two years. One of the main reasons for the company's success is the focus on solid customer service. Founder Richard Martin has 35 years' previous sector experience across scaffolding, supervisory roles and surveying and understands the industry inside out.

With a focus on brand awareness, IAS brought its Easylift Spider Platforms and SOCACHE truck-mounted platforms to the APF Show from the 19th-21st September at Ragley Estate, Warwickshire. APF has been running since 1976 and is a respected dedicated biannual event for the whole forestry, woodland, arboriculture, firewood,



fencing, tree and timber sectors. It's the largest of its kind and attracted 23,000 visitors this year.

"APF 2024 was a huge success for us. We met lots of knowledgeable end-users, with a huge appetite for the latest machinery. As a biannual event, it had an extra buzz, with lots of strategic talk. We had lots of hot enquiries and sold a SOCACHE 24D double-articulated truck platform during the three-day event. This product has been precision-designed with safety in mind, with automatic stabilisation as standard. It can reach a working height of 23.60M and a lateral reach of 12.70M with a maximum load of 300kg: perfect for all tree surgery jobs. The SOCACHE 24D is set up to approach heights without risk of collision and with improved precision, which is ideal for manoeuvres like tree pruning." added Richard.

The Easylift Spider Platforms are also ideal for tree surgeons: with the range available from 13M up to 53M. The Easylift platforms give the owner

operator assurance and flexibility in business: simply put – more control over what to do in different environments. For tree surgeons, this allows operators the advantage of closing the Easylift Spider Platform down to less than 1M working width to take down a narrow footpath in a forest, to setting up on a hill to work at great height.

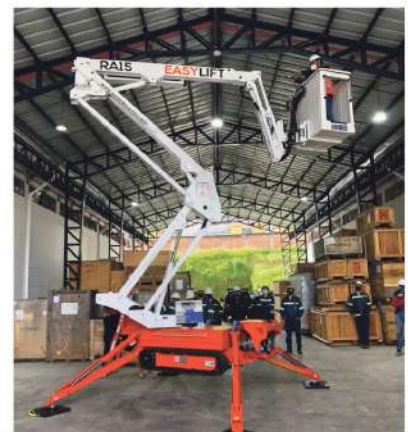
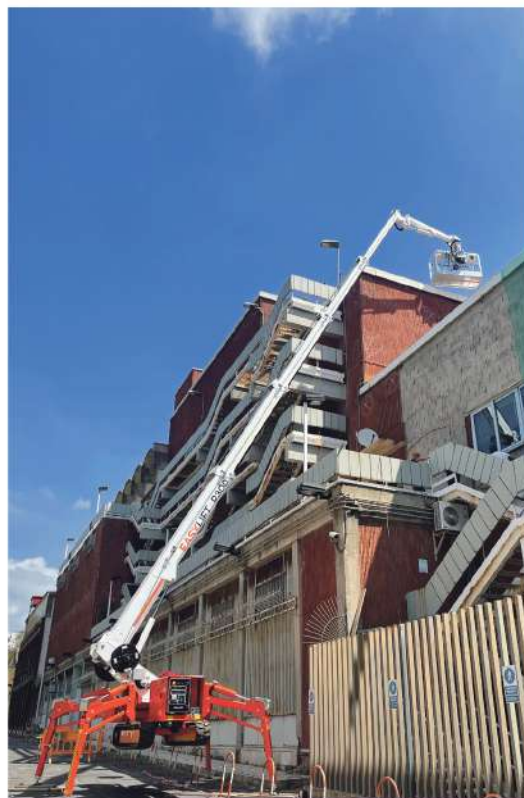
"We are delighted to report that from early next year, we will be supplying the SOCACHE 75M – which will be the largest SOCACHE access platform in the UK: a market-first. Contact us now for further information!"

For more information or to speak to Richard Martin directly, please see the details below:
M 07483 246878
enquiries@iasales.co.uk
www.iasales.co.uk



SUPPLY AND SERVICE SPIDER PLATFORMS AND TRUCK MOUNTED PLATFORMS AND WILL HAVE THE PERFECT ACCESS SOLUTION FOR YOUR BUSINESS.

FIND YOUR PERFECT PLATFORM



GET IN TOUCH TODAY OR VISIT OUR WEBSITE TO VIEW OUR RANGE.
T. 07483 246878 | E. ENQUIRIES@IASALES.CO.UK | W. WWW.IASALES.CO.UK



Soaring success of 2024

As the year is rapidly drawing to a close, Direct Hoist, a leading specialist in construction hoist hire and sales, is reflecting on not only this year's successes but also the past 10 years since the company started in 2014.

From humble beginnings in Rob's garage, to a large unit, then the recent move into even larger premises, enabled the company to grow and grow. 2022 saw the addition of its bespoke training centre offering both familiarisation and NVQ Level 2 courses in hoist installation.

The company offers training on hoists & mast climbers with lifting capacities between 200kg and 5,000kg. The training courses cover up-to-date industry working practices, legal requirements and working equipment knowledge. The on-site facility includes a 10m high training tower, with the capacity for transporting a two-tonne platform hoist, with full load to full height, with expert tutors offering hands-on optimal safety training.



Direct Hoist's expansion is a testament to its industrious, hardworking team, who always go the extra mile. As a committed living wage employer, Direct Hoist sees its workers as the company's backbone. But it's not only salaries that are supported, Direct Hoist puts its staff through NVQ courses, rigorous health & safety training, and further manufacturer courses but has also trained some of its staff as Mental Health First Aiders, further signalling its commitment to the Workplace Mental Health Charter, through staff wellbeing.

In May 2022, Direct Hoist became the UK distributor of Electroelsa, an Italian manufacturer of mast-climbing work platforms (MCWPs), transport platforms, material hoists and construction hoists. This summer they exhibited at Vertikal Days, a two-day event that showcases equipment for lifting and working at height, where they displayed a wide

selection of Electroelsa equipment including a PM-M56 transport platform, the P46 mast climber, PM-M23, and PM-M10, and demonstrated Electroelsa's new safety feature, missing bolts presence – which detects missing mast bolts during assembly.

Also this year, Electroelsa in conjunction with Direct Hoists' expertise in the UK safety regulations, is implementing a wide range of technological innovations, which Direct Hoist is excited to provide to the British construction industry in its ever-growing Electroelsa hire fleet.

Over the past decade, the company has a pioneering approach to sustainability in the industry, from a fleet of vans powered by 100% renewable HVO fuel with a 90% reduction in CO₂ to new 100% renewable electricity powering Direct Hoists premises and are in the process of joining the eco community – a global village of over 6,000 like-minded environmentalists dedicated to making positive change for our planet.

Its ever-growing Electroelsa hire fleet can now be seen on a city skyline near you, its signature vivid yellow is hard to miss. Direct Hoists' future is looking bright.

For more information, please contact the team today:
T 01724 781647
info@directhoist.co.uk
www.directhoist.co.uk



DIRECT HOIST

OFFICIAL UK DISTRIBUTOR OF

Electroelsa

TAKING YOU UP IN THE WORLD

ANNIVERSARY

10TH

DIRECT HOIST

EST. 2014

01724 781647

DIRECTHOIST.CO.UK

ModCon Cabin Trader Ltd

ModCon Cabin Trader was formed in 2017 by Alan Willets of whom has 25 years experience of working for some major manufacturers in the Modular & Portable Building Industry.

ModCon Cabins as it is also known manufactures and supplies Steel Anti Vandal Portable Cabins, Containers, Modular Buildings and all site ancillary items associated with the Portable Building Industry. Please visit: www.modconcabins.co.uk

Items such as Portable Offices, Canteens, Toilet units, Drying units, Storage Containers, Chemstores, Smoking Shelters, Effluent Tanks,



Staircases are regular and repeat produced items that we manufacture for our clients.

Based in Gloucestershire in the South West we are logistically nicely placed around all the major motorway networks for ease of transportation.

Our workforce are all very skilled and experienced fabricators of whom have many years experience working within our industry and so know the expectancy of our customers requirements so you can be sure that if you approach ModCon Cabins to undertake your work you are in very good hands!

Being that all items produced are mostly built on a jig and to customers own specification we are open to undertaking bespoke

enquiries too so please feel free to engage with us here at ModCon Cabins even if you have a rather random enquiry for certain products.

Why not also take a look at ModCon Cabin Traders other side of the business which is an Auction/Resale website that allows all and sundry to utilise the site to sell new & used Portable Building products which operates very similar to a well-known auction/resale site we are all familiar with, however only for products relating to our industry.

Contact
T 0333 404 8822
info@modconcabins.co.uk
www.modconcabins.co.uk



ModConCabins
 Manufacturer of Modular, Containers & Cabins

Steel AV Cabins • Smoking Shelters • Chemical Stores & Storage Units
 Staircases & Steps • Effluent Tanks • Water Bowsers • Turnstiles



INTRODUCING



MODCONCABINTRADER
www.modconcabins.co.uk

ModCon Cabin Trader, the Modular, Portable Building & Plant Industry related, Resale/Auction website!

info@modconcabins.co.uk

+44(0)333 404 8822 07842 318869

Introducing the Eco Clipper Electric Mowing Systems

Eco Clipper offers large area mowers that help field managers minimise mowing costs while producing a professional finish. The Eco Clipper mowing system was originally developed to replace the cylinder mower in turfgrass production. The aim was to retain the cutting performance of a well-tuned cylinder mower, but not the high maintenance requirements and sensitivity to mowing conditions, such as wet grass and weeds.

The system

The smooth cutting decks with fast spinning small blades ensure a high quality of cut and a good distribution of clippings. Thanks to the electrically driven blades, the mower is very economical and quiet. The large wheels and smart mower deck linking system ensures good contour following and enables high mowing speeds.



The benefits

Users report high productivity gains and appreciate the low maintenance requirements and the ability to schedule mowing even under less favourable mowing conditions, such as early morning dew and wet autumn, which can often prevent removal of grass clippings.

The models

Municipalities and sports field and park managers have discovered the advantages of the Eco Clipper mowing system. For them, Eco Clipper now offers two versions: the 4.11m wide EC-FM4 Sport and the 3.43m wide EC-FM343. Both are positioned in front of the tractor, providing excellent visibility and comfort for the tractor driver.

The EC-FM4 Sport has four independent mowing decks, mows till 4.11m wide and folds up to 2.5m width. It only needs 50hp, but fits best to small size agricultural tractors. To meet the demand for more lightweight mowers suitable for most park tractors from 40hp upwards, the Eco Clipper FM343 has been developed. This three-part Eco Clipper front mower cuts 343cm wide and folds to a transport width of 170cm. As with the larger 411cm wide EC-FM4, electricity is provided by a PTO-powered generator behind the tractor.

For more information, please see below:
info@ecoclipper.com
<https://www.ecoclipper.com>



'Dedicated to offer the best mowing system for maintaining large area turfgrass'



Eco Clipper FM4 Sport
for sporting grounds
www.ecoclipper.com

ECO CLIPPER®

How are YOU prioritising the safety of your commercial fleet?

Let's face it – how confident are you that your commercial drivers are truly prioritising safety on the roads? Can you be certain that daily walk-around checks are performed accurately? How do you know your drivers are actually getting out of their cabs to inspect their windscreens and tyres before ticking every box and going on their way? For many commercial fleets, the truth is that you don't.

It is well-documented that driving for work is one of the most dangerous things you can ask your employees to do. A staggering 33% of road deaths and 20% of serious injuries involve someone driving for work. So what are you doing about it?

The reality of road safety in commercial fleets

Managing a fleet of commercial vehicles is no easy task. The logistical challenges are immense, and ensuring the safety of each driver is paramount. However, safety protocols can often become mere checkboxes in a long list of daily duties. When the pressure is on to meet delivery schedules and performance targets, it's easy for thorough inspections to fall by the wayside.

But this isn't just about meeting regulatory requirements or avoiding fines. The human cost is significant. When a driver skips a safety check, it could lead to severe consequences – an accident that could have been

prevented, injuries, or even fatalities. These incidents not only affect the driver and their family but can also have a profound impact on your business, from increased insurance premiums to the potential loss of contracts.

The importance of thorough walk-around checks

Daily walk-around checks are a crucial part of ensuring vehicle safety. These inspections are designed to catch potential issues before they become serious problems. A cracked windscreen might seem like a minor issue, but it can obstruct the driver's view and become a major hazard. Worn tyres can lead to blowouts, especially at high speeds, putting the driver and others on the road at risk.

Ensuring that these checks are carried out properly is vital. This means making sure that your drivers are not just ticking boxes but are actually getting out of their cabs and performing the inspections thoroughly. However, manual checks can be inconsistent. Fatigue, complacency, or simple oversight can lead to missed steps, and without a robust system in place, these errors can go unnoticed until it's too late.

Choosing CheckedSafe for safer roads

This is where CheckedSafe comes in. CheckedSafe is a comprehensive SaaS solution designed to ensure that your fleet's safety checks are carried out accurately and efficiently. With our system, you can digitise your inspection processes, making it easier for drivers to complete checks and for you to monitor compliance.

We provide a user-friendly app that guides drivers through each step of the inspection process, making sure that no item is overlooked. We do this by dating, timestamping and geolocating every time they press a button, so you can see if they have raced through the checks in two minutes or carried it out properly. The software also uses an accelerometer to make sure they're walking around the vehicle to do the checks, not just sitting in their cab.

Meanwhile, from your offices, you'll be able to monitor user activity, view comprehensive maintenance



reports in real-time, identify outstanding tasks and vehicle defects, and schedule services with our intuitive system. We also offer secure data storage and a clear end-to-end audit trail, so that you can protect your business in the event of investigations.

Don't just tick boxes, commit to comprehensive safety

Don't wait for a serious incident to highlight the gaps in your safety protocols. Act proactively to mitigate risks and ensure that every journey your drivers make is a safe one. With CheckedSafe, you gain peace of mind knowing that your fleet is compliant, your drivers are protected, and your business is safeguarded against avoidable accidents and their associated costs. Prioritise safety, protect your drivers, and ensure the longevity of your business with CheckedSafe.

Take the first step towards a safer fleet today by visiting our website at: www.checkedsafe.com or ring us on: 01282 908429.



Simple and inexpensive compliance solutions tailored to any industry.

CheckedSafe provide compliance services across commercial & plant hire businesses, utilities companies, and many other service sectors that are monitored for compliance.

Vehicle Compliance

The vehicle compliance system for all fleets with paperless defect reporting and office portal.

- ✓ Driver's app
- ✓ GPS tags
- ✓ Back-office portal
- ✓ DVSA compliant

Licence Checks Service

Conduct licence checks remotely ensuring your drivers have the correct credentials.

- ✓ Simple to use
- ✓ Pay as you go
- ✓ Remote use
- ✓ OCR technology

GB Domestic Hours

Demonstrate your GB domestic hours compliance whenever needed.

- ✓ Ensure legal compliance
- ✓ Manager driver fatigue
- ✓ Improve productivity
- ✓ Real-time alerts

Lone Worker

The smart way to protect lone workers with visibility of all your team members in the hub.

- ✓ SOS red alerts
- ✓ Welfare checks
- ✓ Worker down alerts
- ✓ Group notifications

Dynamic Risk Assessment

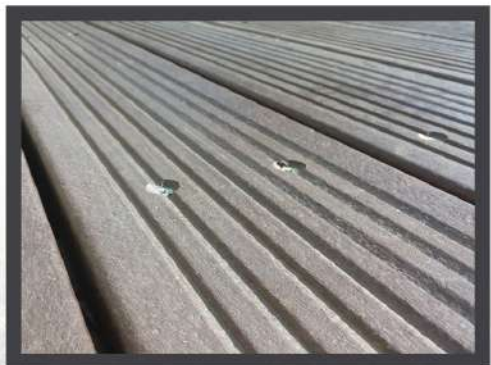
Identify hazards, assess risk, take action, and review reports, on-site, and in real-time.

- ✓ Simple to use
- ✓ Pay-as-you-go
- ✓ Remote use enables
- ✓ OCR technology

Try free for 30 days
Visit checkedsafe.com



The Zero Maintenance Alternative to Wood



Recycled Plastic

- 100% recycled and recyclable
- Impervious to fungi, algae, insects
- Never rots, splinters or cracks
- Graffiti resistant
- UV protected
- Eco-friendly and low carbon
- 100% maintenance-free
- Lasts a lifetime

[KEDEL] TRADE
ECO-FRIENDLY PLASTIC PRODUCTS

The UK's number one sealing solutions provider

Service Sealing Solutions Ltd provide a number of different sealing solutions across the UK to both the public and private sectors. As the sole UK distributor for the sealing industry's top manufacturers; DOYMA and HKD, Service Sealing Solutions Ltd specialises in high-quality service duct sealing systems for utility services and watertight seals.

Service Sealing Solutions Ltd has the exclusive rights to distribute DOYMA products in the UK. DOYMA stands on the front line when it comes to the development of innovative, practical solutions for sealing and fire systems. Providing the very best in German engineering, DOYMA is used to seal penetration points in walls and floors to permanently prevent any infiltration of gases and water into the building. All DOYMA products are designed to solve all watertight duct sealing requirements, prevent against structural damage and incorporate rubber mouldings that ensure all gas and watertight features.

Demanding building types, such as power plants, large industrial plants, reservoirs or airports, often require highly specialised

custom-made constructions. They place high demands on the fact that building penetrations such as cables and pipe work need to be permanently sealed. In the case of extraordinary pipe dimensions or special thermal, chemical or physical requirements, sealing systems in the form of a special construction are the required solution.

Service Sealing Solutions Ltd has a large range of DOYMA products that come with a 25-year warranty. DOYMA product brochures are available on the website and include products that have been supplied to some of the UK's largest projects such as HS2 and Kings Cross in London. DOYMA has recently released its new generation Curaflex Nova® gaskets, which are the perfect solution for any professional tradesman instantly looking to solve sealing problems and can be adapted to multiple applications.

Service Sealing Solutions also supplies HKD products, which are now owned by DOYMA. HKD manufacture a large range of pipe sealing systems and service conduits that are guaranteed to withstand up to four bars pressure. HKD systems have a sealing solution for service



Husband and wife team, Jim & Tina have recently visited DOYMA in Germany to find out about the innovative products that DOYMA have been developing

conduits cast into concrete without the sleeves. They are supplied and ready to use, requiring no site preparation work prior to installation. With options such as KE Socketless service conduits, KG Wall Ducts and Floor Ducts, together with KG Twin Sockets for installation in pump sumps, HKD products are ideal for situations where suitability for thin-walled concrete structures is vital.

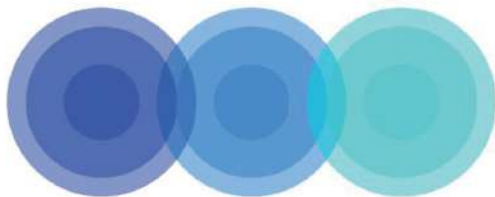
For more information, please see below:
T 01952 510050
www.servicesealingsolutions.co.uk



Service Sealing Solutions Ltd - suppliers of DOYMA products



Service Sealing Solutions Ltd are the sole UK distributor of DOYMA products. Wherever services are installed through walls, ceilings or floors, penetrating water may cause damage to buildings. Lack of attention to the points of entry of pipes and cables into the building can have serious results: damp cellars, equipment damaged by water ingress and high repair costs. Service sealing systems ensure professional and perfect pipe sealing, thus presenting excellent preventative measures against structural damage. The very best in German engineering is used to seal penetration points to the wall to permanently prevent any infiltration of gases and water into the building, and the duct sealing systems are guaranteed for 25 years. Service Sealing Solutions supply the full range of products to suit all situations for power cables, communication cables, pipes and ducts, and specialising in sealing district heating pipes.



Service Sealing Solutions Ltd



**01952 510050 | www.servicesealingsolutions.co.uk
sales@servicesealingsolutions.co.uk**

Hinges



GOLD & WASSALL
EST. 1790

Gold & Wassall have been manufacturing hinges for over two centuries, so it's safe to say we know what we're doing.

Our team of experts can design and manufacture almost any hinge, for any application.

T 01827 63391
sales@goldwassalhinges.co.uk
www.goldwassalhinges.co.uk

Project Management Software



elevateTM
Construction Made Easy

Elevate software can provide real-time updates, directing everyone on actions and this results in the team, prioritising their time and becoming more productive.

www.elevate-software.co.uk

Interior & Exterior Furniture



BESPOKE CRETE

BespokeCrete creates custom and bespoke furniture, outdoor kitchens, kitchen worktops, waterfall islands, patio sets, indoor table & bench sets, coffee tables, baths, sinks and so much more – that is fully waterproof, heat, stain and scratch resistant.

T 0800 061 4157
info@bespokecrete.com
www.bespokecrete.com

Deephole Drilling



UNISIG
DEEP HOLE DRILLING SYSTEMS

Our industry-leading customers around the world rely on UNISIG® deep hole drilling technologies for powerful, productive solutions and value. We engineer our machines to handle a complete range of applications, and support them with our high level of expertise and service.

www.unisig.com

Safety Consultancy



DCON
SAFETY CONSULTANTS

DCON Safety Consultants is committed to understanding the specific needs, goals, and desires of each individual client and project.

T +353 (0)1 611 1556
info@dconsafety.com
dconsafety.com

Sign Plaques & Architectural Castings



LEANDER
ARCHITECTURAL

Manufacturers and designers of high quality fingerpost signs, bandstands, bespoke canopies, Porte-cochère, blue plaques, noticeboards, cast signage, memorial plaques, street furniture, gazebos and much more.

T 01298 814941
www.leanderuk.com

Portable Buildings



ModConCabins
Manufacturer of Modular, Containers & Cabins

ModCon Cabins provides modern, affordable and bespoke modular and portable buildings for a multitude of situations, each one carefully crafted from new and used shipping containers.

T 0333 404 8822
modconcabins.co.uk

Eco-Friendly Plastic Products



KEDEL TRADE
ECO-FRIENDLY PLASTIC PRODUCTS

Kedel Limited is a family business, founded on ethical and ecologically sound principles.

We created our business to showcase the very best recycled plastic products, putting green, sustainable living at the heart of all our company decisions.

T 01282 861325
www.kedel.co.uk

Compliance Solutions



CheckedSafe was developed to provide simple and inexpensive compliance solutions that could be tailored to any industry.

T 01282 908429
info@checkedsafe.com
www.checkedsafe.com

Timber



The Company was founded in 1883 by Louis Vandecasteele. In those days, wagon making was the main commercial activity. Desiré Vandecasteele, son of the founder, then added a small sawmill.

Contact
T +32 56 43 33 00
vandecasteele.be/en

Machinery

Landscaping Machinery



With 35 years of experience in the access industry, we will find the platform most suited for your needs and supply at the best price achievable.

Independent Access Sales offer a complete service management facility throughout the UK.

T 07483 246878
enquiries@iasales.co.uk
iasales.co.uk



Eco Clipper offers large electric-powered mowers that help field managers minimise mowing costs for sports fields. Users report high productivity gains and appreciate low maintenance requirements, quiet operation and the ability to schedule mowing even under less favourable mowing conditions, such as early morning dew and wet autumn.

T +31 (0)6 46 75 35 60
www.ecoclipper.com



Engineering & Consultancy

Waterproofing



Bartels & Vedder is an engineering firm, specialised in floating and flood proof buildings and structures.

T +31 (0)6 422 398 53
www.bartelsvedder.nl



TuffStuff® is the UK's premium designer, manufacturer and supplier of heavy-duty GRP waterproof flat roofing systems.

T 01977 680250
orders@tuffwaterproofing.co.uk
www.tuffstuff.co.uk

Fixings

Storage



Our Award Winning Solutions are one of the most cost-effective solutions to enable the fitting of external furniture through external wall insulation and rain screen cladding, with the added benefit of being designed specifically for the job.

T 01884 211540
info@swifix.co.uk
www.swifix.co.uk



Wallbed Systems offers a large range of wallbed hardware designs. We produce many different styles of wallbeds and ship all over the world.

Contact Jeremy Waller,
T +44 (0)208 704 5796
jeremy.waller@
wallbedsystems.co.uk
www.wallbedsystems.co.uk



Unrivalled professional expertise: Wakefield's expert-chartered surveyor



Fennell Green & Bates is a chartered mineral, waste, energy and building surveyors practice, with a specialism in project co-ordination and management in the construction and mining industries.

The company had evolved substantially since its inception in 1875 when founders Mr Fennell and Mr Green, took over the practice from the eminent mining engineer: Mr J Tolson White.

Under the expert direction of the current director, the company has expanded exponentially, employing experienced staff with chartered surveying expertise. From its convenient central base the UK in Wakefield, West Yorkshire, customers can be reached easily within three hours, excluding the southern counties of Devon and Cornwall, which takes a little longer.

As leading specialists in construction project co-ordination and management, the company's range of services includes: building surveys, land condition

surveys, coal and other mining reports, contaminated land audits, land and mine surveying, geotechnical advice and site investigation.

To allow for a more streamlined process, the company has recently embraced the digital era, by moving its substantial archive, documentation and filing systems to a more secure online storage. This has already provided a more efficient service for its large customer base of: self-build, SME home builders and commercial developers, farmers and landowners.

"Experience in all types of land and former use with a large archive of material to research, helps inform modern solutions to ground conditions problems," says company Partner, John Carlon and keeps Fennell Green & Bates ahead of the competition.

"Our experienced staff are familiar with mining law, land law and regulation and redeveloping land. Experience in subsidence identification from mining and treating the effect, is highly valued by our customers," elaborates John.

It is this winning combination of experienced staff, with knowledgeable areas of expertise, with access to extensive archived documents and drawings, that has cemented the company as a leading specialised chartered surveyor.

Enlisting the guidance of an experienced chartered surveyor, like Fennell Green & Bates, at the early stages of land development or building property can mitigate against further challenges. Drawbacks could include: mining induced ground conditions, contamination and

the boundaries of the site, but through informative advice, customers can make detailed, informed decisions.

It is these important, expert risk assessments that can determine whether land use can be developed further to what the client chooses.

"We can advise on developments in former coal mining areas and solutions to stabilise land from any mining or industrial use. Our coal mining risk assessments can be included with future planning applications in areas of high risk as identified on the Coal Authority data base.

We offer competitive, cost-effective solutions to most land condition problems. Our latest services include: level 3 structural surveys, contaminated land reviews and valuation."

From its Wakefield base, this experienced chartered surveyor practice has helped a large diverse customer base across the UK and according to John, is wholly focussed on helping companies, especially smaller ones to succeed, "The plan for the future is to grow the practice and help the smaller developer to find cost-effective solutions to ground conditions and contamination."

For further information, please see the details below:
T 01924 255666
M 07739 256461
fennellgreenandbates@gmail.com
www.charteredurveyorswakefield.co.uk

Varnish

LE TONKINOIS VARNISH

LE TONKINOIS VARNISH IS A NATURAL OIL BASED YACHT VARNISH, USING A CHINESE FORMULA DATING BACK TWO OR THREE CENTURIES AND WHAT A FORMULA!

IT REMOVES YOUR BRUSH-MARKS, BRINGS OUT THE NATURAL BEAUTY OF THE TIMBER, DOESN'T CRACK OR FLAKE OFF, AND IS PERMANENT, SIMPLY ADD A FURTHER COAT EVERY FEW YEARS.

LE TONKINOIS CLASSIC IS THE ORIGINAL CHINESE RECIPE, WHICH HAS PROVED TO BE A FIRST CLASS RESILIENT AND RELIABLE VARNISH FOR MORE THAN A CENTURY. TRADITIONALLY USED BY THE FRENCH NAVY FOR ALL THEIR SAILING VESSELS, AND WIDELY USED BY TRADITIONAL CRAFTSMEN FOR YEARS. IT TENDS TO GIVE A THICKER COAT THAN MARINE NO 1.



Click here
ebay

Please visit **www.letonkinoisvarnish.co.uk**
Telephone **01628 629892** or email **mail@letonkinoisvarnish.uk**