

BUILDING UPDATE

ISSUE: 673 April | www.solutionspublishing.co.uk



GOLD & WASSALL
QUALITY HINGES FOR OVER 200 YEARS

MAKING HINGES SINCE 1790
100% UK MANUFACTURED

Gold & Wassall are the UK's No.1 manufacturer of hinges. We provide a fully comprehensive manufacturing service, which enables us to offer any hinge, for any application.

All our hinges are manufactured at our premises in Tamworth, UK.

We have a huge stock range, all of which are available for immediate dispatch.

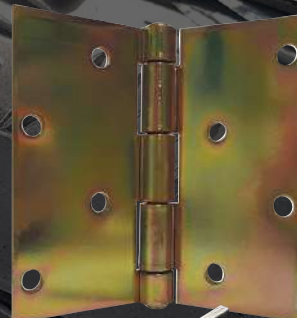
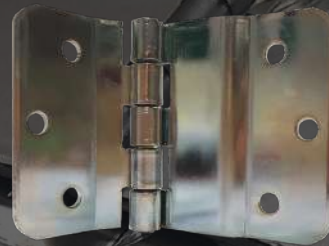
Continuous Hinges

Butt/Backflap Hinges

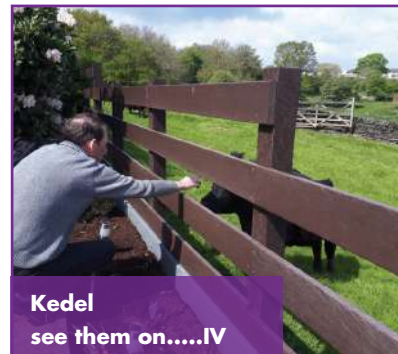
Lift-Off Hinges

Heavy Duty Hinges

Special Purpose Hinges



Modcon Cabins
see them on.....II



Kedel
see them on.....IV



LS Products BV (Ecoclipper)
see them on.....VIII



VIGILEX®
SAFETY PROTECTION **STIF**
EXPLOSION PROTECTION
MacClancy & Sons
see them on.....XV



Checkedsafe
see them on.....XVIII

Please check our new website:
www.goldwassallhinges.co.uk
Email: sales@goldwassallhinges.co.uk
Telephone: **01827 63391**

ModCon Cabin Trader Ltd

ModCon Cabin Trader was formed in 2017 by Alan Willetts of whom has 25 years experience of working for some major manufacturers in the Modular & Portable Building Industry.

ModCon Cabins as it is also known manufactures and supplies Steel Anti Vandal Portable Cabins, Containers, Modular Buildings and all site ancillary items associated with the Portable Building Industry. Please visit: www.modconcabins.co.uk

Items such as Portable Offices, Canteens, Toilet units, Drying units, Storage Containers, Chemstores, Smoking Shelters, Effluent Tanks,



Being that all items produced are mostly built on a jig and to customers own specification we are open to undertaking bespoke enquiries too so please feel free to engage with us here at ModCon Cabins even if you have a rather random enquiry for certain products.

Why not also take a look at ModCon Cabin Traders other side of the business which is an Auction/Resale website that allows all and sundry to utilise the site to sell new & used Portable Building products which operates very similar to a well-known auction/resale site we are all familiar with, however only for products relating to our industry.

T 0333 404 8822
info@modconcabins.co.uk
www.modconcabins.co.uk



Staircases are regular and repeat produced items that we manufacture for our clients.

Based in Gloucestershire in the South West we are logistically nicely placed around all the major motorway networks for ease of transportation.

Our workforce are all very skilled and experienced fabricators of whom have many years experience working within our industry and so know the expectancy of our customers requirements so you can be sure that if you approach ModCon Cabins to undertake your work you are in very good hands!



ModConCabins
Manufacturer of Modular, Containers & Cabins

Steel AV Cabins • Smoking Shelters • Chemical Stores & Storage Units
Staircases & Steps • Effluent Tanks • Water Bowsers • Turnstiles



INTRODUCING

 **MODCONCABINTRADER**
www.modconcabins.co.uk

ModCon Cabin Trader, the Modular, Portable Building & Plant Industry related, Resale/Auction website!

info@modconcabins.co.uk

+44(0)333 404 8822 07842 318869



rapidFit[®] Riser Doors



Summary of Rapid Access

For over a decade, we have been committed to providing superior Access Panels & Riser Doors to the construction and distribution industries.

We take pride in our role as a top manufacturer and supplier and strive to continue delivering excellence in all we do.



Sliding Hinge System

Simply push and slide the door into the frame and the RapidFit spring loaded pins will release securing the door.



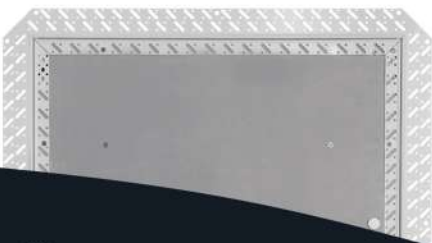
Beaded Frame changes



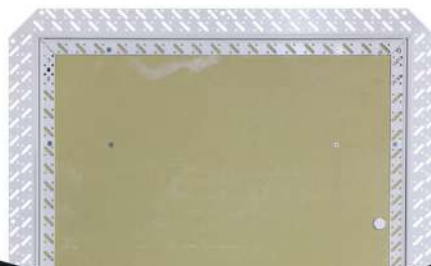
The beaded frame width on our R53 Plasterboard Faced Riser Door range will be changing from **25mm** to **50mm** as standard.

This will give us greater stability when handling and transporting our panels, reducing the risk of snagging and bending.

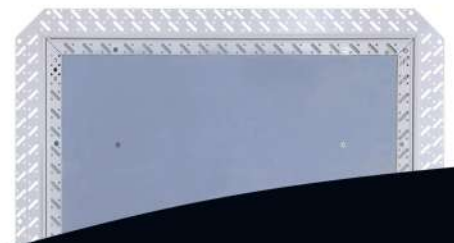
R53 Non Fire Rated
Up to 2400 x 1800mm



R53 1 Hour Fire Rated
Up to 2000 x 1800mm



R53 Fire, Acoustic & Airtight
Up to 2400 x 900mm



Number one choice for recycled plastic building materials

In this issue of Building Update, we have chosen Kedel as our Eco-Friendly Plastic Products Company of Choice 2024.

Kedel is a family business founded on ethical and ecologically sound principles. Dedicated to making sustainable living attractive, Kedel believe that by incorporating sustainable recycled plastic products into personal and working environments, it can create a happier, healthier and infinitely more sustainable future for generations to come.

Established by three brothers, Kieran, Dermot and Lewis Walch, Kedel is based in Burnley and supplies nationwide. We spoke to Lewis, who explained more about the company. "We manufacture plastic wood made from waste polystyrene, and we are also suppliers of many other types of recycled plastic profiles from other manufacturers. We stock tongue and groove boards, plastic sheet materials, decking, cladding, ground reinforcement and drainage grids, fencing and gates. In addition, we make a wide range of outdoor furniture often combining different types of recycled plastic into one product. These products

include benches, tables, picnic tables, notice boards, to name just a few. We also offer design services and have a large flatbed CNC (computer numerical controlled) machine for cutting and shaping to the CAD design parameters supplied by our customers or created for them by our in-house design team."

As specialists in building supplies and outdoor furniture, one of the main benefits of the products and services provided by Kedel is the long-term investment advantages of recycled plastic. Using recycled plastic not only greatly contributes towards the reduction of carbon footprint, but companies will see a significant reward on their return.

"It never rots, so if you build fencing or decking with it, you only do the job once in a lifetime. There's no cost of ownership, no maintenance – no costs for labour and materials, or for that matter, replacement costs.

Wood is becoming increasingly expensive and difficult to source, and needs constant attention to avoid deterioration. Yes, the initial costs for recycled plastic are higher, but over a 25-year period, a study by WRAP (Waste Resources

Action Programme), in 2000 proved it to be a more cost-effective material due to the product's extended longevity and zero maintenance properties."

'Your Housing Association' in South Manchester installed plastic fence panels made from Kedel's recycled plastic about 10 years ago. They haven't had to replace a single fence panel since!" said Lewis.

In the past, Kedel's plastic wood has been named 'Best Recycled Product' at the National Recycling Awards and is an ideal maintenance free replacement for wood, cladding, gallows brackets, pediments, fascia boards, rafter tails, finials, fencing and decking. Kedel has over 1,000 products in recycled plastics available on its website with a wide variety of profiles to choose from that could save you a lifetime of maintenance and replacement costs.

A notable product in Kedel's sustainable product range is fencing, that comes as fixed or portable panels, or you can buy the materials to make your own. You'll never need to replace a fence again. They are rot-proof and non-absorbent making them very hygienic and easy to clean. They don't chip, crack, or splinter, and are water and frost proof.

Ideal for education establishments and facilities management are Kedel's maintenance-free benches and picnic tables. They look like wood but perform like plastic, and the tables last at least five times longer than wood, making them a very attractive long-term investment.

For companies willing to create a circular economy for plastics, look no further than Kedel.

For more information, please see below:
T 01282 861325
www.kedel.co.uk



The Zero Maintenance Alternative to Wood



Recycled Plastic

- 100% recycled and recyclable
- Impervious to fungi, algae, insects
- Never rots, splinters or cracks
- Graffiti resistant
- UV Protected
- Eco-friendly and low carbon
- 100% maintenance free
- Lasts a lifetime



Please contact us on 01282 861325
sales@kedel.co.uk | www.kedel.co.uk



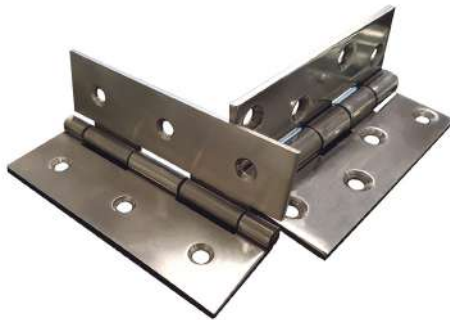
Exciting News: Gold & Wassall's new website is live!

Here at Building Update, we are thrilled to announce the launch of the brand-new Gold & Wassall Hinges website!

The new website has been a long-term project for the team at Gold & Wassall, who after months of hard work and dedication are overjoyed to see this project finally over the line.

Explore the updated design, user-friendly interface and exciting new features all designed to enhance the user experience.

As well as now making it possible to download CAD drawings and 3D models of each hinge from the website, Gold & Wassall has also introduced a new 'Hinge Finder' that allows the user to narrow down suitable hinges based on their required dimensions. Simply choose your hinge type, hinge length, open width, thickness, and pin diameter, and your results are shown instantly. This will help customers utilise the full range of hinges, and show hinges that they might not have found or considered previously.



Gold & Wassall has been manufacturing hinges for over 200 years using a mixture of tried and trusted methods along with modern technology. The launch of its new website comes timely as the company looks to continue its success into 2024 providing unrivalled levels of customer service.

Based in Tamworth, Staffordshire, Gold & Wassall manufactures all its own hinges out of its in-house purpose-built factory where it also ensures that every product goes through a rigorous testing procedure and receives the upmost attention to detail before being sold. The company prides itself on its customer service and aims to treat every customer fairly and with respect.

The new website also keeps customers informed on the latest news, events and promotions with regular blog posts. The hard-work and expertise that has gone into the creation and deployment of new website will be instrumental in bringing Gold & Wassall's vision for the next few years to life.

You will find on the new website a clearer and cleaner way to scroll through their vast range of hinges from continuous/piano, butt & backflap, standard, lift-off, and special purpose to heavy duty and bespoke made to order hinges.

Furthermore, using the company's automatic section on the website that contains eight lines of automated machines, Gold & Wassall is able to make hinges quicker and to almost any length. The company also maintains the specialist tooling for these machines which can complete multiple operations in each press.

Please note: Gold & Wassall is the only hinge company whose hinges are UK made and all of Gold & Wassall Hinges' stock is available for immediate dispatch.

Explore the new website and discover all that Gold & Wassall has to offer below:
<https://www.goldwassallhinges.co.uk/homepage>



GOLD & WASSALL
 QUALITY HINGES FOR OVER 200 YEARS

The launch of our brand new website

Gold & Wassall Hinges has established itself at the forefront of the industry since its inception over 200 years ago. With its manufacturing facilities situated in Tamworth in Staffordshire, Gold & Wassall provides an impressive range of services for design, production and manufacture of hinges, all produced in house and distributed throughout the whole of the UK. Boasting an enviable reputation within the industry, the company has positioned itself firmly as the UK's number one manufacturer of hinges.

Gold & Wassall has provided its services to various customers throughout its years in operation and serviced customers from construction to engineering companies. With a proven track record of quality, reliability and durability, Gold & Wassall ensures it maintains complete control over the design and high quality of its goods.



Please check our new website: www.goldwassallhinges.co.uk
 Email sales@goldwassallhinges.co.uk | Telephone **01827 63391**

Quality and service count: Customised doors and panelling

Pandor is a leading manufacturer of customised doors and panelling across the UK to sectors such as commercial buildings, offices, hospitals and flats.

Established in 2014 by Mike Hill, the company has grown exponentially over the last nine years, priding itself on supplying exceptional customer service and high-spec products. Mike has expertise in the industry having worked in the fire door industry for over 40 years and along with his team is happy to provide customers with bespoke orders.

Pandor has production facilities in Sittingbourne, Kent and offices in London. We chatted with founder and director, Mike to find out more about the company, "We specialise in made-to-order client requirements for fire doors, decorative doors, frames and other associated items such as screens and windows."

"Our speciality though due to my background, is certified fire doors and door sets and we pride ourselves on a personal and prompt service with quick lead times on manufacturing."

"The COVID-19 pandemic set us back of course, as the construction industry ground to a standstill. We soon restarted though and have been ever busy, focusing on adding new services in the near future. Our unique selling point is our investment in modern machinery across the board, ensuring that we always produce the highest-quality products. These



include a Holzher 5 Axis CNC Twin Bed Router, heavy-duty sanding machine, veneer flow line press and first-class lipping and edge banding."

Fire doors are integral to optimised passive fire protection systems across industrial, commercial and domestic buildings in the UK. Precision-designed primarily to mitigate against the spread of fire, smoke and toxic gases from one area to another, fire doors allow occupants, whether residents or workers extra time to evacuate accordingly. A secondary factor is that compliant fire doors give firefighters more time to arrive at the scene of the fire and control the fire, before it spreads further. Using a system of compartmentalisation, with fire doors lined throughout in corridors or stairwells, can create fire-resistant barriers in a high-rise block and importantly help slow down the spread of fire and smoke.

Fire doors are given FD ratings from 30, 60, 90 to 120, with FD30 being the most common choice. This

typically gives 30 minutes fire safety protection, in the event of a fire.

Following the tragedy at Grenfell Tower, North Kensington where sadly 72 residents died, the subsequent Fire Safety (England) Regulations in 2022 came into effect on 23rd January 2023. With all eyes on optimised fire safety, Pandor can manufacture customised fire doors, in accordance with FD30, 60, 90 or 120 certifications.

"Our fire doors can be laminated, painted or decoratively veneered and our acoustic doors can also be fire rated. The acoustic door ratings are certified based on how well the sound is contained in the door itself. The doors are tested to different decibel (dB) levels, dependant on the end location, with the higher the acoustic rating, namely the louder the sound it can contain. For example, the acoustic rating for doors in residential flats is 29dB, raising to 30dB in a typical school classroom."

"We supply fire-rated panelling if required, in stock and cut sizes, with a choice of veneer, laminate or paint finishes. Finally, our door frames are manufactured to customised order, with clear or paint finishes," added Mike.

**For more information,
please see the details below:**
T 0208 2797611
M 07909 530007
mike@pandor.ltd
http://pandor.ltd



Pandor

BESPOKE DOOR AND PANEL MANUFACTURERS

FIRE DOORS | ACOUSTIC DOORS | PANELLING | DOOR FRAMES

THREE KEY VALUES

SUPERLATIVE QUALITY | SHORTEST DELIVERY | ATTENTION TO DETAIL

OFFERING SERVICE LIKE NO OTHER

EXCELLING IN ACHIEVING FAST LEAD TIMES
FOR BESPOKE FIRE DOOR SETS

QUALITY AND SERVICE WITH A SMILE

PROUD MEMBERS OF THE BM TRADA Q-MARK SCHEME
FOR FIRE DOORS YOU CAN DEPEND ON

UNIT F2/F3 | LONDON ROAD TRADING ESTATE
SITTINGBOURNE | KENT | ME10 1SX

CALL: 0208 279 7611 | 07909 530 007

EMAIL: MIKE@PANDOR.LTD | PANDORLTD@HOTMAIL.COM

Caring for the Environment - Healthcare & Hot Water

To help achieve climate-neutral building stock by 2050, the healthcare sector is being challenged to reduce operational energy use. Securing more sustainable hot water is one of the best, and easiest ways of making active carbon savings today as the sector invests to meet a shortfall in beds and a desire to optimise space in the face of the growing trend for self-contained single-room spaces, preferably with wetrooms which are more practical for those with restricted mobility.

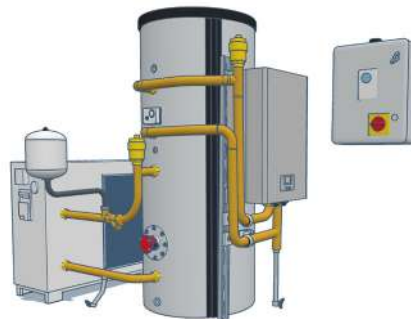
Addressing the efficiency of domestic hot water (DHW) systems – whether through the implementation of heat pumps, solar thermal, direct electric water heating or even simple modernisation of existing gas appliances – helps properties meet new construction and sustainability goals in a practical and cost-effective manner.

For buildings already on gas and that rely on large amounts of DHW, silent solar thermal preheat is the preferable option. But looking forward, new build projects, unless exhibiting very large hot water demands, will struggle to receive permission (under Part L of the building regulations) for a new gas connection and as a result will specify electric-based systems.

Larger retrofit projects could likely face the same issues, although this will remain unclear until updates are published as the Future Buildings Standard in 2025. This still should lead to application design tending towards that which blends heat pumps for

preheat with other sustainable options that can include solar thermal, but particularly electric boilers. New hybrid system approaches, including prefabricated packaged plant rooms, also provide for better use of the spaces that already exist, without the need to undertake expensive and disruptive building projects.

Though not applicable to private care facilities, it is worth noting NHS health technical memoranda (HTM) 04-01 states any preheat vessels must be guaranteed to preheat to a minimum of 45°C. This effectively precludes the use of solar thermal as a lone source for preheat due to annual variation in production. It does, however, match the minimum working flow temperature for preheat that would be designed into a system utilising the current generation of air source heat pump.



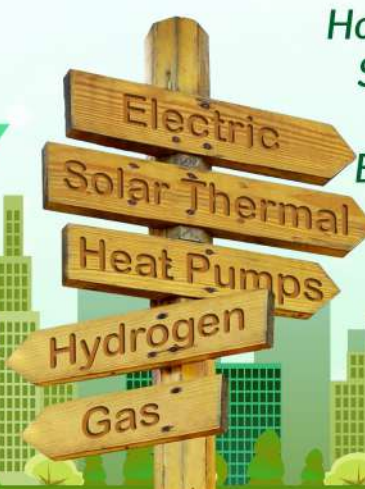
Under such conditions, a typical sustainable application would see a cylinder sized to meet the storage requirements of the building's hot water demands with the heat coming from a combination of an air source heat pump and solar thermal collectors. Working together the renewables can offset the majority of the electrical costs otherwise required to heat the water, even during periods of peak demand.

T 01252 551540
enquiries@advenco.co
www.advenco.co

ADVECO HOT WATER SPECIALISTS

Cut carbon by as much as 70%, reduce operational costs by at least 30%

- ✔ HEAT PUMPS
- ✔ SOLAR THERMAL
- ✔ ELECTRIC BOILERS
- ✔ LIVE METERING
- ✔ CYLINDERS
- ✔ PACKAGED SYSTEMS
- ✔ CHILLER HEAT RECOVERY
- ✔ GAS WATER HEATERS
- ✔ PACKAGED PLANT ROOMS



Hot Water Design,
Supply & Service
For Commercial
Building Projects

01252 551 540 enquiries@advenco.co Advenco.co

LS Products BV to introduce new Autonomous range in 2024

In this issue of Building Update, we are pleased to feature LS Products BV as our Landscaping Product Company of the Year.

LS Products BV is the manufacturer of the innovative Eco Clipper electric mower system that was introduced for the turf grower industry in 2018.

Due to the fact that all the mowers in the range are electrically driven and use a special mowing deck design that incorporates small mowing blades, the Eco Clipper range delivers fantastic contour following and has the capability to disperse clippings well even in wet grass.

Furthermore, because of the high-speed mowing system, productivity is inevitably higher and fuel efficiency better due to the small blades and electric drive. The machine is very quiet and versatile under different conditions such as dewy grass and weeds.

The Eco Clipper® Mowing System evolved from the mowing system that was originally developed in the nineties on the turfgrass farm of the Leijenaar family in the Netherlands. At that time, the electrically driven 10m wide rotary mower was a revolution for the turfgrass industry, and up until 2008 there has been various models of this rotary mower developed and marketed by Leijenaar Products BV.

In 2019, the Eco Clipper range was successfully introduced to turfgrass farms across Europe and then in 2020 they introduced the 14.11-meter-wide Eco Clipper: RM14 Butterfly Mower and the Eco Clipper TM14 tri-deck mower that were both revolutionary mowers for the turfgrass growers and sports ground sectors.



Syb Leijenaar is the Managing Director of LS Products BV and has a vast amount of experience that is deeply rooted in mechanical engineering and mechatronic systems design, and is one of the creators of the Eco Clipper range. We asked Syb how the company has fared over the last 12 months and what plans it has for the future.

"The last 12 months have been slower business wise, although it seems business is picking up since summer. As we are an agile company, we used the opportunity to spend more time on new developments. Our current developments are mainly focused on autonomous large area mowing. Our autonomous mowing system will be introduced in the coming year. We offer a 309cm or a 513cm wide Eco Clipper mowing deck where the power comes from either a diesel generator or a 61kWh battery pack."

"We are keen to increase productivity in large area quality mowing, hence lowering the mowing costs for our customers. For turfgrass growers and sports ground managers, we already have the most productive equipment in the market due to the large cutting width and high possible mowing speeds. For the autonomous mower it is important that it can be operated safely without immediate supervision otherwise it won't save labour. Therefore, we have partnered with a Danish firm that fully focuses on safe operation of autonomous equipment in the field."

Due next year, the Eco Clipper Autonomous Mower uses three different types of obstacle detection: camera; lidar; and radar for its safety in dusty environments. The new Autonomous range will meet speeds of up to 16km/h and surpasses all safety standards with its cutting-edge obstacle detection technology.

"Over the next few years we expect to grow gradually in the sports ground market. We receive strong feedback from our users stating that they like the capacity, quiet running and economic use of fuel. In 2024, we will be introducing the autonomous mower on a couple of selected farms. We want at least a year of real-life experience before we introduce these systems to a wider audience," added Syb.

LS Products and its Danish partners are really pushing the boundaries in autonomous mowing solutions, and the next five years are looking very fruitful for both businesses. In closing, we asked Syb how he felt receiving our award.

"I feel honoured being selected for the Landscaping Product of the Year Award. When you work with these products every day, you no longer notice that they are different. This award reminds us that we stand out. We are proud of that."

For more information, please see below:
info@ecoclipper.com
<https://www.ecoclipper.com>

Leaders in services, and health and safety for the piling industry

Situated in Glasgow, Burnside Plant Ltd is a piling contractor and a company that prides itself on achieving the very best in customer satisfaction. Through this ethos, the company has established a strong reputation for its outstanding services, among its portfolio of regular clientele based throughout the UK.

Utilising its dedicated and professional team, Burnside Plant maintains an impressive amount of experience and expertise, enabling the company to be able to provide an understanding and flexible approach to its customer's requirements, while maintaining the highest levels of quality and safety.

"We provide a whole service including design, supply of materials and installation of sheet piles, tubular piles and provide hire or sales of the piles," said Shirley.

Burnside Plant provides sheet pile installation, cofferdam installation, king post installation, mini piling installation, tube installation, permanent and temporary design works, sheet pile hire and sale, Movax hire and haulage services, across the UK.

The company design, supplies and installs a vast amount of products including interlocking Larssen sheet piling retaining walls, for use in both temporary and permanent applications, king post systems, to meet UK standards and its customers particular specifications, and provides various methods of mini piling. Burnside Plant also maintains its own haulage for delivery and collection of sheet piles and all plant hire.

Shirley added, "We complete the whole scope of the

job. Our customer base can be quite varied, clients can range from civil work to everyday householder's requiring foundation piling for doing an extension."



One of the main aspects of the company's services is its commitment to health and safety.

Shirley stated, "We are Constructionline gold accredited, which means that we uphold high standards of health and safety, including online health and safety for our team. We are fully accredited and we have also taken out other health and safety precautions, including height restrictors on our machines and dead man switches, in case of an emergency. We have adopted various health and safety practices, as we understand that this is a dangerous industry and we have taken all the necessary precautions to ensure that everyone from our employees to anyone around, is kept safe."

As the company looks ahead, Burnside Plant is proud of what it has achieved so far and has experienced consistent growth. Moving forward, the company plans to continue to expand, and gain further confidence from its clients, knowing that their health and safety is of paramount importance to Burnside Plant.

"To be able to receive Constructionline gold, shows to our customers that we are a responsible company, doing everything we can to ensure safety." Shirley continued, "We are a small company, so we are very proud of it. We feel this is why our customers speak so highly of our services and often recommend us to others."

For more information, please see below:
T 01416 479331
M 07787 575418
www.burnsideplant.co.uk

BURNSIDE PLANT HIRE LTD

SHEET PILING - FOUNDATION PILING -
MINI PILING - NATIONWIDE SERVICE

Sheet Pile Installation
Cofferdamn Installation
King Post Installation
Mini Piling Installation
Tube Installation
Permanent and Temporary Design Works

0141 374 2895 • 07787 575418 • 0141 647 9331

Email: shirley@burnsideplant.co.uk

Web: www.burnsideplant.co.uk

Glasgow

Make your project possible

DCON Safety Consultants Limited offers leading health and safety consultancy and construction statute advice services. The company prioritises and specialises in the highest levels of informed and intelligent advice, senior project resource allocation and compliance assurance. Informed by industry expertise, DCON Safety Consultants Limited knows that every project has potential risks, no matter what its potential benefits, so its team of highly experienced construction professionals helps to ensure clients' statutory conformity.

Upon gaining understanding of the specific needs, goals and desires of each client and their project, DCON Safety Consultants Limited is dedicated to implementing a design and construction management plan that will meet or exceed these requirements. And, DCON Safety Consultants Limited ensures that there is honesty, integrity, trust and professionalism underpinning every project.

Moreover, the company's services are centred on three delivery principles:

- **Maximising Quality:** The company implements proven health, safety and wellbeing strategies to help clients achieve high quality and cost-effective work commensurate with the design of their projects.
- **Minimising Risk:** The company effectively manages design and delivery risk on projects to match each client's desired risk level profile.
- **Managing Compliance:** The company relies on its extensive background working on a wide variety of projects to assist clients in developing, monitoring and maintaining compliance performance.

This excellent service would not be possible without the leadership of Diarmuid Condon, a construction industry leader who brings unique perspectives to encourage,



support and mentor the abilities of his colleagues. As a construction professional with a surveying background and experience spanning two decades, Diarmuid is emblematic of DCON Safety Consultants Limited's commitment to providing outstanding services to clients.

Diarmuid has contributed his invaluable expertise to over 400 projects over 20 years, with a client list including public sector departments, corporate owners, real estate developers, main contractors, design professionals and infrastructural bodies. With this incredible portfolio, Diarmuid is helping DCON Safety Consultants Limited to become a leader in health and safety consultancy across the construction industry.

Key to DCON Safety Consultants Limited's services is working as a Project Supervisor for the Design Process and CDM Advisor in various sectors across the Irish construction market. No project is too simple or too complex for the company's construction safety consultants, all of whom are construction professionals with an average of 20 years' experience in the built environment. The ability to maximise this knowledge

and skillset means DCON Safety Consultants Limited can generate distinctive and innovative ideas from traditional PSDP service inputs and outputs.

DCON Safety Consultants Limited also provides its main contractor clients with intelligent, practical, and reasonable physical site safety advice to support compliance and good practice adherence. Behavioural safety outcomes inform how the company approaches each solution with the contractor and their supply chain, identifying opportunities for improvement.

To complement this, DCON Safety Consultants Limited can also help with clients' health and safety strategy. Its holistic and integrated approach can help unlock substantial benefits for clients by providing a structured, objective and SMART framework for full optimisation through the creation of an environment that embraces health, safety and wellbeing.

This means DCON Safety Consultants Limited helps clients to improve their health, safety and environmental performance; enhance staff satisfaction thanks to improved performance; improve risk management and corporate governance with a clear audit trail; gain confidence from long-term planning, better sustainability and performance; and improve overall corporate reputation, including greater staff satisfaction and a more efficient procurement and supply chain.

If you are interested in finding out more information on DCON Safety Consultants Limited's full range of excellent services, head to the website or get in touch directly using the contact details below.

T +353 (0)1 611 1556
diarmuid.condon@dconsafety.com
www.dconsafety.com



Leaders in Built Environmental Safety and Health and Wellbeing Consultancy

Consulting on various aspects of project design, constructability and operational lifecycle matters for local and global commercial clients.



OUR SERVICES

- DESIGN SUPERVISOR
- PLANNING COMPLIANCE
- CONSTRUCTION HEALTH & SAFETY
- HEALTH & SAFETY STRATEGY
- EXPERT WITNESS

Please visit: www.dconsafety.com

Email info@dconsafety.com • Phone +353 (0)1 611 1556

DCON Safety Consultants, Suite 5, Fitzwilliam Square East, Dublin 2



IAS for your perfect access platform



In this issue of Building Update, we are honoured to select Independent Access Sales (IAS) as our Access Platform Company of the Year.

Access Platforms are indispensable for working at heights or hard-to-reach places, providing workers with a robust structure across many industrial sectors. Many essential services such as air conditioning units, pipes, and ductwork are often stored high in the roof and access platforms are key to installation and essential repairs/maintenance throughout the year. With health & safety in mind, the steady, well-fabricated structures give extra reassurance to workers, throughout the operation period.

Independent Access Sales (IAS) is a relatively new company but with decades of expertise behind it. Established in 2020 by Managing Director: Richard Martin, the Huntingdon-based company is set to take the country by storm.

IAS is a distributor of access platforms across the UK and Ireland and Richard brings more than 35 years of industry experience, from scaffolding, cradle platforms, erection, surveyor, to supervisor. "We are getting noticed now across the industry. We have won three awards in the last twelve months, including a Golden Award from Media2. We've been to numerous trade shows and generated a lot of interest."

"We are excited to reveal that we have exclusively signed with SOGAGE: producer of globally-leading aerial platforms to distribute their truck-mounted platforms, up to 100 metres. A truck-mounted platform



is a mobile elevating platform, which can be attached to a road-licensed chassis and is great when you require an access platform to be adaptable, as it can be switched from site to site easily. We are looking forward to adding this to our growing portfolio and by

the New Year, expect to be selling a wider range of Easylift Spider Platforms, SOGAGE Truck Mounting Platforms and Leonardo HD by Bravi HD to new and existing customers across: facilities management, construction, heritage restoration to tree surgery and many more."

The existing SOGAGE truck line has been flying off the shelves with customers already this year: the SOGAGE 20T carries loads up to 230kg and is a favoured mounted platform for working at height. The SOGAGE 21DJ works up to 20.3M and is a second popular choice for many applications.

For those working in facilities management or heritage restoration, the Easylift srl Piattaforme Aeree R360 provides a turret rotation of 360° for cleaning and delicate work in limited spaces. Designed to work at a height of 35.4M, it is also preferred by tree surgeons for all aspects of arboriculture. The R260 model works to a maximum height of 26M, with an outreach of

13.5M, precision-designed for maintenance and installation jobs.

The Bravi Platform HD meanwhile is the default choice for tight spaces and doorways, offering a sturdier alternative to scaffolding or ladders.

IAS offers a full consultancy service for new customers, to source the perfect access platform and moving forward, offers six-monthly inspections, servicing and maintenance, meaning you can just get on with the job at hand.

"It is a real pleasure to hear repeat custom across many sectors. We take great pride in customer service, from our expert, technical know-how, to quick lead delivery times."

"In the near future, we are hoping to begin talks with a dealership of little truck booms. These are ideal for a variety of one-day applications from street work, signage, windfarms to pest control. Look out for our Spring demo road tour round the UK! We look forward to meeting new and existing customers then."

The company currently has an extensive range of used machinery for interested customers, including: JLG660SJ Articulated Boom, Aerial AL22 Truck Mounted, Multitel MJ201 Truck Mounted and Easylift R180 Spider Platform, please see this link for details: <https://iasales.co.uk/used-machines>

For more information, or to view the product range, please see the website below or ring Richard Martin directly:
M 07483 246878
enquiries@iasales.co.uk
service@iasales.co.uk
www.iasales.co.uk

SUPPLY AND SERVICE SPIDER PLATFORMS AND TRUCK MOUNTED PLATFORMS AND WILL HAVE THE PERFECT ACCESS SOLUTION FOR YOUR BUSINESS.

FIND YOUR PERFECT PLATFORM



GET IN TOUCH TODAY OR VISIT OUR WEBSITE TO VIEW OUR RANGE.
 T. 07483 246878 | E. ENQUIRIES@IASALES.CO.UK | W. WWW.IASALES.CO.UK



Protecting your investment, with award-winning, sustainable products

External wall insulation (EWI) is one of the fastest growing areas within the UK construction industry. For time immemorial, timber pattresses have been used to secure the fixing of satellite dishes through to utility boxes upon reinstatement. This was until SWIFIX: an Exeter-based company came up with a brilliant, innovative design range that bypassed traditional timber methods in 2016.

Paul Brown is the Director and brains behind the operations, with an extensive background in leadership in senior management, starting his career as a plasterer completing EWI.

SWIFIX is a multi-award-winning company that designs cutting-edge solutions for securing external furniture through External Wall Insulations (EWI). Since its inception in 2016, the range has been extensively extended, including a recent, exclusive design partnership with SKY telecommunications for a new product for securing cables and small pipework.

"We work with a broad range of customers from Architects, Local Authorities (LA's) to major contractors and system designers providing surefire solutions for securing external wall



furniture, through insulation and cladding, across a range of properties, including retrofit, new build, and the off-site modular sectors.

"Our unique design approach has brought robust solutions to market, for securing external furniture through EWI. These include: satellite dishes, rainwater goods, canopies, light alarms, signage, cables, pretty much any item that needs reinstatement," explained Paul.

The SWIFIX range are PAS2035-compliant for quality assurance and with easy installation and added cost-efficiency, it's easy to see why they are the leading choice for many customers.

The products are regarded as industry-leading, shortlisted for the National Energy Efficiency Awards (2016): with many other accolades recognising innovation and Excellence in the Energy Efficiency Sector, and more recently, The INCA Innovation Award Winner in 2021. The Insulated Render and Cladding Association (INCA)

is the recognised trade association for the EWI industry across the UK and awards are given for exceptional work in the industry. We asked Paul, in his own words what made SWIFIX products so special, "SWIFIX are recommended by many system designers as a product of choice, due to the fact that by using the solution and the way in which they are installed, they protect warranties and guarantees for the systems installed."

"The range provides a robust and watertight solution preventing ingress of water, which is damaging to systems. It truly offers a unique solution, unsurpassed by competitors, as it is suitable for many different formats and can hold greater weights. Overall, it is significantly cheaper than its competitors, offering considerable cost savings."

"I'm very proud of our green credentials: it is a very eco efficient-range, made from partially recycled plastics with all the parts are fully recyclable, along with the packaging, making our products very attractive in the age of sustainability."

For more information on this award-winning range, please see below:
T 01884 560477
info@SWIFIX.co.uk
www.SWIFIX.co.uk





INNOVATIVE PRODUCTS TO ENABLE FIXING THROUGH EXTERNAL WALL INSULATION

Our products are one of the most cost-effective solutions to enable the fitting of external furniture through external wall insulation and rain screen cladding, with the added benefit of being designed specifically for the job. Fully Pas2035 compliant for the future of retrofitting and the Modular housing sectors and the ideal solution for a longer term maintenance provision.

All fittings meet stringent technical requirements by preventing the compression of insulation and providing a watertight seal. They are also approved by many leading manufacturers and organisations developing modern methods of construction to support the requirement for new homes in the UK.



INNOVATIVE

A new cost-effective way to fit external furniture through walls and cladding



ROBUST

Super-strong to prevent insulation compression and provide a watertight seal



EASY TO INSTALL

Simple yet effective next generation solutions. See for yourself

To find out more, please visit www.swifix.co.uk, call **01884 560477** or email info@swifix.co.uk

Bluerun Ltd once again achieves excellence in the workplace

In this issue of Building Update, we are proud to announce that we have selected Bluerun Ltd as the recipient of our Commitment to Excellence award.

Upon reopening its doors in May 2020 after the COVID-19 pandemic, Bluerun Ltd has gone from strength to strength with its trusted brand now being known as one of the best in the joinery industry that has recently attracted big name brands turned clients, Starbucks and Waitrose.

2022 was a great year for the company in terms of revenue and new business. It has managed to maintain a strong conversion rate despite the current economic crisis and has found that enquiries for larger jobs as opposed to 'single window' types of jobs has been more popular especially from domestic clients which mimics that of its regular commercial clients.

Based in Wimbish, near Saffron Walden in Essex, Bluerun manufactures quality, bespoke joinery items and everything is made to order, nothing is 'off the shelf.' Dee commented, "We manufacture items for the commercial market from door and window packers, to shopfronts, reception desks, mainframes, pub doors, and years ago we even made a trebuchet for Stansted Mountfitchet castle!"

Of course, the company has the capabilities to manufacture most things from timber, hardwood, softwood, panels and sheet material. Some common items Bluerun Ltd manufacture for the domestic building market include windows, doors (exterior and interior), bi-folding doors, staircases, bespoke storage units and wardrobes, all of which come with the option of being sprayed in primer or to a finish.



Dee Newman, Finance Director at Bluerun Ltd presented the Commitment to Excellence Award

If you're looking for items made from both hard and softwood or even veneered and painted panels, Bluerun can reproduce an array of items including replacement sashes, where it can manufacture a brand new one on a like for like basis, so the mouldings will match. "Similarly, if a domestic client has found an image of a door, for example, that they would like us to reproduce, we can usually do that. Recently we

have started using a glass supplier that can supply us with stained glass effect units, complete with leading that has been aged and soldered, which looks absolutely breath-taking," added Dee.

Bluerun only produce purpose made joinery to client's drawings and specifications. Its unrivalled level of customer services means that free quotations are normally provided within 2-3 days or less, and the company can usually deliver a quick turnaround of any manufactured items required. And, because it has an experienced spray operative in charge of a modern spray paint and lacquer facility, articles can leave the factory in a fully finished state, ready for installation on-site.

What really sets Bluerun apart is that since its establishment it has never used computer aided machinery for any designs. Crafted to perfection, all items are finished by hand, drawings are prepared with pencil and paper, and everything that is manufactured by the team has been done so with the utmost attention to detail. It also has the ability to obtain colour matches of any paint colours for clients that would prefer something sprayed to a finish.

Apart from needing the item to fit out its workshop doors upon completion, there is no limit to any project that Bluerun will endeavour to take on. Inspired by a challenge, Bluerun will do its utmost to cater to all enquiries.

T 01799 599995
dee@bluerunltd.co.uk
www.bluerunltd.co.uk

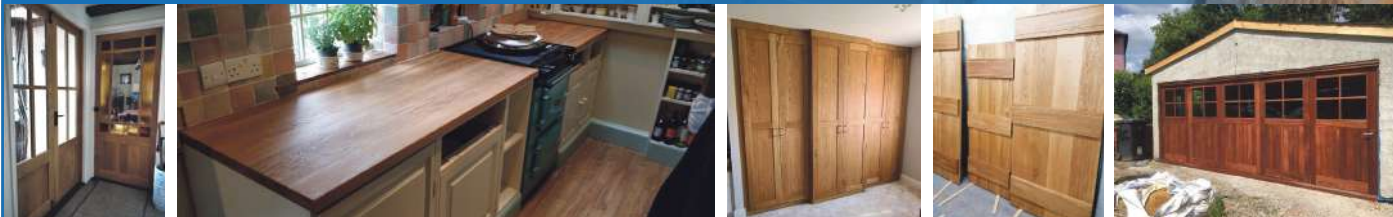


Bluerun Limited
quality bespoke joinery since 1991

QUALITY, CUSTOM MADE JOINERY



Bluerun Ltd have been manufacturing top quality, purpose made joinery for the domestic and commercial markets for over 30 years.



Please visit our website: www.bluerunltd.co.uk

Tel: 01799 599995 | Email: dee@bluerunltd.co.uk f [bluerunltd](https://www.facebook.com/bluerunltd) @ [bluerun_joinery](https://www.instagram.com/bluerun_joinery)

EXPLOSION PROTECTION & SPARK DETECTION SYSTEMS



Macclancy and Sons Ltd
SAFETY OUR PRIORITY



VIGILEX[®]
SAFETY PROTECTION
By **stir**

**RAPTOR
SPARK**

call +44 (0)7884 350337
info@macclancyandsons.co.uk

macclancyandsons.com

Hinges




GOLD & WASSALL
EST. 1790

Gold & Wassall have been manufacturing hinges for over two centuries, so it's safe to say we know what we're doing.

Our team of experts can design and manufacture almost any hinge, for any application.

T 01827 63391
sales@goldwassalhinges.co.uk
www.goldwassalhinges.co.uk

Project Management Software




elevateTM
Construction Made Easy

Elevate software can provide real-time updates, directing everyone on actions and this results in the team, prioritising their time and becoming more productive.

www.elevate-software.co.uk

Interior & Exterior Furniture




BESPOKE CRETE

BespokeCrete creates custom and bespoke furniture, outdoor kitchens, kitchen worktops, waterfall islands, patio sets, indoor table & bench sets, coffee tables, baths, sinks and so much more – that is fully waterproof, heat, stain and scratch resistant.

T 0800 061 4157
info@bespokecrete.com
www.bespokecrete.com

Deephole Drilling




UNISIG
DEEP HOLE DRILLING SYSTEMS

Our industry-leading customers around the world rely on UNISIG® deep hole drilling technologies for powerful, productive solutions and value. We engineer our machines to handle a complete range of applications, and support them with our high level of expertise and service.

www.unisig.com

Safety Consultancy




DCON
SAFETY CONSULTANTS

DCON Safety Consultants is committed to understanding the specific needs, goals, and desires of each individual client and project.

T +353 (0)1 611 1556
info@dconsafety.com
dconsafety.com

Sign Plaques & Architectural Castings




LEANDER
ARCHITECTURAL

Manufacturers and designers of high quality fingerpost signs, bandstands, bespoke canopies, Porte-cochère, blue plaques, noticeboards, cast signage, memorial plaques, street furniture, gazebos and much more.

T 01298 814941
www.leanderuk.com

Portable Buildings




ModConCabins
Manufacturer of Modular, Containers & Cabins

ModCon Cabins provides modern, affordable and bespoke modular and portable buildings for a multitude of situations, each one carefully crafted from new and used shipping containers.

T 0333 404 8822
modconcabins.co.uk

Eco-Friendly Plastic Products




KEDEL TRADE
ECO-FRIENDLY PLASTIC PRODUCTS

Kedel Limited is a family business, founded on ethical and ecologically sound principles.

We created our business to showcase the very best recycled plastic products, putting green, sustainable living at the heart of all our company decisions.

T 01282 861325
www.kedel.co.uk

Compliance Solutions



CheckedSafe was developed to provide simple and inexpensive compliance solutions that could be tailored to any industry.

Contact
T 01282 908429
info@checkedsafe.com
www.checkedsafe.com

Timber



The Company was founded in 1883 by Louis Vandecasteele. In those days, wagon making was the main commercial activity. Desiré Vandecasteele, son of the founder, then added a small sawmill.

Contact
T +32 56 43 33 00
vandecasteele.be/en

Machinery




With 35 years of experience in the access industry, we will find the platform most suited for your needs and supply at the best price achievable.

Independent Access Sales offer a complete service management facility throughout the UK.

T 07483 246878
enquiries@iasales.co.uk
iasales.co.uk




Landscaping Machinery



Eco Clipper offers large electric-powered mowers that help field managers minimise mowing costs for sports fields. Users report high productivity gains and appreciate low maintenance requirements, quiet operation and the ability to schedule mowing even under less favourable mowing conditions, such as early morning dew and wet autumn.

T +31 (0) 6 46 75 35 60
www.ecoclipper.com



Engineering & Consultancy



Bartels & Vedder is an engineering firm, specialised in floating and flood proof buildings and structures.

T +31 (0)6 422 398 53
www.bartelsvedder.nl



Waterproofing



TuffStuff® is the UK's premium designer, manufacturer and supplier of heavy-duty GRP waterproof flat roofing systems.

T 01977 680250
orders@tuffwaterproofing.co.uk
www.tuffstuff.co.uk


Fixings



Our Award Winning Solutions are one of the most cost-effective solutions to enable the fitting of external furniture through external wall insulation and rain screen cladding, with the added benefit of being designed specifically for the job.

T 01884 560477
info@swifix.co.uk
www.swifix.co.uk

Storage



Wallbed Systems offers a large range of wallbed hardware designs. We produce many different styles of wallbeds and ship all over the world.

Contact Jeremy Waller,
T +44 (0)208 704 5796
jeremy.waller@wallbedsystems.co.uk
www.wallbedsystems.co.uk



Streamline your fleet management and workload all for £1 per vehicle, per week!
Visit checkedsafe.com



Real-time tracking and reporting



Keep track of VED renewal dates

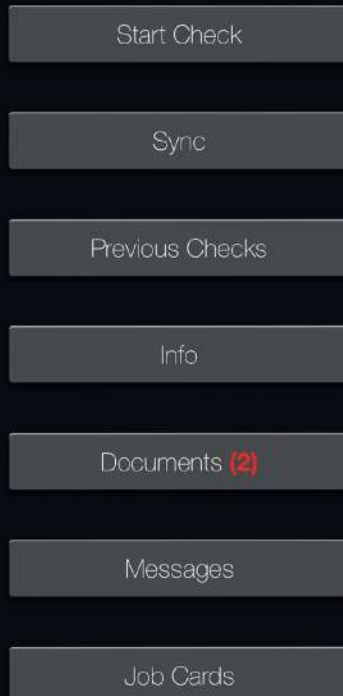


Unlimited users for the same cost



Vehicle & trailer MOT lookup enhancement

Come & visit us at the **2024 HSE Show**, we'll be on stand **4/D44!**



Find us on

