

INDUSTRIAL SOLUTIONS UK

ISSUE 672 • February 2024

www.solutionspublishing.co.uk www.facebook.com/solutionsuknews @Publishing_2016

CONTINUOUS REMOTE MONITORING

THE NEW REMOTE MONITORING SOLUTION FROM
INTERFACE FORCE

see pages 28-29

IN THIS ISSUE

Cirrus Research
see pages 6-7

Service Sealing Solutions
see pages 20-21

UNISIG
see pages 22-24

Davies Turner
see page 27

BUILDING UPDATE

Kedel
see page VI

 **SEMOTA**
Continuous Remote Monitoring

Whats Inside

- 3** Zehnder Group
Clean Air
- 5** Oliver Valves
Instrumentation Valves
- 8** British Encoder
Sensing & Control Devices
- 11** Eco Physics
Instrumentation Emissions
Monitoring & Gas Control
- 17** Camb Machine
Knives
Commitment to Excellence
- 20-21** Service Sealing
Solutions
Sealing Solutions
- 22-24** UNISIG
Machinery Excellence
Award 2024

Sponsored by



20-21

BUILDING UPDATE

- II** Gold & Wassall
New Website Launch
- V** Pandor
Bespoke Doors & Panel
Manufacturing
- VI** Kedel
Eco-friendly Plastic Products
Company of Choice 2024
- IX** Swifix
Fixings
- XI** DCON Safety
Safety Consultants
- XV** Modcon Cabins
Portable Buildings

Contents

Issue 672

On the Cover
Interface Force

Continuous
Remote
Monitoring



SEMOTA
Continuous Remote Monitoring

28-29

Editors Comments

Hello & Welcome to Issue 672 of Industrial Solutions UK!

The team at Industrial Solutions UK has been working extremely hard to bring you an issue that is full of innovative and exhilarating companies and we are very excited to share their success and achievements with you.

We have searched the length and breadth of the UK to bring you some of the most ground-breaking innovations and this month, we are overjoyed to be highlighting the activities of CAMB Machine Knives and Interface Force.

Firstly, we would like to focus on the accomplishments Interface Force who this month features on our front cover!

Secondly, we are featuring CAMB Machine Knives with the 'Commitment to Excellence' profile following their impressive performance over the years. For more information, turn to page 17.

I hope you enjoy reading this issue of Industrial Solutions as much as we have enjoyed bringing it to you. Happy reading and we hope to see you for the next edition!

Ian Hayward, Editor
INDUSTRIAL SOLUTIONS UK

Contacts

Editorial

Ian Hayward, Editor
T 0121 241 8788
info@solutionspublishing.co.uk

Accounts

Accounts Manager
T 0121 681 0935
accounts@solutionspublishing.co.uk

Production

Production Manager
T 0121 241 8788
production@solutionspublishing.co.uk

Industrial Solutions UK is based on the belief that our customers needs are of the highest priority and the utmost importance, with this in mind our team of highly dedicated staff work around the clock to make sure that those needs are always met.

For more information or format requirements, please see our [Media Pack](#)

For all advertising & sales enquiries, please contact Ian Hayward on: **0121 241 8788**, email: info@solutionspublishing.co.uk or visit: www.solutionspublishing.co.uk

FIND US ON:



The entire content of this publication is advertorial based. To place an advertorial or an advert, please call 0121 241 8788.

How much could you save by automating warehouse cleaning?

Images Sourced: Zehnder Group International AG, Gränichen

The warehouse of the future is already a reality today. In all sectors of the logistics industry, businesses are having to be smarter, faster, and more reliable than ever in order to fulfil consumer demands – with many using smart technology, IT and automation to keep up.

Automation also means new processes and many automated processes rely on sensors. And when these sensors become blocked, all of your productivity gains go up in a cloud of dust. You could just spend more time, effort, and money keeping your warehouse and stock as clean as possible.

Or you could simply automate your cleaning too.

All you need is a few specialist air purification units dotted across your premises. You can reduce dust in your warehouse by as much as 80% – and save up to 70% on your cleaning costs. And that's before you factor in the benefits of fewer returns, fines, and complaints from customers about dusty products.



Get automated cleaning + instant ROI with our smart air cleaners

Our CleanAir Max is an industry first: a high-tech industrial air purification system that reduces warehouse dust quickly and efficiently. A custom-built solution to suit your requirements, saving your business time and money, revolutionising work environments, and quickly paying for itself.

Equipped with next-generation smart technology, they can control your air quality through a central all-in-one dashboard and will allow you to monitor their performance from anywhere and any device. Offering the kind of transparency all businesses need to optimise their processes and cleaning.

Our smart solutions use real-time data and sensors to analyse your warehouse environment, anticipate changes, and adapt their cleaning power automatically. So, if a big delivery kicks up a lot of dust, Zehnder CleanAir Max will work harder to compensate.

Zehnder currently offers the most intelligent solution on the market with the Zehnder CleanAir Max. The air purification system guarantees maximum air quality, maximum energy efficiency, and maximum cost-efficiency.

An innovation you can't afford to be without.

You automate your processes. We automate your cleaning.

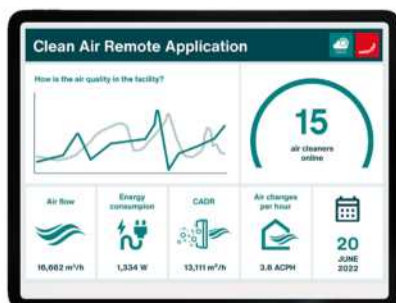
As industrial innovators, Zehnder understands what you need the warehouse of the future to look like.

That's why we build tailored clean air solutions around you: to help you get to a slicker, more productive future, faster.

**Book your site assessment with Zehnder today to learn more:
Book your site assessment now**

**Contact
T 0800 0430100
www.zehnder-cleanairsolutions.com**

Before installation		After installation	
Time for manual cleaning	84 h/ week	Time for manual cleaning	12 h/ week
Hourly wage	£16/ hour	Hourly wage	£16/ hour
Total cleaning costs		Costs of air purification units	£140/ week
		Total cleaning costs	£332/ week
		Total savings per week	£1,344 - £332 = £1,012
		Total savings per year	£1,012 x 52 = £52,624



Eradicate hidden cleaning costs with an automated air cleaning solution

The warehouse of the future is already a reality today.

Businesses have to be smarter, faster, and more reliable than ever – with many using smart technology and automation to keep up. But many automated processes rely on sensors. And when these sensors are blocked, all of your productivity gains go up in a cloud of dust. You could just spend more time, effort, and money keeping your warehouse and stock as clean as possible.

Or you could simply automate your cleaning too.

You automate your processes. We automate your cleaning.

As industrial innovators, Zehnder understands what you need the warehouse of the future to look like. That's why we build tailored clean air solutions around you: to help you get to a slicker, more productive future.

Book your non-binding assessment call today.

Ben Simons,
Head of Europe West
+44 7909 533878

[in](#) [f](#) [@](#) [v](#) [t](#) [#startwithcleanair](#)
info@zehnder-cleanairsolutions.com • www.zehnder-cleanairsolutions.com



The first mobile battery powered ultra-low temperature freezer

EMPOWERING EXCELLENCE. FOR A BETTER FUTURE.

LAUDA are proud to present the world's first mobile, ultra-deep chest freezer – the LAUDA Mobifreeze. Our commitment to reducing our impact on the planet, without compromising on reliability, is exemplified in our latest product.

The Mobifreeze guarantees safe and reliable deep-freezing. The mobile ultra-deep freeze chest freezer with active temperature control ensures that the cold chain is reliably maintained in intralogistics and for the inter-factory transport in road logistics. Thanks to excellent insulating properties, the ultra-deep freeze chest freezer is the perfect solution for transporting delicate and temperature-sensitive materials.

We are proud to announce that this chest freezer gets down to -86°C without the need of hazardous dry ice. As well as providing protection for the environment, the risks of personal safety are also alleviated.

The re-chargeable battery is another environmentally friendly feature of this unit. High performance and integrated into the unit, it only takes a short time to charge up and can run for hours at the lowest temperatures.

This unit also boasts modern refrigeration technology and high

insulation quality – vacuum panels with impermeable foamed polyurethane insulation provides high temperature stability with low power consumption. The interior consists completely of high-grade stainless steel and reliably prevents the cover seals from freezing on. The environmentally friendly, future-proof operation principle using natural refrigerants without dry ice provides independence from consumables and phase-change materials.

The Mobifreeze is also highly versatile in a range of environments including:

- **Intralogistics:** Including all processes from incoming goods and storage to internal transport and outgoing goods. Our mobile ultra-deep freeze chest freezer secures the cold chain during transport.
- **Cold Chain Logistics:** The transport of temperature sensitive goods poses major challenges for everyone involved. The Mobifreeze provides significant advantages in this segment of low temperature management through several ways. Transportation without dry ice, ideal product temperatures and active cooling.
- **Hybrid Use:** The bridging of transport phases is guaranteed by the active powered deep-freeze storage and excludes the health risks of continuous filling with dry ice. Flexible changing from storage to transport without transfer processes allows product-friendly logistics without the risk of damage and contamination.



If you're eager to learn more about what the Mobifreeze can do, or want to hear more about our other temperature control products that are helping the environment and a host of other industries including; biopharma, chemical, hydrogen, automotive and aerospace, to name but a few – don't hesitate to get in touch today using the information below:

Contact
T +44 (0)1780 243118
info@lauda-technology.co.uk

LAUDA

EXPERTS IN PRECISE TEMPERATURE CONTROL

Industrial & Laboratory Solutions

LAUDA Technology Limited provides class-leading expertise in pre-sales and post-sales for applications requiring precise heating and cooling solutions, ranging from -150 to +550°C. These solutions can apply to multiple product stages, from research and development through to pilot plant, full production lines and quality control. Working within a diverse range of industry segments, LAUDA Technology Ltd focuses particularly on automotive, aerospace, chemical, biotechnology, pharmaceutical, medical, digital printing and food and beverage application solutions. The primary focus is on robust and feature-rich solutions that allow operators to easily become familiar with the equipment, whilst giving customers a reassuringly low total cost of ownership throughout the equipment life.

Process Circulators

Chillers

Shakers

Incubators

Freezers

Viscometers

Tensiometers

Still

Contact Angle Measurement



Please email info@lauda-technology.co.uk or telephone +44 (0)1780 243118

Oliver Twinsafe Valves Supplied for MEG Injection Pump Systems

Oliver Twinsafe is to supply Double Block and Bleed pipeline valves for use on Monoethylene glycol (MEG) injection pump systems. MEG is a widely used hydrate inhibitor designed to reduce the risk of hydrate formation in pipelines that could cause blockages.

The order includes a batch of 2 1/16" API 6A 5000psi Double Block and Bleed valves in A182 F55 Super Duplex material that have been dynamically tested to meet the requirements of API 6A PSL level 3. In addition, the valve designs were pre-qualified to API 6A PR2 Appendix F, which involves multiple cycle testing at low, ambient and high temperature with zero leakage allowed across the valve seats throughout these cycles.

A number of Oliver instrumentation valves have also been ordered, taking the total number of valves supplied for this offshore project overall to over 300 with more valves in the pipeline.

For information on how Oliver Twinsafe can provide pipeline valve solutions for your project, telephone: +44 (0)1565 632636 or visit our website at: www.valves.co.uk

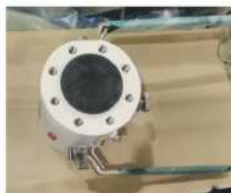


oliver valves
RELIABILITY UNDER PRESSURE

PEOPLE CREATING POSITIVE CHANGE WITH VALVE SOLUTIONS IN THE GLOBAL ENERGY SECTOR



With over 40 years of experience, Oliver Valves has grown to become one of the world's leading manufacturers of Instrumentation, Piping, Subsea and Hydrogen & Carbon Capture valves for the global energy sectors. Specialising primarily in the Oil, Gas and Petrochemical industries, the Oliver companies consisting of Oliver Valves, Oliver Twinsafe, Oliver Valvetek and Oliver Hydcovalves operate internationally across all regions. With teams strategically located to fulfil our mission of providing outstanding technical customer service, on-time deliveries and engineering innovation to all customers worldwide.



Please visit www.valves.co.uk

+44 (0)1565 632 636 **sales@valves.co.uk**

Oliver Valves Limited, Parkgate Industrial Estate,
Knutsford, Cheshire WA16 8D

Oliver Valves secure £890k order for Modular Wellsites

Oliver Valves secured a £890,000 order to supply Double Block and Bleed valves in Alloy 625 material with a reduced overall length of 240mm and are to be fitted to Modular Wellsite Packages.

Wellsite packages are integrated skid-based units that house all the equipment between the Christmas tree and the production header. The skids are expected to be installed near the respective wellheads to control the flow and pressure of oil or gas. They include; wellhead shutdown panels to control the wellhead valves, power distribution system with single phase and 3-phase power distributed to modules across the well site. A huge chemical injection system for flowline protection against corrosion, sampling pots to facilitate fluid sampling, and flow lines fitted with instrumentation valves that



measure temperature and pressures.

Oliver Valves are to manufacture 240 custom-made valves that are to be shipped to site over the next few weeks.

To find out how Oliver Valves can custom-manufacture your valves, contact us by telephone: +44 (0)1565 654089, email: sales@valves.co.uk or website: www.valves.co.uk

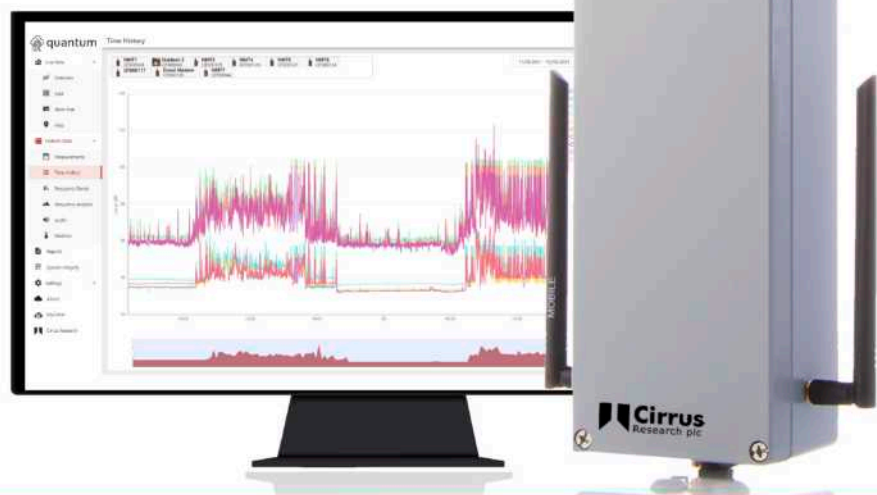
Monitoring your environmental impact couldn't be easier!

With Quantum Outdoor from Cirrus Research.

Get instant access to your **noise, weather, air quality and ground vibration data** with Quantum Outdoor from Cirrus Research, our first fully integrated cloud-based comprehensive environmental monitoring system.

Quantum Outdoor can work in any environment, including providing long-term remote noise and environmental monitoring for the construction and demolition industry.

Discover remote environmental monitoring:
bit.ly/QuantumOutdoor



Take sound to the cloud with Quantum from Cirrus Research



For more than five decades, health and safety practitioners have turned to noise monitoring equipment such as handheld sound level meters and personal noise dosimeters to assess noise levels in the workplace. However, with more and more businesses choosing to operate from multiple sites as opposed to across one site, it's possible that these more traditional methods of noise measurement and monitoring may no longer be the most efficient.

Quantum; the future of noise measurement Quantum Indoor from Cirrus Research is a powerful noise monitoring solution with built-in cloud connectivity, perfect for continuous occupational noise monitoring, identifying the source and type of noise that is occurring, and highlighting where noise control measures are required.

With this instrument, it has never been easier to measure and monitor workplace noise continuously and remotely across one or multiple sites.

The cloud technology that is built into the Quantum instruments allows health and safety practitioners to connect multiple noise monitors on one account, allowing for data from each noise monitor to be viewed and assessed on one platform. This creates a network of interconnected instruments, whose data can be viewed and analysed side-by-side, removing

the need to download information from separate handheld instruments one-by-one.

Additionally, Quantum indoor provides a constant ear to the ground, offering live and historical data round-the-clock that practitioners can access from anywhere, at any time and on any device. Whether users are on the other side of the planet to where the instrument is installed, or they're stood in the next room, the data is always accessible on demand via the online Quantum portal, powered by MyCirrus.

With a network of cloud-connected noise monitors, the need for users to be physically on-site to measure noise levels is vastly reduced. Cloud-connected monitors, such as Quantum Indoor, can be installed and left to do their jobs completely unattended. They can then be configured remotely to send users real-time alerts when noise events occur, which provides greater control to health and safety practitioners in the workplace.

With Quantum Indoor, you can:

- **Link multiple units** to form a cloud-connected network of noise monitors to make viewing the full picture of your workplace noise impacts easier.
- View your **live and historical data** in the Quantum portal anytime, anywhere around the world on any device.



- Create numerous **audio triggers and notifications** based on your personal set of conditions for acceptable noise emissions, and receive these notifications via email, SMS or push notification.
- Use the **frequency analysis** screen on the Quantum portal to further view and analyse your noise data and better understand the exact nature of the noise.
- **Create detailed reports** directly through the Quantum portal based on direct data captured by your Quantum Indoor units.

The Quantum Portal; powered by MyCirrus With the Quantum Portal there are no fixed fees or set up charges. With Cirrus Research, users are offered subscription packages that are flexible to fit in with your noise monitoring programme and your preferred level of usage. These flexible plans means that you have the ability to change your subscription up or down on a monthly basis.

Powered by MyCirrus, this portal is suitable for all Quantum noise monitoring devices, and can also be used with other instruments such as the Cirrus Research Environmental Noise Measurement Kits.

Subscription tiers available to users are:

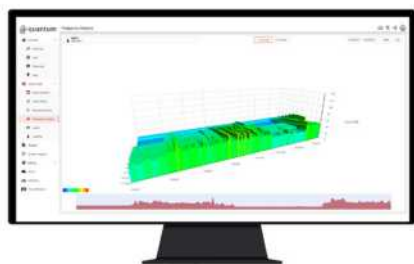
- **Standard subscription:** supplied as standard for 1 year and perfect for teams who need to analyse and report on noise events.
- **Pro subscription:** For large teams who need access to noise frequency data, customisable data views and detailed reporting.
- **Data retention only:** Perfect for anyone who does project work and needs to store their data between jobs.

Complement your existing noise management programme

With the ability to provide a greater level of control, make more intelligent decisions and reduce the need for unnecessary travel between multiple workplaces, Quantum Indoor is the perfect cloud-based noise monitoring instrument to complement your existing noise management programme.

Say 'hello' to Quantum today and speak to the Cirrus Research noise experts to learn more.

Contact
T +44 (0)1723 891655
sales@cirrusresearch.com
www.cirrusresearch.co.uk



Model A36R Absolute Encoder

The Model A36R Absolute Encoder is designed for high performance in a compact mechanical package. The use of blue LED and reflective technology along with excellent shock and vibration ratings make it a highly versatile encoder. Available with bore sizes up to 10mm and a wide selection of flexible mounting options, with BiSS C or SSI communication protocols, it is especially suited to applications where an encoder needs to retain position information after power-off scenarios.

The Model A36R absolute thru-bore encoder offers:

- Up to 22-bit single turn/24-bit multi-turn resolution
- Thru-bore or blind hollow-bore styles
- BiSS C and SSI communications
- 36 mm diameter housing, 25.4mm (1.000" depth)
- Operating temperature range of -40°C to 120°C
- Optional battery/backup power interface for data retention in the absence of primary power

Reflective Technology

The central component of the reflective technology architecture is an innovative system-on-chip optical device. This device integrates a blue LED emitter and a sensor into a single package, accompanied by a range of on-chip programmable encoder functions. This technology offers significant benefits



over the traditional optical transmissive approach:

- **Compact Design:** Unlike transmissive technology, which necessitates two separate PCB assemblies, this technology requires only a single PCB assembly. This reduction in hardware complexity and space requirements is a notable advantage.
- **Signal Clarity and Precision:** The inclusion of a blue LED with a short wavelength in the integrated package enhances signal contrast and minimizes jitter. Furthermore, the proximity of the emitter and sensor within the same assembly significantly reduces optical crosstalk.
- **Versatile Position Detection:** Unlike many magnetic encoders that rely on magnets positioned at the end of the encoder shaft to detect position, this technology enables off-axis position detection. This versatility allows for a wider range of mounting options, including those suitable for thru-bore style shafts.

T +44 (0)1978 262100
sales@encoder.co.uk
www.encoder.co.uk

Gromtec Europe: The SIMONBOX



Why can you never find a power socket where you require one? The SIMONBOX is an IP66 rated (Weatherproof) single socket floor outlet, designed for installation in hard floor and patio areas, which have an occasional power requirement. When closed and not in use the unit achieves its IP66 rating. When open and in use, it is IP20 rated. The SIMONBOX is installed in a wide range for installations including Tennis and Football Stadiums, Airports, Car Showrooms, Department Stores and John & Janes back garden! No

more trailing cables and trip hazards, the SIMONBOX delivers power to where it is required. Available in either a stainless steel or brass finish the top section is available in a range of socket options. There are 2 back box options for screed or raised floor installation, such as decking.

Available through your local electrical wholesaler or online. For more information, please visit: www.simonbox.co.uk or call: 0203 286 7949.

Pushing the Limits of Motion Control

Encoder Applications

- Conveyor Systems
- Autonomous Vehicles & Robots
- Material Handling
- Stagecraft
- Warehousing
- Food & Beverage
- Printing, and more...



Find the right encoder for your application.

British Encoder Products Co. is the European Branch of the Encoder Products Group - Home of the Accu-coder® and Accu-CoderPro® Brand, a worldwide manufacturer of motion sensing and control devices with over 50 years of experience.

ACCUCODER/ACCUCODERPRO™

www.encoder.co.uk



**BRITISH
ENCODER
PRODUCTS COMPANY**

Ocean Power

Transform into the cost-efficient and sustainable future



Energy Storage Systems



Subsea-UPS



Standard Batteries



Vehicle Charger and



Batteries

Li-Ion PowerPack™ - Underwater power solutions

Highly reliable, efficient and safe Li-Ion batteries
Made for harsh offshore and subsea conditions
such as offshore Oil & Gas, scientific and
AUV or ROV equipment

SubCtech GmbH
www.subctech.com
info@subctech.com



INDUSTRIAL VENTILATION SYSTEMS

DESIGN, SUPPLY, INSTALL, TEST AND SERVICE

We engineer industrial ventilation systems that integrate seamlessly into your facility and provide healthy clean air to workers and operatives, along with many other benefits of a clean air environment.

DESIGN

Clean Air Environmental offer a free on-site consultation



SUPPLY

We supply all required plant and system components



INSTALL

Providing both Mechanical and Electrical Installation



TEST

Our on-site ventilation system testing is carried out to BOHS P601

SERVICE

We work with all manufacturers and can provide spares and components

www.cleanairenvironmental.co.uk

Clean Air Environmental Ltd. COZICOT, 156 Coleshill Road, Water Orton, Birmingham B46 1QE

ECO PHYSICS AG develops new three-channel chemiluminescence analyser (NO/NO₂/NH₃)

ECO PHYSICS AG offers innovative analytical solutions for measurement tasks in the fields of environment, health and process control. Using its vital expertise and technology to contribute towards environmental preservation, human health, and industrial innovation, ECO PHYSICS' interdisciplinary research and development team work tirelessly to deliver the best customer orientated and tailor-made products and services for the industry.

Founded in 1990 through a management buy-out, ECO PHYSICS stands strong today as an independent Swiss shareholder's company with an active board of members who are committed to the future growth and success of the company. We spoke to Dr. Grischa Peter Feuersänger, Head of Sales & Marketing who explained how the past 12 months have fared.

"We have received a positive recovery post pandemic. Many public projects were reopened which generated a lot of opportunities for new references. The war in East Europe is a new tough challenge to overcome, especially for companies that rely almost completely on importing parts and exporting their finished products. But the main challenge for all of us has particularly been the manufacturing costs, shipping routes and exchange rates. Since 2022, we have used this time to expand our product portfolio and modernise our production line. New staff has been hired for production and R&D, and we have rearranged the



supply chain due to the rise in production costs. We have adapted our yearly forecast to cater to this, we know it will be hard, but optimisation is our current goal."

Knowing there is no quick fix to economic changes, ECO PHYSICS is determined to continue innovating and has developed a new three-channel analyser based on chemiluminescence. As an upgrade from the The nCLD AL2, The nCLDAL3/8555 CY analyser is the next generation in high precision nitrogen oxide measurement. Unique in speed and reliability, the nCLDAL3/8555 CY is modular designed and capable of simultaneously NO, NO₂, NO_x, NH₃ and NOX-Amines. The new and intuitive graphical user interface also individually displays and connects to other instruments' data.

Overall stability and reliability are lifted to a new level. The optional electro-mechanical

bypass system balances out even the fastest of pressure variations occurring in the sample flow. Furthermore, the analyser is adaptable to numerous non-standardized applications and the calibration of the unit runs quickly and automatically with all necessary data available anywhere at any time. Its user friendly, compact, modular, and intelligent hosting its own CPU whilst enabling interaction with other CPUs by BUS-communication.

Additionally, ECO PHYSICS has also been developing upgrade kits for all its existing products to help counteract some of the problematic complications the supply chain has caused. "We have used this chance for some substantial upgrades in hardware, software and gas flow controls," added Dr. Grischa Peter Feuersänger.

Going forward, ECO PHYSICS is excited to continue working on optimising production workflow whilst simultaneously expanding its current portfolio and developing new technologies.

In closing, we asked Dr. Grischa Peter Feuersänger how the company felt receiving our award. He responded, "We are extremely honoured to be nominated, thank you."

T +41 55 220 22 22
info@ecophysics.com
<https://www.ecophysics.com>

ECO PHYSICS nCLD "Facelift" boxed solutions AL, AL², EL S, EL, EL²



Measurement of
NO • NO₂ • NO_x

- Compact analyzer with external or integrated pump
- "Toggle mode" NO₂-feature for One-Channel instruments
- Intuitive graphical user interface
- Internal data logger and status recorder
- Remote operation/control, Power DOWN/UP
- USB, HDMI, LAN/WLAN, Bluetooth, RS-232, Analog I/O

The one- and two-channel chemiluminescence based NO_x analyzers of the nCLD "Facelift" box-solution analyzers detect NO, NO₂ and NO_x at concentrations ranging from 5ppm to 5,000ppm with minimal detection limits averaging from 0.4ppb to 0.5ppm. They hereby focus on two main application areas, Ambient Air (AL, <50ppm) and Emission/Process (EL, <500ppm; EL S <5,000ppm) monitoring. The one-channel nCLD AL, EL and EL S feature an external pump, while the two-channel nCLD AL² and EL² include an internal pump. The nCLD "Facelift" boxed solutions consist of five, fixed and pre-configured analyzers. The nCLD AL (Ambient Level) and EL S/EL include a standard NO/NO_x measurement, with an optional NO₂ add-on, while AL² and EL² include, due to the two-channel set-up, a standard NO₂ detection. The slightly modified front panel has been equipped with an additional Power-button and a new internal PC. Additionally, are all nCLD-models capable of a remote power down/up including a failsafe feature.



ECO PHYSICS AG · POB · CH-8635 DUERNEN · TEL. +41 55 220 22 22 · FAX +41 55 220 22 55 · E-MAIL info@ecophysics.com · [WWW.ECOPHYSICS.COM](http://www.ecophysics.com)

Trace heated 'v' tepid water

When handling hazardous materials in factories, laboratories, or other workplaces, there's a lot of factors to consider in assuring personnel safety, with much of industry still assuming that a trace heated shower will deliver tepid water this is simply not the case. Trace heating only protects the shower from freezing.



ANSI 2014 states that the water temperature delivered by safety equipment should be 'tepid'. Tepid is defined to be between 60°F (16°C) and 100°F (38°C). Many COSHH sheets state the requirement for a casualty to remain under a shower for at least 15 minutes to be washed off satisfactorily. The necessity to therefore provide 15 minutes or more of tepid water is absolutely vital as getting doused in cold water can not only cause thermal shock it will actually close the pores thus trapping the contaminants in the skin.

A tank shower is possibly the most effective solution to ensure tepid water is guaranteed as by the very nature of being able to store water means operationally it is not affected by interrupted or low water pressure. Regardless of ambient or incoming water

temperatures the shower will deliver a guaranteed 15 minutes of tepid water at 76 litres per minute as recommended by ANSI because the stored water can be effectively managed.

More sophisticated methods are now available to enable the tank to be heated but to include a visual water temperature display, water temperature alarm and power failure alarm.

Aqua Safety Showers International Ltd is offering no obligation help and advice for companies both large and small on how to operate within the latest ANSI Z358.1-2014 recommendations.

Please visit:
www.aqua-safety.com for contact details and more information.

AQUA Safety Showers, experts in our field

When it comes to the safety of workers out in the field, we are the people to contact when it comes to emergency safety showers and eye wash stations. It isn't just about the end product. We will recommend and advise you on the best safety shower solution to suit your requirement. As there is no one-fits-all approach we have the flexibility to adapt or modify our units in our manufacturing facility in Great Britain.



please get in touch with our dedicated sales team today.

Our range of emergency products and equipment offer protection against serious injury and are all built to exceed ANSI/EN safety standards.

While we hope there is never the need for your safety showers to be used, having one is imperative on site should be working around harmful substances.

Our goal is to create essential pieces of equipment that become the standard in every laboratory and facility that uses harmful substances.

Are you properly prepared in case of an emergency?

Aqua Safety Showers can keep your workers safe with our wide range of products and units available. For a bespoke quotation or free site survey,

Our highflyer is our TS1500 unit (<https://aqua-safety.com/product/1500-tank-shower>). This unit guarantees over 15 minutes of tepid water without the need for a mains water supply. It can be situated indoors or outdoors and in either hot or cold climates. Temperatures are maintained around 18-20°C when heaters (and chillers) are fitted.

T +44 (0)1942 318096
sales@aqua-safety.com
www.aqua-safety.com

www.facebook.com/aquasafetysafetyshowers
www.linkedin.com/company/aqua-safety-showers-international-ltd
www.youtube.com/channel/UC2leWZzOIQDO-QiWVGyYRw

Odour Control & Biogas Cleaning Units

Anua Clean Air: Air pollution control specialist

Anua Clean Air UK Ltd are a specialist Air Pollution Control company with expertise in the field of biological treatment of air and Biogas. Anua are established leaders in the fields of high performance, low-cost emission abatement primarily based on our Patented Biofiltration and Bio scrubbing technologies.

Our Monashell™ and CrumRubber™ use recovered materials as the critical filtration component. The unique properties of these materials enhance capture and treatment which in turn provides multiple environmental benefits in terms of Circular Economy, Carbon Footprint (low water and energy requirement and no consumables) and removal of harmful atmospheric pollutants.


During the past number of years along with its parent Company Anua Clean Air International limited and Italian Sister company Air Clean SRL we have been very active in the UK, Ireland and in overseas markets including Italy, France, the Middle East, China and the US. International Reference projects include Dual Pass Monashell Installations in Riyadh, Jeddah, Laguna



Lake in the Philippine's, Coimbatore in India, and Sindos in Greece. For our new CrumRubber technology we have supplied new installations in the Canary Islands, China, Oman and UK and Ireland. We are also currently working with Air Clean USA on the delivery of a number of new installations for the US market.


Anua Clean Air International also specialise in Equipment Health Checks and process optimisation and media replacement services. Over the past number of years we have continued to perform System Health Checks and media replacement services on the many hundreds of Worldwide Monashell Installations.

www.anuacleanair.co.uk



ANUA Clean Air
U.K

Tel: +44 1450 420017
www.anuacleanair.co.uk





Leader in Odour Control and Biogas Cleaning Units

Leader in Odour Control and Biogas Cleaning Units

"Anua Clean Air UK offer proven, patented clean air bio-technologies, which provide best-in-class process performance with the lowest utility and life cycle costs"

Mónashell - Mónafil - CrumRubber - Mónasorb
- Skid Mounted Odour Control Units -
Media Replacements - OCU Health Checks





A Grupo Antolin Company

CML INNOVATIVE TECHNOLOGIES

WHERE INNOVATION COMES TO LIGHT



LED LAMPS



CUSTOM BUILD



CONTRACT ASSEMBLY



PANEL MOUNT INDICATOR



CUSTOM SOLUTIONS



TOWER LAMPS



KITTING FACILITY



STOCK HOLDING

Contact CML customer service **now** to discuss your requirements or for Stockist information.

CML Innovative Technologies Ltd.

69/70 Eastern Way, Bury St Edmunds,
Suffolk, IP32 7AB, United Kingdom

Tel: +44 (0) 1284 714700 email: uksales@cml-it.com

www.cml-it.com



Noise, Vibration & Air Quality

ACCON UK

ENVIRONMENTAL CONSULTANTS



We are one of the UK's leading niche environmental consultancies, specialising in air quality, noise, vibration, lighting, flood risk assessment, contaminated land, daylight & sunlight assessment and Environmental Impact Assessment (EIA). Our standards of EIAs, technical reports and planning proposals ensure you get the most robust and reliable results. ACCON UK's wealth of experience and efficiency enables us to produce cost-effective air quality, noise and EIA reports for our clients. We maintain a wide range of noise, vibration and air pollutant measurement equipment to ensure the very best outcomes for our clients.

We offer focussed solutions for all our clients provided by our team of experts, all of whom are specialist environmental assessment consultants and are up-to-date with the most relevant and latest revisions to the planning system.

Contact ACCON UK today to discuss your individual requirements with one of our consultants.

Our range of sector expertise includes:

- Major Infrastructure Projects
- Transportation – Road, Air and Rail
- Residential and Commercial Development
- Sports Stadia and Recreational Facilities
- Industrial
- Energy and Wind Farm Developments
- Mining and Quarrying
- Petro-Chemical



Please visit our website www.accon-uk.com

Telephone: +44 (0)118 971 0000 | Email: enquiry@accon-uk.com

EFFICIENT - SCALABLE - ROBUST

Biopharma Group Exclusively Offers

PRODUCTION SCALE FREEZE DRYERS

throughout the UK, Ireland
and France



FROM BENCHTOP R&D
TO LARGE THROUGHPUT PRODUCTION,
WE HAVE A RANGE OF FREEZE DRYER MODELS

USED EXTENSIVELY WITHIN ISO 13485 ENVIRONMENTS, TO ACHIEVE PHARMA & BIOTECH CUSTOMER NEEDS



CONTACT A PRODUCT SPECIALIST
VISIT
www.biopharma.co.uk



BIOPHARMA GROUP

offers you the

LYOCONSTELLATION + LYOGALAXY SERIES

of aseptic freeze dryers by ATS Life Sciences



DESIGNED TO MEET THE QUALITY & PRECISION NEEDS OF
THE PHARMACEUTICAL & BIOTECHNOLOGY INDUSTRIES

...with throughput capacity,
product efficacy,
cleaning validation,
& data integrity 21 CFR Part 11
needs in mind



Contact our specialists to discover more
www.biopharma.co.uk

TO LET



Hanover House

St. Asaph LL17 0LT

- 24/7 Access
- On-site parking
- Available individually or as suites
- Excellent facilities including **FREE** use of the conference room
- Convenient location **adjacent to the A55 motorway**
- FREE access to shared kitchen and facilities
- Individual offices available from **just £25 per week**
- **Special deals for Start-Ups**
- **Opportunity to expand** your business as required
- Attractive gardens
- Disabled access, parking and facilities

Property Location

Hanover House is situated in the picturesque City of St. Asaph and positioned close to the A55 North Wales expressway.

The business parks at Abergele & St. Asaph plus Rhyl and Denbigh town centres are all within a 15 minute drive of Hanover House. Chester is just a 30 minute drive away.

Restaurants, public houses, shops and hotels are all within a short walking distance of the property.

MAKE AN ENQUIRY

To enquire about the current office availability at Hanover House, please contact Jean Barlow directly on **07789 348817** or email jean@hanoverbc.co.uk

Hanover Business Centre provides us with an ideal base and a perfect location to service our North Wales clients from. We've been tenants for several years and have benefitted from moving between office space within the building as our business has grown.



Online Business For Sale

BUSINESS FOR SALE



Itchy Horse Company Ltd was formed not only to supply the best solutions but also to offer expertise and advice with no obligation, as we fully understand the distress caused by this condition to carer/owner and horse.

We have extensive experience with Sweet-Itch, owning three horses with the condition, and also having many years as manager of The National Sweet-Itch Centre giving help and advice.



Please call 01352 840333/07825 152490, email info@itchyhorse.co.uk or visit itchyhorse.co.uk

Hand protection that is a cut above the rest

Since the company was established in 2020, its mission has been to bring change to the end-user experience in selecting and buying industrial gloves, gauntlets and sleeves (PPE). As the designer and manufacturer of such an innovative range of quality industrial hand protection that is available for all industrial applications, Manosun is breaking the mould of traditional offerings with a core range of hand protection that are safe and the perfect fit for anyone that requires PPE.

"We believe our services outweigh that of any competitor because as well as our core-range of products, Manosun offers a quick turnaround product

development process where we evaluate the end-user's processes and tweak/develop a more fit for purpose product. As well as our FOC site-survey to enhance any risk assessment, we also add volume to any work operating procedure," stated Steven Patterson, Country Manager UK & Europe.

Manosun breaks its products down into three category's that ensure excellence, longevity and value for money. Each product is made to the highest 'Quality' meaning only the best quality materials and yarns are used to ensure a long-life product that can be used over again without wear or tear, and that also give comfort to all users. 'Service' – Manosun prides itself on its quick turnaround service whether than be an order process, sample request, or site survey. Lastly, 'Value,' Manosun believe that not only does the cost-in use value matter but also its business values too. "We work closely with our distributors and end-users to nurture them in a partnership arrangement that supports each other's enterprise," added Steven.

Manosun's current portfolio consists of a large range of hand protection products where it works with all end-users including globally known brands such as Nissan, JDR Cables, and SUEZ. Also part of its service, Manosun will survey any work environment, advise on the correct

level of hand protection needed or if needed, and will even develop a brand-new product to the exact requirements of the customer.

For the past 12 months, Manosun has been concentrating on the growth and awareness of the brand. It's initial approach to 2023 was to increase the awareness its products and dedicated a quarterly plan that would see them employ two new field sales persons in Q1. The first started on May 22nd and the second will start in the following six months.

From there, the plan is to keep moving in an upwards trajectory for the rest of 2023 and beyond. "Moving forward, we will continue to grow our range of products. In 2023, we launched the Manosun BASIC range (not yet on the website). This is a range of gloves that contain rPET created from recycled materials (Plastic) to make industrial Polyester, each pair of gloves contains on average 36% recycled materials. Having a commitment to excellence means everything to Manosun, which is why we work with the BSIF as well as local networking and support groups NEAA (North East Automotive Alliance) and the AMF (Advanced Manufacturing Forum) to learn and adopt Best Working Practise from local industry as well as National and European requirements as a PPE provider/manufacturer currently instructed by the BSIF."

Contact Steven Patterson:
T +44 (0)7468 904409
steven.patterson@manosun.co.uk
www.manosun.co.uk



OUR GLOVE RANGE INCLUDES

ARC

Primarily developed for electrical ARC flash protection, our range of gloves offer many other benefits.

IMPACT

Designed to protect the user's hands from injury if their grip was to slip or tools that are being used fall.

CUT

A range of industrial cut-resistant gloves that offer comfort to the user and good electric insulation.

SPECIALITY

Our specialist range of gloves protect the user in various environments including cold and chemical-based.

GENERAL

The general handling glove range has been made from the best quality materials.

BASIC

A quality economy, sustainable range to compete in a market of own-brand price-fighter gloves.

THE FIRST POINT OF PROTECTION

Manosun Hand Protection

A manufacturer and designer of industrial safety products

- Manosun was created during the 2020 global pandemic when industry took an all-time low in productivity
- Located in South Tyneside, the co-creator of the brand has over 16 years of industrial product development and 15 years within manufacturing including Health & Safety
- Our aim is to target the huge UK manufacturing sectors as well as power generation and conservation and offer a quality service, product and development ability, not all solutions can be found off the shelf
- We work with your traditional distribution supply chain so no need to work outside of any contractual obligations, your are free to develop and select your PPE requirements
- Manosun Ltd is also a member of the BSIF a sign and seal of quality and products that fulfil all UK and EU requirements of test and design.

Talk to Manosun for all of your hand protection needs.

Tel: 0191 300 8699

Email: admin@manosun.co.uk

Web: www.manosun.co.uk

f www.facebook.com/manosun

in www.linkedin.com/manosun



MANOSUN

BUILDING UPDATE

ISSUE: 672 February | www.solutionspublishing.co.uk



GOLD & WASSALL
QUALITY HINGES FOR OVER 200 YEARS

MAKING HINGES SINCE 1790
100% UK MANUFACTURED

Gold & Wassall are the UK's No.1 manufacturer of hinges. We provide a fully comprehensive manufacturing service, which enables us to offer any hinge, for any application.

All our hinges are manufactured at our premises in Tamworth, UK.

We have a huge stock range, all of which are available for immediate dispatch.

Continuous Hinges

Butt/Backflap Hinges

Lift-Off Hinges

Heavy Duty Hinges

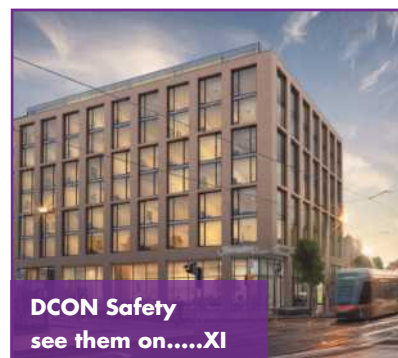
Special Purpose Hinges



Please check our new website:
www.goldwassallhinges.co.uk
Email **sales@goldwassallhinges.co.uk**
Telephone **01827 63391**



Fisher & Company
see them on.....IV



DCON Safety
see them on.....XI



MacClancy & Sons
see them on.....XIII



LS Products (Ecoclipper)
see them on.....XIV



Checkedsafe
see them on.....XVI



www.facebook.com/solutionsuknews |



[@Publishing_2016](https://twitter.com/Publishing_2016)

Exciting News: Gold & Wassall's new website is live!

Here at Building Update, we are thrilled to announce the launch of the brand-new Gold & Wassall Hinges website!

The new website has been a long-term project for the team at Gold & Wassall, who after months of hard work and dedication are overjoyed to see this project finally over the line.

Explore the updated design, user-friendly interface and exciting new features all designed to enhance the user experience.

As well as now making it possible to download CAD drawings and 3D models of each hinge from the website, Gold & Wassall has also introduced a new 'Hinge Finder' that allows the user to narrow down suitable hinges based on their required dimensions. Simply choose your hinge type, hinge length, open width, thickness, and pin diameter, and your results are shown instantly. This will help customers utilise the full range of hinges, and show hinges that they might not have found or considered previously.



You will find on the new website a clearer and cleaner way to scroll through their vast range of hinges from continuous/piano, butt & backflap, standard, lift-off, and special purpose to heavy duty and bespoke made to order hinges.

Furthermore, using the company's automatic section on the website that contains eight lines of automated machines, Gold & Wassall is able to make hinges quicker and to almost any length. The company also maintains the specialist tooling for these machines which can complete multiple operations in each press.

Please note: Gold & Wassall is the only hinge company whose hinges are UK made and all of Gold & Wassall Hinges' stock is available for immediate dispatch.



Gold & Wassall has been manufacturing hinges for over 200 years using a mixture of tried and trusted methods along with modern technology. The launch of its new website comes timely as the company looks to continue its success into 2024 providing unrivalled levels of customer service.

Based in Tamworth, Staffordshire, Gold & Wassall manufactures all its own hinges out of its in-house purpose-built factory where it also ensures that every product goes through a rigorous testing procedure and receives the upmost attention to detail before being sold. The company prides itself on its customer service and aims to treat every customer fairly and with respect.

The new website also keeps customers informed on the latest news, events and promotions with regular blog posts. The hard-work and expertise that has gone into the creation and deployment of new website will be instrumental in bringing Gold & Wassall's vision for the next few years to life.

Explore the new website and discover all that Gold & Wassall has to offer below:
<https://www.goldwassallhinges.co.uk/homepage>



GOLD & WASSALL
QUALITY HINGES FOR OVER 200 YEARS

The launch of our brand new website

Gold & Wassall Hinges has established itself at the forefront of the industry since its inception over 200 years ago. With its manufacturing facilities situated in Tamworth in Staffordshire, Gold & Wassall provides an impressive range of services for design, production and manufacture of hinges, all produced in house and distributed throughout the whole of the UK. Boasting an enviable reputation within the industry, the company has positioned itself firmly as the UK's number one manufacturer of hinges.

Gold & Wassall has provided its services to various customers throughout its years in operation and serviced customers from construction to engineering companies. With a proven track record of quality, reliability and durability, Gold & Wassall ensures it maintains complete control over the design and high quality of its goods.



Please check our new website: www.goldwassallhinges.co.uk
Email sales@goldwassallhinges.co.uk | Telephone **01827 63391**

Dolwin & Gray

Established 1969



Professional, fully trained & qualified Tree Surgeons & Landscapers in & around London & the South East

Hedge, Copse & Woodland planting
(Transplants to semi-mature)

Cultivation & Seeding Paddocks etc Turfing

All aspects of Tree Work, Surveys and Reports to BS5837:2012 Trees in Relation to Design, demolition and construction – Recommendations

Tel: **01892 853232** • Fax: **01892 853434**

Email: enquiries@dolwinandgray.co.uk

www.dolwinandgray.co.uk



Natural Roofing Slate priced to help YOU win projects

RoofingSlateDirect.com

High Quality Slate at Low Prices!

Quick & Easy Website Ordering

UK Wide Delivery & UK Technical Support

BS EN 12326-1:2014 to A1, S1, W1 & T1

Good match for Welsh Slate or Ballachulish Slate at a much lower price

Try us on your next slate roof project and find out what you've been missing!

www.RoofingSlateDirect.com

T : 0333 323 1768

E : contact@roofingslatedirect.com

Sign Plaques & Architectural Casting Feature

BESPOKE STRUCTURES, COLUMNS & CASTINGS ARE A SPECIALITY!



TOP QUALITY & EXCEPTIONAL SERVICE FOR OVER 140 YEARS...

Manufacturers and designers of high quality fingerpost signs, bandstands/gazebos (restoration & new), canopies, balconies, signage, plaques, street furniture and much more. Our restoration consultancy is regularly used by local authorities and other bodies looking for advice and assistance – particularly with bandstands, railings and park features.

- Bandstands, Balconies, Verandas, Canopies etc.
- Bronze & Aluminium Plaques
- Wayfinding Solutions
- Restoration Work
- Architectural Castings
- Custom Columns & Spandrels
- Blacksmithing & Fabrication Services

01298 814941 • sales@leanderuk.com

Please visit **www.leanderuk.com**



Manufacturers of Fine Structures and Signage Solutions

Elevate your business to the next level

In this issue of Building Update, we have selected Elevate Software as our Company of Choice.

Construction project management can often be arduous, requiring smooth communication flows between chief architects, main contractors, chartered surveyors and sub-contractors. With stringent health & safety and contractual laws, alongside urban planning laws and biodiversity considerations, it is essential that project management runs smoothly to avoid undue delays in constructions.

Steve McGowan is the manager of Elevate Software, with extensive prior experience working in construction, from apprentice joiner, to sub-contractor, contractor manager and consultant, under his belt. During his working experience, he noticed that the information flow was key to successful project completion and conversely, the

opposite caused frustrating delays.

"Elevate software can provide real-time updates, directing everyone on actions and this results in the team, prioritising their time and becoming more productive."

"Elevate Assist is a standalone software solution connecting everyone under one digital hub and is exceptionally user-friendly."

"Busy professionals are asked for requests for information (RFI's) daily on multiple projects and with higher management now often working remotely, they need updates quickly in real time, at the touch of a button. Elevate Software does all that and much more," explains Steve.

This smart software design was first market tested in 2007 and was shortlisted for Best Newcomer to Show at The Interbuild Trade show at the NEC to impressed industry professionals.

For more information, contact Steve McGowan on the details below:
T 01962 761693
M 07824 724377
steve@elevate-software.co.uk
www.elevate-software.com



elevateTM
Construction Made Easy

THE COMPLETE PROJECT MANAGEMENT SOFTWARE

**90% OF THE PROCESS
AUTOMATED | DESIGN
FINANCE CONSTRUCTION
HEALTH & SAFETY
CONTRACT
ADMINISTRATION
PROGRAMMES
COLOUR CODED
GUIDANCE**



Please visit www.elevate-software.co.uk,
call 01962 761693 or email
steve@elevate-software.co.uk

Lighting & Electrical

Belisha & Refuge Beacons

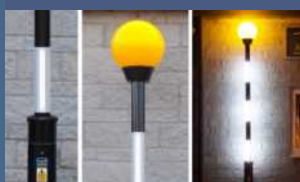
AmberGL08

8W LED Beacon with amber globe and aluminium gallery with 3No. reflective white bands. Reliable and long lasting



OlympiadIPB

30W total LED Beacon High visibility with illuminated and reflective white banding



Lodestar

LED Refuge Beacon 12W with Pearl Globe and Traffic Grey Gallery



Sentinel26

Refuge upgrade 26W total High Visibility LED Beacon with 2No. Illuminated reflective white bands



Full range in stock - Complete Beacons and accessories - Courtesy Shields, LED Crossing Spotlights, Bracket Arms and retrofit spares such as Reflective White Bands etc



Contact our Sales Team now on **0333 666 2122**

or email info@fisherandcompany.co.uk

Visit www.fisherandcompany.co.uk to view our range of products

1-4 Cary Court, Somerton Business Park, Somerton, Somerset TA11 6SB



Feeder Pillars

We manufacture and supply a huge range of Feeder Pillars to suit every purpose in galvanised or stainless steel and GRP. Shell only or pre-wired



For every type of power distribution, EV Charging, MRI for Hospitals, Sports & Leisure, Parks & Gardens, Events & Markets, Multi-Service & Multi-User



We keep a wide range of quality Feeder Pillars in stock. Bespoke orders from just 2 weeks

Quality and service count: Customised doors and panelling

Pandor is a leading manufacturer of customised doors and panelling across the UK to sectors such as commercial buildings, offices, hospitals and flats.

Established in 2014 by Mike Hill, the company has grown exponentially over the last nine years, priding itself on supplying exceptional customer service and high-spec products. Mike has expertise in the industry having worked in the fire door industry for over 40 years and along with his team is happy to provide customers with bespoke orders.

Pandor has production facilities in Sittingbourne, Kent and offices in London. We chatted with founder and director, Mike to find out more about the company, "We specialise in made-to-order client requirements for fire doors, decorative doors, frames and other associated items such as screens and windows."

"Our speciality though due to my background, is certified fire doors and door sets and we pride ourselves on a personal and prompt service with quick lead times on manufacturing."

"The COVID-19 pandemic set us back of course, as the construction industry ground to a standstill. We soon restarted though and have been ever busy, focusing on adding new services in the near future. Our unique selling point is our investment in modern machinery across the board, ensuring that we always produce the highest-quality products. These



include a Holzher 5 Axis CNC Twin Bed Router, heavy-duty sanding machine, veneer flow line press and first-class lipping and edge banding."

Fire doors are integral to optimised passive fire protection systems across industrial, commercial and domestic buildings in the UK. Precision-designed primarily to mitigate against the spread of fire, smoke and toxic gases from one area to another, fire doors allow occupants, whether residents or workers extra time to evacuate accordingly. A secondary factor is that compliant fire doors give firefighters more time to arrive at the scene of the fire and control the fire, before it spreads further. Using a system of compartmentalisation, with fire doors lined throughout in corridors or stairwells, can create fire-resistant barriers in a high-rise block and importantly help slow down the spread of fire and smoke.

Fire doors are given FD ratings from 30, 60, 90 to 120, with FD30 being the most common choice. This

typically gives 30 minutes fire safety protection, in the event of a fire.

Following the tragedy at Grenfell Tower, North Kensington where sadly 72 residents died, the subsequent Fire Safety (England) Regulations in 2022 came into effect on 23rd January 2023. With all eyes on optimised fire safety, Pandor can manufacture customised fire doors, in accordance with FD30, 60, 90 or 120 certifications.

"Our fire doors can be laminated, painted or decoratively veneered and our acoustic doors can also be fire rated. The acoustic door ratings are certified based on how well the sound is contained in the door itself. The doors are tested to different decibel (dB) levels, dependant on the end location, with the higher the acoustic rating, namely the louder the sound it can contain. For example, the acoustic rating for doors in residential flats is 29dB, raising to 30dB in a typical school classroom."

"We supply fire-rated panelling if required, in stock and cut sizes, with a choice of veneer, laminate or paint finishes. Finally, our door frames are manufactured to customised order, with clear or paint finishes," added Mike.

**For more information,
please see the details below:**
T 0208 2797611
M 07909 530007
mike@pandor.ltd
<http://pandor.ltd>



Pandor

BESPOKE DOOR AND PANEL MANUFACTURERS

FIRE DOORS | ACOUSTIC DOORS | PANELLING | DOOR FRAMES

THREE KEY VALUES

SUPERLATIVE QUALITY | SHORTEST DELIVERY | ATTENTION TO DETAIL

OFFERING SERVICE LIKE NO OTHER

EXCELLING IN ACHIEVING FAST LEAD TIMES
FOR BESPOKE FIRE DOOR SETS

QUALITY AND SERVICE WITH A SMILE

PROUD MEMBERS OF THE **BM TRADA Q-MARK SCHEME**
FOR FIRE DOORS YOU CAN DEPEND ON

UNIT F2/F3 | LONDON ROAD TRADING ESTATE
SITTINGBOURNE | KENT | ME10 1SX

CALL: 0208 279 7611 | 07909 530 007

EMAIL: [MIKE@PANDOR.LTD](mailto:mike@pandor.ltd) | [PANDORLTD@HOTMAIL.COM](mailto:pandorltd@hotmail.com)

Number one choice for recycled plastic building materials

In this issue of Building Update, we have chosen Kedel as our Eco-Friendly Plastic Products Company of Choice 2024.

Kedel is a family business founded on ethical and ecologically sound principles. Dedicated to making sustainable living attractive, Kedel believe that by incorporating sustainable recycled plastic products into personal and working environments, it can create a happier, healthier and infinitely more sustainable future for generations to come.

Established by three brothers, Kieran, Dermot and Lewis Walch, Kedel is based in Burnley and supplies nationwide. We spoke to Lewis, who explained more about the company. "We manufacture plastic wood made from waste polystyrene, and we are also suppliers of many other types of recycled plastic profiles from other manufacturers. We stock tongue and groove boards, plastic sheet materials, decking, cladding, ground reinforcement and drainage grids, fencing and gates. In addition, we make a wide range of outdoor furniture often combining different types of recycled plastic into one product. These products

include benches, tables, picnic tables, notice boards, to name just a few. We also offer design services and have a large flatbed CNC (computer numerical controlled) machine for cutting and shaping to the CAD design parameters supplied by our customers or created for them by our in-house design team."

As specialists in building supplies and outdoor furniture, one of the main benefits of the products and services provided by Kedel is the long-term investment advantages of recycled plastic. Using recycled plastic not only greatly contributes towards the reduction of carbon footprint, but companies will see a significant reward on their return.

"It never rots, so if you build fencing or decking with it, you only do the job once in a lifetime. There's no cost of ownership, no maintenance – no costs for labour and materials, or for that matter, replacement costs.

Wood is becoming increasingly expensive and difficult to source, and needs constant attention to avoid deterioration. Yes, the initial costs for recycled plastic are higher, but over a 25-year period, a study by WRAP (Waste Resources

Action Programme), in 2000 proved it to be a more cost-effective material due to the product's extended longevity and zero maintenance properties."

'Your Housing Association' in South Manchester installed plastic fence panels made from Kedel's recycled plastic about 10 years ago. They haven't had to replace a single fence panel since!" said Lewis.

In the past, Kedel's plastic wood has been named 'Best Recycled Product' at the National Recycling Awards and is an ideal maintenance free replacement for wood, cladding, gallows brackets, pediments, fascia boards, rafter tails, finials, fencing and decking. Kedel has over 1,000 products in recycled plastics available on its website with a wide variety of profiles to choose from that could save you a lifetime of maintenance and replacement costs.

A notable product in Kedel's sustainable product range is fencing, that comes as fixed or portable panels, or you can buy the materials to make your own. You'll never need to replace a fence again. They are rot-proof and non-absorbent making them very hygienic and easy to clean. They don't chip, crack, or splinter, and are water and frost proof.

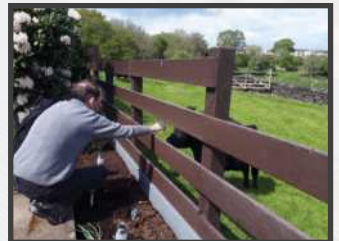
Ideal for education establishments and facilities management are Kedel's maintenance-free benches and picnic tables. They look like wood but perform like plastic, and the tables last at least five times longer than wood, making them a very attractive long-term investment.

For companies willing to create a circular economy for plastics, look no further than Kedel.

For more information, please see below:
T 01282 861325
www.kedel.co.uk



The Zero Maintenance Alternative to Wood



Recycled Plastic

- 100% recycled and recyclable
- Impervious to fungi, algae, insects
- Never rots, splinters or cracks
- Graffiti resistant
- UV Protected
- Eco-friendly and low carbon
- 100% maintenance free
- Lasts a lifetime



Please contact us on 01282 861325
sales@kedel.co.uk | www.kedel.co.uk



BARTELS & VEDDER

Interdisciplinair Ingenieurs & Consultancybureau

BARTELS & VEDDER BV is an engineering firm, specialized in engineering structural and infrastructural projects on both land and water.

We have developed an expertise in 'Flood Proof' building, such as floating.

Some of our referenced projects are shown in the pictures. Our engineering and advice concern the following types of 'Flood Proof' projects:

- Floating houses and villa's
- Floating parks
- Floating offices
- Floating islands
- Floating neighbourhoods and cities
- Floating solar
- Floating jetties
- Mooring structures
- Fendering
- Bridges.

We offer the following services:

- Structural calculations
- (3D BIM) drawings
- Structural advice
- General project advice
- Monitoring and guidance



info@bartelsvedder.nl

WWW.BARTELSVEDDER.NL

+31 6 422 398 53

Varnish & Waterproofing

LE TONKINOIS VARNISH

LE TONKINOIS VARNISH IS A NATURAL OIL BASED YACHT VARNISH, USING A CHINESE FORMULA DATING BACK TWO OR THREE CENTURIES AND WHAT A FORMULA!

IT REMOVES YOUR BRUSH-MARKS, BRINGS OUT THE NATURAL BEAUTY OF THE TIMBER, DOESN'T CRACK OR FLAKE OFF, AND IS PERMANENT, SIMPLY ADD A FURTHER COAT EVERY FEW YEARS.

LE TONKINOIS CLASSIC IS THE ORIGINAL CHINESE RECIPE, WHICH HAS PROVED TO BE A FIRST CLASS RESILIENT AND RELIABLE VARNISH FOR MORE THAN A CENTURY. TRADITIONALLY USED BY THE FRENCH NAVY FOR ALL THEIR SAILING VESSELS, AND WIDELY USED BY TRADITIONAL CRAFTSMEN FOR YEARS. IT TENDS TO GIVE A THICKER COAT THAN MARINE NO 1.



Please visit www.letonkinoisvarnish.co.uk

Telephone 01628 629892 or email mail@letonkinoisvarnish.co.uk

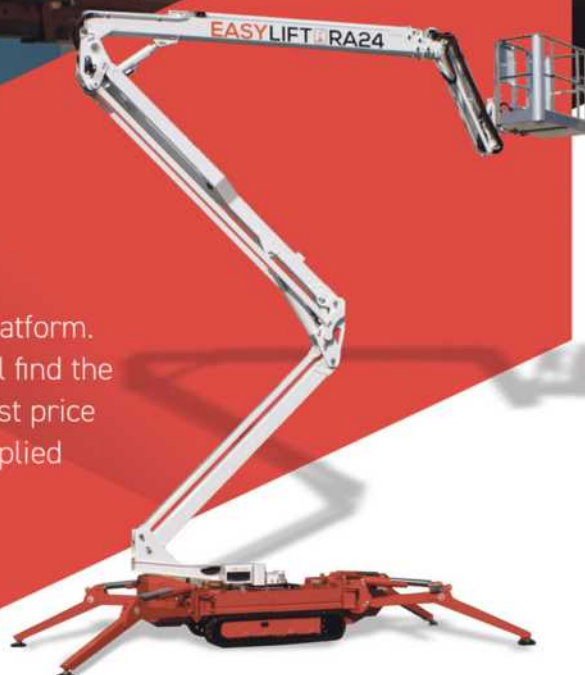
ACCESS ANY- WHERE



**INDEPENDENT
ACCESS SALES**

CONSULTANCY

Independent Access Sales will find your perfect access platform. With 35 years of experience in the access industry we will find the platform most suited for your needs and supply at the best price achievable. We will also manage the servicing of the supplied platform through our contract servicing department.



SERVICING

We are a complete service management facility throughout the UK. We will advise you when your platform requires its six month Inspections arrange the works and supply the required certification, all at your premises, We have access to a large network of access platform components and therefore any additional repairs can be undertaken.



**GET IN TOUCH TODAY OR VISIT
OUR WEBSITE TO VIEW OUR RANGE.**

T. 07483 246878

E. ENQUIRIES@IASALES.CO.UK

W. WWW.IASALES.CO.UK



Protecting your investment, with award-winning, sustainable products

External wall insulation (EWI) is one of the fastest growing areas within the UK construction industry. For time immemorial, timber pattresses have been used to secure the fixing of satellite dishes through to utility boxes upon reinstatement. This was until SWIFIX: an Exeter-based company came up with a brilliant, innovative design range that bypassed traditional timber methods in 2016.

Paul Brown is the Director and brains behind the operations, with an extensive background in leadership in senior management, starting his career as a plasterer completing EWI.

SWIFIX is a multi-award-winning company that designs cutting-edge solutions for securing external furniture through External Wall Insulations (EWI). Since its inception in 2016, the range has been extensively extended, including a recent, exclusive design partnership with SKY telecommunications for a

new product for securing cables and small pipework.

"We work with a broad range of customers from Architects, Local Authorities (LA's) to major contractors and system designers providing surefire solutions for securing external wall furniture, through insulation and cladding, across a range of properties, including retrofit, new build, and the off-site modular sectors.

"Our unique design approach has brought robust solutions to market, for securing external furniture through EWI. These include: satellite dishes, rainwater goods, canopies, light alarms, signage, cables, pretty much any item that needs reinstatement," explained Paul.

The SWIFIX range are PAS2035-compliant for quality assurance and with easy installation and added cost-efficiency, it's easy to see why they are the leading choice for many customers.

The products are regarded as industry-leading, shortlisted for the National Energy Efficiency Awards (2016): with many other accolades recognising innovation and Excellence in the Energy Efficiency Sector, and more recently, The INCA Innovation Award Winner in 2021. The Insulated Render and Cladding Association (INCA) is the recognised trade association for the EWI industry across the UK and awards are given for exceptional work in the industry. We asked Paul, in his own words what made SWIFIX products so special, "SWIFIX are recommended by many system designers as a product of choice, due to the fact that by using the solution and the way in which they are installed, they protect warranties and guarantees for the systems installed."



"The range provides a robust and watertight solution preventing ingress of water, which is damaging to systems. It truly offers a unique solution, unsurpassed by competitors, as it is suitable for many different formats and can hold greater weights. Overall, it is significantly cheaper than its competitors, offering considerable cost savings."

"I'm very proud of our green credentials: it is a very eco efficient-range, made from partially recycled plastics with all the parts are fully recyclable, along with the packaging, making our products very attractive in the age of sustainability."

For more information on this award-winning range, please see below:
T 01884 560477
info@SWIFIX.co.uk
www.SWIFIX.co.uk



INNOVATIVE PRODUCTS TO ENABLE FIXING THROUGH EXTERNAL WALL INSULATION

Our products are one of the most cost-effective solutions to enable the fitting of external furniture through external wall insulation and rain screen cladding, with the added benefit of being designed specifically for the job. Fully PAS 2035 complaint for the future of retrofitting and the Modular housing sectors and the ideal solution for a longer term maintenance provision.

All fittings meet stringent technical requirements by preventing the compression of insulation and providing a watertight seal. They are also approved by many leading manufacturers and organisations developing modern methods of construction to support the requirement for new homes in the UK.

To find out more, please visit **www.swifix.co.uk**, call **01884 560477** or email **info@swifix.co.uk**

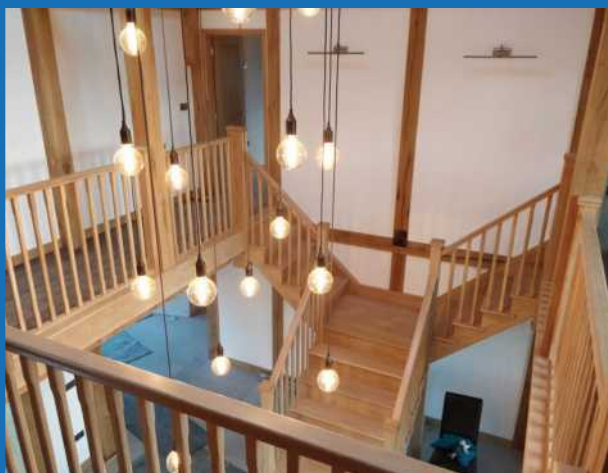




Bluerun Limited

quality bespoke joinery since 1991

QUALITY, CUSTOM MADE JOINERY



Bluerun Ltd have been manufacturing top quality, purpose made joinery for the domestic and commercial markets for over 30 years.

Contact us to discuss your requirements.



Please visit our website: www.bluerunltd.co.uk
Tel: **01799 599995** | Email: dee@bluerunltd.co.uk
f bluerunltd @ bluerun_joinery

Make your project possible

DCON Safety Consultants Limited offers leading health and safety consultancy and construction statute advice services. The company prioritises and specialises in the highest levels of informed and intelligent advice, senior project resource allocation and compliance assurance. Informed by industry expertise, DCON Safety Consultants Limited knows that every project has potential risks, no matter what its potential benefits, so its team of highly experienced construction professionals helps to ensure clients' statutory conformity.

Upon gaining understanding of the specific needs, goals and desires of each client and their project, DCON Safety Consultants Limited is dedicated to implementing a design and construction management plan that will meet or exceed these requirements. And, DCON Safety Consultants Limited ensures that there is honesty, integrity, trust and professionalism underpinning every project.

Moreover, the company's services are centred on three delivery principles:

- **Maximising Quality:** The company implements proven health, safety and wellbeing strategies to help clients achieve high quality and cost-effective work commensurate with the design of their projects.
- **Minimising Risk:** The company effectively manages design and delivery risk on projects to match each client's desired risk level profile.
- **Managing Compliance:** The company relies on its extensive background working on a wide variety of projects to assist clients in developing, monitoring and maintaining compliance performance.

This excellent service would not be possible without the leadership of Diarmuid Condon, a construction industry leader who brings unique perspectives to encourage,



support and mentor the abilities of his colleagues. As a construction professional with a surveying background and experience spanning two decades, Diarmuid is emblematic of DCON Safety Consultants Limited's commitment to providing outstanding services to clients.

Diarmuid has contributed his invaluable expertise to over 400 projects over 20 years, with a client list including public sector departments, corporate owners, real estate developers, main contractors, design professionals and infrastructural bodies. With this incredible portfolio, Diarmuid is helping DCON Safety Consultants Limited to become a leader in health and safety consultancy across the construction industry.

Key to DCON Safety Consultants Limited's services is working as a Project Supervisor for the Design Process and CDM Advisor in various sectors across the Irish construction market. No project is too simple or too complex for the company's construction safety consultants, all of whom are construction professionals with an average of 20 years' experience in the built environment. The ability to maximise this knowledge

and skillset means DCON Safety Consultants Limited can generate distinctive and innovative ideas from traditional PSDP service inputs and outputs.

DCON Safety Consultants Limited also provides its main contractor clients with intelligent, practical, and reasonable physical site safety advice to support compliance and good practice adherence. Behavioural safety outcomes inform how the company approaches each solution with the contractor and their supply chain, identifying opportunities for improvement.

To complement this, DCON Safety Consultants Limited can also help with clients' health and safety strategy. Its holistic and integrated approach can help unlock substantial benefits for clients by providing a structured, objective and SMART framework for full optimisation through the creation of an environment that embraces health, safety and wellbeing.

This means DCON Safety Consultants Limited helps clients to improve their health, safety and environmental performance; enhance staff satisfaction thanks to improved performance; improve risk management and corporate governance with a clear audit trail; gain confidence from long-term planning, better sustainability and performance; and improve overall corporate reputation, including greater staff satisfaction and a more efficient procurement and supply chain.

If you are interested in finding out more information on DCON Safety Consultants Limited's full range of excellent services, head to the website or get in touch directly using the contact details below.

T +353 (0)1 611 1556
diarmuid.condon@dconsafety.com
www.dconsafety.com



Leaders in Built Environmental Safety and Health and Wellbeing Consultancy

Consulting on various aspects of project design, constructability and operational lifecycle matters for local and global commercial clients.



OUR SERVICES

- DESIGN SUPERVISOR
- PLANNING COMPLIANCE
- CONSTRUCTION HEALTH & SAFETY
- HEALTH & SAFETY STRATEGY
- EXPERT WITNESS



Please visit: www.dconsafety.com

Email info@dconsafety.com • Phone +353 (0)1 611 1556
 DCON Safety Consultants, Suite 5, Fitzwilliam Square East, Dublin 2

INTEGRASPEC® is your best choice of ICF to deliver

The Ballantine Building Solutions team has over 20 years experience as ICF Builders suppliers, Installers & Builders using ICF and have worked on many successful ICF projects.

ICF is based on hollow lightweight block components that lock together to provide a formwork system into which concrete is poured. The blocks are made from expanded polystyrene panels fixed together with plastic webs (reducing thermal bridging) to create a formwork to which horizontal and vertical steel reinforcements can be easily added for extra strength. Once braced, concrete can be poured into the forms enabling fast construction one storey at a time.

The ICF walls as soon as built are waterproof even before the external finishes are applied, allowing internal work to commence sooner. This ensures for an incredibly fast & efficient construction that isn't impacted by adverse weather in the same way traditional masonry is. Cold



temperatures do not affect progress.

With an average saving of between 25% to 30% in both cost & building time and low 'U' Values from 0.23W/m²degk down to 0.11W/m²degk – When all factors & benefits are taken into consideration, ICF

becomes extremely competitive compared to both traditional building methods and lightweight framing.

T 028 9590 6508
admin@integraspec.co.uk
www.integraspec.co.uk



ICF INSULATING CONCRETE FORMWORK

Up to 70% Savings on Energy Costs
Significant Savings Compared with Traditional Build Block/Timber Frame

WHAT IS IT?

Insulating Concrete Formwork (ICF) is an energy efficient method which creates insulated structural walls for residential and commercial buildings



MAIN BENEFITS

- For the Builder Fast Track Construction
- Good House Keeping
- Simple Service Installation
- Improved Site Safety
- Structural Stability
- Significant Cost Savings
- Less Down Time
- Immediate Follow-on Trades
- Less Heavy Plant
- Energy Savings



CONTACT US



@ballantinebuildingsolutions

T: 028 9590 6508
E: admin@integraspec.co.uk
W: www.integraspec.co.uk

EXPLOSION PROTECTION

VDex® Diverter



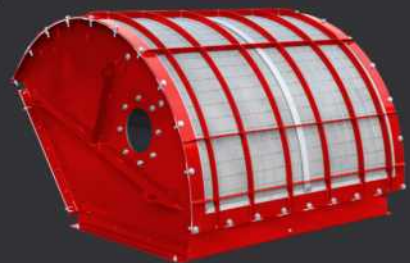
VigiFlap® Isolation Valve



Explosion Vent Panels



VQ Flameless Vents



info@macclancyandsons.co.uk

www.vigilexuk.com

LS Products BV to introduce new Autonomous range in 2024

In this issue of Building Update, we are pleased to feature LS Products BV as our Landscaping Product Company of the Year.

LS Products BV is the manufacturer of the innovative Eco Clipper electric mower system that was introduced for the turf grower industry in 2018.

Due to the fact that all the mowers in the range are electrically driven and use a special mowing deck design that incorporates small mowing blades, the Eco Clipper range delivers fantastic contour following and has the capability to disperse clippings well even in wet grass.

Furthermore, because of the high-speed mowing system, productivity is inevitably higher and fuel efficiency better due to the small blades and electric drive. The machine is very quiet and versatile under different conditions such as dewy grass and weeds.

The Eco Clipper® Mowing System evolved from the mowing system that was originally developed in the nineties on the turfgrass farm of the Leijenaar family in the Netherlands. At that time, the electrically driven 10m wide rotary mower was a revolution for the turfgrass industry, and up until 2008 there has been various models of this rotary mower developed and marketed by Leijenaar Products BV.

In 2019, the Eco Clipper range was successfully introduced to turfgrass farms across Europe and then in 2020 they introduced the 14.11-meter-wide Eco Clipper: RM14 Butterfly Mower and the Eco Clipper TM14 tri-deck mower that were both revolutionary mowers for the turfgrass growers and sports ground sectors.



Syb Leijenaar is the Managing Director of LS Products BV and has a vast amount of experience that is deeply rooted in mechanical engineering and mechatronic systems design, and is one of the creators of the Eco Clipper range. We asked Syb how the company has fared over the last 12 months and what plans it has for the future.

"The last 12 months have been slower business wise, although it seems business is picking up since summer. As we are an agile company, we used the opportunity to spend more time on new developments. Our current developments are mainly focused on autonomous large area mowing. Our autonomous mowing system will be introduced in the coming year. We offer a 309cm or a 513cm wide Eco Clipper mowing deck where the power comes from either a diesel generator or a 61kWh battery pack."

"We are keen to increase productivity in large area quality mowing, hence lowering the mowing costs for our customers. For turfgrass growers and sports ground managers, we already have the most productive equipment in the market due to the large cutting width and high possible mowing speeds. For the autonomous mower it is important that it can be operated safely without immediate supervision otherwise it won't save labour. Therefore, we have partnered with a Danish firm that fully focuses on safe operation of autonomous equipment in the field."

Due next year, the Eco Clipper Autonomous Mower uses three different types of obstacle detection: camera; lidar; and radar for its safety in dusty environments. The new Autonomous range will meet speeds of up to 16km/h and surpasses all safety standards with its cutting-edge obstacle detection technology.

"Over the next few years we expect to grow gradually in the sports ground market. We receive strong feedback from our users stating that they like the capacity, quiet running and economic use of fuel. In 2024, we will be introducing the autonomous mower on a couple of selected farms. We want at least a year of real-life experience before we introduce these systems to a wider audience," added Syb.

LS Products and its Danish partners are really pushing the boundaries in autonomous mowing solutions, and the next five years are looking very fruitful for both businesses. In closing, we asked Syb how he felt receiving our award.

"I feel honoured being selected for the Landscaping Product of the Year Award. When you work with these products every day, you no longer notice that they are different. This award reminds us that we stand out. We are proud of that."

For more information, please see below:
info@ecoclipper.com
<https://www.ecoclipper.com>

ModCon Cabin Trader Ltd

ModCon Cabin Trader was formed in 2017 by Alan Willets of whom has 25 years experience of working for some major manufacturers in the Modular & Portable Building Industry.

ModCon Cabins as it is also known manufactures and supplies Steel Anti Vandal Portable Cabins, Containers, Modular Buildings and all site ancillary items associated with the Portable Building Industry. Please visit: www.modconcabins.co.uk

Items such as Portable Offices, Canteens, Toilet units, Drying units, Storage Containers, Chemstores, Smoking Shelters, Effluent Tanks,



Staircases are regular and repeat produced items that we manufacture for our clients.

Based in Gloucestershire in the South West we are logistically nicely placed around all the major motorway networks for ease of transportation.

Our workforce are all very skilled and experienced fabricators of whom have many years experience working within our industry and so know the expectancy of our customers requirements so you can be sure that if you approach ModCon Cabins to undertake your work you are in very good hands!



Being that all items produced are mostly built on a jig and to customers own specification we are open to undertaking bespoke enquiries too so please feel free to engage with us here at ModCon Cabins even if you have a rather random enquiry for certain products.

Why not also take a look at ModCon Cabin Traders other side of the business which is an Auction/Resale website that allows all and sundry to utilise the site to sell new & used Portable Building products which operates very similar to a well-known auction/resale site we are all familiar with, however only for products relating to our industry.

T 0333 404 8822
info@modconcabins.co.uk
www.modconcabins.co.uk



ModConCabins
Manufacturer of Modular, Containers & Cabins



Steel AV Cabins • Smoking Shelters • Chemical Stores & Storage Units
Staircases & Steps • Effluent Tanks • Water Bowsers • Turnstiles



INTRODUCING



MODCONCABINTRADER
www.modconcabins.co.uk

ModCon Cabin Trader, the Modular, Portable Building & Plant Industry related, Resale/Auction website!

info@modconcabins.co.uk

+44(0)333 404 8822 07842 318869



Check the driving licences
of your entire fleet remotely
all for just £1.60 per check



Simple to use
platform



Pay-as-you-go
solution



Entirely remote
service



Innovative OCR
technology

To find out more visit
checkedsafe.com



Find us on



Unrivalled professional expertise: Wakefield's expert-chartered surveyor

Fennell Green & Bates is a chartered mineral, waste, energy and building surveyors practice, with a specialism in project co-ordination and management in the construction and mining industries.

The company had evolved substantially since its inception in 1875 when founders Mr Fennell and Mr Green, took over the practice from the eminent mining engineer: Mr J Tolson White.

Under the expert direction of the current director, the company has expanded exponentially, employing experienced staff with chartered surveying expertise. From its convenient central base the UK in Wakefield, West Yorkshire, customers can be reached easily within three hours, excluding the southern counties of Devon and Cornwall, which takes a little longer.

As leading specialists in construction project co-ordination and management, the company's range of services includes: building surveys, land condition surveys, coal and other mining reports, contaminated land audits, land and mine surveying, geotechnical advice and site investigation.

To allow for a more streamlined process, the company has recently embraced the digital era, by moving its substantial archive, documentation and filing systems to a more secure online storage. This has already provided a more efficient service for its large customer base of: self-build, SME home builders and commercial developers, farmers and landowners.

"Experience in all types of land and former use with a large archive of material to research, helps inform



modern solutions to ground conditions problems," says company Partner, John Carlon and keeps Fennell Green & Bates ahead of the competition.

"Our experienced staff are familiar with mining law, land law and regulation and redeveloping land. Experience in subsidence identification from mining and treating the effect, is highly valued by our customers," elaborates John.

It is this winning combination of experienced staff, with knowledgeable areas of expertise, with access to extensive archived documents and drawings, that has cemented the company as a leading specialised chartered surveyor.

Enlisting the guidance of an experienced chartered surveyor, like Fennell Green & Bates, at the early stages of land development or building property can mitigate against further challenges. Drawbacks could include: mining induced ground conditions,

contamination and the boundaries of the site, but through informative advice, customers can make detailed, informed decisions.

It is these important, expert risk assessments that can determine whether land use can be developed further to what the client chooses.

"We can advise on developments in former coal mining areas and solutions to stabilise land from any mining or industrial use. Our coal mining risk assessments can be included with future planning applications in areas of high risk as identified on the Coal Authority data base.

We offer competitive, cost-effective solutions to most land condition problems. Our latest services include: level 3 structural surveys, contaminated land reviews and valuation."

From its Wakefield base, this experienced chartered surveyor practice has helped a large diverse customer base across the UK and according to John, is wholly focussed on helping companies, especially smaller ones to succeed, "The plan for the future is to grow the practice and help the smaller developer to find cost-effective solutions to ground conditions and contamination."

**For further information,
please see the details below:**
T 01924 255666
M 07483 164372
fennellgreenandbates@gmail.com
www.charteredurveyorswakefield.co.uk



Fennell Green & Bates Chartered Surveyors is a 150 years old practice based in Wakefield. At FGB, we specialise in building condition surveys, house structural surveys, project management, town & country planning, coal mining risk assessments, site investigation and remediation of brownfield land.

Fennell Green and Bates have been involved in over 1,740 projects over the past 22 years dealing with contaminated land, ground stability issues, phase 1 contaminated desk top studies, phase 2 site investigation projects, coal mining risk assessments and soil sampling for housing, commercial and industrial developments in north of England and the Midlands. Our practice also acts as mineral advisors to several building materials companies and that work has taken our surveyors all over the UK and to Ireland, Europe, Russia, South Africa and Australia to work on a wide range of projects.

At present we are managing the remediation of a glass works tip on behalf of a client for the site to be used as housing after the materials on site have been processed and re-engineered on-site for the development platform. We have recently completed the verification of the works for a medium sized housing development in Yorkshire in a former quarry that has been backfilled with engineered fill from site.

Our team is experienced in all types of site engineering and soil management that includes materials testing that can save costs due to the re-use of these soils and a reduction in muck away.



Fennell Green & Bates
Old Joiner's Shop, 59 Oakenshaw Lane
Walton, Wakefield, West Yorkshire WF2 6NJ

Tel: 01924 255666
Mob: 07483 164372
Email: fennellgreenandbates@gmail.com
Website: www.charteredurveyorswakefield.co.uk

Hinges




GOLD & WASSALL
EST. 1790

Gold & Wassall have been manufacturing hinges for over two centuries, so it's safe to say we know what we're doing.

Our team of experts can design and manufacture almost any hinge, for any application.

T 01827 63391
sales@goldwassalhinges.co.uk
www.goldwassalhinges.co.uk

Project Management Software




elevateTM
Construction Made Easy

Elevate software can provide real-time updates, directing everyone on actions and this results in the team, prioritising their time and becoming more productive.

www.elevate-software.co.uk

Interior & Exterior Furniture



BESPOKE CRETE

BespokeCrete creates custom and bespoke furniture, outdoor kitchens, kitchen worktops, waterfall islands, patio sets, indoor table & bench sets, coffee tables, baths, sinks and so much more – that is fully waterproof, heat, stain and scratch resistant.

T 0800 061 4157
info@bespokecrete.com
www.bespokecrete.com



Deephole Drilling



UNISIG
DEEP HOLE DRILLING SYSTEMS

Our industry-leading customers around the world rely on UNISIG® deep hole drilling technologies for powerful, productive solutions and value. We engineer our machines to handle a complete range of applications, and support them with our high level of expertise and service.

www.unisig.com



Safety Consultancy




DCON
SAFETY CONSULTANTS

DCON Safety Consultants is committed to understanding the specific needs, goals, and desires of each individual client and project.

T +353 (0)1 611 1556
info@dconsafety.com
dconsafety.com

Sign Plaques & Architectural Castings




LEANDER
ARCHITECTURAL

Manufacturers and designers of high quality fingerpost signs, bandstands, bespoke canopies, Porte-cochère, blue plaques, noticeboards, cast signage, memorial plaques, street furniture, gazebos and much more.

T 01298 814941
www.leanderuk.com

Portable Buildings



ModConCabins
Manufacturer of Modular, Containers & Cabins

ModCon Cabins provides modern, affordable and bespoke modular and portable buildings for a multitude of situations, each one carefully crafted from new and used shipping containers.

T 0333 404 8822
modconcabins.co.uk



Eco-Friendly Plastic Products




KEDEL TRADE
ECO-FRIENDLY PLASTIC PRODUCTS

Kedel Limited is a family business, founded on ethical and ecologically sound principles.

We created our business to showcase the very best recycled plastic products, putting green, sustainable living at the heart of all our company decisions.

T 01282 861325
www.kedel.co.uk

Compliance Solutions



CheckedSafe was developed to provide simple and inexpensive compliance solutions that could be tailored to any industry.

Contact
T 01282 908429
info@checkedsafe.com
www.checkedsafe.com

Timber



The Company was founded in 1883 by Louis Vandecasteele. In those days, wagon making was the main commercial activity. Desiré Vandecasteele, son of the founder, then added a small sawmill.

Contact
T +32 56 43 33 00
vandecasteele.be/en

Machinery



With 35 years of experience in the access industry, we will find the platform most suited for your needs and supply at the best price achievable.

Independent Access Sales offer a complete service management facility throughout the UK.

T 07483 246878
enquiries@iasales.co.uk
iasales.co.uk



Landscaping Machinery



Eco Clipper offers large electric-powered mowers that help field managers minimise mowing costs for sports fields. Users report high productivity gains and appreciate low maintenance requirements, quiet operation and the ability to schedule mowing even under less favourable mowing conditions, such as early morning dew and wet autumn.

T +31 (0) 6 46 75 35 60
www.ecoclipper.com



Engineering & Consultancy



Bartels & Vedder is an engineering firm, specialised in floating and flood proof buildings and structures.

T +31 (0)6 422 398 53
www.bartelsvedder.nl

Waterproofing



TuffStuff® is the UK's premium designer, manufacturer and supplier of heavy-duty GRP waterproof flat roofing systems.

T 01977 680250
orders@tuffwaterproofing.co.uk
www.tuffstuff.co.uk

Fixings



Our Award Winning Solutions are one of the most cost-effective solutions to enable the fitting of external furniture through external wall insulation and rain screen cladding, with the added benefit of being designed specifically for the job.

T 01884 560477
info@swifix.co.uk
www.swifix.co.uk



Storage



Wallbed Systems offers a large range of wallbed hardware designs. We produce many different styles of wallbeds and ship all over the world.

Contact Jeremy Waller,
T +44 (0)208 704 5796
jeremy.waller@wallbedsystems.co.uk
www.wallbedsystems.co.uk



For all your ecological needs

Welcome to Learn Ecology, an ecological education and consultancy services formed by experienced consultant ecologists and qualified teachers.

Learn Ecology offers a range of informative, impactful educational programmes and consultancy services across the UK that ultimately aim to engage everyone in the protection of UK wildlife and habitats.

It's extremely professional and knowledge team hold key values in creativity, honesty, integrity, and responsibility as they work together with school children, university students, and aspiring ecologists to change the way we live for the better.

Learn Ecology has an extensive range of educational experiences suited for all ages and experience levels. From one-off activities and worksheets to survey workshops, guest lecturing and talks, these services can also be extended into a more bespoke service where courses can be integrated into the curriculum of schools, colleges, and universities.



If you're more interested in its consultancy services that include Phase 1 habitat and general faunal surveys, UK Habitat Classification, Biodiversity Net Gain Assessment, and Phase II Protected Species surveys, then Learn Ecology is happy to help all clients throughout the entire planning and development process harnessing a pragmatic approach to survey and mitigation. Other services include faunal surveys, strategic advice and preliminary ecological appraisal, UAV surveys, and intricate advice on biodiversity net gain, impact avoidance, mitigation, and compensation.

For more information, please see below:
T 01926 919419
info@learn-ecology.com
www.learn-ecology.com



WE PROVIDE ECOLOGICAL EDUCATION AND CONSULTANCY SERVICES ACROSS THE UK

Learn Ecology was established by a team of experienced ecologists and teachers in 2021, with the aim of providing ecological education and specialist consultancy services for everyone across the UK.

Our vision is to promote ecology to people of all ages, ranging from school groups to established organisations, offering ecological training, workshops, and consultancy services tailored to our clients' needs.

Visit www.learn-ecology.com
T: 07841 629273 lhE: info@learn-ecology.com



Sheet Pile Installation

BURNSIDE PLANT HIRE LTD

SHEET PILING - FOUNDATION PILING - MINI PILING - NATIONWIDE SERVICE

Sheet Pile Installation
Cofferdamn Installation
King Post Installation
Mini Piling Installation
Tube Installation

Permenant and Temporary Design Works

0141 374 2895 • 07787 575418 • 0141 647 9331

Email: shirley@burnsideplant.co.uk

Web: www.burnsideplant.co.uk

Glasgow

A cut above the rest

In this issue of Industrial Solutions, we are thrilled to feature CAMB Machine Knives International for its Commitment to Excellence in consistently supplying high-quality knives to the global machine knives industry.

Established in 1989, CAMB Machine Knives has served a broad range of industries for many years. From initial start-up to present day, CAMB has grown significantly boasting an international reach with a network of exporters and carriers and offices and agents based in Europe, New Zealand, South Africa and many more countries.

However, it has not always been plain sailing for the company. CAMB has overcome many challenges to remain the industry's best and this award only serves as benchmark to its excellence and continuous improvement through adversity.

We spoke to Neil Chapman, Technical Director at CAMB Machine Knives, who we believe has shown great courage amidst adversity over the past 12 months.

Neil explained that he and Darren were made the new company directors while the founder/owner Jerry Milner resigned in November 2022. Unfortunately, in June 2023, Jerry passed away. "Jerry was more than just a boss to everyone who worked here; he was a friend and a mentor. Now, we have big shoes to fill."

Through hardship, Neil and his team have done extraordinarily well to successfully steer the company forward and to achieve a record-breaking year. "Our forecast was conservative as there has been an increase in sales for the last few years due to COVID-19 and the uncertainty of businesses staying open during lockdown. We found many customers wanted to keep stocks on-site therefore, sales increased and we expected this to return to normal and sales decrease a little," added Neil.

Since the unfortunate passing of Jerry, Neil was appointed as Director alongside Darren Hitchings, who between them, have a combined 40 years of experience in offering the same high-quality service to customers around the world. Together, they have worked hard to boost employee morale and attract new business since Jerry passed.

CAMB produces an extensive range of high-quality machine blades for all industries that come in many different types, including: Circular Knives, Special Shape Knives, Top Dished Knives, Bottom Knives, Toothed Knives, Guillotine Knives, Granulator Knives, Confectionary Knives, Tray Form Blades, Anvils, and much more, from the food industry to reclamation.

"We hold a lot of stock consisting of over 500 different knives, mostly for the poultry and food



industry. This means we can accommodate custom orders that require quick lead times by modifying our blades for a specific use case. We also supply circular Microteeth knives for the poultry industry, and testing has shown our wear resistance is very good and with very competitive pricing," added Neil. These knives, in reference, include Circular Scalloped Microteeth Knives and replacement knives for many makes and models of machines.

With lots more in store for the company in 2024 and beyond, Neil explained some of their short and long-term goals. "In the short term, we are reviewing every process to help us streamline processes. In the long term, we want to invest in new machinery to expand our machining capabilities. We are extremely honoured to receive such an award, thank you. It is great to see our hard work over the last 12 months has paid off and getting the recognition the staff deserve."

For more information, please see below:
T 01454 322178
sales@camb-knives.co.uk
<https://www.camb-knives.co.uk>

CAMB MACHINE KNIVES: "A Cut Above the Rest"

QUALITY IS OUR GUIDING PRINCIPAL

With over 34 years of experience supplying the machine knives industry, CAMB Machine Knives was established in the UK in 1989 and aimed to provide consistently high quality knives and service to a broad range of industry sectors. Based on these guiding principals, CAMB Machine Knives has flourished and grown throughout Europe, USA in 25 countries worldwide establishing a reputation for high quality products and service.

CAMB MACHINE KNIVES INTERNATIONAL REACH

CAMB Knives International really does have an international reach with a network of exporters and carriers – with offices both in the UK along with agents in Spain, Netherlands, Italy, Germany, South Africa and many more so you'll never be far away from a CAMB Knives representative.

KNIVES FOR INDUSTRY – WE'LL SUPPLY IT

Our range includes many types of blades, but not limited to:

CIRCULAR KNIVES

GRANULATOR KNIVES

POULTRY KNIVES

RAZOR BLADE KNIVES

STRAIGHT KNIVES

TOOTHED KNIVES

TRAY FORM KNIVES

TOP/BOTTOM KNIVES

ZIG ZAG KNIVES



CAMB MACHINE KNIVES INTERNATIONAL LTD

Tel: 01454 322178 | Fax: 01454 321172

Email: sales@camb-knives.co.uk | www.camb-knives.co.uk

MANUFACTURERS AND DISTRIBUTORS OF MACHINE KNIVES TO ALL INDUSTRIES





Shaping the future of lightweight alloy applications

Extending Life & Reducing Weight

Key Benefits of Keronite / PEO Applications?

- Extreme hardness
- Corrosion resistance
- High strain tolerance
- Uniformly applied coatings
- Wear resistance
- Environmentally friendly
- High fatigue performance
- High dielectric resistance
(for electrical component applications)
- Plasma resistant coatings



Advanced Surface Treatments
for Light Alloys

+44 (0)1233 893222
eurosales@cwst.com
www.keronite.com



High Quality Panel Mount Indicators

CML IT continues to be the number one supplier of panel mount indicators, LED lamp replacements and LED tower lamp solutions. PMI highlights include:

- Plastic and metal bezels with a wide range of options in stock.
- Development of custom solutions.
- IP40 and IP67 ratings.
- UK manufacturing facilities.



Contact our Customer Services department to discuss your requirements today.



CML Innovative Technologies Ltd,
69/70 Eastern Way, Bury St Edmunds,
Suffolk, IP32 7AB, United Kingdom
Tel: +44 (0)1284 714700
email: uksales@cml-it.com

Visit our website at: www.cml-it.com

Electrical Products

Simonbox IP66 Waterproof Floor Outlet



Gromtec
europe UK

Available
from your
electrical
wholesaler



Occasional Power
Outlet ideal for
concourse, garage
showrooms, pop
up display areas



Available in two finishes

For more information
www.simonbox.co.uk - 0203 2867949

Service Sealing Solutions Ltd – suppliers of DOYMA products



Service Sealing Solutions Ltd are the sole UK distributor of DOYMA products. Wherever services are installed through walls, ceilings or floors, penetrating water may cause damage to buildings. Lack of attention to the points of entry of pipes and cables into the building can have serious results: damp cellars, equipment damaged by water ingress and high repair costs. Service sealing systems ensure professional and perfect pipe sealing, thus presenting excellent preventative measures against structural damage. The very best in German engineering is used to seal penetration points to the wall to permanently prevent any infiltration of gases and water into the building, and the duct sealing systems are guaranteed for 25 years. Service Sealing Solutions supply the full range of products to suit all situations for power cables, communication cables, pipes and ducts, and specialising in sealing district heating pipes.

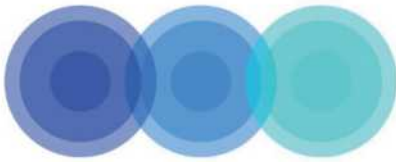


Service Sealing Solutions Ltd



**01952 510050 | www.servicesealingsolutions.co.uk
sales@servicesealingsolutions.co.uk**

The UK's number one sealing solutions provider



Service Sealing Solutions Ltd

Service Sealing Solutions Ltd provide a number of different sealing solutions across the UK to both the public and private sectors. As the sole UK distributor for the sealing industry's top manufacturers; DOYMA and HKD, Service Sealing Solutions Ltd specialises in high-quality service duct sealing systems for utility services and watertight seals.



Service Sealing Solutions Ltd has the exclusive rights to distribute DOYMA products in the UK. DOYMA stands on the front line when it comes to the development of innovative, practical solutions for sealing and fire systems. Providing the very best in German engineering, DOYMA is used to seal penetration points in walls and floors to permanently prevent any infiltration of gases and water into the building. All DOYMA products are designed to solve all watertight duct sealing requirements, prevent against structural damage and incorporate rubber mouldings that ensure all gas and watertight features.

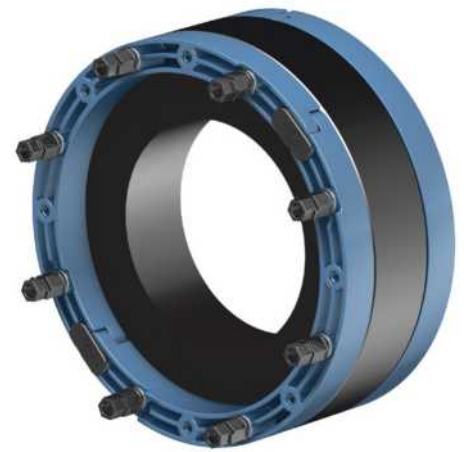
Demanding building types, such as power plants, large industrial plants, reservoirs or airports, often require highly specialised custom-made constructions. They place high demands on the fact that building penetrations such as cables and



Husband and wife team, Jim & Tina have recently visited DOYMA in Germany to find out about the innovative products that DOYMA have been developing

pipe work need to be permanently sealed. In the case of extraordinary pipe dimensions or special thermal, chemical or physical requirements, sealing systems in the form of a special construction are the required solution.

Service Sealing Solutions Ltd has a large range of DOYMA products that come with a 25-year warranty. DOYMA product brochures are available on the website and include products that have been supplied to some of the UK's largest projects such as HS2 and Kings Cross in



London. DOYMA has recently released its new generation Curaflex Nova® gaskets, which are the perfect solution for any professional tradesman instantly looking to solve sealing problems and can be adapted to multiple applications.

Service Sealing Solutions also supplies HKD products, which are now owned by DOYMA. HKD manufacture a large range of pipe sealing systems and service conduits that are guaranteed to withstand up to four bars pressure. HKD systems have a sealing solution for service conduits cast into concrete without the sleeves. They are supplied and ready to use, requiring no site preparation work prior to installation. With options such as KE Socketless service conduits, KG Wall Ducts and Floor Ducts, together with KG Twin Sockets for installation in pump sumps, HKD products are ideal for situations where suitability for thin-walled concrete structures is vital.

**For more information, please see below:
T 01952 510050
www.servicesealingsolutions.co.uk**



Deep hole drilling experts



In this issue of Industrial Solutions, we are delighted to select UNISIG for our Machinery Excellence Award 2024.

UNISIG is an industry-leading American producer of deep hole drilling machines. The company supplies a large variety of customers from aerospace and automotive to energy, firearms, hydraulic cylinders, military, medical sectors, smaller bespoke companies and large original equipment manufacturers (OEM.)

With unparalleled installation capabilities across Europe, Asia and America, UNISIG has the expertise to provide advanced precision-driven machinery for all jobs, with its complete deep hole drilling solutions that range from machinery to tools and automation.

The drilling capabilities include: gun drilling, BTA, counterboring/reaming, trepanning, pull boring, skiving and roller burnishing, bottom forming, bottle boring and much more. With a wide range of stock machinery lines for diverse manufacturing needs, UNISIG can also provide bespoke-engineered machinery across all applications.

The American heavyweight was established in 1981 and since that time, has built up to a pole position across the global industry with its renowned production of gun drilling and deep hole drilling machines. Entrust Manufacturing Technologies acquired UNISIG in 1995 and then moved the company to its purpose-built headquarters in Milwaukee, USA.

Their US Milwaukee facility was expanded by over 100,000 sq. ft. in 2019 to keep up with increased

production capacity demand levels. The CNC grinding machine also supports greater production, alongside regular upgrading across the production facility. The dedicated design engineers at the UNISIG Tech Centre in Milwaukee are more than happy to build customised drilling machine orders, from prototypes to finished machines.

We spoke to Philipp Steimle: Sales and Service manager for Europe to ask more about company developments, "Due to ongoing supply issues, our company is expanding its own manufacturing department. The Kellenberger CNC grinding machine we have installed will allow us to finish all the drilling spindles in-house. We have also installed a laser-cutting machine, a CNC press brake and welding stations so that we can do all the guarding and coolant reservoirs in-house to avoid delays in our machine building."

"The UNE6 series for medical instrument drilling with its fully integrated automation is a game changer for the industry and is proving highly popular in the market. We have, and continue to invest in more in-house production rather than external third parties to keep on top of our orders."

UNISIG is a clear market leader with a commitment to excellence to all customers. From quick machinery and part shipping orders delivered around the world, to meticulous service and repair jobs (conducted on-site and remotely), all jobs are carried out by an expert installation team made up of UNISIG engineers.

The recent addition of two new SSI Schaefer LOGIMAT® vertical lift modules (VLM) in the parts

warehouse have further enhanced the already excellent customer service. The storage units hold up to 28 tons of spare parts each providing welcomed streamlined organisation and tracking. UNISIG operators can now effortlessly access parts inventory on the touchscreen and the VLM moves the correct tray forward, whilst a laser then selects the precise bin and location of the required part. This use of automated technology has optimised the inventory storage capacity and created a smoother, more accurate retrieval system.

UNISIG leads the way in expertly engineered, high-performance gundrilling. Another prime example of this is through the use of the Dual-Spindle gundrilling machine that comes with counter-rotation (UNE12-2-750-CR). This has impressive features that include the two spindles for advanced-precision gundrilling to 12mm in diameter and 750mm in depth, at 12,000rpm. And, with capabilities to produce over 2,000psi coolant pressure, with integrated chip collection system and a touchscreen control panel, the characteristic counter-rotation of cylindrical workpieces provides next-level hole straightness that you've never seen before.

Contact UNISIG to discuss how deep hole drilling equipment would support your business venture today: www.unisig.com



**UNISIG****UNISIG TAKES YOUR
GUNDRILLING
PRODUCTION FURTHER**

Gundrilling and BTA deep hole drilling for highly productive shops.

Whether your shop needs on-center or off-center holes, specialized job shop work or fully automated production, UNISIG has a deep hole drilling solution with the accuracy and performance you need.

Take your shop's production further - learn more
at UNISIG.COM.

Machines • Tools • Automation

UNISIG machines, engineered and manufactured in the USA

UNISIG
DEEP HOLE DRILLING SYSTEMS

BTA Drilling: Brazed Versus Indexable Tooling

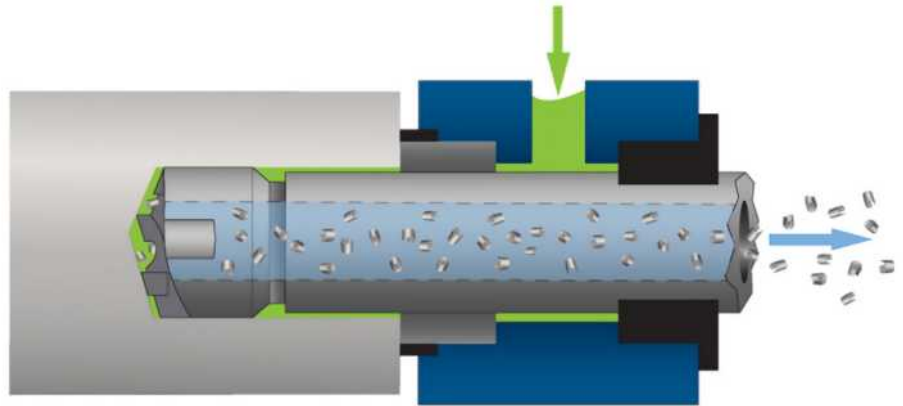
Photos: UNISIG

Deep hole drilling applications can be approached in several ways, but one of the most effective methods is often BTA drilling. BTA stands for Boring and Trepanning Association, although it is sometimes referred to as STS or Single Tube System drilling. Unlike gun drills or twist drills a BTA drill features internal chip removal, which has advantages in both productivity and hole quality.

The BTA drill head has multiple carbide cutting edges and guide pads mounted to it. Open spaces are designed into the head for chip removal, and chips are evacuated through the drill tube the head is threaded onto. Pressurized coolant surrounds the drill head in operation, and is key to forcing chips through the head and out the drill tube. This method of chip evacuation allows for a very clean and reliable process with excellent surface finish and high drill feed rates – typically 5-7 times faster than gundrilling at the same diameter. No peck cycles or feed interruptions are needed, resulting in reduced machine time while drilling extended depth-to-diameter ratios even greater than 40:1.

BTA drills are generally available in two forms: brazed or indexable; and tool selection is dependent upon several factors. As the name implies, brazed tools involve brazing a carbide insert and guide pads onto a steel body, while indexable BTA drilling tools have carbide inserts either directly mounted to the head with a retention screw or seated in a cartridge that is mounted to the tool.

Hole diameter is the initial consideration when determining whether to use brazed or indexable BTA drills. For small hole diameters



– generally 12 to 20mm in diameter – brazed tools are often the first choice as it's difficult to make small inserts and screws strong enough to withstand the torque and forces of BTA drilling. (Manufacturers of BTA drilling tools continue to make improvements in indexable BTA heads as small as 8mm in diameter, however).

Brazed tools offer extremely close tolerances and excellent surface finish as the insert and guide pads are mounted and then ground to the specified diameter, providing almost perfect concentricity and cylindricity. Ease of use is also a benefit – simply attach the head to the drill tube and discard it when it has dulled or failed. If you experience a tool failure, the investment in drill head isn't as costly as repairing or replacing an indexable drill head. Finally, an indexable BTA head can only be as accurate as the tolerance of the inserts themselves; but a brazed head has been ground to a very precise tolerance from the manufacturer.

By contrast, hole diameters starting at approximately 20mm favor indexable tools, primarily for economic reasons. Replacing larger diameter brazed tools is expensive, whereas indexing an insert and guide pads gives an easy extension on the tool's life. Indexable insert manufacturers also offer an exhaustive range of carbide grades, coatings and chip breakers for application-specific advantages.

The placement of the indexable inserts on BTA drill head varies by diameter and by manufacturer, and can include one or multiple inserts mounted directly to the head or set in a heat-treated cartridge, which is then mounted to the head. Guide pads are typically mounted to the head to counter the drilling forces and burnish the hole during drilling. Indexing, or rotating, a direct-mounted insert is as simple as loosening the retaining screw and turning the insert to expose a fresh cutting edge. If the insert and pocket were made with tight tolerances, your cutting diameter should remain reasonably consistent.

Cartridge-mounted inserts, however, typically incorporate a shim or other adjustment system to allow for a much more precise diameter setting after indexing inserts and guide pads. This process does require additional equipment, however, such as a micrometer and stand or tool presetter – as well as the skills needed to accurately make the necessary adjustments.

Whether you select brazed or indexable BTA drills for your deep hole drilling application, you will be rewarded with high feed rates and process reliability, along with minimal centerline deviation and excellent hole quality.

Further information on all machines and the complete UNISIG machine program is available at: www.unisig.com or follow the company on LinkedIn and Twitter (@UNISIG).



Brazed BTA heads – carbide inserts and guide pads are brazed onto the drill head

Taking you up in the world

Direct Hoist has scaled new heights with the addition of a bespoke training centre at its Lincolnshire site offering both familiarisation and NVQ Level 2 courses in hoist installation.

The company offers training on hoists & mast climbers manufactured by both GEDA and Electroelsa with lifting capacities available of between 200kg and 5,000kg depending on the manufacturers used. The new classroom and training tower facility is used to teach candidates both the theory and practical elements of assembly and disassembly of these manufacturers mast climbers & hoists.

The training courses cover up-to-date industry working practices, legal requirements and working equipment knowledge. The on-site facility includes a 10m high training tower, with capacity for transporting a two-tonne platform hoist, with full load to full height, with expert tutors offering hands-on optimal safety training.

The more experienced industry students are offered a two-day specialist familiarisation course in theory and practical assembly and

disassembly of various lifts, with a further week-long course available for deeper understanding of erecting and dismantling hoists. Students are examined by an external assessor at the end of the course and will receive an industrially-recognised certificate, if successful.

Direct Hoist's recent expansion into training is testament to its industrious, hardworking team, who always go the extra mile. As a committed living wage employer, Direct Hoist sees its workers as the backbone of the company. But it's not only salaries that are supported, Direct Hoist recently trained some of its staff as Mental Health First Aiders, further signalling its commitment to the Workplace Mental Health Charter, through staff wellbeing.

All new trainees are placed on NVQ courses, rigorous health & safety training, and further manufacturer courses. More senior staff hold the NVQ level 3 qualifications, which is viewed similarly to the CSCS gold card on construction sites, and as Rob explains, there are many things to learn, "It's surprising how much there is to learn for hoist installation, even for experienced construction workers and managers. We need to know load calculations, equipment specifications, whether there are any voids below grounds or obstructions (such as telephone lines) above."

"Right from the start, new trainees will learn about the specialised nature of construction hoists – including product types, electrical systems, fault-finding, assembly, disassembly and reconfiguration into alternative layouts."

There are more training programmes planned for the future such as: electrical safety and working at heights. Direct Hoist can help companies scale the heights and take you up in the world.

In May 2022, Direct Hoist became the UK distributor of Electroelsa, an Italian manufacturer of mast-climbing work



platforms (MCWPs), transport platforms, material hoists and construction hoists. Rob Wilson commented, "Electroelsa are a top class manufacturer who are leading the way forward, especially with their hoist & mast climbers having data logging technology so if there is an operational problem on-site, a diagnosis can be carried out remotely from anywhere in the world (if need be) on a PC or app on our engineers phone as it's vital to minimise downtime on-site, while maintaining efficiency, cost and ease of use."

At Direct Hoist's recent open days, the Electroelsa PM46 (MCWP) took centre stage on the 10m training tower and received glowing feedback. Elsewhere the expansion of the Electroelsa hire fleet can now be seen on a city skyline near you, its signature vivid yellow is hard to miss. Direct Hoist's future is looking bright.

For more information, contact the team today:
T 01724 781647
info@directhoist.co.uk
www.directhoist.co.uk



CURTISS - WRIGHT

Leaders in Surface Engineering for Critical Components

www.cwst.co.uk



- **High quality surface coatings**
- **Improve part wear life and performance**
- **Reduce maintenance costs**
- **Standard and tailored specialty coatings**

Range of coating services:

- **Dry film lubricants**
- **Corrosion, chemical & environment resistance**
- **Impingement coatings**
- **Conformal coatings**

Curtiss-Wright Surface Technologies | www.cwst.co.uk

eurosales@cwst.com | +44 (0)1635 279621



Your worldwide freight and logistics partner since 1870

Our mission, quite simply is to satisfy the international freight and supply chain needs of our clients. This has remained a constant ambition since our foundation in 1870.

We continue to take pride in providing a professional and award-winning portfolio of services that are reliable, time/cost-effective, and tailored to the unique requirements of our customers. As one of the first Customs - Authorised Economic Operators in Europe, our focus on service, compliance and supply chain security has been acknowledged as market-leading.

Davies Turner Rotherham offer many unique ways to arrange your shipping requirements. If you have something out of the ordinary, requires special licences, needs packing, heavy lifting or anything out of the 'normal,' contact our Rotherham office who will never refuse to quote on something unusual and will always take on the challenge.



Catering for all your freight needs

www.daviesturner.com/specialist/rotherham-specialists

T 01709 529709 | F 01709 529710

Email rotherhamsales@daviesturner.co.uk

Providing solutions for your force or torque measurement applications

Interface Force is an internationally recognised brand and decades of experience have gone into making Interface manufactured load cells the benchmark for thousands of users around the world, and Interface Force Measurements was established in 1996 by Neil Johnstone.

Based in Crowthorn, Berkshire, Interface Force distributes to the whole of the UK & Ireland, but also overseas, especially into Turkey, Greece and the Middle East. The company is a primary distributor for Load Cells manufactured by Arizona-based Interface Inc., and it also supplies their Torque Transducers, associated electronics, multi-axis load cells and the XSensor Pressure Mapping systems.

The global Interface Inc. is represented by a large network of distributors outside of the US, and they have requested products that are designed and manufactured in metric, with the precision and accuracy of all Interface products. These products are designed for an international buyer and user, and all specifications are in metric specs, a global standard for force measurement products.

Interface Force work mainly with aerospace, automotive, and motorsport companies, and Business Development Manager Tony Rokins told us, "We work closely with companies which are undertaking research into product development, and so this includes universities and also medical companies who need load cells for weighing saline bags – we have a very wide and varied client portfolio."

In this crowded industry, Interface load cells and torque sensors have a hard-won reputation for reliable, accurate and repeatable test results. The range of pressure sensors and pressure mapping systems from industry leaders GP50 and XSensor back this reputation.

Tony continued, "With regards to force measurement, our load cells are preferred by aerospace companies because they are highly accurate, and the results are very repeatable. Also, the devices themselves are extremely reliable and so they are looked on very favourably by both automotive and aerospace manufacturers in particular."

Interface Force is currently re-launching its XSensor High Speed Pressure Mapping System – the company offers a range of pressure mapping systems that can be applied to anything from impact testing to pressure testing tires, runways, beds,



seats and much more. The XSensor system is the first system design to allow product designers and safety testing engineers to see, record and evaluate the distribution of force from high-speed impacts on safety equipment such as helmets and body armour.

The system is particularly popular with automotive and aerospace seating manufacturers as evaluating the performance of helmets and other protective equipment designed to prevent injury requires detailed understanding of the pressure distribution on the body surface during dynamic impacts. Xsensor's high speed HS Impact system combined with the thin conformable sensors allows customers to accurately measure those pressures and evaluate how different design configurations affect pressure distribution on impact.

In addition to this, the system is also used by manufacturers of office seating, companies that develop seating for the home, and bed manufacturers.

In spite of its success in the industry, Interface Force is very much looking to future development.

Tony informed us, "We are building new Applications which are based around renewable energy, and we are also developing Cloud-based, Wifi and Bluetooth data acquisitions by making our devices wireless. This would mean customers being able to collect data from anywhere in the world via an App."

This ever-growing comprehensive range of indicators, signal amplifiers, data loggers and wireless transmitters has been designed to complement the extensive range of load cells, torque transducers and pressure sensors, and the range has developed to ensure that customers have access to the most accurate, up-to-date, and cost-effective devices available.

Another new development is in the Airport environment, where Interface Force have begun to provide wireless monitoring of equipment on, for example, luggage carousels, and this product among many others have helped Interface Force to have a very successful past 12 months especially.



For more information, please see below:
T +44 (0)1344 776666
info@interfaceforce.co.uk
www.interfaceforce.co.uk



Continuous Remote Monitoring



Three years time storage

3 years rolling data retention



Live dashboards

Create real-time dashboards to analyze data and control devices



Events engine

Keep operators on-the-ball and informed



Synthetic Variables

Transform raw data into insights



User management

Build applications to best fit the operator's needs

Interface Force Measurements Ltd

Ground Floor, Unit 19, Duke's Ride, Wellington Business Park
Crowthorne, Berkshire RG45 6LS

Tel: +44 (0)1344 776666 | Email: info@interface.uk.com | www.interface.uk.com

Biogas & Ventilation



Specialising in quality equipment for tank storage, process safety, and fluid transfer, we offer dedicated maintenance and expert technical support. Rooted in our commitment to you and the environment, we champion emission reduction and quantification, merging efficiency with ecological accountability.

T +44 (0)1726 844707
info@assentech.co.uk
www.assentech.co.uk

Farming



A small 18-acre working family farm in the market town of Oakham, the county town of Rutland, England's smallest county.

T 01572 722122
admin@rutlandfarmpark.co.uk
www.rutlandfarmpark.co.uk

Roofing



We have been at the forefront to design, innovate and manufacture materials and products to make buildings and flat roofs watertight. As the world above and below the roof is constantly changing, so do we to adapt and offer sustainable, durable and easy-to-install roofing and facade systems.

T +44 (0)1623 627285
info.uk@ccm-europe.com
www.ccm-europe.com/gb



Fabrication & Powder Coating



Established in 1992, GLW is a well established and respected provider of general fabrication to architects, structural engineers, business and private customers. This year, we are celebrating 31 years in business.

We specialise in custom build objects in metal, built to a very high standard in our modern workshop.

T 01945 464637
info@glwengineering.co.uk
www.glwengineering.co.uk



Architectural Glass



A leading Architectural and Structural Glass contractor in the Ford area. We are a team of skilled professionals who tackle everything from complex large projects to smaller scale jobs.

T 01903 733206
info@demon-designs.co.uk
www.archglass.co.uk

Machine Knives



A reputation for high quality machine knives, with over 25 years of experience, which we supply to industries throughout the world.

T 01454 322178
sales@camb-knives.co.uk
www.camb-knives.co.uk

Metal Improvements



Curtiss-Wright surface technologies provides customers a single-source solution and point of contact for all their controlled material surface treatments, supporting their requirements through our global network of over 70 worldwide facilities and on-site field teams, improving and reducing turnaround times and costs.

T +44 (0)1635 279621
eurosales@cwst.com
www.cwst.co.uk



Industrial Applications



Working with light since 1931, CML is the market leader in the field of miniature lighting for signalisation. As one of the first companies to introduce LED lamps, nearly 30 years ago, CML is now the supplier with the broadest range of miniature lighting products in the world.

T +44 (0)1284 714700
uksales@cml-it.com
https://cml-it.com/en



Online Training



Wise Global Training Ltd
Wise Global Training offers flexible and cost-effective online health and safety training from globally recognised awarding bodies such as NEBOSH and IOSH. If you need a fast and cost-effective way to gain your qualification, our online training is perfect! We also offer short online awareness courses to help tick those boxes for your staff training. Contact us today for more information. We are here to help you succeed!

T +44 (0)1482 211989
info@wiseglobaltraining.com
wiseglobaltraining.com

Air Pollution Control Systems



ERG Air Pollution Control
Providing specialist industrial air pollution control, gas treatment and odour control packages – turnkey supply of the complete system: design, supply, installation and commissioning – all backed by a process guarantee.

T 01403 290000
info@ergapc.co.uk
www.ergapc.co.uk

Sensing & Control Devices

BRITISH ENCODER PRODUCTS COMPANY

British Encoder Products Co. is the European Branch of the Encoder Products Group, a worldwide manufacturer of motion sensing and control devices serving the diverse needs of its global customers. We are a customer-driven company that is responsive in the areas of customer service and technical support.

T +44 (0)1978 262100
encoder.co.uk



Electrical Products

Gromtec europe simon

The SIMONBOX IP66 watertight floor box is designed for use in hard floor areas which require occasional power and data connection and an IP protection rating. Typical ip66 waterproof floor box installations include Department Stores, Airports, Train Stations and Car showrooms.

T 0203 286 7949
simonbox.co.uk



Sealing Solutions



Service Sealing Solutions Ltd

Service Sealing Solutions are the sole UK distributor for the sealing industry's top manufacturers; DOYMA and HKD.

Contact
T 01952 510050
www.servicesealingsolutions.co.uk



Measurement Applications




Interface
FORCE MEASUREMENT SOLUTIONS

Interface Force Measurements Ltd is the master distributor for Interface load cells in the UK, Ireland, Middle East and North Africa. While we are separate companies, our interests and values are closely aligned in a long-term commercial relationship spanning over 30 years.

T +44 (0)1344 776666
interfaceforce.co.uk


Emission Monitoring & Gas Control



ECO PHYSICS

ECO PHYSICS AG offers innovative analytical solutions for measurement tasks in the fields of environment, health and process control.

T +41 55 220 22 22
info@ecophysics.com
www.ecophysics.com



Hand Protection



MANOSUN

Manosun hand protection want to bring a change to the end-user experience in selecting and buying industrial gloves, gauntlets and sleeves (PPE).

Contact
T +44 (0)191 300 8699
sales@manosun.co.uk
www.manosun.co.uk





Rutland Farm Park is a small 18-acre working farm in the market town of Oakham, the county town of Rutland, England's smallest county.

We are open all year round for you and your family to explore our tracks and meet and feed our wonderful and friendly animals.

Opening Times Summer

Tuesday – Sunday 10am–5pm
(Last entry at 4:30pm)

(Summer opening times start when the clocks go forward in March and Winter opening times start when the clocks go back in October)

Winter

Monday – CLOSED
Wednesday – Sunday 10am–4pm
(Last entry at 3:00pm)

Open on Bank Holiday Mondays
Closed Christmas Day and
New Years Day

Admission Prices Farm Park Admission

Adult 13+	£9.50
Child 3–12	£8.50
Under 3	Free
Family ticket	£33.00

(2 Adults and 2 Children/1 Adult and 3 Children) We offer 10% Military discount with a valid ID

Annual Passes

Adult 13+	£82.00
Child 3–12	£73.00

Annual Passes are valid for 1 year from the date of purchase



Please visit www.rutlandfarmpark.co.uk,
contact **01572 722122** or
email info@rutlandfarmpark.co.uk

