

# INDUSTRIAL SOLUTIONS UK

ISSUE 667 • August 2023

[www.solutionspublishing.co.uk](http://www.solutionspublishing.co.uk)



[www.facebook.com/solutionsuknews](https://www.facebook.com/solutionsuknews)



[@Publishing\\_2016](https://twitter.com/Publishing_2016)

## THE HEALTH PROFESSIONAL IN COURT

10 principles for practice....see 6-7

### Includes BUILDING UPDATE

Featuring a wide variety of companies from across the UK and Europe, from Builders to Landscaping.

### IN THIS ISSUE

**UNISIG**  
see pages 4-5

**Lauda Technology**  
see page 9

**Watlow**  
see page 10

**Service Sealing Solutions**  
see pages 10-11

**Oliver Valves**  
see page 13

**Harlequin Floors**  
see page 15

**Manosun**  
see page 20

**Davies Turner**  
see pages 22-23

**Bartels & Vedder**  
see page 24

### BUILDING UPDATE

**Vandecasteele**  
see pages X-XI

*J.W. Rodney Peyton*

# Whats Inside

- 03** Red Herring Events  
Events
- 04** UNISIG  
Deephole Drilling
- 08** Eco Physics  
Company of the Year 2023
- 12** Direct Hoist  
Hoists
- 14** Abacus Flooring  
Company of Choice
- 16** GLW Engineering  
Fabrication & Powder Coating
- 18** Wise Global  
Training  
Online Courses

Sponsored by **Davies Turner** 22-23

## BUILDING UPDATE

- II** Carlisle CM Europe  
Roofing
- IX** Checkedsafe  
Compliance Solutions
- X** Vandecasteele  
Timber
- XII** Kedel  
Eco-Friendly Plastic Products
- XIV** Tuff Stuff Water  
Proofing  
Roofing Products & Services

# Contents

## Issue 667

### On the Cover Peyton Medico



06-07

## Editors Comments

### Hello & Welcome to Issue 667 of Industrial Solutions UK!

The team at Industrial Solutions UK has been working extremely hard to bring you an issue that is full of innovative and exhilarating companies and we are very excited to share their success and achievements with you.

We have searched the length and breadth of the UK to bring you some of the most ground-breaking innovations and this month, we are overjoyed to be highlighting the activities of Peyton Medico and Eco Physics.

Firstly, we would like to focus on the accomplishments Peyton Medico who this month features on our front cover!

Secondly, we are featuring Eco Physics with the 'Company of the Year' profile following their impressive performance over the years. For more information, turn to page 8.

I hope you enjoy reading this issue of Industrial Solutions as much as we have enjoyed bringing it to you. Happy reading and we hope to see you for the next edition!

**Ian Hayward, Editor**  
INDUSTRIAL SOLUTIONS UK

## Contacts

**Editorial**  
Ian Hayward, Editor  
T 0121 241 8788  
info@solutionspublishing.co.uk

**Accounts**  
Accounts Manager  
T 0121 681 0935  
accounts@solutionspublishing.co.uk

**Production**  
Production Manager  
T 0121 241 8788  
production@solutionspublishing.co.uk

Industrial Solutions UK is based on the belief that our customers needs are of the highest priority and the utmost importance, with this in mind our team of highly dedicated staff work around the clock to make sure that those needs are always met.

For more information on print or format requirements, please see our [Media Pack](#)

For all advertising & sales enquiries, please contact Ian Hayward on:  
**0121 241 8788**, email: [info@solutionspublishing.co.uk](mailto:info@solutionspublishing.co.uk) or visit:  
[www.solutionspublishing.co.uk](http://www.solutionspublishing.co.uk)

FIND US ON:



Download on the  
App Store



## Increased productivity with collaborative application

**O**кура Kogyo is a Japanese manufacturer of logistic equipment and systems. Their offering includes design, manufacturing, installation and maintenance of conveyors and conveying systems.

### The Challenge

At Okura Kogyo, the staff would manually load and unload workpieces (rollers) from the processors to trolley. The manual process needs to be done carefully to avoid damaging the

workpiece. Like other manufacturers globally, the company is also facing labor shortages.

### The Solution

Collaborative application is a clear choice for Okura Kogyo.

Combining OnRobot VGC10 gripper and Omron cobot, the manual processes of loading and unloading workpieces are fully automated.

The VGC10 gripper has a customised fixture with 4 suction cups and is programmed to handle 2 rollers at a time to match the production cycle.

**T +45 53 53 57 37**  
**vikram.kumar@onrobot.com**  
**<https://onrobot.com/en>**

**Click the video on the case study page:** <https://onrobot.com/en/increased-productivity-with-collaborative-application>



## Sensing & Control Devices

**Revolutionizing Precision and Control:**  
**The power of encoder technology.**

Whether you're in robotics, automation, or medical equipment, encoder technology gives you the power to make smarter decisions and optimize performance.

*Over 50 years of experience*

**BRITISH ENCODER PRODUCTS COMPANY**

W: [www.encoder.co.uk](http://www.encoder.co.uk)  
 T: +44 (0)1978 262100  
 E: [sales@encoder.co.uk](mailto:sales@encoder.co.uk)

**SUPPLYING THE EVENT INDUSTRY**

**CROWD CONTROL & POLICE MET BARRIERS, TEMPORARY FENCE & HOARDING PANELS**

Working in connection with LPH Concerts & Events | Leicester City Council | MSV Donnington Park | VW Music | LOROS | Leicester City Football Club

We can also provide a full service of delivery, install, de-rig and collection. Nationwide service available. No job too small.

[www.redherringeventservices.co.uk](http://www.redherringeventservices.co.uk)  
 charles@redherringeventservices.co.uk  
 01652 640 426 07860 950 894

## Events

### Providing fencing and barrier solutions for the nation



**T**he Coronation of King Charles III was the highlight of this year's social calendar for many British and Commonwealth people around the world, and Red Herring Event Services is the first company that has served the previous Monarch Queen Elizabeth II and King Richard III of England with crowd barriers.



This highly successful company was first established in December 2006, by Charles Herring who has an extensive trade background in scaffolding. Beginning with event services for Leicester City Council in 1989, the company has snowballed: diversifying into other event areas.

Red Herring Event Services has provided fencing solutions for a range of events, from prestigious, sporting occasions like MSV Donnington Park, to high-profile music events such as the X-Factor and Live Nation (Music) UK.

With health & safety being a prime concern at large-scale public events: the company provides industry-leading fencing and barrier solutions that cover a variety of perimeter measurements. The extensive product range includes: Crowd Control Barriers 2.3m, Steel Shield Hoarding 2.1m, Temporary Fencing 3.5m, and Police Met Barriers 1.5m.

The Police Met Barriers are precision-designed for large-scale public events, with the galvanised steel barriers providing optimal public safety. The Red Herring team are able to assemble and disassemble the barriers quickly, efficiently and safely, with priority given to pedestrian and spectator safety.

For added festival security, the Anti Climb Temporary Fencing 3.5m x 2m is designed to prevent opportunists from climbing the fence for a free ticket. Using cutting-edge technology, the anti-climb modular mesh properties prevent climbers. With a range of different stabilisers, festival organisers can add bespoke finishings, and with capacity to use 10.5km of fencing and 3.5km of crowd control barriers: all large-scale events are covered.

Charles Herring and his trusted team can provide fencing and barrier solutions all over the country, seven days a week, offering a full turnkey solution.

**To enquire about fencing or barriers today, see the details below:**  
**T 07860 950894**  
**[charles@redherringeventservices.co.uk](mailto:charles@redherringeventservices.co.uk)**  
**<https://www.redherringeventservices.co.uk>**

## Office Space to Rent



### OFFICES TO LET

**Carlton House** 68 Conway Road, Colwyn Bay LL29 7LD

- High quality office accommodation
- Available individually or as suites
- Excellent location in the heart of the Colwyn Bay Office Community
- Close to the A55 in the centre of the North Wales Coast
- Special concessions for start ups
- Leases available from just 6 months
- Easy In - Easy Out terms



### TO LET

**A PRESTIGIOUS SUITE OF OFFICES**  
**Hanover House** St. Asaph LL17 0LT

- Also available individually from just £25 per week
- Convenient location adjacent to the A55 motorway
- On site parking
- Special deals for Start-Ups
- Excellent facilities including FREE use of the conference room
- Opportunity to expand your growing business as required
- Attractive gardens
- 24/7 Access



### OFFICES TO LET

**Somerset House** 30 Wynnstey Road, Colwyn Bay LL29 8NB

- High quality office accommodation
- Available individually or as suites
- Excellent location in the heart of the Colwyn Bay Office Community
- Close to the A55 in the centre of the North Wales Coast
- Special concessions for start ups
- Leases available from just 6 months
- Easy In - Easy Out terms

For more details call Jean on: **07789 348817** or email: [jean@hanoverbc.co.uk](mailto:jean@hanoverbc.co.uk)

Hanover Business Centres Ltd providing quality offices in Conwy, Colwyn Bay and St Asaph.



# UNISIG's approach to Automating Surgical Instrument Manufacturing



Photos: UNISIG

As surgical instrument manufacturers pursue greater throughput while facing increased labor costs, automating the medical instrument manufacturing process has become a necessity. However, integrating automation into the gundrilling process for drilling deep holes in extremely precise surgical instruments in lights-out operation is a major engineering challenge requiring more than simply pairing a robot with a deep-hole drilling machine.

The right machine, tools and process must all come together to create small holes with extreme precision in difficult-to-machine materials such as titanium and surgical stainless steel. More importantly, the entire system must flow from a unified concept where the whole is greater than the sum of its parts.

To meet these challenges, UNISIG developed its UNE6-2i-750-CR dual independent spindle gundrilling machine. The UNE6-2i is capable of gundrilling hole diameters ranging from 0.8–6mm in part lengths measuring up to 30 inches with depth-to-diameter ratios from 20:1 to more than 100:1. The machine has a maximum combined drilling speed of 28,000 rpm and a 3,000psi (207) bar programmable flow-based coolant system with dedicated pumps for each spindle to ensure precise coolant pressure control.

Automating hundreds of cycles of precision manufacturing, however, is not possible unless the overall operation is considered from the outset. Surgical instrument manufacturing is a sequential process: parts must be loaded into the machine in a particular way for specific operations that happen in a specific order.

Workpiece length, shape and configuration determine where it is gripped by the robot when loaded into a machine, moved from spindle to spindle for drilling, residual cutting fluid removed, and returned to the



pallet. Where a part is gripped impacts where it is clamped for drilling to ensure accuracy. Every variable along the process chain must be considered and accounted for, and the calculus is detailed and complicated.

Then there are unique customer needs and requirements. The equipment and process must accommodate a variety of part families and hundreds of parts to increase runtime and efficiency. Operators must be able to change over part types and programming without calling in an automation specialist, and the entire process must be controlled from a central interface. Add to the mix that everything must be packaged in as small a footprint as possible, and the scope of the engineering challenge comes into focus.

UNISIG's approach to solving these problems, however, results in targeted automation that enhances the existing

benefits of gundrilling, ensuring a solid foundation for reliable process-wide automation.

At its core, the automated UNE6-2i is a purpose-built machine with automation embedded in its design, not added as an afterthought. Flexibility and adaptability are maximized by a harmonious, interdependent mechanical, software and operational planning scheme.

To meet size constraints, a 6-axis robot was embedded in the machine with a pallet system on the backside of the machine, allowing easy operator access from the front to setup the machine without compromising ergonomics. The configuration enables quick setup changes between prototype and proving operations and full production runs.

The robot automatically repositions the workpiece from the front of the first spindle into the rear of the second spindle without operator input. The process of drilling a part from both ends in a single-piece flow is unique to UNISIG. Workpieces with enlarged features on one side are loaded from the rear of the collet, solving a common problem in gundrilling medical surgical instruments with full automation.

Control of the UNE6-2i and a computer are consolidated into the Human Machine Interface (HMI), a menu-driven touch screen system for easy, intuitive operation. Training and operator engagement with the system is significantly reduced due to user-friendly UNISIG controller menus and prompts.

UNISIG's comprehensive and integrated approach to automating medical part manufacturing is a vision that sets it apart in the industry. It's more than drilling the impossible hole. It's a commitment to understanding and to the research that drives continuous improvement and innovation for automated part production at its full potential.

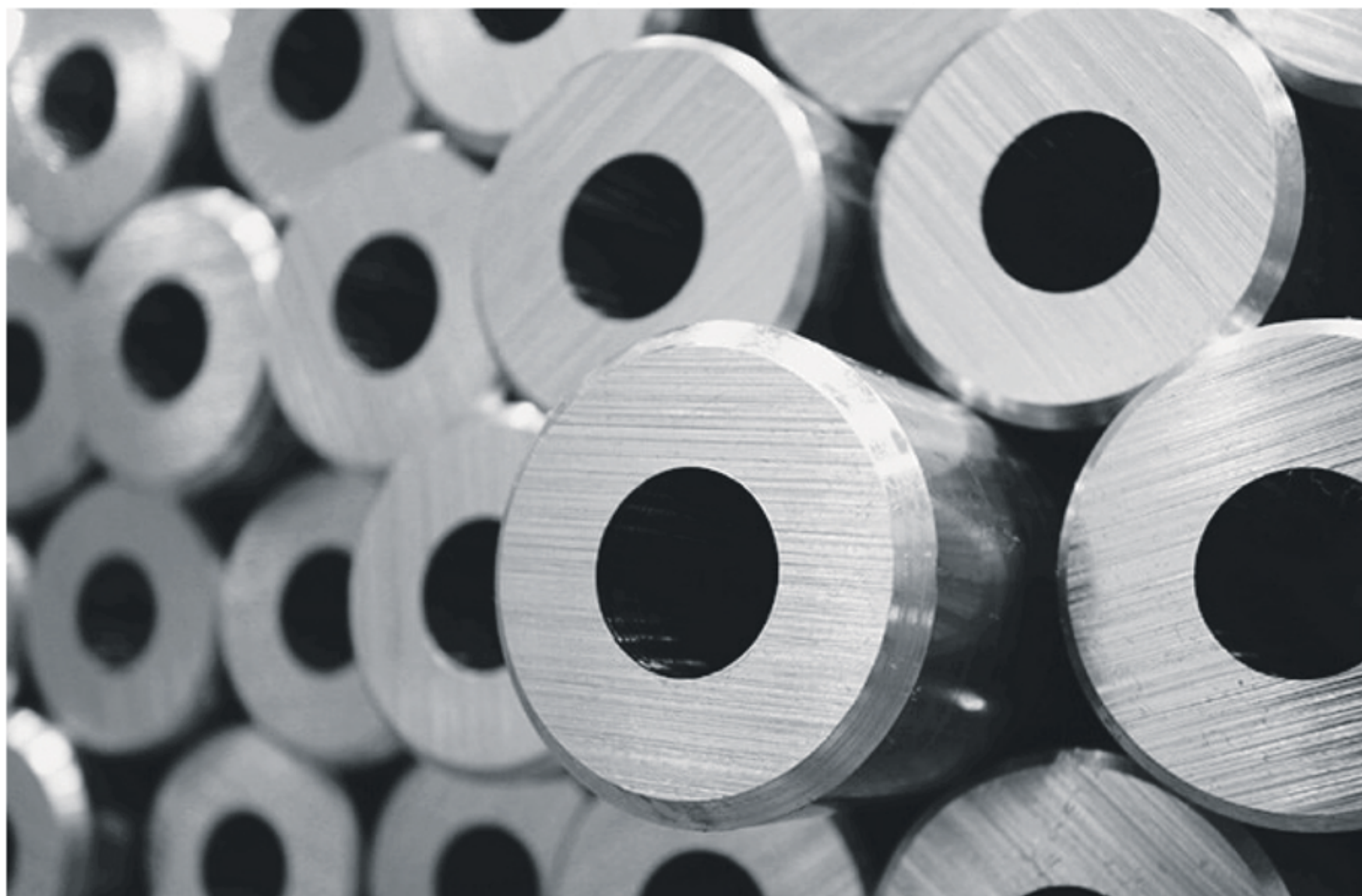
**Further information on all machines and the complete UNISIG machine program is available at: [www.unisig.com](http://www.unisig.com) or follow the company on LinkedIn and Twitter (@UNISIG).**

**You will also meet us at the EMO 2023 show in Hannover, Germany, from 18th–23rd September.**





UNISIG.COM



**UNISIG**

UNISIG TAKES YOUR  
GUNDRILLING  
PRODUCTION FURTHER

**Gundrilling and BTA deep hole drilling  
for highly productive shops.**

Whether your shop needs on-center or off-center holes, specialized job shop work or fully automated production, UNISIG has a deep hole drilling solution with the accuracy and performance you need.

Take your shop's production further - learn more at UNISIG.COM.

**Machines • Tools • Automation**

*UNISIG machines, engineered and manufactured in the USA*



**Hall 13, C21**





# ‘The Health Professional in Court’: 10 principles for practice

**F**or this month’s feature article, we interviewed someone who is acknowledged as one of the world’s top surgical coaches and an international authority in medico legal issues.

**Mr Rodney Peyton, OBE MD is a Trauma Surgeon who has the unique distinction of holding Fellowships in all four Royal Colleges of Surgeons in the UK and Ireland as well as being a Fellow of the Royal College of Physicians in London. He holds a master’s degree in medical education from Cardiff University and graduated in law from the College of Law in London.**

**In his career spanning 40 years, he has been engaged in over 70,000 personal injury cases as well as being asked to advise on more than 3,000 cases involving medical malpractice.**

**He therefore has a wealth of experience in preparing cases for and giving expert testimony in Court and has been involved in the training of doctors and lawyers in dealing with medico legal cases, individually on a face-to-face basis, and also as a trainer and keynote speaker.**

**In this article, he will cover his 10 top strategies to help health professional’s deal with the Court process.**

**He is also a well-known author and international keynote speaker. For his availability to speak at your corporate events, contact him at: rpeyton@rpeyton.com.**

Increasingly, senior professionals from all branches of the healthcare industry are finding themselves involved in the Court system, either on an involuntary basis, as a witness to fact or defendant, or on a voluntary basis as an expert witness.

Gone is the paternalism of ‘the professional knows best’ and there has been more and more scrutiny by the public of professional actions and attitudes.

Leaving aside the criminal law, which is an entirely different situation, civil legal cases are predicated on the fact that within every profession, or branch of profession, there exists a range of opinions as to what constitutes good practice. Defendants and expert witnesses are expected to provide opinions, witnesses to fact are not.

It is important to understand that, while judges are highly trained and experienced in the interpretation of the law, they and the barristers or trial lawyers who argue cases are nevertheless lay people when it comes to the healthcare professions. They are not medical experts and therefore require help in understanding the medical evidence before them. For the health professional, whether as defendant or expert witness, the duty is to assist the Court in their decision-making whilst at the same time maintaining and promoting their own professional integrity and reputation.

Most healthcare professionals rarely appear in Court. From personal experience as a teacher and trainer to those who do become involved, there are recurrent themes, which arise and so the following 10 principles have been developed to help guide professionals through the Court process.

## Record keeping

Keep detailed contemporaneous records.

Any major findings or decisions, whether it be from working with a patient, a client or undertaking a project, should be on record, as one never knows when such



events may become the object of scrutiny. There is an old saying, ‘if it is not written down, it did not happen’ and oral evidence is likely to be regarded as weak and suspect unless there is written evidence to back it up. A little extra time spent in ensuring accurate, contemporaneous recording may save considerable time, effort and indeed stress at a later stage when trying to convince a Court that decision making was sound. Remember, all written communications are discoverable and may be used in Court proceedings. Therefore, it is important not to make any gratuitous comments within the written record.

When acting as an expert witness, always look for original, contemporaneous documentation to back up later oral recall of events. Stick to the facts as presented and derive opinions from them.

## Producing a report

Reports should be timely, factually based and the opinions well-reasoned, taking full account of appropriate legal tests.

When producing a report, clarify whether you are acting as a professional or as an expert and keep the distinction between the two. As a defendant, you will be required to explain your position. It is important you outline any reasonable range of opinion, which informed your decision-making and actions, stating why your own should be preferred, ‘defence being the best form of attack.’

Being a witness to fact is a requirement rather than a choice. If you have been directly involved, provide evidence under clinical findings, observations and actions. Limit evidence to that which has been recorded and remember not to venture opinions or speculate on events.

An expert witness’s function is to help the Court by virtue of their knowledge, training and experience within their professional field of expertise. Reports must not intentionally mislead and any omission of relevant information reveals prejudice, whether acting as a professional or an expert witness. All opinions proffered must be logical, based on recognised clinical evidence and guidelines to include the appropriate standard of care, being clear what was relevant at the time of the incident. Always anticipate counter arguments, addressing them within the body of the report wherever possible and be alert to the potential for your own professional bias. Expert witness reports must be and must be seen to be independent.

Do not revise your report unless you have been subsequently provided with new facts, which need to be taken into account, at which time you must explain why these have made a material difference to the previous conclusions.

## Attendance at Court

Always present as professional and credible.

First impressions count. This includes dressing appropriately for the Court and ensuring you have all your papers with you, particularly when actually giving evidence.

Make sure you take time to prepare thoroughly, highlighting any relevant areas in your report and those of others for ease of reference. Make sure you have taken time to think out potential questions or possible arguments which may be raised and

know your reasoning behind everything you are going to present.

## Court procedure

Be aware of the Court procedure in whichever jurisdiction you attend, while you may be senior in your branch of the health care profession, unless you are highly experienced in Court practice, you are relatively junior in relation to the Court process. This is particularly pertinent for witnesses to fact who may be unfamiliar with legal proceedings.

An expert is engaged because of expertise in a particular subject and must, not only keep up to date in their own field, but also be cognisant of the requirements of the Court process. They are there to represent their point of view and assist the legal process.

It is important they do not come across as overbearing, as they are, in fact, servant/leaders, tasked with educating the Court and therefore must understand what is required from the Court’s point of view.

Constantly strive to improve your presentation skills, for example by giving talks on medico legal issues, so that you are used to standing up and delivering legal points in relation to medical cases.

## Duty to the Court

Your professional duty as an expert or a witness to fact is always to the Court, no matter who engages you or why you have been called to attend.

This responsibility must be taken seriously. The role is to help litigants, their lawyers and the Court better understand the nature of medical evidence in individual cases so they can come to reasonable decisions. In this context, it is important they are helped to understand what acceptable practice was at the relevant time.

Health professionals do not have immunity when giving evidence. Not having this protection has unfortunately meant that some have been at the receiving end of severe public criticism, up to and including the award of costs against them and even a custodial sentence when the Judge considered that, by acts of omission or commission, the Court had been misled. This can have severe implications on personal, professional and financial standing.

## Range of opinion

Always acknowledge there may be a range of reasonably held opinions.

In this context also consider possibility vs probability ‘more likely than not.’ If a matter comes to Court, there is going to be an opposing view from another professional expert who does not fully, if at all, agree with your opinion. Therefore, it is important to cover counter arguments in your considered opinion, which adds to the credibility of the report. The report must contain logical reasoning for accepting or rejecting other opinions and include any references, which are to be relied upon.

Guard against emotional statements and hyperbole and never denigrate others. Very rarely is ‘in my experience’ relevant in Court unless it is thoroughly backed up by objective evidence.

## Credibility

Experts must stay within their field of expertise when giving opinions. They should have a bespoke CV for each case, indicating why they are a reliable expert for the matters at hand. It is in the nature of the Court process that opposing lawyers will try to diminish your credibility and it is wise to have answers for the three questions, which almost every barrister/trial lawyer will utilise at the beginning of an examination.

## These are:

**Do you know your duty to the Court, including your knowledge of relevant legal tests?**  
**Are you an expert on all points on which you are giving an opinion?**  
**Is there a range of opinion, which reasonable and respectable doctors may hold?**



Ensure you are clear on your answers before getting into the witness box. This is all about credibility and as far as possible stay away from arguing about legal, technical and ethical issues.

## Giving evidence

There are three types of oral examination for all types of witnesses, the evidence-in-chief, cross-examination and re-examination.

For Evidence-in-chief, your barrister or trial lawyer will lead you through your report and highlight any specific points relevant to the case. Cross-examination by opposing counsel looks at those points in detail, helping the Court assess credibility and ascertain whether there are in fact other opinions, which are equally valid. Do not get into an argument with the barrister or trial lawyer who is questioning you. Expect to be put under pressure during cross-examination but resist being provoked. Keep calm and answer to the bench. If you feel that your answers are being cut short unreasonably, ask the Judge if you may expand and follow their direction, always coming across as reasonable and professional. After answering the Judge or presiding officer then look back to the barrister or trial lawyer for the next question.

If you are given new information, which you did not have before then say so and, unless the answer is obvious, do not give a knee jerk reaction but ask for time to think it out. If it is not in your field say so and be careful of your own personal bias, again clearly separating fact and opinion. All your reasoning must stand up to logical scrutiny.

Re-examination is led by the instructing party to clarify issues, which have been raised during cross-examination. This phase is usually fairly short and rarely are any new matters raised.

## Keep it simple

Keep all your evidence as simple as possible.

Remember, although the Court consists of lay people, they have considerable expertise and experience in handling different kinds of evidence. Take time to explain the issues at hand in jargon free, transparent terms, the more so if it happens to be a jury trial. Speak slowly, follow the Judge and his/her speed of writing or typing as they will be keeping a record of the proceedings.

## Reflection

Reflect on the outcome.

After the verdict, as an expert do not take anything personally and learn what you need to learn. Similarly, as a witness to fact.

Think over what transpired and take time to reflect on what went well and what could you have possibly done better, or at least differently. As Stuart Emery states, ‘The path to mastery in any subject is to correct, not protect.’

Be open and honest with yourself and always seek to improve your practice as well as in the reporting and delivery of your evidence.

Once you have done so, move on. Civil Courts are not saying you are right or wrong in general terms, they are saying they prefer one set of evidence over another and it is only in the balance of probabilities.

## Conclusion

Whether as defendant, witness to fact or expert witness, the process in civil litigation is the same.

By gaining an understanding and some familiarity with the process, practitioners can develop both confidence and competence in their role of presenting evidence. As an expert, the more often you appear in Court the more competence you gain and therefore the more confident you become.

Healthcare professionals are required ethically and by their professional bodies to continually update their practice, knowing why they do what they do in the way they do it, ensuring practice is evidence-based. However expert you are, you must not become complacent in either your practice or in Court.

Finally, all witnesses must remain neutral, explain the range of opinions, and be aware of their own potential for selective bias in any evidence presented. Courts are reliant on credible, impartial and articulate healthcare professionals and presenting as such impacts greatly on personal, professional and financial standing.

## Contact

**T +44 (0)28 8772 4177**  
**F +44 (0)28 8772 7134**  
**info@rpeyton.com**  
**www.rpeyton.com**





# MR. J.W. RODNEY PEYTON OBE MD

## An Epitome for Experts in the Medico-legal Industry

Medicine is regarded as one of the most dignified professions around the world. The relationship between the doctor and the patient stands on pillars such as trust, confidence, and hope. However, like several other industries, commercialization has largely impacted the medical profession and services as well. Today, there is increasing anxiety both within the medical profession and in society regarding the constantly increasing trends of complaints and lawsuits against physicians.

It is imperative for doctors to be aware of the legal aspects linked to their profession and take precautionary measures to protect themselves and their patients from legal traps. The knowledge of medico-legal issues has become as fundamental to the practice of medicine as clinical skills.

Thus, experts in the field of medico-legal services are in demand presently. While several new leaders have been emerging in recent years, veterans like Mr. J.W. Rodney Peyton OBE MD are still regarded as one of the prominent leaders in the medico-legal sector.

**A Distinguished Career spanning Over Three Decades**  
A Consultant Trauma Surgeon by profession, Mr. Peyton has been driven by a desire to improve surgical practice and ensure better outcomes for patients—throughout his eminent career spanning four decades. He has served as the Head of Faculty Development and Examiner Training for the Royal College of Surgeons of London and has been at the forefront of innovation in the delivery of teaching and healthcare.

Widely regarded as the World's #1 surgical coach, Mr. Peyton has received numerous recognitions. He has received the Werner Korte Gold Medal for services to German Surgical Education in 2002. Moreover, he was bestowed with the Medal of the Swedish Surgical Society for his services to medical education in 2005.

He is also a law graduate and has been involved in medico-legal reporting and court appearances as an expert witness since 1983. He is also a founding member of the Expert Witness Institute and has played an important role in providing an independent expert opinion in cases of potential medical negligence. He has been reported over 70,000 personal injury cases as well as being asked to advise in more than 3,000 cases of potential medical malpractice.

Mr. Peyton's prowess in the medico-legal domain, blended with his avid experience in both military and civilian trauma has been instrumental in him being regarded as an authority on medico-legal



issues. He has been actively involved in training doctors and lawyers in dealing with medico-legal cases—both individually and in professional groups, also as a trainer and keynote speaker. In a conversation with Mirror Review, Mr. Peyton shed light upon what it is like to be a medico-legal expert in today's world and shared some invaluable insights that would help those aspiring to step into the industry.

**A Satisfying Intellectual Exercise**  
Preparing medico-legal reports—according to Mr. Peyton—is a very satisfying intellectual exercise, particularly regarding malpractice, and is one of the best ways of keeping up to date in his field of expertise. "Each case is unique with many twists and turns. Having to think out the pros and cons in any given range of opinions allows the expert to become even more secure in their own practice which can only be for the benefit of patients," affirms Mr. Peyton.

According to him, the best way to learn anything is to teach it. In this case, barristers/ trial lawyers will ask detailed, probing questions to gain a full understanding—requiring the teacher/expert to more clearly understand their own practice and personal biases as they consider legitimate differences of opinion.

**Stay Relevant, Neutral, and Clear**  
As Head of Peyton Medico-legal Services, Mr. Peyton's philosophy is that the objective is to assist those in litigation including the clients, their legal advisers, and the court to clearly understand the nature of medical evidence in individual cases so they can make informed decisions. It is the court's jurisdiction to determine facts under dispute in a case, and the expert opinion guides the court in its deliberations.

While the judges are highly trained and experienced in the interpretation of the law, they—alongside the barristers and trial lawyers—are not the experts when it comes to healthcare professions. They need help in understanding the medical evidence before them. Thus, the expert must assist the court in decision-making. According to Mr. Peyton, any expert must stay relevant in their profession, remain neutral throughout no matter who is responsible for their fees, and must clearly understand their paramount duty is to the court.

Mr. Peyton further mentions it is important to remember innovation in the legal profession is slow and steady. When in the witness box, an expert must not display innovative behaviors in terms of thoughts about managing cases. As the courts are looking for a fair degree of certainty, all the arguments have to be clear, logical, and well-thought-out. "In this case, experts must acknowledge there always exists a range of opinion and clearly announce with an evidential base as to why their opinion should be preferred," he advises.

Furthermore, an expert having personal prejudices or inclinations can sometimes cause confusion and trust issues. Mr. Peyton, however, believes having a personal bias towards a particular method of treatment is not an issue if the preference is transparent and the expert can demonstrate they are prepared to consider and discuss the viability of other options. According to him, experts require the flexibility of mind to review their opinion if compelling evidence to the contrary becomes available.

**Determining the Probability of Success**  
In recent years, medical negligence/malpractice has become one of the major growth areas in medico-legal practice. However, figures from defense organizations suggest that only a few actions actually succeed with a vast majority failing based on causation. As subsequence is not the same as consequence, Mr. Peyton believes that it is important to determine at an early stage the probability of a case to succeed.

To help offset the escalating costs of litigation, Peyton Medico-legal has introduced a provision



of preliminary screening reports to ensure that the elements of duty, breach, and consequential damage are likely to be in place before commissioning other more costly specialist reports. This keeps down the costs for clients and their legal advisors as well as enables lawyers to manage clients' expectations at an early stage at a minimal cost.

**"Lack of Professionalism will not be tolerated..."**  
Mr. Peyton believes that being an expert witness has become more professionalized now than it was when he started. He mentions that courts have tightened up concerning their expectation of witnesses and, of particular importance, has been the loss of immunity from liability for those giving evidence. "Overall, I think this has been for the better. There still tends to be a lot of exaggeration, if not outright fraud, inflicted within the claims industry," he asserts.

The business environment in personal injury cases—with an added emphasis on financial compensation—can induce a tendency to discard facts for portraying the claimant's case in the best way possible. Unfortunately, this has been enabled by some medical practitioners who fail to understand their duty is towards the court and not to those instructing them. This can lead to the defamation of professional medico-legal experts and can have a severe impact on their personal, professional, and financial well-being. Mr. Peyton adds, "The message is clear. Such a lack of professionalism will no longer be tolerated."

**Why do Medical Mistakes Occur?**  
Alongside a lack of professionalism, there are several other mistakes medico-legal experts make. Expressing his views on those mistakes, Mr.

Peyton says, "It is in the way in which decisions are made." According to him, there are three primary types of logical reasoning—deductive, inductive, and abductive. Deductive argues from the general to the specific and if the generality is correct, then the specific is correct. "For instance, if I have a jar of white marbles and I take the marbles from the jar, then those marbles are liable to be white. In court terms, this is the doctrine of res ipsa loquitur," he adds.

Inductive logic, on the other hand, starts from the specific and works back to the general. Mr. Peyton illustrates, "If I have five white marbles in my hand and they came from a specific jar, then all marbles in the jar are liable to be white." This, however, may not be true and is the basis of the null hypothesis in statistical research. Thus, papers that states results "nearly reached significance" have to be handled diligently. They either reached significance or they didn't and the problem in the law is arguing with a specific bias and producing only evidence that equates to one side of the argument.

At last comes the abductive reasoning. "For instance, if I have white marbles in my hand and there are white marbles in the jar, then the marbles in my hand came from the jar," states Mr. Peyton. This is a big step and is one of the major causes of medical mistakes where a set of symptoms are assumed to indicate a particular disease process. "This is a cognitive bias where alternatives are not even considered in spite of evidence to the contrary," he adds.

**For more information or any queries on Medico-Legal issues, please visit: [www.rpeyton.com](http://www.rpeyton.com) to schedule a complimentary consultation**



# ECO PHYSICS AG develops new three-channel chemiluminescence analyser (NO/NO<sub>2</sub>/NH<sub>3</sub>)

In this issue of Industrial Solutions, we are pleased to feature ECO PHYSICS AG as our Industrial Emission Monitoring and Gas Manufacturing Control Company of the Year.

ECO PHYSICS AG offers innovative analytical solutions for measurement tasks in the fields of environment, health and process control. Using its vital expertise and technology to contribute towards environmental preservation, human health, and industrial innovation, ECO PHYSICS' interdisciplinary research and development team work tirelessly to deliver the best customer orientated and tailor-made products and services for the industry.

Founded in 1990 through a management buy-out, ECO PHYSICS stands strong today as an independent Swiss shareholder's company with an active board of members who are committed to the future growth and success of the company. We spoke to Dr. Grischa Peter Feuersänger, Head of Sales & Marketing who explained how the past 12 months have fared.

"We have received a positive recovery post pandemic. Many public projects were reopened which generated a lot of opportunities for new references. The war in East Europe is a new tough challenge to overcome, especially for companies that rely almost completely on importing parts and exporting their finished products. But the main challenge for all of us has particularly been the manufacturing costs, shipping routes and exchange rates. Since 2022, we have used this time to expand our product portfolio

and modernise our production line. New staff has been hired for production and R&D, and we have rearranged the supply chain due to the rise in production costs. We have adapted our yearly forecast to cater to this, we know it will be hard, but optimisation is our current goal."

Knowing there is no quick fix to economic changes, ECO PHYSICS is determined to continue innovating and has developed a new three-channel analyser based on chemiluminescence. As an upgrade from the The nCLD AL2, The nCLDAL3/8555 CY analyser is the next generation in high precision nitrogen oxide measurement. Unique in speed and reliability, the nCLDAL3/8555 CY is modular designed and capable of simultaneously NO, NO<sub>2</sub>, NO<sub>x</sub>, NH<sub>3</sub> and NOX-Amines. The new and intuitive graphical user interface also individually displays and connects to other instruments' data.

Overall stability and reliability are lifted to a new level. The optional electro-mechanical bypass system balances out even the fastest of pressure variations occurring in the sample flow. Furthermore, the analyser is adaptable to numerous non-standardized applications and the calibration of the unit runs quickly and automatically with all necessary data available anywhere at any time. Its user friendly, compact, modular, and intelligent hosting its own CPU whilst enabling interaction with other CPUs by BUS-communication.

Additionally, ECO PHYSICS has also been developing upgrade kits for all its existing products to help counteract some of the problematic complications the supply chain has caused. "We have used this chance for some substantial upgrades in hardware, software and gas flow controls," added Dr. Grischa Peter Feuersänger.

Going forward, ECO PHYSICS is excited to continue working on optimising production workflow whilst simultaneously expanding its current portfolio and developing new technologies.

In closing, we asked Dr. Grischa Peter Feuersänger how the company felt receiving our award. He responded, "We are extremely honoured to be nominated, thank you."

**For more information, please see below:**  
**T +41 55 220 22 22**  
**info@ecophysics.com**  
**<https://www.ecophysics.com>**



## ECO PHYSICS nCLD boxed solutions

### AL<sup>3</sup>



Ambient Air  
Specialty gases

Measurement of:  
NO • NO<sub>2</sub> • NO<sub>x</sub> • NH<sub>3</sub>

Compact analyzer with integrated pump

Simultaneous NO, NO<sub>2</sub>, NO<sub>x</sub> and NH<sub>3</sub> measurement

Intuitive graphical user interface

Internal data logger and status recorder

Remote operation/control, Power DOWN/UP

USB, HDMI, LAN/WLAN, Bluetooth, RS-232, Analog I/O

The world's first three-channel chemiluminescence based nCLD box-solution analyzer detects NO, NO<sub>2</sub>, NO<sub>x</sub> and NH<sub>3</sub> at concentration ranges from 0 - 50ppb to 0 - 50ppm with a minimal detection limit from 0.4ppb. The unique three-channel nCLD AL<sup>3</sup> includes an internal pump and comes as a fixed and pre-configured analyzer. The slightly modified front panel has been equipped with an additional Power-button and a new internal PC. Additionally, are all nCLD-models capable of a remote power down/up including a failsafe feature. The nCLD AL<sup>3</sup> is the ideal instrument for ambient air monitoring, either installed in racks, fixed monitoring stations or mobile laboratories. The instrument's inlet operates at ambient pressure. Calibration of the unit runs quick and automatic while all necessary data is continuously stored and readily available anywhere and at any time. Based on the nCLD AL2, which is QAL1 certified according to ISO EN 14211.



ECO PHYSICS AG • POB • CH-8635 DUERNTEN • TEL +41 55 220 22 22 • FAX +41 55 220 22 55 • E-MAIL [info@ecophysics.com](mailto:info@ecophysics.com) • [WWW.ECOPHYSICS.COM](http://www.ecophysics.com)



## Future Integrated

The new Integral process thermostats from -90 to 320°C

**L**AUDA Technology is advancing the connectivity of temperature control technology with the new Integral process circulators.

Thanks to the modular interface concept and intuitive operation via the integrated web server, they are more user-friendly than ever. Thanks to a clever interface concept and integrated bypass, the LAUDA Integral allows for maximum flexibility. The newly developed, superior cooling technology guarantees maximum process reliability in accordance with the European F Gas Regulation.

Our Integral process circulators are your reliable partner for development and quality assurance. Whether testing batteries, fuel cells, or electronic components, our LAUDA Integral will bring your test bench to the right temperature. The device design is also focused on user-friendliness: easy service access, clear operation, and

simplified installation.

With its highly dynamic, precise temperature control, high connectivity and improved pump performance, your research and pilot plants will be sustainably fit for the future.

**T +44 (0)1780 243118**  
**info@lauda-technology.co.uk**  
**www.lauda-technology.co.uk**



# LAUDA

**EXPERTS IN PRECISE TEMPERATURE CONTROL**  
Industrial & Laboratory Solutions



LAUDA Technology Limited provides class-leading expertise in pre-sales and post-sales for applications requiring precise heating and cooling solutions, ranging from -150 to +550°C.



These solutions can apply to multiple product stages, from research and development through to pilot plant, full production lines and quality control.



Working within a diverse range of industry segments, LAUDA Technology Ltd focuses particularly on automotive, aerospace, chemical, biotechnology, pharmaceutical, medical, digital printing and food and beverage application solutions.

**info@lauda-technology.co.uk**  
**+44 (0)1780 243118**  
**www.lauda-technology.co.uk**

## Bringing technologies to market that improve packaging automation

# Weber

## PACKAGING SOLUTIONS

**W**eber Packaging Solutions provides high-quality labelling and coding solutions for all industry sectors of the UK market, for any surface and shape imaginable. The company also supplies Barcode software and operating supplies such as labels, colour ribbons or ink that enhance the product range, and also provides exceptional customer support services with suitable financing and customer training.

Weber Packaging Solutions is a leading innovator in the design, engineering, manufacture and supply of high-performance pressure-sensitive labels, labelling systems and continuous ink jet systems. For over eighty years, it has been bringing innovative products to customers and helping them to solve their labelling and coding problems.

At its 5,000-square-metre manufacturing and customer service facility,

its knowledgeable staff are capable of addressing all labelling and coding requirements. The countrywide network of sales, customer service and technical support specialists, in addition to its constant commitment to quality, has maintained the company's position as a reputable leader in the industry.

Weber Packaging Solutions aims to work as partners with each of its customers, to establish an understanding of each application and how it can be best realised to improve your business. The efficient, high-speed label presses and extensive library of dies means that it has the capability and diversity to assemble a complete solution for your labelling application.

**For more information, please see below:**  
**T +44 (0)1875 611111**  
**sales@weber.co.uk**  
**www.weber.co.uk**



# Weber

## PACKAGING SOLUTIONS



**Weber Packaging Solutions are a Global Leader in Labels and Labeling Systems, Originally established in Illinois Chicago in 1932 Weber Packaging Solutions has grown to a large International Company with facilities worldwide capable of manufacturing Blank and Printed Self Adhesive Labels for many Industries from Food to Pharma, Automotive to Logistics and many other verticals too numerous to mention.**

**sales@weber.co.uk**  
**+44 (0)1875 611111**  
**www.weber.co.uk**

## 4/4: Offline buffering for maximum efficiency

**M**any production lines have one or more machines that need to be stopped and restarted frequently, greatly affecting line efficiency.



Depending on the situation, an accumulation system can be used to hold items in place while the machine is stopped. This prevents the items from backing up and slowing down the rest of the production line.

### Project details:

- Offline accumulation
- AccuVeyor AVo 90 meters of accumulation
- This translates into 8 minutes of extra storage.

**Video: <https://www.youtube.com/watch?v=snHEMhMgyk8>**

This customer sought a simple but effective way to buffer their product flow. As is often the case with cartoners, small stops and jams were common at their layout and significantly impacted the efficiency. In case of one of those micro stops, the line needed a buffer big enough to give the engineers the time required to fix the problem.

The AmbaFlex SpiralVeyor was the ideal solution. Not only do AmbaFlex spirals have a compact footprint, but with the patented triple-e technology, they also have the unique ability to push the performance and increase height while lowering energy usage and maintenance costs.

In this case the AccuVeyor AVo, with 90 meters of conveyor belt, gives the line 8 minutes of extra time. Once there is a downstream stop, the first switch gets a signal to divert the products 'offline' to the Spiral.

**AmbaFlex, elevating customers to greater heights!**

**<https://www.ambaflex.com>**

## BTM Automation – Produce more with less work

**B**TM Automation Products (UK) Ltd is a specialist provider of sheet metal clinching machines, hydraulic press machines and pneumatic press machines, and has



encompassed over 40 years of experience within the industry and offers unrivalled complex designs and high-quality standards within a global market.

BTM Corporation of Marysville, Michigan was founded in 1966 by Mr. Ed Sawdon & Mr. Milus Allison as a manufacturer of bending machines for the automotive and appliance industries. The initials BTM were coined as an abbreviation for 'Bending Tools & Manufacturing.'

From simple tools to advanced automation, BTM supplies solutions for its customer's production requirements in mechanical joining technology, and these may range from standard tools to modular handheld tools up to customised systems.

The company places particular emphasis on providing support to all customers. From the production of prototypes and support for a clinch optimized process, with professional engineering and during the whole general project support from the first sampling to delivery and maintenance, it works closely together with customers.

From initial enquiry through to commissioning, BTM offers a full and complete package. Its expert specialist engineers are trained in the automotive, lighting, heating, white goods and many other industries. The company's main product is its flagship technology 'Tog-L-Loc', the sheet metal clinching technology that is simple, economical and an efficient solution to your metal joining needs. After the introduction of the original toggle press Mr. Sawdon developed Tog-L-Loc® as an alternative to spot welding, riveting and other conventional methods of joining.

**For more information, please see below:**  
**T +44 (0)1767 677001**  
**btmautomation@btconnect.com**  
**www.clinching.co.uk**



# The UK's number one sealing solutions provider

Industrial Solutions is proud to announce Service Sealing Solutions Ltd as the recipient of our Commitment to Excellence Award.

Service Sealing Solutions Ltd provide a number of different sealing solutions across the UK to both the public and private sectors. As the sole UK distributor for the sealing industry's top manufacturers; DOYMA and HKD, Service Sealing Solutions Ltd specialises in high-quality service duct sealing systems for utility services and watertight seals.

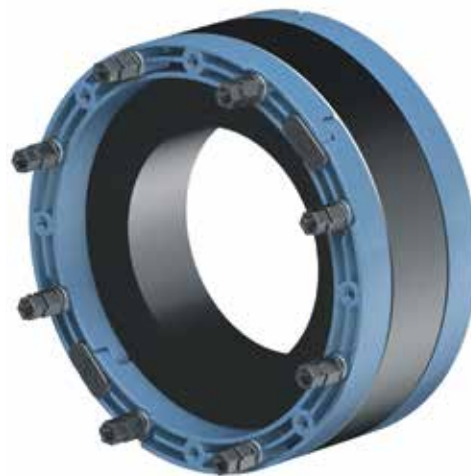
Service Sealing Solutions Ltd has the exclusive rights to distribute DOYMA products in the UK. DOYMA stands on the front line when it comes to the development of innovative, practical solutions for sealing and fire systems. Providing the very best in German engineering, DOYMA is used to seal penetration points in walls and floors to permanently prevent any infiltration of gases and water into the building. All DOYMA



Husband and wife team, Jim & Tina have recently visited DOYMA in Germany to find out about the innovative products that DOYMA have been developing

products are designed to solve all watertight duct sealing requirements, prevent against structural damage and incorporate rubber mouldings that ensure all gas and watertight features.

Demanding building types, such as power plants, large industrial plants, reservoirs or airports, often require highly specialised custom-



made constructions. They place high demands on the fact that building penetrations such as cables and pipe work need to be permanently sealed. In the case of extraordinary pipe dimensions or special thermal, chemical or physical requirements, sealing systems in the form of a special construction are the required solution.

Service Sealing Solutions Ltd has a large range of DOYMA products that come with a 25-year warranty. DOYMA product brochures are available on the website and include products that have been supplied to some of the UK's largest projects such as HS2 and Kings Cross in London. DOYMA has recently released its new generation Curaflex Nova® gaskets, which are the perfect solution for any professional tradesman instantly looking to solve sealing



problems and can be adapted to multiple applications.

Service Sealing Solutions also supplies HKD products, which are now owned by DOYMA. HKD manufacture a large range of pipe sealing systems and service conduits that are guaranteed to withstand up to four bars pressure. HKD systems have a sealing solution for service conduits cast into concrete without the sleeves. They are supplied and ready to use, requiring no site preparation work prior to installation. With options such as KE Socketless service conduits, KG Wall Ducts and Floor Ducts, together with KG Twin Sockets for installation in pump sumps, HKD products are ideal for situations where suitability for thin-walled concrete structures is vital.

**For more information, please see below:**  
**T 01952 510050**  
**[www.service sealingsolutions.co.uk](http://www.service sealingsolutions.co.uk)**

## Industrial Technology

# The new alternatives in power conversion

Power conversion is familiar in most consumer and industrial technologies, which typically use AC adapters to convert to DC and supply the required voltage. However, while the method of conversion allows a heater to operate at a given set temperature, it receives the full voltage when turned on, which can cause damage over time in some cases. Other solutions, such as phase-angle controllers and DC power supplies also have their own setbacks, making power conversion a tough task. In this article, Stan Breitlow, chief system designer at industrial temperature controller manufacturer Watlow, discusses the new alternative in power conversion.

### The necessity of power conversion

The goal with a heater is not to attain a given DC current, but to maintain a given temperature, which is done using a switching device that turns the power on and off rapidly. Usually, this kind of switching or cycling is not an issue. But in some cases when heaters are small, have ceramic components, or where control of multiple heaters is needed, it is not ideal to have the device on with full voltage, let alone have it switching between states. For example, this can happen when precise heating is needed in medical devices, or rapid heating is needed to test microchips in the semiconductor industry.

The issue becomes worse when constructing devices for an international market. Heaters often have very specific voltage requirements, but the power sources can vary from country to country. In today's global economy, there is a great need to normalise this power for use with heaters built for the voltage requirements of any country. In short, power conversion is an old idea, but current technologies in the market are not well suited for some applications.

### The problem with power conversion

Power conversion is essential for any heater, whether in an in-home medical device or a large-scale industrial process. But as heaters become smaller and more intricate, more attention must be paid to their power supply. It's important to be mindful that there are four types of cases where inadequate power conversion can lead to problems.

Firstly, fragile heaters become easily damaged. Switching a higher-voltage power source on and off creates wear and tear on devices. As this happens, smaller, more fragile heaters are more likely to fail over time.


### New power conversion technology

Power conversion is commonly achieved through phase-angle controllers, transformers and power supplies. But as we have seen, these solutions can either damage

heaters, or take up large amounts of space or make it incredibly hard to measure and control the power flow. Watlow's power conversion technology solves these issues by providing the ability to bring voltage up or down smoothly without having to introduce a bulky power supply. Watlow temperature controllers, such as POWERGLIDE®, are capable of modulating the amplitude of the output voltage, allowing the voltage to step down from 208 volts to as low as 20 volts.



Lowering the voltage in this way is a great way to drive low-impedance heaters. It can reduce the power distribution rating with smaller fuses and wires, which saves money and space.

**For further information, please contact Johann Lainer,**  
**T +43 6244 201290**  
**[jlainer@watlow.com](mailto:jlainer@watlow.com)**  
**[www.watlow.com](http://www.watlow.com)**



## Intuitive Temperature Controller Enhances the User Experience

- Intuitive menu flow
- Bluetooth® connectivity with EZ-LINK™ mobile app for remote access capability
- Load exactly the right heating settings every time
- Supply updated settings to customers quickly and accurately
- Access settings in hard to reach controllers



Powered by Possibility

Contact your local Watlow representative or visit [www.watlow.com](http://www.watlow.com) to find out more



# Service Sealing Solutions Ltd – suppliers of DOYMA products



Service Sealing Solutions Ltd are the sole UK distributor of DOYMA products. Wherever services are installed through walls, ceilings or floors, penetrating water may cause damage to buildings. Lack of attention to the points of entry of pipes and cables into the building can have serious results: damp cellars, equipment damaged by water ingress and high repair costs. Service sealing systems ensure professional and perfect pipe sealing, thus presenting excellent preventative measures against structural damage. The very best in German engineering is used to seal penetration points to the wall to permanently prevent any infiltration of gases and water into the building, and the duct sealing systems are guaranteed for 25 years. Service Sealing Solutions supply the full range of products to suit all situations for power cables, communication cables, pipes and ducts, and specialising in sealing district heating pipes.



Service Sealing Solutions Ltd



**01952 510050 | [www.servicesealingsolutions.co.uk](http://www.servicesealingsolutions.co.uk)  
[sales@servicesealingsolutions.co.uk](mailto:sales@servicesealingsolutions.co.uk)**



# Taking you up in the world

**D**irect Hoist has scaled new heights with the addition of a bespoke training centre at its Lincolnshire site offering both familiarisation and NVQ Level 2 courses in hoist installation.

The company offers training on hoists & mast climbers manufactured by both GEDA and Electroelsa with lifting capacities available of between 200kg and 5,000kg depending on the manufacturers used. The new classroom and training tower facility is used to teach candidates both the theory and practical elements of assembly and disassembly of these manufacturers mast climbers & hoists.

The training courses cover up-to-date industry working practices, legal requirements and working equipment knowledge. The on-site



facility includes a 10m high training tower, with capacity for transporting a two-tonne platform hoist, with full load to full height, with expert tutors offering hands-on optimal safety training.

The more experienced industry students are offered a two-day specialist familiarisation course in theory and practical assembly and disassembly of various lifts, with a further week-long course available for deeper understanding of erecting and dismantling hoists. Students are examined by an external assessor at the end of the course and will receive an industrially-recognised certificate, if successful.

Direct Hoist's recent expansion into training is testament to its industrious, hardworking team, who always go the extra mile. As a committed living wage employer, Direct Hoist sees its

workers as the backbone of the company. But it's not only salaries that are supported, Direct Hoist recently trained some of its staff as Mental Health First Aiders, further signalling its commitment to the Workplace Mental Health Charter, through staff wellbeing.

All new trainees are placed on NVQ courses, rigorous health & safety training, and further manufacturer courses. More senior staff hold the NVQ level 3 qualifications, which is viewed similarly to the CSCS gold card on construction sites, and as Rob explains, there are many things to learn, "It's surprising how much there is to learn for hoist installation, even for experienced construction workers and managers. We need to know load calculations, equipment specifications, whether there are any voids below grounds or obstructions (such as telephone lines) above."

"Right from the start, new trainees will learn about the specialised nature of construction hoists – including product types, electrical systems, fault-finding, assembly, disassembly and reconfiguration into alternative layouts."

There are more training programmes planned for the future such as: electrical safety and working at heights. Direct Hoist can help companies scale the heights and take you up in the world.

In May 2022, Direct Hoist became the UK distributor of Electroelsa, an Italian manufacturer of mast-climbing work platforms (MCWPs), transport platforms, material hoists and construction hoists. Rob Wilson commented, "Electroelsa are a top class manufacturer who are leading the way forward, especially with their hoist & mast climbers having data logging technology so if there is an operational problem on-site, a diagnosis can be carried out remotely



from anywhere in the world (if need be) on a PC or app on our engineers phone as it's vital to minimise downtime on-site, while maintaining efficiency, cost and ease of use."

At Direct Hoist's recent open days, the Electroelsa PM46 (MCWP) took centre stage on the 10m training tower and received glowing feedback. Elsewhere the expansion of the Electroelsa hire fleet can now be seen on a city skyline near you, its signature vivid yellow is hard to miss. Direct Hoists' future is looking bright.

**For more information, contact the team today:**  
**T 01724 781647**  
**info@directhoist.co.uk**  
**www.directhoist.co.uk**

**SUPPLIER OF CONSTRUCTION HOISTS AND MAST CLIMBERS**

**01724 781647** **0113 819 9997** **0191 260 0543** **0207 199 8278**

**UK DISTRIBUTOR**  
**Electroelsa**  
**GEDA**

**HIRE** **SALES**  
**SERVICING** **PARTS**  
**REPAIRS** **TRAINING**

**WE OFFER TRAINING COURSES TO NVQ LEVEL 2 IN HOIST INSTALLATION ON OUR 10 METER TRAINING TOWER**

**DIRECTHOIST.CO.UK**



## Oliver Valves chosen to supply world's single largest offshore wind farm

Oliver Valves are to supply a range of Modular and Monoflange double block and bleed valves to the Hornsea 3 Wind Farm project located in the UK sector of the North Sea. Hornsea 3 has

two platforms, link 1 and link 2. These are unmanned and operated from shore with access to carry out maintenance done by vessel or helicopter.



### World-leading

Valves for Hydrogen, Carbon Capture, Topside, Subsea, and Pipeline Applications.

### oliver valves

#### Instrument & DBB Valves

- Manifolds, Needle, Check and DBB Valves to 22.5K psi
- Cryogenic
- Severe Service 650°C, 10K psi
- Forged & Bolted Construction



### oliver twinsafe

#### Pipeline Valves

- 1" to 20" Bore Size
- High Temperature
- High Pressure
- Cryogenic
- API 10K Design



### oliver hydrovalves

#### Hydrogen & Carbon Capture Valves

- Instrumentation, Ball, Needle and DBB Valves for Hydrogen and Carbon Capture Applications
- Pipeline Ball Valves up to 18"
- 10K Ball Valves for Hydrogen Fuelling Stations



### oliver valvetek

#### Subsea Valves

- Diver & ROV Operated Needle Valves
- Ball Valves Up to 15K
- Manual & Hydraulic Parallel Slide Gate Valves 3/8", 1/2", 3/4" and 1"



We Manufacture Valves for Global Energy Projects.  
Find Your Local Supplier Call +44 (0)1565 632 636

### oliver valves



#### Reliability Under Pressure

+44 (0)1565 632 636 | sales@valves.co.uk  
www.valves.co.uk

Oliver Valves Ltd Parkgate Industrial Estate,  
Knutsford, Cheshire, WA16 8DX, United Kingdom

These High Voltage Direct Current (HVDC) offshore converter platforms have a combined capacity to produce 2.852GW, enough to power the average daily needs of over 3 million UK homes. This makes it the single largest offshore wind project in the world.

Manufactured from 316 Stainless Steel, Super Duplex, and Titanium materials, valves are to be used in cooling systems and firewater applications. Regional Manager for Scotland and Scandinavia, Colin Wood says, "We're extremely proud as a business to supply valves for operation on large-scale green energy projects, and it's particularly exciting to be working with a UK-based green project, such as Hornsea 3."



We're committed to supporting a Net Zero Emission future, and have recently launched a range of zero seat leakage valves for hydrogen applications. Our investment in designing new and innovative valve technologies is having an enormous impact and is hugely significant – even a game changer!"

**For more information on how Oliver Valves can support your green energy project with the very best valve solutions, contact us on: +44 (0)1565 632636, email: sales@valves.co.uk or visit: www.valves.co.uk**

## Water Transfer Systems

## LeeSan provide the perfect Sanitation Systems for 28 new floating homes at Upton Lake

Upton Marina, Upton Upon Severn, (now called the Upton Lake Project) is the location for this exciting new development. Ten floating homes are currently planned. This will be expanded to feature twenty-eight in total in three further segments. The project has been underway since the start of 2022.

Obviously, floating homes come with some technical challenges. In this case, one of these was working out how to allow them all to discharge black and grey waste to the main foul sewer located some distance away on the far side of the marina.

However, for Warwickshire based Marine Sanitation specialists LeeSan, this sort of project is all in a day's work. Working closely with the developers, the LeeSan team have designed and specified a custom built, integral, HDPE (High Density Polyethylene),

transfer tank with single submersible pump (supplied by LeeSan's parent company Pump Technology Ltd.) for each home. All pipework from the home's grey and black waste discharges directly into this. A safety operating panel and high-level alarm to warn of any challenges in good time to take appropriate action is also included in every system.

These individual tanks then automatically pump out to a master transfer tank comprising of another larger HDPE tank with, for belt and braces security, twin 3 phase pumps (again from Pump Technology Ltd.), on a duty/standby/assist arrangement. This can easily cope with multiple homes discharging at once. From here, the system then discharges via the ramp and across the bridge to the main foul sewer.

For the client, Tingdene Group an important part of the brief was that each system should operate just like a normal home, and this has been successfully achieved.

LeeSan has currently completed and commissioned the installations for the first five homes.

Tingdene Group have a show home in the marina, which they let out to potential clients interested in buying a home. This is proving to be a great idea as there is nothing like trying before you buy!

It certainly seems that LeeSan are expanding the concept of 'Marine' Sanitation into ever more interesting and exciting areas!

T 01295 770000  
www.leesan.com



Exterior and interior of the first five floating homes



The individual tank installation designed for each home

## WASTE TRANSFER SYSTEMS.

### SANITATION SOLUTIONS FOR FLOATING HOMES & MARINA DEVELOPMENTS.

- Supply / Installation
- Testing and Inspection
- Consultancy Service
- Maintenance Contracts
- Servicing

Marine • Welfare • Leisure

0044 (0)1295 770000 - sales@leesan.com - www.leesan.com



# Award-winning resin flooring from 100% recycled waste plastic



In this issue of Industrial Solutions, we have selected Abacus Flooring Solutions Ltd as our Company of Choice.

Our fragile planet is at catastrophic risk from waste plastic, with numerous quantities ruining our bountiful oceans, endangering marine life, human health and ecosystems. Harmful chemicals such as bisphenol A (BPA) and phthalates in plastic can cause havoc in soil chemistry and landfill groundwater.

Abacus Flooring Solutions is a multi-award-winning specialist flooring contractor from Coalville, Leicestershire that has come up with a landmark innovation. By using waste plastic (that would otherwise go to landfill) in industrial resin flooring, the East Midlands based company has revolutionised the flooring industry.

The groundbreaking patented innovation is named 'Abaplas' and is the brainchild of Managing Director, Nick Megson. It is the first exclusive design in the world of its kind, providing a wholly sustainable, eco-friendly flooring method.

Established in 2020, the company designs, manufactures and installs resin flooring for a wide range of industries



from industrial, commercial to healthcare. With a dedicated aftercare service, customers benefit from an annual follow-up site visit for cleaning advice and slip testing. Furthermore, the sister company: Abaplas Recycling Limited treats all the plastic recycling for Abacus resin flooring products and initiates the sales of treated plastic for use by other product manufacturers.

We caught up with Nick Megson, Managing Director to find out more about this award-winning company, "Our products are intrinsically more environmentally friendly than any other flooring product on the market: there is currently no competitor offering a resin flooring that entirely replaces harmful silica sand with 100% recycled waste plastic."



"Resin flooring, along with many other industrial products, has traditionally been manufactured using silica sand, which is a dangerous and potentially carcinogenic substance when inhaled."

"Abaplas instead contains non-harmful recycled waste plastic, which is ground down to a white powder. The process will vastly reduce the volume of waste plastic ending up in landfill or the world's oceans."

"The world's first resin flooring using 100% recycled plastic was installed by Abacus in the enormous VIP Visitor Centre auditorium at JCB's global headquarters in Staffordshire, UK."



The future looks bright for this flagship company as it sets a new benchmark for sustainable usage of plastic waste in flooring for years to come, "It is expected that Abaplas Recycling Limited will grow exponentially over the next few years as more clients specify Abacus's 100% recycled waste plastic flooring. Rapid growth is also expected as Nick's unique process becomes adapted for use in a much broader range of flooring, construction and industrial products," concludes Nick.

**For more information on Abaplas, please see the website below:**  
**T 01530 432790**  
**nick@abacusflooringsolutions.co.uk**  
**www.abacusflooringsolutions.co.uk**



**Tel: 01530 432790**  
**nick@abacusflooringsolutions.co.uk**  
**abacusflooringsolutions.co.uk**

## RESIN FLOORING SPECIALIST FOR YOUR BUSINESS

Offering bespoke flooring solutions  
for your business

We offer a full range of flooring solutions, including Epoxy, Polyurethane, MMA and Polyaspartic. Each of these flooring solutions come in all types, thicknesses, colours and properties, and we work closely alongside innovative designers in order to tailor our services to suit your exact requirements and budget. Your needs are kept at the forefront throughout, in order to ensure your project is delivered to your full satisfaction. Being approved by most resin flooring manufacturers ensure you receive a whole of market choice.





# BUILDING UPDATE

ISSUE: 667 August | [www.solutionspublishing.co.uk](http://www.solutionspublishing.co.uk)

## Protecting your investment, with award-winning, sustainable products

In this issue of Building Update, we are delighted to feature SWIFIX as our External Wall Insulation Company of the Month.

External wall insulation (EWI) is one of the fastest growing areas within the UK construction industry. For time immemorial, timber pattresses have been used to secure the fixing of satellite dishes through to utility boxes upon reinstatement. This was until SWIFIX: an Exeter-based company came up with a brilliant, innovative design range that bypassed traditional timber methods in 2016.

Paul Brown is the Director and brains behind the operations, with an extensive background in leadership in senior management, starting his career as a plasterer completing EWI.

SWIFIX is a multi-award-winning company that designs cutting-edge solutions for securing external furniture through External Wall Insulations (EWI). Since its inception in 2016, the range has been extensively extended, including a recent, exclusive design partnership with SKY telecommunications for a new product for securing cables and small pipework.

"We work with a broad range of customers from Architects, Local Authorities (LA's) to major contractors and system designers providing surefire solutions for securing external wall furniture, through insulation and cladding, across a range of properties, including retrofit, new build, and the off-site modular sectors.



"Our unique design approach has brought robust solutions to market, for securing external furniture through EWI. These include: satellite dishes, rainwater goods, canopies, light alarms, signage, cables, pretty much any item that needs reinstatement," explained Paul.

The SWIFIX range are PAS2035-compliant for quality assurance and with easy installation and added cost-efficiency, it's easy to see why they are the leading choice for many customers.

The products are regarded as industry-leading, shortlisted for the National Energy Efficiency Awards (2016):

with many other accolades recognising innovation and Excellence in the Energy Efficiency Sector, and more recently, The INCA Innovation Award Winner in 2021. The Insulated Render and Cladding Association (INCA) is the recognised trade association for the EWI industry across the UK and awards are given for exceptional work in the industry. We asked Paul, in his own words what made SWIFIX products so special, "SWIFIX are recommended by many system designers as a product of choice, due to the fact that by using the solution and the way in which they are installed, they protect warranties and guarantees for the systems installed."

"The range provides a robust and watertight solution preventing ingress of water, which is damaging to systems. It truly offers a unique solution, unsurpassed by competitors, as it is suitable for many different formats and can hold greater weights. Overall, it is significantly cheaper than its competitors, offering considerable cost savings."

"I'm very proud of our green credentials: it is a very eco efficient-range, made from partially recycled plastics with all the parts are fully recyclable, along with the packaging, making our products very attractive in the age of sustainability."

**For more information on this award-winning range, please see below:**  
T 01884 560477  
info@SWIFIX.co.uk  
www.SWIFIX.co.uk



**CARLISLE**  
CM EUROPE

**Carlisle CM Europe**  
see them on.....II



**LS Products**  
see them on.....VI-VII



**Checkedsafe**  
see them on.....IX



**Bartels & Vedder**  
see them on.....XIII



**Tuff Waterproofing**  
see them on.....XIV



**Wallbed Systems**  
see them on.....XVI

SUPPLY AND SERVICE SPIDER PLATFORMS AND TRUCK MOUNTED PLATFORMS AND WILL HAVE THE PERFECT ACCESS SOLUTION FOR YOUR BUSINESS.

**FIND YOUR PERFECT PLATFORM**



**INDEPENDENT ACCESS SALES**

GET IN TOUCH TODAY OR VISIT OUR WEBSITE TO VIEW OUR RANGE.  
T. 07483 246878 | E. ENQUIRIES@IASALES.CO.UK | W. WWW.IASALES.CO.UK





## Sewage Treatment Systems

# H.D. Services Ltd: Sewage Treatment and Water Boreholes

Founded in 1984, H.D. Services Ltd. aim to provide the highest quality percussion drilled boreholes, sewage treatment systems and Open-Loop ground source heat pump installations in the Southeast. Feasibility of any project can generally be confirmed upon receipt of a site postcode.

We offer a one stop shop for self-builders, developers, contractors, consultants and architects, providing

waste and drainage solutions, independent water supplies and renewable heating options – all specifically tailored to meet individual needs and suited to the geology of the Southeast.

**Sewage Treatment, Boreholes and Soakaways**  
We have been involved in the design, supply and installation of sewage treatment systems for over 30 years.

We can either provide package solutions or we can design bespoke systems to meet individual client needs.

Projects undertaken throughout the southeast range from small solutions for single households to larger scale solutions for estates, business parks, farms, schools, caravan sites, hotels and public houses.

We offer a support service for consent

to discharge applications to the Environment Agency – a requirement when installing sewage treatment systems.

### Ground Source Heat Pumps

We are award winning installers of Open-Loop GSHP installations. These systems utilise ground water as a heat source. Groundwater is pumped from a water supply borehole directly to the heat pump where temperature is extracted.



For more information, please visit:  
[www.hdservicesltd.co.uk](http://www.hdservicesltd.co.uk)

## Roofing

# Waterproofing you can rely on

Carlisle Construction Materials Europe (CCM Europe) manufacture high quality waterproofing systems for new build and refurbishment flat roofing projects, along with the ARBO® range of sealants and EPDM tapes for façades, providing complete building envelope solutions for the construction industry.



CCM Europe is a dynamic company, driving innovation in speed and ease of installation, sustainability, and waterproofing performance across a variety of roofing technologies, including EPDM, bitumen and liquid Waterproofing. Offering expert technical advice to specifiers, CCM Europe supports optimised specifications, leveraging the variety across the company's waterproofing and sealants ranges.

CCM's RESITRIX® single ply waterproofing for flat roofs is the only roofing system that combines the properties of EPDM synthetic rubber and polymer-modified bitumen to create a durable hybrid membrane. An extremely flexible, single-layer waterproofing membrane, it can be applied on almost all substrates and provides fast and neat installation, with each section of membrane welded together quickly, easily and safely using a hot-air device without any need for naked flames.

Suitable for mechanical installation using induction technology, CCM's HERTALAN® EPDM system enables roofs to be made watertight quickly, with the company able to produce EPDM membranes up to 30m in length and in various widths up to 20m, thanks to its vulcanisation factory in Mansfield.

Another hero product within the CCM range is the ARBOFLEX® PU single component liquid waterproofing system. Made from pure polyurethane, which, once cured, forms a seamless elastic roof covering without any joints, ARBOFLEX® PU delivers air tightness and waterproofing on most substrates.

A high performance and wear-resistant membrane, ARBOFLEX® PU can adapt to any surface, including uneven, curved or irregular substrates. With its rapid-curing properties, it allows foot traffic within 24 hours. The single component liquid waterproofing can be applied straight from the tin, allowing fast and easy installation, and it is green roof compatible.

In addition to offering state of the art flat roofing and façade solutions, Carlisle supports expertise and knowledge sharing with the company's training courses at the CARLISLE® ACADEMY. Designed by professionals for professionals, CCM's training courses enable attendees to learn about the proven advantages of EPDM waterproofing solutions in an up-close, hands-on manner, ensuring construction industry professionals can maximise the products' performance benefits on site. For more information, visit: <https://www.ccm-europe.com/gb/academy>

Anticipating change creates opportunity for innovation and exceptional customer service. CCM has recently strengthened its sales and distribution network for the UK and the ROI market, welcoming new professionals to the company's sales team, with appointments including Charlie Patrick, who looks after the Eastern region, and Crawford McAllister who looks after the North and Scotland.

**Contact**  
T 01623 627285  
[info.uk@ccm-europe.com](mailto:info.uk@ccm-europe.com)  
[www.ccm-europe.com](http://www.ccm-europe.com)

You can watch installation videos for CCM Europe products here:



Natural Roofing Slate priced to help YOU win projects

**RoofingSlateDirect.com**  
**High Quality Slate at Low Prices!**

Quick & Easy Website Ordering

UK Wide Delivery & UK Technical Support

BS EN 12326-1:2014 to A1, S1, W1 & T1

Good match for Welsh Slate or Ballachulish Slate at a much lower price

Try us on your next slate roof project and find out what you've been missing!

[www.RoofingSlateDirect.com](http://www.RoofingSlateDirect.com)

T : 0333 323 1768

E : [contact@roofingslatedirect.com](mailto:contact@roofingslatedirect.com)

With over 30 years experience, we offer bespoke solutions for the domestic market across the South East. Feasibility of a project can usually be determined with a site postcode.

### AWARD WINNING RENEWABLE HEAT INSTALLATIONS

Open-Loop Ground Source Heat Pumps could meet all hot water and heating needs by utilising ground water as a heat source. Ideal for installation in new or self-builds.



**HD SERVICES LTD**

[enquiries@thehdgroup.co.uk](mailto:enquiries@thehdgroup.co.uk) | 01494 792000 | [www.hdservicesltd.co.uk](http://www.hdservicesltd.co.uk)

### SEWAGE TREATMENT SYSTEMS

We can provide package plant or bespoke systems. All systems are designed to meet the needs of individual clients and comply with strict discharge legislation. Servicing contracts are offered on all installations.



### WATER SUPPLY & SOAKAWAY BOREHOLES & DRAINAGE SOLUTIONS

Independent water supply for irrigation or consumption\*  
Soakaway drainage fields and other drainage solutions

\*subject to analysis and suitable filtration



**ARBOFLEX®**

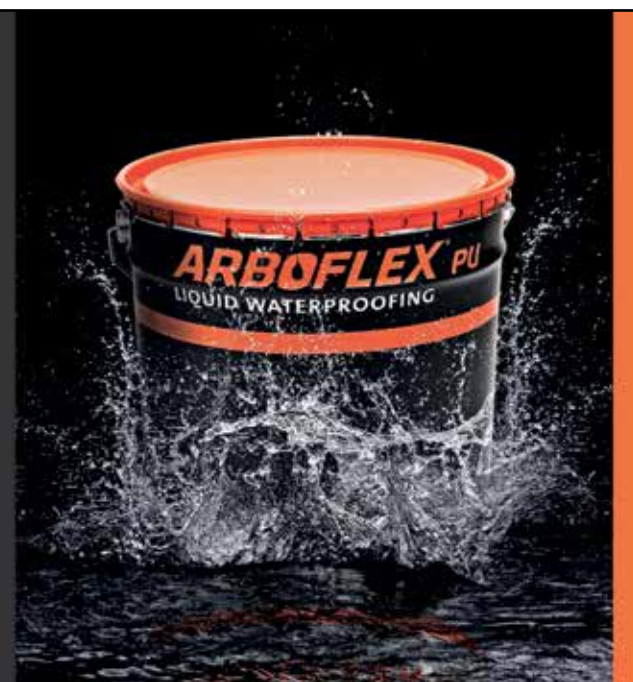
**Liquid Waterproofing you can rely on**

One component PU liquid waterproofing

- ✓ Fast and easy installation
- ✓ Weather-resistant: can be used all year round
- ✓ Green roof compatible
- ✓ BBA Certified
- ✓ Seamless finish, adapts to uneven, curved or irregular surfaces



[www.ccm-europe.com](http://www.ccm-europe.com)



**CARLISLE**  
CM EUROPE



# ModCon Cabin Trader Ltd

**M**odCon Cabin Trader was formed in 2017 by Alan Willetts of whom has 25 years experience of working for some major manufacturers in the Modular & Portable Building Industry.



ModCon Cabins as it is also known manufactures and supplies Steel Anti Vandal Portable Cabins, Containers, Modular Buildings and all site ancillary items associated with the Portable Building Industry. Please

visit: [www.modconcabins.co.uk](http://www.modconcabins.co.uk)

Items such as Portable Offices, Canteens, Toilet units, Drying units, Storage Containers, Chemstores, Smoking Shelters, Effluent Tanks, Staircases are regular and repeat produced items that we manufacture for our clients.



Based in Gloucestershire in the South West we are logistically nicely placed around all the major motorway networks for ease of transportation.

Our workforce are all very skilled and experienced fabricators of whom have many years experience working within our industry and so know the expectancy of our customers requirements so you can be sure that if you approach ModCon Cabins to undertake your work you are in very good hands!

Being that all items produced are mostly built on a jig and to customers own specification we are open to undertaking



bespoke enquiries too so please feel free to engage with us here at ModCon Cabins even if you have a rather random enquiry for certain products.

Why not also take a look at ModCon Cabin Traders other side of the business which is an Auction/Resale website that allows all and sundry to utilise the site to sell new & used Portable Building products which operates very similar to a well-known auction/resale site we are all familiar with, however only for products relating to our industry.

**Contact**  
**T 0333 404 8822**  
**info@modconcabins.co.uk**  
**www.modconcabins.co.uk**





**ModConCabins**  
Manufacturer of Modular, Containers & Cabins

Steel AV Cabins • Smoking Shelters • Chemical Stores & Storage Units  
Staircases & Steps • Effluent Tanks • Water Bowsers • Turnstiles

















INTRODUCING



**MODCONCABINTRADER**  
**www.modconcabins.co.uk**

info@modconcabins.co.uk

**ModCon Cabin Trader, the Modular, Portable Building & Plant Industry related, Resale/Auction website!**

+44(0)333 404 8822 07842 318869

# Lighting & Electrical

## Belisha & Refuge Beacons

**AmberGL08**  
8W LED Beacon, reflective white banding



**OlympiadIPB**  
30W LED Beacon with illuminated and reflective white banding



**Lodestar**  
LED Refuge Beacon 12W with Pearl Globe and Traffic Grey Gallery



**Sentinel26**  
Refuge upgrade total 26W High Visibility LED Beacon with 2NA Illuminated reflective white bands



Full range of accessories – Courtesy Shields, LED Crossing Spotlights, Bracket Arms and retrofit spare such as Reflective White Bands etc.

## Feeder Pillars

We manufacture and supply a huge range of Feeder Pillars to suit every purpose in galvanised or stainless steel and GRP, shellonly or pre-wire





For every type of power distribution, EV Charging, MRI for Hospitals, Sports & Leisure, Parks & Gardens, Events & Markets, Multi-Service & Multi-User






Quality Feeder Pillars from stock or made to order, fast turnarounds with unrivalled service



EST 1982

Contact our Sales Team now on **0333 666 2122**  
or email **info@fisherandcompany.co.uk**  
Visit **www.fisherandcompany.co.uk** to view our range of products  
1-4 Cary Court, Somerton Business Park, Somerton, Somerset TA11 6SB





# The Environmental Assessment Specialists

Founded in 2007 by Graham Parry and ACCON GmbH, ACCON UK is one of the UK's leading niche environmental consultancies, specialising in air quality, noise, vibration, lighting, flood risk environmental assessment, odour, contaminated land, and Environmental Impact Assessment (EIA).

"We are an Environmental Consultancy committed to serving our clients with the highest standards of consultancy advice with our services variously provided for new development proposals and also as part of nuisance investigations. We provide specialist environmental technical studies which assist developers in obtaining planning permission and we also provide specialist review services to local authorities," stated Graham.

Located in Reading and Brighton, ACCON UK offers focussed solutions for its clients supported by its team of specialist technical assessment consultants who are trained to provide the most up to date service that includes knowledge of the most relevant and latest revisions to the planning system.

ACCON UK prides itself on producing the highest level of service to a range of sectors including housing, commercial, retail, leisure, industrial, mining and quarrying, petro-chemical, energy and wind farm developments. And within these sectors, ACCON has the capabilities and specialist expertise



to serve clients who work in major infrastructure projects, transportation – road and rail, residential and commercial development, sports stadiums and recreational facilities.

At ACCON UK, a commitment to excellence means much more than just ticking the right boxes. ACCON UK is accredited and registered with ISO9001, RISQS, ANC, SMAS as recognised by AAIP, and is a member of Constructionline. ACCON's entire approach combines the unity of the expertise and experience from each member of staff to ensure the delivery of its service to its clients is exceeded above expectations and remains within the guidelines of its accreditations.

"Our services are fully integrated across each team and the main offices, ensuring that a holistic approach to environmental assessment is provided. From developers and architects to town planners and local authorities, we work with many industry professionals. Our services aim to provide clients with exceptional value for money, bringing to bear 50 years' experience across all environmental topics and a very good understanding of EIA," mentioned Graham.

ACCON UK is able to complete every aspect of EIA including screening requests, scoping and methodology and the preparation of the EIA and Non-Technical Summary (NTS). Keeping the client as its number one



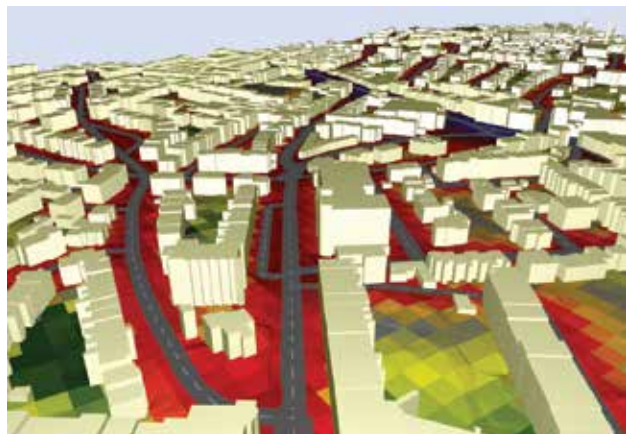
priority, the EIA can be completed by either ACCON UK's in-house team of technical experts, or by using the client's external technical specialists.

The company's dedicated EIA manager has a wide range of experience that is vital given the level of

scrutiny that EIAs face during the planning process. Clients can rest assured the process will be as smooth as possible, and that ACCON UK will work hard to avoid the need for EIA altogether if at all possible throughout the planning process.

In closing we asked Graham what the company's plans were for the future, he answered, "Since COVID-19, measures for home working were put in place, and those measures have continued alongside our normal office working. We have an ambitious expansion plan programmed to cement our position as a small but niche environment consultancy. We are excited for the future!"

**For more information, see below.**  
**T 0118 971 0000 (Reading Office)**  
**T 01273 573814 (Brighton Office)**  
**enquiry@accon-uk.com**  
**www.accon-uk.com**



## ACCON UK

ENVIRONMENTAL CONSULTANTS



We are one of the UK's leading niche environmental consultancies, specialising in air quality, noise, vibration, lighting, flood risk assessment, contaminated land, daylight & sunlight assessment and Environmental Impact Assessment (EIA). Our standards of EIAs, technical reports and planning proposals ensure you get the most robust and reliable results. ACCON UK's wealth of experience and efficiency enables us to produce cost-effective air quality, noise and EIA reports for our clients. We maintain a wide range of noise, vibration and air pollutant measurement equipment to ensure the very best outcomes for our clients.

We offer focussed solutions for all our clients provided by our team of experts, all of whom are specialist environmental assessment consultants and are up-to-date with the most relevant and latest revisions to the planning system.

Contact ACCON UK today to discuss your individual requirements with one of our consultants.

### Our range of sector expertise includes:

- Major Infrastructure Projects
- Transportation – Road, Air and Rail
- Residential and Commercial Development
- Sports Stadia and Recreational Facilities
- Industrial
- Energy and Wind Farm Developments
- Mining and Quarrying
- Petro-Chemical



## Please visit our website [www.accon-uk.com](http://www.accon-uk.com)

Telephone: +44 (0)118 971 0000 | Email: [enquiry@accon-uk.com](mailto:enquiry@accon-uk.com)



# Make your project possible

**D**CON Safety Consultants Limited offers leading health and safety consultancy and construction statute advice services. The company prioritises and specialises in the highest levels of informed and intelligent advice, senior project resource allocation and compliance assurance. Informed by industry expertise, DCON Safety Consultants Limited knows that every project has potential risks, no matter what its potential benefits, so its team of highly experienced construction professionals helps to ensure clients' statutory conformity.

Upon gaining understanding of the specific needs, goals and desires of each client and their project, DCON Safety Consultants Limited is dedicated to implementing a design and construction management plan that will meet or exceed these requirements. And, DCON Safety Consultants Limited ensures that there is honesty, integrity, trust and professionalism underpinning every project.

Moreover, the company's services are centred on three delivery principles:

- **Maximising Quality:** The company implements proven health, safety and wellbeing strategies to help clients achieve high quality and cost-effective work commensurate with the design of their projects.
- **Minimising Risk:** The company effectively manages design and delivery risk on projects to match each client's desired risk level profile.
- **Managing Compliance:** The company relies on its extensive background working on a wide variety of projects to assist clients in developing, monitoring and maintaining compliance performance.



This excellent service would not be possible without the leadership of Diarmuid Condon, a construction industry leader who brings unique perspectives to encourage, support and mentor the abilities of his colleagues. As a construction professional with a surveying background and experience spanning two decades, Diarmuid is emblematic of DCON Safety Consultants Limited's commitment to providing outstanding services to clients.

Diarmuid has contributed his invaluable expertise to over 400 projects over 20 years, with a client list including public sector departments, corporate owners, real estate developers, main contractors, design professionals and infrastructural bodies. With this incredible portfolio, Diarmuid is helping DCON Safety Consultants Limited to become a leader in health and safety consultancy across the construction industry.

Key to DCON Safety Consultants Limited's services is working as a Project Supervisor for the Design Process and

CDM Advisor in various sectors across the Irish construction market. No project is too simple or too complex for the company's construction safety consultants, all of whom are construction professionals with an average of 20 years' experience in the built environment. The ability to maximise this knowledge and skillset means DCON Safety Consultants Limited can generate distinctive and innovative ideas from traditional PSDP service inputs and outputs.

Additionally, DCON Safety Consultants Limited offers planning compliance assurance services. The ability to strategically support a positive planning decision is exclusive to the company. Its Draft Construction Management Plans (DCMP) inform the overall planning, coordination and control of a project from the beginning of construction to completion. The DCMP also safeguards the obligation placed upon a client to produce a safe, functional and financially viable project.

DCON Safety Consultants Limited also provides its



main contractor clients with intelligent, practical, and reasonable physical site safety advice to support compliance and good practice adherence. Behavioural safety outcomes inform how the company approaches each solution with the contractor and their supply chain, identifying opportunities for improvement.

To complement this, DCON Safety Consultants Limited can also help with clients' health and safety strategy. Its holistic and integrated approach can help unlock substantial benefits for clients by providing a structured, objective and SMART framework for full optimisation through the creation of an environment that embraces health, safety and wellbeing.

This means DCON Safety Consultants Limited helps clients to improve their health, safety and environmental performance; enhance staff satisfaction thanks to improved performance; improve risk management and corporate governance with a clear audit trail; gain confidence from long-term planning, better sustainability and performance; and improve overall corporate reputation, including greater staff satisfaction and a more efficient procurement and supply chain.

Finally, DCON Safety Consultants Limited can offer a safety expert witness service, which is headed by Diarmuid himself. He has extensively supported safety-related matters, and is a certified and competent safety professional who will work with clients to identify exactly what kind of safety expert is needed. Then, he will use an extensive network of contacts to recruit the right person to protect clients' interests.

DCON Safety Consultants Limited's fantastic service offering and proven track record of offering leading health and safety consultancy services makes the company a worthy winner of our Commitment to Excellence award. Such achievements are proof that DCON Safety Consultants Limited is well-placed to help ensure your safety, health and wellbeing and make your project possible.

If you are interested in finding out more information on DCON Safety Consultants Limited's full range of excellent services, head to the website or get in touch directly using the contact details below.

**T +353 (0)1 611 1556**  
**diarmuid.condon@dconsafety.com**  
**www.dconsafety.com**



## Leaders in Built Environmental Safety and Health and Wellbeing Consultancy

Consulting on various aspects of project design, constructability and operational lifecycle matters for local and global commercial clients.



### OUR SERVICES

- DESIGN SUPERVISOR
- PLANNING COMPLIANCE
- CONSTRUCTION HEALTH & SAFETY
- HEALTH & SAFETY STRATEGY
- EXPERT WITNESS

**Please visit: [www.dconsafety.com](http://www.dconsafety.com)**

Email [info@dconsafety.com](mailto:info@dconsafety.com) • Phone +353 (0)1 611 1556

DCON Safety Consultants, Suite 5, Fitzwilliam Square East, Dublin 2





***eco clipper***®



***'Dedicated to offer the best mowing system for maintaining large area turfgrass'***

Has clean cutting results in all weather conditions, improved efficiency (at least 20% more fuel efficient), easy maintenance and repairs and low cost of ownership.

**Please visit [www.ecoclipper.com](http://www.ecoclipper.com)**

**Call +31(0)646753560**

**Email [info@ecoclipper.com](mailto:info@ecoclipper.com)**



# High-capacity mowing systems

In this issue of Building Update, we are pleased to announce that we have selected LS Products BV as the recipient of our Product Innovation Award.

As a response to the increasing market demand for an upgrade to the 15-year-old electrically driven rotary mowers, the company started working on a newer, more improved version. Combining his years of experience and expertise, Syb Leijenaar – LS Products BV owner and Eco Clipper® inventor developed a new line of electric mowers that graced the market in 2018, and this was when the Eco Clipper® was born.

Built from experience, the Eco Clipper® Mowing System has evolved from the mowing system that was originally developed in the nineties on the turfgrass farm of the Leijenaar family in the Netherlands. Since the first electric mower product launch in 2002 to the latest Eco Clipper® range, LS Products BV has developed an extensive portfolio of machinery and equipment that has grown rapidly and been revolutionary to the turfgrass industry.

“Eco Clipper® is a range of large area mowers with a high productivity that help field managers to minimise their mowing costs, while producing a professional cut. Our mowers are electrically driven and use a special mowing deck design with small mowing blades. The mowing decks have good contour following capabilities and disperse clippings well, even in wet grass. This means we have a few important advantages over other mowers. These include delivering the highest mowing speed possible thus producing a higher productivity, they are quieter and more fuel efficient because of the small blades and electric drive, and they are more versatile to schedule because they can deal with wet grass and any other adverse weather conditions,” said Syb.



The Eco Clipper® Mowing System offers many advantages over traditional cylinder and rotary mowers. Because it consists of an independently suspended 106cm wide deck section, it is cleverly linked together in larger, flexible contour following mowing decks. The entire design and development of the Eco Clipper® Mowing System delivers a clean cut, even clippings dispersion and excellent following of the ground contours with minimal soil compaction.

The system also caters for bespoke requirements so customers can attach the decks to different frames, whether it be Carried or Towed. Offering three options, the Front Mower consists of a single deck with 2-6 sections, a Towed Mower consists of three separate decks of 10-14 sections wide, and a Carried Rear

Mower is combined with a Front Mower and consists of 10-14 sections wide.

“If you compare the Eco Clipper with other rotary mowers, you’ll see that the main difference is the greater clipping dispersion of the Eco Clipper. Furthermore the mowing speed of the Eco Clipper usually is a lot higher than the roller mowers and the Eco Clipper mowers are much easier to handle because of the lighter weight and the front mounting that provides a good view on the mower. Another development for mowing sports fields is the use of robots. The idea is to save on labour and costs. In practice the mowing costs with the small mowing robots only go up, because they require a lot of unplanned attention to keep them running. As an alternative,

customers should know that they can cut the costs in half by mowing with the Eco Clipper FM4 sport,” added Syb.

Municipalities, sports field and park managers have taken delight in the advantages that the Eco Clipper FM4 Sport brings. The EC-FM4 Sport is a 4.11m wide mower that has four independent cutting decks. The forward position provides excellent visibility and comfort for the tractor operator. Due to the electrically driven blades, the mower is very economical and quiet. The low noise is not only more comfortable for the operator, but also a delight for the neighbours. The large wheels and clever deck linking system ensure good contour following and enable high mowing speeds.

Launching next year, LS Products will be bringing out a new large autonomous mower based on the Eco Clipper. Syb explains further, “In 2024, we will launch a 3 and a 5m wide mowing robot based on the Eco Clipper mowing system. This autonomous mower is aimed for the turfgrass industry to further reduce the mowing costs. We found out that also robots need quite a high capacity to be able to beat the mowing costs of our larger Eco Clipper models. Therefore the new machines will give a mowing width of 513cm and mowing speed of close to 8 mph for the largest model.”

**For more information, please see below:**  
**T +31 6 46 75 35 60**  
**info@ecoclipper.com**  
**www.ecoclipper.com**





# Expert architectural metalwork for high-profile heritage buildings

Leander Architectural are expert design manufacturers of bespoke signage, bandstands, railway columns, gazebos, street furniture, wayfinding signs with a heritage restoration consultancy. The niche services offered are an eclectic mix of, blacksmithing, iron restoration, clay sculpting, decorative and structural iron, steel, and non-ferrous fabrication, metal casting for commercial trade, heritage and railways and private customers.

The Royal Label Factory was established during the reign of Queen Victoria in 1874 and even manufactured labels for the spectacular gardens of Queen Victoria herself. The prominent company progressively became a leading UK street signage manufacturer.

Leander Architectural was founded in 1986 and in 1998, the two businesses joined forces to become a phenomenal UK powerhouse in the world of architectural metalwork, manufacturing bespoke aluminium, steel, bronze and iron products.

Situated in the village of Dove Holes, near the Georgian spa town of Buxton in the High Peak District: Leander Architectural offers world-leading commissions from its on-site foundry and workshops.

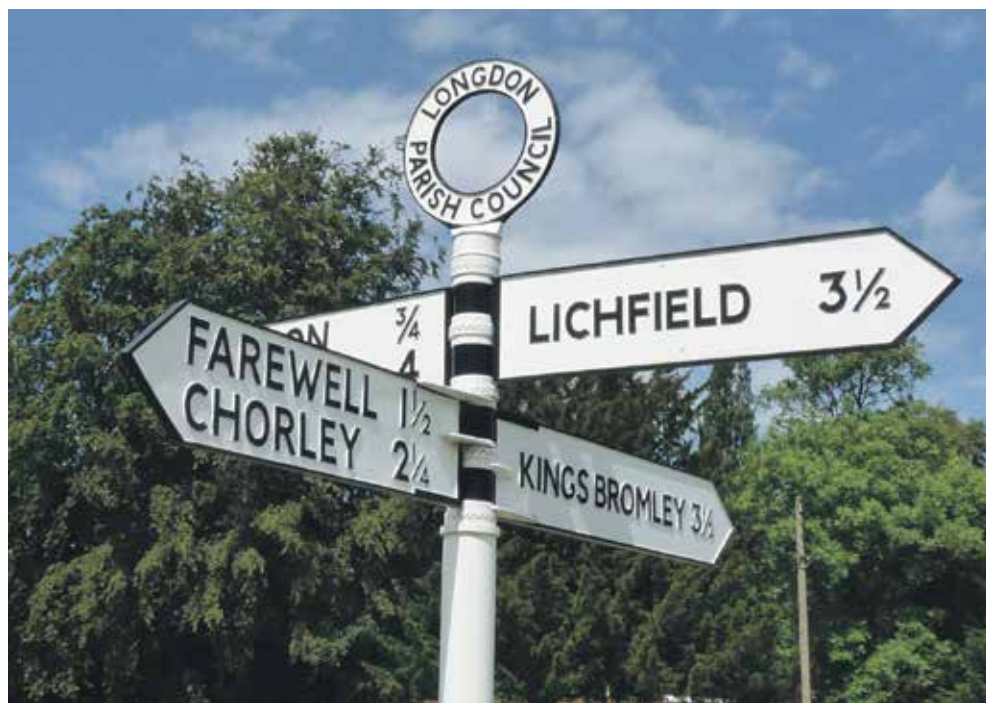
The team at Leander take such artistic pride in their work: utilising both modern techniques like waterjet cutting and computerised graphics, combined with more traditional skills such as clay hand-carving, resulting in a truly unique architectural metalwork portfolio. Many customers

are repeat customers, trusting the highly skilled professional approach and end results.

Recent prestigious projects included designing new cast iron



columns to repair a roof structure and replicate original features at an operational railway station: designed and built during the Victorian era as Managing Director, Gareth Roberts explains, "Several of the cast iron columns were cracked and needed replacement, due to ground subsidence. The damaged sections of cast iron columns were removed, then new ones installed, without removing the roof. Our skilled engineers worked with the prime contractor to carry out the design and manufacture, smoothly and efficiently, allowing the busy commuter station to carry on working without significant disruption."



Leander has an extensive back catalogue of casting patterns and designs for bandstands, structures, columns and many other products, but are always more than happy to offer bespoke services too.

Other high-profile projects include the installation of new canopies at the luxury Savill Court Hotel in Windsor, rebuilding the original staircase balustrading in eight stairwells, with modern adaption of the handrails at the Buxton Crescent Luxury Spa Hotel and installing new bespoke decorative metalwork within the new 'Sprague Terrace' between the Sondheim and Gielgud Theatres in London's West-End.

With a combined history dating back almost 150 years, this leading architectural metalwork company offers unrivalled expertise across a multitude of modern and heritage building designs.

The team use 100% British raw materials and recycled aluminium, supporting the local and national economy and trading with a reduced carbon footprint.

**To find out more, please see the details below:**  
**T 01298 814941**  
**sales@leanderuk.com**  
**www.leanderuk.com**

## BESPOKE STRUCTURES, COLUMNS & CASTINGS ARE A SPECIALITY!



### TOP QUALITY & EXCEPTIONAL SERVICE FOR OVER 140 YEARS...

Manufacturers and designers of high quality fingerpost signs, bandstands/gazebos (restoration & new), canopies, balconies, signage, plaques, street furniture and much more. Our restoration consultancy is regularly used by local authorities and other bodies looking for advice and assistance – particularly with bandstands, railings and park features.

- Bandstands, Balconies, Verandas, Canopies etc.
- Bronze & Aluminium Plaques
- Wayfinding Solutions
- Restoration Work
- Architectural Castings
- Custom Columns & Spandrels
- Blacksmithing & Fabrication Services

**01298 814941 • sales@leanderuk.com**

Please visit **www.leanderuk.com**



Manufacturers of  
Fine Structures and  
Signage Solutions





# Complete compliance solutions

Since 2014, CheckedSafe has provided simple and inexpensive tailored compliance solutions. Established by Gary Hawthorne and Darran Harris, CheckedSafe is a SaaS platform compliance provider providing several apps and a web-based reporting system that is multi-functional and secure.

The CheckedSafe system offers organisations a complete solution, enabling them to manage and protect their workforce and comply with legal compliance requirements whilst reducing cost and liability. "We can provide you with a fully integrated solution – you can be completely paperless – also by using our system properly you will have a legally defensible product. We bespoke templates on the app to suit individual requirements, our latest release now means that the client can also do this themselves," said Gary.

Located in Burnley, its system is global and can be accessed from anywhere as long as you have an internet connection for the management portal, the app itself works off line and on-line so there is no restriction on using the app.

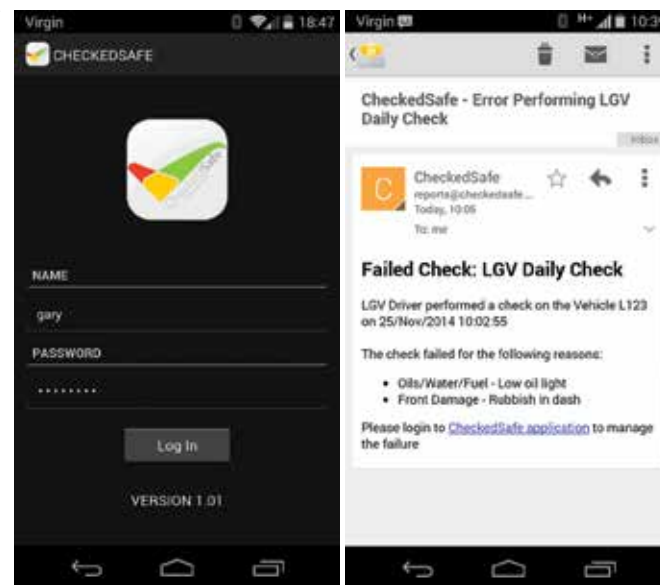
Both Darran and Gary's individual expertise has resulted in CheckedSafe being a nationally recognised company. "I am a transport professional with 30+ years in commercial transport, and Darran has 25+ years as a solicitor, so our individual skills set us apart from other 'IT' providers in the industry," said Gary.

CheckedSafe has a range of services from vehicle compliance solutions, compliance and regulations, risk assessment and incident reporting tools via the



App that enables them to offer the client a complete solution. Gary explained, "We constantly develop our product from user feedback. We release new features at least every quarter and a new app probably every four months depending on what features we have developed. Customer feedback is critical to us, we know a lot about transport, but the end users have great ideas that we take on board and use to develop free of charge and push out to the CheckedSafe community."

CheckedSafe's web-based reporting system is accredited by DVSA and the FLTA and utilised across all fleet types of HGV, PCV, VAN, plant or utilities. If



it needs a checklist, CheckedSafe can digitise and catalogue it, providing you with a cost-effective compliance solution.

With much of the industry yet to explore, over five million commercial vehicles in the UK and over 20 million pieces of plant, there is a huge market for CheckedSafe to expand into. "Our plan is to furrow into the fleet industry and develop new features, and if from this market we get new ideas then we will look to develop them further. We have recently developed our API to link with Dynamic 365 for a large crane operator which will come into development later this year/early 2022," stated Gary.

Despite COVID-19, CheckedSafe has managed to outsource all marketing resulting in an increase in in-bound enquiries. Utilising

platforms such as Zoom and Teams, less time has been spent travelling and more focus has been on growing the business from home.

Eight years ago, CheckedSafe was an idea, that today, has flourished into a fully successful business. Gary and Darran are passionate about what they do and provide a skill set that boasts professionalism and expertise. "We know our industry and our clients have an immediate infinity with us and put faith in us," said Gary.

**T 01282 908429**  
**info@checkedsafe.com**  
**www.checkedsafe.com**



## The vehicle compliance system for all fleets

Paperless defect reporting and fleet maintenance, all for **£1 per vehicle, per week**



Driver's app



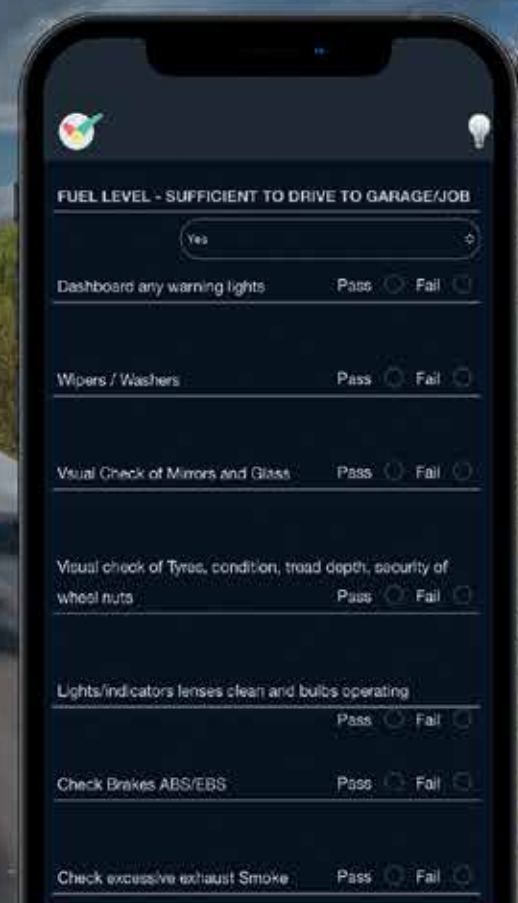
Fleet portal



GPS tags



DVSA compliant



Try free for 30 days at **checkedsafe.com**  
 or call us on **01282 908 429**



RE:  
THINK  
WOOD



Nature's  
first choice



My VDC  
View and  
order stock  
online



Prompt  
delivery



2025 – our aim is to  
trade in Certified  
timber only from  
2025 onwards



**VANDECASTEELE**  
HOUTIMPORT

[vandecasteele.be](http://vandecasteele.be)



# Vandecasteele Houtimport are one of the leading European timber importers and have ambitious aims to trade only in certified timber by 2025

The Belgian fifth-generation family company, founded in 1883, Vandecasteele Houtimport specialises in the import, trading and export of tropical hardwood from Africa, Southeast Asia and South America, Scandinavian and North-American softwood, North American and European hardwood.

Sustainability and reliability are an essential part of Vandecasteele Houtimport's DNA. With over 140 years of experience, the company is determined to achieve the goal of trading only certified timber by 2025. The challenge lies with the hardwood and especially the tropical hardwoods. Today they are at 80% certified and have a clear vision: only certified timber has a future.

A long-term goal that can only be achieved by including all partners. Substantial investments have been made over the years to be able to realise this future goal. You cannot achieve this goal overnight. This is a long-term job in which all partners must be included. If we want to assure our customers that we keep our promise to only trade timber that comes from well-managed, certified forests, we need to be sure that all our trading partners share the same strictest certification and sustainability processes as we do.

Vandecasteele Houtimport has a unique business model. Importing timber from all over the world, keeping in stock for several years, in some cases, even decades. Stock is our strength and our specialty. In times when supply is difficult or tight, we can count on our invested stocks to guarantee continued supply.

To achieve our goal, we have taken several actions within the company. First, we were assisted by external experts to get the procedures and protocols in place.



Secondly, the team at Vandecasteele was reinforced with two forest engineers in Brazil. That way we can keep a finger on the pulse of every shipment, and we are able to accurately apply the ever-changing legislation in Brazil with great precision. This sends an important signal to our suppliers. They know that doing business with Vandecasteele Houtimport means complying with a procedure that is continuously refined and adapted. All timber transport requires our approval. When in doubt the timber is not accepted.

## Masters in diversification

Vandecasteele has a long-term commitment to preserving the forests. The family business imports more than 130 different species of timber coming from 40 countries and has over 120,000 cubic meters in stock, mainly certified hard and softwoods. We support the LKTS program of FSC® Denmark with which we want to help promote the use of lesser known species. We keep these lesser-known species in stock and offer them as alternatives. Timber is too often prescribed from a specific well-known species. From the point of view of responsible forest management, we must dare to choose the right durability class for an application instead of a specific timber species.



## Rethink everything: A positive evolution in consumer purchasing behaviour

Customers are increasingly asking questions about certification and the



origin of the timber. Buyers are becoming more and more aware of the need to use certified timber. Importing tropical wood goes further than just asking for timber. There is a continuous evolution, because of new insights and new legislation.

We work together with external experts, we are broadening our internal knowledge and we continually make progress. Making progress is an ongoing process. Considerable steps have already been taken with the EU Timber Regulation but we can and should do better. We want to see and monitor a stronger application and support for certified timber. Vandecasteele communicates continuously with the users



via its website and campaigns in order to spread that message. This is necessary because the purchase of FSC® certified wood contributes to 14 of the 17 United Nations Sustainable Development Goals (SDGs). The purchase of FSC® certified timber contributes to biodiversity.

Since the year 2000, Vandecasteele Houtimport has committed itself through the Corporate Durability Charter by signing up to environmental objectives exceeding the applicable legislation. In 2018, the charter started a partnership with CIFAL Flanders, the local HUB of UNITAR, the Training and Education Centre of the UN. In 2020, Vandecasteele Houtimport was the first timber company in the world to obtain the international recognised 'SDG Pioneer certificate' from UNITAR CIFAL. In 2022, we were the first timber company in the world to have achieved the 'SDG Champion award.'

Our company continues to make efforts to embed sustainability into the business. We validate our organization's sustainability efforts with the Voka Charter for Sustainable Entrepreneurship (VCDO).

**T +32 56 43 33 00**  
**[www.vandecasteele.be](http://www.vandecasteele.be)**





# Environmentally friendly plastic lumber

**A**t Building Update, we are proud to announce that we have selected Kedel as the recipient of our Commitment to Excellence Award for its ongoing efforts in producing eco-friendly plastic products for a more sustainable future.

Kedel is a family business founded on ethical and ecologically sound principles. Dedicated to making sustainable living attractive, Kedel believe that by incorporating sustainable recycled plastic products into personal and working environments, it can create a happier, healthier and infinitely more sustainable future for generations to come.

Established by three brothers, Kieran, Dermot and Lewis Walch, Kedel is based in Burnley and supplies nationwide. We spoke to Dermot who explained what commitment to excellence means to them and how they feel they achieve it. "Commitment to excellence is an attitude towards work. You're only as good as your weakest link, so we try to give our staff an autonomous responsibility around servicing our customers and through this we are achieving service excellence."



Because of this, people can make quicker decisions and our customers end up 100% satisfied much quicker. Eco-Friendly Plastic is what we do. Not many people believe plastic can be green but it can. We manufacture plastic wood made from waste polystyrene, and are also suppliers of many other types of recycled plastic profiles from other manufacturers, which allows our customers to keep their carbon footprint down. We maintain excellence throughout our business through our sustainable products, sustainable supply chain and sustainable manufacturing policy."

Winners of the Feefo Trusted Service Award, Kedel's range of recycled plastic lumber reflects the future of the construction industry. From plastic fencing pales and edging board pegs to round posts, boards and



planks, tongue & groove planks, decking, and so much more, Kedel's extensive product range comes with a number of benefits. Of course, the largest advantage of plastic lumber in general is that it does not rot, absorb water and is highly resistant to damage. This much more versatile material means it has a life longevity to be placed in all weathers and climates making it a perfect material for use in construction, leisure, education, gardens and any water applications.

Some could claim that plastic wood is bad for the environment, however, Kedel would argue that yes, initially the cost of plastic wood may be higher but the outcome is that you have a product that will last a lifetime due to its extended longevity and zero maintenance properties. To add to this, Kedel only uses recycled plastic that would otherwise go to landfill, therefore, its contribution towards a circular economy is something to be highly commended.

Moving forward, Dermot explained what the future holds for the company. "We are about to increase the working hours of our extrusion plant to be operating 24 hours



a day 5 days a week which will double our production time, and to support this we are recruiting more extruder operators. In the future, we plan to build a

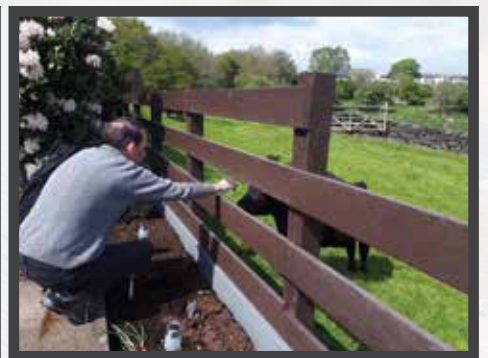
network of resellers around the UK, as the current cost of transport is at an all-time high so we are looking at ways around this for better business practice and to allow for an eco-friendlier way of working."

In closing, we asked Dermot how he felt receiving our award, he responded, "We are thrilled. It shows we are doing all the right things and going in the right direction and we will endeavour to live up to it."

**For more information, please see below:**  
**T 01282 861325**  
**www.kedel.co.uk**



## The Zero Maintenance Alternative to Wood



### Recycled Plastic

- 100% recycled and recyclable
- Impervious to fungi, algae, insects
- Never rots, splinters or cracks
- Graffiti resistant
- UV Protected
- Eco-friendly and low carbon
- 100% maintenance free
- Lasts a lifetime



**sales@kedel.co.uk | www.kedel.co.uk | 01282 861325**





# Innovative 'floating' solutions



**B**artels & Vedder BV is known as one of the best interdisciplinary engineering and consultancy agencies that specialise in innovative solutions for the construction, industry and offshore sectors. Bartels & Vedder BV is a collaboration that has led to a strong team of specialists who use integrated and interdisciplinary approaches to traditional construction, infrastructure, non-residential construction, and floating projects.

Over the years, Bartels & Vedder has created some innovative, ground-breaking infrastructures on both land and water. Using our expertise to

develop 'flood proof' buildings that float on water, here are just some of these referenced 'flood proof' projects:

- Floating houses and villa's
- Floating parks
- Floating offices
- Floating islands
- Floating neighbourhoods and cities
- Floating solar
- Floating jetties
- Mooring structures
- Fendering
- Bridges

Some practical examples of projects are the floating ferry terminal in Malaysia of 6,000m<sup>2</sup> and the largest floating

office in the world, The Floating Office Rotterdam (FOR), in which we engineered the floating foundations and superstructure and were the lead engineer of the project.

We also engineered the floating structures and buildings for Schoonschip in



Amsterdam. The brief was to create a large-scale floating residential area that existed of all floating villas arising in the Johan van Hasseltkanaal, a branch of the IJ-canal in Amsterdam. The floating 'district' called Schoonschip is now marked as one of the most sustainable floating housing projects in Europe and comprises of a total of 30 houses, 46 households and over 100 residents.

We are engineering and floating building/structure experts, and have been developing floating techniques since 2004. We have extensive experience with a diverse and competent team, handling the nautical aspects (stability of these structures, calculating drift forces from waves, current and wind, etc), engineering access bridges, mooring facilities, and the buildings itself. We do this all over the world and have engineered everything from floating parks to houses, hotels, ferry terminals, and much more.

Bartels & Vedder BV offer an extensive end-to-end service that comes completely unrivalled in the current market. Whether you're needing structural calculations, 3DBIM drawings, structural advice, monitoring and guidance, or just general structural advice, Bartels & Vedder BV can help.

**For more information, please visit:**  
**T +31 6 422 398 53**  
**info@bartelsvedder.nl**  
**www.bartelsvedder.nl**





# The seriously multi-purpose GRP Roofing System

Established in 2012, Tuff Waterproofing Ltd is the UK's premium designer, manufacturer and supplier of heavy-duty GRP waterproof flat roofing systems. TuffStuff® has a dedicated product development team that work closely with customers and its own UK based manufacturing facility to produce an evolving product range that is suitable for multiple flat roof applications.

From its base in Sherburn in Elmet, North Yorkshire, TuffStuff® is the UK's premier GRP flat roofing system and supplies its products through a dedicated stockist network throughout the country.

The advanced TuffStuff® formula uses the latest liquid polyester resins, glass fibre mat reinforcement and flexible trims, to create a fully integrated waterproof, seamless attractive finish with a 25-year guarantee on materials.

Tuff Waterproofing has further expanded its TuffStuff® product range and is now offering its latest GRP roofing innovation; TuffStuff® flexible GRP. This is a single resin solution that provides an exceptional combination of versatility and durability. It is extremely quick to lay and does not require stripping or re-decking of the roof, saving customers both



time and money. It can be applied to a variety of surface types and structures including vertical sections.

Managing Director, Greg Gimenez commented, "Standard GRP is rigid when it is cured, and it is specifically designed for flat roofs. However it can only be applied to OSB3 (Timber), and while this has been very successful, contractors have been looking for overlay systems which can go over other substrates." TuffStuff Flexible GRP can go onto many substrates including felt, asphalt, single-ply, GRP, concrete, timber and metal.

While other companies have standard GRP, TuffStuff® knows that this flexible GRP provides



an exceptional combination of versatility and durability. TuffStuff® flexible GRP has become a very important product already, for a number of reasons. It is a one-pot system, whereas standard GRP comes with a base coat as well as a top coat, and this saves a contractor plenty of time and, comes with a 20 year product guarantee on the full system.

However, the major advantage is that while it is curing, it is actually showerproof, and Greg commented, "If contractors experience a rogue shower while installing, they may have to go off-site, but upon returning they can carry on knowing that their work is not ruined (showerproof whilst curing), as it would be with standard GRP. This aspect of our product will really excite contractors that work with GRP regularly." This plus the fact that it is crack resistant, with no weak points has meant that facility



companies have also begun using the flexible GRP for patch repairs too.

TuffStuff® Flexible GRP will form a highly flexible, extra tough and seamless waterproof membrane – an ideal solution for areas of heavy-duty foot traffic.

Tuff Waterproofing Ltd will be exhibiting at the UK Construction Week in October in Birmingham, during which clients can find out more about this amazing new product.

**For more information,  
please see below:  
T 01977 680250  
info@tuffwaterproofing.co.uk  
www.tuffstuff.co.uk**



## FLEXIBLE GRP

Providing an exceptional combination of versatility and durability. Quick to lay, with no need to strip or re-deck a roof, this fast-curing system saves time and money.

It's a single-resin solution which can be applied to a multitude of surface types and structures including vertical sections.

With two coats applied within one hour, TuffStuff® Flexible GRP will form a highly flexible, extra tough and seamless waterproof membrane - can be a solution for areas of heavy duty foot traffic.

# TUFF STUFF FLEXIBLE GRP



[www.tuffstuff.co.uk](http://www.tuffstuff.co.uk)

T 01977 680250  
[orders@tuffwaterproofing.co.uk](mailto:orders@tuffwaterproofing.co.uk)



# Bespoke aluminium gates

In this issue of Building Update, we are pleased to announce Alugate UK as our Bespoke Aluminium Gates, Fencing and Doors Company of the Year.

Family run and based in Sheffield, Alugate is a leading supplier of welded aluminium gates, fencing, and doors working alongside with a network of installers throughout the UK.

Alugate is partnered with Spain's leading welded aluminium gates manufacturer; Grupo Marver, that has over 20 years of experience and the ability to manufacture and distribute over 300 gates a month throughout Europe.

In recent developments, we spoke to Stewart Phillips, Managing Director of Alugate who explained what the company has been up to.

"Over the past 12 months, we have been working with a number of suppliers to bring our customers some of the best gates in the UK market. We now source our gates from across Europe to provide a unique collection of styles, designs and price points to our customers. We realise that everyone's budgets and needs are different and we have adapted our portfolio over the past year



as a result. We've added a collection of bespoke screwed profile gates and fencing which are a more cost-effective option than our premium welded gate and fencing range. As we continue to adapt to the changing environment, we will be evolving our product range over the coming months and years – but our key aim will remain to deliver quality gates, fencing and doors to our customers."

As specialists in premium quality fully welded aluminium gates, Alugate offers something to the market that comes completely unrivalled. Alugates welded aluminium gates use 3mm aluminium profiles so they're extremely strong, meaning it can manufacture larger gates up to a 10m opening on swing gates and 8m on sliding gates.

"Our innovative manufacturing processes combine an internal weld so that water is not retained. We also use a 3-step sanding process that ensures a smooth surface; perfect for powder coating and super durable Qualicoat class 2 powder coating so they are fully resistant. We pride ourselves on being able to manufacture almost any style of gate or fencing bespoke to our customers' needs. Whether that is a flat top gate, an arch top gate, a steel style gate or a unique design created by a customer or architect or to match a design they might have seen – we can make almost any design

a reality and create the perfect gate," stated Stewart.

Alugate's bespoke design service is completely free and comes at no extra cost. Customers can rest assured that every welded aluminium product comes with a full 10-year warranty and will stand the test of time.

Sustainability is always at the forefront for Alugate, which is why aluminium is used for all products. Marked as the most eco-friendly metals available, it is infinitely recyclable and better for the planet. It also comes with many other benefits such as being the perfect material to use for gates as it is durable, reliable and strong but also deceptively lightweight compared to other gate materials. Alugate has a wide selection of designs to choose from in

its current collection, therefore if you require something more personalised to your needs its bespoke design service is the perfect option.

In closing, we asked Stewart how the company felt receiving our award.

"We are overjoyed to have been selected as bespoke aluminium gates, fencing and doors company of the year. After seven years in business this is a true accolade of our commitment to providing bespoke, quality aluminium gates and fencing to our customers across the UK."

**For more information, please see below:**  
**T 0114 3499599**  
**info@alu-gate.co.uk**  
**https://alu-gate.co.uk**



## ALUGATE<sup>®</sup>

### WELDED ALUMINIUM

The professionals choice for bespoke high quality aluminium gates, fencing and doors

- ▶ pedestrian, double or single swing, track or cantilever sliding, telescopic or bi-folding gates
- ▶ i-weld and Double ZERO system gives superior strength and no visible welds
- ▶ Qualicoat powder coating
- ▶ choose any RAL colour, micro-texture, gloss, matt, super matt, three-dimensional or wood grain finish

**alu-gate.co.uk**  
0114 3499599 | info@alu-gate.co.uk

**MARVERUK**



# Creating perfect sleep and storage solutions

## studio™ next bed™ beta bed™

**W**allbed Systems offer an exclusive range of beautiful wall bed hardware designs to furniture manufacturers and retailers, hardware distributors and retailers, hotel and hospitality contractors around the world. This sleeping solution works perfectly in hotel rooms, micro-apartments, small bedrooms, a home office and student accommodation, providing an excellent hybrid living, working, studying and sleeping area, fully maximising the space available.

Wallbed Systems Ltd. is a London-based global business established by Managing Director, Jeremy Waller, who has extensive experience selling mattresses and beds across Asia, who saw opportunities for sensible designs of reliable, safe and flexible wall beds, which could feature comfortable mattresses. With the latest designs and accessories (such as with the Alpha bed and Studio desk pairing) small or odd shapes rooms are transformed into multi-use spaces with cleverly concealed sleeping areas.

Taking inspiration from the original models, which originated in the USA in the early

20th century, the company has been manufacturing in-house spring balance systems over a 20-year period, allowing for precise tension adjustments and easy lifting, so there is no compromise on comfort or convenience.

All are easy to install and fit full height mattresses up to 300mm, meaning there is no compromise on an excellent night's sleep. The full wall bed design includes the bed counterbalance mechanism (SBLM), bed frame rails, mountings, pivot system, springs and fasteners. The powder-coated

parts are ergonomic and durable, offering assured longevity. Even more remarkable is the 'finger-tip' control mechanism with minimal effort to open and close each bed.

The Alpha bed system is the most popular product globally, available in standard and special sizes, vertical and horizontal mounting, with a choice of leg options and even a desk. The lightweight design comes with robust steel bed frames, with strengthened steel stiffeners for a strong platform. Alpha bed frames are available in single, double, queen or king sizes and

come with the adjustable SBLM, allowing perfect balance and easy, safe 'finger-tip' operation every time.

Latest designs include the NeXT bed which gives an immediate, ready to use solution with or without cabinet, and which still delivers comfort levels indistinguishable from a conventional bed. All products are stocked at multiple locations globally with advice provided around options and sizes.

**For more information on the full product range and cabinet designs:**  
**T +44 (0)208 704 5796**  
**T +44 (0)7780 661958**  
**jeremy.waller@wallbedsystems.co.uk**  
**www.wallbedsystems.co.uk**



**WBS** WALLBED SYSTEMS  
*Let's build a Wallbed together*

## LEADING FOLDAWAY BED SUPPLIERS



Wide Range



Highest Quality



Competitive Prices



Wallbed Systems designs, develops, manufactures, and distributes a wide range of wall bed systems to 27 countries around the world.

**Wallbed Systems Ltd.**

[www.wallbedsystems.co.uk](http://www.wallbedsystems.co.uk) | [Jeremy.Waller@wallbedsystems.co.uk](mailto:Jeremy.Waller@wallbedsystems.co.uk)  
+44 (0)208 704 5796 | +44 (0)7780 66 1958



# LE TONKINOIS VARNISH

LE TONKINOIS VARNISH IS A NATURAL OIL BASED YACHT VARNISH, USING A CHINESE FORMULA DATING BACK TWO OR THREE CENTURIES. AND WHAT A FORMULA!

IT REMOVES YOUR BRUSH-MARKS, BRINGS OUT THE NATURAL BEAUTY OF THE TIMBER, DOESN'T CRACK OR FLAKE OFF, AND IS PERMANENT, SIMPLY ADD A FURTHER COAT EVERY FEW YEARS.

LE TONKINOIS CLASSIC IS THE ORIGINAL CHINESE RECIPE, WHICH HAS PROVED TO BE A FIRST CLASS RESILIENT AND RELIABLE VARNISH FOR MORE THAN A CENTURY. TRADITIONALLY USED BY THE FRENCH NAVY FOR ALL THEIR SAILING VESSELS, AND WIDELY USED BY TRADITIONAL CRAFTSMEN FOR YEARS. IT TENDS TO GIVE A THICKER COAT THAN MARINE NO 1.



Please visit [www.letonkinoisvarnish.co.uk](http://www.letonkinoisvarnish.co.uk)

Telephone **01628 629892** or email [mail@letonkinoisvarnish.uk](mailto:mail@letonkinoisvarnish.uk)

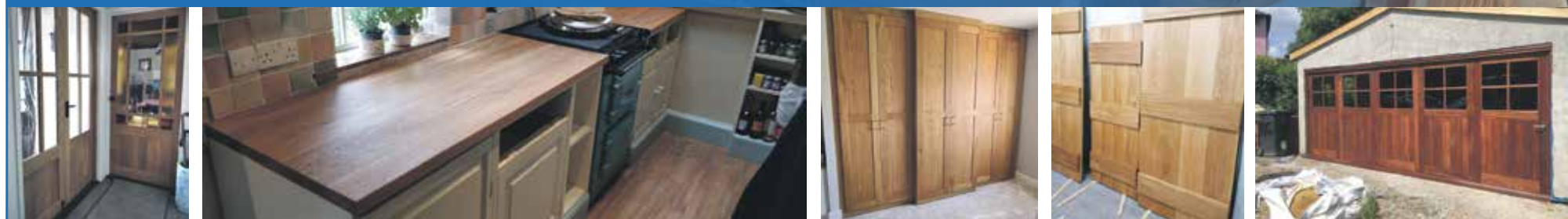
## Custom Made Joinery



## QUALITY, CUSTOM MADE JOINERY



Bluerun Ltd have been manufacturing top quality, purpose made joinery for the domestic and commercial markets for over 30 years.



Please visit our website: [www.bluerunltd.co.uk](http://www.bluerunltd.co.uk)

Tel: **01799 599995** | Email: [dee@bluerunltd.co.uk](mailto:dee@bluerunltd.co.uk) f [bluerunltd](#) @ [bluerun\\_joinery](#)



## Professional flooring for performing arts & dance education



Chris Stark



Dance

## The world performs on Harlequin floors

Harlequin is the global leader in the manufacture, supply and installation of sprung and vinyl floors for dance and the performing arts and dance studio equipment. Established as the industry choice for architects, building contractors and the world's most prestigious dance and performing arts companies and schools.

For information about specifying the correct floor for dance and performing arts download our RIBA approved CPD online at [www.harlequinfloors.com](http://www.harlequinfloors.com) or via the RIBA CPD page.

Contact our technical team for more information:

**+44 (0) 1892 514 888** [education@harlequinfloors.com](mailto:education@harlequinfloors.com)



**HARLEQUIN**

LONDON • LUXEMBOURG • BERLIN • FORT WORTH • MADRID • PARIS • PHILADELPHIA • SYDNEY • HONG KONG • TOKYO • BRNO • LOS ANGELES



# Over 25 years of engineering excellence

**G**LOW Engineering was first established in 1992 as Joe Bloggs Engineering by Geoff White and his business partner. After they parted ways, Geoff and his wife continued running the business, which became known as GLW Engineering in 1997. Previously based in Wisbech for 14 years, they are currently based in March, East Anglia, where they have now resided for six years. The company prides itself on being a construction industry specialist, celebrating over 25 years of business and extensive engineering experience and expertise.

Operating in an extensive range of areas, GLW Engineering can provide staircases, handrails, platform, structural steelwork, shot blasting, sand blasting, and soda blasting, with the recent addition of powder coating to their comprehensive array of services; they are now able to powder coat aluminium, mild steel, galvanised steel, and stainless steel. What's more, GLW Engineering



can consult with their clients regarding bespoke requirements, creating one off solutions which are tailored to a customer's needs.

"Our clients range from single self-builders, larger companies, and contractors," said Geoff White, Managing Director. "We are a well-established company, and I am delighted to say we offer flexibility, time efficiency and the ability to provide competitive prices that are suitable for all clients. We are also proud to say that we have completed many projects and have gained a trustworthy reputation with all of our previous clients and customers. Some of these previous projects include metal railings, canopies, steel staircases, a bicycle park, silos and bins, steel gates, grilles, trolleys, benches, steel building framework, handrails, and balustrades, all of which can be accessed on the portfolio section of our website. We offer custom build steel fabrications, and offer a fantastic design service working to clients' specifications.

"Customer service is at the heart of the company," said Geoff, "Which is why we offer many bespoke products and services. We are proud to say that we use 3D

CAD design facilities and have experts in all areas of our work. GLW Engineering specialises in custom build objects in mild steel, aluminium and stainless steel, which are built to an excellent and very high standard in our modernised workshop area. The company has many years of experience in the design, manufacture and installation of fabrications, and our staff are trained to the core in their specialised sectors, as well as giving friendly, efficient and professional services to all clients."

One of the company's most highly sought after services is shot blasting, which prepares steel work for a protective coating to be applied. "It is best described as preparing the surface of a part for coating by removing surface contaminants, which creates a surface profile for increased coating adhesion," explained Geoff.

Their soda blasting technology is suitable for cleaning timber, wood, oak beams, oak floors, doors, stairs and bannisters, cars, boat hulls, masonry, food processing equipment, and structural steel. It will efficiently remove and clean multi-layered surfaces right down to the base, eliminating the need for toxic chemicals, scraping, sanding, or abrasive blasting. Soda blasting is safe to use on metal, fibreglass, glass, chrome, rubber, and trim, and can degrease and remove paint without damaging or distorting metal.

We had the pleasure of speaking to Geoff about what makes GLW Engineering stand out from the competition. "We are a family-run business, offering quality as well as quantity. We are always proud of what we do and have a passion to continue doing it well into the future. Our main goal is to maintain our high quality services and to strive for longevity.

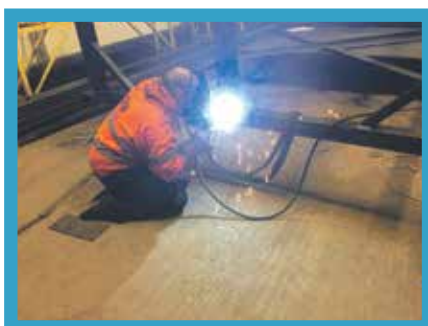
"A key advantage of GLW Engineering is the fact that we don't specialise in one thing, meaning we are always busy. We can offer engineering excellence in a large range of areas while consistently focusing on quality and a passion for what we do. In our eyes, the customer always has to come first, and so our service is second to none."



Certainly, it seems that the only way is up for GLW Engineering. After moving to new workshops six years ago to accommodate their growing trade, the company is now running out of space and looking to expand again due to an ever-increasing customer base. If you would like to find out more information on GLW Engineering's full range of services, head to their website where free quotes are available upon request. Alternatively, you can contact the company using the details below.

**Contact**  
**T +44 (0)1945 464637**  
**info@glwengineering.co.uk**  
**www.glwengineering.co.uk**

## GLW Engineering & Construction Ltd



### EXPERTS IN STEEL FABRICATION

GLW Engineering has many years of experience in the design, manufacture and installation of their fabrications. All our staff are experts in their field, trained to the highest standards offering a friendly, efficient and professional service, each and every time.

We specialise in custom build objects in metal, built to a very high standard in our modern workshop. We use 3D CAD design facilities and employ experts in all areas of our work.

We are a customer focused business that offers flexibility, timely completion of work and the ability to create almost anything our clients want at competitive prices.

**Fabrication**

**Powder Coating**

**Shot Blasting**

**Steel Framework**

**Soda Blasting**

**Interclamp**

Please visit [www.glwengineering.co.uk](http://www.glwengineering.co.uk)

Telephone 01945 464637 | Email [info@glwengineering.co.uk](mailto:info@glwengineering.co.uk)



# A best available technique that is revolutionising breather Valve Testing

Assentech Sales Limited has introduced Vent-Less technology, a significant advancement for the tank storage industry. This technology is designed to reduce or eliminate harmful emissions by rigorously testing tank breather valves against the API2000 test criteria. Vent-Less technology identifies non-compliant valves, allowing operators to service, repair,



or replace these units. This not only ensures compliance with environmental regulations but also enhances operational safety by reducing the risk of fire or explosion.

A key feature of Vent-Less technology is its ability to measure, monitor, and quantify emissions. This data-driven approach enables users to

actively reduce emissions and provides valuable data for Environmental, Social, and Governance (ESG) and environmental reporting.

In addition to its environmental and safety benefits, Vent-Less technology offers financial advantages. By preventing product leakage, it reduces costs associated with product loss and shields businesses from potential environmental, litigation, and criminal fines and penalties.



The testing of breather valves, both when new and during their service life, is crucial. The testing equipment should meet the following criteria as per API2000 Section 5.4:

- 1. Pressure Approach:** The equipment should accurately measure and control pressure, provide clear indications of applied pressure, and test all tolerances.
- 2. Flow Approach:** The equipment should accurately measure and control flow rates, considering ambient temperature and barometric pressure.
- 3. Test Equipment Capability:** The instrumentation should meet accuracy standards, with calibration certification from accredited laboratories.
- 4. Traceability and Testing:** Test certification should be traceable to the individual breather valve, testing both pressure and vacuum ports, and recording all test data.
- 5. Environmental Reporting:** The leakage rate should be included in the test data, supporting ESG and CSR initiatives.
- 6. Accuracy and Reliability:** Automated test equipment is advantageous for avoiding misinterpretation of results, allowing test repeatability, solo operation, and rapid testing.

By adhering to these recommendations, operators can enhance testing accuracy, contribute to environmental reporting, and demonstrate their duty of care to their workforce and commitment to safety and sustainability standards.

Vent-Less aided a waste-to-energy facility to reduce its methane emissions from the equivalent of 200 double decker buses to just 0.2 of a bus. The leak rate dropped from 90cfh to 0.08m<sup>3</sup>/hour, cutting the per valve annual environmental impact cost from £62,000 to £57. This data was critical in defending against regulatory violations. Assentech also offers a free online methane leakage calculator to help manage emissions.

**Contact**  
**T 01726 844707**  
**info@assentech.co.uk**  
**http://www.assentech.co.uk**  
**https://www.linkedin.com/company/assentech**

**A Vital Tool to Evidence the Reduction in Fugitive Emissions for ESG and ISO 14001 Reporting**

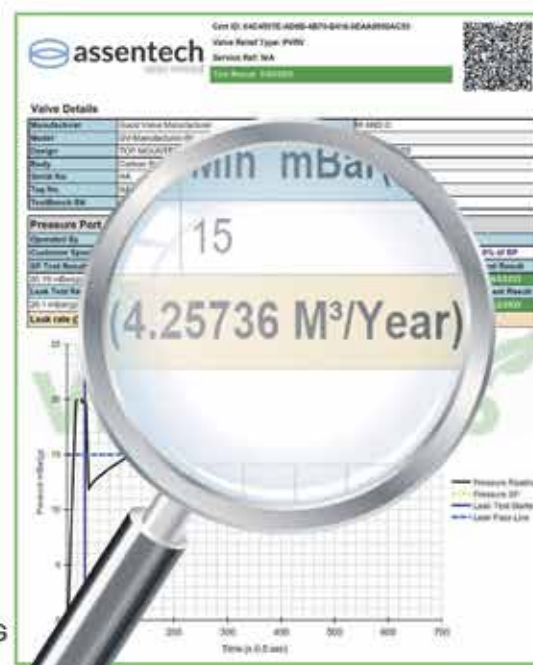
**VENT-LESS**

We are proud to launch the World's first range of fully automatic breather vent functional test benches.

Revolutionising testing through technology and innovation.

- ACCURATE AND AUTOMATIC CALIBRATION AND TESTING IN ONLY 2 MINUTES BY ONE OPERATOR
- CALCULATES PERFORMANCE AND QUANTIFIES VOLUME OF MEDIA LOSS
- REVOLUTIONARY SOFTWARE ALIGNED TO THE TEST PROTOCOL DEFINED IN THE INDUSTRY STANDARDS
- QUANTIFIES EMISSION VOLUME FOR ESG REPORTING
- REDUCES THE RISK OF EXPLOSIVE ATMOSPHERES FOR DSEAR COMPLIANCE
- IDENTIFIES LEAKAGE RATE TO REDUCE FUGITIVE EMISSIONS
- YOUR 'INDEPENDENT ASSESSOR'
- IDENTIFIES INEFFICIENT AND NON-COMPLIANT EQUIPMENT
- EVIDENCES TANK VENTING DUE DILIGENCE AND DUTY OF CARE
- INSTANT FUNCTIONAL TEST CERTIFICATE FOR EACH VALVE INCLUDING PRESSURE PROFILE
- EVIDENCES ADJUSTED SET POINT FOR INFORMED PROCUREMENT AND MAINTENANCE DUE DILIGENCE
- ENSURES COMPLIANCE TO INDUSTRY STANDARDS/RECOMMENDATIONS, IE API2000, ISO28300 AND EEMUA231
- IMPROVES PRODUCTION EFFICIENCY AND QUALITY OF MEDIA THROUGH IMPROVED SEALING
- EXTENDS LONGEVITY OF STORAGE TANK AND SURROUNDING EQUIPMENT
- CONTRIBUTES TOWARDS ISO14001 ENVIRONMENT FOR CONTINUAL IMPROVEMENT

"KEEPING THE TANK STORAGE INDUSTRY SAFE, COMPLIANT AND PROFITABLE"



+44 (0)1726 844 707  
 www.assentech.co.uk  
 info@assentech.co.uk



# Leading provider of accredited online NEBOSH and IOSH courses

**D**o you want to hone your skills in health and safety? Do you need to gain accredited certification in health and safety? If this sounds like you and you are looking for a reputable, flexible and indeed, reliable course provider for health and safety training, then look no further.

Wise Global Training is an award-winning, global provider of accredited health and safety training. Specialising in online NEBOSH and IOSH courses, the company caters for individuals all the way up to global organisations such as UNIDO and multi-national companies such as Smith and Nephew.

"We are a small family run company that offers a personalised service," said Dave Newgass, Managing Director. "When you contact us, you are more than just a number. We take pride in top notch customer service and realise that everybody is different and has different goals, so we try to cater to that. Safety isn't expensive – it's priceless."

At Wise Global Training, the company understands the struggles and frustration it contains when searching for an online health and safety course which fits your needs. Ensuring that the course can work to your schedule, budget and needs is of the utmost importance. With this in mind, Wise Global Training strives to eradicate the associated stress for searching for online health and safety courses, by providing a whole host of benefits with varied courses to suit the individual's needs.

With a wide range of accredited NEBOSH and IOSH courses, Wise Global Training offers essential training including:

- IOSH Managing Safely
- IOSH Working Safely
- NEBOSH National General Certificate
- NEBOSH International General Certificate
- NEBOSH International Technical Certificate in Oil and Gas Operational Safety

This is in addition to other ROSPA and IIRSM accredited short courses which are just a few hours in length, which can help to upskill your staff.

All of the training courses at Wise Global Training were written by trainers, with learners need's in mind. This emphasis had been a proven success for the company and has enabled Wise Global Training to



be able to provide material that contains the right tools and skills, to assist its clients to engage with the subject and course material. This is in addition to full tutor support which is guaranteed at no additional cost and its flexible approach allows and encourages users to study at their own pace. The courses are easy to access, and Wise Global Training also boasts an impressive 100% Pass rate on IOSH Courses, plus the added customer benefit of flexible payment plans available for all of its courses.

At the heart of its operation, Wise Global Training puts the individuals needs first and strives to provide full support and assistance to help users pass their health and safety course. Through this commitment to its clients, Wise Global Training has hundreds of satisfied clients that they deem as part of the Wise Global Training community. Feedback and testimonials have stated their appreciation at the extra help and excellent course material that Wise Global Training provides to help them gain their qualification.

Thanks to over 10 years of excellence in the industry, Wise Global Training has gained a renowned reputation for its health and safety training courses, positioning the company as a key player in the industry, well-known for its high quality courses, support and service.

Wise Global Training has been recognised over the last couple of years with a number of awards that the company has achieved, including: UK Enterprise Awards – Best Occupational Safety eLearning Training Provider 2020; Global Business Awards – Best Health & Safety Training Provider 2020 – North East England; Corporate Vision Education and Training Awards – Leading Provider of eLearning Training Courses – Yorkshire; Corporate Live Wire 2019 Global Awards – Health & Safety Training Providers of the Year; and CV HR & Training Awards 2018



– Best Health & Safety eLearning Specialists – UK.

With these prestigious achievements under its belt, Wise Global Training is consistently developing and is looking to expand its global reach with new offices in South Africa and the UAE. "We are now in negotiation with some international companies to help facilitate new synergies to increase global awareness of the company and our partners."

For more information on the company or to view its full range of courses, head to the website or get in touch using the details featured below.

**Contact**  
**T 01482 211989**  
**dave.newgass@wiseglobaltraining.com**  
**www.wiseglobaltraining.com**



The IOSH logo, which consists of the word "iosh" in a lowercase, sans-serif font inside a blue circle. Below the logo, the text "Approved training provider 1570" is written in a bold, sans-serif font.

The logo for Wise Global Training Ltd, featuring a stylized owl wearing a graduation cap and the text "Wise Global Training Ltd" and "safety isn't expensive, it's priceless".

The NEBOSH Learning Partner Silver 803 logo, featuring a stylized sunburst icon above the word "nebosh" in a bold, sans-serif font. Below this, the words "LEARNING PARTNER" are written in a smaller, all-caps font. At the bottom, "SILVER" and "803" are displayed in a large, bold font.

## Make the best use of your time

An illustration of a person sitting on a blue sofa, using a laptop. There is a potted plant on a table next to the sofa. A window in the background shows a city view with a large virus-like shape in the sky.

Make the best use of time for you or your staff by taking an accredited online health and safety training course. NEBOSH, IOSH and CPD Short Courses to help you use your time wisely. You can study from home and at your own pace.

- ✓ IOSH Managing Safely Online Course
- ✓ NEBOSH National General Certificate Online Course
- ✓ ROSPA, IIRSM, CPD accredited Short Online Courses

**Contact us today and we'll help you save time and money!**  
*Corporate discounts are available.*

01482 211989

wiseglobaltraining.com

info@wiseglobaltraining.com



# CAMB MACHINE KNIVES

## *"A Cut Above the Rest"*

### QUALITY IS OUR GUIDING PRINCIPAL

With over 34 years of experience supplying the machine knives industry. CAMB Machine Knives was established in the UK in 1989 and aimed to provide consistently high quality knives and service to a broad range of industry sectors. Based on these guiding principals, CAMB Machine Knives has flourished and grown throughout Europe, USA in 25 countries worldwide establishing a reputation for high quality products and service.

### CAMB MACHINE KNIVES INTERNATIONAL REACH

CAMB Knives International really does have an international reach with a network of exporters and carriers - with offices both in the UK along with agents in Spain, Netherlands, Italy, Germany, South Africa and many more so you'll never be far away from a CAMB Knives representative.



### KNIVES FOR INDUSTRY – WE'LL SUPPLY IT

Our range includes many types of blades, but not limited to:

**CIRCULAR KNIVES**

**GRANULATOR KNIVES**

**POULTRY KNIVES**

**RAZOR BLADE KNIVES**

**STRAIGHT KNIVES**

**TOOTHED KNIVES**

**TRAY FORM KNIVES**

**TOP/BOTTOM KNIVES**

**ZIG ZAG KNIVES**

#### CAMB MACHINE KNIVES INTERNATIONAL LTD

Tel: 01454 322178 | Fax: 01454 321172

Email: [sales@camb-knives.co.uk](mailto:sales@camb-knives.co.uk)

[www.camb-knives.co.uk](http://www.camb-knives.co.uk)

MANUFACTURERS AND DISTRIBUTORS OF MACHINE KNIVES TO ALL INDUSTRIES





# Hand protection that is a cut above the rest

Since the company was established in 2020, its mission has been to bring change to the end-user experience in selecting and buying industrial gloves, gauntlets and sleeves (PPE). As the designer and manufacturer of such an innovative range of quality industrial hand protection that is available for all industrial applications, Manosun is breaking the mould of traditional offerings with a core range of hand protection that are safe and the perfect fit for anyone that requires PPE.

"We believe our services outweigh that of any competitor because as well as our core-range



of products, Manosun offers a quick turnaround product development process where we evaluate the end-user's processes and tweak/develop a more fit for purpose product. As well as our FOC site-survey to enhance any risk assessment, we also add volume to any work operating procedure," stated Steven Patterson, Country Manager UK & Europe.

Manosun breaks its products down into three category's that ensure excellence, longevity and value for money. Each product is made to the highest 'Quality' meaning only the best quality materials and yarns are used to ensure a long-life product that can be used over again without wear or tear, and that also give comfort

to all users. 'Service' – Manosun prides itself on its quick turnaround service whether than be an order process, sample request, or site survey. Lastly, 'Value,' Manosun believe that not only does the cost-in use value matter but also its business values too. "We work closely with our distributors and end-users to nurture them in a partnership arrangement that supports each other's enterprise," added Steven.

Manosun's current portfolio consists of a large range of hand protection products where it works with all end-users including globally known brands such as Nissan, JDR Cables, and SUEZ. Also part of its service, Manosun will survey any work environment, advise on the correct level of hand protection needed or if needed, and will even develop a brand-new product to the exact requirements of the customer.

For the past 12 months, Manosun has been concentrating on the growth and awareness of the brand. It's initial approach to 2023 was to increase the awareness its products and dedicated a quarterly plan that would see them employ two new field sales persons in Q1. The first started on May 22nd and the second will start in the following six months.

From there, the plan is to keep moving in an upwards trajectory for the rest of 2023 and beyond. "Moving forward, we will continue to grow our range of products. In 2023, we launched the Manosun BASIC range (not yet on the website). This is a range of gloves that contain rPET created from recycled materials (Plastic) to make industrial Polyester, each pair of gloves contains on average 36% recycled materials. Having a commitment to excellence

means everything to Manosun, which is why we work with the BSIF as well as local networking and support groups NEAA (North East Automotive Alliance) and the AMF (Advanced Manufacturing Forum) to learn and adopt Best Working Practise from local industry as well as National and European requirements as a PPE provider/ manufacturer currently instructed by the BSIF."

**Contact Steven Patterson:**  
T +44 (0)7468 904409  
steven.patterson@manosun.co.uk  
www.manosun.co.uk



### OUR GLOVE RANGE INCLUDES



**ARC**  
Primarily developed for electrical ARC flash protection, our range of gloves offer many other benefits.



**IMPACT**  
Designed to protect the user's hands from injury if their grip was to slip or tools that are being used fall.



**CUT**  
A range of industrial cut resistant gloves that offer comfort to the user and cost effective solutions.



**SPECIALITY**  
Our specialist range of gloves protect the user in various environments including cold and chemical-based.



**GENERAL**  
The general handling glove range has been made from the best quality materials.



**BASIC**  
A quality economy, sustainable range to compete in a market of own-brand price-fighter gloves.

## THE FIRST POINT OF PROTECTION

### Manosun Hand Protection

A manufacturer and designer of industrial safety products

- Manosun was created during the 2020 global pandemic when industry took an all-time low in productivity
- Located in South Tyneside, the co-creator of the brand has over 16 years of industrial product development and 15 years within manufacturing including Health & Safety
- Our aim is to target the huge UK manufacturing sectors as well as power generation and conservation and offer a quality service, product and development ability, not all solutions can be found off the shelf
- We work with your traditional distribution supply chain so no need to work outside of any contractual obligations, your are free to develop and select your PPE requirements
- Manosun Ltd is also a member of the BSIF a sign and seal of quality and products that fulfil all UK and EU requirements of test and design.

Talk to Manosun for all of your hand protection needs.

Tel: 0191 300 8699  
Email: admin@manosun.co.uk  
Web: www.manosun.co.uk

f www.facebook.com/manosun  
in www.linkedin.com/manosun





# Providing solutions for your force or torque measurement applications

Interface Force is an internationally recognised brand and decades of experience have gone into making Interface manufactured load cells the benchmark for thousands of users around the world, and Interface Force Measurements was established in 1996 by Neil Johnstone.

Based in Crowthorn, Berkshire, Interface Force distributes to the whole of the UK & Ireland, but also overseas, especially

into Turkey, Greece and the Middle East. The company is a primary distributor for Load Cells manufactured by Arizona-based Interface Inc., and it also supplies their Torque Transducers, associated electronics, multi-axis load cells and the XSensor Pressure Mapping systems.

The global Interface Inc. is represented by a large network of distributors outside of the US, and they have requested

products that are designed and manufactured in metric, with the precision and accuracy of all Interface products. These products are designed for an international buyer and user, and all specifications are in metric specs, a global standard for force measurement products.

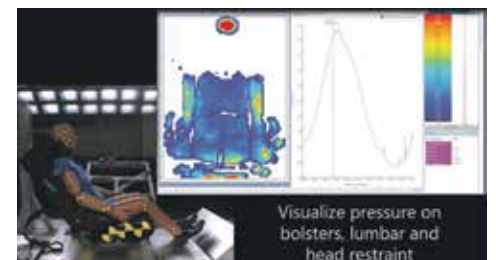
Interface Force work mainly with aerospace, automotive, and motorsport companies, and Business Development

Manager Tony Rokins told us, "We work closely with companies which are undertaking research into product development, and so this includes universities and also medical companies who need load cells for weighing saline bags – we have a very wide and varied client portfolio."

In this crowded industry, Interface load cells and torque sensors have a hard-won reputation for reliable, accurate and repeatable test results. The range of pressure sensors and pressure mapping systems from industry leaders GP50 and XSensor back this reputation.

Tony continued, "With regards to force measurement, our load cells are preferred by aerospace companies because they are highly accurate, and the results are very repeatable. Also, the devices themselves are extremely reliable and so they are looked on very favourably by both automotive and aerospace manufacturers in particular."

Interface Force is currently re-launching its XSensor High Speed Pressure Mapping System – the company offers a range of pressure mapping systems that can



be applied to anything from impact testing to pressure testing tires, runways, beds, seats and much more. The XSensor system is the first system design to allow product designers and safety testing engineers to see, record and evaluate the distribution of force from high-speed impacts on safety equipment such as helmets and body armour.

The system is particularly popular with automotive and aerospace seating manufacturers as evaluating the performance of helmets and other protective equipment designed to prevent injury requires detailed understanding of the pressure distribution on the body surface during dynamic impacts. XSensor's high speed HS Impact system combined with the thin conformable sensors allows customers to accurately measure those pressures and evaluate how different design configurations affect pressure distribution on impact.

In addition to this, the system is also used by manufacturers of office seating, companies that develop seating for the home, and bed manufacturers.

In spite of its success in the industry, Interface Force is very much looking to future development. Tony informed us, "We are building new Applications which are based around renewable energy, and we are also developing Cloud-based, Wifi and Bluetooth data acquisitions by making our devices wireless. This would mean customers being able to collect data from anywhere in the world via an App."

This ever-growing comprehensive range of indicators, signal amplifiers, data loggers and wireless transmitters has been designed to complement the extensive range of load cells, torque transducers and pressure sensors, and the range has developed to ensure that customers have access to the most accurate, up-to-date, and cost-effective devices available.

Another new development is in the Airport environment, where Interface Force have begun to provide wireless monitoring of equipment on, for example, luggage carousels, and this product among many others have helped Interface Force to have a very successful past 12 months especially.

**For more information, please see below:**  
T +44 (0)1344 776666  
info@interfaceforce.co.uk  
www.interfaceforce.co.uk



## Automotive R&D

Whatever you need to measure  
We have the sensors



FORCE • TORQUE • PRESSURE



+44 (0)1344 77 66 66



info@interfaceforce.co.uk



www.interfaceforce.co.uk



# ***Davies Turner***

## **Your worldwide freight and logistics partner since 1870**

Our mission, quite simply is to satisfy the international freight and supply chain needs of our clients. This has remained a constant ambition since our foundation in 1870.

We continue to take pride in providing a professional and award-winning portfolio of services that are reliable, time/cost-effective, and tailored to the unique requirements of our customers. As one of the first Customs – Authorised Economic Operators in Europe, our focus on service, compliance and supply chain security has been acknowledged as market-leading.

Davies Turner Rotherham offer many unique ways to arrange your shipping requirements. If you have something out of the ordinary, requires special licences, needs packing, heavy lifting or anything out of the 'normal,' contact our Rotherham office who will never refuse to quote on something unusual and will always take on the challenge.



**Catering for all your freight needs**  
**[www.daviesturner.com/specialist/rotherham-specialists](http://www.daviesturner.com/specialist/rotherham-specialists)**  
**T 01709 529709 | F 01709 529710**  
**Email [rotherhamsales@daviesturner.co.uk](mailto:rotherhamsales@daviesturner.co.uk)**



# Hat-trick Award for Davies Turner Group

For the third successive year, the Davies Turner Group have been presented with an internationally-recognised award by the Royal Society for the Prevention of Accidents, RoSPA Gold Award, further solidifying this company's position as a worldwide freight and logistics partner.

Davies Turner provides pioneering direct UK weekly rail services in conjunction with their long-term partner in China, Air Sea Transport, who has years of experience in the China rail sector.

Since 2016, Davies Turner have operated China to UK rail services for full load (FCL) and groupage (LCL) shipments, assisting clients with their supply chain needs by reducing shipping times in comparison to Sea Freight. The availability of their import



Established over 150 years ago and as one of the first companies in Europe to become accredited as a Full Authorised Economic Operator, this forward-thinking company is now a bona fide international freight forwarder, with an award-winning pedigree.

The group has 15 UK branches, including a head office in Birmingham.

We caught up with Andrew Ford, Branch Manager in Rotherham, Yorkshire to find out more, "The Rotherham branch specialises in awkward and out-of-gauge shipments, shipping many vehicles ranging in sizes and type to small rail engines as well as large machinery moves around the world. Alongside this they offer standard freight forwarding – which means the Rotherham Branch can assist in almost all enquiries they receive: 'from an envelope to a large project.'"

"We have an extensive knowledge of the services that we offer within our branch, with our dedication to detail to ensure where possible shipments smoothly and clients are updated should there be any delays out-of-our-control."

"We have had a good start to this fiscal year, which was surprising with the current downturn in world trade. Our short-term plan is to improve our office environment with some renovations and also look at team building activities that had to be



suspended throughout COVID. We are also looking at more training for our staff so they can gain even more experience and knowledge to help assist our clients."

Despite most of the COVID-pandemic restrictions lifting and shipping costs starting to decrease, the world of international freight still has to contend with the challenges posed by the war in Ukraine, port strikes and a near-global recession.

Davies Turner offers a light at the end of a gloomy tunnel with its express freight rail service and its extensive European overland portfolio with direct groupage, part load and full load trailer services. Customers can choose between express transit and super-express options, in a thoroughly streamlined system.

This year's Royal Society for the Prevention



of Accidents (RoSPA) Health & Safety Awards have been added to a growing collection of awards: the prestigious European Logistics Category Award from The British International Freight Association (BIFA), shortlisted for the Supply Chain Management category and now Building Update's logistics Company of the Year, which has delighted Andrew and his team, "We are obviously very pleased to be selected, we pride ourselves in the service we offer to our clients and we appreciate the recognition."

**For all transportation quotations and further information, please see the details below:**  
**T 01709 529709**  
**rotherhamsales@daviesturner.co.uk**  
**www.daviesturner.com**

rail services has been vital to clients since the advent of the pandemic, where many importers witnessed shipping line ocean transit time delays, port delays and air freight became cost prohibitive for many large volume or dense cargo shipments.

With confidence and demand for China rail freight services soaring, as evidenced by the 50,000th China-Europe intermodal train embarking on its journey towards the west at the beginning of February this year, Davies Turner have introduced and support a dedicated weekly eastbound rail service for LCL cargo, having undertaken successful trials.





# BARTELS & VEDDER

Interdisciplinair Ingenieurs & Consultancybureau



**Reference:** floating park, floating office and floating houses in the Rijnhaven Rotterdam, The Netherlands



**Reference:** floating villa's in the Lentse plas Nijmegen, The Netherlands



**Reference:** 6.000m2 floating ferry terminal, Malaysia



**Reference:** floating dairy farm in Rotterdam, The Netherlands

**BARTELS & VEDDER BV** is an engineering firm, specialized in engineering structural and infra structural projects on both land and water.

We have developed an expertise in 'Flood Proof' building, such as floating.

Some of our referenced projects are shown in the pictures. Our engineering and advice concern the following types of 'Flood Proof' projects:

- Floating houses and villa's
- Floating parks
- Floating offices
- Floating islands
- Floating neighbourhoods and cities
- Floating solar
- Floating jetties
- Mooring structures
- Fendering
- Bridges

We offer the following services:

- Structural calculations
- (3D BIM) drawings
- Structural advice
- General project advice
- Monitoring and guidance

For more information, we invite you to visit our website:

[www.bartelsvedder.nl](http://www.bartelsvedder.nl)

Call us:

**+31 6 422 398 53**

Email us:

[info@bartelsvedder.nl](mailto:info@bartelsvedder.nl)

[info @bartelsvedder.nl](mailto:info@bartelsvedder.nl)

[WWW.BARTELSVEDDER.NL](http://WWW.BARTELSVEDDER.NL)

**+31 (0) 6 422 398**



**Fluregiene 200™**  
provides protection for  
hygiene conscious parts  
and surfaces

- Excellent corrosion resistance
- Low friction anti-fouling and anti-stick properties
- Durable and easy to clean/wipe down
- Permanently applied to metals, alloys and plastics
- Built-in antimicrobial technology actively reduces microbes on the surface of the coating.
- Reduces fungal growth and surfaces stay fresh longer

For more information about  
**Fluregiene 200™** call us  
now on **+44 01386 425755**  
or email **info@cwst.co.uk**



Easy cleaning of hygiene  
conscious parts



Reduces microbial growth



Permanent coating protection

**CURTIS -  
WRIGHT**

**Everlube® Products**



# Fluregiene 200™ Protecting your surfaces for longer.

Low friction PTFE  
based coating  
containing **BioCote®**  
**antimicrobial**  
**technology**

Fluregiene 200™ provides  
protection for hygiene conscious  
parts and surfaces

- Excellent corrosion resistance
- Low friction anti-fouling and anti-stick properties
- Durable and easy to clean/wipe down
- Permanently applied to metals, alloys and plastics
- Built-in antimicrobial technology actively reduces microbes on the surface of the coating.
- Reduces fungal growth and surfaces stay fresh longer



Easy cleaning of hygiene  
conscious parts



Reduces microbial growth



Permanent coating protection

For more information about **Fluregiene 200™** call us now on  
**+44 01386 425755** or email **info@cwst.co.uk**

**CURTISS -  
WRIGHT**

**Everlube® Products**



# Oliver Hydcovalves supports Hydrogen production

Oliver Hydcovalves is excited to be supplying a large number of its PN16 flanged single isolate ball valves to Hydrogen production projects in the North of England.

The advancement of hydrogen technology presents an exciting solution to the world's future energy needs, and the reliance on safe and reliable ancillary products such as valves to facilitate the transition is as critical now than ever

before. This is where Oliver Hydcovalves is leading the charge. Energy industries and OEMs are investing heavily in hydrogen applications, and it will require more large-scale production and storage facilities to help meet the growing appetite for hydrogen, and make it an efficient and affordable fuel source for industrial and domestic use. The production of hydrogen is achieved through methods such as steam reforming, gasification, or electrolysis. These

methods separate the elements into various compounds, producing the usable H<sub>2</sub> molecules.

**For more information on how Oliver Hydcovalves can supply your hydrogen production with the very best valve solutions, contact them on: +44 (0)1565 632636, email: [sales@valves.co.uk](mailto:sales@valves.co.uk) or visit: [www.valves.co.uk](http://www.valves.co.uk)**



## Industrial Processing & Applications

**CML** INNOVATIVE TECHNOLOGIES  
*WHERE INNOVATION COMES TO LIGHT*  
A Grupo Antolin Company

**LED LAMPS**

**CUSTOM BUILD**

**CONTRACT ASSEMBLY**

**PANEL MOUNT INDICATOR**

**CUSTOM SOLUTIONS**

**TOWER LAMPS**

**KITTING FACILITY**

**STOCK HOLDING**

Contact CML customer service **now** to discuss your requirements or for Stockist information.

**CML Innovative Technologies Ltd.**  
69/70 Eastern Way, Bury St Edmunds,  
Suffolk, IP32 7AB, United Kingdom  
Tel: +44 (0) 1284 714700 email: [uksales@cml-it.com](mailto:uksales@cml-it.com)  
[www.cml-it.com](http://www.cml-it.com)



## Control Devices

### British Encoder Products



Encoders are essential components in many industrial automation systems, providing precise and accurate measurement of the position, speed, and rotational angle of a moving object. One of the most common applications of encoders is in conveyor systems, where they play a critical role in ensuring the smooth and efficient transportation of raw materials and finished products.

A typical conveyor system consists of multiple conveyor belts that transport raw materials and products throughout a plant. The movement of the belts is controlled by a central control system, which relies on information from encoders to accurately control the speed and position of the belts.

Encoder technology has evolved in recent years, offering advanced features such as digital outputs, high accuracy, and high-resolution measurement. These advanced features have made encoders a cost-effective solution for improving the performance of conveyor systems.

One of the key benefits of using encoders in conveyor systems is the ability to precisely control the movement of the conveyor belts. This is achieved by measuring the position and velocity of the belts and providing this information to the control system, which can then accurately control the movement of the belts. This results in a reduction in production delays and an increase in efficiency, as raw materials and finished products are transported smoothly and efficiently throughout the plant.

**Contact our team of experts to get your ideal motion control device:**  
**T +44 (0)1978 262100**  
**[sales@encoder.co.uk](mailto:sales@encoder.co.uk)**  
**[www.encoder.co.uk](http://www.encoder.co.uk)**

**RMIG** Solutions  
*we make ideas come to life*



RMIG is the world's largest manufacturer and supplier of perforated metal and its related products.

We know our customers' requirements for price and quality and meet their demands with uncompromising service.

Not only do we offer standard and bespoke perforated metal sheets, we are able to offer you a range of secondary operations as detailed below.

**Complete solutions**  
With a continued investment in the latest equipment and a network of professional partners we are able to produce prime quality products and solutions – from a simple perforated sheet to the fully formed and coated custom made part.

**Cutting**  
We can cut and shape perforated sheet to meet the needs of your final application.

**Levelling**  
For some applications a high degree of flatness is required, we have processes in place to ensure our perforated coils and sheets meet with your most demanding requirements.

**Rolling and forming**  
We can roll, bend and form perforated sheets to match your design.

**Aesthetic finishes and protective coating**  
We can offer powder coating and hot dip galvanizing solutions to meet your specifications.

For more information please contact us tel: 01925 839610 | email: [info.uk@rmig.com](mailto:info.uk@rmig.com) | [www.rmig.com](http://www.rmig.com)



## Dance, Stage & Event Floors

### The world performs on Harlequin Floors

**H**arlequin is the world leader in advanced technology floors for the performing arts, entertainment and display.



Established in the UK over 40 years ago, Harlequin remains the industry choice for the world's most prestigious dance and performing arts companies, theatres, venues and schools, production companies and global events.

The floor is a dancer's most important work tool; not only is it the canvas for their creativity, it also gives them protection against slips, falls and longer-term stress injuries. It is a common assumption that a well-designed sports floor will suit the needs of dancers, but this is not the case. There may be a temptation to specify floors for aesthetic or budget reasons, or to specify sports floors in the mistaken belief they will be suitable for dance but only a floor developed specifically for dance will do.

Harlequin's experience and reputation are founded on the design, manufacture, supply and installation of a range of high quality portable and permanent sprung and vinyl floors chosen by the world's leading venues – from the Royal Opera House to the Paris Opera Ballet to the New Zealand Ballet.

**Harlequin is the global leader in its field with offices in Europe, the Americas and Asia Pacific.**

**T +44 (0)1892 514888**  
**enquiries@harlequinfloors.com**  
**https://uk.harlequinfloors.com/en**

## Industry

### Manage your assets with RFID



**M**ajor operations involve hundreds or thousands of different assets and it's easy for valuable equipment to be misplaced or lost. Taking inventory of your assets is a time-consuming and sometimes inaccurate process. That's where RFID Asset Management comes in. With all of your assets monitored by RFID tags and readers, you can know exactly what equipment you have available in real-time. That information helps prevent losses and helps you make informed business decisions. But the benefits don't stop there.

With RFID, you can track not only the location of the asset, but also its condition. RFID tags enable you to instantly see when equipment was last inspected and when it's due another inspection or to be replaced. This reduces downtime because you can repair or replace important equipment at the right time.

If you have valuable fixed assets and are having trouble keeping track of them, an RFID asset management solution can not only save you time with manual tracking, but also save you money by reducing lost assets and improving maintenance.

RFID Asset Management is suitable for large or small businesses, with flexible monthly plans available.

Ready to get started with RFID asset management? Contact TEC-RFID for a free consultation and online demo.

**T 0844 870 7873**  
**info@tec-rfid.co.uk**  
**www.tec-rfid.co.uk**

## Electrical Products

### Gromtec Europe: The SIMONBOX

**W**hy can you never find a power socket where you require one? The SIMONBOX is an IP66 rated (Weatherproof) single socket floor outlet, designed for installation in hard floor and patio areas, which have an occasional power requirement. When closed and not in use the unit achieves its IP66 rating. When open and in use, it is IP20 rated. The SIMONBOX is installed in a wide range for installations including Tennis and Football Stadiums, Airports, Car Showrooms, Department Stores and John & Janes back garden! No more trailing cables and trip hazards, the

SIMONBOX delivers power to where it is required. Available in either a stainless steel or brass finish the top section is available in a range of socket options. There are 2 back box options for screed or raised floor installation, such as decking.

**Available through your local electrical wholesaler or online.**  
**For more information, please visit:**  
**www.simonbox.co.uk or call:**  
**0203 286 7949.**



**Simonbox**  
**IP66**  
**Waterproof**  
**Floor Outlet**

**Gromtec**  
europe UK

Available from your electrical wholesaler

**Occasional Power**  
**Outlet ideal for**  
**concourse, garage**  
**showrooms, pop**  
**up display areas**

Available in two finishes

For more information  
[www.simonbox.co.uk](http://www.simonbox.co.uk) - 0203 2867949

## Industrial Applications

### High Quality Panel Mount Indicators

**CML IT continues to be the number one supplier of panel mount indicators, LED lamp replacements and LED tower lamp solutions.**

**PMI highlights include:**

- Plastic and metal bezels with a wide range of options in stock.
- Development of custom solutions.
- IP40 and IP67 ratings.
- UK manufacturing facilities.

**Contact our Customer Services department to discuss your requirements today.**

**Visit our website at:** [www.cml-it.com](http://www.cml-it.com)

**CML Innovative Technologies Ltd,**  
 69/70 Eastern Way, Bury St Edmunds,  
 Suffolk, IP32 7AB, United Kingdom  
 Tel: +44 (0)1284 714700  
 email: [uksales@cml-it.com](mailto:uksales@cml-it.com)



# Fun on the farm

Rutland Farm Park is a small 18-acre Victorian working farm, within the beautiful town boundary of Oakham, Rutland and perfect for visitors from Leicester, Peterborough, Nottingham, Northampton and Newark.

The farm park was established in 1970 by John and Daphne Ball, after they returned home from teaching in Kenya. They took over the running of the family farm from John's father and decided to add an educational element to the farm. The couple worked closely with Joe Henson: founder of both the Cotswold farm park (now Adams Farm) and the Rare Breeds Survival Trust) and bought rare breed livestock from him.

"The farm has two main functions: a small family-run working farm in a beautiful Victorian farmyard and the farm park. The farm park is a visitor's attraction with a wide range of animals, Daphne's tearoom and a gift shop.

Visitors tell us we are the true epitome of the childhood real farm image and not a manufactured plastic attraction built to generate profit for shareholders. We concentrate on conserving rare native breeds of animals at the farm park. Some breeds are on the priority 'to save' list, making the



loss of the breeds highly likely. This includes our Clydesdale and Shire horses, Lincoln Longwool and Oxford Down sheep, the Saddle Back and Gloucester old spot pigs," explained current owner, Julie Ball.



The conservation of the rare native breeds continues the work of John and Daphne Ball's original vision, through the current fourth and fifth-family generation, making this a truly educational experience for families and children.

The family-run farm park welcomes schoolchildren visits and offers a 30% group discount on admission charges. The team are currently working hard to open the nearby woodland for visitors to enjoy and are in the process of converting the pigsty to a covered weatherproof area for school groups, children's parties and craft-lead workshops.

Rutland Farm Park guarantees old-fashioned friendly fun and it really is the perfect family day-out for all generations, from grandparents to grandchildren.



It provides the opportunity to foster a lifelong learn of animals for children, where they are welcome to enjoy cuddle time with the guinea pigs, as well as feeding the alpacas, llamas, cows and sheep.

There are lots of workshops and fun events throughout the year: keep an eye on the Facebook page for upcoming events.

All events can be booked online, with a 10% discount on admission for military and blue light cardholders.

There are toilets and baby changing facilities located throughout the site and free parking.

For more information and to make an online booking:  
T 01572 722122  
info@rutlandfarmpark.co.uk  
www.rutlandfarmpark.co.uk  
@rutlandfarmpark  
www.facebook.com/rutlandfarmpark

53

BRANDS OF AIRGUNS WITH FULL RANGE OF ACCESSORIES

TRADING SINCE 1990



was £189.95  
**Now £144.95**



**£169.96**



was £71.94  
**Now £59.95**

Air Pistols | Air Rifles | Blank Firing Guns | Shotguns | Rifles

Bullets | Cartridges | Dog Training | Optics | Accessories

None Lethal | Catapult Slingshot

SALES HOTLINE: 01827 215222  
Mon-Fri: 9.00am-5.30pm – Sat: 9.00am-3.30pm  
Email: sales@solware.co.uk | www.solware.co.uk  
Unit 1, Tame Valley Business Centre, Tamworth B77 5BY



