

BUILDING UPDATE

ISSUE: 664 April 2023 | www.solutionspublishing.co.uk

Eco Clipper FM4 Sport for sporting grounds

Eco Clipper offers large area mowers that help Field Managers minimise mowing costs while producing a clean cut result. The Eco Clipper mowing system was originally developed to replace the cylinder mower in turfgrass production. The goal was to maintain the cutting performance of a properly tuned cylinder mower, but not the high maintenance requirement and sensitivity to mowing conditions, like wet grass and weeds.

The system

The smooth cutting decks with fast rotating small blades ensure a high quality of cut and a good distribution of the clippings. The clippings are also well spread in wet grass. This makes it possible to schedule this mower almost independently of the weather.

Due to the electrically driven blades, the mower is very economical and quiet. The large wheels and clever deck linking system ensure good



contour following and enable high mowing speeds.

Municipalities and sports field and park managers have also discovered the advantages of the Eco Clipper mowing system. For them, Eco Clipper offers the EC-FM4 Sport. This 4.11m wide mower has four independent cutting decks. The forward position provides excellent visibility and comfort for the tractor operator.

The benefits

Users report high productivity gains, a factor two compared to 5-gang self-propelled cylinder mowers, and appreciate the low maintenance and the ability to schedule the mowing even under less favourable mowing conditions, such as early morning dew and wet autumn.

For more information, please contact: info@vanmac.co.uk or visit: www.ecoclipper.com



Alugate: Bespoke Premium Aluminium Gates



Aluminium gates are an increasingly popular gate choice, but with so many options available, how do you choose?

Like any type of gate, aluminium gate prices vary considerably depending on the options you choose.

Aluminium, as a raw material, is generally more expensive than steel but because aluminium has outstanding strength and durability, a gate made in aluminium will last far longer and it won't need any maintenance.

There are many types of aluminium gates available from bolted, bonded and screwed to fully welded gates, and in different profile thicknesses. A bolted gate will cost less than a fully welded gate because of the manufacturing process. A thicker profile means more aluminium therefore a higher price.

Alugate's Managing Director, Stewart Phillips, explains, "If you want an aluminium gate that will last a lifetime, a fully welded gate with a 3mm profile is the perfect

choice offering superior strength and durability.

"At Alugate our welded aluminium gates use 3mm aluminium profiles so they're extremely strong, which means we can manufacture larger gates; up to a 10m opening on swing gates and 8m on a sliding gate.

"Our innovative manufacturing processes combine an internal weld so that water is not retained, a 3-step sanding process ensuring a smooth surface that is perfect for powder coating and super durable Qualicoat class 2 powder coating so they are fully resistant to corrosion – so that you get the very best gates."

Alugate aluminium gates are custom made and they also offer a free bespoke design service. With a 10-year warranty, an aluminium gate from Alugate will stand the test of time.

Take a look at the new Alugate gate collection at: www.alu-gate.co.uk or give their expert team a call to discuss your requirements on: 0114 3499599.



UNISIG
see them on.....IV-V



CheckedSafe
see them on.....VI



Vandecasteele
see them on.....VIII



Blue Run Ltd
see them on.....IX



LS Products
see them on.....X



Tuff Waterproofing
see them on.....XIII



Accon UK
see them on.....XIII

MISCELLANEA
of Churt

One Destination
-Two Extraordinary Venues -

www.theSCULPTUREpark.com

Superb Bespoke Interiors, Bathrooms, Kitchens & Bedrooms

A unique one-stop shopping experience for all your interior & exterior design & decoration requirements.

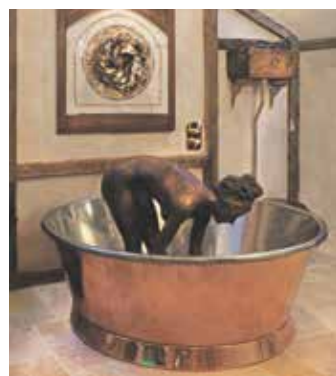
The most atmospheric sculpture park in Britain

More than 300 internationally renowned artists exhibiting sculptures for sale within ten acres of arboretum & wildlife inhabited water gardens.

www.miscellanea.co.uk
www.thesculpturepark.com
Curator: 07831 500506

The Sculpture Park, Jumps Road, Churt, Surrey GU10 2LH
Tel: 01428 605453

Miscellanea, Crossways, Churt, Surrey GU10 2JA
Tel: 01428 714014



Signs, Plaques & Architectural Castings

Expert architectural metalwork for high-profile heritage buildings

Leander Architectural are expert design manufacturers of bespoke signage, bandstands, railway columns, gazebos, street furniture, wayfinding signs with a heritage restoration consultancy. The niche services offered are an eclectic mix of, blacksmithing, iron restoration, clay sculpting, decorative and structural iron, steel, and non-ferrous fabrication, metal casting for commercial trade, heritage and railways and private customers.

The Royal Label Factory was established during the reign of Queen Victoria in 1874 and even manufactured labels for the spectacular gardens of Queen Victoria herself. The prominent company progressively became a leading UK street signage manufacturer.

Leander Architectural was founded in 1986 and in 1998, the two businesses joined forces to become a phenomenal UK powerhouse in the world of architectural metalwork, manufacturing bespoke aluminium, steel, bronze and iron products.

Situated in the village of Dove Holes, near the Georgian spa town of Buxton in the High Peak District: Leander Architectural offers world-leading commissions from its on-site foundry and workshops.

The team at Leander take such artistic pride in their work: utilising both modern techniques like waterjet cutting and computerised graphics, combined with more traditional skills such as clay hand-carving, resulting in a truly unique architectural metalwork portfolio. Many customers are repeat customers, trusting the highly skilled professional approach and end results.

Recent prestigious projects included designing new cast iron columns to repair a roof structure and replicate original features at an operational railway station: designed and built during the Victorian era as Managing Director, Gareth Roberts explains, "Several of the cast iron columns were cracked and needed replacement, due to ground subsidence. The damaged sections of cast iron columns were removed, then new ones installed, without removing the roof. Our skilled engineers worked with the prime contractor to carry out the design and

manufacture, smoothly and efficiently, allowing the busy commuter station to carry on working without significant disruption."

Leander has an extensive back catalogue of casting patterns and designs for bandstands, structures, columns and many other products, but are always more than happy to offer bespoke services too.



Other high-profile projects include the installation of new canopies at the luxury Savill Court Hotel in Windsor, rebuilding the original staircase balustrading in eight stairwells, with modern adaption of the handrails at the Buxton Crescent Luxury Spa Hotel and installing new bespoke decorative metalwork within the new 'Sprague Terrace' between the Sondheim and Gielgud Theatres in London's West-End.

With a combined history dating back almost 150 years, this leading architectural metalwork company offers unrivalled expertise across a multitude of modern and heritage building designs.

The team use 100% British raw materials and recycled aluminium, supporting the local and national economy and trading with a reduced carbon footprint.

To find out more, please see the details below:
T 01298 814941
sales@leanderuk.com
www.leanderuk.com

BESPOKE STRUCTURES, COLUMNS & CASTINGS ARE A SPECIALITY!



TOP QUALITY & EXCEPTIONAL SERVICE FOR OVER 140 YEARS...

Manufacturers and designers of high quality fingerpost signs, bandstands/gazebos (restoration & new), canopies, balconies, signage, plaques, street furniture and much more. Our restoration consultancy is regularly used by local authorities and other bodies looking for advice and assistance – particularly with bandstands, railings and park features.

- Bandstands, Balconies, Verandas, Canopies etc.
- Bronze & Aluminium Plaques
- Wayfinding Solutions
- Restoration Work
- Architectural Castings
- Custom Columns & Spandrels
- Blacksmithing & Fabrication Services

01298 814941 • sales@leanderuk.com

Please visit www.leanderuk.com



Manufacturers of
Fine Structures and
Signage Solutions



Lighting & Electrical

Providing Power Distribution Products for over 40 years

Fisher & Company have been manufacturing and designing their own products for over 40 years. Products for the highways & streetlighting, outdoor power, leisure and sports facilities, car parks, markets and now EV charging. They also make bespoke products for customers where particular requirements are specified.



The Somerset-based company is a leading supplier of Feeder Pillars and Wall Boxes, Sign & Light Brackets, Belisha & Refuge Beacons: mains & solar and electrically insulated digging tools.

Since gaining their ISO 9001:2015 Quality Accreditation during Lockdown, Fisher & Company have added to its list of overseas customers: exporting to new countries including Cyprus and Hong Kong.

2022 has been the busiest year on record, with several large UK projects.

Interest in Fisher & Company's two main products: Belisha Beacons and Feeder Pillars has increased from new companies. These include: schools, hospitals to commercial developments, all discovering the high-quality service and products meet both their specifications and quick delivery expectations.

T +44 (0)333 666 2122
info@fisherandcompany.co.uk
www.fisherandcompany.co.uk
Twitter https://twitter.com/FeederPillars
LinkedIn https://www.linkedin.com/company/fisher-company-ltd

Feeder Pillars for every purpose from Fisher & Company...



- Traditional Range
- 3 & 5mm Heavy Duty - FFP Range
- Versatile BD Range
- Mini Pillar SDMP Range
- GRP Range inc. Bespoke

- Bespoke and Made to Specification
- Pre-Wired and Shell Only
- Powder Coat Finishes
- 316 or 304 grade Stainless Steel option
- All metal products are made on the premises
- Fast turnaround even on bespoke
- High quality build and finish
- Suitable for all purposes – EV Charging, Power Distribution, Events, Temporary Supply, Sports & Leisure, etc

Quality products made in Somerset. Order from stock for next day delivery* - Made to order sizes/specification and Bespoke from 2 weeks. Call our friendly, knowledgeable Sales Team to discuss your next project on the number below.

*next day delivery is dependant on location, courier service available and time of order.



Tel: (+44) 0333 666 2122
www.fisherandcompany.co.uk
info@fisherandcompany.co.uk

Hospital MRI Supply Pillar



Glazed Doors



Bright Ideas Development: Consultancy for Housing Developments

Established in 2017 by Martin Hawthorne and Ray Priest, North-East based Bright Ideas Consultancy & Development has two main strings to its bow. Firstly, the company offers consultancy advice to housing associations, local authorities and developers who are looking to build housing, and secondly, BICD undertakes developments itself and then sells them on.

The team at Bright Ideas is delighted to announce that the first 22 new homes have



been completed and handed over to the client. Comprising 16 houses, 6 x 2 bed apartments, the first



phase is complete and already delighted residents have the keys and are enjoying their new homes.

A further 45 apartments will be ready in May meaning not only will Bright Ideas played its part in helping 61 families but also helped significantly regenerate this part of the historic town of Middlesbrough.

All the homes are heated with low carbon air source heating ensuring that Bright Ideas is playing its part helping the environment too.

For more information, please see below:
T 07714 412689
www.brightideasdevelopment.co.uk




CONSULTANCY FOR HOUSING DEVELOPMENTS



Our consultancy service provides you with expert advice on how to design, develop, build and manage your property. Our collection of industry experts and professionals means you can ensure that you are always in safe hands and receive the best tailored advice.

If you need advice or assistance for any housing development queries, don't hesitate to get in touch.

www.brightideasdevelopment.co.uk
Telephone 07714 412689
Email info@brightideasdevelopment.co.uk



Construction Made Easy

THE COMPLETE PROJECT MANAGEMENT SOFTWARE

90% OF THE PROCESS AUTOMATED

DESIGN

FINANCE

CONSTRUCTION

HEALTH & SAFETY

CONTRACT ADMINISTRATION

PROGRAMMES

COLOUR CODED GUIDANCE

www.elevate-software.co.uk
01962 761693 | steve@elevate-software.co.uk

Project Management Software

Taking your business to the next level



Construction Made Easy

Elevate is a complete management system, specifically designed to ensure the smooth and professional running of businesses.



Elevate was designed by Steve McGowan, who maintains over 35 years' experience in construction, and duties ranging from Managing Director, Consultant, Troubleshooter, Senior Project Manager and Design Co-ordinator.

Elevate is an innovative, hub of information that enables businesses to use proactive management instead of reactive management. Simplifying management, Elevate has automated as much of the process as possible, increasing the productivity and reducing down time and work load of employees.

This helps to ensure that works are completed correctly and on time, improving performance, quality and providing a stress-free management solution.

Elevate has been designed to be extremely user-friendly and offers the latest features, such as the automatic programme, valuations and cash flow forecasts.

With some many unique, advanced features available, Elevate is able to offer a comprehensive package by linking them together to provide its customers with a full solution.

If you would like to find out more information, please see below:
T 01962 761693
www.elevate-software.com

Sheet Pile Installation

BURNSIDE PLANT HIRE LTD



SHEET PILING - FOUNDATION PILING - MINI PILING - NATIONWIDE SERVICE

Sheet Pile Installation
Cofferdamn Installation
King Post Installation
Mini Piling Installation
Tube Installation
Permenant and Temporary Design Works

0141 374 2895 • 07787 575418 • 0141 647 9331
Email: shirley@burnsideplant.co.uk
Web: www.burnsideplant.co.uk
Glasgow

Leading the way in deep hole drilling

At Industrial Solutions, we take pride in showcasing the very best services provided by companies that provide a wealth of benefits for their industry. As such, in this issue we are proud to announce that we have selected UNISIG as our Deep Hole Drilling Specialists of 2022 and the recipient of our Industry Specialist Award.

Originally founded to provide deep hole drilling machines, accessories and related services to the US market, UNISIG is one of the largest producers of deep hole drilling machines, and

applications, to accommodate any specific requirement.

Since its establishment, UNISIG has built up a trusted reputation amongst its broad range of customers. As the leading producer of gun drilling and deep hole drilling machines, customers of UNISIG rely on its deep hole drilling technologies for the powerful, intuitive capabilities they offer.

Serving industries such as aerospace, energy, firearms, hydraulic cylinders, medical, military and defense, molds, oil and gas, and automotive, UNISIG



an industry leader in technology, innovation, support, and service. From small job shops looking to expand their capabilities, to large OEM's that need to drill millions of holes, UNISIG has the capabilities and the strong understanding of the deep hole drilling process, drilling tools and their

has a strong presence all over the world with installations in the Americas, Europe and Asia.

By offering a complete deep hole drilling solution that includes machines, tools and automation, customers will receive the upmost, highest quality service from engineers that hold extensive experience and expertise on deep hole drilling machines. Throughout the years, UNISIG's impressive drilling capabilities have propelled the company to the forefront of the industry offering a service that goes completely unrivalled amongst competitors. Setting the standards of the industry high when it comes its technological advancements,



UNISIG doesn't just manufacture deep hole drilling machines, it can also develop machines for other deep hole processes such as BTA, gun drilling, counterboring/reaming, pull boring, trepanning, skiving and roller burnishing, bottle boring, bottom forming and many more.



Pushing the limits of BTA drilling, with on and off-centre capabilities that offer intuitive operation, UNISIG manufactures high power BTA drilling machines and trepanning that enable BTA drilling of 25mm to 500mm up to 20m deep.

The B-Series machines handle an impressive range of on-centre BTA drilling and are the ideal solution for a majority of BTA range diameter deep hole drilling applications. This series uses BTA and related tools to produce centreline holes on parts up to 20m deep and are supported with training from UNISIG throughout the process.

The larger swing B-Series machines have virtually limitless capabilities, giving manufacturers the most in power and dimension requirements. As part of the deep hole drilling system, this

range combines rigid deep hole drilling with durable components and powerful drives with smart controls, allowing manufacturers to get the most out of their deep hole drilling investment.

It is evident that UNISIG is at the top of its game, manufacturing some of the highest-quality machines in the deep hole drilling industry. With its team of dedicated experts all pulling together, the company is really showing how anything is possible when you work together to solve problems, not create them.

Please visit us at EMO 2023, Hannover from 18th-23rd September.

For more information, please see below:
T +49 7125 9687590
info@unisig.de
www.unisig.com



See us at



UNISIG.COM



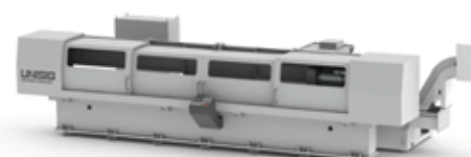
UNISIG

UNISIG TAKES YOUR GUNDRILLING PRODUCTION FURTHER

Gundrilling and BTA deep hole drilling for highly productive shops.

Whether your shop needs on-center or off-center holes, specialized job shop work or fully automated production, UNISIG has a deep hole drilling solution with the accuracy and performance you need.

Take your shop's production further - learn more at UNISIG.COM.



Machines • Tools • Automation

UNISIG machines, engineered and manufactured in the USA

UNISIG

DEEP HOLE DRILLING SYSTEMS



Paperless defect reporting
and fleet maintenance
all for £1 per vehicle, per week



Driver's app
for easy checks



Fleet portal
for full reporting



GPS tags
for locations



DVSA-compliant
for efficiency

Ask us about our new **License Check** service



watch our video

Try free for 30 days
checkedsafe.com



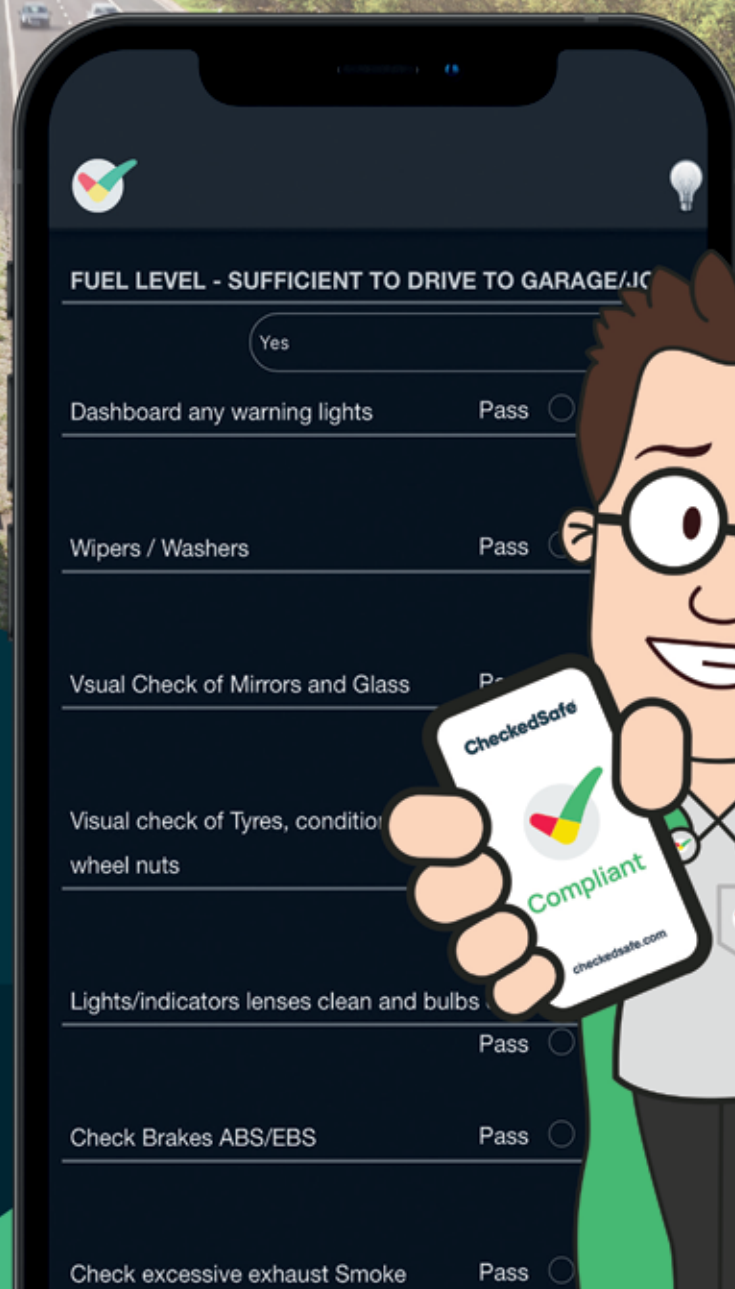
Fleet Innovation
of the Year 2022



Innovative Business
of the Year 2022



Transport Supplier
of the Year 2019



Make your project possible

DCON Safety Consultants Limited offers leading health and safety consultancy and construction statute advice services. The company prioritises and specialises in the highest levels of informed and intelligent advice, senior project resource allocation and compliance assurance. Informed by industry expertise, DCON Safety Consultants Limited knows that every project has potential risks, no matter what its potential benefits, so its team of highly experienced construction professionals helps to ensure clients' statutory conformity.

Upon gaining understanding of the specific needs, goals

and desires of each client and their project, DCON Safety Consultants Limited is dedicated to implementing a design and construction management plan that will meet or exceed these requirements. And, DCON Safety Consultants Limited ensures that there is honesty, integrity, trust and professionalism underpinning every project. Moreover, the company's services are centred on three delivery principles:

■ **Maximising Quality:** The company implements proven health, safety and wellbeing strategies to help clients achieve high quality and cost-effective work commensurate with the design of their projects.

■ **Minimising Risk:** The company effectively manages design and delivery risk on projects to match each client's desired risk level profile.

■ **Managing Compliance:** The company relies on its extensive background working on a wide variety of projects to assist clients in developing, monitoring and maintaining compliance performance.

This excellent service would not be possible without the leadership of Diarmuid Condon, a construction industry leader who brings unique perspectives to encourage, support and mentor the abilities of his colleagues. As a

construction professional with a surveying background and experience spanning two decades, Diarmuid is emblematic of DCON Safety Consultants Limited's commitment to providing outstanding services to clients.

Diarmuid has contributed his invaluable expertise to over 400 projects over 20 years, with a client list including public sector departments, corporate owners, real estate developers, main contractors, design professionals and infrastructural bodies. With this incredible portfolio, Diarmuid is helping DCON Safety Consultants Limited to become a leader in health and safety consultancy across the construction industry.

Key to DCON Safety Consultants Limited's services is working as a Project Supervisor for the Design Process and CDM Advisor in various sectors across the Irish construction market. No project is too simple or too complex for the company's construction safety consultants, all of whom are construction professionals with an average of 20 years' experience in the built environment. The ability to maximise this knowledge and skillset means DCON Safety Consultants Limited can generate distinctive and innovative ideas from traditional PSDP service inputs and outputs.

Additionally, DCON Safety Consultants Limited offers planning compliance assurance services. The ability to strategically support a positive planning decision is exclusive to the company. Its Draft Construction Management Plans (DCMP) inform the overall planning, coordination and control of a project from the beginning of construction to completion. The DCMP also safeguards the obligation placed upon a client to produce a safe, functional and financially viable project.

DCON Safety Consultants Limited also provides its main contractor clients with intelligent, practical, and reasonable physical site safety advice to support compliance and good practice adherence. Behavioural safety outcomes inform how the company approaches each solution with the contractor and their supply chain, identifying opportunities for improvement.

To complement this, DCON Safety Consultants Limited can also help with clients' health and safety strategy. Its holistic and integrated approach can help unlock substantial benefits for clients by providing a structured, objective and SMART framework for full optimisation through the creation of an environment that embraces health, safety and wellbeing.

This means DCON Safety Consultants Limited helps clients to improve their health, safety and environmental performance; enhance staff satisfaction thanks to improved performance; improve risk management and corporate governance with a clear audit trail; gain confidence from long-term planning, better sustainability and performance; and improve overall corporate reputation, including greater staff satisfaction and a more efficient procurement and supply chain.

Finally, DCON Safety Consultants Limited can offer a safety expert witness service, which is headed by Diarmuid himself. He has extensively supported safety-related matters, and is a certified and competent safety professional who will work with clients to identify exactly what kind of safety expert is needed. Then, he will use an extensive network of contacts to recruit the right person to protect clients' interests.

DCON Safety Consultants Limited's fantastic service offering and proven track record of offering leading health and safety consultancy services makes the company a worthy winner of our Commitment to Excellence award. Such achievements are proof that DCON Safety Consultants Limited is well-placed to help ensure your safety, health and wellbeing and make your project possible.

If you are interested in finding out more information on DCON Safety Consultants Limited's full range of excellent services, head to the website or get in touch directly using the contact details below.

Contact
T +353 (0)1 611 1556
diarmuid.condon@dconsafety.com
www.dconsafety.com



Leaders in Built Environmental Safety and Health and Wellbeing Consultancy

Consulting on various aspects of project design, constructability and operational lifecycle matters for local and global commercial clients.

CONTACT US:

DCON Safety Consultants
Suite 5, Fitzwilliam Square East, Dublin 2
Email info@dconsafety.com
Phone +353 (0)1 611 1556

www.dconsafety.com



Vandecasteele Houtimport are one of the leading European timber importers and have ambitious aims to trade only in certified timber by 2025

The Belgian fifth-generation family company, founded in 1883, Vandecasteele Houtimport specialises in the import, trading and export of tropical hardwood from Africa, Southeast Asia and South America, Scandinavian and North-American softwood, North American and European hardwood.

Sustainability and reliability are an essential part of Vandecasteele Houtimport's DNA. With over 140 years of experience, the company is determined to achieve the goal of trading only certified timber by 2025. The challenge lies with the hardwood and especially the tropical hardwoods. Today they are at 80% certified and have a clear vision: only certified timber has a future.

A long-term goal that can only be achieved by including all partners. Substantial investments have been made over the years to be able to realise this future goal. You cannot achieve this goal overnight. This is a long-term job in which all partners must be included. If we want to assure our customers that we keep our promise to only trade timber that comes from well-managed, certified forests, we need to be sure that all our trading partners share the same strictest certification and sustainability processes as we do.

Vandecasteele Houtimport has a unique business model. Importing timber from all over the world, keeping in stock for several years, in some cases, even decades. Stock is our strength and our specialty. In times where supply is difficult or tight, we can count on our invested stocks to guarantee continued supply.

In order to achieve our goal we have taken several actions within the company. First, we were assisted by external experts to get the procedures and protocols in place. Secondly, the team at Vandecasteele was reinforced with two forest engineers in Brazil. That way we can keep a finger on the pulse of every shipment and we are able to accurately apply the ever-changing legislation in Brazil with great precision. This sends an important signal to our suppliers. They know that doing business with Vandecasteele Houtimport means complying with a procedure that is continuously refined and adapted. All timber transport requires our approval. When in doubt the timber is not accepted.

Masters in diversification
Vandecasteele has a long-term commitment to preserving the forests. The family business imports more than 130 different species of timber coming from 40 countries and has over 120,000 cubic meters in stock, mainly certified hard and softwoods. We support the LKTS program of FSC® Denmark with which we want to help promote the use of lesser known species. We keep these lesser-known species in stock and offer them as alternatives. Timber is too often prescribed from a specific well-known species. From the point of view of responsible forest management, we must dare to choose the right durability class for an application instead of a specific timber species.

Rethink everything: a positive evolution in consumer purchasing behaviour
Customers are increasingly asking questions about certification and the origin of the timber. Buyers are becoming more and more aware of the need to use certified timber. Importing tropical wood goes further than just asking for timber. There is a continuous evolution, because of new insights and new legislation.

We work together with external experts, we are broadening our internal knowledge and we continually make progress. Making progress is an ongoing process. Considerable steps have already been taken with the EU Timber Regulation but we can and should do better. We want to see and monitor a stronger application and support for certified timber. Vandecasteele communicates continuously with the users via its website and campaigns in order to spread that message. This is necessary because the purchase of FSC® certified wood contributes to 14 of the 17 United Nations Sustainable Development Goals (SDGs). The purchase of FSC® certified timber contributes to biodiversity.



Since the year 2000, Vandecasteele Houtimport has committed itself through the Corporate Durability Charter by signing up to environmental objectives exceeding the applicable legislation. In 2018, the charter started a partnership with CIFAL Flanders, the local HUB of

UNITAR, the Training and Education Centre of the UN. In 2020, Vandecasteele Houtimport was the first timber company in the world to obtain the international recognised 'SDG Pioneer certificate' from UNITAR CIFAL. In 2022, we were the first timber company in the world to

have achieved the 'SDG Champion award.'

Contact
T +32 56 43 33 00
www.vandecasteele.be

RE:
THINK
WOOD

Nature's
first choice

View and
order stock
on MY VDC

Prompt
delivery

2025 – our aim is to
trade in Certified
timber only from
2025 onwards

VANDECASTEELE
HOUTIMPORT

Contact
Bergstraat 25
8511 Aalbeke
Belgium
vandecasteele.be

genevieve@vandecasteele.be
+32 56 43 33 00
dave@vandecasteele.be
+44 15 94 83 43 32

Quality, bespoke joinery since 1991

Joinery experts, Bluerun Ltd, was originally established by the current Managing Director, John Jones, and Peter Clayden back in 1991. Peter Clayden resigned a few years later and the company is now owned by John's family – his wife Doreen, son Jeremy, and daughter Dee Newman, and Dee took over the reins in December 2019, when John semi-retired.

Based in Wimbish, near Saffron Walden in Essex, Bluerun manufactures quality, bespoke joinery items, and everything is made to order, nothing is 'off the shelf.' Dee commented, "We manufacture items for the commercial market from door and window packers,



to shopfronts, reception desks, mainframes, pub doors, and years ago we even made a trebuchet for Stansted Mountfitchet castle!"

In the 7,000 sq. ft. factory, Bluerun can produce work using both hard or softwoods, and veneered and painted panels. It has a modern spray paint and lacquer facility, enabling products to leave the factory in a fully finished state.

For domestic clients, Bluerun manufactures everything from windowboards to windows, thresholds to doors, shelving, wardrobes, bi-fold doors, French doors,

staircases, indeed most things in a property that are made of timber. It has even made a child's Wendy house and a mansion for cats!

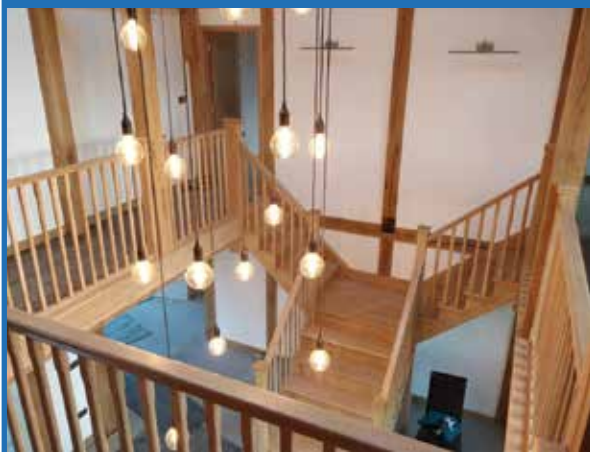
Bluerun will take on projects of almost any size, Dee continued, "The only size limit is whether a finished item can be removed through our workshop doors! Staircases for example, would be made in a kit format, for ease of delivery and installation. We use couriers for deliveries, and they have access to all sizes of vans and lorries." The only thing that is sometimes out of range are installations due to a small workforce, but Dee keeps a list of recommended installers for anything, which is manufactured.



Bluerun Limited

quality bespoke joinery since 1991

QUALITY, CUSTOM MADE JOINERY



In a crowded marketplace, Bluerun works very hard to be at the forefront of the industry. It is a supplier to Dovista for items such as packers and mainframes, and the company corporate branding is on its vans, emails, and social media presence, along with promotional items, and this has helped recognition and growth of the company in recent years.



Dee remarked, "We are still working old school, and everything is designed using pencil and paper with a dash of imagination. We don't use CAD or CNC, and most items are completed using hand tools for the finishing touches. A lot of love and care is included within our work, and this has really helped our customer base to grow."

So whether you are looking for a one-off custom made gate, a staircase, or a production run of doors and windows for a new housing development, or a new interior for your pub, restaurant or office, Bluerun can deliver exactly what you are looking for.

For more information, please see below:
T 01799 599995
dee@bluerunltd.co.uk
www.bluerunltd.co.uk

Bluerun Ltd have been manufacturing top quality, purpose made joinery for the domestic and commercial markets for over 30 years.

Contact us to discuss your requirements.



Please visit our website: **www.bluerunltd.co.uk**
 Tel: **01799 599995** | Email: **dee@bluerunltd.co.uk**
f bluerunltd @ bluerun_joinery

High quality, high capacity mowing systems

In this issue of Building Update, we are pleased to announce that we have selected L S Products BV as the recipient of our Commitment to Excellence Award for its dedication and innovative design of the best mowing systems for the maintenance of large area turfgrass.

As a response to the increasing market demand for an upgrade to the 15-year-old electrically driven rotary mowers, the company started working on a newer, more improved version. Combining his years of experience and expertise, Syb Leijenaar – LS Products BV owner and Eco Clipper® inventor developed a new line of electric mowers that graced the market in 2018, and this was when the Eco Clipper® was born.

Built from experience, the Eco Clipper® Mowing System has evolved from the mowing system that was originally developed in the nineties on the turfgrass farm of the Leijenaar family in the Netherlands. Since the first electric mower product launch in 2002 to the latest Eco Clipper® range, L S Products BV has developed an extensive portfolio of machinery and equipment that has grown rapidly and been revolutionary to the turfgrass industry.

“Eco Clipper® is a range of large area mowers with a high productivity that help field managers to minimise their mowing costs, while producing a professional cut. Our mowers are electrically driven and use a special mowing deck design with small mowing blades. The mowing decks have good contour following capabilities and disperse clippings well, even in wet grass. This means we have a few important advantages over other mowers. These include delivering the highest mowing speed possible thus producing a higher productivity, they are quieter and more fuel efficient because of the small blades and electric drive, and they are more versatile to schedule because they can deal with wet grass and any other adverse weather conditions,” said Syb.



The Eco Clipper® Mowing System offers many advantages over traditional cylinder and rotary mowers. Because it consists of an independently suspended 106cm wide deck section, it is cleverly linked together in larger, flexible contour following mowing decks. The entire design and development of the Eco Clipper® Mowing System delivers a clean cut, even clippings dispersion and excellent following of the ground contours with minimal soil compaction.

The system also caters for bespoke requirements so customers can attach the decks to different frames, whether it be Carried or Towed. Offering three options, the Front Mower consists of a single deck with 2-6 sections, a Towed Mower consists of three separate decks of 10-14 sections wide, and a Carried Rear Mower is combined with a Front Mower and consists of 10-14 sections wide.

We asked Syb if he were to describe the company in three words what would he choose and why, and he answered, “Innovative, we believe that it is always possible to improve. Secondly, our serving. What we offer our customers is ultimately a solution to the problems they are facing. Our products are designed to help our customers to do their job better. And thirdly, we are agile. Every member of our team has the ability to act fast and adapt to the ever-changing



industry. We are also quick to react to any problems our customers may be facing and work hard to do what needs to be done to help them.”

One particular product to note is the Eco Clipper FM4 Sport for sporting grounds.

Similar to the entire Eco Clipper® Mowing Range, the goal with the Eco Clipper FM4 Sport was to maintain the cutting performance of a properly tuned cylinder mower, but without the high maintenance required for mowing conditions such as wet grass and weeds.

The smooth cutting decks with fast rotating small blades ensure a high quality of cut and a good distribution of the clippings. The clippings are also well spread in wet grass, which makes it possible to schedule the mower almost independently to all weather conditions.

Due to the electrically driven blades, the mower is very economical and quiet. The large wheels and clever deck linking system ensure good contour following and enable high mowing speeds.

Municipalities, sports field and park managers have taken delight in the advantages that the Eco Clipper FM4 Sport brings. The EC-FM4 Sport is a 4.11m

wide mower that has four independent cutting decks. The forward position provides excellent visibility and comfort for the tractor operator.

Previous users have reported high productivity gains, a factor two compared to 5-gang self-propelled cylinder mowers, and showed a large appreciation to the low maintenance and the mowers ability to schedule the mowing even under less favourable mowing conditions such as early morning dew and wet autumns.

“We started our focus on increasing mowing productivity in turfgrass production. With a few adjustments, this mowing system has proven to be a major step forward in reducing mowing costs on sports fields and large recreational grass areas. Some users have cut their mowing costs by more than half since using it!” stated Syb.

Going forward, L S Products BV is looking to continue its successful start in the sports field market in the Netherlands and is keen to now debut this line of products here in the UK to British sports field managers so they can also enjoy the benefits of the Eco Clipper® Mowing System.

With the development of a robotic mower for turfgrass production in the pipeline, L S Products BV has a busy yet exciting few years ahead. In closing, we asked Syb what a commitment to excellence means to the company, “We feel we achieve excellence because we are completely committed to offering the best mowing system for maintaining large area turfgrass which is of course, achieved by our Eco Clipper® Mowing System.”

For more information, please see below:
T +31 6 46 75 35 60
info@ecoclipper.com
www.ecoclipper.com

‘Dedicated to offer the best mowing system for maintaining large area turfgrass’







Eco Clipper FM4 Sport
for sporting grounds
www.ecoclipper.com



Manosun set to launch eco-friendly glove range

Since the company was established in 2020, its mission has been to bring change to the end-user experience in selecting and buying industrial gloves, gauntlets and sleeves (PPE). As the designer and manufacturer of such an innovative range of quality industrial hand protection that is available for all industrial applications, Manosun is breaking the mould of traditional offerings with a core

range of hand protection that are safe and the perfect fit for anyone that requires PPE.

"Manosun is a provider of Industrial Hand Protection (Gloves), and we work with all end-users including globally known brands such as Nissan, JDR Cables, and SUEZ. As part of our service, we also survey the work

environment, advise on the correct level of hand protection needed or if needed, we can even develop a brand-new product to the exact requirements of the customer. Manosun have the ability to work on small MOQ's from our sponsor factory in China and the ability to develop new products for an ever-changing work environment offering products where 'not all solutions are off the shelf.'



From ARC, Impact, FR, CUT and General handling applications, our products are the ideal solution for the building industry," stated Steven Patterson, Owner.

Of course, it's not just its versatile application that makes Manosun's products stand out. Their long-lasting durability is down to the high-quality materials that are used for all its products. Every product offers extra flexibility and dexterity that ensures minimal hand fatigue, and because of its 360° breathe technology, all products have the ability to keep hands cool while working.

Soon to launch in 2023 is the Manosun Basic Range. The range is a fantastic response to the current climate delivering a highly sustainable and eco-friendly profile as all products are made of a more sustainable yarn using recycled materials such as industrial polyester, where 36% of the ingredient derives from plastic bottles. Steven commented, "This economic yet high-quality range of Eco products are targeted towards high volume users like the construction industry and smaller white van industry and tradesmen. The range will include several lightweight general handling styles with alternative Grip Palms, a heavyweight latex grip palm glove, and two mid-range cut gloves aimed to target almost all aspects of trades undertaken with construction First-Fix to Finish."

'Good Quality, Low Cost, Sustainable Material' is what Manosun is known for across all its products. Product samples of its Basic Range were sent to a range of customers within the building industry and feedback has been nothing but positive. "Production samples were received in November 2022 with sales stock arriving at the end of January 2023. The feedback we have already received has been "GREAT!" and we look forward to some healthy growth with the Basic Range this year," added Steven.

Of course, competitors within the building industry do offer similar products but we asked Steven what makes the Basic Range unique, he answered, "My competitors do offer a similar range, however, because I work directly with the factory and they sponsor my business we have agreed to offer a premium, high performance product that is one of the lowest priced available on the market. The Basic Range offers Comfort, Longevity, and Value for Money and Aesthetics which I believe will dominate the current low-price competition."

So far, Manosun's products have been revolutionary across England and with the Basic Range, the hope is that it will increase Manosun's overall brand awareness to further places across the UK. "This has been a personal goal of mine for some time, seeing the glove would make the story have meaning. It goes against all of my manufacturer's current business but they have supported me and this product range and the visuals of it. We have only just passed the two-year stage so are still very fresh. My experience spans for more than 16 years in hand protection and my drive is to simplify the development of more new products (product development at the factory). Traditionally this takes months and can be very expensive but the relationship and support from my factory partner allows Manosun to develop new products much quicker without an unachievable MOQ (minimum order quantity)," said Steven.

Another way to expand its brand presence is by taking part in trade shows. Currently Manosun is committed to the BSIF/HSM Publications Safety Expo in Scotland on the 16th November 2023, as well as some other local popup exhibitions supporting its two new member groups: The North East Automotive Alliance and the Advanced Manufacturing Forum.

Contact Steven Patterson,
T +44 (0)7468 904409
steven.patterson@manosun.co.uk
www.manosun.co.uk



THE FIRST POINT OF PROTECTION

OUR GLOVE RANGE INCLUDES



ARC

Primarily developed for electrical ARC flash protection, our range of gloves offer many other benefits.



IMPACT

Designed to protect the user's hands from injury if their grip was to slip or tools that are being used fail.



CUT

A range of industrial cut resistant gloves that offer comfort to the user and cost effective solutions.



SPECIALITY

Our specialist range of gloves protect the user in various environments including cold and chemical-based.



GENERAL

The general handling glove range has been made from the best quality materials.



BASIC

A quality economy, sustainable range to compete in a market of own-brand price-fighter gloves.

Manosun Hand Protection

A manufacturer and designer of industrial safety products

- Manosun was created during the 2020 global pandemic when industry took an all-time low in productivity.
- Located in South Tyneside, the co-creator of the brand has over 16 years of industrial product development and 15 years within manufacturing including Health & Safety.
- Our aim is to target the huge UK manufacturing sectors as well as power generation and conservation and offer a quality service, product and development ability, not all solutions can be found off the shelf.
- We work with your traditional distribution supply chain so no need to work outside of any contractual obligations, you are free to develop and select your PPE requirements.
- Manosun Ltd is also a member of the BSIF a sign and seal of quality and products that fulfil all UK and EU requirements of test and design.

Talk to Manosun for all of your hand protection needs

Tel: 0191 300 8699

Email: admin@manosun.co.uk

Web: www.manosun.co.uk



www.facebook.com/manosun



www.linkedin.com/manosun

MANOSUN

The new alternatives in power conversion



Power conversion is familiar in most consumer and industrial technologies, which typically use AC adapters to convert to DC and supply the required voltage. However, while the method of conversion allows a heater to operate at a given set temperature, it receives the full voltage when turned on, which can cause damage over time in some cases. Other solutions, such as phase-angle controllers and DC power supplies also have their own setbacks, making power conversion a tough task. In this article, Stan Breitlow, chief system designer at industrial temperature controller manufacturer Watlow, discusses the new alternative in power conversion.

The necessity of power conversion

The goal with a heater is not to attain a given DC current, but to maintain a given temperature, which is done using a switching device that turns the power on and off rapidly. Usually, this kind of switching or cycling is not an issue. But in some cases when heaters are small, have ceramic components, or where control of multiple heaters is needed, it is not ideal to have the device on with full voltage, let alone have it switching between states. For example, this can happen when precise heating is needed in medical devices, or rapid heating is needed to test microchips in the semiconductor industry.

The issue becomes worse when constructing devices for an international market. Heaters often have very specific voltage requirements, but the power sources can vary from country to country. In today's global economy, there is a great need to normalise this power for use with heaters built for the voltage requirements of any country. In short, power conversion is an old idea, but current technologies in the market are not well suited for some applications.

The problem with power conversion

Power conversion is essential for any heater, whether in an in-home medical device or a large-scale industrial process. But as heaters become smaller and more intricate, more attention must be paid to their power supply. It's important to be mindful that there are four types of cases where inadequate power conversion can lead to problems.

Firstly, fragile heaters become easily damaged. Switching a higher-voltage power source on and off creates wear and tear on devices. As this happens, smaller, more fragile heaters are more likely to fail over time.

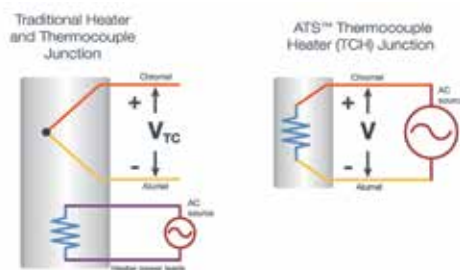
Popular ceramic heaters are often made with molybdenum, which expands and contracts at the same rate as the ceramic. But molybdenum changes resistance with temperature, which means hitting a ceramic-molybdenum heater with a high voltage when it is cold can cause the device to crack or burst – which can become an expensive problem for manufacturers.

New power conversion technology

Power conversion is commonly achieved through phase-angle controllers, transformers and power supplies. But as we have seen, these solutions can either damage heaters, or take up large amounts of space or make it incredibly hard to measure and control the power flow. Watlow's power conversion technology solves these issues by providing the ability to bring voltage up or down smoothly without having to introduce a bulky power supply. Watlow temperature controllers, such as POWERGLIDE®, are capable of modulating the amplitude of the output voltage, allowing the voltage to step down from 208 volts to as low as 20 volts.

Lowering the voltage in this way is a great way to drive low-impedance heaters. It can reduce the power distribution rating with smaller fuses and wires, which saves money and space.

Power conversion is an essential element of many heating applications. Yet most current power conversion technology is not well suited to cases where heaters are fragile, have



ceramic components, or have to ensure safe operation across the globe. No longer do devices have to be engineered around power quality issues. Instead, smooth, stable power changes are possible across a huge variety of outputs, and noise is reduced drastically.

For further information, please contact Johann Lainer, T +43 6244 201290 jlainer@watlow.com www.watlow.com



Stan Breitlow, Chief Systems Designer at Watlow

Intuitive Temperature Controller Enhances the User Experience

- Intuitive menu flow
- Bluetooth® connectivity with EZ-LINK™ mobile app for remote access capability
- Load exactly the right settings every time
- Supply updated settings to customers quickly and accurately
- Access settings in hard to reach controllers

Powered by Possibility

Contact your local Watlow representative or visit www.watlow.com to find out more

Wastewater & Drainage

H.D. Services Ltd: Sewage Treatment and Water Boreholes

Founded in 1984, H.D. Services Ltd. aim to provide the highest quality percussion drilled boreholes, sewage treatment systems and Open-Loop ground source heat pump installations in the Southeast. Feasibility of any project can generally be confirmed upon receipt of a site postcode.

We offer a one stop shop for self-builders, developers, contractors, consultants and architects, providing waste and drainage solutions, independent water supplies and renewable heating options – all specifically tailored to meet individual needs and suited to the geology of the Southeast.

Sewage Treatment, Boreholes and Soakaways

We have been involved in the design, supply and installation of sewage treatment systems for over 30 years. We can either provide package solutions or we can design bespoke systems to meet individual client needs.

Projects undertaken throughout the southeast range from small solutions for single households to larger scale solutions for estates, business parks, farms, schools, caravan sites, hotels and public houses.



We offer a support service for consent to discharge applications to the Environment Agency – a requirement when installing sewage treatment systems.

Ground Source Heat Pumps

We are award winning installers of Open-Loop GSHP installations. These systems utilise ground water as a heat source. Groundwater is pumped from a water supply borehole directly to the heat pump where temperature is extracted.

For more information, please visit: www.hdservicesltd.co.uk

With over 30 years experience, we offer bespoke solutions for the domestic market across the South East. Feasibility of a project can usually be determined with a site postcode.

AWARD WINNING RENEWABLE HEAT INSTALLATIONS

Open-Loop Ground Source Heat Pumps could meet all hot water and heating needs by utilising ground water as a heat source. Ideal for installation in new or self-builds.



enquiries@thehdgroup.co.uk | 01494 792000 | www.hdservicesltd.co.uk

SEWAGE TREATMENT SYSTEMS

We can provide package plant or bespoke systems. All systems are designed to meet the needs of individual clients and comply with strict discharge legislation. Servicing contracts are offered on all installations.



WATER SUPPLY & SOAKAWAY BOREHOLES & DRAINAGE SOLUTIONS

Independent water supply for irrigation or consumption* Soakaway drainage fields and other drainage solutions

*subject to analysis and suitable filtration.

The seriously multi-purpose GRP Roofing System

Established in 2012, Tuff Waterproofing Ltd is the UK's premium designer, manufacturer and supplier of heavy-duty GRP waterproof flat roofing systems. TuffStuff® has a dedicated product development team that work closely with customers and its own UK based manufacturing facility to produce an evolving product range that is suitable for multiple flat roof applications.

From its base in Sherburn in Elmet, North Yorkshire, TuffStuff® is the UK's premier GRP flat roofing system and supplies its products through a dedicated stockist network throughout the country.



The advanced TuffStuff® formula uses the latest liquid polyester resins, glass fibre mat reinforcement and flexible trims, to create a fully integrated waterproof, seamless attractive finish with a 25-year guarantee on materials.

Tuff Waterproofing has further expanded its TuffStuff® product range and is now offering its latest GRP roofing innovation; TuffStuff® flexible GRP. This is a single resin solution that provides an exceptional combination of versatility and durability. It is extremely quick to lay and does not require stripping or re-decking of the roof, saving customers both time and money. It can be applied to a

variety of surface types and structures including vertical sections.

Managing Director, Greg Gimenez commented, "Standard GRP is rigid when it is cured, and it is specifically designed for flat roofs. However it can only be applied to OSB3 (Timber), and while this has been very successful, contractors have been looking for overlay systems which can go over other substrates." TuffStuff Flexible GRP can go onto many substrates including felt, asphalt, single-ply, GRP, concrete, timber and metal. While other companies have standard GRP, TuffStuff® knows that this flexible GRP provides an exceptional combination of versatility and durability. TuffStuff®

Air Quality

ACCON UK
ENVIRONMENTAL CONSULTANTS



We are one of the UK's leading niche environmental consultancies, specialising in air quality, noise, vibration, lighting, flood risk assessment, contaminated land, daylight & sunlight assessment and Environmental Impact Assessment (EIA). Our standards of EIAs, technical reports and planning proposals ensure you get the most robust and reliable results. ACCON UK's wealth of experience and efficiency enables us to produce cost-effective air quality, noise and EIA reports for our clients. We maintain a wide range of noise, vibration and air pollutant measurement equipment to ensure the very best outcomes for our clients.

We offer focussed solutions for all our clients provided by our team of experts, all of whom are specialist environmental assessment consultants and are up-to-date with the most relevant and latest revisions to the planning system.

Contact ACCON UK today to discuss your individual requirements with one of our consultants.

Our range of sector expertise includes:

- Major Infrastructure Projects
- Transportation – Road, Air and Rail
- Residential and Commercial Development
- Sports Stadia and Recreational Facilities
- Industrial
- Energy and Wind Farm Developments
- Mining and Quarrying
- Petro-Chemical



Tel: +44 (0)118 971 0000
enquiry@accon-uk.com
www.accon-uk.com



flexible GRP has become a very important product already, for a number of reasons. It is a one-pot system, whereas standard GRP comes with a base coat as well as a top coat, and this saves a contractor plenty of time and, comes with a 20 year product guarantee on the full system.

However, the major advantage is that while it is curing, it is actually showerproof, and Greg commented, "If contractors experience a rogue shower while installing, they may have to go off-site, but upon returning they can carry on knowing that their work is not ruined (showerproof whilst curing), as it would be with standard GRP. This aspect of our product will really excite contractors that work with GRP regularly." This plus the fact that it is crack resistant, with no weak points has meant that facility companies have also begun using the flexible GRP for patch repairs too.



TuffStuff® Flexible GRP will form a highly flexible, extra tough and seamless waterproof membrane – an ideal solution for areas of heavy-duty foot traffic.

Tuff Waterproofing Ltd will be exhibiting at the UK Construction Week in October in Birmingham, during which clients can find out more about this amazing new product.

For more information, please see below:
T 01977 680250
info@tuffwaterproofing.co.uk
www.tuffstuff.co.uk



Unrivalled professional expertise: Wakefield's expert-chartered surveyor



Fennell Green & Bates is a chartered mineral, waste, energy and building surveyors practice, with a specialism in project co-ordination and management in the construction and mining industries.

The company had evolved substantially since its inception in 1875 when founders Mr Fennell and Mr Green, took over the practice from the eminent mining engineer: Mr J Tolson White.

Under the expert direction of the current director, the company has expanded exponentially, employing experienced staff with chartered surveying expertise. From its convenient central base the UK in Wakefield, West Yorkshire, customers can be reached easily



within three hours, excluding the southern counties of Devon and Cornwall, which takes a little longer.

As leading specialists in construction project co-ordination and management, the company's range of services includes: building surveys, land condition surveys, coal and other mining reports, contaminated land audits, land and mine surveying, geotechnical advice and site investigation.

To allow for a more streamlined process, the company has recently embraced the digital era, by moving its substantial archive, documentation and filing systems to a more secure online storage. This has already provided a more efficient service for its large customer base of: self-build, SME home builders and commercial developers, farmers and landowners.

"Experience in all types of land and former use with a large archive of material to research, helps inform modern solutions to ground conditions problems," says company Partner, John Carlon and keeps Fennell Green & Bates ahead of the competition.

"Our experienced staff are familiar with mining law, land law and regulation and redeveloping land. Experience in subsidence identification from mining and treating the effect, is highly valued by our customers," elaborates John.



It is this winning combination of experienced staff, with knowledgeable areas of expertise, with access to extensive archived documents and drawings, that has cemented the company as a leading specialised chartered surveyor.

Enlisting the guidance of an experienced chartered surveyor, like Fennell Green & Bates, at the early stages of land development or building property can mitigate against further challenges. Drawbacks could include: mining induced ground conditions, contamination and the boundaries of the site, but through informative advice, customers can make detailed, informed decisions.

It is these important, expert risk assessments that can determine whether land use can be developed further to what the client chooses.

"We can advise on developments in former coal mining areas and solutions to stabilise land from any mining or industrial use. Our coal mining risk assessments can be included with future planning



applications in areas of high risk as identified on the Coal Authority data base.

We offer competitive, cost-effective solutions to most land condition problems. Our latest services include: level 3 structural surveys, contaminated land reviews and valuation."

From its Wakefield base, this experienced chartered surveyor practice has helped a large diverse customer base across the UK and according to John, is wholly focussed on helping companies, especially smaller ones to succeed, "The plan for the future is to grow the practice and help the smaller developer to find cost-effective solutions to ground conditions and contamination."

For further information, please see the details below:
T 01924 255666
M 07483 164372
fennellgreenandbates@gmail.com
www.charteredsurveyorswakefield.co.uk



FLEXIBLE GRP

Providing an exceptional combination of versatility and durability. Quick to lay, with no need to strip or re-deck a roof, this fast-curing system saves time and money.

It's a single-resin solution which can be applied to a multitude of surface types and structures including vertical sections.

With two coats applied within one hour, TuffStuff® Flexible GRP will form a highly flexible, extra tough and seamless waterproof membrane - can be a solution for areas of heavy duty foot traffic.

TUFF STUFF
FLEXIBLE
GRP



www.tuffstuff.co.uk

T 01977 680250
orders@tuffwaterproofing.co.uk

Bespoke fabrication no matter the scope

GLOW Engineering and Construction are one of the UK's leading providers of general fabrication services. First set up back in 1992, the company has acquired decades of experience in delivering only the best and most durable materials for a number of different sectors.

Some of the vast client base includes architects, structural engineers, business and private customers, and much more. The company specialises in custom build objects made of metal and has become renowned

within the industry for their dedication to customer service, able to provide a bespoke product that is quality lead. They prioritise customer's individual requirements and even offer design help for their projects if needed.

Some of their services cover Fabrication, Shot Blasting, Powder Coating, Soda Blasting, Steel Frameworks, Interclamp Handrail parts and more. They are well experienced in designing, manufacturing and installing bespoke made fabrications

and they are able to design things using whatever the client has to work with- even if it's nothing but a vision.

Whether the design team put it together from scratch or work from blueprints or specifications, they are able to make a 3D design of the final product to show the client before work gets started creating it.

Contact
T +44 (0)1945 464637
www.glowengineering.co.uk



GLW Engineering & Construction Ltd



EXPERTS IN STEEL FABRICATION

GLW Engineering has many years of experience in the design, manufacture and installation of their fabrications. All our staff are experts in their field, trained to the highest standards offering a friendly, efficient and professional service, each and every time.

We specialise in custom build objects in metal, built to a very high standard in our modern workshop. We use 3D CAD design facilities and employ experts in all areas of our work.

We are a customer focused business that offers flexibility, timely completion of work and the ability to create almost anything our clients want at competitive prices.

Fabrication

Steel Framework

Soda Blasting

Powder Coating

Shot Blasting

Interclamp

www.glowengineering.co.uk

01945 464637 | info@glwengineering.co.uk

Events

Unique Woodland for any corporate event in an AONB

Nestled in the idyllic East Devonian countryside is Boveys Down Farm, a quiet and rural retreat offering Woodland Weddings, glamping (March – September) and year-round camping.

Boasting stunning views of the Farway Valley in an AONB, Boveys Down Farm is situated a few miles from the Jurassic coast, and no more than 15 minutes away from beaches, pubs, shops and restaurants, making it secluded yet conveniently close to everything you could need for a camping break.

Five years ago, the farm became a fully licensed venue for weddings and civil ceremonies. We had the pleasure of speaking to Pam about what makes Boveys Down Farm the perfect venue for your special day.

Indeed, the Woodland Pavilion used for the ceremonies is situated in a small area of woodland, close by to the indoor barn and commercial kitchen. Beautifully presented with careful attention to detail, the pavilion blends



perfectly into its surroundings and boasts plenty of room for the ceremony.

What's more, there is the option of booking part of or the entire site for the exclusive use of your wedding party, and Boveys even offers a bridal suit consisting of two luxury glamping tents joined together.

If you would like to find out more information on booking a camping trip at Boveys Down Farm, or hiring it as a beautifully unique wedding venue, head to their website or get in touch using the contact details below.

T 01404 871436
www.boveysdownfarm.co.uk

Events Company of Choice

The first company in the UK to have provided the King and Queen of England with crowd barriers

From Crowd Barriers to Police Met Barriers, Red Herring Event Services Ltd (Red Herring) provide a range of fencing solutions for any local to large scale event or festival. Some previous customers include MSV Donington Park, Leicester City Council, LPH Concerts & Events, Live Nation (Music) UK Ltd, The X Factor, Formula E Operations Ltd and many more. At Building Update, we have chosen to select Red Herring as our Event Company of choice because it is well-known in its field and is trusted as one of the best and most reliable fencing companies in the UK.

Established in December 2006 by Charles Herring who whilst working for a scaffold company during the years of 1985-2006, started doing events for Leicester City Council. He put on his first major event in 1989 for the council and because of this, his outstanding work did not go unnoticed.

Following a redundancy from the scaffold company (21 years' service), Charles was offered to buy the fencing and barriers from the scaffold company to start his own venture. Taking them up on the offer, Charles took it upon himself to start his own business and in 2006 Red Herring Event Services Ltd was born.

The company has focused mainly on fencing and barriers, building a portfolio of products tailored to the customers' requirements that guaranteed the short term, safe, efficient and cost-effective perimeter solutions they required.



The company now stock a number of fencing solutions including Crowd Control Barriers 2.3m, Steel Shield Hoarding 2.1m, Temporary Fencing 3.5m, and Police Met Barriers 1.5m.

Red Herring is based at Charles' home office in Lincolnshire but the company operates all across the UK, "Distance is no object. We provide a full service from the initial quote to the disassembling of the equipment after the event. We have a team of trained experts who will deliver, assemble and disassemble all equipment and are available as the client's single point of contact throughout. We are able to offer a competitive price as our overheads are very minimal and one of the main benefits of our services is that unlike other companies who will need to hire the equipment they loan out, we own all of our equipment so this negates any waiting times and means we can deliver, assemble and disassemble everything



for you in a quick, efficient and safe manner. We are available 7 days a week, the event industry isn't a 9 to 5 job anymore, work long hours and can handle multiple jobs a day," stated Charles.

If you're looking for any fencing and barriers for your large- or small-scale event, please get in touch below for immediate service.

T 07860 950894
charles@redherringeventservices.co.uk
www.redherringeventservices.co.uk



SUPPLYING THE EVENT INDUSTRY

CROWD CONTROL & POLICE MET BARRIERS, TEMPORARY FENCE & HOARDING PANELS

Working in connection with LPH Concerts & Events | Leicester City Council | MSV Donington Park | VW Music | LOROS | Leicester City Football Club

We can also provide a full service of delivery, install, de-rig and collection. Nationwide service available. No job too small.



www.redherringeventservices.co.uk
charles@redherringeventservices.co.uk
01652 640 426 07860 950 894

Living Space Storage

Creating perfect sleep and storage solutions

studio™ next bed™ beta bed™

Wallbed Systems offer an exclusive range of beautiful wall bed hardware designs to furniture manufacturers and retailers, hardware distributors and retailers, hotel and hospitality contractors around the world. This sleeping solution works perfectly in hotel rooms, micro-apartments, small bedrooms, a home office and student accommodation, providing an excellent hybrid living, working, studying and sleeping area, fully maximising the space available.

Wallbed Systems Ltd. is a London-based global business established by Managing Director, Jeremy Waller, who has extensive experience selling mattresses and beds

across Asia, who saw opportunities for sensible designs of reliable, safe and flexible wall beds, which could feature comfortable mattresses. With the latest designs and accessories (such as with the Alpha bed and Studio desk pairing) small or odd shapes rooms are transformed into multi-use spaces with cleverly concealed sleeping areas.

Taking inspiration from the original models, which originated in the USA in the early 20th century, the company has been manufacturing in-house spring balance systems over a 20-year period, allowing for precise tension adjustments and easy lifting, so there is no compromise on comfort or convenience.

All are easy to install and fit full height mattresses up to 300mm, meaning there is no compromise on an excellent night's sleep. The full wall bed design includes the bed counterbalance mechanism (SBLM), bed frame rails, mountings, pivot system, springs and fasteners. The powder-coated parts are ergonomic and durable, offering assured longevity. Even more remarkable is the 'finger-tip' control mechanism with minimal effort to open and close each bed.

The Alpha bed system is the most popular product globally, available in standard and special sizes, vertical and horizontal mounting, with a choice of leg options and even a desk. The lightweight design comes with robust steel bed frames, with strengthened steel stiffeners for a strong platform. Alpha bed frames are available in single, double, queen or king sizes and come with the adjustable SBLM, allowing perfect balance and easy, safe 'finger-tip' operation every time.



Latest designs include the NeXT bed which gives an immediate, ready to use solution with or without cabinet, and which still delivers comfort levels indistinguishable from a conventional bed. All products are stocked at multiple locations globally with advice provided around options and sizes.

For more information on the full product range and cabinet designs:
T +44 (0)208 704 5796
T +44 (0)7780 661958
jeremy.waller@wallbedsystems.co.uk
www.wallbedsystems.co.uk

Building Services

Carlisle's Arboflex PU specified for 4,000m² Galliard Homes Project



Arboflex PU, the wet-on-wet liquid applied waterproofing membrane from Carlisle Construction Materials, has been specified for the roofs and podium deck of Neptune Wharf: a development of six, high specification residential buildings by Galliard Homes in East London.

T & T roofing will install the Arboflex PU, along with tapered, fire-retardant mineral wool insulation, which will also be supplied by Carlisle. All roof areas, apart from the podium, will be green roofs, and the Arboflex PU 20-year system will be installed to provide excellent root resistance, along with ease and speed of installation and effective waterproofing.

T & T Roofing will install the tapered insulation, before applying the Arboflex PU liquid. After rolling the liquid onto the roof, T & T's installers will lay the system's glass fibre matt onto the wet membrane. Once the liquid has been drawn through with the roller and an additional application has been completed, the matt is entirely absorbed, providing a seamless roof surface.

The first phase of the Neptune Wharf roofing project was complete in February 2023, with the complete development due to handover later in the year.

Contact
T 01623 627285
info.uk@ccm-europe.com
https://www.ccm-europe.com/gb



LEADING FOLDAWAY BED SUPPLIERS

- Wide Range
- Highest Quality
- Competitive Prices

Wallbed Systems designs, develops, manufactures, and distributes a wide range of wall bed systems to 27 countries around the world.

Wallbed Systems Ltd.
www.wallbedsystems.co.uk | Jeremy.Waller@wallbedsystems.co.uk
+44 (0)208 704 5796 | +44 (0)7780 66 1958

ARBOFLEX

Liquid Waterproofing you can rely on

One component PU liquid waterproofing

- Fast and easy installation
- Weather-resistant: can be used all year round
- Green roof compatible
- BBA Certified
- Seamless finish, adapts to uneven, curved or irregular surfaces

CARLISLE
CM EUROPE

www.ccm-europe.com



VANDECASTEELE
HOUTIMPORT

Discover our
world of timber

Choose life, Choose wood



Nature's first choice



Ask for your
personal login to
our online portal



Prompt delivery



More than 50
decking species

Photo © Dieter Dejonghe

Endless possibilities for
decking and cladding

Contact

Bergstraat 25
8511 Aalbeke
Belgium
vandecasteele.be

genevieve@vandecasteele.be
+32 56 43 33 00
dave@vandecasteele.be
+44 15 94 83 43 32

Dolwin & Gray

Established 1969



Hedge, Copse & Woodland planting
(Transplants to semi-mature)

Cultivation & Seeding Paddocks etc Turfing

All aspects of Tree Work, Surveys and
Reports to BS5837:2012 Trees in Relation
to Design, Demolition and Construction –
Recommendations

www.dolwinandgray.co.uk

Tel 01892 853232

Email enquiries@dolwinandgray.co.uk

The Home of Le Tonkinois Varnish UK

B & D Murkin are a small family run business based in Maidenhead. Providing varnish and sander products, they are the sole importers of Le Tonkinois Varnish and the Flexidisc Sander.

They have been importing Le Tonkinois Varnish and the Flexidisc sander for almost 40 years.

They demonstrate and sell these products



on various shows throughout the UK and operate a first class mail order service.

Le Tonkinois Varnish is a traditional oil based varnish, manufactured using a 200 year old Chinese recipe. It contains Linseed oil, Tung oil & natural resins. No solvents or water therefore it is environmentally friendly and is a pleasure to work with, no nasty smells and no brush marks.

Le Tonkinois Varnish is 100% waterproof and does not crack or flake off, even on oily woods like Teak and Iroko. It also withstands hot pans and boiling water. It produces a high quality and professional finish and requires very little maintenance, simply add a top up coat every few years as required.

Le Tonkinois Varnish has gained world recognition for its results and is regarded as one of the world's best varnishes for indoor, outdoor and marine use.

The flexidisc sander is an extremely unique piece of equipment, although being a general sander, it can also be converted into many other applications including: finishing sander, bench grinder, general purpose sharpener, partial angle grinder, polish applicator, polisher and grinds glass and nails.

"The Flexidisc sander can be used to prepare any type of material prior to applying Le Tonkinois and results in a better finish than most orbital Sanders in a fraction of the time.

For any more information, please see the details below:
www.letonkinoisvarnish.co.uk



LE TONKINOIS



NATURAL OIL VARNISH

Le Tonkinois is a traditional natural oil based varnish. It is perfect for outdoor, indoor or marine use. With Le Tonkinois varnish the options really are endless.

Combining unrivalled long lasting protection on materials including wood, metal, cork, stone, teak, mdf and grp Le Tonkinois varnish leaves absolutely no brush marks and will restore the beauty and colour of the wood. Flexible enough to move with the timber and able to withstand abrasion and impact, Le Tonkinois varnish is resistant to boiling water, UV, petrol, diesel and sea water. It won't crack, chip or peel off, making it perfect for all outdoor purposes as well as indoor.

www.letonkinoisvarnish.co.uk
01628 548840

Environmentally friendly plastic lumber

At Building Update, we are proud to announce that we have selected Kedel as the recipient of our Commitment to Excellence Award for its ongoing efforts in producing eco-friendly plastic products for a more sustainable future.

Kedel is a family business founded on ethical and ecologically sound principles. Dedicated to making sustainable living attractive, Kedel believe that by incorporating sustainable recycled plastic products into personal and working environments, it can create a happier, healthier and infinitely more sustainable future for generations to come.

Established by three brothers, Kieran, Dermot and Lewis Walch, Kedel is based in Burnley and supplies nationwide. We spoke to Dermot who explained what commitment to excellence means to them and how they feel they achieve it. "Commitment to excellence is an attitude towards work. You're only as good as your weakest link, so we try to give our staff an autonomous responsibility around servicing our customers and through this we are achieving service excellence."



Because of this, people can make quicker decisions and our customers end up 100% satisfied much quicker. Eco-Friendly Plastic is what we do. Not many people believe plastic can be green but it can. We manufacture plastic wood made from waste polystyrene, and are also suppliers of many other types of recycled plastic profiles from other manufacturers, which allows our customers to keep their carbon footprint down. We maintain excellence throughout our business through our sustainable products, sustainable supply chain and sustainable manufacturing policy."

Winners of the Feefo Trusted Service Award, Kedel's range of recycled plastic lumber reflects the future of the construction industry. From plastic fencing pales and edging board pegs to round posts, boards and



planks, tongue & groove planks, decking, and so much more, Kedel's extensive product range comes with a number of benefits. Of course, the largest advantage of plastic lumber in general is that it does not rot, absorb water and is highly resistant to damage. This much more versatile material means it has a life longevity to be placed in all weathers and climates making it a perfect material for use in construction, leisure, education, gardens and any water applications.

Some could claim that plastic wood is bad for the environment, however, Kedel would argue that yes, initially the cost of plastic wood may be higher but the outcome is that you have a product that will last a lifetime due to its extended longevity and zero maintenance properties. To add to this, Kedel only uses recycled plastic that would otherwise go to landfill, therefore, its contribution towards a circular economy is something to be highly commended.

Moving forward, Dermot explained what the future holds for the company. "We are about to increase the working hours of our extrusion plant to be operating 24 hours



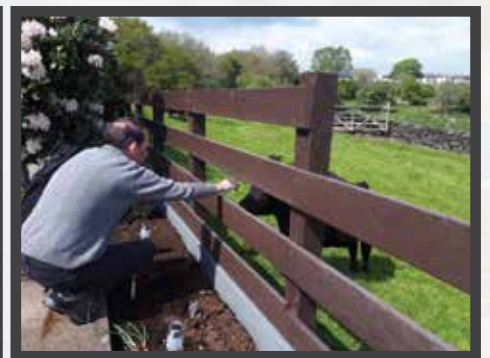
a day 5 days a week which will double our production time, and to support this we are recruiting more extruder operators. In the future, we plan to build a network of resellers around the UK, as the current cost of transport is at an all-time high so we are looking at ways around this for better business practice and to allow for an eco-friendlier way of working."

In closing, we asked Dermot how he felt receiving our award, he responded, "We are thrilled. It shows we are doing all the right things and going in the right direction and we will endeavour to live up to it."

For more information, please see below:
T 01282 861325
www.kedel.co.uk



The Zero Maintenance Alternative to Wood



Recycled Plastic

- 100% recycled and recyclable
- Impervious to fungi, algae, insects
- Never rots, splinters or cracks
- Graffiti resistant
- UV Protected
- Eco-friendly and low carbon
- 100% maintenance free
- Lasts a lifetime



sales@kedel.co.uk | www.kedel.co.uk | 01282 861325

