

BUILDING UPDATE

ISSUE: 663 March | www.solutionspublishing.co.uk

elevateTM
Construction Made Easy

THE COMPLETE PROJECT MANAGEMENT SOFTWARE

90% OF THE PROCESS
AUTOMATED

DESIGN

FINANCE

CONSTRUCTION

HEALTH & SAFETY

CONTRACT ADMINISTRATION

PROGRAMMES

COLOUR CODED GUIDANCE

www.elevate-software.co.uk

01962 761693 | steve@elevate-software.co.uk

Watlow reflects on 2022

2022 has lots to be remembered for, challenges and triumphs. But for electric heating element manufacturer Watlow, it's been highly significant year in the company's journey to date. Here Johann Lainer, Marketing Communications Manager Europe at Watlow, reflects on the company's achievements in 2022.

100 years in the making

Halfway through 2022 marked Watlow's 100 year-anniversary. The company, which was founded in 1922 in Missouri, USA, is now a global electric heating specialist with over 1,000 patents and 4,200 employees working across locations in North America, Asia and Europe.

Watlow began manufacturing electric heating elements for the shoe industry, before widening its product offering in the 1930s to introduce electric immersion heaters to replace steam pipes and fire-hazardous gas. Then, in the 1980s, Watlow expanded its global reach with the opening of sales offices in Italy, France, the UK and Taiwan.

Since its founding in 1922, the company has developed into a highly regarded industrial heating technology manufacturer, holding more than 1,000 patents and employing over 4,000 people working in nine manufacturing facilities and five technology centres across three continents. Additionally, Watlow gains sales coverage in 178 countries and, most recently, opened a facility in Cebu, Philippines in October 2022 to support local customers focusing on energy and environmental technologies.

Eurotherm acquisition

In June 2022, Watlow announced it had signed an agreement to acquire Eurotherm® from Schneider Electric, the global leader in the digital transformation of energy management and automation.

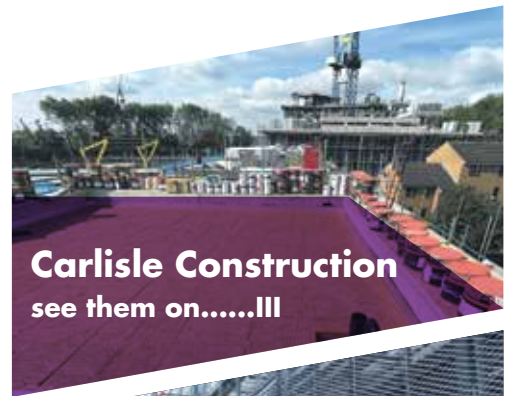


Eurotherm is a premier global provider of temperature, power and process control, measurement and data management equipment, systems, software and services for global industrial markets. The company's headquarters are in Worthing, UK, with core manufacturing operations in Łódź, Poland, and a headcount of about 650 people worldwide.

The acquisition completed in November 2022, with Watlow's CEO, Rob Gilmore saying, "We are excited about Watlow and Eurotherm and all we will accomplish together. This acquisition aligns with our vision of providing innovative thermal products and technologies that help increase our customers' competitive advantage. The combination of Watlow and Eurotherm products and technologies will create new global opportunities for our collective customers and allow us to focus our advanced thermal systems in important areas."

On reflection, 2022 was promising for Watlow, which continues to make waves in the industry demonstrating why electric heating technology is key in reducing emissions. Here's to 2023!

www.watlow.com



Carlisle Construction
see them on.....III



Clarke Construction
see them on.....III



Delta Tower Cranes
see them on.....V



Checked Safe
see them on.....VI



Tuff Waterproofing
see them on.....VIII



Vandercastele
see them on.....X



Service Sealing Solutions
see them on.....XV

WATLOW

PM PLUSTM

Intuitive Temperature Controller Enhances the User Experience

- Intuitive menu flow
- Bluetooth® connectivity with EZ-LINKTM mobile app for remote access capability
- Load exactly the right settings every time
- Supply updated settings to customers quickly and accurately
- Access settings in hard to reach controllers

Powered by Possibility

Improved User Interface



Contact your local Watlow representative or visit www.watlow.com to find out more

Sewage Treatment Systems

H.D. Services Ltd: Sewage Treatment and Water Boreholes

Founded in 1984, H.D. Services Ltd. aim to provide the highest quality percussion drilled boreholes, sewage treatment systems and Open-Loop ground source heat pump installations in the Southeast. Feasibility of any project can generally be confirmed upon receipt of a site postcode.

We offer a one stop shop for self-builders, developers, contractors, consultants and architects, providing waste and drainage

solutions, independent water supplies and renewable heating options – all specifically tailored to meet individual needs and suited to the geology of the Southeast.

Sewage Treatment, Boreholes and Soakaways

We have been involved in the design, supply and installation of sewage treatment systems for over 30 years. We can either provide

package solutions or we can design bespoke systems to meet individual client needs.

Projects undertaken throughout the southeast range from small solutions for single households to larger scale solutions for estates, business parks, farms, schools, caravan sites, hotels and public houses.

We offer a support service for consent to

discharge applications to the Environment Agency – a requirement when installing sewage treatment systems.

Ground Source Heat Pumps

We are award winning installers of Open-Loop GSHP installations. These systems utilise ground water as a heat source. Groundwater is pumped from a water supply borehole directly to the heat pump where temperature is extracted.



For more information, please visit: www.hdservicesltd.co.uk

Sustainable Building Materials

Ecomerchant: Ethical. Healthy. Sustainable



Established in 1998, Ecomerchant is an independent employee-owned business, which has been at the forefront of sustainability for 25 years as a leading supplier of sustainable building materials. Based on the core values of ethical trading, healthy materials and sustainability, Ecomerchant has built up an excellent reputation as a provider of sustainable construction materials, with a large and loyal customer base, Ecomerchant is helping to ensure that we all can build healthier, energy efficient and more environmentally sensitive buildings.



A family house built with naturally insulated passive panels (NIPPs) constructed to passive levels of airtightness and energy efficiency, the complete construction is made using natural and sustainable materials. Image courtesy of Kithurst Builders.

Ecomerchant supplies a vast range of products and materials including insulation, airtightness, sheathing and sarking boards, timber windows & doors, lime and clay plasters and renders, natural paints, renewable energy products, water-saving and off-grid systems, groundwork and landscaping materials and so much more all chosen to help create healthier and more energy efficient homes, schools and workplaces.

Over the past few years, Ecomerchant has seen an increase in the demand for natural alternatives to many building materials, many natural materials outperform their modern synthetic alternatives but without the unwanted environmental consequences. Ecomerchant has developed a range of solutions and products offering higher energy performance and building efficiency with minimal impact on the environment.

All of Ecomerchant's products are chosen for their ability to eliminate, reduce or significantly improve environmental performance, improve building health and reduce running costs.

Visit Ecomerchant's website to see the huge range of products and discover a wealth of information both general and technical to help you decide what is best for you; many products are available to buy online. Ecomerchant's knowledgeable and helpful staff will be happy to price your enquiry, answer technical questions, take orders or provide quotations.

T 01793 847444

sales@ecomerchant.co.uk
www.ecomerchant.co.uk



The COP 26 House co-sponsored by Ecomerchant and built for the Glasgow COP is an all-timber construction with no steel, concrete or plastics used in its construction. Insulation is Steico wood fibre, heating by Herschel infrared panels. The COP26 House beats the RIBA 2030 Challenge carbon target by a substantial 22%

ecomerchant
sustainable building materials
from foundation to ridge

"Creating quality low energy architecture requires a dedicated, knowledgeable team from initial concept right through to finishing touches. Ecomerchant are key part of that team for Charlie Luxton Design. Our values align, creating good buildings that perform and last whilst respecting our environment."

Charlie Luxton
Principal
Charlie Luxton Design

www.ecomerchant.co.uk
email: info@ecomerchant.co.uk
call: 01793 847 444
ETHICAL · HEALTHY · SUSTAINABLE

With over 30 years experience, we offer bespoke solutions for the domestic market across the South East. Feasibility of a project can usually be determined with a site postcode.

COVID-19 SAFE WORKING

AWARD WINNING RENEWABLE HEAT INSTALLATIONS
Open-Loop Ground Source Heat Pumps could meet all hot water and heating needs by utilising ground water as a heat source. Ideal for installation in new or self-builds.

WATER SUPPLY & SOAKAWAY BOREHOLES DRAINAGE SOLUTIONS
Independent water supply for irrigation or consumption*
Soakaway drainage fields and other drainage solutions
*subject to analysis and suitable filtration

SEWAGE TREATMENT SYSTEMS
We can provide package plant or bespoke systems. All systems are designed to meet the needs of individual clients and comply with strict discharge legislation. Servicing contracts are offered on all installations.

HD SERVICES LTD

enquiries@thehdgroup.co.uk | 01494 792000 | www.hdservicesltd.co.uk

Construction Finance



Helping you to find the right funding, right now.

Are YOU looking for Construction finance?

SME funding UK Ltd is a business finance broker. We help our clients find the right funding, right now! We can place most business finance requirements, including:

Asset Finance • Cashflow • Invoice Finance • Loans • Property Finance

We can help with new and/or used:

Equipment • Tankers • Tools • Trucks • Vans • Yellow Plant

We can also help with:

Bridging • Buy to Let • Commercial Mortgages • Property Development

Our clients tell us that we save them both time and money!

We are directly authorised by the FCA (FRN: 772970) and always act ethically to get the best deal for our clients. Please contact us if you would like to discuss what options may be open to you and we can have a free of charge, no obligation chat.

Consult the experts, contact SME funding UK Ltd today.

01223 848 844 | henry@smefunding.uk | www.smefunding.uk

Your loan is at risk if you do not keep up repayments on a mortgage or other loan secured on it. SME funding UK Ltd is a broker, not a lender and can introduce you to a number of finance providers based on your requirements and credit rating. We may receive a commission for such introductions. All finance is subject to application and formal credit approval.



Traditional brick production specialist

The Bulmer Brick and Tile Company, based in Suffolk, is a family-run business established in 1936. With over 80 years' experience in the industry, the English company truly is a master of its craft.

The Bulmer Brick and Tile Company is renowned for its traditional handmade bricks which, fired in a down draught kiln, have a distinctive finish that blends well with the original London clays bricks. The beauty of the Suffolk company's bricks lies in their traditional production method. The bricks are made from

clay dug from the same clay seam used since Tudor times. The wealth of experience amassed by the company coupled with their respect for the process is what separates The Bulmer Brick and Tile Company from the competition.

Having produced bricks for reputable clients such as the National Trust, English Heritage and Historic Royal Palaces, the company is able to lend its services to both private and commercial developments. Its facings and specials can be made with almost any texture; with 150 different sizes of facings

and a range of over 5,000 special shapes, including all standard plinths, squints and copings and extends to purpose made chimney bricks, terracotta, mullions, jambs, floor bricks, pampments, decorative plaques, garden edgings and a full range of rubbing blocks.

Aside from offering a wide range of clay brick solutions, The Bulmer Brick and Tile

Company further offers a select number of additional materials. It is a stockist of Singleton Birch Natural Hydraulic Limes and Lime Putty, available in a range of strengths – NHL2, NHL3.5, and NHL5 – and sold in 25kg bags or 1 tonne bulk bags.

T 01787 269232
www.bulmerbrickandtile.co.uk



Roofing

Waterproofing you can rely on



Carlisle CM Europe (CCM Europe) manufacture high quality EPDM waterproofing membranes for flat roofing, façade systems and building solutions for the construction industry.

CCM Europe is a dynamic company with ease of installation and durable roofing systems including EPDM & Liquid Waterproofing. As a leading manufacturer of waterproofing membranes and sealants, our market leading products are suited for a wide range of flat roof substrates for both new build and refurb.

The market leading advantages of Resitrix® is the unique combination of materials: the synthetic rubber EPDM and polymer-modified bitumen – making it a durable hybrid membrane. Our extremely flexible, single-layer waterproofing membrane can thus be applied on almost all substrates. The membranes are welded together quickly, easily and safely using a hot-air device without any need for naked flames," stated Shail Chauhan, Marketing Manager.

One particular product worth noting is the ARBOFLEX® PU, a single component liquid made from pure polyurethane, which, once cured, forms a seamless elastic membrane without any joints. The material properties of ARBOFLEX® PU enable it to be air tight and waterproof on a range of substrates.

Alongside its high performance and wear-resistant membrane, ARBOFLEX® PU can adapt to any surface: uneven, curved or irregular, and with its fast-curing properties can be walked on in 24 hours. Comprised of one component that can be applied straight out of the tin, it allows for fast and easy installation, is green roof compatible and weather resistant, so it can be used all-year round.

CCM Europe is not only dedicated to offering state of the art EPDM flat roofing seal solutions, but to also extend its expertise and knowledge to other professionals through its dedicated EPDM and PU Liquid system roofing training courses at the CARLISLE® ACADEMY. Designed by professionals for professionals, with a view that knowledge is sustainable material. The more you share it, the more you get back. The training content is intended to enable attendees to learn of the proven advantages of EPDM waterproofing solutions relating to roofs, façades and building in an up-close and hands-on manner. For more information, visit: <https://academy.ccm-europe.com/en>

Allowing for change creates space for continuous growth and a new perspective. We have recently strengthened our sales and distribution network covering the UK and the ROI market. We have also welcomed a few new members to our sales team, Charlie Patrick and Crawford McAllister. Charlie looks after our Eastern region and Crawford looks after the North and Scotland.

With ambitions to continue their impressive growth, CCM Europe plans to keep collating together more opportunities for further development. As a dynamic company that aims to support and motivate its people as much as possible, it is continuing to review and develop new products all the time.

T 01623 627285
info.uk@ccm-europe.com
www.ccm-europe.com

THE BULMER BRICK & TILE COMPANY LTD

The Brickmaker's Tale
by Peter Wilson
Order your copy
here today

Bulmer bricks are made from the finest London Clays, dug from our seams almost continually since Tudor times. All Bulmer bricks are hand made, using traditional methods of making, drying and are fired in a coal burning, down draught kiln. We are a small family business continuing the traditions of brickmaking on this site dating back to the Middle Ages.

We work on large projects for the National Trust, English Heritage and Historic Royal Palaces, but are just as proud of some of the small private work undertaken by individuals.

**The Brickfields, Bulmer, Sudbury,
Suffolk CO10 7EF**
Tel: 01787 269232
Fax: 01787 269040
Email: bbt@bulmerbrickandtile.co.uk

**Waterproofing solutions for
flat roofs, facades and buildings**

For trade, sales and distribution enquiries
Call: 01623 627285
Email: info.uk@ccm-europe.com

www.ccm-europe.com

Steel Construction

CCEL
Clarke Construction Essex Limited

STEEL CONSTRUCTION SPECIALISTS

We pride ourselves on delivering an excellent quality of service to all our customers. Our diverse portfolio proves we achieve high-end results to any project we endeavour, our association with structural engineers – draftsmen & specialist factories enable us to provide such diverse services from designing and construction of steel structures through to design and production of bronze railings, stairs & balustrades. Our site teams are specialists in heavy & contract lifting, rigging & erection of structures. We can offer a full construction service as a one stop.

- Bespoke Designs
- Specialists in Diversity
- Architectural Metalworks
- Complex Architectural Structures
- Creative Works
- Integrated Steel & Timber
- Specialist Lifting
- Temporary Works



Please visit the website: **www.ccel.org.uk**
Tel: 01375 360605 • Email: office@ccel.org.uk

SSIP
SAFETY
SCHEMES IN
PROCUREMENT

CHAS
Accredited Contractor
CHAS.co.uk

Environmentally friendly plastic lumber

At Building Update, we are proud to announce that we have selected Kedel as the recipient of our Commitment to Excellence Award for its ongoing efforts in producing eco-friendly plastic products for a more sustainable future.

Kedel is a family business founded on ethical and ecologically sound principles. Dedicated to making sustainable living attractive, Kedel believe that by incorporating sustainable recycled plastic products into personal and working environments, it can create a happier, healthier and infinitely more sustainable future for generations to come.

Established by three brothers, Kieran, Dermot and Lewis Walch, Kedel is based in Burnley and supplies nationwide. We spoke to Dermot who explained what commitment to excellence means to them and how they feel they achieve it. "Commitment to excellence is an attitude towards work. You're only as good as your weakest link, so we try to give our staff an autonomous responsibility around servicing our customers and through this we are achieving service excellence."



Because of this, people can make quicker decisions and our customers end up 100% satisfied much quicker. Eco-Friendly Plastic is what we do. Not many people believe plastic can be green but it can. We manufacture plastic wood made from waste polystyrene, and are also suppliers of many other types of recycled plastic profiles from other manufacturers, which allows our customers to keep their carbon footprint down. We maintain excellence throughout our business through our sustainable products, sustainable supply chain and sustainable manufacturing policy."

Winners of the Feefo Trusted Service Award, Kedel's range of recycled plastic lumber reflects the future of the construction industry. From plastic fencing pales and edging board pegs to round posts, boards and



planks, tongue & groove planks, decking, and so much more, Kedel's extensive product range comes with a number of benefits. Of course, the largest advantage of plastic lumber in general is that it does not rot, absorb water and is highly resistant to damage. This much more versatile material means it has a life longevity to be placed in all weathers and climates making it a perfect material for use in construction, leisure, education, gardens and any water applications.

Some could claim that plastic wood is bad for the environment, however, Kedel would argue that yes, initially the cost of plastic wood may be higher but the outcome is that you have a product that will last a lifetime due to its extended longevity and zero maintenance properties. To add to this, Kedel only uses recycled plastic that would otherwise go to landfill, therefore, its contribution towards a circular economy is something to be highly commended.

Moving forward, Dermot explained what the future holds for the company. "We are about to increase the working hours of our extrusion plant to be operating 24 hours



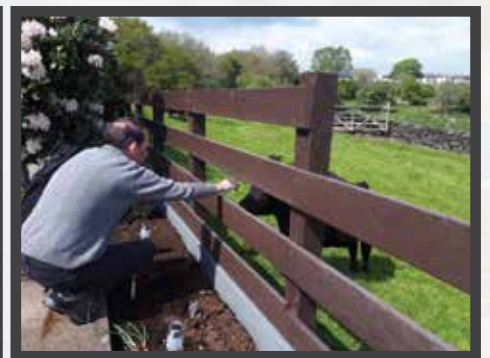
a day 5 days a week which will double our production time, and to support this we are recruiting more extruder operators. In the future, we plan to build a network of resellers around the UK, as the current cost of transport is at an all-time high so we are looking at ways around this for better business practice and to allow for an eco-friendlier way of working."

In closing, we asked Dermot how he felt receiving our award, he responded, "We are thrilled. It shows we are doing all the right things and going in the right direction and we will endeavour to live up to it."

For more information, please see below:
T 01282 861325
www.kedel.co.uk



The Zero Maintenance Alternative to Wood



Recycled Plastic

- 100% recycled and recyclable
- Impervious to fungi, algae, insects
- Never rots, splinters or cracks
- Graffiti resistant
- UV Protected
- Eco-friendly and low carbon
- 100% maintenance free
- Lasts a lifetime



sales@kedel.co.uk | www.kedel.co.uk | 01282 861325



Delta Tower Cranes Ltd specialise in the Hire & Sales of Luffing & Trolley Jib Tower Cranes



Established over 20 years ago by Richard Baldwin of Baldwin Crane Hire, Delta Tower Cranes Ltd is a one stop shop for the Hire, and Sales of Luffing Jib, Trolley Jib, & Pedestrian Operated Tower Cranes.

The companies head office is in Langley near Slough and they have depots in Theale, Reading and Newport in South Wales. From these bases Managing Director and Technical Sales Manager Tony Ferris and the ten staff service all companies requiring its products.

Tony Ferris with his long term experience in the Tower Crane Industry has been directly involved in the establishment of Delta Tower Cranes Ltd with Richard Baldwin from day one, and he commented, "While we are a fairly small company in the industry, we do have a fleet of up to 36 Luffing Jib & Trolley Jib Tower Cranes available for hire. We pride ourselves in providing a personal and flexible service, and I work directly with customers from the day that they contact us to ensure that we supply them with a suitable Tower Cranes and other services at very competitive rates. We are there right throughout the project to talk to and guide customers and field any issues that they may have."



Proof of the commitment the company has to its customers is evident in the investment it has made in a comprehensive fleet of the latest Tower Cranes from leading manufacturers including Saez Cranes, as well as the latest state of the art equipment including Electronic Torque Equipment, AMCS Electronic Zoning/Anti Collision Systems and IKAR Rescue Systems.

Delta Tower Cranes Ltd can supply a complete range of Hydraulic Luffing Jib Tower Cranes, including the innovative Saez SLH series of Flat Top Hydraulic Luffing Jib Tower Cranes which are ideal for sites with restricted air space, as they have vastly superior out of service radius capabilities when compared with conventional wire rope Luffing Jib Tower Cranes. These cranes are the perfect solution for compact construction sites where air space is at a premium, or where they are located next to Network Rail Boundaries. In addition Delta Tower Cranes can supply Saez TLS series Flat Top Trolley Jib Tower Cranes, as well as Pedestrian Operated Tower Cranes.

The company hires its cranes out mainly to construction companies and can provide a complete package if required, including Crane Operators, a comprehensive range of Lifting Accessories, Generators with Bunded Fuel Tanks, and AMCS Electronic



- Jost JTL 208.12
- Raimondi LR60
- Terex Peiner SN86/1
- Terex Comedil CTL140-8
- Saez SL 320
- Saez SLH205
- Jost JL256.16
- Potain MR165-G12

Trolley Jib Cranes include:

- TLS 65 4-8 Ton
- TLS 70-10
- Terex Comedil CTT121
- Terex Comedil CTT181
- Terex Comedil CTT231

Tony concluded, "We would welcome the opportunity of sharing with customers the benefit of our many years of experience in the Tower Crane Hire Industry by offering you technical advice and very competitive quotations for all your Tower Crane requirements."

Contact Tony Ferris,
Technical Sales & Enquiries,
T 01753 542418
M 07799 788150
Technical Sales & Hire Enquiries
deltatowercranes@gmail.com
General Enquiries & Administration
admin@deltatowercranes.com
www.deltatowercranes.com

Zoning and Anti-Collision Systems. Tony continued, "I have been in the Tower Crane industry for over 45 years and myself and our very experienced staff take great pride in delivering an efficient and personal service to all our customers. Most of our work is repeat business in addition to website enquiries. Companies return to us time and again as they know that they are guaranteed personal and excellent service from our staff throughout every step of their project."

Delta Tower Cranes Ltd insists upon safety, reliability, first class service and efficiency and these are its core values and priorities. The highly skilled and experienced personnel are constantly undergoing training which enables the company to ensure that it provides its customers with a professional and 'safety first' service.

Delta Tower Cranes Ltd can also offer to its customers the benefit of its in house Auto CAD Design facilities, as well as arranging road closures, traffic management, and the hire of skips, brick forks, block grabs and other ancillary lifting equipment.

The following is a list of tower cranes in the Delta fleet, all specifications for each crane are available on the website (www.deltatowercranes.com)

Luffing Jib Tower Cranes include:

- Jost JTL 108.6
- Jost JTL 158.6



Complete compliance solutions

Since 2014, CheckedSafe has provided simple and inexpensive tailored compliance solutions. Established by Gary Hawthorne and Darran Harris, CheckedSafe is a SaaS platform compliance provider providing several apps and a web-based reporting system that is multi-functional and secure.

The CheckedSafe system offers organisations a complete solution, enabling them to manage and protect their workforce and comply with legal compliance requirements whilst reducing cost and liability. "We can provide you with a fully integrated solution – you can be completely paperless – also by using our system properly you will have a legally defensible product. We bespoke templates on the app to suit individual requirements, our latest release now means that the client can also do this themselves," said Gary.

Located in Burnley, its system is global and can be accessed from anywhere as long as you have an internet connection for the management portal, the app itself works off line and on-line so there is no restriction on using the app.

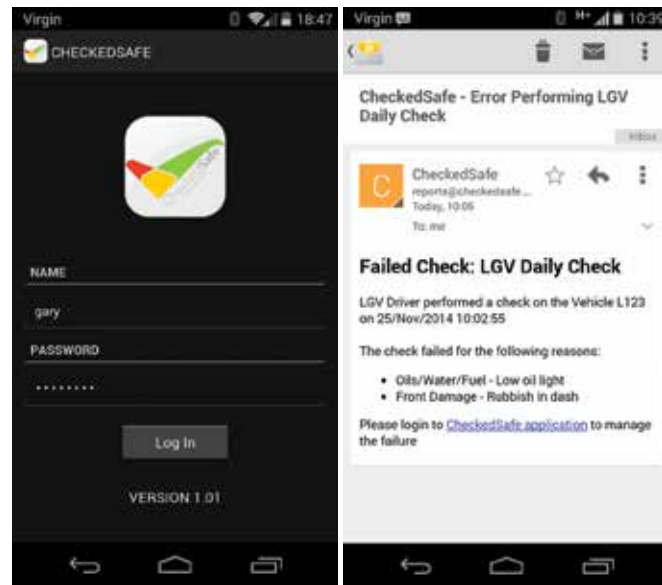
Both Darran and Gary's individual expertise has resulted in CheckedSafe being a nationally recognised company. "I am a transport professional with 30+ years in commercial transport, and Darran has 25+ years as a solicitor, so our individual skills set us apart from other 'IT' providers in the industry," said Gary.

CheckedSafe has a range of services from vehicle compliance solutions, compliance and regulations, risk assessment and incident reporting tools via the



App that enables them to offer the client a complete solution. Gary explained, "We constantly develop our product from user feedback. We release new features at least every quarter and a new app probably every four months depending on what features we have developed. Customer feedback is critical to us, we know a lot about transport, but the end users have great ideas that we take on board and use to develop free of charge and push out to the CheckedSafe community."

CheckedSafe's web-based reporting system is accredited by DVSA and the FLTA and utilised across all fleet types of HGV, PCV, VAN, plant or utilities. If



it needs a checklist, CheckedSafe can digitise and catalogue it, providing you with a cost-effective compliance solution.

With much of the industry yet to explore, over five million commercial vehicles in the UK and over 20 million pieces of plant, there is a huge market for CheckedSafe to expand into. "Our plan is to furrow into the fleet industry and develop new features, and if from this market we get new ideas then we will look to develop them further. We have recently developed our API to link with Dynamic 365 for a large crane operator which will come into development later this year/early 2022," stated Gary.

Despite COVID-19, CheckedSafe has managed to outsource all marketing resulting in an increase in in-bound enquiries. Utilising platforms such as Zoom and Teams, less time has been spent travelling and more focus has been on growing the business from home.

Eight years ago, CheckedSafe was an idea, that today, has flourished into a fully successful business. Gary and Darran are passionate about what they do and provide a skill set that boasts professionalism and expertise. "We know our industry and our clients have an immediate infinity with us and put faith in us," said Gary.

T 01282 908429
info@checkedsafe.com
www.checkedsafe.com



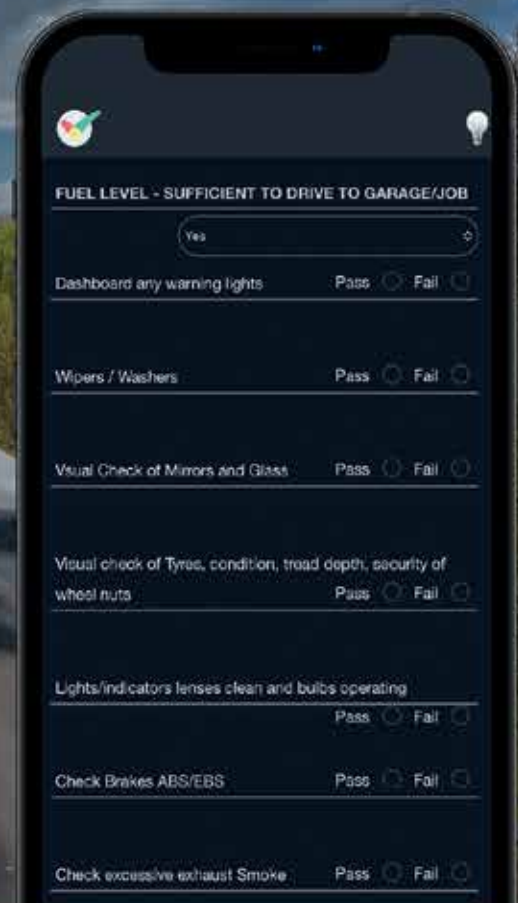
CheckedSafe's web-based reporting system is accredited by DVSA and the FLTA and utilised across all fleet types of HGV, PCV, VAN, plant or utilities. If



The vehicle compliance system for all fleets

Paperless defect reporting and fleet maintenance, all for **£1 per vehicle, per week**

- Driver's app
- Fleet portal
- GPS tags
- DVSA compliant



Try free for 30 days at **checkedsafe.com**
or call us on **01282 908 429**

Redefining best practice in the external wall insulation sector

Approved and recommended by leading manufacturers, Swifix Ltd offer the most cost-effective solutions to enable the fitting of external furniture through external wall insulation and rain

screen cladding, with the added benefit of being specifically designed for the job. Its solutions are held in high regard for the future of retrofitting and the Modular housing sectors as well as being the ideal

solution for a longer-term maintenance provision.

Previous best practice called for timber pattresses to be installed prior to the insulation being installed,

however due to introduction of PAS2035 to enable improvement in the quality of installation, timber is no longer accepted in the sector.

Swifix Ltd has engineered and designed the innovative range of products to eliminate the use of timber when installing external wall and rain screen insulation systems, and an environmentally friendly solution as manufactured from partially recycled materials and a fully recyclable product.

The company's proven multifaceted solutions are designed to help customers working across a number of industries. These include System Manufacturers, Main Contractors and Installers, Local Authorities and Registered Social Landlords, Architects, Homeowners and Private customers, as well as those involved in the Modern Methods of Construction (MMC) sector.

No matter the problem, Swifix Ltd maintains a strong and dependable ethos to deliver a service that is consistently high-quality and reliable. And, will always strive to keep its message clear of having the most innovative and cost-effective products currently available on the market, to produce products that are highly robust and technically better than that of any competition, and to accelerate its efforts



towards keeping the maintenance of all products risk free and easy to install.

Its extensive portfolio of products includes a solution for securing, rainwater goods, satellite fitting plates, tap fittings, connection point fittings, canopies, lights, alarms, fences providing a solution for both lightweight and heavier items, and all its products are recommended and also available from many leading system designers across the UK and Ireland ensuring that your investment is protected.

For more information, please see below:
T 01884 560477
info@swifix.co.uk
www.swifix.co.uk



INNOVATIVE PRODUCTS TO ENABLE FIXING THROUGH EXTERNAL WALL INSULATION

Our products are one of the most cost-effective solutions to enable the fitting of external furniture through external wall insulation and rain screen cladding, with the added benefit of being designed specifically for the job. Fully Pas2035 complaint for the future of retrofitting and the Modular housing sectors and the ideal solution for a longer term maintenance provision.

All fittings meet stringent technical requirements by preventing the compression of insulation and providing a watertight seal. They are also approved by many leading manufacturers and organisations developing modern methods of construction to support the requirement for new homes in the UK.



INNOVATIVE

A new cost-effective way to fit external furniture through walls and cladding



ROBUST

Super-strong to prevent insulation compression and provide a watertight seal



EASY TO INSTALL

Simple yet effective next generation solutions. See for yourself



To find out more, please visit www.swifix.co.uk, call **01884 560477** or email info@swifix.co.uk

The seriously multi-purpose GRP Roofing System

Established in 2012, Tuff Waterproofing Ltd is the UK's premium designer, manufacturer and supplier of heavy-duty GRP waterproof flat roofing systems. TuffStuff® has a dedicated product development team that work closely with customers and its own UK based manufacturing facility to produce an evolving product range that is suitable for multiple flat roof applications.

From its base in Sherburn in Elmet, North Yorkshire, TuffStuff® is the UK's premier GRP flat roofing system and supplies its products through a dedicated stockist network throughout the country.

The advanced TuffStuff® formula uses the latest liquid polyester resins, glass fibre mat reinforcement and flexible trims, to create a fully integrated waterproof, seamless attractive finish with a 25-year guarantee on materials.

Tuff Waterproofing has further expanded its TuffStuff® product range and is now offering its latest GRP roofing innovation; TuffStuff® flexible GRP. This is a single resin solution that provides an exceptional combination of versatility and durability. It is extremely quick to lay and does not require stripping or re-decking of the roof, saving customers both



time and money. It can be applied to a variety of surface types and structures including vertical sections.

Managing Director, Greg Gimenez commented, "Standard GRP is rigid when it is cured, and it is specifically designed for flat roofs. However it can only be applied to OSB3 (Timber), and while this has been very successful, contractors have been looking for overlay systems which can go over other substrates." TuffStuff Flexible GRP can go onto many substrates including felt, asphalt, single-ply, GRP, concrete, timber and metal.

While other companies have standard GRP, TuffStuff® knows that this flexible GRP provides



an exceptional combination of versatility and durability. TuffStuff® flexible GRP has become a very important product already, for a number of reasons. It is a one-pot system, whereas standard GRP comes with a base coat as well as a top coat, and this saves a contractor plenty of time and, comes with a 20 year product guarantee on the full system.

However, the major advantage is that while it is curing, it is actually showerproof, and Greg commented, "If contractors experience a rogue shower while installing, they may have to go off-site, but upon returning they can carry on knowing that their work is not ruined (showerproof whilst curing), as it would be with standard GRP. This aspect of our product will really excite contractors that work with GRP regularly." This plus the fact that it is crack resistant, with no weak points has meant that facility



companies have also begun using the flexible GRP for patch repairs too.

TuffStuff® Flexible GRP will form a highly flexible, extra tough and seamless waterproof membrane – an ideal solution for areas of heavy-duty foot traffic.

Tuff Waterproofing Ltd will be exhibiting at the UK Construction Week in October in Birmingham, during which clients can find out more about this amazing new product.

**For more information,
please see below:
T 01977 680250
info@tuffwaterproofing.co.uk
www.tuffstuff.co.uk**



SCAN ME



FLEXIBLE GRP

Providing an exceptional combination of versatility and durability. Quick to lay, with no need to strip or re-deck a roof, this fast-curing system saves time and money.

It's a single-resin solution which can be applied to a multitude of surface types and structures including vertical sections.

With two coats applied within one hour, TuffStuff® Flexible GRP will form a highly flexible, extra tough and seamless waterproof membrane - can be a solution for areas of heavy duty foot traffic.

TUFF STUFF FLEXIBLE GRP



www.tuffstuff.co.uk

T 01977 680250
orders@tuffwaterproofing.co.uk

Make your project possible

DCON Safety Consultants Limited offers leading health and safety consultancy and construction statute advice services. The company prioritises and specialises in the highest levels of informed and intelligent advice, senior project resource allocation and compliance assurance. Informed by industry expertise, DCON Safety Consultants Limited knows that every project has potential risks, no matter what its potential benefits, so its team of highly



experienced construction professionals helps to ensure clients' statutory conformity.

Upon gaining understanding of the specific needs, goals and desires of each client and their project, DCON Safety Consultants Limited is dedicated to implementing a design and construction management plan that will meet or exceed these requirements. And, DCON Safety Consultants Limited ensures that there is honesty, integrity, trust and professionalism underpinning every project.



Moreover, the company's services are centred on three delivery principles:

- **Maximising Quality:** The company implements proven health, safety and wellbeing strategies to help clients achieve high quality and cost-effective work commensurate with the design of their projects.
- **Minimising Risk:** The company effectively manages design and delivery risk on projects to match each client's desired risk level profile.
- **Managing Compliance:** The company relies on its extensive background working on a wide variety of projects to assist clients in developing, monitoring and maintaining compliance performance.

This excellent service would not be possible without the leadership of Diarmuid Condon, a construction industry leader who brings unique perspectives to encourage, support and mentor the abilities of his colleagues. As a construction professional with a surveying background and experience spanning two decades, Diarmuid is emblematic of DCON Safety Consultants Limited's commitment to providing outstanding services to clients.

Diarmuid has contributed his invaluable expertise to over 400 projects over 20 years, with a client list including public sector departments, corporate owners, real estate developers, main contractors, design professionals and infrastructural bodies. With this incredible portfolio, Diarmuid is helping DCON Safety Consultants Limited to become a leader in health and safety consultancy across the construction industry.

Key to DCON Safety Consultants Limited's services is working as a Project Supervisor for the Design Process and CDM Advisor in various sectors across the Irish construction market. No project is too

simple or too complex for the company's construction safety consultants, all of whom are construction professionals with an average of 20 years' experience in the built environment. The ability to maximise this knowledge and skillset means DCON Safety Consultants Limited can generate distinctive and innovative ideas from traditional PSDP service inputs and outputs.

Additionally, DCON Safety Consultants Limited offers planning compliance assurance services. The ability to strategically support a positive planning decision is exclusive to the company. Its Draft Construction Management Plans (DCMP) inform the overall planning, coordination and control of a project from the beginning of construction to completion. The DCMP also safeguards the obligation placed upon a client to produce a safe, functional and financially viable project.

DCON Safety Consultants Limited also provides its main contractor clients with intelligent, practical, and reasonable physical site safety advice to support compliance and good practice adherence. Behavioural safety outcomes inform how the company approaches each solution with the contractor and their supply chain, identifying opportunities for improvement.



To complement this, DCON Safety Consultants Limited can also help with clients' health and safety strategy. Its holistic and integrated approach can help unlock substantial benefits for clients by providing a structured, objective and SMART framework for full optimisation through the creation of an environment that embraces health, safety and wellbeing.

This means DCON Safety Consultants Limited helps clients to improve their health, safety and environmental performance; enhance staff satisfaction thanks to improved performance; improve risk management and corporate governance with a clear audit trail; gain confidence from long-term planning, better sustainability and performance; and improve overall corporate reputation,



including greater staff satisfaction and a more efficient procurement and supply chain.

Finally, DCON Safety Consultants Limited can offer a safety expert witness service, which is headed by Diarmuid himself. He has extensively supported safety-related matters, and is a certified and competent safety professional who will work with clients to identify exactly what kind of safety expert is needed. Then, he will use an extensive network of contacts to recruit the right person to protect clients' interests.

DCON Safety Consultants Limited's fantastic service offering and proven track record

of offering leading health and safety consultancy services makes the company a worthy winner of our Commitment to Excellence award. Such achievements are proof that DCON Safety Consultants Limited is well-placed to help ensure your safety, health and wellbeing and make your project possible.

If you are interested in finding out more information on DCON Safety Consultants Limited's full range of excellent services, head to the website or get in touch directly using the contact details below.

Contact
T +353 (0)1 611 1556
diarmuid.condon@dconsafety.com
www.dconsafety.com

Forward

The Belgian fifth-generation family company, founded in 1883 Vandecasteele Houtimport specializes in the import, trading and export of Tropical Hardwood from Africa, Southeast Asia and South America, Scandinavian and North-American Softwood, North American and European Hardwood.

"Vandecasteele Houtimport is fully committed to certified timber," says Isabelle Polfliet, Compliance Manager at Vandecasteele, "We're living in challenging times. But, it's for times like these we exist."

With over 140 years of experience, we know there's only one way: forward.

Sustainability and reliability are an essential part of Vandecasteele Houtimport's DNA. The company is determined to achieve the goal of trading only certified timber by 2025. Isabelle Polfliet, "As far as softwood is concerned, we are at 100%. The challenge, however, lies with the hardwood and especially the tropical hardwoods. Today we are at 80% certified!"

Vandecasteele Houtimport has a clear vision: only certified timber has a future. Substantial investments have been made over the years to be able to realize this future perspective.

"You cannot achieve this goal overnight. This is a long-term job, in which all partners must be included. If we want to assure our customers that we keep our promise to only trade timber that comes from well-managed, certified forests, we need to be sure that all our trading partners share the same strictest certification and sustainability processes as we do."

This has resulted in several actions within the company. "First of all, we were assisted by external experts to get the procedures and protocols in order. Secondly, the team at Vandecasteele was reinforced with 2 forest engineers in Brazil.

"That way we can keep a finger on the pulse of every shipment and we are able to accurately apply the ever-changing legislation in Brazil with great precision."

This sends an important signal to our suppliers. They know that doing business with Vandecasteele Houtimport means: complying with a procedure that is continuously refined and adapted. All timber transport requires our approval. When in doubt the timber is not accepted."

Masters in diversification

Vandecasteele has a long-term commitment to preserving the forests. The family business imports more than 130 different species of timber coming from 40 countries and has over 105,000 cubic meters in stock, mainly certified hard and softwoods.

"We support the LKTS program of FSC® Denmark with which we want to help promote the use of lesser known species. We keep these lesser-known species in stock and offer them as alternatives. Everybody is looking for alternatives for Siberian Larch since the ban on Russian imports.

We have over 15 timber species that we can offer as alternatives, such as FSC® Certified Niové, Movingui, Mukulungu, Tali, Padouk, Jutai, Angelim Amargoso, Red Louro, Sucupira Preta, Sucupira Vermelho, Jatoba, Mandioqueira, Cumaru, Basrolucus, Guariuba, Tatajuba, European Oak, Muiracatiara, Purpleheart and Louro Preto.

Timber is too often prescribed from a specific well-known species, but from the point of view of responsible forest management, we must dare to choose the right durability class for an application instead of a specific type of timber, says Geneviève Standaert, export manager at Vandecasteele Houtimport.

Preservation of the forest

In a well-managed forest, only mature trees are harvested, which amounts to one to three trees per

hectare. After that, felling will not take place for at least 25 years. In this way, the forest is preserved for the future.

Rethink everything

We notice a positive evolution in consumer purchasing behaviour says Geneviève. Customers are increasingly asking questions about certification and the origin of the timber.

Buyers are becoming more and more aware of the need to use certified timber. "Importing tropical wood goes further than just asking for certified timber. There is a continuous evolution, because of new insights, new legislation, etc. We work together with external experts, we are

broadening our internal knowledge and we continually make progress."

Making progress is an ongoing process. Considerable steps have already been taken with the arrival of the EU Timber Regulation, but we can and should do better. "We want to see and monitor a stronger application and support for certified timber. Vandecasteele communicates continuously with the users via the website and campaigns in order to spread that Message. This is necessary, because the purchase of FSC® certified wood contributes to 14 of the 17 Sustainable Development Goals (or SDG's) of the United Nations.' Since the year 2000, Vandecasteele



Houtimport has committed itself through the Corporate Durability Charter by signing up to environmental objectives exceeding the applicable legislation.

T +32 56 43 33 00
www.vandecasteele.be



VANDECASTEELE
HOUTIMPORT

Discover our world of timber



Nature's first choice



Ask for your personal login to our online portal



Prompt delivery



More than 50 decking species

Endless possibilities for decking and cladding

Contact
Bergstraat 25
8511 Aalbeke
België
vandecasteele.be

dave@vandecasteele.be
+44 15 94 83 43 32
genevieve@vandecasteele.be
+32 56 43 33 00



High quality, high capacity mowing systems

In this issue of Building Update, we are pleased to announce that we have selected L S Products BV as the recipient of our Commitment to Excellence Award for its dedication and innovative design of the best mowing systems for the maintenance of large area turfgrass.

As a response to the increasing market demand for an upgrade to the 15-year-old electrically driven rotary mowers, the company started working on a newer, more improved version. Combining his years of experience and expertise, Syb Leijenaar – LS Products BV owner and Eco Clipper® inventor developed a new line of electric mowers that graced the market in 2018, and this was when the Eco Clipper® was born.

Built from experience, the Eco Clipper® Mowing System has evolved from the mowing system that was originally developed in the nineties on the turfgrass farm of the Leijenaar family in the Netherlands. Since the first electric mower product launch in 2002 to the latest Eco Clipper® range, L S Products BV has developed an extensive portfolio of machinery and equipment that has grown rapidly and been revolutionary to the turfgrass industry.

"Eco Clipper® is a range of large area mowers with a high productivity that help field managers to minimise their mowing costs, while producing a professional cut. Our mowers are electrically driven and use a special mowing deck design with small mowing blades. The mowing decks have good contour following capabilities and disperse clippings well, even in wet grass. This means we have a few important advantages over other mowers. These include delivering the highest mowing speed possible thus producing a higher productivity, they are quieter and more fuel efficient because of the small blades and electric drive, and they are more versatile to schedule because they can deal with wet grass and any other adverse weather conditions," said Syb.



The Eco Clipper® Mowing System offers many advantages over traditional cylinder and rotary mowers. Because it consists of an independently suspended 106cm wide deck section, it is cleverly linked together in larger, flexible contour following mowing decks. The entire design and development of the Eco Clipper® Mowing System delivers a clean cut, even clippings dispersion and excellent following of the ground contours with minimal soil compaction.

The system also caters for bespoke requirements so customers can attach the decks to different frames, whether it be Carried or Towed. Offering three options, the Front Mower consists of a single deck with 2-6 sections, a Towed Mower consists of three separate decks of 10-14 sections wide, and a Carried Rear Mower is combined with a Front Mower and consists of 10-14 sections wide.

We asked Syb if he were to describe the company in three words what would he choose and why, and he answered, "Innovative, we believe that it is always possible to improve. Secondly, our serving. What we offer our customers is ultimately a solution to the problems they are facing. Our products are designed to help our customers to do their job better. And thirdly, we are agile. Every member of our team has the ability to act fast and adapt to the ever-changing



industry. We are also quick to react to any problems our customers may be facing and work hard to do what needs to be done to help them."

One particular product to note is the Eco Clipper FM4 Sport for sporting grounds.

Similar to the entire Eco Clipper® Mowing Range, the goal with the Eco Clipper FM4 Sport was to maintain the cutting performance of a properly tuned cylinder mower, but without the high maintenance required for mowing conditions such as wet grass and weeds.

The smooth cutting decks with fast rotating small blades ensure a high quality of cut and a good distribution of the clippings. The clippings are also well spread in wet grass, which makes it possible to schedule the mower almost independently to all weather conditions.

Due to the electrically driven blades, the mower is very economical and quiet. The large wheels and clever deck linking system ensure good contour following and enable high mowing speeds.

Municipalities, sports field and park managers have taken delight in the advantages that the Eco Clipper FM4 Sport brings. The EC-FM4 Sport is a 4.11m

wide mower that has four independent cutting decks. The forward position provides excellent visibility and comfort for the tractor operator.

Previous users have reported high productivity gains, a factor two compared to 5-gang self-propelled cylinder mowers, and showed a large appreciation to the low maintenance and the mowers ability to schedule the mowing even under less favourable mowing conditions such as early morning dew and wet autumns.

"We started our focus on increasing mowing productivity in turfgrass production. With a few adjustments, this mowing system has proven to be a major step forward in reducing mowing costs on sports fields and large recreational grass areas. Some users have cut their mowing costs by more than half since using it!" stated Syb.

Going forward, L S Products BV is looking to continue its successful start in the sports field market in the Netherlands and is keen to now debut this line of products here in the UK to British sports field managers so they can also enjoy the benefits of the Eco Clipper® Mowing System.

With the development of a robotic mower for turfgrass production in the pipeline, L S Products BV has a busy yet exciting few years ahead. In closing, we asked Syb what a commitment to excellence means to the company, "We feel we achieve excellence because we are completely committed to offering the best mowing system for maintaining large area turfgrass which is of course, achieved by our Eco Clipper® Mowing System."

For more information, please see below:
T +31 6 46 75 35 60
info@ecoclipper.com
www.ecoclipper.com

'Dedicated to offer the best mowing system for maintaining large area turfgrass'



Eco Clipper FM4 Sport
for sporting grounds
www.ecoclipper.com

ECO CLIPPER®

Leading the way in deep hole drilling

At Industrial Solutions, we take pride in showcasing the very best services provided by companies that provide a wealth of benefits for their industry. As such, in this issue we are proud to announce that we have selected UNISIG as our Deep Hole Drilling Specialists of 2022 and the recipient of our Industry Specialist Award.

Originally founded to provide deep hole drilling machines, accessories and related services to the US market, UNISIG is one of the largest producers of deep hole drilling machines, and

applications, to accommodate any specific requirement.

Since its establishment, UNISIG has built up a trusted reputation amongst its broad range of customers. As the leading producer of gun drilling and deep hole drilling machines, customers of UNISIG rely on its deep hole drilling technologies for the powerful, intuitive capabilities they offer.

Serving industries such as aerospace, energy, firearms, hydraulic cylinders, medical, military and defense, molds, oil and gas, and automotive, UNISIG



an industry leader in technology, innovation, support, and service. From small job shops looking to expand their capabilities, to large OEM's that need to drill millions of holes, UNISIG has the capabilities and the strong understanding of the deep hole drilling process, drilling tools and their

has a strong presence all over the world with installations in the Americas, Europe and Asia.

By offering a complete deep hole drilling solution that includes machines, tools and automation, customers will receive the upmost, highest quality service from engineers that hold extensive experience and expertise on deep hole drilling machines. Throughout the years, UNISIG's impressive drilling capabilities have propelled the company to the forefront of the industry offering a service that goes completely unrivalled amongst competitors. Setting the standards of the industry high when it comes its technological advancements,



UNISIG doesn't just manufacture deep hole drilling machines, it can also develop machines for other deep hole processes such as BTA, gun drilling, counterboring/reaming, pull boring, trepanning, skiving and roller burnishing, bottle boring, bottom forming and many more.



Pushing the limits of BTA drilling, with on and off-centre capabilities that offer intuitive operation, UNISIG manufactures high power BTA drilling machines and trepanning that enable BTA drilling of 25mm to 500mm up to 20m deep.

The B-Series machines handle an impressive range of on-centre BTA drilling and are the ideal solution for a majority of BTA range diameter deep hole drilling applications. This series uses BTA and related tools to produce centreline holes on parts up to 20m deep and are supported with training from UNISIG throughout the process.

The larger swing B-Series machines have virtually limitless capabilities, giving manufacturers the most in power and dimension requirements. As part of the deep hole drilling system, this

range combines rigid deep hole drilling with durable components and powerful drives with smart controls, allowing manufacturers to get the most out of their deep hole drilling investment.

It is evident that UNISIG is at the top of its game, manufacturing some of the highest-quality machines in the deep hole drilling industry. With its team of dedicated experts all pulling together, the company is really showing how anything is possible when you work together to solve problems, not create them.

Please visit us at EMO 2023, Hannover from 18th-23rd September.

For more information, please see below:
T +49 7125 9687590
info@unisig.de
www.unisig.com



See us at



UNISIG.COM

A large, industrial-grade deep hole drilling machine is shown in a close-up, black and white photograph. The machine is complex, with various components like the drill bit, guide, and support structures visible. The UNISIG logo is overlaid on the bottom left of this image.

UNISIG

UNISIG TAKES YOUR GUNDRILLING PRODUCTION FURTHER

Gundrilling and BTA deep hole drilling for highly productive shops.

Whether your shop needs on-center or off-center holes, specialized job shop work or fully automated production, UNISIG has a deep hole drilling solution with the accuracy and performance you need.

Take your shop's production further - learn more at UNISIG.COM.



Machines • Tools • Automation

UNISIG machines, engineered and manufactured in the USA

UNISIG

DEEP HOLE DRILLING SYSTEMS

Lighting & Electrical

Providing Power Distribution Products for over 40 years

Fisher & Company have been manufacturing and designing their own products for over 40 years. Products for the highways & streetlighting, outdoor power, leisure and sports facilities, car parks, markets and now EV charging. They also make bespoke products for customers where particular requirements are specified.

The Somerset-based company is a leading supplier of Feeder Pillars and Wall Boxes, Sign & Light Brackets, Belisha & Refuge Beacons: mains & solar and electrically insulated digging tools.

Since gaining their ISO 9001:2015 Quality Accreditation during Lockdown, Fisher & Company have added to its list of overseas customers: exporting to new countries including Cyprus and Hong Kong.

2022 has been the busiest year on record, with several large UK projects.

Interest in Fisher & Company's two main products: Belisha Beacons and Feeder Pillars has increased from new companies. These include: schools, hospitals to commercial developments, all discovering the high-quality service and products meet both their specifications and quick delivery expectations.

The Fisher & Company Feeder Pillar range is extensive: the SDMP Mini Pillar and BD styles come in a range of sizes, or for larger Pillars, the FFP range is perfect. The ever-popular Belisha Beacons for zebra crossings ranges from the standard Mains Powered AmberGLO8 to the Solar Powered SolarisV2 or SolarisPTM, for greater sustainability.

As the UK moves towards the 2050 net-zero target, the SolarisV2 solar-powered Belisha Beacon is the perfect greener choice for car parks, supermarkets and college campuses, with the photovoltaic (PV) panels powering rechargeable batteries for reliable operation. With no reliance on mains power, these efficient, sustainable pedestrian crossings continue to work, even in poor weather conditions, providing safe crossings where no power is available.

Fisher & Company has worked tirelessly to design and manufacture only the highest-quality products and reviews for their products and services are very positive. Casting Services was delighted with the Stainless BD Feeder Pillar made for them.

"I first rang Fishers and spoke to Hannah, with my initial enquiry for a feeder pillar she was very helpful and managed to source out exactly what I required. I placed the order and the delivery date given was adhered to. The quality of the feeder pillar received was very good and I would have no hesitation in recommending this company. I spoke to this site foreman and he was pleased with the product."



To view the whole product range, including spares like LED Crossing Spotlights, Courtesy Shields and LED Beacons in Pre-Wired and BC22 fittings for retro fitting – available for both Belisha and Refuge Beacons, please see the website below:

Contact
T + 44 (0)333 666 2122
info@fisherandcompany.co.uk
www.fisherandcompany.co.uk
Twitter https://twitter.com/FeederPillars
Linkedin https://www.linkedin.com/company/fisher-company-ltd

Software

Taking your business to the next level

elevateTM

Construction Made Easy

Elevate is a complete management system, specifically designed to ensure the smooth and professional running of businesses.

Elevate was designed by Steve McGowan, who maintains over 35 years' experience in construction, and duties ranging from Managing Director, Consultant, Troubleshooter, Senior Project Manager and Design Co-ordinator.

Elevate is an innovative, hub of information that enables businesses to use proactive management instead of reactive management. Simplifying management, Elevate has automated as much of the process as possible, increasing the productivity and reducing down time and work load of employees.

This helps to ensure that works are completed correctly and on time, improving performance, quality and providing a stress-free management solution.

Elevate has been designed to be extremely user-friendly and offers the latest features, such as the automatic programme, valuations and cash flow forecasts.

With some many unique, advanced features available, Elevate is able to offer a comprehensive package by linking them together to provide its customers with a full solution.

If you would like to find out more information, please see below:
T 01962 761693
www.elevate-software.com



Portable Buildings

Manufacturer of Modular, Containers & Cabins

Steel AV Cabins • Smoking Shelters • Chemical Stores & Storage Units
Staircases & Steps • Effluent Tanks • Water Bowzers • Turnstiles

INTRODUCING

MODCONCABINTRADER
www.modconcabins.co.uk

info@modconcabins.co.uk +44(0)333 404 8822 07842 318869

ModCon Cabin Trader, the Modular, Portable Building & Plant Industry related, Resale/Auction website!

The UK's number one sealing solutions provider

Service Sealing Solutions Ltd provide a number of different sealing solutions across the UK to both the public and private sectors. As the sole UK distributor for the sealing industry's top manufacturers; DOYMA, FRANK and HKD, Service Sealing Solutions Ltd offers the UK the most extensive range of products that are German manufactured and far outweigh that of any competitor.

Service Sealing Solutions Ltd specialises in high-quality service duct sealing systems for utility services and watertight seals. The company's ever growing market range can benefit from its broad scope of innovative sealing solutions alongside receiving the highest level of expertise.

In 2018, DOYMA granted Service Sealing Solutions Ltd the exclusive rights to distribute their products in the UK. DOYMA stands on the front line when it comes to the development of innovative, practical solutions for sealing

and fire systems. Providing the very best in German engineering, DOYMA is used to seal penetration points in walls and floors to permanently prevent any infiltration of gases and water into the building. All DOYMA products are designed to solve all watertight duct sealing requirements, prevent against structural damage and incorporate rubber mouldings that ensure all gas and watertight features.

Demanding building types, such as power plants, large industrial plants, reservoirs or airports, often require highly specialised custom-made constructions. They place high demands on the fact that building penetrations such as cables and pipe work need to be permanently sealed. In the case of extraordinary pipe dimensions or special thermal, chemical or physical requirements, sealing systems in the form of a special construction are the required solution.

DOYMA have the expertise and an experience of over 50 years to develop and produce the best solution for any building or project, using state-of-the-art design and manufacturing methods as well as professional simulation methods to ensure safety when using DOYMA special constructions.

Suitable mostly for builders of commercial properties, Service Sealing Solutions Ltd has a large range of DOYMA products that come with a 25-year warranty. DOYMA product brochures are available on the website and include products that have been supplied to some of the UK's largest projects such as HS2

and Kings Cross in London. DOYMA has recently released its new generation Curaflex Nova® gaskets which are the perfect solution for any professional tradesman instantly looking to solve sealing problems and can be adapted to multiple applications.

As a UK distributor for FRANK puddle flanges, Service Sealing Solutions Ltd provide assured watertight sealing of pipes through concrete walls, foundation plates and manholes. The FRANK puddle flange is an extremely flexible product and comes in a range of versions. Made from EPDM, the puddle flanges act as a barrier which are also chemically resistant to a wide range of acids and bases. Depending on the diameter, they are proven to be tight and to hold pressures between 8 to 10 bars. FRANK puddles flanges also offer exceptional



resistance to ozone and weathering conditions, and can be installed during construction resulting in a perfect cost-effective alternative to conventional sealing systems.

Lastly, Service Sealing Solutions also supplies HKD products, which are now owned by DOYMA. HKD manufacture a large range of pipe sealing systems and service conduits that are guaranteed to withstand up to four bars pressure. HKD systems have a sealing solution for service conduits cast into concrete without the sleeves. They are supplied and ready to use, requiring no site preparation work prior to installation. With options such as KE Socketless service conduits, KG Wall Ducts and Floor Ducts, together with KG Twin Sockets for installation in pump sumps, HKD products are ideal for situations where suitability for thin-walled concrete structures is vital.

Contact
T 01952 510050
www.servicesealingsolutions.co.uk



Service Sealing Solutions Ltd

Tel 01952 510050
sales@servicesealingsolutions.co.uk
www.servicesealingsolutions.co.uk

Service Sealing Solutions are the sole UK distributor for pioneering the sealing industry's top manufacturers; DOYMA, FRANK and HKD.

Service Sealing Solutions are the sole UK distributor. Wherever services are installed through walls, ceilings or floors, penetrating water may cause damage to buildings. Lack of attention to the points of entry of pipes and cables into the building can have serious results: damp cellars, equipment damaged by water ingress and high repair costs.

Service sealing systems ensure professional and perfect pipe sealing, thus presenting excellent preventative measures against structural damage.

The very best in German engineering is used to seal penetration points at the wall to permanently prevent any infiltration of gases and water into the building, and the duct sealing systems are guaranteed for 25 years.



Quality, bespoke joinery since 1991

Joinery experts, Bluerun Ltd, was originally established by the current Managing Director, John Jones, and Peter Clayden back in 1991. Peter Clayden resigned a few years later and the company is now owned by John's family – his wife Doreen, son Jeremy, and daughter Dee Newman, and Dee took over the reins in December 2019, when John semi-retired.

Based in Wimbish, near Saffron Walden in Essex, Bluerun manufactures quality, bespoke joinery items, and everything is made to order, nothing is 'off the shelf.' Dee commented, "We manufacture items for the commercial market from door and window packers, to shopfronts, reception desks, mainframes, pub doors, and years ago we even made a trebuchet for Stansted Mountfitchet castle!"

In the 7,000 sq. ft. factory, Bluerun can produce work using both hard or softwoods, and veneered and painted panels. It has a modern spray paint and lacquer facility, enabling products to leave the factory in a fully finished state.

For domestic clients, Bluerun manufactures everything from windowboards to windows, thresholds to doors, shelving, wardrobes, bi-fold doors, French doors, staircases, indeed most things in a property that are made of timber. It has even made a child's Wendy house and a mansion for cats!

Bluerun will take on projects of almost any size, Dee continued, "The only size limit is whether a finished item can be removed through our workshop doors! Staircases for example, would be made in a kit format, for ease of delivery and installation. We use couriers for deliveries, and they have access to all sizes of vans and lorries." The only thing that is sometimes out of range are installations due to a small workforce, but Dee keeps a list of recommended installers for anything, which is manufactured.



In a crowded marketplace, Bluerun works very hard to be at the forefront of the industry. It is a supplier to Dovista for items such as packers and mainframes, and the company corporate branding is on its vans, emails, and social media presence, along with promotional items, and this has helped recognition and growth of the company in recent years.

Dee remarked, "We are still working old school, and everything is designed using pencil and paper with a dash of imagination. We don't use CAD or CNC, and most items are completed using hand tools for the finishing touches. A lot of love and care is included

within our work, and this has really helped our customer base to grow."

So whether you are looking for a one-off custom made gate, a staircase, or a production run of doors and windows for a new housing development, or a new interior for your pub, restaurant or office, Bluerun can deliver exactly what you are looking for.

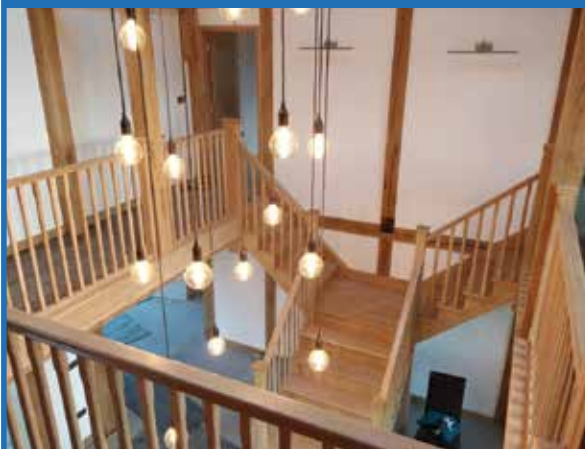
For more information, please see below:
T 01799 599995
dee@bluerunltd.co.uk
www.bluerunltd.co.uk



Bluerun Limited

quality bespoke joinery since 1991

QUALITY, CUSTOM MADE JOINERY



Bluerun Ltd have been manufacturing top quality, purpose made joinery for the domestic and commercial markets for over 30 years.

Contact us to discuss your requirements.



Please visit our website: **www.bluerunltd.co.uk**
Tel: **01799 599995** | Email: **dee@bluerunltd.co.uk**
f bluerunltd @ bluerun_joinery



CONCRETE WASHOUT & WATER TREATMENT SOLUTIONS



SIMPLE, INNOVATIVE, COST-EFFECTIVE solutions to treat wastewater & concrete washwater

Concrete Washouts: Simple solutions for washing off concrete wagon chutes and equipment

Water Treatment: Ideal onsite equipment, Lamella clarifiers, Sediment Removal, Flocculation & pH Control systems

**For further information, please visit
www.kellytanks.co.uk or call 01889 508944
or email info@kellytanks.co.uk**

Dolwin & Gray

Established 1969



Hedge, Copse & Woodland planting
(Transplants to semi-mature)

Cultivation & Seeding Paddocks etc Turfing

All aspects of Tree Work, Surveys and
Reports to BS5837:2012 Trees in Relation
to Design, Demolition and Construction –
Recommendations

www.dolwinandgray.co.uk

Tel 01892 853232

Email enquiries@dolwinandgray.co.uk



VANDECASTEELE
HOUTIMPORT

Discover our
world of timber

Choose life, Choose wood



Nature's first choice



Ask for your
personal login to
our online portal



Prompt delivery



More than 50
decking species

Photo © Dieter Dejonghe

Endless possibilities for
decking and cladding

Contact

Bergstraat 25
8511 Aalbeke
Belgium
vandecasteele.be

genevieve@vandecasteele.be
+32 56 43 33 00
dave@vandecasteele.be
+44 15 94 83 43 32

The Home of Le Tonkinois Varnish UK

B & D Murkin are a small family run business based in Maidenhead. Providing varnish and sander products, they are the sole importers of Le Tonkinois Varnish and the Flexidisc Sander.

They have been importing Le Tonkinois Varnish and the Flexidisc sander for almost 40 years.

They demonstrate and sell these products on various shows throughout the UK and operate a first class mail order service.

Le Tonkinois Varnish is a traditional oil based varnish, manufactured using a 200 year old Chinese recipe. It contains Linseed oil, Tung oil & natural resins. No solvents or water therefore it is environmentally friendly and is a pleasure to work with, no nasty smells and no brush marks.

Le Tonkinois Varnish is 100% waterproof and does not crack or flake off, even on oily woods like Teak and Iroko. It also withstands hot pans and boiling water. It produces a high quality and professional finish and requires very little maintenance, simply add a top up coat every few years as required.

Le Tonkinois Varnish has gained world recognition for its results and is regarded as one of the world's best varnishes for indoor, outdoor and marine use.

The flexidisc sander is an extremely unique piece of equipment, although being a general sander, it can also be converted into many other applications including: finishing sander, bench grinder, general purpose sharpener, partial angle grinder,



polish applicator, polisher and grinds glass and nails.

"The Flexidisc sander can be used to prepare any type of material prior to applying Le Tonkinois and results in a better finish than most orbital Sanders in a fraction of the time.

For any more information, please see the details below:
www.letonkinoisvarnish.co.uk

LE TONKINOIS NATURAL OIL VARNISH

Le Tonkinois is a traditional natural oil based varnish. It is perfect for outdoor, indoor or marine use. With Le Tonkinois varnish the options really are endless.

Combining unrivalled long lasting protection on materials including wood, metal, cork, stone, teak, mdf and grp Le Tonkinois varnish leaves absolutely no brush marks and will restore the beauty and colour of the wood. Flexible enough to move with the timber and able to withstand abrasion and impact, Le Tonkinois varnish is resistant to boiling water, UV, petrol, diesel and sea water. It won't crack, chip or peel off, making it perfect for all outdoor purposes as well as indoor.

www.letonkinoisvarnish.co.uk
01628 548840



ACCON UK

ENVIRONMENTAL CONSULTANTS



We are one of the UK's leading niche environmental consultancies, specialising in air quality, noise, vibration, lighting, flood risk assessment, contaminated land, daylight & sunlight assessment and Environmental Impact Assessment (EIA). Our standards of EIAs, technical reports and planning proposals ensure you get the most robust and reliable results. ACCON UK's wealth of experience and efficiency enables us to produce cost-effective air quality, noise and EIA reports for our clients. We maintain a wide range of noise, vibration and air pollutant measurement equipment to ensure the very best outcomes for our clients.

We offer focussed solutions for all our clients provided by our team of experts, all of whom are specialist environmental assessment consultants and are up-to-date with the most relevant and latest revisions to the planning system.

Contact ACCON UK today to discuss your individual requirements with one of our consultants.

Our range of sector expertise includes:

- Major Infrastructure Projects
- Transportation – Road, Air and Rail
- Residential and Commercial Development
- Sports Stadia and Recreational Facilities
- Industrial
- Energy and Wind Farm Developments
- Mining and Quarrying
- Petro-Chemical



Tel: +44 (0)118 971 0000
enquiry@accon-uk.com
www.accon-uk.com