

INDUSTRIAL SOLUTIONS UK

ISSUE: 661 | JANUARY 2023 | www.solutionspublishing.co.uk

www.facebook.com/solutionsuknews | [@Publishing_2016](https://twitter.com/Publishing_2016)

LEADING THE WAY IN DEEP HOLE DRILLING

Find out more on pages 4-5

Specialising in the supply, maintenance and manufacture of industrial air pollution control and odour control systems

See them on page 2



The UK's leading multimodal forwarders and logistics organisations since 1870

See them on page 12

Davies Turner

Zehnder Group
turn to page 3

UNISIG
turn to page 4-5

Davison Forklift
turn to page 7

Camb Machine Knives
turn to page 9

Service Sealing Solutions
turn to page 10

Red Herring Events
turn to page 11

Harlequin Floors
turn to page 13

Curtiss Wright
turn to page 14

Revolutionary door scheduling software opens doors to productivity

Software Company of Choice 2022

See them on page VIII in BUILDING UPDATE



Contents

03 Eco Physics
Emissions Monitoring
& Gas Manufacturing

04 UNISIG
Deephole Drilling

08 Direct Hoist
Hoists

09 Camb Machine
Knives
Machine Knives

11 The George
Hotel
Events

12 Davies Turner
Logistics

Including BUILDING UPDATE

Featuring a wide variety of companies from across the UK and Europe, from Builders to Landscaping.

Editors Comments

Hello & Welcome to Issue 660 of Industrial Solutions UK!

The team at Industrial Solutions UK has been working extremely hard to bring you an issue that is full of innovative and exhilarating companies and we are very excited to share their success and achievements with you.

We have searched the length and breadth of the UK to bring you some of the most ground-breaking innovations and this month, we are overjoyed to be highlighting the activities of UNISIG and Service Sealing Solutions.

Firstly, we would like to focus on the accomplishments of UNISIG who this month features on our front cover!

Secondly, we are featuring Service Sealing Solutions with the 'Sealing Solutions' profile following their impressive performance over the years. For more information, turn to page 10.

I hope you enjoy reading this issue of Industrial Solutions as much as we have enjoyed bringing it to you. Happy reading and we hope to see you for the next edition!

Ian Hayward, Editor
INDUSTRIAL SOLUTIONS UK

For all advertising
& sales enquiries, please
contact Ian Hayward
0121 241 8788



Odour & Air Pollution Control Systems

ERG (Air Pollution Control) Ltd cleans up

The ERG group has over 40 years' experience and operates through three divisions. The powerhouse of the group is the first of these, ERG (Air Pollution Control) Ltd. This division has highly qualified and experienced teams of chemical, mechanical and electrical engineers who, together with design engineers, project managers and procurement professionals, design and supply bespoke gas scrubbing systems and odour control plants to meet their clients' requirements.

ERG solves the full spectrum of gas cleaning challenges facing its clients; whether it is a requirement to remove foul odours from air under ambient conditions prior to release into the atmosphere, right up to scrubbing streams of process gasses at high temperatures, high pressures, or in explosive environments to remove toxic or aggressive pollutants. The level of technical sophistication and bespoke engineering content is each project is specific to the clients' needs, with industrial applications typically demanding the highest processing technology.

The commercial driver leading clients to invest in ERG's systems might be a pressing requirement to comply with government regulations or with the emission limits set in an operating licence issued by an appropriate agency. For other clients, ERG's expertise is often sought to clean up gas streams that form an integral part of the client's production process. For example, in the green energy sector ERG's systems purify biogas or syngas that they have generated, so that the client's process runs more efficiently with lower pollution levels. In some cases, ERG's gas cleaning systems can even generate by-products, which become value added saleable side-streams.

Based in West Sussex, ERG has grown its business strongly over the years to build up a global sales network and client base.

An office in Jordan services ERG's business throughout the Middle East region, and is fully staffed with design engineers, project managers and local sales managers. A satellite sales office in Dubai completes the Middle East structure.

ERG (Plastic Fabrication) Ltd is the manufacturing division for the group and specialises in the high-quality custom fabrication of tanks, vessels, pipework and ducting from GRP and composite plastic materials, and which are used in the systems designed by ERG (Air Pollution Control). ERG (Plastic Fabrication) Ltd also welcomes commissions



direct from 3rd party customers. It has a vast arsenal of services to offer clients, and has specialist experience in manufacturing using a wide range of plastic materials including PVC, CPVC, Polypropylene, PVDF, and other specialty plastics for harsh environments such as ECTFE.

Finally, the group includes ERG APC Maintenance Ltd. This division's mission is to provide servicing and maintenance support to customers throughout the lifetime of their air pollution control system. Service can be provided under contract to include a routine preventative maintenance servicing schedule designed to maintain system performance. Alternatively, maintenance can be provided on an ad hoc basis as and when required.

All three-company divisions are now based in superb new purpose-built office and factory facilities in West Sussex, which were completed in 2021. Having all divisions on the

same site significantly enhances working efficiency, design quality, production quality, and production capacity.

Looking to the future, the ERG group will continue to develop its presence both within the UK and internationally in the renewable energy sector in the field of treating syngas and green hydrogen; and in automotive battery manufacture where its systems treat ammonia, acid gases and particulate pollution arising from the manufacturing process. In addition, ERG will continue to serve clients in the chemicals, pharmaceuticals and other process industries, as well as continue to build on its strong presence across the Middle East.

**For more information, please contact
ERG (Air Pollution Control) Ltd at:
T 01403 290 000
info@ergapc.co.uk
www.ergapc.co.uk**



ERG

ERG (Plastic Fabrication) Ltd

At ERG (Plastic Fabrication) Ltd, we specialise in the high quality custom fabrication of process industry vessels and associated components from GRP and composite plastic materials.

With almost 40 years experience of supplying tanks, scrubbers, filters, silos, vessels, piping and ducting, we are sure to be able to meet your requirements with high quality products at competitive prices.

Plastic Fabrication – Materials of Construction

Depending on your specific requirements we can fabricate from a wide range of common plastic and composite materials including:

- PVC – Poly Vinyl Chloride
- UPVC – Unplasticised Poly Vinyl Chloride
- PPVC – Plasticised Poly Vinyl Chloride
- PP – Poly Propylene
- HDPE – High-density polyethylene
- GRP – Glass Reinforced Plastic

**For more information, call 01403 291 000,
email info@ergpf.co.uk or visit www.ergpf.co.uk**



Clean Air

Clean air – The key to healthy employees and a healthy business

info@zehnder-cleanairsolutions.com
www.zehnder-cleanairsolutions.com

Emission Monitoring & Gas Manufacturing

Leaders in measurement of Nitrogen Oxides



For more information, please see below:
T +41 55 220 22 22
info@ecophysics.com
www.ecophysics.com

Breathe easy

with industrial air purification from Zehnder

In times where clean air is more important than ever, Zehnder's air cleaning solutions are a key factor in protecting your employees and equipment. They complement existing ventilation like LEV perfectly and flexibly to remove welding fumes, oil mist, dust and toxic gases.

And the best part: **Zehnder takes care of all filter changes and maintance.**

Get in touch to request your personal air cleaning offer.

Transform your business for the better

Industrial air purification has many advantages, such as:

- ✓ Healthy and safe employees
- ✓ Reduced cleaning costs (~70%)
- ✓ Less Maintenance
- ✓ Exceed customer expectations
- ✓ Improved product quality


Ben Simons, Head of Europe West:
+44 (0)7909 533878
info@zehnder-cleanairsolutions.com
www.zehnder-cleanairsolutions.com

     **#startwithcleanair**


zehnder

ECO PHYSICS nCLD "Facelift" boxed solutions

AL, AL², EL S, EL, EL²



Measurement of
NO • NO₂ • NO_x



The one- and two-channel chemiluminescence based NO_x analyzers of the nCLD "Facelift" box-solution analyzers detect NO, NO₂ and NO_x at concentrations ranging from 5ppm to 5,000ppm with minimal detection limits averaging from 0.4ppb to 0.5ppm. They hereby focus on two main application areas, Ambient Air (AL, <50ppm) and Emission/Process (EL, <500ppm; EL S <5,000ppm) monitoring. The one-channel nCLD AL, EL and EL S feature an external pump, while the two-channel nCLD AL² and EL² include an internal pump. The nCLD "Facelift" boxed solutions consist of five, fixed and pre-configured analyzers. The nCLD AL (Ambient Level) and EL S/EL include a standard NO/NO₂ measurement, with an optional NO₂ add-on, while AL² and EL² include, due to the two-channel set-up, a standard NO₂ detection. The slightly modified front panel has been equipped with an additional Power-button and a new internal PC. Additionally, are all nCLD-models capable of a remote power down/up including a failsafe feature.

Compact analyzer with external or integrated pump


"Toggle mode" NO₂-feature for One-Channel instruments

Intuitive graphical user interface

Internal data logger and status recorder

Remote operation/control, Power DOWN/UP

USB, HDMI, LAN/WLAN, Bluetooth, RS-232, Analog I/O



ECO PHYSICS AG · POB · CH-8635 DUERNTEN · TEL. +41 55 220 22 22 · FAX +41 55 220 22 55 · E-MAIL INFO@ECOPHYSICS.COM · WWW.ECOPHYSICS.COM

ECO PHYSICS AG · POB · CH-8635 DUERNTEN · TEL. +41 55 220 22 22 · FAX +41 55 220 22 55 · E-MAIL INFO@ECOPHYSICS.COM · WWW.ECOPHYSICS.COM

Leading the way in deep hole drilling

At Industrial Solutions, we take pride in showcasing the very best services provided by companies that provide a wealth of benefits for their industry. As such, in this issue we are proud to announce that we have selected UNISIG as our Deep Hole Drilling Specialists of 2022 and the recipient of our Industry Specialist Award.

Originally founded to provide deep hole drilling machines, accessories and related services to the US market, UNISIG is one of the largest producers of deep hole drilling machines, and

applications, to accommodate any specific requirement.

Since its establishment, UNISIG has built up a trusted reputation amongst its broad range of customers. As the leading producer of gun drilling and deep hole drilling machines, customers of UNISIG rely on its deep hole drilling technologies for the powerful, intuitive capabilities they offer.

Serving industries such as aerospace, energy, firearms, hydraulic cylinders, medical, military and defense, molds, oil and gas, and automotive, UNISIG



an industry leader in technology, innovation, support, and service. From small job shops looking to expand their capabilities, to large OEM's that need to drill millions of holes, UNISIG has the capabilities and the strong understanding of the deep hole drilling process, drilling tools and their

has a strong presence all over the world with installations in the Americas, Europe and Asia.

By offering a complete deep hole drilling solution that includes machines, tools and automation, customers will receive the upmost, highest quality service from engineers that hold extensive experience and expertise on deep hole drilling machines. Throughout the years, UNISIG's impressive drilling capabilities have propelled the company to the forefront of the industry offering a service that goes completely unrivalled amongst competitors. Setting the standards of the industry high when it comes its technological



advancements, UNISIG doesn't just manufacture deep hole drilling machines, it can also develop machines for other deep hole processes such as BTA, gun drilling, counterboring/reaming, pull boring, trepanning, skiving and roller burnishing, bottle boring, bottom forming and many more.



Pushing the limits of BTA drilling, with on and off-centre capabilities that offer intuitive operation, UNISIG manufactures high power BTA drilling machines and trepanning that enable BTA drilling of 25mm to 500mm up to 20m deep.

The B-Series machines handle an impressive range of on-centre BTA drilling and are the ideal solution for a majority of BTA range diameter deep hole drilling applications. This series uses BTA and related tools to produce centreline holes on parts up to 20m deep and are supported with training from UNISIG throughout the process.

The larger swing B-Series machines have virtually limitless capabilities, giving manufacturers the most in power

and dimension requirements. As part of the deep hole drilling system, this range combines rigid deep hole drilling with durable components and powerful drives with smart controls, allowing manufacturers to get the most out of their deep hole drilling investment.

It is evident that UNISIG is at the top of its game, manufacturing some of the highest-quality machines in the deep hole drilling industry. With its team of dedicated experts all pulling together, the company is really showing how anything is possible when you work together to solve problems, not create them.

For more information, please see below:
T +49 7125 9687590
info@unisig.de
www.unisig.com



UNISIG.COM



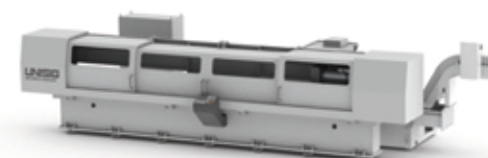
UNISIG

UNISIG TAKES YOUR GUNDRILLING PRODUCTION FURTHER

Gundrilling and BTA deep hole drilling for highly productive shops.

Whether your shop needs on-center or off-center holes, specialized job shop work or fully automated production, UNISIG has a deep hole drilling solution with the accuracy and performance you need.

Take your shop's production further - learn more at UNISIG.COM.



Machines • Tools • Automation

UNISIG machines, engineered and manufactured in the USA

UNISIG
DEEP HOLE DRILLING SYSTEMS

OUR GLOVE RANGE INCLUDES



ARC

Primarily developed for electrical ARC flash protection, our range of gloves offer many other benefits.



IMPACT

Designed to protect the user's hands from injury if their grip was to slip or tools that are being used fail.



CUT

A range of industrial cut resistant gloves that offer comfort to the user and cost effective solutions.



SPECIALITY

Our specialist range of gloves protect the user in various environments including cold and chemical-based.



GENERAL

The general handling glove range has been made from the best quality materials.



BASIC

A quality economy, sustainable range to compete in a market of own-brand price-fighter gloves.

 **MANOSUN**

THE FIRST POINT OF PROTECTION



Manosun Hand Protection

A manufacturer and designer of industrial safety products

- Manosun was created during the 2020 global pandemic when industry took an all-time low in productivity.
- Located in South Tyneside, the co-creator of the brand has over 16 years of industrial product development and 15 years within manufacturing including Health & Safety.
- Our aim is to target the huge UK manufacturing sectors as well as power generation and conservation and offer a quality service, product and development ability, not all solutions can be found off the shelf.
- We work with your traditional distribution supply chain so no need to work outside of any contractual obligations, you are free to develop and select your PPE requirements.
- Manosun Ltd is also a member of the BSiF a sign and seal of quality and products that fulfil all UK and EU requirements of test and design.

Talk to Manosun for all of your hand protection needs

Tel: 0191 300 8699

Email: admin@manosun.co.uk

Web: www.manosun.co.uk

 www.facebook.com/manosun

 www.linkedin.com/manosun



YOUR MATERIAL HANDLING PARTNER
FORKLIFT HIRE - FORKLIFT SALES
SERVICE & MAINTENANCE

We pride ourselves in supplying a prompt, reliable & helpful service

Over **40 years** of experience helps us deliver a first class service to our customers.



THE RIGHT SOLUTION FOR EVERY APPLICATION



RANGE OF SCRUBBERS AND SWEEPERS



PREPARED FOR ANYTHING



RANGE OF ACCESS EQUIPMENT TO COVER YOUR NEEDS



WE PRIDE OURSELVES IN SUPPLYING A PROMPT RELIABLE AND HELPFUL SERVICE
davison-forklift.co.uk T 01952 915060 sales@davison-forklift.co.uk



DIRECT HOIST GOES GREEN

Direct Hoist specialises in hire and sales of construction hoists, and is leading the field in environmental awareness

Environmental awareness isn't something you'd normally associate with the construction sector. Indeed, it's reckoned that a third of the UK's entire carbon emissions comes from the built environment.

Regardless of your views on climate change, it's impossible to ignore the impact of construction on the natural world. From plants and wildlife to noise and pollution, there's not an element on the planet that isn't affected by development projects.

So it's vital that the industry creates and maintains a sustainable outline for the future. And it's essential for our own survival - on an environmental and a financial scale - that we play our part in the battle to cut emissions.

Direct Hoist, an ever-expanding construction hoist hire and sales specialist, is rising to the top as a market leader in going green. Company founder Rob Wilson says, "Due to the Government's intention to drastically reduce the UK's emissions - especially from motor vehicles and businesses - Direct Hoist is moving forward with demands for companies to decrease their carbon footprint down to zero emissions."

Rob's approach is to take a fresh look at Direct Hoist's operations with an environmental eye. The basics were covered easily: long-life, low-energy LED lighting was fitted to the firm's premises

to replace inefficient equipment; recycling is rigorously monitored and separated to minimise general waste; scrap materials are saved up and weighed in.

Direct Hoist has slashed stationery usage, implementing paper-free hand-overs via phone apps, and is rapidly moving towards paperless offices. Sustainability passes down the chain, so Direct Hoist favours suppliers that are either local (to cut transportation) or offer green credentials.

Direct Hoist already runs its fleet of diesel-powered vans on HVO (hydrotreated vegetable oil) fuel, which is 100 per cent renewable (BS EN 15940 standard), offers a 90 per cent reduction in CO₂, and can be stored for extensive periods in a tank on-site - meaning Direct Hoist's drivers don't need to divert to fuel stations, making each trip more economical.

Rob says, "Electric vans don't yet offer the range we need, so HVO is a good alternative. Compared with white or red diesel, HVO fuels have benefits to health and the environment. Air pollution is drastically reduced, and

it's much safer if there's an accidental spillage - HVO biodegrades quickly, whereas regular diesel will remain slippery and harmful to the ecosystem for years."

Direct Hoist's switch away from fossil fuels includes a hire fleet of generators that will run on HVO when powering hoists on sites without connection to mains electricity.

Of course, Direct Hoist has for years supplied electrically-powered construction hoists instead of old-fashioned engine-driven devices. Rob says, "They use a 110-, 240- or 415-volt supply, depending on the lifting capacity and size of the hoist platform required, so there are no carbon (CO₂), nitrogen oxide (NO_x) or carbon monoxide (CO) emissions here."

Direct Hoist is also investing in lithium-ion battery-powered lifts, which can carry 120kg up to heights of 10m, controlled wirelessly by a smart-phone app. They're ideal for transportation and installation of solar panels.

Most importantly, the inclusion of a hoist on any construction site has an added environmental benefit due to its manpower-saving efficiency. Construction hoists dramatically reduce project timescales - the speed and ability of a lifting platform to take tools and materials up

multiple storeys can knock weeks off a large scheme - thereby minimising workers' journeys to and from site.

"We're on target to reach net zero greenhouse has emissions long before the Government's policy," says Rob. "Direct Hoist is committed to going green, and we're taking a direct route towards sustainability." ■

■ For more information, visit: www.directhoist.co.uk

BATTERY LIFT LADDER



**DIRECT
HOIST**

DIRECTHOIST.CO.UK

▲ HIRE ▲ SALES ▲ SERVICING ▲ PARTS ▲ REPAIRS

SUPPLIERS
OF

GEDA

&

Electroelze

01724 781647 ▲ 0113 819 9997 ▲ 0191 260 0543 ▲ 0207 199 8278

The cutting edge of machine knives technology

CAMB Machine Knives has built an enviable reputation for high quality machine knives. With over 30 years of experience, CAMB Machine Knives supplies to companies across the world, with an established network of agents in Spain, Holland, France, New Zealand, South Africa, Australia and Israel, as well as its UK headquarters.

Currently, CAMB Machine Knives supplies and exports its knives to over 20 countries



worldwide. Because the company deals with several carrier and freight companies, it ensures it can always get the most competitive prices and best carriage option to its customers' destination.

The company's range of blades includes circular knives, top dished knives, bottom knives, toothed knives, straight knives, anvils, tray form blades, razor blades, shear blades, granulator blades, carpet knives, tobacco knives and confectionary knives.



The range of circular knives is ideal for a wide range of industries, including packaging and rubber. Furthermore, CAMB Machine Knives' range of poultry processing blades cover all the main



machines used in the industry, including Stork, Meyn, Systemate, Foodmate, Linco, and many special sizes made to order.

As well as supplying new blades, CAMB Machine Knives can provide a full regrind/re-sharpening service on many of the knives it supplies. This can be arranged on a weekly basis, or booked as and when it is required. This is ideal for increasing the life of circular, straight, toothed and special blades, as well as increasing the efficiency of the machine.



Regrinding/re-sharpening is the ideal way to bring your knives back to an as new condition, and is considerably cheaper than purchasing a brand new set of knives. CAMB Machine Knives can collect and deliver anywhere in the UK within 24 hours, offering competitive shipping rates and a quick turnaround. What's more, if a job is urgent, in some cases the company can regrind the same day.

With its comprehensive product range and excellent customer service, CAMB Machine Knives really is a cut above the rest.

If you would like to find out more information, head to the website or get in touch using the contact details below.

T 01454 322178
sales@Camb-knives.co.uk
www.Camb-knives.co.uk



CAMB MACHINE KNIVES

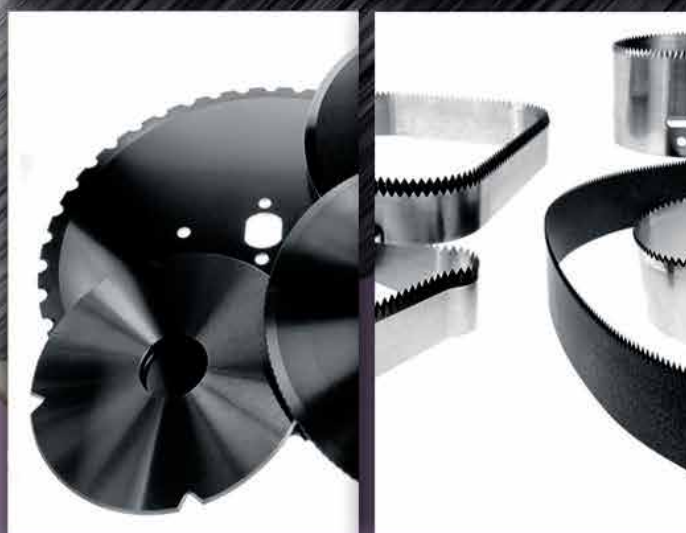
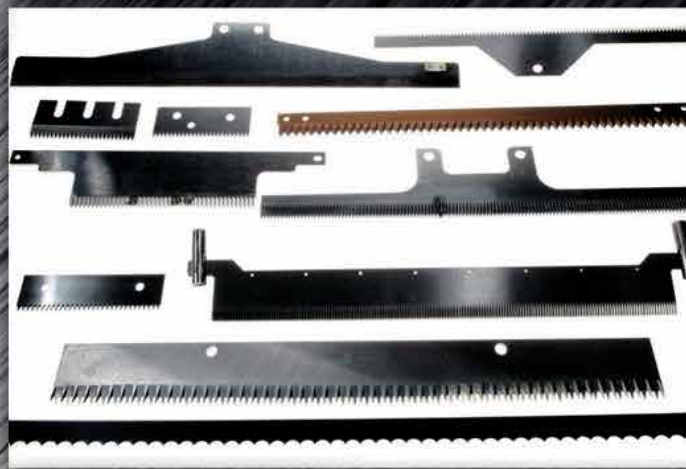
"A Cut Above the Rest"

Our range includes many types of blades, but not limited to:

- ANVIL
- BAGGING KNIVES
- BOTTOM KNIVES
- CARPET KNIVES
- CIRCULAR KNIVES
- CONFECTIONERY KNIVES
- GRANULATOR KNIVES
- POULTRY PROCESSING KNIVES
- POULTRY UTILITY BLADES
- STRAIGHT KNIVES
- TOBACCO KNIVES
- TOOTHED KNIVES
- TOP DISHED KNIVES
- TRAY FORM KNIVES
- COFFEE GRINDER BLADES (INSTANT COFFEE)

We have been supplying our knives worldwide for over 30 years.

We deal with carrier and freight companies so we always remain competitive for price on any destination.



CAMB MACHINE KNIVES INTERNATIONAL LTD

Tel: 01454 322178 | Fax: 01454 321172

Email: sales@Camb-knives.co.uk

www.Camb-knives.co.uk

MANUFACTURERS AND DISTRIBUTORS OF MACHINE KNIVES TO ALL INDUSTRIES



BUILDING UPDATE

ISSUE: 661 January | www.solutionspublishing.co.uk



Please visit: www.bulmerbrickandtile.co.uk
T 01787 269232
bbt@bulmerbrickandtile.co.uk

Traditional brick production specialist

The Bulmer Brick and Tile Company, based in Suffolk, is a family-run business established in 1936. With over 80 years' experience in the industry, the English company truly is a master of its craft.

The Bulmer Brick and Tile Company is renowned for its traditional handmade bricks which, fired in a down draught kiln, have a distinctive finish that blends well with the original London clays bricks. The beauty of the Suffolk company's bricks lies in their traditional production method. The bricks are made from clay dug from the same clay seam used since Tudor times. The wealth of experience amassed by the company coupled with their respect for the process is what separates The Bulmer Brick and Tile Company from the competition.

Having produced bricks for reputable clients such as the National Trust, English Heritage and Historic Royal Palaces, the company is able to lend its services to both private and commercial developments. Its facings and specials can be made with almost any texture; with 150 different sizes of facings and a range of over 5,000 special shapes, including all standard plinths, squints and copings and extends to purpose made chimney bricks, terracotta,



mullions, jambs, floor bricks, paviours, decorative plaques, garden edgings and a full range of rubbing blocks.

Aside from offering a wide range of clay brick solutions, The Bulmer Brick and Tile Company further offers a select number of additional materials. It is a stockist of Singleton Birch Natural Hydraulic Limes and Lime Putty, available in a range of strengths – NHL2, NHL3.5, and NHL5 – and sold in 25kg bags or 1 tonne bulk bags. Lime has proven to be the material of choice when laying the brick specialist's bricks and especially in the case of conservation work, with its natural strength and tendency to give 'movement' in the construction process favourable.

T 01787 269232
www.bulmerbrickandtile.co.uk



Timbabil
see them on.....I

Modcon Cabins
see them on.....II

Kedel
see them on.....IV

Delta Tower Cranes
see them on.....V

Blue Run Ltd
see them on.....VII

RapidSpec
see them on.....VIII

LS Products
see them on.....X

Tuff Waterproofing
see them on.....XI

Vandecasteele
see them on.....XII



MAKE THE SMART CHOICE WITH TIMBABUILD STRUCTURES

Timbabil Structures offer, a full spectrum of timber frame construction from design brief to completion. Whether it be the design of a one-off shelf, or a multiple unit site, Timbabil Structures can offer the complete package.

- FULLY TIME SERVED WORKFORCE WITH OVER 30 YEARS EXPERIENCE
- WE BELIEVE IN QUALITY OF PRODUCT & SERVICE, NOT QUANTITY
- IN-HOUSE DESIGN ENGINEERS & FABRICATION, EVERYTHING IS MADE BY HAND & PORTABLE TOOLS
- ALL OPERATIVES ARE TIME SERVED, INSURED & VETTED



Why not visit www.timbabilstructures.co.uk

Please contact 07512 148792 or email info@timbabilstructures.co.uk @timbabilstructures



Portable Buildings

ModCon Cabin Trader Ltd

ModCon Cabin Trader was formed in 2017 by Alan Willetts of whom has 25 years experience of working for some major manufacturers in the Modular & Portable Building Industry.

ModCon Cabins as it is also known manufactures and supplies Steel Anti Vandal Portable Cabins, Containers, Modular Buildings and all site ancillary items associated with the Portable Building Industry. Please visit: www.modconcabins.co.uk



Items such as Portable Offices, Canteens, Toilet units, Drying units, Storage Containers, Chemstores, Smoking Shelters, Effluent Tanks, Staircases are regular and repeat produced items that we manufacture for our clients.

Based in Gloucestershire in the South West we are logistically nicely placed around all the major motorway networks for ease of transportation.

Our workforce are all very skilled and experienced fabricators of whom have many years experience working within our industry and so know the expectancy of our customers requirements so you can be sure that if you approach ModCon Cabins to

undertake your work you are in very good hands!

Being that all items produced are mostly built on a jig and to customers own specification we are open to undertaking bespoke enquiries too so please feel free

to engage with us here at ModCon Cabins even if you have a rather random enquiry for certain products.

Why not also take a look at ModCon Cabin Traders other side of the business which is an Auction/Resale website that allows all and

sundry to utilise the site to sell new & used Portable Building products which operates very similar to a well-known auction/resale site we are all familiar with, however only for products relating to our industry.

www.modconcabintrader.com




ModConCabins
Manufacturer of Modular, Containers & Cabins

Steel AV Cabins • Smoking Shelters • Chemical Stores & Storage Units
Staircases & Steps • Effluent Tanks • Water Bowsers • Turnstiles




















MODCONCABINTRADER
www.modconcabintrader.com

INTRODUCING

ModCon Cabin Trader, the Modular, Portable Building & Plant Industry related, Resale/Auction website!

alan@modconcabintrader.com +44) 0333 404 8822 07842 318869

Steel Buildings



STEEL BUILDING SOLUTIONS

+ SINGLE SKIN + COMPOSITE + ROLLER DOORS + WINDOWS +



INDUSTRIAL



AGRICULTURAL



DOMESTIC

+ SKYLIGHTS + PERSONNEL DOORS + INSTALLATION OPTIONS +

GET A FREE ON-LINE QUOTE AT

WWW.CSBUILDINGS.CO.UK

OR CONTACT US ON

01302 301402

INFO@CSBUILDINGS.CO.UK



The South West's Number One Timber Building Company – MAC Cabins

MAC Cabins Limited is a fast-growing Timber Building company based in Okehampton, Devon, with over 30 years' experience in the construction industry. Proud to be the providers of one of the largest selections of; Timber Buildings, Log Cabins, Leisure/Holiday Cabins & Glamping Pods, in the heart of the South West of England.

To compliment the extensive ranges of timber buildings, MAC Cabins also offers a vast variety of other Timber Frame & Modular Frame options,



providing one of the widest selections of timber building options, within the market-sector.

For all timber frame styles, MAC Cabins works with self-build and custom-build projects, where the initial design has already been completed with architects. We help to guide small to medium-sized developers, on sites of 1-30 plots, to



identify the best way to convert vision into reality.

MAC Cabins continues to expand its vast portfolio of designs and build options, allowing you to select the perfect combination of style, size and price, confident you will find the perfect selection to meet your growing demands.

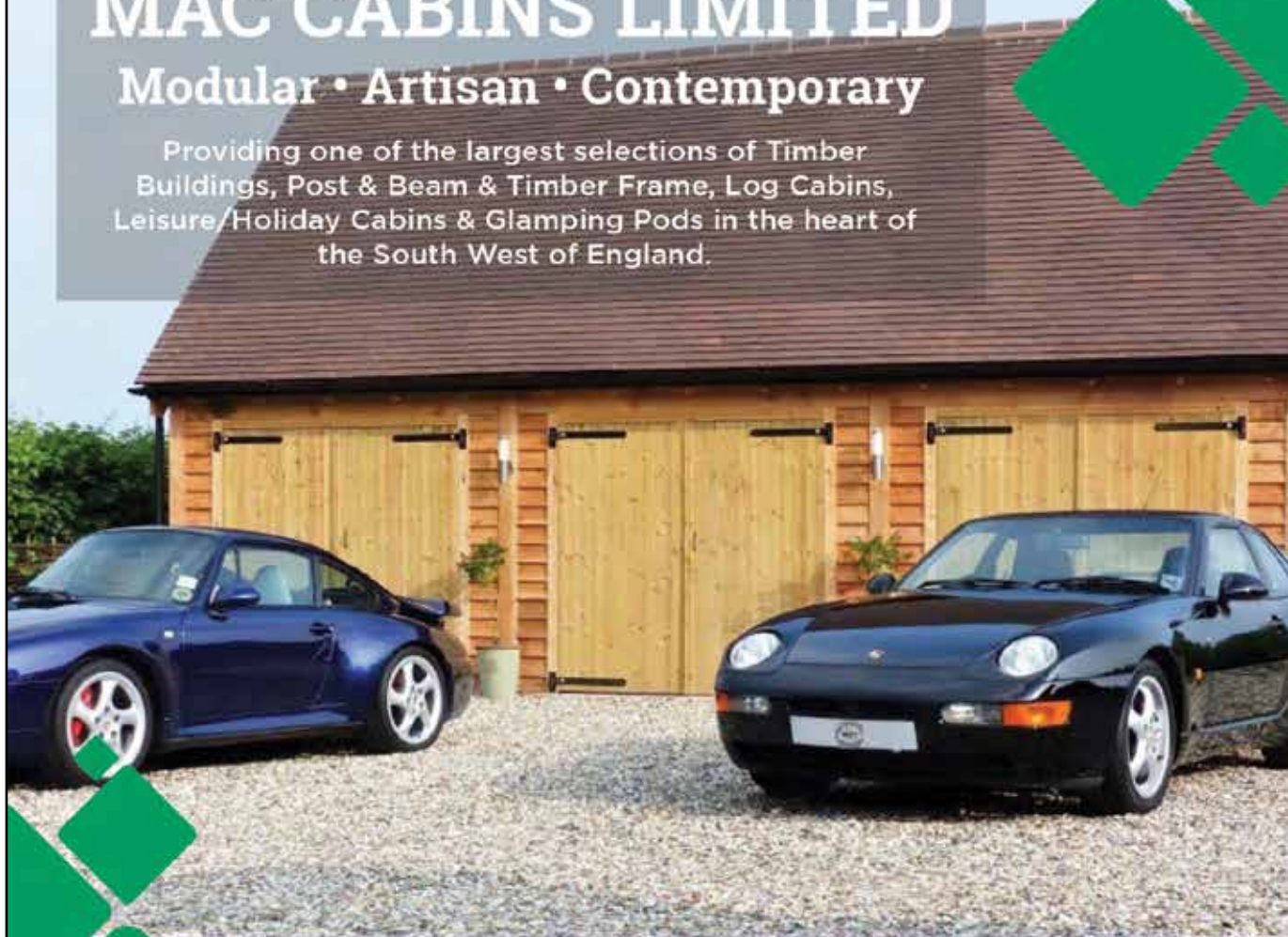
With every building, you will receive a structure that has a higher standard specification than most other comparable products.

Contact
T 0800 999 1564
help@maccabins.co.uk
www.maccabins.co.uk

MAC CABINS LIMITED

Modular • Artisan • Contemporary

Providing one of the largest selections of Timber Buildings, Post & Beam & Timber Frame, Log Cabins, Leisure/Holiday Cabins & Glamping Pods in the heart of the South West of England.



MAC CABINS LTD

Bringing you the widest selection of:

Glamping Pods, Log Cabins, Timber Lodges, Traditional Post & Beam and Timber Frame Buildings throughout the South West of England.

All our cabins, pods and timber building ranges are extensive in design, layout and configuration and offer many different styles of accommodation.



0800 999 1564

maccabins.co.uk



MAC Cabins actively supports & promotes the use of Timber as the most environmentally sustainable material for the construction industry.

Environmentally friendly plastic lumber

At Building Update, we are proud to announce that we have selected Kedel as the recipient of our Commitment to Excellence Award for its ongoing efforts in producing eco-friendly plastic products for a more sustainable future.

Kedel is a family business founded on ethical and ecologically sound principles. Dedicated to making sustainable living attractive, Kedel believe that by incorporating sustainable recycled plastic products into personal and working environments, it can create a happier, healthier and infinitely more sustainable future for generations to come.

Established by three brothers, Kieran, Dermot and Lewis Walch, Kedel is based in Burnley and supplies nationwide. We spoke to Dermot who explained what commitment to excellence means to them and how they feel they achieve it. "Commitment to excellence is an attitude towards work. You're only as good as your weakest link, so we try to give our staff an autonomous responsibility around servicing our customers and through this we are achieving service excellence."



Because of this, people can make quicker decisions and our customers end up 100% satisfied much quicker. Eco-Friendly Plastic is what we do. Not many people believe plastic can be green but it can. We manufacture plastic wood made from waste polystyrene, and are also suppliers of many other types of recycled plastic profiles from other manufacturers, which allows our customers to keep their carbon footprint down. We maintain excellence throughout our business through our sustainable products, sustainable supply chain and sustainable manufacturing policy."

Winners of the Feefo Trusted Service Award, Kedel's range of recycled plastic lumber reflects the future of the construction industry. From plastic fencing pales and edging board pegs to round posts, boards and



planks, tongue & groove planks, decking, and so much more, Kedel's extensive product range comes with a number of benefits. Of course, the largest advantage of plastic lumber in general is that it does not rot, absorb water and is highly resistant to damage. This much more versatile material means it has a life longevity to be placed in all weathers and climates making it a perfect material for use in construction, leisure, education, gardens and any water applications.

Some could claim that plastic wood is bad for the environment, however, Kedel would argue that yes, initially the cost of plastic wood may be higher but the outcome is that you have a product that will last a lifetime due to its extended longevity and zero maintenance properties. To add to this, Kedel only uses recycled plastic that would otherwise go to landfill, therefore, its contribution towards a circular economy is something to be highly commended.

Moving forward, Dermot explained what the future holds for the company. "We are about to increase the working hours of our extrusion plant to be operating 24 hours



a day 5 days a week which will double our production time, and to support this we are recruiting more extruder operators. In the future, we plan to build a

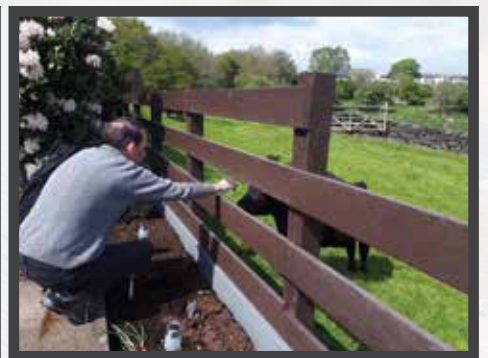
network of resellers around the UK, as the current cost of transport is at an all-time high so we are looking at ways around this for better business practice and to allow for an eco-friendlier way of working."

In closing, we asked Dermot how he felt receiving our award, he responded, "We are thrilled. It shows we are doing all the right things and going in the right direction and we will endeavour to live up to it."

For more information, please see below:
T 01282 861325
www.kedel.co.uk



The Zero Maintenance Alternative to Wood



Recycled Plastic

- 100% recycled and recyclable
- Impervious to fungi, algae, insects
- Never rots, splinters or cracks
- Graffiti resistant
- UV Protected
- Eco-friendly and low carbon
- 100% maintenance free
- Lasts a lifetime



sales@kedel.co.uk | www.kedel.co.uk | 01282 861325



Delta Tower Cranes Ltd specialise in the Hire & Sales of Luffing & Trolley Jib Tower Cranes



Established over 20 years ago by Richard Baldwin of Baldwin Crane Hire, Delta Tower Cranes Ltd is a one stop shop for the Hire, and Sales of Luffing Jib, Trolley Jib, & Pedestrian Operated Tower Cranes.

The companies head office is in Langley near Slough and they have depots in Theale, Reading and Newport in South Wales. From these bases Managing Director and Technical Sales Manager Tony Ferris and the ten staff service all companies requiring its products.

Tony Ferris with his long term experience in the Tower Crane Industry has been directly involved in the establishment of Delta Tower Cranes Ltd with Richard Baldwin from day one, and he commented, "While we are a fairly small company in the industry, we do have a fleet of up to 36 Luffing Jib & Trolley Jib Tower Cranes available for hire. We pride ourselves in providing a personal and flexible service, and I work directly with customers from the day that they contact us to ensure that we supply them with a suitable Tower Cranes and other services at very competitive rates. We are there right throughout the project to talk to and guide customers and field any issues that they may have."



Proof of the commitment the company has to its customers is evident in the investment it has made in a comprehensive fleet of the latest Tower Cranes from leading manufacturers including Saez Cranes, as well as the latest state of the art equipment including Electronic Torque Equipment, AMCS Electronic Zoning/Anti Collision Systems and IKAR Rescue Systems.

Delta Tower Cranes Ltd can supply a complete range of Hydraulic Luffing Jib Tower Cranes, including the innovative Saez SLH series of Flat Top Hydraulic Luffing Jib Tower Cranes which are ideal for sites with restricted air space, as they have vastly superior out of service radius capabilities when compared with conventional wire rope Luffing Jib Tower Cranes. These cranes are the perfect solution for compact construction sites where air space is at a premium, or where they are located next to Network Rail Boundaries. In addition Delta Tower Cranes can supply Saez TLS series Flat Top Trolley Jib Tower Cranes, as well as Pedestrian Operated Tower Cranes.

The company hires its cranes out mainly to construction companies and can provide a complete package if required, including Crane Operators, a comprehensive range of Lifting Accessories, Generators with Bunded Fuel Tanks, and AMCS Electronic



- Jost JTL 208.12
- Raimondi LR60
- Terex Peiner SN86/1
- Terex Comedil CTL140-8
- Saez SL 320
- Saez SLH205
- Jost JL256.16
- Potain MR165-G12

Trolley Jib Cranes include:

- TLS 65 4-8 Ton
- TLS 70-10
- Terex Comedil CTT121
- Terex Comedil CTT181
- Terex Comedil CTT231

Tony concluded, "We would welcome the opportunity of sharing with customers the benefit of our many years of experience in the Tower Crane Hire Industry by offering you technical advice and very competitive quotations for all your Tower Crane requirements."

Contact Tony Ferris,
Technical Sales & Enquiries,
T 01753 542418
M 07799 788150
Technical Sales & Hire Enquiries
deltatowercranes@gmail.com
General Enquiries & Administration
admin@deltatowercranes.com
www.deltatowercranes.com

Zoning and Anti-Collision Systems. Tony continued, "I have been in the Tower Crane industry for over 45 years and myself and our very experienced staff take great pride in delivering an efficient and personal service to all our customers. Most of our work is repeat business in addition to website enquiries. Companies return to us time and again as they know that they are guaranteed personal and excellent service from our staff throughout every step of their project."

Delta Tower Cranes Ltd insists upon safety, reliability, first class service and efficiency and these are its core values and priorities. The highly skilled and experienced personnel are constantly undergoing training which enables the company to ensure that it provides its customers with a professional and 'safety first' service.

Delta Tower Cranes Ltd can also offer to its customers the benefit of its in house Auto CAD Design facilities, as well as arranging road closures, traffic management, and the hire of skips, brick forks, block grabs and other ancillary lifting equipment.

The following is a list of tower cranes in the Delta fleet, all specifications for each crane are available on the website (www.deltatowercranes.com)

Luffing Jib Tower Cranes include:

- Jost JTL 108.6
- Jost JTL 158.6



Make your project possible

DCON Safety Consultants Limited offers leading health and safety consultancy and construction statute advice services. The company prioritises and specialises in the highest levels of informed and intelligent advice, senior project resource allocation and compliance assurance. Informed by industry expertise, DCON Safety Consultants Limited knows that every project has potential risks, no matter what its potential benefits, so its team of highly



experienced construction professionals helps to ensure clients' statutory conformity.

Upon gaining understanding of the specific needs, goals and desires of each client and their project, DCON Safety Consultants Limited is dedicated to implementing a design and construction management plan that will meet or exceed these requirements. And, DCON Safety Consultants Limited ensures that there is honesty, integrity, trust and professionalism underpinning every project.



Moreover, the company's services are centred on three delivery principles:

- **Maximising Quality:** The company implements proven health, safety and wellbeing strategies to help clients achieve high quality and cost-effective work commensurate with the design of their projects.
- **Minimising Risk:** The company effectively manages design and delivery risk on projects to match each client's desired risk level profile.
- **Managing Compliance:** The company relies on its extensive background working on a wide variety of projects to assist clients in developing, monitoring and maintaining compliance performance.

This excellent service would not be possible without the leadership of Diarmuid Condon, a construction industry leader who brings unique perspectives to encourage, support and mentor the abilities of his colleagues. As a construction professional with a surveying background and experience spanning two decades, Diarmuid is emblematic of DCON Safety Consultants Limited's commitment to providing outstanding services to clients.

Diarmuid has contributed his invaluable expertise to over 400 projects over 20 years, with a client list including public sector departments, corporate owners, real estate developers, main contractors, design professionals and infrastructural bodies. With this incredible portfolio, Diarmuid is helping DCON Safety Consultants Limited to become a leader in health and safety consultancy across the construction industry.

Key to DCON Safety Consultants Limited's services is working as a Project Supervisor for the Design Process (PSDP) in various sectors across the Irish construction market.

No project is too simple or too complex for the company's PSDP consultants, all of whom are construction professionals with an average of 20 years' experience in the built environment. The ability to maximise this knowledge and skillset means DCON Safety Consultants Limited can generate distinctive and innovative ideas from traditional PSDP service inputs and outputs.

Additionally, DCON Safety Consultants Limited offers planning compliance assurance services. The ability to strategically support a positive planning decision is exclusive to the company. Its Draft Construction Management Plans (DCMP) inform the overall planning, coordination and control of a project from the beginning of construction to completion. The DCMP also safeguards the obligation placed upon a client to produce a safe, functional and financially viable project.

DCON Safety Consultants Limited also provides its main contractor clients with intelligent, practical, and reasonable physical site safety advice to support compliance and good practice adherence. Behavioural safety outcomes inform how the company approaches each solution with the contractor and their supply chain, identifying opportunities for improvement.



To complement this, DCON Safety Consultants Limited can also help with clients' health and safety strategy. Its holistic and integrated approach can help unlock substantial benefits for clients by providing a structured, objective and SMART framework for full optimisation through the creation of an environment that embraces health, safety and wellbeing.

This means DCON Safety Consultants Limited helps clients to improve their health, safety and environmental performance; enhance staff satisfaction thanks to improved performance; improve risk management and corporate governance with a clear audit trail; gain confidence from long-term planning, better sustainability and performance;



and improve overall corporate reputation, including greater staff satisfaction and a more efficient procurement and supply chain. Finally, DCON Safety Consultants Limited can offer a safety expert witness service, which is headed by Diarmuid himself. He has extensively supported safety-related matters, and is a certified and competent safety professional who will work with clients to identify exactly what kind of safety expert is needed. Then, he will use an extensive network of contacts to recruit the right person to protect clients' interests.

DCON Safety Consultants Limited's fantastic service offering and proven track record

of offering leading health and safety consultancy services makes the company a worthy winner of our Commitment to Excellence award. Such achievements are proof that DCON Safety Consultants Limited is well-placed to help ensure your safety, health and wellbeing and make your project possible.

If you are interested in finding out more information on DCON Safety Consultants Limited's full range of excellent services, head to the website or get in touch directly using the contact details below.

Contact
T +353 (0)1 611 1556
info@dconsafety.com
www.dconsafety.com

Quality, bespoke joinery since 1991

Joinery experts, Bluerun Ltd, was originally established by the current Managing Director, John Jones, and Peter Clayden back in 1991. Peter Clayden resigned a few years later and the company is now owned by John's family – his wife Doreen, son Jeremy, and daughter Dee Newman, and Dee took over the reins in December 2019, when John semi-retired.

Based in Wimbish, near Saffron Walden in Essex, Bluerun manufactures quality, bespoke joinery items, and everything is made to order, nothing is 'off the shelf.' Dee commented, "We manufacture items for the commercial market from door and window packers,



to shopfronts, reception desks, mainframes, pub doors, and years ago we even made a trebuchet for Stansted Mountfitchet castle!"

In the 7,000 sq. ft. factory, Bluerun can produce work using both hard or softwoods, and veneered and painted panels. It has a modern spray paint and lacquer facility, enabling products to leave the factory in a fully finished state.

For domestic clients, Bluerun manufactures everything from windowboards to windows, thresholds to doors, shelving, wardrobes, bi-fold doors, French doors,

staircases, indeed most things in a property that are made of timber. It has even made a child's Wendy house and a mansion for cats!

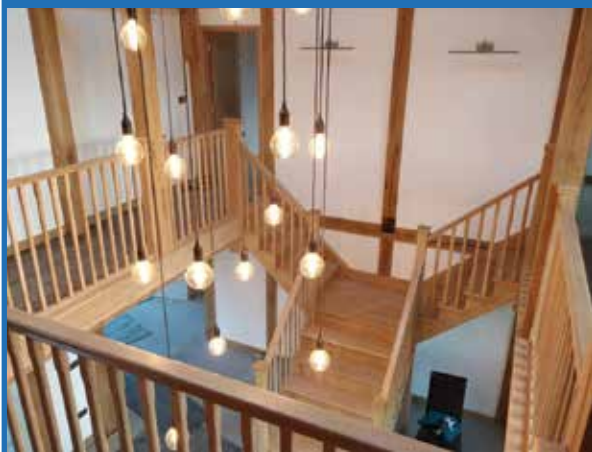
Bluerun will take on projects of almost any size, Dee continued, "The only size limit is whether a finished item can be removed through our workshop doors! Staircases for example, would be made in a kit format, for ease of delivery and installation. We use couriers for deliveries, and they have access to all sizes of vans and lorries." The only thing that is sometimes out of range are installations due to a small workforce, but Dee keeps a list of recommended installers for anything, which is manufactured.



Bluerun Limited

quality bespoke joinery since 1991

QUALITY, CUSTOM MADE JOINERY



In a crowded marketplace, Bluerun works very hard to be at the forefront of the industry. It is a supplier to Dovista for items such as packers and mainframes, and the company corporate branding is on its vans, emails, and social media presence, along with promotional items, and this has helped recognition and growth of the company in recent years.



Dee remarked, "We are still working old school, and everything is designed using pencil and paper with a dash of imagination. We don't use CAD or CNC, and most items are completed using hand tools for the finishing touches. A lot of love and care is included within our work, and this has really helped our customer base to grow."

So whether you are looking for a one-off custom made gate, a staircase, or a production run of doors and windows for a new housing development, or a new interior for your pub, restaurant or office, Bluerun can deliver exactly what you are looking for.

For more information, please see below:
T 01799 599995
dee@bluerunltd.co.uk
www.bluerunltd.co.uk

Bluerun Ltd have been manufacturing top quality, purpose made joinery for the domestic and commercial markets for over 30 years.

Contact us to discuss your requirements.



Please visit our website: www.bluerunltd.co.uk
Tel: **01799 599995** | Email: dee@bluerunltd.co.uk
f [bluerunltd](#) @ [bluerun_joinery](#)

Revolutionary door scheduling software opens doors to productivity

Industrial Solutions are delighted to announce that RapidSpec is the recipient of our Software Choice Award for 2022.

Managing Director, Derek Brown has devoted twenty years to perfecting exceptional automation software for fire door specification and the manufacturing industry. The smart system offers instant door specification designs using all components including hinges, locks, glass and beading fittings etc. Once a fire rating has been chosen, the software won't allow selection of any item that is not compliant with that fire rating.

"We supply software for fire door specifiers for building contractors, architects and fire door manufacturers. The software is used for specification, quotations and automatic elevation drawings. On the manufacturing side, we also produce bills of materials and this allows for reduced sales and administrative costs by 20-25%, increased sales through quotation presentation, error elimination and making door specification easy, quick and accurate."

Customers such as Eugene Cornally Managing Director of

Door Kits Ltd was delighted with the speed and efficiency of the software design, "We've only used RapidSpec for three months so far and already it's a godsend. Two of us in the office recently quoted for a €70,000 project in one and a half hours. This would normally have taken at least a day."

Derek says, "New users need a maximum of two hour training. Often when we give this training, you can see in operator's eyes that they just want us to go away so that they can have a go. That is something very rare, most people hate software."

The company is based at Unit 5 BVIC, Blythe Valley Business Park, Solihull in the West Midlands.

To see RapidSpec in action, visit the W Trade Exhibition from 24th-27th September 2023 at the NEC Birmingham.

For a free two-week trial and for further information, please contact Carol, Robin, Ian or Derek on: 0121 506 9020 or complete the contact form on the website: www.rapidspec.co.uk



L-R: Ian Selby, IT Director, Derek Brown, Managing Director holding the award & Carol Cole, Marketing Director

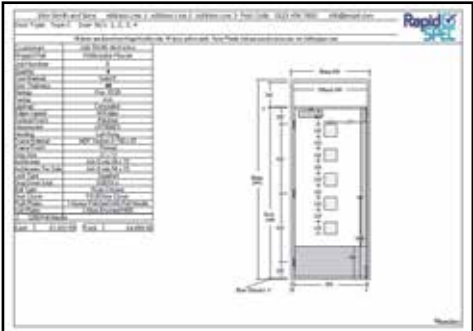
RapidSpec is offered on a monthly lease plan so there are no upfront costs at all. Installation is free, Training is free and support is included with the lease cost. That makes RapidSpec financially risk free. Derek says that they can only do this because "We have a great product."



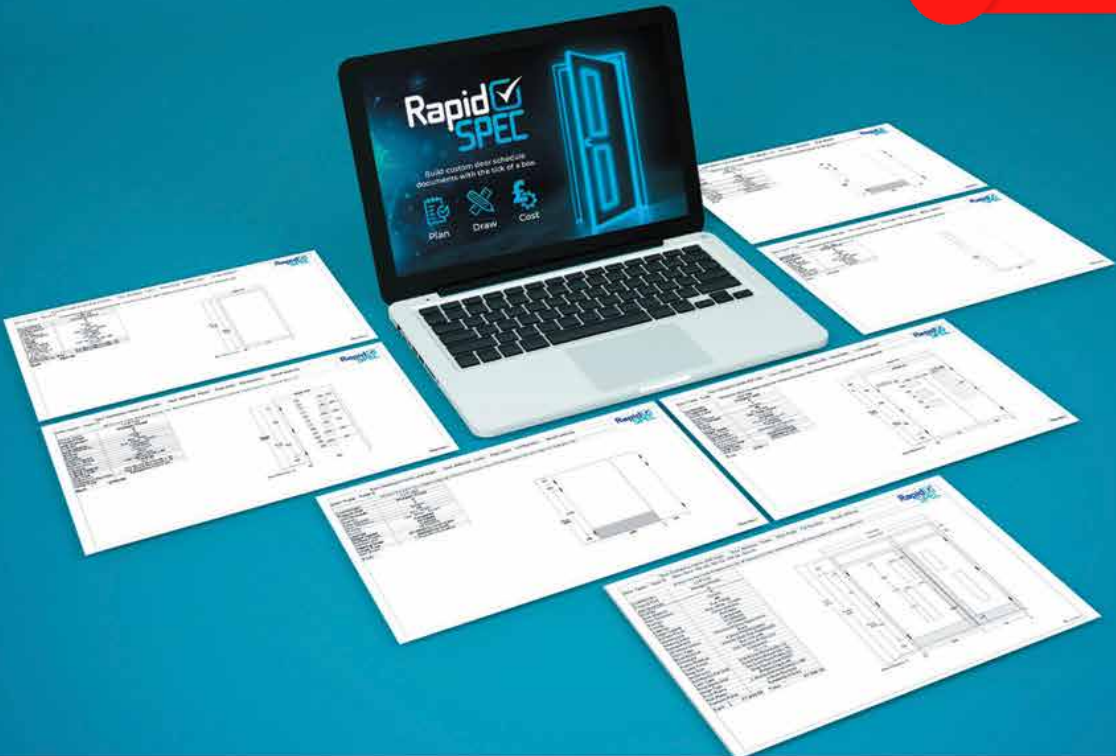
Following the Grenfell Fire tragedy in 2017, the subsequent Hackitt Review makes fire door specifications even more stringent, to prevent any further tragedies on that scale. The Building Safety Act requires industry-wide compliance on fire safety and RapidSpec offers the building and construction industry a foolproof solution, as Derek illustrates, "RapidSpec will eliminate errors, it will effect a considerable reduction in administration cost and it will give customers an edge when it comes to quotation presentation but its primary function is to increase profit. So much so that if a customer's return on investment is not at least 3 times the cost of the software, we say you probably don't need it."

"The software has huge capacity. One of our customers has been using RapidSpec for only 4 years and has used less than 1GB of storage for 9,500 projects with nearly 100,000 drawings for over 300,000 doors. An astonishing 115 people can view the robust system at any one time, with capacity for 45 different edits simultaneously. Despite this huge storage capacity, when a customer calls with a question you can find any individual door from any project in 15 seconds so any user can answer most questions or make changes immediately. How's that for customer service?"

Derek explains the company's inception, "Product development started in 1998 when I was asked to solve a productivity problem for a fire door manufacturer in the Midlands. Surprisingly they had sold twice their maximum output for each of the following three months. Productivity per employee had to be increased by at least 100% and it was obvious that the lack of clear shop floor information was a major contributor to poor output and the amount of re-work that had to be eliminated. Poor quality information was a serious issue causing 5-10 % of scrapped door sets every month. I had to create a very simple version of RapidSpec to eliminate these errors and meet the production target. I also had to make changes to the systems and procedures of the company resulting in successful completion of all of the work on time. So our software was not the sole reason for this result but it made such a huge difference that I realised that there would be a market for this type of product."



Contact: 0121 506 9020
www.rapidspec.co.uk



CONTACT US NOW FOR A FREE QUOTATION OR DEMONSTRATION



RapidSpec will give you 20 – 30% more quotations from your estimators and at the same time make their work easier and much less stressful.



The savings from RapidSpec's error free automatic bill of materials alone is normally enough to pay for the software.



Take the worry and stress out of scheduling. In the background, as you select items, RapidSpec is making hundreds of checks for you. Less double checking = higher output!

Quality hinges since 1790

Gold & Wassall Hinges has established itself at the forefront of the industry since its inception over 200 years ago. With its manufacturing facilities situated in Tamworth in Staffordshire, Gold & Wassall Hinges provides an impressive range of services for design, production and manufacture of hinges, all produced in house and distributed throughout the whole of the UK. Boasting an enviable reputation within the industry, Gold & Wassall Hinges has positioned itself firmly as the UK's number one manufacturer of hinges.

Gold & Wassall Hinges has provided its services to



various customers throughout its years in operation and serviced customers from construction to engineering companies. With a proven track record of quality, reliability and durability, Gold & Wassall Hinges ensures it maintains complete control over the design and high quality of its goods.

Customer service is an integral focus for Gold & Wassall Hinges and the company ensures it provides a first class turnkey service, from initial enquiry to delivery and aftersales care. With a team of expert sales reps,



QUALITY HINGES FOR OVER 200 YEARS

Gold & Wassall have been manufacturing hinges for over two centuries, so it's safe to say we know what we're doing. Our team of experts can design and manufacture almost any hinge, for any application. We have made upwards of 250,000 unique hinge designs, with more designs being drawn up each day.

SEE MORE AT GOLDWASSALLHINGES.CO.UK/BESPOKE



Gold & Wassall Hinges is well equipped in providing a personal service to fulfil the needs of each and every customer. Its sales reps engage on a personal basis and get to the customer's requirements upon placing an order, advising on and handling everything from measurements, style to fitting; the company is dedicated to finding the right door hinge solution for its customer.

In keeping with the company's goal of providing unrivalled customer service, Gold and Wassall Hinges also provides an abundance of finishing options for its customers. The company is dedicated to providing not only durable, high quality hinges, Gold & Wassall Hinges understands the importance of an aesthetically pleasing, customised design. Able to customise colour, add branding and create a smooth premium finish, Gold & Wassall Hinges' array of finishing options are the perfect complement for its hinges and create a smooth premium finished look.

Providing a full service comprised of a comprehensive design and manufacturing service, the company offers a wide range of hinges from continuous/piano hinges, butt and backflap hinges and standard, to heavy duty and bespoke made to order hinges. Using the company's automatic section which contains eight lines of automated machines, Gold & Wassall Hinges is able to make hinges quicker and to almost any length. The company also maintains the specialist tooling for these machines which can complete multiple operations in each press.

Gold & Wassall Hinges is the only hinge company whose hinges are UK made and all of Gold & Wassall Hinges' stock is available for immediate dispatch.

Gold & Wassall Hinges understands that some projects will require a custom built solution. To aid its customers with custom built requirements, Gold & Wassall Hinges provides a bespoke design and manufacturing service. This service enables the company to be able to create virtually any hinge requirement, facilitating the company to be able to develop both complex designs and simple designs, requiring small alterations.

The company has demonstrated its wealth of expertise and consistency in exceeding expectations. Its sheer magnitude of industry leading expertise echoes throughout Gold & Wassall Hinges' services, which has enabled the company to continue its operations throughout the COVID-19 pandemic, and beyond.

For more information,
please see the details below:
T 01827 63391
www.goldwassallhinges.co.uk



BESPOKE HINGES



GOLD & WASSALL

EST. 1790

01827 63391 - SALES@GOLDWASSALLHINGES.CO.UK - [@GWHINGES](https://www.instagram.com/gwhinges)

High quality, high capacity mowing systems

In this issue of Building Update, we are pleased to announce that we have selected L S Products BV as the recipient of our Commitment to Excellence Award for its dedication and innovative design of the best mowing systems for the maintenance of large area turfgrass.

As a response to the increasing market demand for an upgrade to the 15-year-old electrically driven rotary mowers, the company started working on a newer, more improved version. Combining his years of experience and expertise, Syb Leijenaar – L S Products BV owner and Eco Clipper® inventor developed a new line of electric mowers that graced the market in 2018, and this was when the Eco Clipper® was born.

Built from experience, the Eco Clipper® Mowing System has evolved from the mowing system that was originally developed in the nineties on the turfgrass farm of the Leijenaar family in the Netherlands. Since the first electric mower product launch in 2002 to the latest Eco Clipper® range, L S Products BV has developed an extensive portfolio of machinery and equipment that has grown rapidly and been revolutionary to the turfgrass industry.

“Eco Clipper® is a range of large area mowers with a high productivity that help field managers to minimise their mowing costs, while producing a professional cut. Our mowers are electrically driven and use a special mowing deck design with small mowing blades. The mowing decks have good contour following capabilities and disperse clippings well, even in wet grass. This means we have a few important advantages over other mowers. These include delivering the highest mowing speed possible thus producing a higher productivity, they are quieter and more fuel efficient because of the small blades and electric drive, and they are more versatile to schedule because they can deal with wet grass and any other adverse weather conditions,” said Syb.

The Eco Clipper® Mowing System offers many advantages over traditional cylinder and rotary mowers. Because it consists of an independently suspended 106cm wide deck section, it is cleverly linked together in larger, flexible contour following mowing decks. The entire design and development of the Eco Clipper® Mowing System delivers a clean cut, even clippings dispersion and excellent following of the ground contours with minimal soil compaction.

The system also caters for bespoke requirements so customers can attach the decks to different frames, whether it be Carried or Towed. Offering three options, the Front Mower consists of a single deck with 2-6 sections, a Towed Mower consists of three separate decks of 10-14 sections wide, and a Carried Rear Mower is combined with a Front Mower and consists of 10-14 sections wide.

We asked Syb if he were to describe the company in three words what would he choose and why, and he answered, “Innovative, we believe that it is always possible to improve. Secondly, our serving. What we offer our customers is ultimately a solution to the problems they are facing. Our products are designed to help our customers to do their job better. And thirdly, we are agile. Every member of our team has the ability to act fast and adapt to the ever-changing industry. We are also quick to react to any problems our customers may be facing and work hard to do what needs to be done to help them.”

One particular product to note is the Eco Clipper FM4 Sport for sporting grounds.

Similar to the entire Eco Clipper® Mowing Range, the goal with the Eco Clipper FM4 Sport was to maintain the cutting performance of a properly tuned cylinder mower, but without the high maintenance required for mowing conditions such as wet grass and weeds.

The smooth cutting decks with fast rotating small blades ensure a high quality of cut and a good distribution of the clippings. The clippings are also well spread in wet grass, which makes it possible to schedule the mower almost independently to all weather conditions.

Due to the electrically driven blades, the mower is very economical and quiet. The large wheels and clever deck linking system ensure good contour following and enable high mowing speeds.

Municipalities, sports field and park managers have taken delight in the advantages that the Eco Clipper FM4 Sport brings. The EC-FM4 Sport is a 4.11m wide mower that has four independent cutting decks. The forward position provides excellent visibility and comfort for the tractor operator.



Previous users have reported high productivity gains, a factor two compared to 5-gang self-propelled cylinder mowers, and showed a large appreciation to the low maintenance and the mowers ability to schedule the mowing even under less favourable mowing conditions

such as early morning dew and wet autumns.

“We started our focus on increasing mowing productivity in turfgrass production. With a few adjustments, this mowing system has proven to be a major step forward in reducing mowing costs on sports fields and large recreational grass areas. Some users have cut their mowing costs by more than half since using it!” stated Syb.

Going forward, L S Products BV is looking to continue its successful start in the sports field market in the Netherlands and is keen to now debut this line of products here in the UK to British sports field managers so they can also enjoy the benefits of the Eco Clipper® Mowing System.

With the development of a robotic mower for turfgrass production in the pipeline, L S Products BV has a busy yet exciting few years ahead. In closing, we asked Syb what a commitment to excellence means to the company, “We feel we achieve excellence because we are completely committed to offering the best mowing system for maintaining large area turfgrass which is of course, achieved by our Eco Clipper® Mowing System.”

For more information, please see below:
T +31 6 46 75 35 60
info@ecoclipper.com
www.ecoclipper.com



‘Dedicated to offer the best mowing system for maintaining large area turfgrass’

Has clean cutting results in all weather conditions, improved efficiency (at least 20% more fuel efficient), easy maintenance and repairs and low cost of ownership.

Please visit www.ecoclipper.com
Call +31 (0)646753560
Email info@ecoclipper.com

The seriously multi-purpose GRP Roofing System

Here at Building Update, we are pleased to announce that Tuff Waterproofing Ltd are the recipients of our Product Innovation Award.

Established in 2012, Tuff Waterproofing Ltd is the UK's premier designer, manufacturer and supplier of heavy-duty GRP waterproof flat roofing systems. TuffStuff® has a dedicated product development team that work closely with customers and its own UK based manufacturing facility to produce an



evolving product range that is suitable for multiple flat roof applications.

From its base in Sherburn in Elmet, North Yorkshire, TuffStuff® is the UK's premier GRP flat roofing system and supplies its products through a dedicated stockist network throughout the country.

The advanced TuffStuff® formula uses the latest liquid polyester resins, glass fibre mat reinforcement and flexible trims, to create a fully integrated waterproof, seamless attractive finish with a 25-year guarantee on materials.

Tuff Waterproofing has further expanded its TuffStuff® product range and is now offering its latest GRP roofing innovation; TuffStuff® flexible GRP. This is a single resin

solution that provides an exceptional combination of versatility and durability. It is extremely quick to lay and does not require stripping or re-decking of the roof, saving customers both time and money. It can be applied to a variety of surface types and structures including vertical sections.

Managing Director, Greg Gimenez commented, "Standard GRP is rigid when it is cured, and it is specifically designed for flat roofs. However it can only be applied to OSB3 (Timber), and while this has been very



successful, contractors have been looking for overlay systems which can go over other substrates." TuffStuff Flexible GRP can go onto many substrates including felt, asphalt, single-ply, GRP, concrete, timber and metal.

While other companies have standard GRP, TuffStuff® knows that this flexible GRP provides an exceptional combination of versatility and durability. TuffStuff® flexible GRP has become a very important product already, for a number of reasons. It is a one-pot system, whereas standard GRP comes with a base coat as well as a top coat, and this saves a contractor plenty of time and, comes with a 20 year product guarantee on the full system. However, the major advantage is that while it is curing, it is actually showerproof, and Greg commented, "If contractors experience a rogue shower while installing, they may have to go off-site, but upon returning they can carry on knowing that their work is not ruined (showerproof whilst curing), as it would be with standard GRP. This aspect of our product will really excite contractors that work with GRP regularly." This plus the fact that it is crack resistant, with no weak points has meant that facility companies have also begun using the flexible GRP for patch repairs too.

TuffStuff® Flexible GRP will form a highly flexible, extra tough and seamless waterproof membrane – an ideal solution for areas of heavy-duty foot traffic.

Tuff Waterproofing Ltd will be exhibiting at the UK Construction Week in October in Birmingham, during which clients can find out more about this amazing new product.

For more information, please see below:
T 01977 680250
info@tuffwaterproofing.co.uk
www.tuffstuff.co.uk

New innovation to the TuffStuff® range; TuffStuff® flexible GRP



Tuff Waterproofing is a provider of waterproofing liquid solutions for flat roofs, which are comprised of GRP, flexible GRP and polyurethane. Using its advanced TuffStuff® formula range, which uses the latest liquid polyester resins, glass fibre mat reinforcement and flexible edge trims, it creates a fully integrated 100% waterproof seamless finish. The TuffStuff® product range is used for various applications and across multiple domestic and commercial environments.

With an impressive history which spans across 30 years' experience, Tuff Waterproofing has invested heavily in research and development, company processes and its team to ensure that its TuffStuff® range of products, continue to exceed expectations and set new standards in flat roof waterproofing solutions. From the company's bespoke premises based in North Yorkshire, Tuff Waterproofing maintains its operations on a national scale, supplying its products through a dedicated Stockist network located throughout the UK.

Regarding its progression over the last year, Tuff Waterproofing is pleased to have continued to progress significantly since 2020. With the impact of the COVID-19 pandemic affecting many industries, Tuff Waterproofing was able to remain open throughout and further developed on its product range during the last 12 months.

The company has continuously accumulated growth year-on-year and established an enviable reputation, becoming a key figure in the GRP flat roof market and resulting in TuffStuff® becoming the UK's premier designer and supplier of heavy-duty GRP waterproof flat roofing systems.

Regarding its team, TuffStuff® maintains a dedicated product development team that work closely with its customers to produce a consistently, evolving product range that is suitable for multiple flat roof applications. This commitment to continuous development is echoed throughout the company and its dedicated team of UK based product developers work with UK manufacturing facilities, with the ambition of pushing and setting new standards of GRP roofing systems, to new levels.

T 01977 680250
www.tuffstuff.co.uk
Youtube: https://www.youtube.com/watch?v=h4Q7vDrOgR0

FLEXIBLE GRP

Providing an exceptional combination of versatility and durability. Quick to lay, with no need to strip or re-deck a roof, this fast-curing system saves time and money.

It's a single-resin solution which can be applied to a multitude of surface types and structures including vertical sections.

With two coats applied within one hour, TuffStuff® Flexible GRP will form a highly flexible, extra tough and seamless waterproof membrane – can be a solution for areas of heavy duty foot traffic.



Please visit www.tuffstuff.co.uk

Tel: 01977 680250 | Email: orders@tuffwaterproofing.co.uk



VANDECASTEELE
HOUTIMPORT

Discover our
world of timber

Choose life, Choose wood



Nature's first choice



Ask for your
personal login to
our online portal



Prompt delivery



More than 50
decking species

Photo © Dieter Dejonghe

Endless possibilities for
decking and cladding

Contact

Bergstraat 25
8511 Aalbeke
Belgium
vandecasteele.be

genevieve@vandecasteele.be
+32 56 43 33 00
dave@vandecasteele.be
+44 15 94 83 43 32

Forward

The Belgian fifth-generation family company, founded in 1883 Vandecasteele Houtimport specializes in the import, trading and export of Tropical Hardwood from Africa, Southeast Asia and South America, Scandinavian and North-American Softwood, North American and European Hardwood.

"Vandecasteele Houtimport is fully committed to certified timber," says Isabelle Polfliet, Compliance Manager at Vandecasteele, "We're living in challenging times. But, it's for times like these we exist."

With over 140 years of experience, we know there's only one way: forward.

Sustainability and reliability are an essential part of Vandecasteele Houtimport's DNA. The company is determined to achieve the goal of trading only certified timber by 2025. Isabelle Polfliet, "As far as softwood is concerned, we are at 100%. The challenge, however, lies with the hardwood and especially the tropical hardwoods. Today we are at 80% certified!"

Vandecasteele Houtimport has a clear vision: only certified timber has a future. Substantial investments have been made over the years to be able to realize this future perspective.



"You cannot achieve this goal overnight. This is a long-term job, in which all partners must be included. If we want to assure our customers that we keep our promise to only trade timber that comes from well-managed, certified forests, we need to be sure that all our trading partners share the same strictest certification and sustainability processes as we do."

This has resulted in several actions within the company. "First of all, we were assisted by external experts to get the procedures and protocols in order. Secondly, the team at Vandecasteele was reinforced with 2 forest engineers in Brazil.

"That way we can keep a finger on the pulse of every shipment and we are able to accurately apply the ever-changing legislation in Brazil with great precision."

This sends an important signal to our suppliers. They know that doing business with Vandecasteele Houtimport means: complying with a procedure that is continuously refined and adapted. All timber transport requires our approval. When in doubt the timber is not accepted."



Masters in diversification

Vandecasteele has a long-term commitment to preserving the forests. The family business imports more than 130 different species of timber coming from 40 countries and has over 105,000 cubic meters in stock, mainly certified hard and softwoods.



"We support the LKTS program of FSC® Denmark with which we want to help promote the use of lesser known species. We keep these lesser-known species in stock and offer them as alternatives. Everybody is looking for alternatives for Siberian Larch since the ban on Russian imports.

We have over 15 timber species that we can offer as alternatives, such as FSC® Certified Niové, Movingui, Mukulungu, Tali, Padouk, Jutai, Angelim Amargosso, Red Louro, Sucupira Preta, Sucupira Vermelho, Jatoba, Mandioqueira, Cumarú, Basrolucus, Guariuba, Tatajuba, European Oak, Muiracatiara, Purpleheart and Louro Preto.



Timber is too often prescribed from a specific well-known species, but from the point of view of responsible forest management, we must dare to choose the right durability class for an application instead of a specific type of timber, says Geneviève Standaert, export manager at Vandecasteele Houtimport.

Preservation of the forest

In a well-managed forest, only mature trees are harvested, which amounts to one to three trees per hectare. After that, felling will not take place for at least 25 years. In this way, the forest is preserved for the future.

Rethink everything

We notice a positive evolution in consumer purchasing behaviour says Geneviève. Customers are increasingly asking questions about certification and the origin of the timber.

Buyers are becoming more and more aware of the need to use certified timber. "Importing tropical wood goes further than just asking for certified timber. There is a continuous evolution, because of new insights, new legislation, etc. We work together with external experts, we are broadening our internal knowledge and we continually make progress."

Making progress is an ongoing process. Considerable steps have already been taken with the arrival of the EU Timber Regulation, but we can and should do better. "We want to see and monitor a stronger application and support for certified timber. Vandecasteele communicates continuously with the users via the website and campaigns in order to spread that Message. This is necessary, because the purchase of FSC® certified wood contributes to 14 of the 17 Sustainable Development Goals (or SDG's) of the United Nations'. Since the year 2000, Vandecasteele Houtimport has committed itself through the Corporate Durability Charter by signing up to environmental objectives exceeding the applicable legislation.

In 2018, the charter started a partnership with CIFAL Flanders, the local HUB of UNITAR, the Training and Education centre of the UN. In 2020, Vandecasteele Houtimport was the first timber company in the world that obtained the international recognized 'SDG Pioneer certificate' from UNITAR CIFAL. This year, in 2022, we are the first timber company in the world to have achieved the **SDG Champion award**.

Contact
T +32 56 43 33 00
www.vandecasteele.be



LE TONKINOIS VARNISH



LE TONKINOIS VARNISH IS A NATURAL OIL BASED YACHT VARNISH, USING A CHINESE FORMULA DATING BACK TWO OR THREE CENTURIES. AND WHAT A FORMULA!

IT REMOVES YOUR BRUSH-MARKS, BRINGS OUT THE NATURAL BEAUTY OF THE TIMBER, DOESN'T CRACK OR FLAKE OFF, AND IS PERMANENT, SIMPLY ADD A FURTHER COAT EVERY FEW YEARS.

Please visit www.letonkinoisvarnish.co.uk

Telephone 01628 629892 or email mail@letonkinoisvarnish.co.uk



Paperless defect reporting
and fleet maintenance
all for £1 per vehicle, per week



Driver's app
for easy checks



Fleet portal
for full reporting



GPS tags
for locations



DVSA-compliant
for efficiency

Ask us about our new **License Check** service



watch our video

Try free for 30 days
checkedsafe.com



Fleet Innovation
of the Year 2022



Innovative Business
of the Year 2022



Transport Supplier
of the Year 2019



FUEL LEVEL - SUFFICIENT TO DRIVE TO GARAGE/IC

Yes

Dashboard any warning lights Pass ☐

Wipers / Washers Pass ☐

Visual Check of Mirrors and Glass Pass ☐

Visual check of Tyres, condition wheel nuts

Lights/indicators lenses clean and bulbs Pass ☐

Check Brakes ABS/EBS Pass ☐

Check excessive exhaust Smoke Pass ☐

The UK's number one sealing solutions provider

Service Sealing Solutions Ltd provide a number of different sealing solutions across the UK to both the public and private sectors. As the sole UK distributor for the sealing industry's top manufacturers; DOYMA, FRANK and HKD, Service Sealing Solutions Ltd offers the UK the most extensive range of products that are German manufactured and far outweigh that of any competitor.

Service Sealing Solutions Ltd specialises in high-quality service duct sealing systems for utility services and watertight seals. The company's ever growing market range can benefit from its broad scope of innovative sealing solutions alongside receiving the highest level of expertise.

In 2018, DOYMA granted Service Sealing Solutions Ltd the exclusive rights to distribute their products in the UK. DOYMA stands on the front line when it comes to the development of innovative, practical solutions for sealing



and fire systems. Providing the very best in German engineering, DOYMA is used to seal penetration points in walls and floors to permanently prevent any infiltration of gases and water into the building. All DOYMA products are designed to solve all watertight duct sealing requirements, prevent against structural damage and incorporate rubber mouldings that ensure all gas and watertight features.

Demanding building types, such as power plants, large industrial plants, reservoirs or airports, often require highly specialised custom-made constructions. They place high demands on the fact that building penetrations such as cables and pipe work need to be permanently sealed. In the case of extraordinary pipe dimensions or special thermal, chemical or physical requirements, sealing systems in the form of a special construction are the required solution.

DOYMA have the expertise and an experience of over 50 years to develop and produce the best solution for any building or project, using state-of-the-art design and manufacturing methods as well as professional simulation methods to ensure safety when using DOYMA special constructions.

Suitable mostly for builders of commercial properties, Service Sealing Solutions Ltd has a large range of DOYMA products that come with a 25-year warranty. DOYMA product brochures are available on the website and include products that have been supplied to some of the UK's largest projects such as HS2

and Kings Cross in London. DOYMA has recently released its new generation Curaflex Nova® gaskets which are the perfect solution for any professional tradesman instantly looking to solve sealing problems and can be adapted to multiple applications.

As a UK distributor for FRANK puddle flanges, Service Sealing Solutions Ltd provide assured watertight sealing of pipes through concrete walls, foundation plates and manholes. The FRANK puddle flange is an extremely flexible product and comes in a range of versions. Made from EPDM, the puddle flanges act as a barrier which are also chemically resistant to a wide range of acids and bases. Depending on the diameter, they are proven to be tight and to hold pressures between 8 to 10 bars. FRANK puddles flanges also offer exceptional



resistance to ozone and weathering conditions, and can be installed during construction resulting in a perfect cost-effective alternative to conventional sealing systems.

Lastly, Service Sealing Solutions also supplies HKD products, which are now owned by DOYMA. HKD manufacture a large range of pipe sealing systems and service conduits that are guaranteed to withstand up to four bars pressure. HKD systems have a sealing solution for service conduits cast into concrete without the sleeves. They are supplied and ready to use, requiring no site preparation work prior to installation. With options such as KE Socketless service conduits, KG Wall Ducts and Floor Ducts, together with KG Twin Sockets for installation in pump sumps, HKD products are ideal for situations where suitability for thin-walled concrete structures is vital.

Contact
T 01952 510050
www.servicesealingsolutions.co.uk



Service Sealing Solutions Ltd



Service Sealing Solutions are the sole UK distributor for pioneering the sealing industry's top manufacturers; DOYMA, FRANK and HKD.

Service Sealing Solutions are the sole UK distributor. Wherever services are installed through walls, ceilings or floors, penetrating water may cause damage to buildings. Lack of attention to the points of entry of pipes and cables into the building can have serious results: damp cellars, equipment damaged by water ingress and high repair costs.

Service sealing systems ensure professional and perfect pipe sealing, thus presenting excellent preventative measures against structural damage.

The very best in German engineering is used to seal penetration points at the wall to permanently prevent any infiltration of gases and water into the building, and the duct sealing systems are guaranteed for 25 years.



Homely, friendly and relaxing feel – The George

Situated in the picturesque village of Orton, The George is a traditional Country Inn and Pub nestled on the border of the Howgills and the Eden Valley. As a family run business, visitors to The George can expect nothing less than a warm, friendly and comforting welcome.

The George maintains eight rooms on its premises, providing Bed and Breakfast at extremely reasonable prices. The rooms include single, double/twin and a family room. All rooms contain a TV and have tea and coffee making facilities. Specifically designed to provide a 'home away from home' feel, all of The George's rooms feature comfy beds and a warm, homely feel making them perfect for a snooze after a long day of exploring the nearby attractions.

If you would prefer a night under the stars, The George also has camping facilities for up to 4-5 tents from £5.00 per pitch. Campers will have full use of a bathroom/bath for an additional £6.00 per person and meals are available in the bar and restaurant.

The George is a well-known stop off point that is used for short stays by ramblers, cyclists and keen travellers throughout the country. Guests have recommended

THE GEORGE HOTEL

HOTEL, RESTAURANT & B&B

The George giving five-star reviews of their stay. Its services have remained of the highest quality for many years which is why customers keep coming back. One reviewer quoted, "We have stayed here several times over the last few years. Bronagh and Andy couldn't be more helpful, the food is great, and the rooms are comfy. It's a great pub in a beautiful part of the world." Another guest commented, "We have been doing the Coast to Coast walk and had a great stay at The George. Everything from drying our soaked clothes, to good beer and food, nothing was too much trouble for these amazing hosts." As mentioned here in this review, The George also offers a laundry and drying service just in case its guests are lucky enough to get caught in the Lakeland rain. Furthermore, there is also a secure overnight bike storage for cyclists.

After a long day of either exploring the beautiful surroundings of Orton, or battling the diverse weather conditions the Lakeland has to offer, nothing beats a traditional, hot, home cooked meal in a friendly, cosy country pub.

Producing an enviable selection of traditional real ales and home cooked food using locally sourced produce, The George's menu is an unmissable experience. The George prides itself on using local produce, sourced from within a 20-mile radius of the George Hotel. Offering an abundance of traditional pub grub dishes,



alongside its selection of drinks, The George has some delicious menu options to tantalise your tastebuds. For starters, guests can enjoy options such as a bowl of Home-Made Soup of the Day with crusty bread, or a loaded plate of Cheesy Nachos with sour cream and salsa.

For mains there is an array of dishes that cater to all dietary requirements and tastes including Cumberland Sausage Curl topped with Fried Egg, Mixed Bean Chilli served with rice and nachos, Vegetable Burger topped with cheese in a brioche bun served with chips and coleslaw, the Classic Lakeland Beef Burger topped with cheese and bacon in a brioche bun served with chips and coleslaw, or if you fancy something to really get your teeth into the 12 oz Sirloin Steak topped with creamy mushroom sauce served with chips or mash and salad or veg will more than leave you satisfied.

The George also offers a range of homemade pizzas with a gluten free base option and a selection of toppings. There is also a selection of light snacks for brunch or for those want a quick meal such as Baguettes & Melts, Jacket Potatoes, and Bacon & Egg Baps. Furthermore there is also a children's menu as well as a takeaway menu to which all meals are under £7.00.

Being perfectly positioned, Orton is just three minutes

from the M6 Motorway (Junction 38) and is four scenic miles from the M6 Motorway (Junction 39). There is plenty to see in terms of its surroundings and The George is also on various Coast to Coast and cycle routes including Alfred Wainwright's 'Coast to Coast' walk and Walney to Wear & Whitby Cycle Route (W2W).

The W2W route passes through a variety of wonderful countryside to the South. It stretches between Walney Island, just outside Barrow-in-Furness on Cumbria's Irish Sea coast, and both Wearmouth in Sunderland (153 miles) and Whitby (172 miles) on the North Sea coast.

Additionally, The George is also now on the new re-routed Lakes & Dales Loop which is a 196-cycle loop which covers the Lake District, West Cumbria, Eden Valley, Morecambe Bay & the Yorkshire Dales.

There is a number of local delicacies and businesses to visit and try such as Kennedys Chocolate, a fine chocolate coffee house and factory shop, Orton Farmers Market, where local farmers, producers and artisan craftsmen all offer a tremendous variety of high quality, local and speciality produce on the second Saturday of each month, and Bessy Beck Trout Fishery, a local and well respected Trout fishery that includes three well stocked lakes catering for experienced anglers, with tuition and advice available on request for the less experienced, as well as a tea room, gift shop and farm shop on site.

Whether you're visiting for a pint in the sun, enjoyed in The George's outside terraced beer garden or of an evening to delight in some well-deserved respite and delicious food cosied up in front of the roaring log fire, The George welcomes you to join them for a relaxed stay delivered by a friendly personal service all year long.

For more information please see the details below.
T 01539 624071
www.thegeorgehotelorton.co.uk

The only company in the UK to have served our current Monarch and a King of England with crowd barriers

From Crowd Barriers to Police Met Barriers, Red Herring Event Services Ltd (Red Herring) provide a range of fencing solutions for any local to large-scale event or festival. With previous customers being MSV Donington Park, Leicester City Council, LPH Concerts & Events, Live Nation (Music) UK Ltd, The X Factor, Formula E Operations Ltd and many more, Red Herring is well-known in its field and is trusted as one of the best and most reliable fencing companies in the UK.

The company was established in December 2006 by



Charles Herring who whilst working for a scaffold company during the years of 1985-2006, started doing events for Leicester City Council. He put on his first major event in 1989 for the council and because of this, his outstanding work did not go unnoticed.

Following a redundancy from the scaffold company (21 years' service), Charles was offered to buy the fencing and barriers from the scaffold company to start his own venture. Taking them up on the offer, Charles took it upon himself to start his

own business and in 2006 Red Herring Event Services Ltd was born.

The company has focused mainly on fencing and barriers, building a portfolio of products tailored to the customers requirements that guaranteed the short term, safe, efficient and cost-effective perimeter solutions they required. The company now stock a number of fencing solutions including Crowd Control Barriers 2.3m, Steel Shield Hoarding 2.1m, Temporary Fencing 3.5m, and Police Met Barriers 1.5m.

T 07860 950894
charles@redherringeventservices.co.uk
www.redherringeventservices.co.uk

Stunning Woodland Weddings and Picturesque Glamping



Boveys Down Farm is a stunning quiet retreat set amongst the breath-taking east Devon Area of Outstanding Natural Beauty. The organic working farm, which has been successfully ran by husband and wife Gerald and Pamela Sweetland for over 25 years, is the ideal location for bespoke woodland weddings, scenic glamping and all year round camping.

The farm specialises in crafting some of the most memorable wedding experiences in the UK and they're also able to work that same magic for civil marriages and partnerships. Gerald and Pamela are very serious about making your wedding perfect – down to the tiniest details – and when booking through them you will be invited to their site for tours and a detailed talk regarding your needs and wants for your special day. From the decoration through to the menu served throughout your day, Gerald and Pamela will ensure they'll do everything possible to match your vision and create your magical day.

The private camp site offers a variety of different facilities to campers and glampers, from renovated toilet and shower facilities to brand new electric hook-ups. Other facilities include tent pitches, internet access, hard standings, but most importantly, opportunities to purchase Boveys Down Farm's famous award-winning pasties and pies.

Contact
T 01404 871480
info@sweetland.co.uk
www.boveysdownfarm.co.uk



SUPPLYING THE EVENT INDUSTRY

CROWD CONTROL & POLICE MET BARRIERS, TEMPORARY FENCE & HOARDING PANELS

Working in connection with LPH Concerts & Events | Leicester City Council | MSV Donington Park | VW Music | LOROS | Leicester City Football Club

We can also provide a full service of delivery, install, de-rig and collection. Nationwide service available. No job too small.



www.redherringeventservices.co.uk
charles@redherringeventservices.co.uk
01652 640 426 **07860 950 894**



Rutland Farm Park is a small 18-acre working farm in the market town of Oakham, the county town of Rutland, England's smallest county.

We are open all year round for you and your family to explore our tracks and meet and feed our wonderful and friendly animals.

Opening Times and Admission Prices

Winter
 Monday – CLOSED
 Wednesday – Sunday 10am–4pm
 (Last entry at 3:00pm)

Summer
 Tuesday – Sunday 10am–5pm
 (Last entry at 4:30pm)
 (Summer opening times start when the clocks go forward in March and Winter opening times start when the clocks go back in October)

Open on Bank Holiday Mondays
 Closed Christmas Day and New Years Day

Farm Park Admission
Adult £8.50 – Child £7.50 – Family £28.00



Please visit **www.rutlandfarmpark.co.uk**, contact **01572 722122** or email **info@rutlandfarmpark.co.uk**

How has global conflict affected freight?

2022 has seen the world sadly troubled by global conflict. The war in Ukraine has had shocking scenes with lives lost and buildings destroyed. It has had a massive impact on the world, and has also had a detrimental impact on the movement of freight.

It hasn't been the best year for freight regardless. Although recovering from the COVID-19 pandemic with restrictions all over the globe, whether it be warehouses with staff isolated to entire port closures in which vessels could not call it has all made it more challenging to be able to import and export goods. The cost of living crisis is massively affecting the supply chain, consumers not being able to afford to buy goods, which means suppliers then cannot afford to import & export as many goods as they usually would. Port strikes in the UK in Seaford and Felixstowe has led to port congestion at various ports around the country, making it that little bit more difficult to move goods efficiently. Finally, with the full effect of Brexit now kicking in, it is now a more time-consuming process to import & export with the European Union.

Russia's invasion of Ukraine has had various impacts on various different industries, freight & logistics being one of them. The port of Odesa was shut down for almost 6

fuel costs due to the lack of gas and oil have been passed onto importers, as this is impossible for hauliers to absorb the charges themselves. With some hauliers charging up to 35% extra in fuel surcharges, the cost-efficiency of transport isn't what it used to be. A solution needs to be found and it needs to be found sooner rather than later if transportation costs have any chance of reducing to a more reasonable cost for manufacturers to be able to confidently move freight worldwide.



Europe, along with many parts of the world, are cracking down on Russia, to the benefit of Ukraine, and morally it is more than the right thing to do. The industry is trying once again to flourish after it has survived several hurdles the past few years, many other industries haven't been able to survive the COVID-19 pandemic, but with freight struggling through it and now slowly picking back up, the question we really have to ask is – will the world ever be normal again?

T 01709529709
rotherhamsales@daviesturner.co.uk
<https://www.daviesturner.com/specialist/rotherham-specialists>



months after the city was hit with Russian missiles. Ukraine is a big part of the global food industry, exporting grain via sea out of Odesa. With this coming to a temporary halt, global food prices shot up with the limitation of grain available to make food. Other methods of transport have been used, but the difficulty of travelling through a war torn country, as well as then having to take a longer route to the final destination, is coming at a cost to the consumer.

A major development in the war was the battle of Antonov Airport, which led to the sheer destruction of the world's largest cargo plane – the Antonov AN-225 Mirya. This was a significant event in the war and which



has caused major consequences in shipping out-of-gauge and heavy cargo. The aircraft's last mission was shipping 90 tons of COVID-19 testing kits from Tianjin, China, delivering in Billund Denmark. It shows the big humanitarian impact the plane had on the world. The plane was set to be evacuated on the day that Russia invaded the airport; it was seen as a key target by Russia. Several other aircraft that were part of the Antonov family were destroyed by Russia in what seems like was a purposeful attack. Russia are clearly trying to hurt Ukraine's air cargo sector, which in turn will hurt consumers all over the world. Humanitarian relief is also going to struggle to be distributed, it really does make you question the morals of the attack. A rebuild has been planned however, which is set to cost 3 billion US dollars, and take place over 5 years. However, the biggest cost will be to Ukraine's air cargo sector, which will lose many million more due to the loss of the aircraft.

The lack of gas and oil in the industry is solely responsible for by this war. Russia is one of the main suppliers of gas and oil to the rest of the world, most of the other countries of the world are mercifully standing with Ukraine and looking to aid Ukraine in some way to help limit the damage the country is taking, physically and economically. This has led to Russia not supplying gas and oil to Europe and instead sending it to India and China. European haulage is effected by this hugely. Rising

Davies Turner

Your worldwide freight and logistics partner since 1870

Our mission, quite simply is to satisfy the international freight and supply chain needs of our clients. This has remained a constant ambition since our foundation in 1870.

We continue to take pride in providing a professional and award-winning portfolio of services that are reliable, time/cost-effective, and tailored to the unique requirements of our customers. As one of the first Customs – Authorised Economic Operators in Europe, our focus on service, compliance and supply chain security has been acknowledged as market-leading.

How our specialist team in Rotherham kept a unique request on track
 Davies Turner Rotherham offer many unique ways to arrange your shipping requirements. If you have something out of the ordinary, requires special licences, needs packing, heavy lifting or anything out of the 'normal,' contact our Rotherham office who will never refuse to quote on something unusual and will always take on the challenge.



Catering for all your freight needs
www.daviesturner.com/specialist/rotherham-specialists
T 01709 529709 | F 01709 529710
Email rotherhamsales@daviesturner.co.uk

Professional flooring for performing arts & dance education



Chris Stark



Dance

The world performs on Harlequin floors

Harlequin is the global leader in the manufacture, supply and installation of sprung and vinyl floors for dance and the performing arts and dance studio equipment. Established as the industry choice for architects, building contractors and the world's most prestigious dance and performing arts companies and schools.

For information about specifying the correct floor for dance and performing arts download our RIBA approved CPD online at www.harlequinfloors.com or via the RIBA CPD page.

Contact our technical team for more information:

+44 (0) 1892 514 888 education@harlequinfloors.com



HARLEQUIN

LONDON • LUXEMBOURG • BERLIN • FORT WORTH • MADRID • PARIS • PHILADELPHIA • SYDNEY • HONG KONG • TOKYO • BRNO • LOS ANGELES

Fluregiene 200™ provides protection for hygiene conscious parts and surfaces

- Excellent corrosion resistance
- Low friction anti-fouling and anti-stick properties
- Durable and easy to clean/wipe down
- Permanently applied to metals, alloys and plastics
- Built-in antimicrobial technology actively reduces microbes on the surface of the coating.
- Reduces fungal growth and surfaces stay fresh longer

For more information about **Fluregiene 200™** call us now on **+44 01386 425755** or email **info@cwst.co.uk**



Easy cleaning of hygiene conscious parts



Reduces microbial growth



Permanent coating protection

CURTISS - WRIGHT

Everlube® Products

Deep-Hole drilling automation is more than part load/unload

Originally published in Modern Machine Shop

Photos: UNISIG

UNISIG
DEEP HOLE DRILLING SYSTEMS

For deep-hole drilling, part handling might be the most visible automation element, but it's not necessarily the most impactful. Often, it's internal process automation that yields the most significant results even with a manually loaded drilling machine.

When it comes to automating deep-hole drilling, there are challenges unique to the process itself. These include fixturing complexities – where maintaining alignment requires elements such as guide bushings and tool supports not present in a conventional lathe or milling machine – and part attributes such as length and weight.

Long parts mean a long drilling cycle time, and maintaining production rates often requires multi-spindle, deep-hole drilling systems. Unfortunately, stopping a two or four-spindle machine means two or four spindles sit idle until the parts are loaded and unloaded. So in these instances, the more parts in the machine at one time, the more automation can actually inhibit cycle time while the machine is running.

Solving this problem in multi-spindle machines requires internal automation to achieve the objectives of lean manufacturing and one-piece flow. In-machine loaders singulate processes so that even within a small four-piece batch you maintain one-piece flow. The operator or automation device puts in a part and takes a part out and the machine does a bit of maneuvering inside to sequence those four parts in such a way as to minimize spindle downtime while maintaining upstream and downstream processes for one-piece flow. For instance, parts could be loaded onto a smart conveyor, indexed, and lifted into chucks for the drilling cycle before robotic unloading on the out-feed side so that there are no bottlenecks to a steady production flow.

Tool life management is another form of internal



automation. Getting feedback to the machine enables the deep-hole drilling process to adapt or halt, if necessary, before tools and parts are damaged.

Tool life management is built into a machine's control, and the machine senses torque thrust and coolant. Chip condition is usually the first indicator of wear, which would otherwise require an operator present to detect, so the machine actually monitors the process and can predict tools starting to wear and identify when they need to be changed. A tool life management system also can count distances drilled and the number of cycles then prompt a tool change at the appropriate time.

That kind of in-machine automation smooths the path for external automation. As the process builds, highly standardized options for robot-ready machines such as an automatic door, workpiece-present sensors and programmable workpiece fixturing makes it easier to

add a robot at a later date. These robot-ready machines also create efficiencies before they are fully automated. Even with manual loading, the automatic doors and programmable clamping make the process more efficient.

In UNISIG's experience, an embedded reamer tool changer enables manufacturers to manage significant throughput increases, even with an operator. With this technology, operators can maintain the pace of production loading the machine, while eliminating the task of inserting reaming tools for each cycle. This allows the operator to redirect efforts towards tasks such as additional quality checks and off-machine setups.

Further information on all machines of the UNI series and the complete UNISIG machine program is available at: www.unisig.com or follow the company on LinkedIn and Twitter (@UNISIG).



Automate Packaging with RG6 Grippers at Pluspack, Denmark

For several generations, Plus Pack has been at the head of the pack among producers of food packaging. The company has continually developed new products that are more or less environmentally friendly, having received several international awards for this work. And not only the green revolution, but also the working environment for their more than 200 employees is given high priority by the company. The working environment in particular is one of the reasons for



focusing on automation. "It is used particularly where heavy and monotone tasks can be taken from the employees to be done by collaborative robots," says strategic Project Manager, Bastian Fietj, "The work station where we use the gripping arm from OnRobot replaces a packaging process where the operator used to work manually on stacking products on top of each other, pressing out the air between them. The manual process required a lot of repeated heavy lifting and a lot of stress on the shoulders. We have removed this physical strain from the employees." he says.

Unproblematic solution

And certainly, there is no reason to wait before automating the production. At Plus Pack, the implementation of the End-of-Arm tool from OnRobot has been fast and unproblematic, says Project Manager Simon Laigaard, "In our opinion, the

OnRobot gripping arm is easy to work with. By adjusting four screws, we can change the fingertips on the gripping arm, making it precisely suited for the individual product. If we had opted for building separate tools for each product, the cost would have been significantly higher than with this solution, where the gripping arm is easily adjustable."

"We ran some tests with the gripping arm in the lab, and the programming was done in a few days. After that, it took just 30 minutes to implement the gripping arm at full speed in the packaging line." he says.

A definite recommendation of OnRobot

As stated, one of the reasons to use collaborative robots is the working environment. Another reason is productivity, which becomes very flexible by using gripping arms from OnRobot, says Bastian Fietje, "We manufacture a lot of different products, and we have a lot of different customers, for whom we manufacture customised packaging solutions. For this reason, we are always trying to optimise the products and the packaging process for each customer, which is something OnRobot's End-of-Arm tools help us do."

If you are planning to automate your production, I would definitely recommend gripping arms from OnRobot, as they offer the flexibility to create customised solutions suitable for specific needs. This is something we have never seen from other suppliers of End-of-Arm tools, he said.

Contact

<https://onrobot.com/en>

OnRobot Palletizer

Powerful, modular palletizing system that delivers flexible palletizing automation to companies

Vikram.kumar@onrobot.com

Solware: Run by Shooters for Shooters



Solware Ltd is a leading UK Gun Shop that sells all types of Air Weapons, Shotguns and Firearms from almost every supplier available nationwide. The registered firearm dealers supply all kinds of mechanisms from Air Rifle Pellet Guns, Air Pistols, Shot Guns, Cartridges, Air Gun Tuning, BB Guns, BB Gun Air Pistols, Gun Dog Training, 22 rimfire, Centrefire, 17 hmr Bullet Guns and more. Not only that, but they can also supply shooting accessories, catapults and other related items.

Now in their 20th year of trading, Solware Ltd is licenced for the sale of Air Weapons, Shotguns and Firearms. In addition to

its online arm (www.solware.co.uk), the business also trades from a specialised store at the Tame Valley Business Centre in Tamworth, which provides a very friendly and professional service. Solware are also the only gun shop in the country that offers all types of guns from nearly all of the Manufactures available in the UK.

In order to guarantee customers nothing but satisfaction, the team at Solware Ltd work closely with all clients in order to supply them with the specific appliances to meet their needs. As a result of their excellent customer service and extensive collection of devices, Solware Ltd has been nominated as finalists for the last five years for the Gun Shop of The Year Award, and has gathered several five star ratings from customers on TrustPilot.com. With their wide array of guns, friendly service, high quality products, fantastic deals and speedy delivery services, Solware Ltd



are renowned for nothing less than excellent customer service.

If you would like to find out more then don't hesitate to contact the team today, as they will be more than happy to help you with any queries you may have:

Contact
T 01827 215222
www.solware.co.uk



RIFLES



AIR RIFLES & PISTOLS

53 BRANDS OF AIRGUNS WITH FULL RANGE OF ACCESSORIES

Trading since 1999

NEW WEBSITE NOW ONLINE

HIKMicro Thermal/Night Vision Evening on Wednesday 9th November 2022
5pm until 8pm at Blackbrook Country Sports Shooting Ground Blackbrook Woods
London Road, A38, Weeford WS14 0PS



Finance Available Through **DEKO**

ALSO STOCKING:



Daystate



WEIHRAUCH

AIR ARMS

Crosman

BROCK

WALTHER



SALES HOTLINE: 01827 215222

Mon-Fri. 9.00am - 5.30pm - Sat. 9.00am - 3.30pm

Email: sales@solware.co.uk www.solware.co.uk

Unit 1, Tame Valley Business Centre, Tamworth B77 5BY

SOLWARE
Feel free to visit our shop