

BUILDING UPDATE

ISSUE: 659 October/November | www.solutionspublishing.co.uk

Demon Designs: Experts in glass

Established in 2011 by Dominic Meakins, Demon Designs specialises in bespoke solutions for glass structures, offering consultancy, design and build services to exceed its clients' requirements every time. Fuelled by a commitment to excellence, the team at Demon Designs always goes the extra mile to ensure complete customer satisfaction, no matter what the project size.

One of Demon Designs' key advantages is its comprehensive service, offering everything the customer might need for their project. "Many of our customers want the hassle removed. For example, if they want a walk-on glass floor installed, they don't want to get a builder in to cut the hole, a plasterer to make good and a decorator to finish it off.

We can do the lot, including engineers' calculations." Recently, Demon Designs joined Check-a-trade, with a view to obtaining more domestic customers in preparation for the uncertainty of the current commercial market. "This has had some success, but we still find that the vast majority of our customers are either returning customers or new customers by recommendation, and you can't really get a better endorsement than that!"

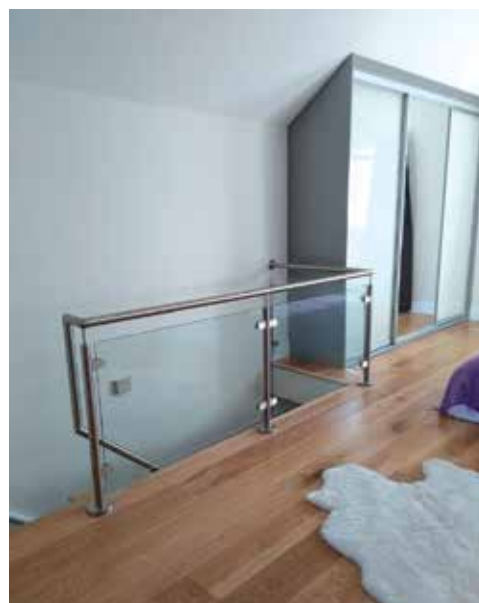
Indeed, as well as a loyal customer base, this commitment to customer satisfaction has resulted in impressive successes for Demon Designs over the past eight years, and this year has been no different. "It's been an interesting year for us," Dominic told us. "We have seen a shift in the type



of projects we win, moving away from large commercial fit-out projects towards domestic 'Grand Designs' type projects and installations.

In the coming years, Demon Designs is looking to complete more complex projects, to help the company grow even further and build upon its achievements since its inception eight years ago.

"We want to take on more bespoke projects, big or small. I personally believe that you can only improve by pushing your boundaries, and this is true for business



also. We are constantly taking on more challenging projects, often from other companies who don't want the risk. The great thing about this is that we often work for companies that would be considered competitors in other fields." Indeed, Demon Designs' future ventures are highly anticipated as it continually develops and improves upon its capabilities. The company is always interested in taking on new customers, either commercial or domestic, so get in touch using the details below or head to the website if you wish to discuss your ideas.

T 01903 733206
info@demon-designs.co.uk
www.archglass.co.uk



Four Oaks
see them on.....V



Le Tonkinois Varnish
see them on.....V



Checked Safe
see them on.....V



Tuff Waterproofing
see them on.....VIII



Service Sealing Solutions
see them on.....IX



BlueRun Ltd
see them on.....X



DCON Safety
see them on.....XIII



RapidSpec
see them on.....XVII

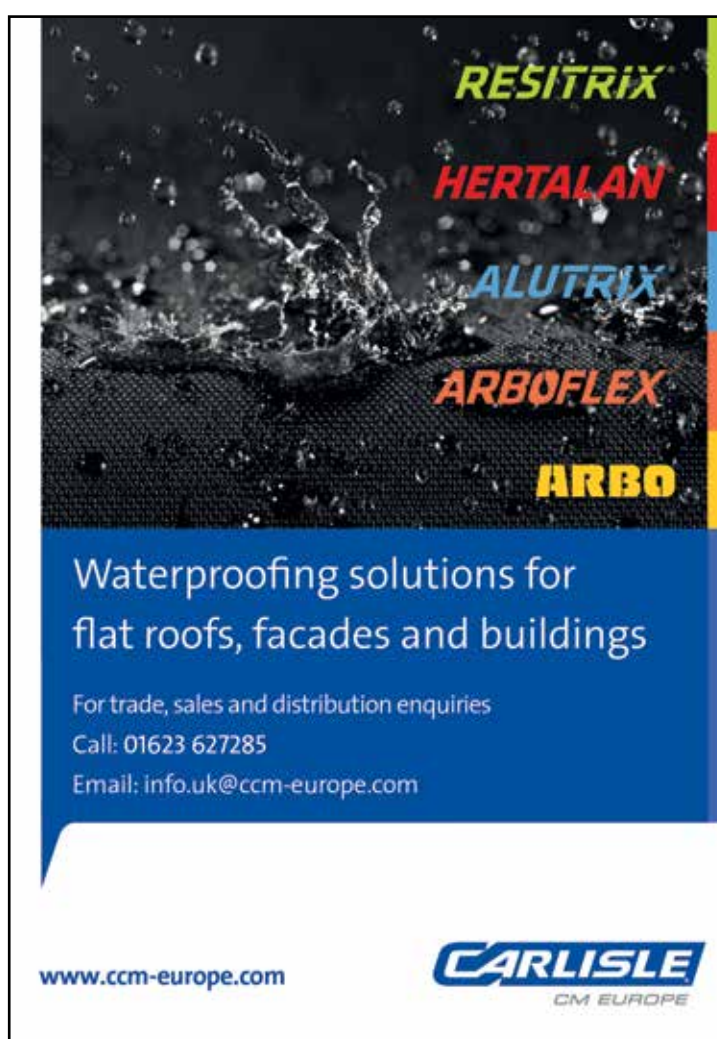


eco clipper®

'Dedicated to offer the best mowing system for maintaining large area turfgrass'

Has clean cutting results in all weather conditions, improved efficiency (at least 20% more fuel efficient), easy maintenance and repairs and low cost of ownership.

Please www.ecoclipper.com
Call +31 (0)646753560
Email info@ecoclipper.com



RESITRIX
HERTALAN
ALUTRIX
ARBOFLEX
ARBO

Waterproofing solutions for flat roofs, facades and buildings

For trade, sales and distribution enquiries
Call: 01623 627285
Email: info.uk@ccm-europe.com

www.ccm-europe.com

CARLISLE
CM EUROPE

Roofing

Waterproofing you can rely on

Carlisle CM Europe (CCM Europe) manufacture high quality EPDM waterproofing membranes for flat roofing, façade systems and building solutions for the construction industry. CCM Europe is a dynamic company with ease of installation and durable roofing systems including EPDM & Liquid Waterproofing. As a

leading manufacturer of waterproofing membranes and sealants, our market leading products are suited for a wide range of flat roof substrates for both new build and refurb.

One particular product worth noting is the ARBOFLEX® PU, a single component liquid

made from pure polyurethane, which, once cured, forms a seamless elastic membrane without any joints. The material properties of ARBOFLEX® PU enable it to be air tight and waterproof on a range of substrates. Alongside its high performance and wear-resistant membrane, ARBOFLEX® PU can adapt to any surface: uneven,

curved or irregular, and with its fast-curing properties can be walked on in 24 hours.

T 01623 627285
info.uk@ccm-europe.com
www.ccm-europe.com
Youtube: <https://youtu.be/ma3CDMiltXk>



Steel Buildings

Steel buildings to suit all budgets



Founded by Dave O'Brien in August 2017, Castle Steel Buildings has evolved from a basic start-up, operating on what was essentially a franchise model, to a rapidly growing construction company with a permanent install team and a developing back-office operation. Previous to the company, Dave O'Brien had worked in the steel construction industry as an installer for over 20 years. After many years, Dave was keen to build his own business that offers bespoke steel buildings with a guaranteed installation option. On the search for a business partner who could run the administration and logistics side, Dave approached John Rosling, who had a number of years' experience in public and private sector management. Since joining, the business has grown in strength at a fast pace.

Today, Castle Steel Buildings is well-known as an industry leader in its field. Offering a number of services to suit every budget including steel buildings for agriculture and rural, commercial and industrial, garages and sheds, as well as cladding installation. Understanding that customers prefer a personalised service, Castle Steel Buildings is committed to ensuring 100% satisfaction from start to finish and prides itself on its; affordability, to offer cost effective light weight composition of the buildings designed to reduce production and installation costs; versatility, with a range of buildings to suit every application; and top British quality, endeavouring to always support British economy. All Castle Steel Buildings materials comply with British Standards BS 6399(pt 2) and exceed ISO9001-200.

"These are among the many qualities that set us apart from our competitors," mentioned John Rosling, Director. COVID-19 has left a dramatic impact on steel production over the last 12 months, with many steel mills across the world shutting down. As such, steel suppliers are running low on stock, the price of steel has risen and there are incremental delays to customer orders. Castle Steel Buildings has worked hard to ensure this implication has not affected its production and most of all, its service to its customers.

"One of the major things we've noticed over the last year is that many people are put off having their steel building because of the cost of raw materials, something that has increased enormously with the pandemic and global shutdown. We've met this challenge by partnering with Peregrine Finance in York to offer a bespoke finance solution. This is a great option for companies looking to get their projects off the ground quickly while spreading the cost over time," said John. With more to offer in its arsenal, we asked John what the company's future plans were, he answered, "Alongside a determined go for growth mindset, we're focussed on developing our range by introducing hot rolled steel designs. Cold rolled steel is inexpensive and effective but there are some limitations in the scale of building that can be done in cold rolled steel."

T 01302 301402
info@csbuildings.co.uk
www.csbuildings.co.uk

Please see video:
<https://www.youtube.com/watch?v=PaDm100mc1c>



STEEL BUILDING SOLUTIONS

+ SINGLE SKIN + COMPOSITE + ROLLER DOORS + WINDOWS +



INDUSTRIAL



AGRICULTURAL



DOMESTIC

+ SKYLIGHTS + PERSONNEL DOORS + INSTALLATION OPTIONS +

GET A FREE ON-LINE QUOTE AT

WWW.CSBUILDINGS.CO.UK

OR CONTACT US ON

01302 301402

INFO@CSBUILDINGS.CO.UK

Steel Structures

CCEL
 Clarke Construction Essex Limited

STEEL CONSTRUCTION SPECIALISTS

We pride ourselves on delivering an excellent quality of service to all our customers. Our diverse portfolio proves we achieve high-end results to any project we endeavour, our association with structural engineers – draftsmen & specialist factories enable us to provide such diverse services from designing and construction of steel structures through to design and production of bronze railings, stairs & balustrades. Our site teams are specialists in heavy & contract lifting, rigging & erection of structures. We can offer a full construction service as a one stop.

- Bespoke Designs
- Specialists in Diversity
- Architectural Metalworks
- Complex Architectural Structures
- Creative Works
- Integrated Steel & Timber
- Specialist Lifting
- Temporary Works



Please visit the website: **www.ccel.org.uk**

Tel: 01375 360605 • Email: office@ccel.org.uk



The South West's Number One Timber Building Company – MAC Cabins

MAC Cabins Limited is a fast-growing Timber Building company based in Okehampton, Devon, with over 30 years' experience in the construction industry. Proud to be the providers of one of the largest selections of; Timber Buildings, Log Cabins, Leisure/Holiday Cabins & Glamping Pods, in the heart of the South West of England.

To complement the extensive ranges of timber

buildings, MAC Cabins also offers a vast variety of other Timber Frame & Modular Frame options, providing one of the widest selections of timber building options, within the market-sector.

For all timber frame styles, MAC Cabins works with self-build and custom-build projects, where the initial design has already been completed with architects. We help to guide small to

medium-sized developers, on sites of 1-30 plots, to identify the best way to convert vision into reality.

MAC Cabins continues to expand its vast portfolio of designs and build options, allowing you to select the perfect combination of style, size and price, confident you will find the perfect selection to meet your growing demands.

With every building, you will receive a structure that has a higher standard specification than most other comparable products.

T 0800 999 1564
help@maccabins.co.uk
www.maccabins.co.uk
<https://www.facebook.com/maccabinsuk>



Portable Buildings

ModCon Cabin Trader Ltd



ModCon Cabin Trader was formed in 2017 by Alan Willets of whom has 25 years experience of working for some major manufacturers in the Modular & Portable Building Industry.

ModCon Cabins as it is also known manufactures and supplies Steel Anti Vandal Portable Cabins, Containers, Modular Buildings and all site ancillary items associated with the Portable Building Industry. Please visit: www.modconcabins.co.uk

Items such as Portable Offices, Canteens, Toilet units, Drying units, Storage Containers, Chemstores, Smoking Shelters, Effluent Tanks, Staircases are regular and repeat produced items that we manufacture for our clients.

Based in Gloucestershire in the South West we are logistically nicely placed around all the major motorway networks for ease of transportation.

Our workforce are all very skilled and experienced fabricators of whom have many years experience working within our industry and so know the expectancy of our customers requirements so you can be sure that if you approach ModCon Cabins to undertake your work you are in very good hands!

Being that all items produced are mostly built on a jig and to customers own specification we are open to undertaking bespoke enquiries too so please feel free to engage with us here at ModCon Cabins even if you have a rather random enquiry for certain products.

Why not also take a look at ModCon Cabin Traders other side of the business which is an Auction/Resale website that allows all and sundry to utilise the site to sell new & used Portable Building products which operates very similar to a well-known auction/resale site we are all familiar with, however only for products relating to our industry.

Please visit: www.modconcabintrader.com





Steel AV Cabins • Smoking Shelters • Chemical Stores & Storage Units
Staircases & Steps • Effluent Tanks • Water Bowsers • Turnstiles



INTRODUCING



MODCONCABINTRADER
www.modconcabintrader.com

ModCon Cabin Trader, the Modular, Portable Building & Plant Industry related, Resale/Auction website!

alan@modconcabintrader.com +44) 0333 404 8822 07842 318869

Garden Buildings

MAC Cabins Classic Post & Beam
Garages & Car Ports, available in Oak or Douglas Fir, with or without accommodation above



For Timber Frame Options, MAC Cabins work with Self Builders and Developer/Builders with their custom design projects, to identify the best way to convert vision into reality.

MAC Cabins Pullman Glamping Pod
Available now for immediate delivery. An example of our Glamping Pods & Timber Buildings available for the holiday and leisure industry.

Annexe Buildings
Garden Rooms
Garages & Car Ports
Home Offices
Glamping Pods
Post & Beam Buildings
Log Cabins
Timber Lodges
Timber Frame




Finance available with Approved Finance, on all our buildings and timber products. Finance subject to status.

0800 999 1564
www.maccabins.co.uk

UNIT 4, CRANMERE ROAD, EXETER ROAD INDUSTRIAL ESTATE, OKEHAMPTON, EX20 1UE


Outdoor Buildings

TIMBER GARDEN BUILDINGS
'Quality Timber Buildings For All Your Needs'

Warwick Buildings
Nightingale Lane
Southam Road
Long Itchington
Warwickshire
CV47 9AT

01926 815757 | www.warwickbuildings.co.uk



**GARDEN OFFICES
TIMBER GARAGES**

Restoration

Traditional brick production specialist

The Bulmer Brick and Tile Company, based in Suffolk, is a family-run business established in 1936. With over 80 years' experience in the industry, the English company truly is a master of its craft.

The Bulmer Brick and Tile Company is renowned for its traditional handmade bricks which, fired in a down draught kiln, have a distinctive finish that blends well with the original London clays bricks.

The beauty of the Suffolk company's bricks lies in their traditional production method. The bricks are made from clay dug from the same clay seam used since Tudor times. The wealth of experience amassed by the company coupled with their respect for the process is what separates The Bulmer Brick and Tile Company from the competition.

Having produced bricks for reputable clients

such as the National Trust, English Heritage and Historic Royal Palaces, the company is able to lend its services to both private and commercial developments. Its facings and specials can be made with almost any texture; with 150 different sizes of facings and a range of over 5,000 special shapes, including all standard plinths, squints and copings and extends to purpose made chimney bricks, terracotta, mullions, jambs, floor bricks, pampments,

decorative plaques, garden edgings and a full range of rubbing blocks.



Contact
T 01787 269232
www.bulmerbrickandtile.co.uk

Waste Water & Drainage

H.D. Services Ltd: Sewage Treatment and Water Boreholes



Founded in 1984 H.D. Services Ltd. aim to provide the highest quality percussion drilled boreholes, sewage treatment systems and Open-Loop ground source heat pump installations in the Southeast. Feasibility of any project can generally be confirmed upon receipt of a site postcode.

We offer a one stop shop for self-builders, developers, contractors, consultants and architects, providing waste and drainage solutions, independent water supplies and renewable heating options – all specifically tailored to meet individual needs and suited to the geology of the Southeast.

Sewage Treatment, Boreholes and Soakaways

We have been involved in the design, supply and installation of sewage treatment systems for over 30 years. We can either provide package solutions or we can design bespoke systems to meet individual client needs.

Projects undertaken throughout the southeast range from small solutions for single households to larger scale solutions for estates, business parks, farms, schools, caravan sites, hotels and public houses.

We offer a support service for consent to discharge applications to the Environment Agency – a requirement when installing sewage treatment systems.

Ground Source Heat Pumps

We are award winning installers of Open-Loop GSHP installations. These systems utilise ground water as a heat source. Groundwater is pumped from a water supply borehole directly to the heat pump where temperature is extracted. The water is then returned to the aquifer, normally via a buried harvesting tank where it can start to regain this temperature. As ground water is utilised, there is the option of a potable water supply (subject to analysis and suitable filtration) or irrigation.

For more information, please visit:
www.hdservicesltd.co.uk

With over 30 years experience, we offer bespoke solutions for the domestic market across the South East. Feasibility of a project can usually be determined with a site postcode.

COVID-19 SAFE WORKING

AWARD WINNING RENEWABLE HEAT INSTALLATIONS
Open-Loop Ground Source Heat Pumps could meet all hot water and heating needs by utilising ground water as a heat source.
Ideal for installation in new or self-builds.

WATER SUPPLY & SOAKAWAY BOREHOLES DRAINAGE SOLUTIONS
Independent water supply for irrigation or consumption*
Soakaway drainage fields and other drainage solutions
*subject to analysis and suitable filtration

SEWAGE TREATMENT SYSTEMS
We can provide package plant or bespoke systems
All systems are designed to meet the needs of individual clients and comply with strict discharge legislation.
Servicing contracts are offered on all installations.

HD SERVICES LTD
enquiries@thehdgroup.co.uk | 01494 792000 | www.hdservicesltd.co.uk

THE BULMER BRICK & TILE COMPANY LTD

The Brickmaker's Tale
by Peter Wilson
Order your copy here today!

Bulmer bricks are made from the finest London Clays, dug from our seams almost continually since Tudor times. All Bulmer bricks are hand made, using traditional methods of making, drying and are fired in a coal burning, down draught kiln. We are a small family business continuing the traditions of brickmaking on this site dating back to the Middle Ages.

We work on large projects for the National Trust, English Heritage and Historic Royal Palaces, but are just as proud of some of the small private work undertaken by individuals.

The Brickfields, Bulmer, Sudbury, Suffolk CO10 7EF
Tel: 01787 269232
Fax: 01787 269040
Email: bbt@bulmerbrickandtile.co.uk

Lighting & Electrical

Feeder Pillars for every purpose from Fisher & Company...



- Traditional Range
- 3 & 5mm Heavy Duty - FFP Range
- Versatile BD Range
- Mini Pillar SDMP Range
- GRP Range inc. Bespoke

- Bespoke and Made to Specification
- Pre-Wired and Shell Only
- Powder Coat Finishes
- 316 or 304 grade Stainless Steel option
- All metal products are made on the premises
- Fast turnaround even on bespoke
- High quality build and finish
- Suitable for all purposes – EV Charging, Power Distribution, Events, Temporary Supply, Sports & Leisure, etc

Quality products made in Somerset. Order from stock for next day delivery* - Made to order sizes/specification and Bespoke from 2 weeks. Call our friendly, knowledgeable Sales Team to discuss your next project on the number below.

*next day delivery is dependant on location, courier service available and time of order.



Tel: (+44) 0333 666 2122
www.fisherandcompany.co.uk
info@fisherandcompany.co.uk



Plants and Sundries to the Trade

Based in Lower Withington, Near Macclesfield only five miles from junction 18 M6, Four Oaks Cash & Carry is now the largest Horticultural 'one stop shop' in the UK! Since day one, we have attained our impeccable range and service to our customers propelling us far in front of our competitors. The Manager, Marlon Kent, who has over 30 years of plant and tree knowledge, handpicks our stock.

Pre-COVID-19 restrictions Marlon would travel to Italy and Spain in the early months of the year, ensuring only the best quality of stock is acquired. This stock would include specimen trees, plants and sundries to the trade. Nowadays, as with most things, this is done via the

internet, quality is not compromised as the stock is now 'visually picked.'

Four Oaks is a specialist supplier of Mediterranean plants, our stock includes Olives and Palms in pots from 1 litre up to 1,000 litres and these are available all year round.

We have an extensive product line of over 1,500 lines of trees and shrubs on display from starter plants to specimen sizes, as well as young bedding and basket plants for which we are historically known.

Catching site of the recent demand for outdoor

seating, specifically from the leisure industry. Four Oaks made the recent decision to begin to stock high quality garden furniture, and this decision has been a resounding success through its sales. Furthermore, we have extended our range of pots, which include terracotta, glazed and authentic wooden half whiskey barrels, just a few of the exciting addition to our ever-growing product line.

T 01477 571797
www.fouroaks-nurseries.com



Plants & Sundries for the Trade

Hedging - Topiary
Buxus - Laurus Nobilis
Shrubs & Trees

Huge range of shrubs from 3 Litre - 15 Litre
Alpines & Perennials. Seiont Nurseries
Young Plants. Pack bedding & Vegetables.

Added Value Lines - April onwards:-
Superb range of Hanging Baskets,
Planted Patio Pots, 13cm potted Zonal Geraniums,
Fuchias, Osteospermums, Marguerites & Standard
Fuchias in 10 litre pots.

Sundries - Garden Stoneware
Yorkshire Flowerpots - Draper Tools

We now stock Garden Furniture
NEW Italian and Spanish Stock
Extensive Pot Range available

The largest horticultural "One Stop Shop" in the UK

FOUR OAKS CASH & CARRY

Longshoot Road, Lower Withington, Macclesfield, Cheshire SK11 9DX
Tel: 01477 571797 **Fax: 01477 571314**
marlon@fouroaks-nurseries.co.uk **www.fouroaks-nurseries.com**

LE TONKINOIS

NATURAL OIL VARNISH

Le Tonkinois is a traditional natural oil based varnish. It is perfect for outdoor, indoor or marine use. With Le Tonkinois varnish the options really are endless.

Combining unrivalled long lasting protection on materials including wood, metal, cork, stone, teak, mdf and grp Le Tonkinois varnish leaves absolutely no brush marks and will restore the beauty and colour of the wood. Flexible enough to move with the timber and able to withstand abrasion and impact, Le Tonkinois varnish is resistant to boiling water, UV, petrol, diesel and sea water. It won't crack, chip or peel off, making it perfect for all outdoor purposes as well as indoor.

www.letonkinoisvarnish.co.uk
01628 548840

Natural Oil Varnish

Unbeatable Varnish for a range of uses

Le Tonkinois Varnish is a specially designed varnish that was first formulated back in China almost three centuries ago. The natural oil based yacht varnish comes with a range of excellent benefits, including being permanent, removing brush marks, not cracking or flaking off.



On top of that, the varnish boasts exceptional corrosion protection for metals and has a durable coat too, meaning it can withstand impact without peeling or cracking.

The highly raved about varnish can be seen on yachts and boats, whether in fresh water, sea water, or sludge up and down the country. Not only that, but you can also use Le Tonkinois Varnish in kitchens, outdoor and interior woodwork.

As a result of being fully waterproof and non-microporous, the varnish is resistant to boiling water, alcohol and has even been classified as safe to use in food areas.

Le Tonkinois Varnish can also be used to stain wood, and pigments can be mixed in with the varnish if a particular colour is desired, whilst still allowing the wood to breathe, a feature not typically found among other varnishes.

The varnish is also naturally glossy and can be made matt or satin with an additional coating of Gelomat.

Contact
T 01628 629892
www.letonkinoisvarnish.co.uk

Heating

SolarisKit

Solar Solutions to Lower Carbon and Energy Costs

THE SOLAR HOT TUB HEATING SOLUTION

Let our award-winning solar collectors heat your hot tub without breaking the bank

Why choose the SolarisKit HT100 Hot Tub Heating Kit:

- Easy DIY installation
- Lower your energy costs
- Low maintenance
- Easy-to-follow instructions
- Visually attractive and discreet
- 2-year Guarantee
- ISO 9806 EU Certified
- Eco friendly, lower your carbon emissions

Buy online at www.solariskit.com & save £25 on your order using code INTGLAMPING22. Offer ends 31st July 2022.

As featured on **BBC FOUR** **BBC WORLD SERVICE** **MADE IN BRITAIN** **Certified B Corporation**

Summer Special! Save £25

Compliance Solutions

Complete compliance solutions

Since 2014, CheckedSafe has provided simple and inexpensive tailored compliance solutions. Established by Gary Hawthorne and Darran Harris, CheckedSafe is a SaaS platform compliance provider providing several apps and a web-based reporting system that is multi-functional and secure.



The CheckedSafe system offers organisations a complete solution, enabling them to manage and protect their workforce and comply with legal compliance requirements whilst reducing cost and liability.

Located in Burnley, its system is global and can be accessed from anywhere as long as you have an internet connection for the management portal, the app itself works off line and on-line so there is no restriction on using the app.

CheckedSafe has a range of services from vehicle compliance solutions, compliance and regulations, risk assessment and incident reporting tools via the App that enables them to offer the client a complete solution.

CheckedSafe's web-based reporting system is accredited by DVSA and the FLTA and utilised across all fleet types of HGV, PCV, VAN, plant or utilities. If it needs a checklist, CheckedSafe can digitise and catalogue it, providing you with a cost-effective compliance solution.

T 01282 908429
info@checkedsafe.com
www.checkedsafe.com



Experts in Glass



Structural & Architectural Glass

Demon Designs are a leading Architectural and Structural Glass contractor in the Ford area. We are a team of skilled professionals who tackle everything from complex large projects to smaller scale jobs. Fueled by our commitment to excellence, we go the extra mile to make sure clients are completely satisfied with our work.

- | | |
|---|-----------------------------|
| ■ CAD Design Services | ■ Balustrades |
| ■ Toughened Glass | ■ Juliette Balconies |
| ■ Laminated Glass | ■ Bespoke Shower Screens |
| ■ Glass Worktops & Coloured Splashbacks | ■ Sliding Glass Doors |
| | ■ Flush Glazed Doors & more |

When you're looking for top quality work, Demon Designs is here to help. Our construction professionals are available to provide a wide range of customisable options, all guaranteed to meet and exceed expectations. Call us today to schedule a free consultation.



Visit www.archglass.co.uk, email info@demon-designs.co.uk or telephone 01903 733206

Compliance Solutions

The vehicle compliance system for all fleets

Paperless defect reporting and fleet maintenance, all for **£1 per vehicle, per week**



Driver's app



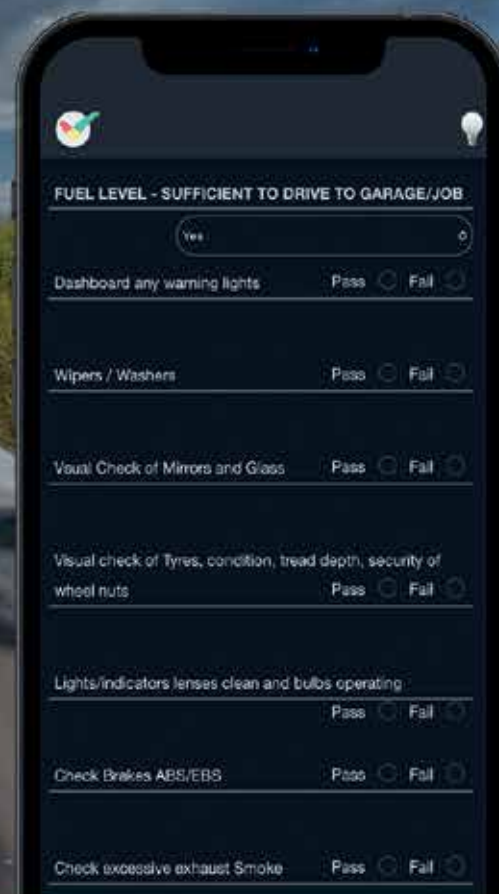
Fleet portal



GPS tags



DVSA compliant



CheckedSafe

Try free for 30 days at checkedsafe.com
or call us on 01282 908 429



VANDECASTEELE
HOUTIMPORT

Discover our
world of timber

Choose life, Choose wood



Nature's first choice



Ask for your
personal login to
our online portal



Prompt delivery



More than 50
decking species

Photo © Dieter Dejonghe

Endless possibilities for
decking and cladding

Contact

Bergstraat 25
8511 Aalbeke
Belgium
vandecasteele.be

genevieve@vandecasteele.be
+32 56 43 33 00
dave@vandecasteele.be
+44 15 94 83 43 32

Product Innovation Award

The seriously multi-purpose GRP Roofing System

Here at Building Update, we are pleased to announce that Tuff Waterproofing Ltd are the recipients of our Product Innovation Award.

Established in 2012, Tuff Waterproofing Ltd is the UK's premium designer, manufacturer and supplier of heavy-duty GRP waterproof flat roofing systems. TuffStuff® has a dedicated product development team that work closely with customers and its own UK based manufacturing facility to produce an evolving product range that is suitable for multiple flat roof applications.

From its base in Sherburn in Elmet, North Yorkshire, TuffStuff® is the UK's premier GRP flat roofing system and supplies its products through a dedicated stockist network throughout the country.

The advanced TuffStuff® formula uses the latest liquid polyester resins, glass fibre mat reinforcement and flexible trims, to create a fully integrated waterproof, seamless attractive finish with a 25-year guarantee on materials.

Tuff Waterproofing has further expanded its TuffStuff® product range and is now offering its latest GRP roofing innovation; TuffStuff® flexible GRP. This is a single resin solution that provides an exceptional combination of versatility and durability. It is extremely quick to lay and does not require stripping or re-decking of the roof, saving customers both time and money. It can be applied to a variety of surface types and structures including vertical sections.

New innovation to the TuffStuff® range; TuffStuff® flexible GRP



Tuff Waterproofing is a provider of waterproofing liquid solutions for flat roofs, which are comprised of GRP, flexible GRP and polyurethane. Using its advanced TuffStuff® formula range, which uses the latest liquid polyester resins, glass fibre mat reinforcement and flexible edge trims, it creates a fully integrated 100% waterproof seamless finish. The TuffStuff® product range is used for various applications and across multiple domestic and commercial environments.

With an impressive history which spans across 30 years' experience, Tuff Waterproofing has invested heavily in research and development, company processes and its team to ensure that its TuffStuff® range of products, continue to exceed expectations and set new standards in flat roof waterproofing solutions. From the company's bespoke premises based in North Yorkshire, Tuff Waterproofing maintains its operations on a national scale, supplying its products through a dedicated Stockist network located throughout the UK.

Regarding its progression over the last year, Tuff Waterproofing is pleased to have continued to progress significantly since 2020. With the impact of the COVID-19 pandemic affecting many industries, Tuff Waterproofing was able to remain open throughout and further developed on its product range during the last 12 months.

The company has continuously accumulated growth year-on-year and established an enviable reputation, becoming a key figure in the GRP flat roof market and resulting in TuffStuff® becoming the UK's premium designer and supplier of heavy-duty GRP waterproof flat roofing systems.

Regarding its team, TuffStuff® maintains a dedicated product development team that work closely with its customers to produce a consistently, evolving product range that is suitable for multiple flat roof applications. This commitment to continuous development is echoed throughout the company and its dedicated team of UK based product developers work with UK manufacturing facilities, with the ambition of pushing and setting new standards of GRP roofing systems, to new levels.

T 01977 680250
www.tuffstuff.co.uk
Youtube: <https://www.youtube.com/watch?v=h4Q7vDrOgR0>



Managing Director, Greg Gimenez commented, "Standard GRP is rigid when it is cured, and it is specifically designed for flat roofs. However it can only be applied to OSB3 (Timber), and while this has been very successful, contractors have been looking for overlay systems which can go over other substrates." TuffStuff Flexible GRP can go onto many substrates including felt, asphalt, single-ply, GRP, concrete, timber and metal.

While other companies have standard GRP, TuffStuff® knows that this flexible GRP provides an exceptional combination of versatility and durability. TuffStuff® flexible GRP has become a very important product already, for a number of reasons. It is a one-pot system, whereas standard GRP comes with a base coat as well as a top coat, and this saves a contractor plenty of time and, comes with a 20 year product guarantee on the full system.

However, the major advantage is that while it is curing, it is actually showerproof, and Greg commented, "If contractors experience a rogue shower while installing, they may have to go off-site, but upon returning they can carry on knowing that their work is not ruined (showerproof whilst curing), as it would be with standard GRP. This aspect of our product will really excite contractors that work with GRP regularly." This plus the fact that it is crack resistant, with no weak points has meant that facility companies

have also begun using the flexible GRP for patch repairs too.

TuffStuff® Flexible GRP will form a highly flexible, extra tough and seamless waterproof membrane – an ideal solution for areas of heavy-duty foot traffic.

Tuff Waterproofing Ltd will be exhibiting at the UK Construction Week in October in Birmingham, during which clients can find out more about this amazing new product.

For more information, please see below:
T 01977 680250
info@tuffwaterproofing.co.uk
www.tuffstuff.co.uk



FLEXIBLE GRP

Providing an exceptional combination of versatility and durability. Quick to lay, with no need to strip or re-deck a roof, this fast-curing system saves time and money.

It's a single-resin solution which can be applied to a multitude of surface types and structures including vertical sections.

With two coats applied within one hour, TuffStuff® Flexible GRP will form a highly flexible, extra tough and seamless waterproof membrane – can be a solution for areas of heavy duty foot traffic.



Please visit www.tuffstuff.co.uk

Tel: 01977 680250 | Email: orders@tuffwaterproofing.co.uk

The UK's number one sealing solutions provider

Service Sealing Solutions Ltd provide a number of different sealing solutions across the UK to both the public and private sectors. As the sole UK distributor for the sealing industry's top manufacturers; DOYMA, FRANK and HKD, Service Sealing Solutions Ltd offers the UK the most extensive range of products that are German manufactured and far outweigh that of any competitor.

Service Sealing Solutions Ltd specialises in high-quality service duct sealing systems for utility services and watertight seals. The company's ever growing market range can benefit from its broad scope of innovative sealing solutions alongside receiving the highest level of expertise.

In 2018, DOYMA granted Service Sealing Solutions Ltd the exclusive rights to distribute their products in the UK. DOYMA stands on the front line when it comes to the development of innovative, practical solutions for sealing

and fire systems. Providing the very best in German engineering, DOYMA is used to seal penetration points in walls and floors to permanently prevent any infiltration of gases and water into the building. All DOYMA products are designed to solve all watertight duct sealing requirements, prevent against structural damage and incorporate rubber mouldings that ensure all gas and watertight features.

Demanding building types, such as power plants, large industrial plants, reservoirs or airports, often require highly specialised custom-made constructions. They place high demands on the fact that building penetrations such as cables and pipe work need to be permanently sealed. In the case of extraordinary pipe dimensions or special thermal, chemical or physical requirements, sealing systems in the form of a special construction are the required solution.

DOYMA have the expertise and an experience of over 50 years to develop and produce the best solution for any building or project, using state-of-the-art design and manufacturing methods as well as professional simulation methods to ensure safety when using DOYMA special constructions.

Suitable mostly for builders of commercial properties, Service Sealing Solutions Ltd has a large range of DOYMA products that come with a 25-year warranty. DOYMA product brochures are available on the website and include products that have been supplied to some of the UK's largest projects such as HS2

and Kings Cross in London. DOYMA has recently released its new generation Curaflex Nova® gaskets which are the perfect solution for any professional tradesman instantly looking to solve sealing problems and can be adapted to multiple applications.

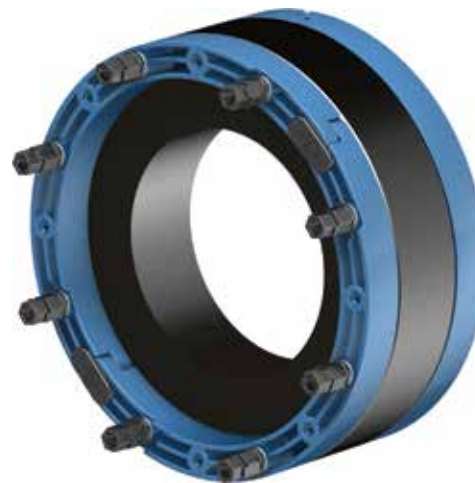
As a UK distributor for FRANK puddle flanges, Service Sealing Solutions Ltd provide assured watertight sealing of pipes through concrete walls, foundation plates and manholes. The FRANK puddle flange is an extremely flexible product and comes in a range of versions. Made from EPDM, the puddle flanges act as a barrier which are also chemically resistant to a wide range of acids and bases. Depending on the diameter, they are proven to be tight and to hold pressures between 8 to 10 bars. FRANK puddles flanges also offer exceptional



resistance to ozone and weathering conditions, and can be installed during construction resulting in a perfect cost-effective alternative to conventional sealing systems.

Lastly, Service Sealing Solutions also supplies HKD products, which are now owned by DOYMA. HKD manufacture a large range of pipe sealing systems and service conduits that are guaranteed to withstand up to four bars pressure. HKD systems have a sealing solution for service conduits cast into concrete without the sleeves. They are supplied and ready to use, requiring no site preparation work prior to installation. With options such as KE Socketless service conduits, KG Wall Ducts and Floor Ducts, together with KG Twin Sockets for installation in pump sumps, HKD products are ideal for situations where suitability for thin-walled concrete structures is vital.

Contact
T 01952 510050
www.servicesealingsolutions.co.uk



Service Sealing Solutions Ltd

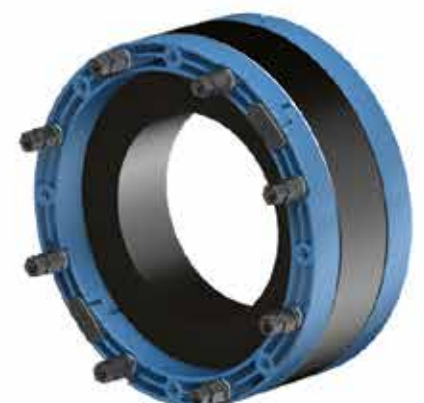
Tel 01952 510050
sales@servicesealingsolutions.co.uk
www.servicesealingsolutions.co.uk

Service Sealing Solutions are the sole UK distributor for pioneering the sealing industry's top manufacturers; DOYMA, FRANK and HKD.

Service Sealing Solutions are the sole UK distributor. Wherever services are installed through walls, ceilings or floors, penetrating water may cause damage to buildings. Lack of attention to the points of entry of pipes and cables into the building can have serious results: damp cellars, equipment damaged by water ingress and high repair costs.

Service sealing systems ensure professional and perfect pipe sealing, thus presenting excellent preventative measures against structural damage.

The very best in German engineering is used to seal penetration points at the wall to permanently prevent any infiltration of gases and water into the building, and the duct sealing systems are guaranteed for 25 years.



Quality, bespoke joinery since 1991

Joinery experts, Bluerun Ltd, was originally established by the current Managing Director, John Jones, and Peter Clayden back in 1991. Peter Clayden resigned a few years later and the company is now owned by John's family – his wife Doreen, son Jeremy, and daughter Dee Newman, and Dee took over the reins in December 2019, when John semi-retired.

Based in Wimbish, near Saffron Walden in Essex, Bluerun manufactures quality, bespoke joinery items, and everything is made to order, nothing is 'off the shelf.' Dee commented, "We manufacture items for the commercial market from door and window packers, to shopfronts, reception desks, mainframes, pub doors, and years ago we even made a trebuchet for Stansted Mountfitchet castle!"

In the 7,000 sq. ft. factory, Bluerun can produce work using both hard or softwoods, and veneered and painted panels. It has a modern spray paint and lacquer facility, enabling products to leave the factory in a fully finished state.

For domestic clients, Bluerun manufactures everything from windowboards to windows, thresholds to doors, shelving, wardrobes, bi-fold doors, French doors, staircases, indeed most things in a property that are made of timber. It has even made a child's Wendy house and a mansion for cats!

Bluerun will take on projects of almost any size, Dee continued, "The only size limit is whether a finished item can be removed through our workshop doors! Staircases for example, would be made in a kit format, for ease of delivery and installation. We use couriers for deliveries, and they have access to all sizes of vans and lorries." The only thing that is sometimes out of range are installations due to a small workforce, but Dee keeps a list of recommended installers for anything, which is manufactured.



In a crowded marketplace, Bluerun works very hard to be at the forefront of the industry. It is a supplier to Dovista for items such as packers and mainframes, and the company corporate branding is on its vans, emails, and social media presence, along with promotional items, and this has helped recognition and growth of the company in recent years.

Dee remarked, "We are still working old school, and everything is designed using pencil and paper with a dash of imagination. We don't use CAD or CNC, and most items are completed using hand tools for the finishing touches. A lot of love and care is included

within our work, and this has really helped our customer base to grow."

So whether you are looking for a one-off custom made gate, a staircase, or a production run of doors and windows for a new housing development, or a new interior for your pub, restaurant or office, Bluerun can deliver exactly what you are looking for.

For more information, please see below:
T 01799 599995
dee@bluerunltd.co.uk
www.bluerunltd.co.uk



Bluerun Limited

quality bespoke joinery since 1991

QUALITY, CUSTOM MADE JOINERY



Bluerun Ltd have been manufacturing top quality, purpose made joinery for the domestic and commercial markets for over 30 years.

Contact us to discuss your requirements.



Please visit our website: **www.bluerunltd.co.uk**
Tel: **01799 599995** | Email: **dee@bluerunltd.co.uk**
f bluerunltd @ bluerun_joinery

Environmentally friendly plastic lumber

At Building Update, we are proud to announce that we have selected Kedel as the recipient of our Commitment to Excellence Award for its ongoing efforts in producing eco-friendly plastic products for a more sustainable future.

Kedel is a family business founded on ethical and ecologically sound principles. Dedicated to making sustainable living attractive, Kedel believe that by incorporating sustainable recycled plastic products into personal and working environments, it can create a happier, healthier and infinitely more sustainable future for generations to come.

Established by three brothers, Kieran, Dermot and Lewis Walch, Kedel is based in Burnley and supplies nationwide. We spoke to Dermot who explained what commitment to excellence means to them and how they feel they achieve it. "Commitment to excellence is an attitude towards work. You're only as good as your weakest link, so we try to give our staff an autonomous responsibility around servicing our customers and through this we are achieving service excellence."



Because of this, people can make quicker decisions and our customers end up 100% satisfied much quicker. Eco-Friendly Plastic is what we do. Not many people believe plastic can be green but it can. We manufacture plastic wood made from waste polystyrene, and are also suppliers of many other types of recycled plastic profiles from other manufacturers, which allows our customers to keep their carbon footprint down. We maintain excellence throughout our business through our sustainable products, sustainable supply chain and sustainable manufacturing policy."

Winners of the Feefo Trusted Service Award, Kedel's range of recycled plastic lumber reflects the future of the construction industry. From plastic fencing pales and edging board pegs to round posts, boards and



planks, tongue & groove planks, decking, and so much more, Kedel's extensive product range comes with a number of benefits. Of course, the largest advantage of plastic lumber in general is that it does not rot, absorb water and is highly resistant to damage. This much more versatile material means it has a life longevity to be placed in all weathers and climates making it a perfect material for use in construction, leisure, education, gardens and any water applications.

Some could claim that plastic wood is bad for the environment, however, Kedel would argue that yes, initially the cost of plastic wood may be higher but the outcome is that you have a product that will last a lifetime due to its extended longevity and zero maintenance properties. To add to this, Kedel only uses recycled plastic that would otherwise go to landfill, therefore, its contribution towards a circular economy is something to be highly commended.

Moving forward, Dermot explained what the future holds for the company. "We are about to increase the working hours of our extrusion plant to be operating 24 hours



a day 5 days a week which will double our production time, and to support this we are recruiting more extruder operators. In the future, we plan to build a

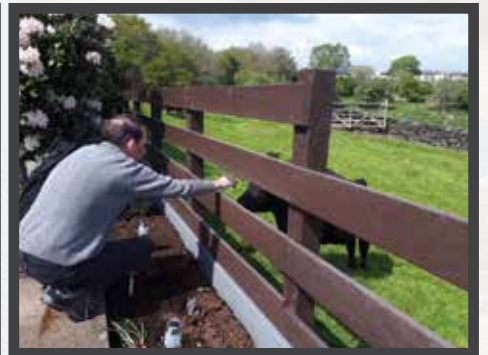
network of resellers around the UK, as the current cost of transport is at an all-time high so we are looking at ways around this for better business practice and to allow for an eco-friendlier way of working."

In closing, we asked Dermot how he felt receiving our award, he responded, "We are thrilled. It shows we are doing all the right things and going in the right direction and we will endeavour to live up to it."

For more information, please see below:
T 01282 861325
www.kedel.co.uk



The Zero Maintenance Alternative to Wood



Recycled Plastic

- 100% recycled and recyclable
- Impervious to fungi, algae, insects
- Never rots, splinters or cracks
- Graffiti resistant
- UV Protected
- Eco-friendly and low carbon
- 100% maintenance free
- Lasts a lifetime



sales@kedel.co.uk | www.kedeltrade.co.uk | 01282 861325



Eco Clipper FM4 Sport for sporting grounds

eco clipper®

Eco Clipper offers large area mowers that help Field Managers minimise mowing costs while producing a clean cut result. The Eco Clipper mowing system was originally developed to replace the cylinder mower in turfgrass production. The goal was to maintain the cutting performance of a properly tuned cylinder mower, but not the high maintenance requirement and sensitivity to mowing conditions, like wet grass and weeds.

The system

The smooth cutting decks with fast rotating small blades ensure a high quality of cut and a good distribution of the clippings. The clippings are also well spread in wet grass. This makes it possible to schedule this mower almost independently of the weather.

Due to the electrically driven blades, the mower is very economical and quiet. The large wheels and clever deck linking system ensure good contour following and enable high mowing speeds.

Municipalities and sports field and park managers have also discovered the advantages of the Eco Clipper mowing system. For them, Eco Clipper offers the EC-FM4 Sport. This 4.11m wide mower has four independent



cutting decks. The forward position provides excellent visibility and comfort for the tractor operator.

The benefits

Users report high productivity gains, a factor two compared to 5-gang self-propelled cylinder mowers, and appreciate the low maintenance and the ability to schedule the mowing even under less favourable mowing conditions, such as early morning dew and wet autumn.

For more information, please contact:
info@vanmac.co.uk or visit:
www.ecoclipper.com



'Dedicated to offer the best mowing system for maintaining large area turfgrass'



Eco Clipper FM4 Sport
for sporting grounds
www.ecoclipper.com

eco clipper®

Make your project possible

DCON Safety Consultants Limited offers leading health and safety consultancy and construction statute advice services. The company prioritises and specialises in the highest levels of informed and intelligent advice, senior project resource allocation and compliance assurance. Informed by industry expertise, DCON Safety Consultants Limited knows that every project has potential risks, no matter what its potential benefits, so its team of highly



experienced construction professionals helps to ensure clients' statutory conformity.

Upon gaining understanding of the specific needs, goals and desires of each client and their project, DCON Safety Consultants Limited is dedicated to implementing a design and construction management plan that will meet or exceed these requirements. And, DCON Safety Consultants Limited ensures that there is honesty, integrity, trust and professionalism underpinning every project.



Moreover, the company's services are centred on three delivery principles:

- **Maximising Quality:** The company implements proven health, safety and wellbeing strategies to help clients achieve high quality and cost-effective work commensurate with the design of their projects.
- **Minimising Risk:** The company effectively manages design and delivery risk on projects to match each client's desired risk level profile.
- **Managing Compliance:** The company relies on its extensive background working on a wide variety of projects to assist clients in developing, monitoring and maintaining compliance performance.

This excellent service would not be possible without the leadership of Diarmuid Condon, a construction industry leader who brings unique perspectives to encourage, support and mentor the abilities of his colleagues. As a construction professional with a surveying background and experience spanning two decades, Diarmuid is emblematic of DCON Safety Consultants Limited's commitment to providing outstanding services to clients.

Diarmuid has contributed his invaluable expertise to over 400 projects over 20 years, with a client list including public sector departments, corporate owners, real estate developers, main contractors, design professionals and infrastructural bodies. With this incredible portfolio, Diarmuid is helping DCON Safety Consultants Limited to become a leader in health and safety consultancy across the construction industry.

Key to DCON Safety Consultants Limited's services is working as a Project Supervisor for the Design Process (PSDP) in various sectors across the Irish construction market.

No project is too simple or too complex for the company's PSDP consultants, all of whom are construction professionals with an average of 20 years' experience in the built environment. The ability to maximise this knowledge and skillset means DCON Safety Consultants Limited can generate distinctive and innovative ideas from traditional PSDP service inputs and outputs.

Additionally, DCON Safety Consultants Limited offers planning compliance assurance services. The ability to strategically support a positive planning decision is exclusive to the company. Its Draft Construction Management Plans (DCMP) inform the overall planning, coordination and control of a project from the beginning of construction to completion. The DCMP also safeguards the obligation placed upon a client to produce a safe, functional and financially viable project.

DCON Safety Consultants Limited also provides its main contractor clients with intelligent, practical, and reasonable physical site safety advice to support compliance and good practice adherence. Behavioural safety outcomes inform how the company approaches each solution with the contractor and their supply chain, identifying opportunities for improvement.



To complement this, DCON Safety Consultants Limited can also help with clients' health and safety strategy. Its holistic and integrated approach can help unlock substantial benefits for clients by providing a structured, objective and SMART framework for full optimisation through the creation of an environment that embraces health, safety and wellbeing.

This means DCON Safety Consultants Limited helps clients to improve their health, safety and environmental performance; enhance staff satisfaction thanks to improved performance; improve risk management and corporate governance with a clear audit trail; gain confidence from long-term planning, better sustainability and performance;



and improve overall corporate reputation, including greater staff satisfaction and a more efficient procurement and supply chain. Finally, DCON Safety Consultants Limited can offer a safety expert witness service, which is headed by Diarmuid himself. He has extensively supported safety-related matters, and is a certified and competent safety professional who will work with clients to identify exactly what kind of safety expert is needed. Then, he will use an extensive network of contacts to recruit the right person to protect clients' interests.

DCON Safety Consultants Limited's fantastic service offering and proven track record

of offering leading health and safety consultancy services makes the company a worthy winner of our Commitment to Excellence award. Such achievements are proof that DCON Safety Consultants Limited is well-placed to help ensure your safety, health and wellbeing and make your project possible.

If you are interested in finding out more information on DCON Safety Consultants Limited's full range of excellent services, head to the website or get in touch directly using the contact details below.

Contact
T +353 (0)1 611 1556
info@dconsafety.com
www.dconsafety.com

How has global conflict affected freight?

Davies Turner

2022 has seen the world sadly troubled by global conflict. The war in Ukraine has had shocking scenes with lives lost and buildings destroyed. It has had a massive impact on the world, and has also had a detrimental impact on the movement of freight.

It hasn't been the best year for freight regardless. Although recovering from the COVID-19 pandemic with restrictions all over the globe, whether it be warehouses with



staff isolated to entire port closures in which vessels could not call it has all made it more challenging to be able to import and export goods. The cost of living crisis is massively affecting the supply chain, consumers not being able to afford to buy goods, which means suppliers then cannot afford to import & export as many goods as they usually would. Port strikes in the UK in Seaforth and Felixstowe has led to port congestion at various ports around the country, making it that little bit more difficult to move goods efficiently. Finally, with the full effect of Brexit now kicking in, it is now a more time-consuming process to import & export with the European Union.

Russia's invasion of Ukraine has had various impacts on various different industries, freight & logistics being one of them. The port of Odesa was shut down for almost 6 months after the city was hit with Russian missiles. Ukraine is a big part of the global food industry, exporting grain



via sea out of Odesa. With this coming to a temporary halt, global food prices shot up with the limitation of grain available to make food. Other methods of transport have been used, but the difficulty of travelling through a war torn country, as well as then having to take a longer route to the final destination, is coming at a cost to the consumer.

A major development in the war was the battle of Antonov Airport, which led to the sheer destruction of the world's largest cargo plane – the Antonov AN-225 Mriya. This was a significant event in the war and which has caused major consequences in shipping out-of-gauge and heavy cargo. The aircraft's last mission was shipping 90 tons of COVID-19 testing kits from Tianjin, China, delivering in Billund Denmark. It shows the big humanitarian impact the plane had on the world. The plane was set to be evacuated on the day that Russia invaded the airport; it was seen as a key target



by Russia. Several other aircraft that were part of the Antonov family were destroyed by Russia in what seems like was a purposeful attack. Russia are clearly trying to hurt Ukraine's air cargo sector, which in turn will hurt consumers all over the world. Humanitarian relief is also going to struggle to be distributed, it really does make you question the morals of the attack. A rebuild has been planned however, which is set to cost 3 billion US dollars, and take place over 5 years. However, the biggest cost will be to Ukraine's air cargo sector, which



William Sweeney, Davies Turner Rotherham

will lose many million more due to the loss of the aircraft.

The lack of gas and oil in the industry is solely responsible for by this war. Russia is one of the main suppliers of gas and oil to the rest of the world, most of the other countries of the world are mercifully standing with Ukraine and looking to aid Ukraine in some way to help limit the damage the country is taking, physically and economically. This has led to Russia not supplying gas and oil to Europe and instead sending it to India and China. European haulage is effected by this hugely. Rising fuel costs due to of the lack of gas and oil have been passed onto importers, as this is



impossible for hauliers to absorb the charges themselves. With some hauliers charging up to 35% extra in fuel surcharges, the cost-efficiency of transport isn't what it used to be. A solution needs to be found and it needs to be found sooner rather than later if transportation costs have any chance of reducing to a more reasonable cost for manufacturers to be able to confidently move freight worldwide.

Europe, along with many parts of the world, are cracking down on Russia, to the benefit of Ukraine, and morally it is more than the right thing to do. The industry is trying once again to flourish after it has survived several hurdles the past few years, many other industries haven't been able to survive the COVID-19 pandemic, but with freight struggling through it and now slowly picking back up, the question we really have to ask is – will the world ever be normal again?

T 01709529709
rotherhamsales@daviesturner.co.uk
<https://www.daviesturner.com/specialist/rotherham-specialists>



Your solution for Stainless Steel fasteners and precision turned parts

Precision Technology Supplies Ltd is one of Europe's leading importers and distributors of Stainless Steel fasteners and precision turned parts. The company is a stockist and distributor of Metric and Unified Stainless Steel fasteners and is a specialist stockist of Stainless Steel Micro screws and fasteners.

Precision Technology Supplies Ltd was established in 1988 and has expanded significantly over the years since its inception, offering its customers the widest range of industrial Stainless Steel fasteners and precision turned parts. Now regarded as one of the leading suppliers in both the UK and Europe, the company delivers on a global scale, offering same day shipping from stock.

"We supply to customers in a wide variety of different industry sectors and in over 90 countries all over the world. We offer the widest range of products in our field. Our quality is renowned along with our services and customer support," stated Andy Knight, Sales Director.

With a vast range of stock on offer, Precision Technology Supplies Ltd is a one-stop-shop for Stainless Steel fastenings, and delivers a fast, reliable and efficient service. In 2015, PTS were announced as a distributor for the Bumax range of High Strength Stainless Fasteners and is now more equipped than ever to fulfil its customer's needs. With further additions such as Nordlock washers, Shoulder Screws from AMPG and the Evolution range of construction fasteners. PTS, are able to offer high quality products to a wide variety of industries.



One of the main focuses for the company, and one that Precision Technology Supplies Ltd places the utmost importance on, is its reputation for quality. Precision Technology Supplies Ltd understands the importance of ensuring that quality runs throughout its entire business and not just its products. Through this ethos, the company has continually invested in its people, to ensure it employs the right people, to provide superior market knowledge and outstanding customer service. This ethos is echoed throughout the company's operations, from its supply chain partners and manufacturers to logistics and information technology; everything is carefully and meticulously chosen to uphold the company's stance on quality.

Precision Technology Supplies Ltd is dedicated to customer satisfaction, and invests in people and technology, to create a superior level of customer service. In addition, to ensure that its customers' needs are constantly met, Precision Technology Supplies Ltd is always self-evaluating and evolving through adding new products to its product range and expanding its offering for customers.

Another area of note is Precision Technology Supplies Ltd's services which includes inventory management, plating, path locking and screw modification.

Precision Technology Supplies Ltd holds 30 years of



experience in managing customer production lines on-site to ensure 'just-in-time' delivery. The company offers a selection of variations for Direct Line Feed management, which can be tailored to suit individual needs.

In terms of its plating service, Precision Technology Supplies Ltd has the abilities to plate standard and special screws in most materials. The most popular of these is the company's 'Touch-Dry' Chemi-Black process, which is frequently used by an increasing number of customers in high-tech industries. This is also known as 'Black Oxide,' which features a thin finish, that does not affect any dimensional tolerances, the company also provides a variety of other finishes such as Gold, Nickel, Silver and Zinc (Rohs Compliant).

Regarding its screw modification services, Precision Technology Supplies Ltd is able to offer a modification service for its customers, from 1.6mm diameter to customer drawings and precise specifications. This can often provide a far more cost-effective and efficient solution than manufacturing, especially where smaller quantities are required.

As for the company's future plans, Precision Technology Supplies Ltd's main aim is to continue building upon its solid foundation of quality and its reputation of providing

excellent services, at competitive prices. The company will also be looking to expand both its premises and increase its staffing level to accommodate its rapid, and growing demand.

In closing, we spoke once more to Andy, he stated, "The best way to see how good we are, is to try us!"

If you would like to find out any more information on the company, or to speak to them directly, please see the details below.

Contact
T +44 (0)1342 410758
www.pts-uk.com



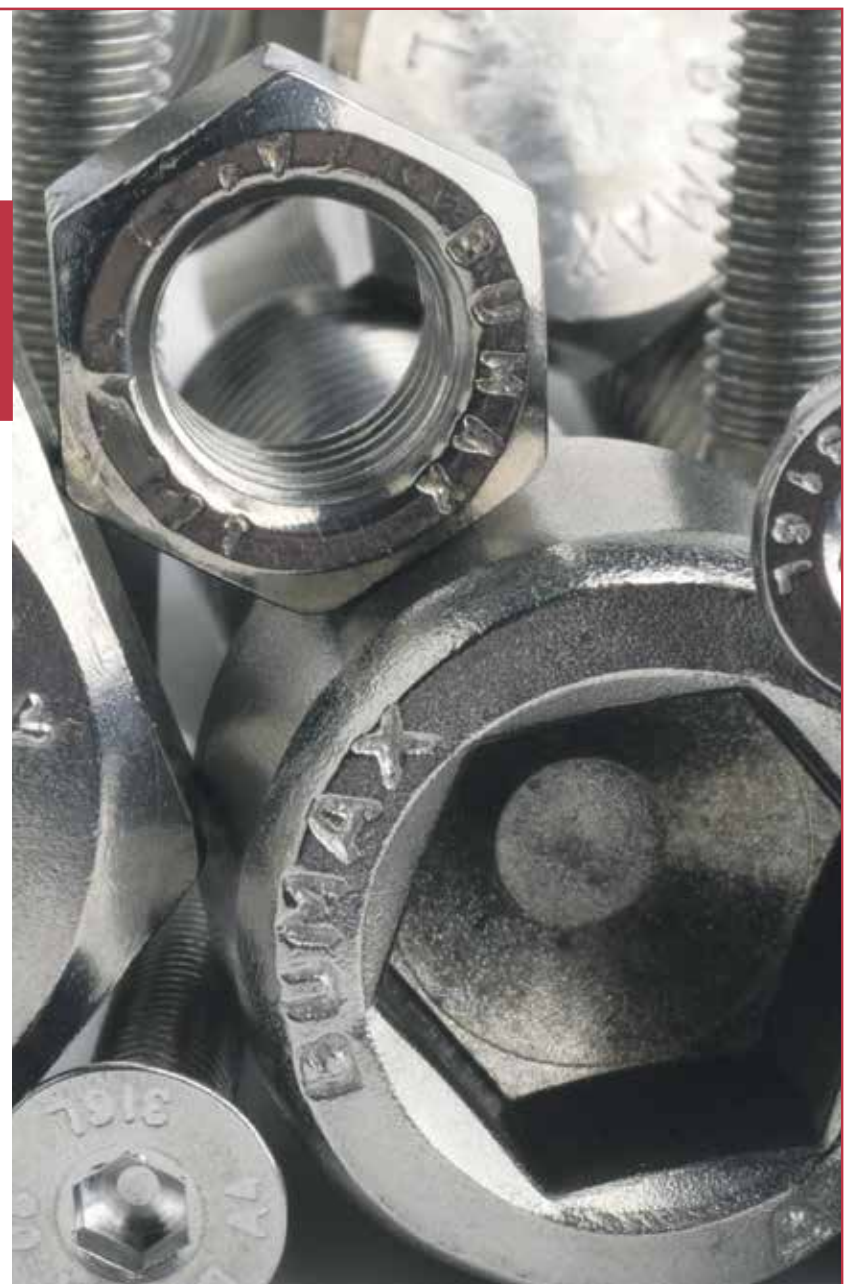
STAINLESS STEEL METRIC FASTENERS

Purchase fasteners, nuts, bolts, screws and more online at PTS – one of the leading global suppliers of industrial stainless steel products.

- Stock range from M1.0 to M36
- A2 and A4 materials available
- Large stocks, fast delivery



For more information, please visit: **www.pts-uk.com**
Telephone: **+44 (0)1342 410758** | Email: **info@pts-uk.com**



Quality hinges since 1790



Gold & Wassall Hinges has established itself at the forefront of the industry since its inception over 200 years ago. With its manufacturing facilities situated in Tamworth in Staffordshire, Gold & Wassall Hinges provides an impressive range of services for design, production and manufacture of hinges, all produced in house and distributed throughout the whole of the UK. Boasting an enviable reputation within the industry, Gold & Wassall Hinges has positioned itself firmly as the UK's number one manufacturer of hinges.

Gold & Wassall Hinges has provided its services to various customers throughout its years in operation and serviced customers from construction to engineering companies. With a proven track record of quality, reliability and durability, Gold & Wassall Hinges ensures it maintains complete control over the design and high quality of its goods.

Customer service is an integral focus for Gold & Wassall Hinges and the company ensures it provides a first class turnkey service, from initial enquiry to delivery and after-sales care. With a team of expert sales reps, Gold & Wassall Hinges is well equipped in providing a personal service to fulfil the needs of each and every customer. Its sales reps engage on a personal basis and get to the customer's requirements upon placing an order, advising on and handling everything from measurements, style to fitting; the company is dedicated to finding the right door hinge solution for its customer.

In keeping with the company's goal of providing unrivalled customer service, Gold and Wassall Hinges also provides an abundance of finishing options for its customers. The company is dedicated to providing not only durable, high quality hinges, Gold & Wassall Hinges understands the importance of an aesthetically pleasing, customised design. Able to customise colour, add branding and create a smooth premium finish, Gold & Wassall Hinges' array of finishing options are the perfect complement for its hinges and create a smooth premium finished look.

Providing a full service comprised of a comprehensive design and manufacturing service, the company offers a wide range of hinges from continuous/piano hinges, butt and backflap hinges and standard, to heavy duty and bespoke made to order hinges. Using the company's automatic section which contains eight lines of automated machines, Gold & Wassall Hinges is able to make hinges quicker and to almost any length. The company also maintains the specialist tooling for these machines which can complete multiple operations in each press.

Gold & Wassall Hinges is the only hinge company



whose hinges are UK made and all of Gold & Wassall Hinges' stock is available for immediate dispatch.

Gold & Wassall Hinges understands that some projects will require a custom built solution. To aid its customers with custom built requirements, Gold & Wassall Hinges provides a bespoke design and manufacturing service. This service enables the company to be able to create virtually any hinge requirement, facilitating the company to be able to develop both complex designs and simple designs, requiring small alterations.

The company has demonstrated its wealth of expertise and consistency in exceeding expectations. Its sheer magnitude of industry leading expertise echoes throughout Gold & Wassall Hinges' services, which has enabled the company to continue its operations throughout the COVID-19 pandemic, and beyond.

**For more information,
please see the details below:
T 01827 63391
www.goldwassallhinges.co.uk**



QUALITY HINGES FOR OVER 200 YEARS

Gold & Wassall have been manufacturing hinges for over two centuries, so it's safe to say we know what we're doing. Our team of experts can design and manufacture almost any hinge, for any application. We have made upwards of 250,000 unique hinge designs, with more designs being drawn up each day.

SEE MORE AT GOLDWASSALLHINGES.CO.UK/BESPOKE



BESPOKE HINGES



GOLD & WASSALL

EST. 1790

01827 63391 - SALES@GOLDWASSALLHINGES.CO.UK - [@GWHINGES](https://www.instagram.com/gwhinges)

Door scheduling made easy, fast and error free



Established in 2002 by Derek Brown, RapidSpec is the first software developed for automatically creating door schedules, drawings, project estimates and bills of materials. Designed to eliminate errors in door set specification and the production of door schedules, RapidSpec is an industry leading software product proven to find any doorset's details from any customer and any project within 15 seconds.

"As software specialists for manufacturing processes, we have produced a software system for fire door manufacturing that not only improves productivity, ensures a faster turnaround and is proven to eliminate a greater number of errors, but also results in lower admin

costs whilst producing a higher return on investment than other software systems on the market," stated Carol Cole, Business Consultant.

With RapidSpec everything is instant. Long gone are the days of spreadsheets, RapidSpec offers instant quotations that include all of the auto generated doorset drawings required. Simple to navigate, the operator uses multiple choice, yes and no questions together with the required dimensions and RapidSpec does the rest. The process is time efficient, cost effective and simple to use.

Manual data entry falls victim to human input error,

which is both time consuming and frustrating for the employer and the employee. It not only impairs performance and efficiency but can result in higher operating costs and fluctuating levels of performance and continuity. With this in mind, RapidSpec offers two services: Fire Door Scheduling and Door Manufacturing Software.

Door Manufacturing Software allows manufacturers to produce detailed door schedules much more efficiently than traditional spreadsheets, calculators and catalogues. RapidSpec uses the existing skills of your estimator who will be able to create professional quotations immediately with just one hour of training. The orderly input of data ensures that nothing is left out and everything is checked. From the data input RapidSpec then automatically creates a scaled, detailed, and dimensioned doorset drawing.

Ideal for manufacturers and fabricators of custom, standard interior and exterior doorsets, as well as architects, contractors and fire door manufacturers. "We have now introduced a barcode functionality and we are constantly updating and improving the software to create greater efficiencies for our clients," said Carol.



Free phone: 03337 00 00 17
www.rapidspec.co.uk



CONTACT US NOW FOR A FREE QUOTATION OR DEMONSTRATION



RapidSpec will give you 20 – 30% more quotations from your estimators and at the same time make their work easier and much less stressful.



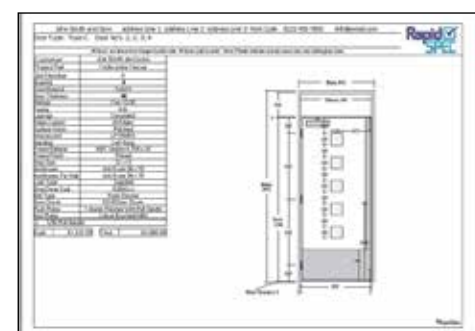
The savings from RapidSpec's error free automatic bill of materials alone is normally enough to pay for the software.



Take the worry and stress out of scheduling. In the background, as you select items, RapidSpec is making hundreds of checks for you. Less double checking = higher output!



Robin Bell, Sales Manager
at Rapid Spec



It is vital fire doors are designed and manufactured to the right specifications to ensure they have the correct level of fire resistance. Fire Door Schedule is a door specifying and scheduling software from RapidSpec that allows door manufacturers and designers to quickly and simply create accurate fire door schedules from standard specification sheets. The simple process is designed so that the operator only needs to answer a few questions and input the dimensions of the door for the software to then produce an accurate fire door schedule complete with diagrams, dimensions, project estimates and bill of materials.

Over the years, RapidSpec been continuously developing its software to offer the best solutions to its customers. Despite the pandemic, the company has achieved further growth and has big plans for the future. Robin Bell, Sales Manager at Rapid Spec commented, "We are expanding internationally, with a focus on the Commonwealth in the first instance. We have also just recorded a video highlighting the enormous benefits of using RapidSpec on our customers' productivity. This should be available on the website very soon."

Contact
 T 03337 000017
robin@rapidspec.co.uk
www.rapidspec.co.uk



Our goal is 100% certified timber from 2025

The Belgian fifth-generation family company, founded in 1883 Vandecasteele Houtimport still has to deal with old prejudices on the use of hardwood. "Everyone knows that timber is a sustainable material," says Isabelle Polfliet, Compliance Manager at Vandecasteele, "A lot of users still associate tropical timber with the disappearance of the forests." Nevertheless, Vandecasteele Houtimport is fully committed to certified timber.

Sustainability and reliability are an essential part of Vandecasteele Houtimport's DNA. The company is determined to achieve the goal of trading only certified timber by 2025. Isabelle Polfliet, "As far as softwood is concerned, we are at 99%. The challenge, however, lies with the tropical hardwood and today we are at 66%!" Vandecasteele Houtimport has a clear vision: only certified timber has a future.

Substantial investments have been made over the years to be able to realize this future perspective. "You cannot achieve this goal overnight. This is a long-term job, in which all partners must be included. If we want to assure our customers that we keep our promise to only trade timber that comes from well-managed, certified forests, we need to be sure that all our trading partners share the same strictest certification and sustainability processes as we do."

This has resulted in several actions within the company. "First of all, we were assisted by external experts to get the procedures and protocols in order within our company. For example, we apply a responsible purchasing policy that must be signed by every supplier." Secondly, the team at Vandecasteele was reinforced with a forest engineer in Brazil. "That way we can keep a finger on the pulse of every shipment and we are able to accurately apply the ever-changing legislation in Brazil with great precision."

This sends an important signal to our suppliers. They know that doing business with Vandecasteele Houtimport means: complying with a procedure that is continuously refined and adapted. Every timber transport requires approval. When in doubt the timber is not accepted by us."



Digitalize

Last year another important step was taken in the partnership with 11 Foundry and their product Fibertrace. "This is in line with our intention to digitize all processes within our company. Fibertrace allows us to register all processes related to compliance in a structural and transparent way," says Isabelle Polfliet.

"The choice for certified timber does not mean that we push all non-certified suppliers aside. We have a preference for certified wood. By working together with external auditors, we can carry out field audits and share the results and the expenses with colleague importers. This enables suppliers to gain insight into their processes and where there are areas for improvement. In this way, we will gain certified suppliers in due course."

Vandecasteele has a long-term commitment to preserving the forests. The family business imports more than 125 different types of wood from 40 countries and has 105,000 cubic meters in stock, mainly certified hard and soft woods.

"This wide range of wood species is also due to our support for the LKTS program of FSC Denmark. With this we want to help promote the use of lesser known species. We keep these lesser-known types of wood in stock and offer them as an alternative. Too often, regulations refer to the known types of wood. From the point of view of good forest management, one must dare to choose the right durability class for an application instead of a specific type of wood."

Preservation of the forest

In a well-managed forest, only mature trees



are harvested, which amounts to one to three trees per hectare. After that, felling will not take place for at least 25 years. In this way the forest is preserved for the future. Mother trees, trees with bee nests and the like are of course not harvested.

Positive evolution

Isabelle Polfliet notes that a positive evolution is noticeable in consumer purchasing behaviour. Customers are increasingly asking questions about certification and the origin of the timber. Buyers are becoming increasingly aware of the need to use certified timber.

"Importing tropical wood goes further than just asking for certified wood. Internally, the processes and procedures must also be in order. Say what you do and do what you say. This means a continuous evolution within our company, because there are always

new insights and legislation does not stand still ('the new Deforestation Law'). Due to our collaboration with external experts, we are broadening our internal knowledge and continuing to make progress."

Considerable steps have already been taken with the arrival of the EU Timber Regulation, but we can and should do even better. "We want to see and monitor a stronger application and support for certified timber. Vandecasteele communicates continuously with the users via the website and campaigns in order to get that message out. This is necessary, because the purchase of FSC® certified wood contributes to 14 of the 17 Sustainable Development Goals (or SDG's) of the United Nations'. Since the year 2000 Vandecasteele Houtimport has committed itself through the Corporate Durability Charter by signing up to environmental objectives exceeding the applicable legislation. In 2018, the charter started a partnership with CIFAL Flanders, the local HUB of UNITAR, the Training and Education centre of the UN. In 2021, Vandecasteele Houtimport was the first timber company in the world to have obtained the international recognized 'SDG Pioneer certificate' from UNITAR CIFAL.

Contact
T +32 56 43 33 00
www.vandecasteele.be



Your partner in fire safety



DB Fire Safety Limited is situated in Peterborough and was set up in 2013 by its Managing Director, David Black. David is a qualified fire risk assessor with over 30 years' experience working in the fire safety industry, with accreditation including from the Institute of Fire Safety Managers, 'Register of Competent Fire Risk Assessors.'

David first launched DB Fire Safety Limited after gaining experience working for two years as an independent fire safety consultant. Recognising the need for his services, David launched DB Fire Safety Limited to provide independent fire safety consultancy, serving clients throughout the UK.

"We are an independent fire safety consultancy specialising in carrying out fire risk assessments. Our main operations consist of carrying out fire risk assessments and providing fire strategy documents for new buildings under construction", said David.

"In addition to offices and factories, we specialise in carrying out fire risk assessments of schools, residential care premises, hotels, and blocks of flats. We also assist building contractors and architects in developing fire & evacuation strategies for buildings under construction or renovation," added David.

Through the company's industry leading



expertise, DB Fire Safety Limited understands the difficulties in navigating fire safety legislation, and as such, the company prides itself on being 'your partner for fire safety'.

Under David's leadership and industry leading expertise in the fire safety industry, the company is well equipped to assist its clients and help to provide their client's businesses with a comprehensive document to identify potential sources of ignition, the likelihood of a fire occurring and the potential impact that a fire would have on its occupants. An assessment is then made of the documented procedures that outline actions that need to be followed in the event of any fire incident, and the required level of training and practice needed.

One of the main advantages of using DB Fire Safety Limited's services is its honest and efficient service, as an independent business without any conflicting interests.

David explained, "The benefit of employing ourselves is that we have no potential conflicts of interest in supplying or maintaining fire extinguishers, fire alarm systems, or installing fire doors etc."

The company also provides in-house training for Fire Wardens and Fire Marshals, as well as online courses, to keep staff and businesses compliant and safe. In addition, DB Fire Safety Limited also provides training courses for general fire safety awareness, which can be carried at the client's premises or via its online E-Learning modular courses. The online courses are a great resource for refresher training.

As the company looks to its future, DB Fire Safety Limited maintains its overall goal of continuing to provide its clients with the best support possible. David added, "We want to ensure their premises are safe, and that business owners and managers meet their responsibilities under fire safety legislation."

If you would like to find out any further information on the company, please see the details featured below:
T 0800 7720559
enquiries@dbfiresafety.co.uk
www.dbfiresafety.co.uk



DB FIRE SAFETY LTD
TEL: 0800 772 0559
enquiries@dbfiresafety.co.uk

THE FIRE SAFETY ORDER

The Fire Safety Order 2005 requires that all businesses, including schools and all other educational establishments, have an up-to-date fire risk assessment and that staff receive instruction in fire safety procedures. Legislation also requires that fire risk assessments are reviewed on a regular basis (recommended to be at least annually).

It is critical that there is a suitable and sufficient set of procedures for staff to follow in the event of a fire emergency. Therefore, all staff must receive appropriate training in those procedures must be tested by carrying out regular fire evacuation drills.

It is also strongly recommended that all staff should receive instruction in general fire safety awareness. Such training would enable staff to fully understand the fire hazards and risks in their respective areas and, therefore, hopefully help prevent a fire from occurring in the first place.

In many schools, there may also be a requirement for senior staff to be designated as Fire Marshals; to have particular responsibilities in the event of fire.

DB Fire Safety has vast experience in dealing with all kinds of educational establishments; specialising in carrying out fire risk assessments and providing training to staff. Our training courses can be provided on site or can be accessed via our variety of e-learning courses. These are modular and can be accessed remotely as time allows.

From our offices in Peterborough, we cater for clients throughout England and Wales and offer a FREE 24hour consultancy service.

For more information regarding fire risk assessments or staff training, call 0800 772 0559 OR Email enquiries@dbfiresafety.co.uk



DB FIRE SAFETY

We are an independent fire safety consultancy providing support to schools across the whole of England

SERVICES WE PROVIDE
FIRE RISK ASSESSMENTS
FIRE DOOR INSPECTIONS

Unit 1, Wittering Service Station
Townsend Road
Wittering
Peterborough
Cambridgeshire
PE8 6AB





Service Sealing Solutions Ltd

Tel 01952 510050

sales@servicesealingsolutions.co.uk

www.servicesealingsolutions.co.uk

Service Sealing Solutions are the sole UK distributor for pioneering the sealing industry's top manufacturers; DOYMA, FRANK and HKD.

Service Sealing Solutions are the sole UK distributor. Wherever services are installed through walls, ceilings or floors, penetrating water may cause damage to buildings. Lack of attention to the points of entry of pipes and cables into the building can have serious results: Damp cellars, equipment damaged by water ingress and high repair costs.

Service sealing systems ensure professional and perfect pipe sealing, thus presenting excellent preventative measures against structural damage.

The very best in German engineering is used to seal penetration points at the wall to permanently prevent any infiltration of gases and water into the building, and the duct sealing systems are guaranteed for 25 years.





DCON
SAFETY CONSULTANTS

Leaders in Built Environmental Safety and Health and Wellbeing Consultancy

Consulting on various aspects of
project design, constructability and
operational lifecycle matters for
local and global commercial clients.

CONTACT US:

DCON Safety Consultants
Suite 5, Fitzwilliam Square East, Dublin 2
Email info@dconsafety.com
Phone +353 (0)1 611 1556

www.dconsafety.com

Dolwin & Gray

Established 1969



Hedge, Copse & Woodland planting
(Transplants to semi-mature)

Cultivation & Seeding Paddocks etc Turfing

All aspects of Tree Work, Surveys and
Reports to BS5837:2012 Trees in Relation
to Design, Demolition and Construction –
Recommendations

www.dolwinandgray.co.uk

Tel 01892 853232

Email enquiries@dolwinandgray.co.uk