

BUILDING UPDATE

ISSUE: 654 April | www.solutionspublishing.co.uk

The UK's number one sealing solutions provider

At Building Update, we take pride in showcasing the very best services provided by companies that provide a wealth of benefits for their industry. As such, in this issue we are proud to announce that we have selected Service Sealing Solutions Ltd as our Sealing Solutions Provider of 2022 and the recipient of our Commitment to Excellence Award.

Service Sealing Solutions Ltd provide a number of different sealing solutions across the UK to both the public and private sectors. As the sole UK distributor for the sealing industry's top manufacturers; DOYMA, FRANK and HKD, Service Sealing Solutions Ltd offers the UK the most extensive range of products that are German manufactured and far outweigh that of any competitor.

Service Sealing Solutions Ltd specialises in high-quality service duct sealing systems for utility services and watertight seals. The company's ever growing market range can benefit from its broad scope of innovative sealing solutions alongside receiving the highest level of expertise.

In 2018, DOYMA granted Service Sealing Solutions Ltd the exclusive rights to distribute their products in the UK. DOYMA stands on the front line when it comes to the development of innovative, practical solutions for sealing and fire systems. Providing the very best in German engineering, DOYMA is used to seal penetration points in walls and floors to permanently prevent any infiltration of gases and water into the building. All DOYMA products are designed to solve all watertight duct sealing requirements, prevent against structural damage and incorporate rubber mouldings that ensure all gas and watertight features.

Demanding building types, such as power plants, large industrial plants, reservoirs or airports, often require highly specialised custom-made constructions. They place high demands on the fact that building penetrations such as cables and pipe work need to be permanently sealed. In the case of extraordinary pipe dimensions or special thermal, chemical or physical requirements, sealing systems

in the form of a special construction are the required solution.

DOYMA have the expertise and an experience of over 50 years to develop and produce the best solution for any building or project, using state-of-the-art design and manufacturing methods as well as professional simulation methods to ensure safety when using DOYMA special constructions.

Suitable mostly for builders of commercial properties, Service Sealing Solutions Ltd has a large range of DOYMA products that come with a 25-year warranty. DOYMA product brochures are available on the website and include products that have been supplied to some of the UK's largest projects such as HS2 and Kings Cross in London. DOYMA has recently released its new generation Curaflex Nova® gaskets which are the perfect solution for any professional tradesman instantly looking to solve sealing problems and can be adapted to multiple applications.

As a UK distributor for FRANK puddle flanges, Service Sealing Solutions Ltd provide assured watertight sealing of pipes through concrete walls,

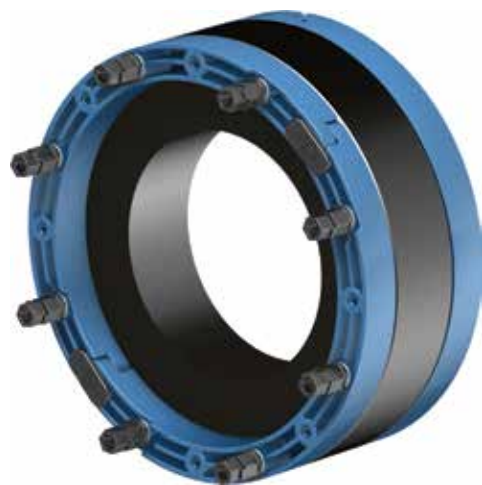


foundation plates and manholes. The FRANK puddle flange is an extremely flexible product and comes in a range of versions. Made from EPDM, the puddle flanges act as a barrier which are also chemically resistant to a wide range of acids and bases. Depending on the diameter, they are proven to be tight and to hold pressures between 8 to 10 bars. FRANK puddle flanges also offer exceptional resistance to ozone and weathering conditions, and can be installed during construction resulting in a perfect cost-effective alternative to conventional sealing systems.

Lastly, Service Sealing Solutions also supplies HKD products, which are now owned by DOYMA. HKD manufacture a large range of pipe sealing systems and service conduits that are guaranteed to withstand up to four bars pressure. HKD systems have a sealing solution for service conduits cast into concrete without the sleeves. They are supplied and ready to use, requiring no site preparation work prior to installation. With options such as KE Socketless service conduits, KG Wall Ducts and Floor Ducts, together with KG Twin Sockets for installation in pump sumps, HKD products are ideal for situations where suitability for thin-walled concrete structures is vital.

For more information, see below.

T 01952 510050
www.servicesealingsolutions.co.uk



Service Sealing Solutions Ltd

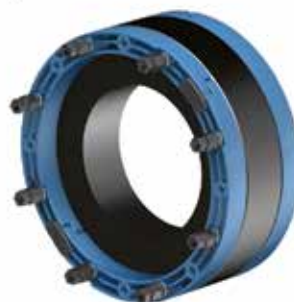


Service Sealing Solutions are the sole UK distributor for pioneering the sealing industry's top manufacturers; DOYMA, FRANK and HKD.

Service Sealing Solutions are the sole UK distributor. Wherever services are installed through walls, ceilings or floors, penetrating water may cause damage to buildings. Lack of attention to the points of entry of pipes and cables into the building can have serious results: damp cellars, equipment damaged by water ingress and high repair costs.

Service sealing systems ensure professional and perfect pipe sealing, thus presenting excellent preventative measures against structural damage.

The very best in German engineering is used to seal penetration points at the wall to permanently prevent any infiltration of gases and water into the building, and the duct sealing systems are guaranteed for 25 years.



Rapid
SPEC

DOOR SCHEDULING SOFTWARE

RapidSpec
see them on.....II



Vandecasteele Houtimport
see them on.....IV



DB Fire Safety Limited
see them on.....VIII



DCON Safety Consultants
see them on.....IX



MAC Cabins Limited
see them on.....XIV

Unbeatable Varnish for a Range of Uses

Le Tonkinois Varnish is a specially designed varnish that was first formulated back in China almost three centuries ago. The natural oil based yacht varnish comes with a range of excellent benefits, including being permanent, removing brush marks, not cracking or flaking off.

On top of that, the varnish boasts exceptional corrosion protection for metals and has a durable coat too, meaning it can withstand impact without peeling or cracking.

The highly raved about varnish can be seen on yachts and boats, whether in fresh water, sea water, or sludge up and down the country. Not only that, but you can also use Le Tonkinois Varnish in kitchens, outdoor and interior woodwork.

As a result of being fully waterproof and non-microporous, the varnish is resistant to boiling water, alcohol and has even been classified as safe to use in food areas.

Le Tonkinois Varnish can also be used to stain wood, and pigments can be mixed in with the varnish if a particular colour is desired, whilst still allowing the wood to breathe, a feature not typically found among other varnishes.

The varnish is also naturally glossy and can be made matt or satin with an additional coating of Gelomat.

If you would like to find out how you can get your hands on some of the remarkable Le Tonkinois Varnish, or would like to find out how you can use it for your own needs, then be sure to get in contact using the number below.

Alternatively, more information can be found by checking out the website.

T 01628 629892
www.letonkinoisvarnish.co.uk



Oak framed buildings with strength you can trust



Bring the beauty of oak frames to your home with Crown Oak Buildings. Specialising in the design, manufacture and construction of oak framed structures, Crown Oak Buildings can help you create a unique garage or extension made from sustainably sourced timber to perfectly complement your home.

Merging old and new, Crown Oak Buildings uses the practical experience of its expert team alongside new technology to offer bespoke oak frames with strength you can trust. The company's website even features an online garage builder, a design tool which allows its customers to create their own garage and receive a quote straight away.

Established over two decades ago, Crown Oak Buildings uses sustainably sourced green oak with contemporary methods of construction to create buildings which are not only built to last, but actually improve over time. Traditional at heart, these oak framed structures are geared for modern life and are truly stunning to both look at and live in.

Whether your project is small or large, Crown Oak Buildings takes the same approach, dedicating time to get to know you and your lifestyle so it can design an oak framed structure which perfectly suits your location, your style, and your budget.

T 01732 866 910
info@crownoakbuildings.co.uk
www.crownoakbuildings.co.uk

Door scheduling made easy, fast and error free

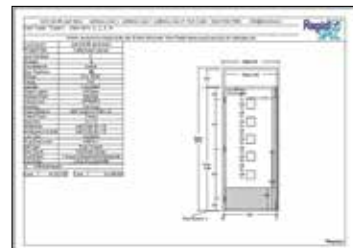


Established in 2002 by Derek Brown, RapidSpec is the first software developed for automatically creating door schedules, drawings, project estimates and bills of materials. Designed to eliminate errors in door set specification and the production of door schedules, RapidSpec is an industry leading software product proven to find any doorset's details from any customer and any project within 15 seconds.

"As software specialists for manufacturing processes, we have produced a software system for fire door manufacturing that not only improves productivity, ensures a faster turnaround and is proven to eliminate a greater number of errors, but also results in lower admin costs whilst producing a higher return on investment than other software systems on the market," stated Carol Cole, Business Consultant.

With RapidSpec everything is instant. Long gone are the days of spreadsheets, RapidSpec offers instant quotations that include all of the auto generated doorset

drawings required. Simple to navigate, the operator uses multiple choice, yes and no questions together with the required dimensions and RapidSpec does the rest. The process is time efficient, cost effective and simple to use.



Manual data entry falls victim to human input error, which is both time consuming and frustrating for the employer and the employee. It not only impairs performance and efficiency but can result in higher operating costs and fluctuating levels of performance and continuity. With this in mind, RapidSpec offers two services: Fire Door Scheduling and Door Manufacturing Software.

Door Manufacturing Software allows manufacturers to produce detailed door schedules much more efficiently than traditional spreadsheets, calculators and catalogues. RapidSpec uses the existing skills of your estimator who will be able to create professional quotations immediately

with just one hour of training. The orderly input of data ensures that nothing is left out and everything is checked. From the data input RapidSpec then automatically creates a scaled, detailed, and dimensioned doorset drawing.

Ideal for manufacturers and fabricators of custom, standard interior and exterior doorsets, as well as architects, contractors and fire door manufacturers. "We have now introduced a barcode functionality and we are constantly updating and improving the software to create greater efficiencies for our clients," said Carol.

It is vital fire doors are designed and manufactured to the right specifications to ensure they have the correct level of fire resistance. Fire Door Schedule is a door specifying and scheduling software from RapidSpec that allows door manufacturers and designers to quickly and simply create accurate fire door schedules from standard specification sheets. The simple process is designed so that the operator only needs to answer a few questions and input the dimensions of the door for the software to then produce an accurate fire door schedule complete with diagrams, dimensions, project estimates and bill of materials.

Over the years, RapidSpec been continuously developing its software to offer the best solutions to its customers. Despite the pandemic, the company has



Robin Bell, Sales Manager at Rapid Spec

achieved further growth and has big plans for the future. Robin Bell, Sales Manager at Rapid Spec commented, "We are expanding internationally, with a focus on the Commonwealth in the first instance. We have also just recorded a video highlighting the enormous benefits of using RapidSpec on our customers' productivity. This should be available on the website very soon."

T 03337 000017
robin@rapidspec.co.uk
www.rapidspec.co.uk

Gabriels Farm, Marsh Green, Edenbridge, Kent, TN8 5PP

3 Bay Garages from £7,508 + VAT

3 Bay 2 Storey Garages from £12,705 + VAT

W: crownoakbuildings.co.uk
E: info@crownoakbuildings.co.uk
T: 01732 866910

Free phone: 03337 00 00 17
www.rapidspec.co.uk

CONTACT US NOW FOR A FREE QUOTATION OR DEMONSTRATION

- RapidSpec will give you 20 - 30% more quotations from your estimators and at the same time make their work easier and much less stressful.
- The savings from RapidSpec's error free automatic bill of materials alone is normally enough to pay for the software.
- Take the worry and stress out of scheduling. In the background, as you select items, RapidSpec is making hundreds of checks for you. Less double checking = higher output!

Covers Timber Invest in Salvador Crosscut Technology from Daltons Wadkin

The installation of a Salvador SuperPush 250 chain fed automatic crosscut saw has allowed Covers Timber and Building Merchants to keep pace with increasing production demands and provide flexibility in staffing within their feeder mills.

Having supplied timber and building materials across the South East for over 175 years, Covers now boast some fifteen branches with an extensive range of over 25,000 product lines. Wanting to satisfy growing customer demand Product Manager, Peter Openshaw, saw an opportunity to help push themselves ahead of the competition.

"We are fortunate that we have highly-skilled sales people, excellent production capability and a very positive attitude being open to new opportunities", comments Peter. "Our

ability to source most things and improvise and adapt ourselves to reflect our changing market helps us achieve strong performance results. Our competitors are very good indeed so this pushes us to try even harder."

Following a thorough investigation of available crosscut saws on the market, Peter contacted Daltons Wadkin, sole distributors for Salvador in the UK and Ireland. "Peters requirements were very familiar – we have helped dozens of timber merchants with similar projects and I knew immediately we had the right solution", enthuses Daltons Wadkin Sales Director, Andy Walsh. "For high production crosscutting the Salvador SuperPush range is ideal; automatic push infeed, cutting list optimisation, heavy duty construction; easy to use".

The Salvador SuperPush 250 is a programmable crosscut

saw capable of processing up to 130 cubic metres of timber per shift. Up to 7 infeed loading chains ensure the machine is continually fed with individual or stacked work pieces while the outfeed collection area is automatically cleared for uninterrupted production.

Covers investment in a Salvador has given them flexibility in staffing which in turn has positively affected growth.

Turnkey delivery and commissioning was provided for Covers, expertly managed by the Daltons Wadkin project installation team. "We have a dedicated group of engineers within our service department whose sole focus is on delivering a frictionless installation and dedicated ongoing support when required", comments Andy. "We go to extreme lengths to ensure all our customers receive the best possible service for the life of the machine."



For more information on the Salvador range of crosscut saws, contact Daltons Wadkin on 0115 986 5201, email info@daltonswadkin.com or visit www.daltonswadkin.com

Automatic crosscut saws

Daltons Wadkin offer a comprehensive range of automatic programmable crosscutting systems for straight and angle work complete with powerful optimisation and defecting software as standard.

production costs reduced by up to **50%**

5-15% less wood used

Visit our Nottingham showroom for a demonstration

SALVADOR SINCE 1982

DALTONSWADKIN EST. 1961

Sole UK & Ireland Distributors
tel: +44 (0)115 986 5201 www.daltonswadkin.com

Complete compliance solutions



Since 2014, CheckedSafe has provided simple and inexpensive tailored compliance solutions. Established by Gary Hawthorne and Darran Harris, CheckedSafe is a SaaS platform compliance provider providing several apps and a web-based reporting system that is multi-functional and secure. The CheckedSafe system offers organisations a complete solution, enabling them to manage and protect their workforce and comply with legal compliance requirements whilst reducing cost and liability. "We can provide you with a fully integrated solution - you can be completely paperless - also by using our system properly you will have a legally defensible product. We bespoke templates on the app to suit individual requirements, our latest release now means that the client can also do this themselves," said Gary.

Located in Burnley, its system is global and can be accessed from anywhere as long as you have an internet connection for the management portal, the app itself works off line and on-line so there is no restriction on using the app. Both Darran and Gary's individual expertise has resulted in CheckedSafe being a nationally recognised company. "I am a transport professional with 30+ years in commercial transport, and Darran has 25+ years as a solicitor, so our individual skills set us apart from other "IT" providers in the industry," said Gary.

CheckedSafe has a range of services from vehicle compliance solutions, compliance and regulations, risk assessment and incident reporting tools via the App that enables them to offer the client a complete solution. Gary explained, "We constantly develop our product from user feedback. We release new features at least every quarter and a new app probably every four months depending on what features we have developed. Customer feedback is critical to us, we know a lot about transport, but the end users have great ideas that we take on board and use to develop free of charge and push out to the CheckedSafe community." CheckedSafe's web-based reporting system is accredited by DVSA and the FLTA and utilised across all fleet types of HGV, PCV, VAN, plant or utilities. If it needs a checklist, CheckedSafe can digitise and catalogue it, providing you with a cost-effective compliance solution.

With much of the industry yet to explore, over five million commercial vehicles in the UK and over 20 million pieces of plant, there is a huge market for CheckedSafe to expand into. "Our plan is to furrow into the fleet industry and develop new features, and if from this market we get new ideas then we will look to develop them further. We have recently developed our API to link with Dynamic 365 for a large crane operator which will come into development later this year/early 2022," stated Gary. We have lots of developments in our pipeline – some very exciting that will be real game changers. Despite COVID-19, CheckedSafe has managed to outsource all marketing resulting in an increase in in-bound enquiries. Utilising platforms such as Zoom and Teams, less time has been spent travelling and more focus has been on growing the business from home.

Eight years ago, CheckedSafe was an idea, that today, has flourished into a fully successful business. Gary and Darran are passionate about what they do and provide a skill set that boasts professionalism and expertise. "We know our industry and our clients have an immediate infinity with us and put faith in us," said Gary.

T 01282 908429
info@checkedsafe.com
www.checkedsafe.com

CheckedSafe

VEHICLE AND ASSET COMPLIANCE

Defect Reporting, Compliance Management & Fleet/Asset Maintenance Solution

FLEET MAINTENANCE

- Full PMI Templates
- Service Sheets
- Bespoke PMI & Service Sheets for those who want that bit extra
- Fully DVSA Compliant & Accredited
- Automated Scheduling
- Daily Reports
- Weekly Reports
- Cost Module for fleet running costs
- Digitise your current 3rd party reports & file in the cloud

FIRST & PRE-USE DEFECT CHECKS

DVSA, HSE, FORS, Border Force, Fork Lift Truck, Plant & Machinery

LOLER, PUWER & ADR

Fully customised templates

Data is realtime

You **CANNOT** manipulate data

Full audit trail with user interaction recorded at each stage

Check time/date/location/movement validation

NOW INCLUDES: Lateral Flow Test record template to record & file your COVID19 test. Great for keeping all in one place & you can even schedule the tests through our system

OTHER FEATURES

- Assign checks to staff/vehicle types
- Wildcard Search
- Send group notification
- Send & queue messages
- Reporting Suite
- ANPR or vehicle registration input
- Depot hierarchy structure
- 3rd Party Fleet Management
- Geo Location & Geo Fencing
- Push Documents (put your handbook & other documents on the app for users)
- COVID Focused Templates
- Risk Assessments via the app
- Lone Working

Contact us today for more information or to start a free 30 day trial email: info@checkedsafe.com **TEL: 01282 908 429**

Vandecasteele Houtimport's No.1 objective – 100% Certified Timbers from 2025 onwards

A family-run timber company Vandecasteele Houtimport, founded in Belgium in 1883 is today run by the fourth and fifth generations of the Vandecasteele family. A modern and expanding business, it has a long-term commitment to service a wide variety of customers in the construction, joinery, cladding and furniture sectors, as well as the high-end marine industry.

Vandecasteele Houtimport imports timber and timber products from over 45 countries worldwide. Its facilities are located in Kortrijk, Aalbeke, Belgium, where the company specialises in the import, trading and export of tropical hardwood from Africa, Southeast Asia and South America. The company also provide Scandinavian and Russian Softwood, Siberian Larch, North American Soft and Hardwood and European Hardwood.



Working alongside timber importers, timber merchants and wholesalers, the company is able to deliver stock that is difficult to source within days using its own fleet of 18 vehicles. In a matter of days, Vandecasteele Houtimport has the resources and ability to adapt and bridge the gap between sources of supply in Africa, Far East, South America and North

America to Europe. This makes the company the first choice with many importers and merchants.

The company has over 130 timber species in stock including the new addition of certified European Oak in Joinery, Prime and Super Prime grades and certified steamed Beech in all qualities. From the most expensive and rare hardwoods, to a full assortment of softwoods in all qualities and sizes, everything is neatly bar coded and displayed.

CERTIFIED timbers: Its impressive and vast stockholding of hardwoods and softwoods is coupled with strong environmental credentials (FSC®, PEFC, OLB, LegalSource™) and an efficient, accurate processing of customer orders. The company has set a challenging goal to trade in 100% certified timbers only from 2025.

Aligns with the 17 sustainable development goals

Vandecasteele Houtimport has set a challenging goal to stock 100% certified timbers from 2025. Currently, 100% of the softwoods the company stock is already certified and over 65% of the tropical hardwood. This number is continuously growing and makes Vandecasteele Houtimport the biggest stockholder of certified tropical timbers in Europe.

Vandecasteele Houtimport now provides its newest addition of stock that is certified European Beech and Oak in Joinery, Prime, Super Prime grades and flooring. The variety of stock from the company embellishes the company's taglines of 'Choose Life, Choose Wood' and 'Using timber is good, using certified timber is wonderful!' Vandecasteele Houtimport really do love what they do and have a strong passion to grow within the industry.

One way in which the company is making growth take place is its reaction to how BREXIT has and will change the industry. To combat new rules and importation structures, Vandecasteele Houtimport has set up a company in the UK – Vandecasteele Timber Ltd – that facilitates the trade to all UK partners.

Vandecasteele Houtimport endeavour to show that timber is the world's most ecological and sustainable material. And its future plans only echo the company's approach to sustainability within the industry. Vandecasteele Houtimport has a dedicated team to ensure all due diligence is up to date and in addition to the strict process, the company has invested in a forest engineer in Brazil to ensure full control on the CoC of the Brazilian timbers purchased.

Circularity

Vandecasteele Houtimport are passionate about timber being used for sustainable building and construction material. Every step the company make boasts several ecological advantages showcasing the use of timber compared to traditional materials. With a low embodied energy and minimal carbon impact, timber really is the most sustainable material. It has an ecological, recyclable and biodegradable nature, which is why Vandecasteele Houtimport is implementing a strict sustainability policy in all of its future actions and activities.

Since the year 2000, Vandecasteele Houtimport has committed itself through the Corporate Sustainability Charter by signing up to environmental objectives exceeding applicable environmental legislation. This year, Vandecasteele Houtimport has achieved the Charter for the 20th time in a row, which makes

Vandecasteele one of the few laureates who participated for 20 consecutive years and successfully completed the trajectory. All the initiatives are linked to the 17 sustainable development goals of the United Nations. A good annual assessment ultimately yields an annual certificate of the Voka Sustainable Business Charter. When the final balance is positive after three years, and companies have elaborated at least one action in each SDG, companies receive the internationally recognized Unitar-SDG Pioneer certificate.

Vandecasteele Houtimport is the first timber company in the world to have obtained the Unitar-SDG Pioneer Award!

Buying from a responsible supplier makes YOU a responsible buyer!

For more information on Vandecasteele Houtimport and the products or services it provides, please see below:
T +32 56 43 33 00
www.vandecasteele.be



VANDECASTEELE
HOUTIMPORT

Discover our world of timber

Nature's first choice

Ask for your personal login to our online portal

Prompt delivery

More than 50 decking species

Endless possibilities for decking and cladding

Contact
Bergstraat 25
8511 Aalbeke
België
vandecasteele.be

dave@vandecasteele.be
+44 15 94 83 43 32
genevieve@vandecasteele.be
+32 56 43 33 00

The world performs on Harlequin Floors

Professional
flooring for
performing arts
& dance
education



The world performs on Harlequin floors

Harlequin is the global leader in the manufacture, supply and installation of performing arts floors and studio equipment. Established as the industry choice for architects, building contractors and the world's most prestigious dance and performing arts companies and schools, we continue to carry out site visits in person or remotely and are working with our partners and clients to ensure we can carry out installations following government health and safety guidelines.

For information about specifying the correct floor for dance and performing arts download our RIBA approved CPD online at www.harlequinfloors.com or via the RIBA CPD page.

If you are interested in booking a CPD please contact cpd@harlequinfloors.com

+44 (0) 1892 514 888 architects@harlequinfloors.com

LONDON • LUXEMBOURG • BERLIN • FORT WORTH • MADRID • PARIS • PHILADELPHIA • SYDNEY • HONG KONG • TOKYO • BRNO • LOS ANGELES



HARLEQUIN
www.harlequinfloors.com



HARLEQUIN
www.harlequinfloors.com

Harlequin is the world leader in advanced technology floors for the performing arts, entertainment and display.

Established in the UK over 40 years ago, Harlequin remains the industry choice for the world's most prestigious dance and performing arts companies, theatres, venues and schools, production companies and global events.

The floor is a dancer's most important work tool; not only is it the canvas for their creativity, it also gives them protection against slips, falls and longer-term stress injuries. It is a common assumption that a well-designed sports floor will suit the needs of dancers, but this is not the case. There may be a temptation to specify floors for aesthetic or budget reasons, or to specify sports floors in the mistaken belief they will be suitable for dance but only a floor developed specifically for dance will do.

Harlequin's experience and reputation are founded on the design, manufacture, supply and installation of a range of high quality portable and permanent sprung and vinyl floors chosen by the world's leading venues – from the Royal Opera House to the Bolshoi Theatre, the Paris Opera Ballet to Sydney Dance Company.

Harlequin is the global leader in its field with offices in Europe, the Americas and Asia Pacific.

T +44 (0)1892 514888
enquiries@harlequinfloors.com
<https://uk.harlequinfloors.com/en>



www.tomorrowsforests.co.uk

Tomorrow's Forests can assist with the supply and planting of high quality local trees as well as sundry products required for your woodland creation project.

Our professional and dedicated team will carry out all the necessary surveys of your property, produce detailed designs and, with our skilled planters, implement the new woodland creation to the highest standard to meet your exact requirements.

We will provide help and advice throughout the process and ensure that specific government funding requirements are met. Following the completion of your woodland creation project, we can offer ongoing maintenance, upkeep and professional advice.

There are many advantages to the planting of trees on less productive or unused land areas and farmers and landowners can now obtain a number of government grant and funding options to help with establishing new woodland areas.

Woodland creation projects can be undertaken on suitable land from 3 hectares up to larger areas of over 10 hectares and can provide substantial environmental and financial benefits.

Woodland Creation Benefits Include:

- Timber production
- Increasing land value
- Providing shelter for crops and livestock
- Providing new wildlife habitats
- Stabilising river banks
- Game cover
- Improving the amenity value

Number one choice for recycled plastic building materials



In this issue of Building Update, we have chosen Kedel as our Eco-Friendly Plastic Products Company of Choice 2022.

Kedel is a family business founded on ethical and ecologically sound principles. Dedicated to making sustainable living attractive, Kedel believe that by incorporating sustainable recycled plastic products into personal and working environments, it can create a happier, healthier and infinitely more sustainable future for generations to come.

Established by three brothers, Kieran, Dermot and Lewis Walch, Kedel is based in Burnley and supplies nationwide. We spoke to Lewis, who explained more about the company. "We manufacture plastic wood made from waste polystyrene, and we are also suppliers of many other types of recycled plastic profiles from other manufacturers. We stock tongue and groove boards,

plastic sheet materials, decking, cladding, ground reinforcement and drainage grids, fencing and gates. In addition, we make a wide range of outdoor furniture often combining different types of recycled plastic into one product. These products include benches, tables, picnic tables, notice boards, to name just a few. We also offer design services and have a large flatbed CNC (computer numerical controlled) machine for cutting and shaping to the CAD design parameters supplied by our customers or created for them by our in-house design team."

As specialists in building supplies and outdoor furniture, one of the main benefits of the products and services provided by Kedel is the long-term investment advantages of recycled plastic. "It never rots, so if you build fencing



or decking with it, you only do the job once in a lifetime. There's no cost of ownership, no maintenance - no costs for labour and materials, or for that matter, replacement costs.

Timber merchants are our main competitors, but wood is becoming increasingly expensive and difficult to source, due to the war in Eastern Europe, Brexit, and COVID-19 causing driver shortages leading to increased transportation costs.

And as everyone knows, the problem with wood is that it needs constant attention to avoid deterioration. Recycled plastic needs nothing more doing with it. Yes, the initial costs are higher, but over a 25-year period, a study by WRAP (Waste Resources Action Programme), in 2000 resulted in recycled plastic proving a more cost-effective material due to the product's extended longevity and zero maintenance properties," Lewis explained.

'Your Housing Association' in South Manchester installed plastic fence panels made from Kedel's recycled plastic about 10 years ago. They haven't had to replace a single fence panel since!" said Lewis.

Kedel's plastic wood was named 'Best Recycled Product' at the National Recycling Awards in 2015 and is an ideal maintenance free replacement for wood and other traditional building materials. Suitable applications include cladding, gables brackets, pediments, fascia boards, rafter tails, finials, fencing and decking. Kedel has over 1000 products in recycled plastics available on its website with a wide variety of profiles to choose from that could save you a lifetime of maintenance and replacement costs.

A notable product in Kedel's sustainable product range is fencing, that comes as fixed or portable panels, or you can buy the materials to make your own. You'll never need to replace a fence again. They are rot-proof and non-absorbent making them very hygienic and easy to clean. They don't chip, crack, or splinter, and are water and frost proof.

Ideal for education establishments and facilities management are Kedel's maintenance-free benches and picnic tables. They look like wood but perform like plastic, and the tables last at least five times longer than wood, making them a very attractive long-term investment. Key advantages include no splinters for little fingers, more hygienic and easier to clean with standard household cleaning products, no painting or preservative applications, and they are very robust and vandal resistant.

"Recycled plastic products are carbon positive, because the waste plastic is reused rather than being thrown into landfill or used as EfW (energy from waste) i.e. burned like any other fossil fuel. They also reduce the use of traditional materials such as wood, leaving the trees in our precious forests where they belong, absorbing the CO₂ emitted by fossil fuels, and concrete whose production is highly polluting and makes the building industry a major contributor to global warming," said Lewis.

Since 2010, demand for Kedel's products have risen by about 30% each year. To accommodate such growth, Kedel has recently acquired additional computer controlled plastic extrusion lines to increase production of its plastic wood. We asked Lewis what Kedel's future plans are, "We plan on continuing to increase production and expand our buildings to house the additional machinery we need to meet this seemingly insatiable demand for recycled plastic products."

For more information, see below.

T 01282 861325
www.kedel.co.uk



The Zero Maintenance Alternative to Wood



Recycled Plastic

- 100% recycled and recyclable
- Impervious to fungi, algae, insects
- Never rots, splinters or cracks
- Graffiti resistant
- UV protected
- Eco-friendly and low carbon
- 100% maintenance-free
- Lasts a lifetime



sales@kedel.co.uk | www.kedeltrade.co.uk | 01282 861325

Your partner in fire safety

DB Fire Safety Limited is situated in Peterborough, and was set up in 2013 by its Managing Director, David Black. David is a qualified fire risk assessor with over 30 years' experience working in the fire safety industry, with accreditation including from the Institute of Fire Safety Managers, 'Register of Competent Fire Risk Assessors.'

David first launched DB Fire Safety Limited after gaining experience working for two years as an independent fire safety consultant.

Recognising the need for his services, David launched DB Fire Safety Limited to provide independent fire safety consultancy, serving clients

throughout the UK. "We are an independent fire safety consultancy specialising in carrying out fire risk assessments," said David Black, Managing Director.

DB Fire Safety Limited's main operations consist of carrying out fire risk assessments and providing fire strategy documents for new buildings under construction.

"In addition to offices and factories, we specialise in carrying out fire risk assessments of schools, residential care premises, and blocks of flats. We also assist building contractors and architects in developing fire & evacuation strategies for buildings

under construction or renovation," added David.

Through the company's industry leading expertise, DB Fire Safety Limited understands the difficulties in navigating fire safety legislation, and as such, the company prides itself on being 'your partner for fire safety'.

Under David's leadership and industry leading expertise in the fire safety industry, the company is well equipped to assist its clients and help to provide their client's businesses with a comprehensive document to identify potential sources of ignition, the likelihood of a fire occurring and the potential impact that a fire would have on its occupants. An assessment is then made of the documented procedures that outline actions that need to be followed in the event of any fire incident, and the required level of training and practice needed.

One of the main advantages of using DB Fire Safety Limited's services is its honest and efficient service, as an independent business without any conflicting interests.

David explained, "The benefit of employing ourselves is that we have no potential conflicts of interest in supplying or maintaining fire extinguishers, fire alarm systems, or installing fire doors etc."

The company also provides in-house training for Fire Wardens and Fire Marshals, as well as online courses, to keep staff and businesses compliant and safe. In addition, DB Fire Safety Limited also provides training courses for general fire safety awareness, which can be carried at the client's premises or via its online E-Learning modular courses. The online courses are a great resource for refresher training.

As the company looks to its future, DB Fire Safety



Limited maintains its overall goal of continuing to provide its clients with the best support possible. David added, "we want to ensure their premises are safe, and that business owners and managers meet their responsibilities under fire safety legislation."

If you would like to find out any further information on the company, please see the details featured below.

T 0800 7720559
enquiries@dbfiresafety.co.uk
www.dbfiresafety.co.uk



DB FIRE SAFETY LIMITED

YOUR PARTNER FOR FIRE SAFETY

We are an independent fire safety consultancy with more than 30 years' experience.

From our office in Peterborough we are proud to service clients' premises throughout the UK. Working with a number of building contractors and architects, we provide Fire Strategy documents for buildings under construction or renovation. We will also carry out necessary Fire Risk Assessments prior to hand-over to the building owners.

Our specialities are residential care premises, schools, and blocks of flats



Fire Risk Assessments

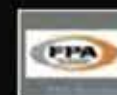


DAVID BLACK
DB FIRE SAFETY LIMITED
Tel: +44 (0)800 772 0559
Email: enquiries@dbfiresafety.co.uk
Web: www.dbfiresafety.co.uk

Fire Strategy Documents



Unit 1, Wittering Service Station
Townsend Road
Wittering
Peterborough. PE8 6AB





DCON
SAFETY CONSULTANTS

Leaders in Built Environmental Safety and Health and Wellbeing Consultancy

Consulting on various aspects of
project design, constructability and
operational lifecycle matters for
local and global commercial clients.

CONTACT US:

DCON Safety Consultants
Suite 5, Fitzwilliam Square East, Dublin 2
Email info@dconsafety.com
Phone +353 (0)1 611 1556

www.dconsafety.com

Latest News

Your partner for material handling



Davison Forklift was established by John Davison back in the mid-sixties, and was sold to Malcolm Harrison in 2018. Based in Shifnal, Shropshire the company maintains a rich history and has grown significantly since its inception, seeing impressive growth year on year.

"We are a machinery hire company specialising in the hire of forklifts, tractors and telehandlers. We sell, repair and hire the aforementioned machines. We are also dealers for Clark, who invented the forklift in the early 20th century. We take pride in providing a very personal service, which is second to none," said Adrian.

Throughout the years, Davison Forklift has explored new sectors and moved its focus into the hire and sales of new product ranges. By consistently expanding upon its product range, has enabled Davison Forklift to be able to discover and move into new sectors and enter higher markets, developing a broader customer base. Davison Forklift has positioned itself firmly at the forefront of the material handling sector, offering a broad range of products, complemented by a highly skilled team of trained forklift engineers that carry out on-site repairs, servicing and health checks. The company specialises in the hire and sales of forklift trucks and is the authorised UK dealers for Clark, Haulotte and Ausa. In addition, Davison Forklift is also part stockists for Clark, Hyster, Samsung, Doosan, Linde, Lansing, Ausa and many more.

In terms of recent developments, Davison Forklift has seen a recent relocation, moving to a new rural location in Yew Tree Lane in Shifnal, Shropshire. This move has helped the company explore new markets and helped to facilitate an investment into new equipment. As such, Davison Forklift has turned its attention to the hire and sale of tractors and telehandlers.

Included in its telehandlers range, the company offers two telehandlers; JCB 540-140 and JCB 535-125. Through JCB's commitment to providing outstanding products for its customers, the brand has flourished, growing from a one-man business into Britain's largest privately owned manufacturer of telescopic telehandlers and industrial forklifts. Both the JCB 540-140 and JCB 535-125 models are equipped with the latest technology and advanced design capabilities, with features such as: low fuel consumption, reduced noise, high torque and power output, total reliability and minimal maintenance.

Regarding its tractor range, the company currently offers one tractor manufacturer available for hire; the New Holland T7.210. New Holland is renowned as a Clean Energy Leader for its active promotion and development of sustainable agricultural technology, offering solutions that enhance efficiency and productivity, while respecting the environment. The T7.210 is a great addition to the company's range and offers a power range of 140 to 210 HP, with a rated engine speed of 2200 rpm.

In other recent developments, Davison Forklift has faced new challenges regarding the COVID-19 pandemic, Adrian explained, "we obviously had a slowdown in the early stages of the pandemic but our sector was quick to recover and we have seen an increase in demand for our products." As Davison Forklift plans ahead, the company maintains its aims of achieving consistent growth and development. Adrian shared, "we are planning to develop our site with a new workshop, showroom and offices. Also, we are looking at renting space to other small businesses and we are investing in new products to enhance our offering, for our customers."

If you would like to find out any further information on the company, please see the details featured below.

T 01902 420 123 (Wolverhampton)
T 01952 915 060 (Telford)
sales@davison-forklift.co.uk
www.davison-forklift.co.uk



Kelly Tanks Ltd

Kelly Tanks offers a range of innovative, cost-effective Concrete Washout and Water Treatment Solutions. Having proven itself onsite, the Kelly Tanks CWS Concrete Washout is the go-to product for washing off Concrete Wagons and equipment. Following its success and demand from the industry, Kelly Tanks has also introduced a washout for separating and treating waste from Hydro Demolition and units have since been sent out worldwide.

Kelly Tanks has also seen its Adsorption Sacks growing in popularity, being used in single or double sack frames, separating wet waste onsite. Recently sites have been opting for the sacks as an environmentally friendly alternative to dumping wet waste in mortar buckets, dramatically reducing onsite waste.

Kelly Tanks also offers user friendly, easy to use,

easy to empty Water Treatment Systems for silt separation and dewatering. Available in various sizes, with interchangeable media, customers have been delighted with the ease in which they are able to operate, clean and empty the systems.

This year Kelly Tanks has launched a Modular Dosing Unit to monitor and control pH levels and/or provide proportional chemical dosing (ie. Flocculants). Its unique design allows the unit to be fitted to most tanks and positioned as required to effectively treat without the need for large specialised equipment. For those without an existing tank, Kelly Tanks can offer a multi-purpose mixing tank to flocculate and/or treat effluent prior to discharge/settlement.

Kelly Tanks also has a bespoke build service and in addition to its fleet can provide complete



onsite Water Management, offering services in consultancy, effluent testing, supply, install and maintenance.

For more info on systems and services, check out the website at: www.kellytanks.co.uk or email: info@kellytanks.co.uk

DCON Safety Consultants



Established in September 2016, DCON Safety Consultants is a leading independently-owned Built Environmental Safety, Health & Wellbeing Consultancy based in Dublin city centre. Managing Director Diarmuid Condon explains more.

The consultancy prioritises and specialises in the highest levels of informed and intelligent advice, senior project resource allocations and compliance assurance. It knows that every project with potential benefits also has potential risks with the art of planning centring on the coordination of these two zones of uncertainty. DCON's team of highly-experienced construction professionals consistently ensure your

best interest and statutory conformity.

DCON is committed to understanding the specific needs, goals and desires of each individual client and project. Upon gaining this special understanding, it commits itself to the implementation of a design and construction management plan that will meet or exceed these requirements. Honesty, integrity, trust and professionalism are the cornerstone of every job.

The company's greatest resource is its exceptional team of technical



construction and safety consultants who provide team-oriented services on an as needed basis. DCON's consultants and alliances with other key individuals and organisations allow it to support clients in all divisions of design and construction safety.

With DCON, the client is assured of top-level focus from its team of professionals. Bringing recent Lessons Learned from its projects, the company has delivered Pre-Planning & Post Planning Health & Safety and PSDP | CDM Consultancy services to multiple sectors, understanding and managing key success factors and risks. DCON Safety Consultants is relentless in supporting safe outcomes and safe design quality to realise your vision. Our controls approach is rigorous, tackling the big issues head on.

T +353 (0)1 611 1556
info@dconsafety.com
www.dconsafety.com



YOUR MATERIAL HANDLING PARTNER

We pride ourselves in supplying a prompt, reliable & helpful service.

DAVISON FORKLIFT LTD

• SALES • HIRE • SERVICE • MAINTENANCE

THE RIGHT SOLUTION FOR EVERY APPLICATION



Over 40 years of experience helps us deliver a first class service to our customers.

Davison Forklift Ltd has been established for over 40 years. We offer a wide range of services including hire, sales, repairs, service, lease purchase & lease rental. Our staff are very experienced and will offer you a reliable & professional service. Call us today for all your forklift truck requirements.

For more information please contact;

☎ 01902 420 123

✉ sales@davison-forklift.co.uk

**Ablow Street,
Wolverhampton,
WV24ERz**

New innovation to the TuffStuff® range; TuffStuff® flexible GRP

Tuff Waterproofing is a provider of waterproofing liquid solutions for flat roofs, which are comprised of GRP, flexible GRP and polyurethane. Using its advanced TuffStuff® formula range, which uses the latest liquid polyester resins, glass fibre mat reinforcement and flexible edge trims, it creates a fully integrated 100% waterproof seamless finish. The TuffStuff® product range is used for various applications and across multiple domestic and commercial environments.

With an impressive history which spans across 30 years' experience, Tuff Waterproofing has invested heavily in research and development, company processes and its team to ensure that its TuffStuff® range of products, continue to exceed expectations and set new standards in flat roof waterproofing solutions. From the company's bespoke premises based in North Yorkshire, Tuff Waterproofing maintains its operations on a national scale, supplying its products through a dedicated Stockist network located throughout the UK.

Regarding its progression over the last year, Tuff Waterproofing is pleased to have continued to progress significantly since 2020. With the impact of the COVID-19 pandemic affecting many industries, Tuff Waterproofing was able to remain open throughout and further developed on its product range during the last 12 months.

We caught up with Greg Gimenez, Managing Director of Tuff Waterproofing and asked him about the company's developments over the last year, he stated that, "We have progressed very well. We didn't have to close during the Pandemic because we are in the construction industry, so the government's directive was to stay open. We have mostly remained the same, we're always trying to develop new products and develop our existing products. We're quite happy with the overall year and foresee further progression for 2022."

The company has continuously accumulated growth year-on-year and established an enviable reputation,

becoming a key figure in the GRP flat roof market and resulting in TuffStuff® becoming the UK's premium designer and supplier of heavy-duty GRP waterproof flat roofing systems.

Regarding its team, TuffStuff® maintains a dedicated product development team that work closely with its customers to produce a consistently, evolving product range that is suitable for multiple flat roof applications. This commitment to continuous development is echoed throughout the company and its dedicated team of UK based product developers work with UK manufacturing facilities, with the ambition of pushing and setting new standards of GRP roofing systems, to new levels.

A vital part of the company's business is its exceptional technical support service and Tuff Waterproofing ensures it provides premium quality and agility, in responding to and resolving customer queries professionally, efficiently and to the highest standards. The company prides itself on providing the highest standards of customer service and its main ambition is to instil confidence in its customers, that they feel fully supported.

"As I have always said, the life blood of this company is the service, exceptional training and technical support that we give. It's more than just providing products, it's all about the service and support," Greg added.

In terms of the company's most recent developments this year, Tuff Waterproofing has further expanded



its TuffStuff® product range and is now offering its latest GRP roofing innovation; TuffStuff® flexible GRP. TuffStuff® flexible GRP is a single resin solution that provides an exceptional combination of versatility and durability. It's extremely quick to lay and does not require stripping or re-decking of the roof, saving customers both time and money. It can be applied to a variety of surface types and structures including vertical sections.

Requiring only two coats and 225gsm reinforcing mat, it can be applied within two hours. The TuffStuff® Flexible GRP forms a highly flexible, extra tough and seamless waterproof membrane, making it an ideal solution for areas of heavy-duty foot traffic. The solution can be applied directly to felt, asphalt, single-ply, GRP, concrete, timber or metal. Its highly flexible, extra-tough and seamless waterproof membrane makes it reliable when added to vertical sections without the concern of sagging. Furthermore, the solution is a fast-curing system with walk on time of between 30-60 minutes. Once laid and whilst curing, the product is showerproof.

Specifically designed for durability in mind, the TuffStuff® Flexible GRP is extremely robust with one coat needed for a 10 year system or two coats required for 20 year system, and is crack resistant with no risk of weak points. The 20 year system qualifies for a 20 year guarantee on materials.

On the back of its successful launch of TuffStuff® flexible GRP, Tuff Waterproofing is planning to further feature its new product at various tradeshow throughout 2022. These include: UK Construction Week 2022 in May, in London and UK Construction Week 2022 in October, in Birmingham.

As the company looks towards the future, Tuff Waterproofing foresees many challenges that they will have to overcome, but believes firmly that it has the right structure in place to provide the company with the perfect platform to be able to consistently respond and evolve its product range, while providing outstanding support to its customers.



Indeed 2021 has seen impressive growth and development for Tuff Waterproofing and the company anticipates much more progression, leading on from its new product launch. After what many industries have deemed as a challenging year in regards to the COVID-19 pandemic, Tuff Waterproofing has showcased its industry leading expertise and is pleased to have been acknowledged for their hard work.

For more information about the company or to view its range of products, please see the details below or alternatively, contact them directly on the number stated.

Contact
T 01977 680250
www.tuffstuff.co.uk



FLEXIBLE GRP

Providing an exceptional combination of versatility and durability. Quick to lay, with no need to strip or re-deck a roof, this fast-curing system saves time and money.

It's a single-resin solution which can be applied to a multitude of surface types and structures including vertical sections.

With two coats applied within one hour, TuffStuff® Flexible GRP will form a highly flexible, extra tough and seamless waterproof membrane - can be a solution for areas of heavy duty foot traffic.

TUFF STUFF FLEXIBLE GRP



www.tuffstuff.co.uk

T 01977 680250
orders@tuffwaterproofing.co.uk

Steel buildings to suit all budgets

Founded by Dave O'Brien in August 2017, Castle Steel Buildings has evolved from a basic start-up, operating on what was essentially a franchise model, to a rapidly growing construction company with a permanent install team and a developing back-office operation. Previous to the company, Dave O'Brien had worked in the steel construction industry as an installer for over 20 years. After many years Dave was keen to build his own business that offers bespoke steel buildings with a guaranteed installation option. On the search for a business partner who could run the administration and logistics side, Dave approached John Rosling, who had a number of years' experience in public and private sector management. Since joining, the business has grown in strength at a fast pace.

Today, Castle Steel Buildings is well-known as an industry leader in its field. Offering a number of services to suit every budget including steel buildings for agriculture and rural, commercial and industrial, garages and sheds, as well as cladding installation. Understanding that customers prefer a personalised service, Castle Steel Buildings is committed to ensuring 100% satisfaction

from start to finish and prides itself on its; affordability, to offer cost effective light weight composition of the buildings designed to reduce production and installation costs; versatility, with a range of buildings to suit every application; and top British quality, endeavouring to always support British economy. all Castle Steel Buildings materials comply with British Standards BS 6399(pt 2) and exceed ISO9001-200.

"These are among the many qualities that set us apart from our competitors," mentioned John Rosling, Director. COVID-19 has left a dramatic impact on steel production over the last 12 months, with many steel mills across the world shutting down. As such, steel suppliers are running low on stock, the price of steel has risen and there are incremental delays to customer orders. Castle Steel Buildings has worked hard to ensure this implication has not affected its production and most of all, its service to its customers.

"One of the major things we've noticed over the last year is that many people are put off having their steel building because of the cost of raw materials,

something that has increased enormously with the pandemic and global shutdown. We've met this challenge by partnering with Peregrine Finance in York to offer a bespoke finance solution. This is a great option for companies looking to get their projects off the ground quickly while spreading the cost over time," said John. With more to offer in its arsenal, we asked John what the company's future plans were, he answered, "alongside a determined go for growth mindset, we're focussed on developing our range by introducing hot rolled steel designs. Cold rolled steel is inexpensive and effective but there are some limitations in the scale of building that can be done in cold rolled steel."

T 01302 301402
info@csbuildings.co.uk
www.csbuildings.co.uk



Stay safe with lightning protection

Here at Building Update, we are proud to announce South West Lightning Protection as our Company of Choice 2022. South West Lightning Protection provides a number of services throughout the UK including lightning protection, early streamer emission systems, upgrades of older systems, earthing services and design, safety line testing and inspection of horizontal safety line systems and PPE. Established in 2014, South West Lightning Protection was created by Gary Libby who has over 40 years' experience in the industry. Located in Plymouth, the company also has an office in Scotland. "Our core service is lightning protection installations and testing; we also design new systems. As we are a small company in comparison to our competition, we strive to provide a personal service to our clients." Stated Gary.



In recent news, South West Lightning Protection has commenced testing of roof mounted horizontal cable based mansafe systems, permanent ladders, guard rails, and safety anchors. These services are provided individually from the company's lightning protection services, and to save the client money, can be combined. South West Lightning Protection work throughout the UK to assist its clients with their project requirements regardless of their location. Within its lightning protection service, South West Lightning Protection is able to offer a full installation and testing service, including BSEN62305 systems, BS6651 upgrades, NFC 17 102 early streamer emission systems and BS7430 earthing systems. Some recent projects have included chimney upgrade works in Cumbria, new air termination networks in London and a new roof tape system in Plymouth. South West Lightning Protection record all test conditions and results, and a reminder is sent out before the next test is due.

The system South West Lightning Protection use provides an alternative solution to protecting structures where the installation of a British system is not a feasible or a viable option. Some benefits of its early streamer emission device include a more aesthetically pleasing device as the system only requires two down conductors and earth terminations to provide a path to earth. It is cheap to install and maintain, and as the number of roof conductors, down conductors and earth terminations are reduced, the system has a lower carbon footprint. Its clients include electrical contractors, ministry of defence, NHS, companies in the sectors of water, commercial, telecoms and facilities management, as well as individuals. The company holds a health and safety accreditation by SafeContractor which audits the company training and safe systems of work. All company engineers are CITB card holders for the work they undertake, and DBS checked.

Inevitably, South West Lightning Protection experienced a disruption in the industry from COVID-19, however, as the company provides a safety critical work to the ministry of defence, it was classed as an essential business, so work was able to carry on at a reasonable level. "We have produced a company COVID-19 policy which protects both SWLP operatives and clients. We work with clients to ensure we are in compliance to any restrictions on work which may be stipulated by customers." Stated Gary. As South West Lightning Protection continue to grow within the lightning protection sector, the plan is to provide long term employment to its existing work force whilst adding new members of staff. "Whatever your requirements, we're here to help." Mentioned Gary.

T 07807 334441
south@lightningconductor.org
north@lightningconductor.org
www.lightningconductor.org





STEEL BUILDING SOLUTIONS

+ SINGLE SKIN + COMPOSITE + ROLLER DOORS + WINDOWS +



INDUSTRIAL



AGRICULTURAL



DOMESTIC

+ SKYLIGHTS + PERSONNEL DOORS + INSTALLATION OPTIONS +

GET A FREE ON-LINE QUOTE AT

WWW.CSBUILDINGS.CO.UK

OR CONTACT US ON

01302 301402

INFO@CSBUILDINGS.CO.UK



South West Lightning Protection

www.lightningconductor.org

Airport Business Centre
Estover
Plymouth
PL67PP

Also located in Scotland,
& London



Formed in 2014, and having over 40 years of expertise in the lightning protection industry, South West Lightning Protection, provides a full range of services from our office locations in the UK. With our trained operatives we are able to provide a full range of services, from conception to completion, and with our Safecontractor accreditation you can be assured works will be carried out adhering to all relevant health and safety requirements.

Whatever your requirements - we are always pleased to help

- Lightning Protection risk assessments
- Installation & Design by accredited engineers
- Test & Inspection (BSEN62305, BS6651, NFC 17 102)
- Safety Line systems testing



Tel: 07807 33 44 41 Web: www.lightningconductor.org

Email : North@lightningconductor.org — South@lightningconductor.org

Concrete Channel with Basalt Fibres – New Era Begins for Hauraton

Hauraton makes concrete material even more efficient for modern drainage technology by enhancing the formulation with natural basalt fibres. The addition of mineral or textile fibres increases maximum stability, strength, and impact resistance. By amplifying the impact resistance, the more robust and durable the product. This is particularly important for components that are exposed to considerable dynamic stresses, in this case, drainage channels subject to vehicles at high speeds or regularly trafficked by heavy loads.

Basalt Fibres: Natural and Sustainable
Hauraton's new era in concrete production by utilising basalt fibres has not only created a durable building material, but also one that is 100 percent natural. The basis of basalt rock is available all over the world in large quantities which is formed naturally on the earth's surface. By combining

basalt fibres with the well-known material concrete, both the structure and the service life of the product is increased.

Mineral Mixture: Easy to Recycle

Since the end product is a purely mineral mixture, there is no need for material separation during disposal. This protects the environment as it is simply fully-recyclable at the end of the product's life cycle.

Convincing Strong Properties

Basalt fibres have outstanding properties. They can withstand temperatures of up to 800°C and are highly resistant to alkalis, acids, salts, oxidation and radiation. The effects of adding basalt fibres to precast concrete elements gives even more of a dimensionally stable, resistant and durable structure. Drainage systems made of basalt-reinforced concrete will assure longer performance.

Basalt Fibres are Versatile and Climate-Friendly
Basalt fibres are mineral fibres that have a higher melting temperature, better resistance to water, acids and alkalis, and more positive flexural strength. All this makes basalt fibres attractive in drainage technology, but also numerous other applications in construction.

Given the stricter climate targets, the energy consumption during production also clearly speaks in favour of basalt fibres, as basalt it has the lowest CO₂ footprint.

Contact
www.hauraton.co.uk

FASERFIX CONCRETE:
NATURALLY BETTER



30 years of experience, expertise & excellence

Bio-Dynamics specialises in building tanks for wastewater treatment plants, biogas plants and industrial and agricultural applications. The company maintains its main head office in Deinze, Belgium, with its UK Division, Bio-Dynamics Tanks Ltd based in Thurnscoe, near Rotherham, and Monostore bv, based in Kampen, The Netherlands.



Bio-Dynamics has gained an impressive amount of expertise, built from over 30 years of experience in the treatment of industrial waste water and environmental engineering. Bio-Dynamics specialises in the building of round tanks with a diameter starting from 15ft (5m) to 164ft (50m) and up to 66ft (20m) in height, with or without a roof, underground or above ground level.

"Our company is the preeminent European designer and installer of in-situ poured reinforced concrete tanks, used for the storage of, and anaerobic digestion of, a wide range of on and off-farm liquids and bio-wastes, such as livestock slurry," noted John Lyndon-Taylor, Sales Manager. The primary focus of Bio-Dynamics is the supply of concrete anaerobic digesters and associated tanks to the Biogas renewable energy sector. For the agriculture market, the company is able to provide biogas-units (in collaboration with key Technology Providers) based on the size of the farm, which are mainly fed with manure and other substrates that occur on the farm.

"The main benefit and service we provide is a full design and supply capability inhouse, maximising the experiences of decades of onsite operations, tailoring the product to our clients exacting requirements. As the company looks to the future, Bio-Dynamics plans to continue focusing on its core activities, working with strategic partners and technology providers to enhance and sustain the burgeoning biogas sector, for years to come.

"Our exemplary record of continued sustainable growth and investment in the ever more important renewable energy sector, provides our clients the confidence and trust that their project will be met, within budget and to programme," mentioned John.

Bio-Dynamics are keen to discuss any of your needs for liquid containment, and its technically qualified staff are ready and waiting to receive your call to start the process of developing a solution.

www.bio-dynamics.be
www.bio-dynamics.co.uk
John's Mobile: 07956 854669

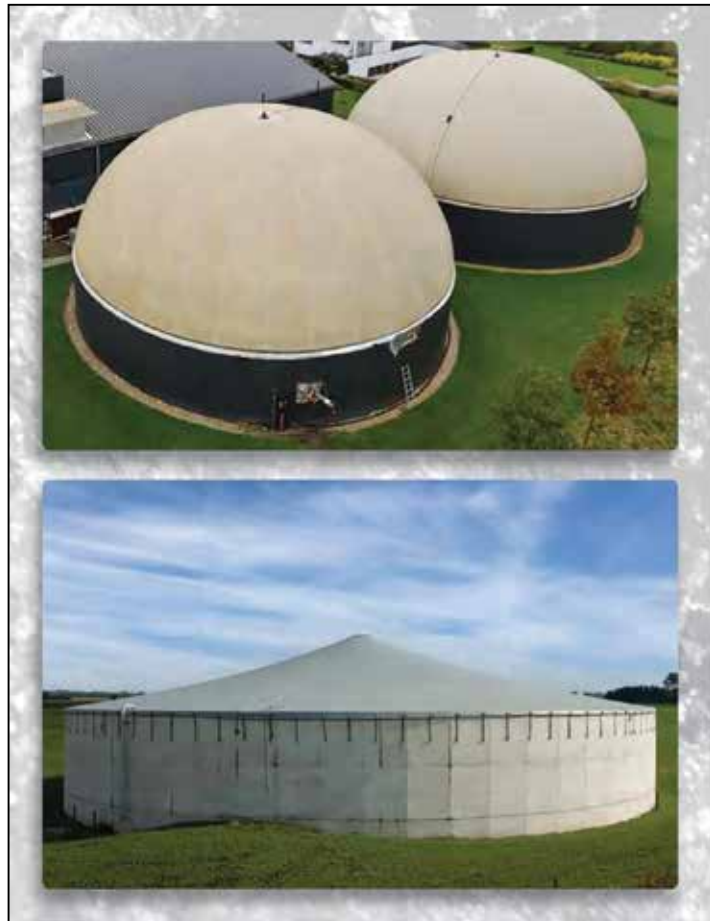


YOUR FIRST CHOICE FOR CONCRETE TANKS



Poured in-situ
concrete tanks and bases
for lifetime, trouble-free
operation

Albion Drive, Lidget Lane Industrial Estate
Thurnscoe, South Yorkshire S63 0BA
0330 808 0021
JLT@bio-dynamics.co.uk
www.bio-dynamics.co.uk



H.D. Services Ltd: Sewage Treatment and Water Boreholes

Founded in 1984 H.D. Services Ltd. aim to provide the highest quality percussion drilled boreholes, sewage treatment systems and Open-Loop ground source heat pump installations in the Southeast. Feasibility of any project can generally be confirmed upon receipt of a site postcode.

We offer a one stop shop for self-builders, developers, contractors, consultants and architects, providing waste and drainage solutions, independent water supplies and renewable heating options – all specifically tailored to meet individual needs and suited to the geology of the Southeast.

Sewage Treatment, Boreholes and Soakaways

We have been involved in the design, supply and installation of sewage treatment systems for over 30 years. We can either provide package solutions or we can design bespoke systems to meet individual client needs.

Projects undertaken throughout the southeast range from small solutions for single households to larger scale solutions for estates, business parks, farms, schools, caravan sites, hotels and public houses.



We offer a support service for consent to discharge applications to the Environment Agency – a requirement when installing sewage



treatment systems. All our boreholes are constructed using the cable-tool percussion method - preferred by the Environment Agency (EA) when drilling the chalk aquifer – and are logged with the BGS. Our underpinning ethic is that we want to protect the aquifers from which we make our living.

Ground Source Heat Pumps

We are award winning installers of Open-Loop GSHP installations. These systems utilise ground water as a heat source. Groundwater is pumped from a water supply borehole directly to the heat pump where temperature is extracted.

The water is then returned to the aquifer, normally via a buried harvesting tank where it can start to regain this temperature. As ground water is utilised, there is the option of a potable water supply (subject to analysis

and suitable filtration) or irrigation.

The heat pumps we install are manufactured by a British company and are MCS accredited.

We achieved regional success in 2015, 2016, 2017, 2018 and 2019 at industry awards. In 2020 we won the REA Pioneer Awards and this year we have achieved recognition at the East of England Energy Efficiency Awards, winning 2 categories as well as receiving a Special Commendation for one of our renewable heat installations at the 20/21 National Energy Efficiency Awards, which were held on the 18th February 2022. Having never entered the national awards before, we are extremely proud to have been recognised for our involvement in this project.

The company is proud to employ land drillers, electricians, plumbers, civil engineers, heat pump engineers, graduates and fellows of the British Geological Survey.

We are members of the WDA, GSHPA, REA, EEA, NaCSBA and are ISO 9001, 14001 and MCS accredited.

For more information, please visit:
www.hdservicesltd.co.uk



With over 30 years experience, we offer bespoke solutions for the domestic market across the South East.
Feasibility of a project can usually be determined with a site postcode.

COVID-19 SAFE WORKING

AWARD WINNING RENEWABLE HEAT INSTALLATIONS
Open-Loop Ground Source Heat Pumps could meet all hot water and heating needs by utilising ground water as a heat source.
Ideal for installation in new or self-builds.

WATER SUPPLY & SOAKAWAY BOREHOLES & DRAINAGE SOLUTIONS
Independent water supply for irrigation or consumption*
Soakaway drainage fields and other drainage solutions
*subject to analysis and suitable filtration

SEWAGE TREATMENT SYSTEMS
We can provide package plant or bespoke systems
All systems are designed to meet the needs of individual clients and comply with strict discharge legislation.
Servicing contracts are offered on all installations.

H.D. services LTD
enquiries@thehdgroup.co.uk | 01494 792000 | www.hdservicesltd.co.uk

The South West's Number One Timber Building Company – MAC Cabins

In this issue of Building Update, we are proud to announce that we have selected MAC Cabins as our Company of Choice.

MAC Cabins Limited is a fast-growing Timber Building company based in Okehampton, Devon, with over 30 years' experience in the construction industry.

Proud to be the providers of one of the largest selections of; Timber Buildings, Log Cabins, Leisure/Holiday Cabins & Glamping Pods, in the heart of the South West of England.

To complement the extensive ranges of timber buildings, MAC Cabins also offers a vast variety of other Timber Frame & Modular Frame options, providing one of the widest selections of timber building options, within the market-sector.

For all timber frame styles, MAC Cabins works with self-build and custom-build projects, where the initial design has already been completed with architects. We help to guide small to medium-sized developers, on sites of single or multiple plots, to identify the best way to convert vision into reality.

MAC Cabins continues to expand its vast portfolio of designs and build options, allowing you to select the perfect combination of style, size and price, confident you will find the perfect selection to meet your growing demands.

With every building, you will receive a structure that has a higher standard specification than most other comparable products.

T 0800 999 1564
help@maccabins.co.uk
www.maccabins.co.uk



30 years of joinery excellence – Happy Birthday to us!



Bluerun Ltd is dedicated to manufacturing top quality, bespoke custom-made joinery for the domestic and commercial markets. All of our joinery is manufactured on premises using hardwood, softwood or sheet materials. As well as offering finished goods sprayed to a primed or painted finish, Bluerun Ltd also offer other treatments and installation services for some products.

Bluerun Ltd is a family run business and was established in October 1991 by its current Managing Director, John Jones. Based in Wimbish, just outside Saffron Walden in Essex, its factory covers 7,000 sq. ft., and can manufacture in hard or softwoods, and veneered and painted panels. Its modern spray point and lacquer facility enables products to leave the factory in a fully finished state. The ethos surrounding the company boasts comradery, team work and dedication to the customer. Here at Bluerun Ltd we promote quality, family and pride in all that we do. The bespoke items manufactured in our workshops are made to a high standard thanks to the joiners who make them. The whole team take pride in their work.

A proud moment, in 2019, John Jones' daughter was the most recent addition to the board. From humble beginnings, the company has gained remarkable growth within the building trade and is well known for its top-quality joinery. Our bench joinery team is small and has extremely high standards. Whilst we use power tools and machinery, there is no CNC or computer aided design, or drawings used. We pride ourselves on being 'old school,' and still use hand tools to finish off many of our bespoke items. Everything is designed in-house, that is if no drawings are supplied by the clients.

For the commercial industry, the majority of its production is for commercial builders and manufacturing. Bluerun provides all type of commercial joinery products from large-scale repeat production runs of windows, frames, and doors, to both large and small-scale customers for internal and external projects. We also produce high quality joinery to meet the exacting standards of conservation areas or heritage sites.

We also provide domestic bespoke joinery from custom door replacements to bespoke furniture. Our portfolio includes decking, balcony balustrading, and gazebos as well as replacement stairs, banisters, mouldings or bespoke cabinets and bookcases for interiors. Bluerun Ltd has even designed and produced a custom-made Wendy house for a private client. Whatever your joinery needs, Bluerun Ltd can provide exactly what you're looking for.

October 1991 marks the company's 30th anniversary of incorporation – what a tremendous achievement made by all. We are all extremely proud. The company couldn't have made it this far without our joinery team and our loyal clients we have worked with over this time. Some employees have worked with John since the 1970s, at a previous company, and we believe that we have a great and loyal team.

T 01799 599995
dee@bluerunltd.co.uk
www.bluerunltd.co.uk

MAC Cabins Classic Post & Beam Garages & Car Ports, available in Oak or Douglas Fir, with or without accommodation above

MAC Cabins Pullman Glamping Pod Available now for immediate delivery. An example of our Glamping Pods & Timber Buildings available for the holiday and leisure industry.

For Timber Frame Options, MAC Cabins work with Self Builders and Developer/Builders with their custom design projects, to identify the best way to convert vision into reality.

Annexe Buildings
Garden Rooms
Garages & Car Ports
Home Offices
Glamping Pods
Post & Beam Buildings
Log Cabins
Timber Lodges
Timber Frame

Finance available with Approved Finance, on all our buildings and timber products. Finance subject to status.

UNIT 4, CRANMERE ROAD, EXETER ROAD INDUSTRIAL ESTATE, OKEHAMPTON, EX20 1UE

0800 999 1564

www.maccabins.co.uk

LE TONKINOIS

NATURAL OIL VARNISH

Le Tonkinois is a traditional natural oil based varnish. It is perfect for outdoor, indoor or marine use. With Le Tonkinois varnish the options really are endless.

Combining unrivalled long lasting protection on materials including wood, metal, cork, stone, teak, mdf and grp Le Tonkinois varnish leaves absolutely no brush marks and will restore the beauty and colour of the wood. Flexible enough to move with the timber and able to withstand abrasion and impact, Le Tonkinois varnish is resistant to boiling water, UV, petrol, diesel and sea water. It won't crack, chip or peel off, making it perfect for all outdoor purposes as well as indoor.

www.letonkinoisvarnish.co.uk
01628 548840

Bluerun Limited

quality bespoke joinery since 1991

Quality, custom made joinery

Whether you're looking for a one-off custom made gate or a production run of doors and windows for a new housing development, perhaps a new interior for your pub, restaurant or office, we can deliver exactly what you're looking for.

Contact us to discuss your requirements

01799 599995 **dee@bluerunltd.co.uk** **www.bluerunltd.co.uk** **f bluerunltd** **@ bluerun_joinery**

The Best in Brickwork

In this issue of Building Update, we are proud to announce that we have selected Bulmer Brick and Tile Company Ltd as the recipient of our Company of Choice Award 2022.

Bulmer Brick and Tile Company Ltd is a small, family run business, that specialises in all aspects of brickmaking. The company uses the traditional process of brickmaking and drying which dates back to the Middle Ages.

The company's bricks are made from the finest London Clays, and are hand-made, using traditional methods of making and drying, and are fired in a down draught kiln. This process creates the bricks distinctive finish that blends perfectly with original brickwork in historical buildings.

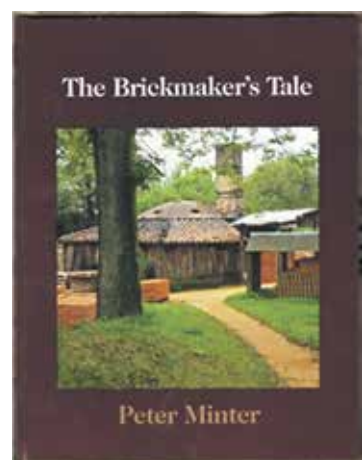
Finding the right brick aesthetic to match with a historical building, can be a challenge as many historical buildings have their own, unique brickwork size

and shape, meaning most facing bricks have been custom-made for the building. With industry leading skills and expertise, harnessing the company's traditional way of brickmaking, Bulmer Brick and Tile Company Ltd is able to deliver the correct size, style and colour to blend seamlessly with the original building, preserving the traditional design of the building.

Bulmer Brick and Tile Company Ltd facings and specials can be made with



Peter Minter: The Brickmaker's Tale



Peter Minter and his son Tony are well-known for their father and son business, Bulmer Brick and Tile. The family-run business has successfully been running for over 80 years and is extremely proud to say they have excellent expertise and knowledge in this industry.

Peter Minter wrote his own book, The Brickmaker's Tale, which entails a unique history of the Bulmer Brickyard and the craft of brick-making. Bulmer Brick and Tile pride themselves in saying that they are the most traditional in the UK that still uses methods to make bricks which dates all the way back to 1450. The first section

of The Brickmaker's Tale focuses on the early history of the site, the second part of the book explores from 1936 onwards when the Minter Family acquired to the company.

Finally persuaded by family and friends, Peter Minter wrote a book that recorded some of his unique knowledge and memories in a book. The book highlights the story of the Brickyard and the people that have worked there throughout the years. The Brickmaker's Tale touches on the recreation of historic bricks for National Trust properties which include Hampton Court Palace and Blickling Hall in Norfolk, not to mention the bricks for the extension of St Pancras Station in London.

The Brickmaker's Tale is available from local bookshop Kestrel in Sudbury Suffolk or direct from Bulmer Brick & Tile Co Ltd.

Contact
T +44 (0)1787 269232
bbt@bulmerbrickandtile.co.uk
www.bulmerbrickandtile.co.uk



Traditional brick production specialist

The Bulmer Brick and Tile Company, based in Suffolk, is a family-run business established in 1936. With over 80 years' experience in the industry, the English company truly is a master of its craft.

The Bulmer Brick and Tile Company is renowned for its traditional handmade bricks which, fired in a down draught kiln, have a distinctive finish that blends well with the original London clays bricks. The beauty of the Suffolk company's bricks lies in their traditional production method. The bricks are made from clay dug from the same clay seam used since Tudor times. The wealth of experience amassed by the company coupled with their respect for the process is what separates The Bulmer Brick and Tile Company from the competition.

Having produced bricks for reputable clients such as the National Trust, English Heritage and Historic Royal Palaces, the company is able to lend its services to both private and commercial developments. Its facings and specials



can be made with almost any texture; with 150 different sizes of facings and a range of over 5,000 special shapes, including all standard plinths, squints and copings and extends to purpose made chimney bricks, terracotta, mullions, jambs, floor bricks, pammets, decorative plaques, garden edgings and a full range of rubbing blocks.

Aside from offering a wide range of clay brick solutions, The Bulmer Brick and Tile Company further offers a select number of additional materials. It is a stockist of Singleton Birch Natural Hydraulic Limes and Lime Putty, available in a range of strengths – NHL2, NHL3.5, and NHL5 – and sold in 25kg bags or 1 tonne bulk bags. Lime has proven to be the material of choice when laying the brick specialist's bricks and especially in the case of conservation work, with its natural strength and tendency to give 'movement' in the construction process favourable.

Among the additional materials offered are lath, chestnut lath and riven oak supplied in bundles, used for plastering or for roofing and the application of shingles. Further, The Bulmer Brick and Tile Company offers sheep's wool insulation, an efficient and eco-friendly insulation solution.

T 01787 269232
bbt@bulmerbrickandtile.co.uk
www.bulmerbrickandtile.co.uk

almost any texture, from coarse veined to smooth, and offers 150 different sizes of facing and over 5000 special shapes, including all standard plinths, squints and copings. In addition, the company also extends to purpose made chimney bricks, terracotta, mullions, jambs, floor bricks, pammets, decorative plaques, garden edgings and a full range of rubbing blocks.

Working in collaboration, the company works closely with builders, architects and surveyors where possible, to ensure that the bricks they produce are the best match for the building and meet their clients' requirements. This is just one of the ways that the company showcases its commitment to providing outstanding levels of service for its clients, and Bulmer Brick and Tile Company Ltd ensures that each client receives a personalised service, tailored to find them the best brick solution.

Bulmer Brick and Tile Company Ltd's services, attention to detail and outstanding level of customer service, has helped the company gain an industry leading reputation.

As such, the company is highly recommended for its consultancy services on anything brick related. Included in its consultancy services, the company offers: site assessments, brick surveys and writes reports to Conservation Officers, English Heritage, Local Councils and other bodies.

Bulmer Brick and Tile Company Ltd has worked on many varying, large projects, including for the National Trust, English Heritage and Historic Royal Palaces. Equally, the company has worked on many smaller scaled projects and private work, which it approaches with the same, high calibre of quality service.

If you would like to find out any more information, please see the details below.

T 01787 269232
www.bulmerbrickandtile.co.uk



The Bulmer Brick & Tile Co Ltd

T 01787 269232
bbt@bulmerbrickandtile.co.uk
Please visit: www.bulmerbrickandtile.co.uk

THE BULMER BRICK & TILE COMPANY LTD

The Brickmaker's Tale
by Peter Minter
Order your copy today

Bulmer bricks are made from the finest London Clays, dug from our seams almost continually since Tudor times. All Bulmer bricks are hand made, using traditional methods of making, drying and are fired in a coal burning, down draught kiln. We are a small family business continuing the traditions of brickmaking on this site dating back to the Middle Ages.

We work on large projects for the National Trust, English Heritage and Historic Royal Palaces, but are just as proud of some of the small private work undertaken by individuals.

**The Brickfields, Bulmer, Sudbury,
Suffolk CO10 7EF**
Tel: 01787 269232
Fax: 01787 269040
Email: bbt@bulmerbrickandtile.co.uk

Demon Designs: Experts in glass

Established in 2011 by Dominic Meakins, Demon Designs specialises in bespoke solutions for glass structures, offering consultancy, design and build services to exceed its clients' requirements every time. Fuelled by a commitment to excellence, the team at Demon Designs always goes the extra mile to ensure complete customer satisfaction, no matter what the project size.

One of Demon Designs' key advantages is its comprehensive service, offering everything the customer might need for their project. "Many of our customers want the hassle removed. For example, if they want a walk-on glass floor installed, they don't want to get a builder in to cut the hole, a plasterer to make good and a decorator to finish it off. We can do the lot, including engineers' calculations." Recently, Demon Designs joined Check-a-trade, with a view to obtaining more domestic customers in preparation for the uncertainty of the current commercial

market. "This has had some success, but we still find that the vast majority of our customers are either returning customers or new customers by recommendation, and you can't really get a better endorsement than that!"

Indeed, as well as a loyal customer base, this commitment to customer satisfaction has resulted in impressive successes for Demon Designs over the past eight years, and this year has been no different. "It's been an interesting year for us," Dominic told us. "We have seen a shift in the type of projects we win, moving away from large commercial fit-out projects towards domestic 'Grand Designs' type projects and installations. In the coming years, Demon Designs is looking to complete more complex projects, to help the company grow even further and build upon its achievements since its inception eight years ago. "We want to take on more bespoke projects, big or small. I personally

believe that you can only improve by pushing your boundaries, and this is true for business also. We are constantly taking on more challenging projects, often from other companies who don't want the risk. The great thing about this is that we often work for companies that would be considered competitors in other fields."

Indeed, Demon Designs' future ventures are highly anticipated as it continually develops and improves upon its capabilities. The company is always interested in taking on new customers, either commercial or domestic, so get in touch using the details below or head to the website if you wish to discuss your ideas.

Contact
T 01903 733206
info@demon-designs.co.uk
www.archglass.co.uk



Plants and Sundries to the Trade

Based in Lower Withington, Near Macclesfield only five miles from junction 18 M6, Four Oaks Cash & Carry is now the largest Horticultural 'one stop shop' in the UK!



Since day one, we have attained our impeccable range and service to our customers propelling us far in front of our competitors. The Manager, Marlon Kent, who has over 30 years of plant and tree knowledge, handpicks our stock. Pre-COVID-19 restrictions Marlon would travel to Italy and Spain in the early months of the year, ensuring only the best quality of stock is acquired. This stock would include specimen trees, plants and sundries to the trade. Nowadays, as with most things, this is done via the internet, quality is not compromised as the stock is now 'visually picked.'

Four oaks is a specialist supplier of Mediterranean plants, our stock includes Olives and Palms in pots from 1 litre up to 1,000 litres and these are available all year round. We have an extensive product line of over 1,500 lines of trees and shrubs on display from starter plants to specimen sizes, as well as young bedding and basket plants for which we are historically known.

Catching site of the recent demand for outdoor seating, specifically from the leisure industry, Four Oaks made the recent decision to begin to stock high quality garden furniture, and this decision has been a resounding success through its sales. Furthermore, we have extended our range of pots, which include terracotta, glazed and authentic wooden half whiskey barrels, just a few of the exciting addition to our ever-growing product line.

We also offers compost and feeds, a wide range of Draper garden tools, hanging basket and liners, pots, bowls and planters, a range of Meadowview stone, sundries pots and bowls, a large range of sundries are available as well as a new range of aggregates being added to the company's Autumn stock. Seasonal specials are common at Four Oaks, alongside its superb selection of planted hanging baskets and patio pots.

Four Oaks stock has one of the widest ranges in the North West for shrub and specimens, which can be used for commercial and amenity landscaping. Our Italian plant range has over 70 different varieties enabling customers with a more complete range of choice, combined of small shrubs, large specimens and arches, to the more formal structural specimens.

For more information, please see the details below:

T 01477 571797
www.fouroaks-nurseries.com



Structural and Architectural Glass

Demon Designs offer a comprehensive range of products and services to a wide variety of construction sectors. From design and consultancy work to full design and build, we can provide a custom made service to meet your requirements. Specialising in unique glass and metal structures, we can supply and install totally bespoke solutions or standard off-the-shelf products.

- CAD Design Services
- Toughened Glass
- Laminated Glass
- Glass Worktops & Coloured Splashbacks
- Balustrades
- Juliette Balconies
- Bespoke Shower Screens
- Sliding Glass Doors
- Flush Glazed Doors

Please contact us on: 01903 733206

Email: info@demon-designs.co.uk | www.demon-designs.co.uk



Horticultural News



Plants & Sundries for the Trade

Hedging - Topiary
Buxus - Laurus Nobilis
Shrubs & Trees



Huge range of shrubs from 3 Litre - 15 Litre
Alpines & Perennials. Seiont Nurseries
Young Plants. Pack bedding & Vegetables.

Added Value Lines - April onwards:-
Superb range of Hanging Baskets,
Planted Patio Pots, 13cm potted Zonal Geraniums,
Fuchias, Osteospermums, Marguerites & Standard
Fuchias in 10 litre pots.

Sundries - Garden Stoneware
Yorkshire Flowerpots - Draper Tools

We now stock Garden Furniture
NEW Italian and Spanish Stock
Extensive Pot Range available



The largest horticultural "One Stop Shop" in the UK

FOUR OAKS CASH & CARRY

Longshoot Road, Lower Withington, Macclesfield, Cheshire SK11 9DX
Tel: 01477 571797 **Fax: 01477 571314**
marlon@fouroaks-nurseries.co.uk www.fouroaks-nurseries.com

Landscaping News

Dolwin & Gray

Established 1969



Professional, fully trained & qualified
Tree Surgeons & Landscapers in & around
London & the South East.

Hedge, Copse & Woodland planting
(Transplants to semi-mature)

Cultivation & Seeding Paddocks etc Turfing.

All aspects of Tree Work, Surveys and Reports to BS5837:2012
Trees in Relation to Design, demolition and construction –
Recommendations.

Tel: 01892 853232 • Fax: 01892 853434
Email: enquiries@dolwinandgray.co.uk
www.dolwinandgray.co.uk

Water Treatment tanks and systems

2021 was a successful year of Concrete Washout and Water Treatment Systems for Kelly Tanks across the UK, Ireland, New Zealand, Sweden, Spain, France and Denmark, affirming their solid reputation for providing innovative and cost-effective solutions to the construction industry.

The well-established CWS Concrete Washout has remained the product of choice for washing off concrete wagons and equipment onsite whilst demand for Water Treatment tanks and systems for filtration and/or separation has continued to grow. Kelly Tanks remain consistent in releasing new products to help ensure safe and compliant waste-water treatment on building sites across the UK and overseas including



a range of modular Dosing Units used for monitoring and controlling pH & TSS levels and/or providing proportional chemical dosing.

Kelly Tanks were also able to attain Constructionline Gold Membership, SSIP and Acclaim Accreditation ensuring they meet the PAS91 and Common Assessment Standard.

This year, Kelly Tanks are expanding their fleet and product range as well as improving their facilities and attracting more talent to team KT. Kelly Tanks are also looking forward to giving back to their local community and keyworkers again this year with continued volunteering and donations.



Innovation and sustainability also remain the focus, kicked off with the introduction of a mobile renewable energy system that unlike existing options, does not require a backup generator. The hybrid solar & wind unit is ideal for generating power in remote areas in all seasons and the systems Wind Solar Hybrid MPPT Controller with dump load provides protection functions such as overcharge, over discharge and



overload to guarantee peace of mind that power is successfully generated and stored ensuring the user is never left without power.

Kelly Tanks innovative product range is complemented by a commitment to excellent customer service. "As a company we pride ourselves in putting the customer first. We are proud of our fast, nimble approach in providing our customer with exactly what they need. As well as our equipment, we can supply familiarisation training, testing services and full onsite water management teams. We also design and build bespoke systems to ensure our customer always receive the best equipment for their application".

2022 will also see Kelly Tanks exhibit at the UK Concrete Show in May and Hillhead in June where they are expected to showcase their latest developments in Concrete Washout & Water Treatment.

KEY BENEFITS YOU CAN EXPECT FROM KELLY TANKS SYSTEMS:

- Designed to meet the rigours of the construction industry
- Fast and Simple to Set up
- Small Footprint equipment available
- Units can be linked to handle range of flows, pumps sizes & particle characteristics
- Easy to Maintain and Monitor equipment
- Reduce off-site disposal costs
- Reduce risk of pollution
- Easy to use equipment

If you'd like to find out more information on Kelly Tanks' full range of products, head to the website or get in touch using the contact details below.

T 01889 508944
info@kellytanks.co.uk
www.kellytanks.co.uk



KELLY TANKS

Dealing with waste water onsite?

We provide **CONCRETE WASHOUT AND WATER TREATMENT SOLUTIONS** so that you can easily re-use or safely discharge your onsite wastewater

01889 508944



SETTLE & RETAIN SOLIDS
FLOCCULATION & LAMELLA
NEUTRALISE & CONTROL PH
REMOTELY MONITOR PH & TSS

CONCRETE WASHOUT SYSTEMS AVAILABLE FROM £55 P/WK



ENSURE COMPLIANCE
Remote **pH & TSS** monitoring and data logging units available for hire

www.kellytanks.co.uk
info@kellytanks.co.uk

Planting a brighter, greener future



Encouraging biodiversity and sustainability, Tomorrow's Forests (TF) are tree planting experts in the UK, specialising in high volume commercial reforestation and providing quality support services for industry, resource management, government, private landowners and public institutions.

"We are on a mission to fight climate change by creating UK forests. We offer a full range of tree planting services from restock, beat-up, stake and tube, hedging and windbreaks," noted Toby Brusey, Business Operations Manager.

TF was established in 2014 by founders and managing directors, Nick Hollingworth and Elisabeth Boivin, and provides the latest reforestation industry leading practices to the UK market. The company offers clients a full range of products from tree planting, vegetation management, eco logging, woodland surveys and land reclamation. In addition to TF, Creating Tomorrow's Forests (CTF) was established in September 2020, by Nick and Elisabeth, which is designed to help businesses and private members improve their sustainability profiles and reach net-zero goals, all while creating biodiverse forests right here in the UK.

In terms of the last 12 months for the company, we caught up with Toby who explained that, "It has

been a good year at Tomorrow's Forests and a very busy one. We launched CTF back in September 2020 and both CTF and TF have grown their workforce, contracts and clients.

CTF is now a UK finalist in the BUPA eco-Disruptive challenge which is a global initiative challenge which seeks to find industry leading start-ups in the sustainability sector, while our Tomorrow's Forests operations have continued to grow, with the 2021/22 planting season forecast to be our biggest to date.

While the global pandemic has continued to surge, we think there has been an increase in demand over the last 18 months for tree planting projects. With COP26 also in the headlines in November, there has been a push for sustainable materials to be used in construction, such as timber. Our industry is in a good place at the moment, and we are set to grow and evolve with it."

Indeed, the last year has been a productive and busy year for both companies. There have been a few noteworthy accolades for CTF over the past year, including being selected as the winner of the Bupa eco-Disruptive 'Biodiversity' challenge, which looked at ways to increase, restore, or protect biodiversity around the world. In the programme,

CTF worked with Bupa to create diverse new forests and habitats, encouraging people to engage with their local biodiversity and educating them to understand how to preserve it.

CTF has also recently been recognised by The Times as a winner of their Earth Ad Fund Award.

CTF has seen a noticeable rise in business partners joining its venture over the past few months, which shows a real interest in habitat creation, biodiversity and tree planting initiatives from UK businesses and private members.

Speaking about why this is, Toby said, "A lot of competitors plant overseas in Africa and India, using third-party partners, whereas we own all of the land that we plant on and we plant using our own team of in-house planters. There are no third party contractors at any stage of the process. This means we have complete control and freedom to manage



the land and the trees in the best possible way. It also means we can provide complete oversight to our customers at every stage of the process and provide something that is real and tangible that they can come and visit for themselves."

CTF's continued focus is on increasing awareness, educating their partners and encouraging others to take up this opportunity. There are a number of ways in which both businesses and private members can get involved. For businesses, they can plant trees on behalf of their employees or their customers, they can plant trees to offset manufacturing costs, or they can plant trees as part of a wider sustainability plan.

For private members, some of the ways in which they can get involved include gifting a tree to a friend or loved one, signing up to plant trees monthly, or planting trees on an ad-hoc/one-off basis.

Toby added, "There are many ways to get involved and these are just some examples. We love to work with businesses and our private members on any bespoke ideas they might have about how we can work together to get more trees planted in the UK."

As the company looks ahead, TF maintains big aspirations for their future. In the short-term, TF is in the early stages of an extremely busy planting season. As well as this, the company is currently making additional land purchases to run its new program on biodiversity units and to further develop their existing sustainability tree planting projects for businesses and individuals in the UK. As for the long-term, the company maintains ambitious plans with a look to start overseas habitat creation operations and furthering its global reach, while also ensuring that both companies grow in a sustainable growth model.

In closing, Toby remarked on the company's acceptance of our award, "we are very proud to receive this award. It's a massive team effort, from our amazing planters, foremen and women, supervisors and office staff. They are all hard working and dedicated and we are very grateful to have them on board on our crazy journey. This award is a nice way to highlight everything they do and how it is being perceived out there."

Contact
T 01258 818003
www.tomorrowsforests.co.uk
www.creatingtomorrowsforests.co.uk



Quit foaling around, eliminate Sweet-Itch now!

Does your horse suffer with flies in their eyes? Or midges around their face and body? Having previously owned three horses coupled together with many years of hands-on managerial experience of The National Sweet-Itch Centre, Itchy Horse Company Ltd uses its expert no obligation approach to tackle the problem. Using all its necessary skills and equipment, Itchy Horse Company Ltd fully understand the distress caused by this condition to the carer and the horse.

Itchy Horse Company Ltd is the UK sole supplier of the renowned Swedish Boett Blanket and Hood which has been at the forefront of the treatment of Sweet Itch for 30 years.

"The Boett Blanket has survived the test of time, still the best product for Sweet-Itch, recommended by Vets and some insurance companies will cover the cost of too. It is such a good product that many have attempted to copy the design, but it's the breathable fabric that makes the difference and the excellent customer service that comes with it." Alison, Manager.

With an abundance of information available on how best to care for your horse it can be difficult to know who to trust. This can lead to confusion and frustration, ultimately leaving the problem unsolved. Itchy Horse Company Ltd offer products that are tried and tested with great success. It believes in the products offered and will always go the extra mile for the customers to ensure 100% satisfaction.

In aid to eliminate Sweet-Itch, Itchy Horse Company Ltd offers BioPlus capsules, these have resulted in a breakthrough in the treatment of Sweet-Itch. "We trialled them for 10 years. It started as a vaccine and was later developed into capsule form. We fed one capsule a week throughout the year and 90% of horses showed an improvement in their symptoms. Out of

those horses 70% showed an above average improvement greater than 50%." Alison stated.

BioPlus capsules is not only an effective product, but it is simple and safe, designed to modulate the immune system. Itchy Horse Company Ltd has seen great results from this product not only to help treat Sweet-Itch but also treat other immune conditions such as COPD and Sarcoids.

Other fantastic products the company supply is a non-allergenic shampoo alongside numerous ointments including Mothers Bee products and Itchy Horse Barrier ointment. These products help soothe and protect, repairing damaged skin by providing a protective barrier allowing the skin to breathe and regenerate. Made from Beeswax, the Mother Bee sweet relief ointment is a blend of selected oils to help treat all skin conditions.

Everything Itchy Horse Company Ltd offers is geared towards the welfare of the horse as that is of vital importance. It has absorbed all increases in costs and has maintained set prices for the past seven years. Alison explained, "To us the welfare of the horse is more important than profit."

Contact
T 01352 840333
M 07825 152490
info@itchyhorse.co.uk
www.itchyhorse.co.uk



The Boett Blanket & Hood

Now recognised by some insurance companies as an treatment also used as an effective fly rug by many owners.

Recommended by vets.

A solution that dramatically improves the quality of life for every horse that suffers as a result of Sweet Itch The Boett® Veterinary Blanket

Widely recommended by Veterinarians who have witnessed first-hand the rapid and impressive results in affected equines. The boett blanket provides a totally effective barrier against insect attack and prevents the typical symptoms of this allergy.

- Unique, breathable, water repellent fabric.
- A design that is so effective other rug manufacturers are copying it!
- Proven for over 15 years.
- Does not cause overheating, used in Australia, Saudi Arabia and other hot countries comfortably.
- Does not damage hair.

Tel: 01352 840333/ 01352 771718
Email: info@itchyhorse.co.uk
www.itchyhorse.co.uk

Boett

Boett