

INDUSTRIAL SOLUTIONS UK

ISSUE: 653 | FEBRUARY/MARCH 2022

www.solutionspublishing.co.uk

MEDICO LEGAL: THE 10 PRINCIPLES FOR PRACTICE

Mr Rodney Peyton, OBE MD covers his 10 top strategies to help health professional's deal with the Court process

See more on page 3

Supertouch

turn to page 4

Biopharma Group

turn to page 10

TEC RFID

turn to page 11

UNISIG

turn to page 14

PTS UK

turn to page 15

Screwshop

turn to page 15

Gold & Wassall

turn to page 16



Lisa Flowers
floral design

*A bespoke florist
in Solihull*

Lisa Flowers Floral Design is a bespoke florist in Solihull and Knowle, offering a personalised and professional service for all your floristry requirements.



Find out more at
www.lisaflowersfloraldesign.co.uk

“

Dedicated to the supply of freeze drying & bioprocessing capital equipment to the pharmaceutical, biotech & process industries across the UK & Ireland

”

See more from Biopharma Group and Crowthorne on page 10



Contents

03 Peyton Medico Legal
Medical & Legal News

04 Supertouch
PPE & Workwear News

05 Sound Damped Steel
Industry News

08 Curtiss Wright
Surface Finishing & Coatings News

10 Biopharma Group
Freeze Drying Equipment News

Including BUILDING UPDATE

Featuring a wide variety of companies from across the UK and Europe, from Builders to Landscaping.

Editors Comments

Hello & Welcome to Issue 653 of Industrial Solutions UK!

The team at Industrial Solutions UK has been working extremely hard to bring you an issue that is full of innovative and exhilarating companies and we are very excited to share their success and achievements with you.

We have searched the length and breadth of the UK to bring you some of the most ground-breaking innovations and this month, we are overjoyed to be highlighting the activities of Peyton Medico Legal and UNISIG.

Firstly, we would like to focus on the accomplishments Peyton Medico Legal who this month features on our front cover!

Secondly, we are featuring UNISIG with the 'Deep Hole Drilling' profile following their impressive performance over the years. For more information, turn to page 14.

I hope you enjoy reading this issue of Industrial Solutions as much as we have enjoyed bringing it to you. Happy reading and we hope to see you for the next edition!

Ian Hayward, Editor
INDUSTRIAL SOLUTIONS UK

For all advertising & sales enquiries, please contact Ian Hayward
0121 241 8788



Magnetic Solutions News

Magnetising the Market

Within this issue of Industrial Solutions, we have selected Newland Magnetics as the recipient of our Commitment to Excellence Award. Newland Magnetics Europe is a subsidiary of Ningbo Newland Magnetics Industry Corporation Ltd, a Chinese company that has been manufacturing sintered NdFeB magnets and magnetic assemblies for over 12 years. In 2017, Forbes Crisell the companies Directeur général set up the European subsidiary in France.

With over 70% of its sales within Europe, the company decided to set up Newland Magnetics Europe to provide additional local support, allowing customers to communicate in their own language and removing the 6+ hours' time difference with China. In addition to supporting the existing business Newland are also generating their own direct new sales within Europe, the USA and India.

Focusing on all market sectors Newland Magnetics Europe can provide material data, technical, design assistance and sampling. They can also provide a range of stocking options including consignment stocking at their location in France, within a customer's own facility, or shipping directly from China. As well as supplying sintered, bonded and powdered NdFeB, Newland also supply AlNiCo, SmCo and hard ferrite magnet materials, and magnetic assemblies manufactured to the customer's specific requirements. Our parent company and key supply partners are constantly finding new innovative products, the latest addition to the range are microwave Ferrites or Ferrimagnets which allow smaller lowcost passive microwave components to be produced.

Newland Magnetics Europe is a subsidiary of Ningbo Newland Magnetics, which allows them to provide magnetic products at the same cost base as material purchased directly from China, giving them a competitive edge price wise over other European Magnet suppliers. Another advantage is that Newland can provide the highest grades of NdFeB material and assemblies. This is achieved by continuing to invest in new test equipment, which enables Newland China to control all the key parameters from compounding their own magnetic powders to pressing, sintering, grinding and plating.

Our European base makes it easier to communicate with customers, providing technical support in their own time zone. Literature in French, German and Italian is available in order to help customers understand the products and services provided. With storage facilities in France

Newland can also offer a three-day delivery to any part of Europe rather than extended delivery times when ordering directly from China. As business continues to grow Newland Magnetics Europe have moved to larger premises providing additional office space and over 500m² of warehousing, and in the next 12 months they will be joined by an engineer from China to offer additional technical and design support. Another



addition to the team was Amanda Dickinson as Inside Sales Manager, who is using her background in the research industry to help customers with their complex magnetic applications. In fact, this year she has already developed new business within the laboratory and medical industry in the USA.

NEWLAND MAGNETICS EUROPE IS COMMITTED TO PROVIDING ONLY THE BEST QUALITY AND SERVICE TO THEIR CUSTOMERS IN EUROPE AND BEYOND. FOR MORE INFORMATION OR TO MAKE AN ENQUIRY, PLEASE CONTACT OUR FRIENDLY TEAM TODAY.

Contact
T +33 (0)545 839959
info@newlandmagnetics.eu
www.newlandmagnetics.eu



Newland Magnetics Europe SAS
Your total magnetics solution provider



Supplying a complete range of magnetic solutions from our European Offices

Newland Magnetics Europe with its offices and warehouse located in France, are part of the Ningbo Newland Magnetics group who have been manufacturing Sintered NdFeB magnets and magnetic assemblies for over 12 years. Now with an annual turnover of more than €30M, ISO9001:2015 & IATF 16949:2016 accreditation and production capacity of 1,000tons per year Newland Magnetics is rapidly becoming one of the largest producers of high-quality NdFeB magnets in China.

Newland Magnetics Europe can provide material data, technical, design assistance and sampling to assist with your application.

Please visit www.newlandmagnetics.eu

Tel: +33 (0)5 45 83 99 59 | Email: info@newlandmagnetics.eu

Industrial Processing News

RMIG is the world's largest manufacturer and supplier of perforated metal and its related products.

We know our customers' requirements for price and quality and meet their demands with uncompromising service.

Not only do we offer standard and bespoke perforated metal sheets, we are able to offer you a range of secondary operations as detailed below.

Complete solutions
With a continued investment in the latest equipment and a network of professional partners we are able to produce prime quality products and solutions – from a simple perforated sheet to the fully formed and coated custom made part.

Cutting
We can cut and shape perforated sheet to meet the needs of your final application.

Levelling
For some applications a high degree of flatness is required, we have processes in place to ensure our perforated coils and sheets meet with your most demanding requirements.

Rolling and forming
We can roll, bend and form perforated sheets to match your design.

Aesthetic finishes and protective coating
We can offer powder coating and hot dip galvanizing solutions to meet your specifications.

For more information please contact us tel: 01925 839610 | email: info.uk@rmig.com | www.rmig.com

‘The Health Professional in Court’: 10 principles for practice

For this month's feature article, we interviewed someone who is acknowledged as one of the world's top surgical coaches and an international authority in medico legal issues.

Mr Rodney Peyton, OBE MD is a Trauma Surgeon who has the unique distinction of holding Fellowships in all four Royal Colleges of Surgeons in the UK and Ireland as well as being a Fellow of the Royal College of Physicians in London. He holds a master's degree in medical education from Cardiff University and graduated in law from the College of Law in London.

In his career spanning 40 years, he has been engaged in over 70,000 personal injury cases as well as being asked to advise on more than 3,000 cases involving medical malpractice.

He therefore has a wealth of experience in preparing cases for and giving expert testimony in Court and has been involved in the training of doctors and lawyers in dealing with medico legal cases, individually on a face-to-face basis, and also as a trainer and keynote speaker.

In this article, he will cover his 10 top strategies to help health professional's deal with the Court process.

He is also a well-known author and international keynote speaker. For his availability to speak at your corporate events, contact him at: rpeyton@rpeyton.com.

Increasingly, senior professionals from all branches of the healthcare industry are finding themselves involved in the Court system, either on an involuntary basis, as a witness to fact or defendant, or on a voluntary basis as an expert witness.

Gone is the paternalism of 'the professional knows best' and there has been more and more scrutiny by the public of professional actions and attitudes.

Leaving aside the criminal law, which is an entirely different situation, civil legal cases are predicated on the fact that within every profession, or branch of profession, there exists a range of opinions as to what constitutes good practice. Defendants and expert witnesses are expected to provide opinions, witnesses to fact are not.

It is important to understand that, while judges are highly trained and experienced in the interpretation of the law, they and the barristers or trial lawyers who argue cases are nevertheless lay people when it comes to the healthcare professions. They are not medical experts and therefore require help in understanding the medical evidence before them. For the health professional, whether as defendant or expert witness, the duty is to assist the Court in their decision-making whilst at the same time maintaining and promoting their own professional integrity and reputation.

Most healthcare professionals rarely appear in Court. From personal experience as a teacher and trainer to those who do become involved, there are recurrent themes, which arise and so the following 10 principles have been developed to help guide professionals through the Court process.

Record keeping

Keep detailed contemporaneous records.

Any major findings or decisions, whether it be from working with a patient, a client or undertaking a project, should be on record, as one never knows when such



events may become the object of scrutiny. There is an old saying, 'if it is not written down, it did not happen' and oral evidence is likely to be regarded as weak and suspect unless there is written evidence to back it up. A little extra time spent in ensuring accurate, contemporaneous recording may save considerable time, effort and indeed stress at a later stage when trying to convince a Court that decision making was sound. Remember, all written communications are discoverable and may be used in Court proceedings. Therefore, it is important not to make any gratuitous comments within the written record.

When acting as an expert witness, always look for original, contemporaneous documentation to back up later oral recall of events. Stick to the facts as presented and derive opinions from them.

Producing a report

Reports should be timely, factually based and the opinions well-reasoned, taking full account of appropriate legal tests.

When producing a report, clarify whether you are acting as a professional or as an expert and keep the distinction between the two. As a defendant, you will be required to explain your position. It is important you outline any reasonable range of opinion, which informed your decision-making and actions, stating why your own should be preferred, 'defence being the best form of attack.'

Being a witness to fact is a requirement rather than a choice. If you have been directly involved, provide evidence under clinical findings, observations and actions. Limit evidence to that which has been recorded and remember not to venture opinions or speculate on events.

An expert witness's function is to help the Court by virtue of their knowledge, training and experience within their professional field of expertise. Reports must not intentionally mislead and any omission of relevant information reveals prejudice, whether acting as a professional or an expert witness. All opinions proffered must be logical, based on recognised clinical evidence and guidelines to include the appropriate standard of care, being clear what was relevant at the time of the incident. Always anticipate counter arguments, addressing them within the body of the report wherever possible and be alert to the potential for your own professional bias. Expert witness reports must be and must be seen to be independent.

Do not revise your report unless you have been subsequently provided with new facts, which need to be taken into account, at which time you must explain why these have made a material difference to the previous conclusions.

Attendance at Court

Always present as professional and credible.

First impressions count. This includes dressing appropriately for the Court and ensuring you have all your papers with you, particularly when actually giving evidence.

Make sure you take time to prepare thoroughly, highlighting any relevant areas in your report and those of others for ease of reference. Make sure you have taken time to think out potential questions or possible arguments which may be raised and

know your reasoning behind everything you are going to present.

Court procedure

Be aware of the Court procedure in whichever jurisdiction you attend, while you may be senior in your branch of the health care profession, unless you are highly experienced in Court practice, you are relatively junior in relation to the Court process. This is particularly pertinent for witnesses to fact who may be unfamiliar with legal proceedings.

An expert is engaged because of expertise in a particular subject and must, not only keep up to date in their own field, but also be cognisant of the requirements of the Court process. They are there to represent their point of view and assist the legal process.

It is important they do not come across as overbearing, as they are, in fact, servant/leaders, tasked with educating the Court and therefore must understand what is required from the Court's point of view.

Constantly strive to improve your presentation skills, for example by giving talks on medico legal issues, so that you are used to standing up and delivering legal points in relation to medical cases.

Duty to the Court

Your professional duty as an expert or a witness to fact is always to the Court, no matter who engages you or why you have been called to attend.

This responsibility must be taken seriously. The role is to help litigants, their lawyers and the Court better understand the nature of medical evidence in individual cases so they can come to reasonable decisions. In this context, it is important they are helped to understand what acceptable practice was at the relevant time.

Health professionals do not have immunity when giving evidence. Not having this protection has unfortunately meant that some have been at the receiving end of severe public criticism, up to and including the award of costs against them and even a custodial sentence when the Judge considered that, by acts of omission or commission, the Court had been misled. This can have severe implications on personal, professional and financial standing.

Range of opinion

Always acknowledge there may be a range of reasonably held opinions.

In this context also consider possibility vs probability 'more likely than not.' If a matter comes to Court, there is going to be an opposing view from another professional expert who does not fully, if at all, agree with your opinion. Therefore, it is important to cover counter arguments in your considered opinion, which adds to the credibility of the report. The report must contain logical reasoning for accepting or rejecting other opinions and include any references, which are to be relied upon.

Guard against emotional statements and hyperbole and never denigrate others. Very rarely is 'in my experience' relevant in Court unless it is thoroughly backed up by objective evidence.

Credibility

Experts must stay within their field of expertise when giving opinions. They should have a bespoke CV for each case, indicating why they are a reliable expert for the matters at hand. It is in the nature of the Court process that opposing lawyers will try to diminish your credibility and it is wise to have answers for the three questions, which almost every barrister/trial lawyer will utilise at the beginning of an examination.

These are:

Do you know your duty to the Court, including your knowledge of relevant legal tests?
Are you an expert on all points on which you are giving an opinion?
Is there a range of opinion, which reasonable and respectable doctors may hold?



Ensure you are clear on your answers before getting into the witness box. This is all about credibility and as far as possible stay away from arguing about legal, technical and ethical issues.

Giving evidence

There are three types of oral examination for all types of witnesses, the evidence-in-chief, cross-examination and re-examination.

For Evidence-in-chief, your barrister or trial lawyer will lead you through your report and highlight any specific points relevant to the case. Cross-examination by opposing counsel looks at those points in detail, helping the Court assess credibility and ascertain whether there are in fact other opinions, which are equally valid. Do not get into an argument with the barrister or trial lawyer who is questioning you. Expect to be put under pressure during cross-examination but resist being provoked. Keep calm and answer to the bench. If you feel that your answers are being cut short unreasonably, ask the Judge if you may expand and follow their direction, always coming across as reasonable and professional. After answering the Judge or presiding officer then look back to the barrister or trial lawyer for the next question.

If you are given new information, which you did not have before then say so and, unless the answer is obvious, do not give a knee jerk reaction but ask for time to think it out. If it is not in your field say so and be careful of your own personal bias, again clearly separating fact and opinion. All your reasoning must stand up to logical scrutiny.

Re-examination is led by the instructing party to clarify issues, which have been raised during cross-examination. This phase is usually fairly short and rarely are any new matters raised.

Keep it simple

Keep all your evidence as simple as possible.

Remember, although the Court consists of lay people, they have considerable expertise and experience in handling different kinds of evidence. Take time to explain the issues at hand in jargon free, transparent terms, the more so if it happens to be a jury trial. Speak slowly, follow the Judge and his/her speed of writing or typing as they will be keeping a record of the proceedings.

Reflection

Reflect on the outcome.

After the verdict, as an expert do not take anything personally and learn what you need to learn. Similarly, as a witness to fact.

Think over what transpired and take time to reflect on what went well and what could you have possibly done better, or at least differently. As Stuart Emery states, 'The path to mastery in any subject is to correct, not protect.'

Be open and honest with yourself and always seek to improve your practice as well as in the reporting and delivery of your evidence.

Once you have done so, move on. Civil Courts are not saying you are right or wrong in general terms, they are saying they prefer one set of evidence over another and it is only in the balance of probabilities.

Conclusion

Whether as defendant, witness to fact or expert witness, the process in civil litigation is the same.

By gaining an understanding and some familiarity with the process, practitioners can develop both confidence and competence in their role of presenting evidence. As an expert, the more often you appear in Court the more competence you gain and therefore the more confident you become.

Healthcare professionals are required ethically and by their professional bodies to continually update their practice, knowing why they do what they do in the way they do it, ensuring practice is evidence-based. However expert you are, you must not become complacent in either your practice or in Court.

Finally, all witnesses must remain neutral, explain the range of opinions, and be aware of their own potential for selective bias in any evidence presented. Courts are reliant on credible, impartial and articulate healthcare professionals and presenting as such impacts greatly on personal, professional and financial standing.

Contact

T +44 (0)28 8772 4177
F +44 (0)28 8772 7134
info@rpeyton.com
www.rpeyton.com



Corporate stays available



Situated in the picturesque village of Orton, The George is a traditional Country Inn and Pub nestled on the border of the Howgills and the Eden Valley.

A family run business, visitors at The George can expect nothing less than a warm, friendly and comforting welcome.

Producing an envious selection of traditional real ales and home cooked food using locally sourced produce, The George's menu is an unmissable experience. The George prides itself on using local produce, sourced from within a 20-mile radius of the George Hotel. Offering an abundance of traditional pub grub dishes, alongside its selection of drinks, The George is the perfect spot to meet up with friends and family.



Looking to stay? The George maintains eight rooms on its premises, providing Bed and Breakfast at extremely reasonable prices. The rooms include single, double/twin and a family room. All rooms contain a TV and have tea and coffee making facilities. Specifically designed to provide a 'home away from home' feel, all of The George's rooms feature comfy beds and a warm, homely feel making them perfect for a snooze after a long day of exploring the nearby attractions.

Being perfectly position, Orton is just three minutes from the M6 Motorway (Junction 38) and is four scenic miles from the M6 Motorway (junction 39).

There is plenty to see in terms of its surroundings and The George is also on various coast to coast and cycle routes including Alfred Wainwright's 'Coast to Coast' walk and Walney to Wear & Whitby Cycle Route (W2W).

Whether It's for a pint in the sun, enjoyed in The George's outside terraced beer garden or a cold winter's night with delicious food cosied up in front of its roaring log fire, The George offers a relaxed atmosphere with a friendly personal service all year long!

T 01539 624071
www.thegeorgehotelorton.co.uk



The Pawā® PG310 & Pawā® PG535



Under the strain of working life, Pawā® Gloves are here to take on more day after day. In environments where safety is critical, these gloves are made to withstand everything that comes their way. The range is feature-heavy, meaning that there's a glove suitable for the task at hand.

Over recent years, updates to production line machinery have meant that touchscreen devices are now commonplace in work environments. As a result, workers now require gloves that

can offer protection and touchscreen compatibility – enabling them to operate the necessary equipment on-site.

Pawā® offers durable gloves that are capable of being used with multi-touch displays, namely the Pawā® PG310 & Pawā® PG535. In addition to being touchscreen compatible, the PG310 offers certified EN ISO cut-level C protection and a sandy nitrile palm coating that offers excellent grip, making it ideal for manufacturing tasks.

The Pawā® PG535 provides users with excellent EN ISO cut-level D protection. This tough glove features a reinforced thumb crotch for additional durability and is ideal for modern production lines thanks to its touchscreen compatible PU coating.

Why not feel the Pawā® for yourself? Visit our website and request a sample today!
www.pawaworkwear.com/request-a-sample

Ultimate comfort. Ultimate durability.

EN ISO Cut Level

C

360° Breathability

Grippy Sandy Nitrile Coating

Touchscreen Capable

Reinforced Thumb Crotch

Pawā® PG310

Durability & Breathability

Pawā® PG111

Durability & Cut-Resistant

Pawā® PG330

Durability & Anti-Cut D

Pawā® PG535

Durability & Anti-Cut F

Pawā® PG550

The Pawā® PG310 features

PawāLIFE™

Designed for durability against heavy duty activity and repetitive forces to prolong glove life - optimising lifetime cost.

Durability should never inconvenience the wearer. Featuring a highly breathable, cut-resistant liner that remains comfortable over prolonged use, the Pawā® PG310 is ideal for sharp-handling tasks. In addition to this, the PG310 is touch screen compatible - enabling safe use of devices on-site.

0121 516 9934

pawaworkwear.com/request-a-sample

#feelthepawa

Exclusive to:

SUPERTOUCH®

A cut above the rest

Situated in South Gloucestershire, specifically in Yate, Bristol, CAMB Machine Knives dedicates its efforts to the professional supply of contemporary, razor-sharp tools that can be efficiently and effectively employed in many operational environments. The business was set up in 1989 by husband and wife team Jerry and Christine Milner upon realising that there was a substantial gap in the market for these particular products.

Having advanced significantly over the years, CAMB Machine Knives has become an internationally acknowledged brand that has been widely appreciated for its extensive array of high performance products. Its impressive portfolio comprises, to name a few examples, circular knives, top dished knives, bottom knives, toothed knives, straight knives, anvils, tray form blades, razor blades, shear blades, guillotine blades, granulator

blades, carpet knives, tobacco knives and confectionery knives.

Although predominantly utilised for poultry processes, the stainless steel knives are suitable for use in a variety of applications – the utensils have proven of great value to those working within the food, packaging, processing and industrial segments. Although similar in many respects to the prototypes currently found in the market, CAMB Machine Knives are deemed a more economical option because of their competitive pricing and high calibre product.

The re-sharpening service is available to anyone who has purchased a knife from the company. Should they require this, this amenity can be arranged on a weekly basis for consistency and convenience. This is also a great facility

for clients who are looking to fully regrind their knives, as this enables them to keep their equipment polished, practical and purposeful with greater efficiency and less downtime.

For complete customer satisfaction, CAMB Machine Knives operates with a next day delivery service and strives to source the best and most appropriate solution for the application in question.

T +44 (0)1454 322178
sales@camb-knives.co.uk
www.camb-knives.co.uk



First class food machinery provision

Providing labelling services to the food and beverage sector, PFM predominately specialise in providing business leaders with exclusive vacuum packaging, slicing and weighing equipment both new and reconditioned. Additionally, they also distribute a widespread range of sundries including vacuum pouches, bags, sausage casings, rusk, sausage seasonings, professional knives and more.



The labelling company are also able to provide clients with an extensive after sales support service, catering to those who seek help with their items, extra equipment, adequate know how on how to maximise their product's potential and much more.

Their internal and external vacuum packages are particularly sought after, having been developed using top quality PA/PE material.

Similarly, their sundry and clothing is made using the finest materials, and encompasses commonly used cooking attire, such as aprons, gloves, hair nets, coats and trilby hats. Food equipment, which includes knives, steels and racks, are also popular purchases among clients. PFM also supply clients with first-rate safety efficient chain mail gloves, which have been specially fabricated for both hygiene and protection.

Their latest merchandise, the Epelsa Range of scales and printers, has been so efficaciously constructed that they have attracted multiple clients such as the Co-op, who have had this product placed in a number of stores across the UK. Moving forward, the company are looking to enlarge their current market footprint as a leading provider for the meat industry, extending their consistent and efficient services to new sectors and client bases.

T +44 (0)8449 802428
www.pfmplus.co.uk

Award-winning noise and vibration damping technology

Sound Damped Steel (SDS) is a multi-award-winning noise control company which was established by Les Thompson in 2003 with the main aim being to develop, manufacture and supply materials for industrial noise and vibration control applications.



"The company make steel which absorbs vibration making it sound like rubber. It is supplied to OEM manufacturers to make chutes, hoppers and machine guards quieter, we also supply kits to retro-fit on existing noisy machinery which is a much more cost effective way of dealing with noise issues for a lot of businesses." Added Les Thompson, Managing Director.

SDS draws upon over 30 years of experience in developing new and practical applications across an extensive range of projects to help both end users and leading noise and vibration control consultants in solving their problems.

A speciality is pipelines. Gas, oil and other pipelines with their associated equipment such as valves are renowned for generating high levels of noise that require a solution. The current noise control measure is acoustic cladding. However, this contains a multitude of drawbacks such as the need to be removed frequently for inspection and additional associated problems such as condensation and corrosion. To tackle this SDS in conjunction with the INVC developed the Quiet Pipe Technology system which negates all the problems associated with current technology. Quiet Pipe works by interlocking acoustic close shields that effectively convert the pipe itself into a silencer element to diminish noise.

The COVID-19 pandemic has caused disruption for many industries and affected every company differently.

T +44 (0)191 259 0700
www.sounddampedsteel.com

Only LeeSan truly specialise in toilets
Toilets, Tanks, Hoses, Clips, Gauges, Fittings, Vent Filters and everything you need plus Advice & Guidance
A Sanitation that brings peace of mind ...
Supported by our Worldwide Spares Delivery Service

sales@leesan.com
T: 01295 770000

LeeSan
Plumbing • Heating • Electrical

PARKERS FOOD MACHINERY PLUS
Packaging & Ingredients

Suppliers of food processing machinery, weighing scales, vacuum pouches, thermal labels and food packaging

Introducing the Ishida WM Nano Automatic Wrapper

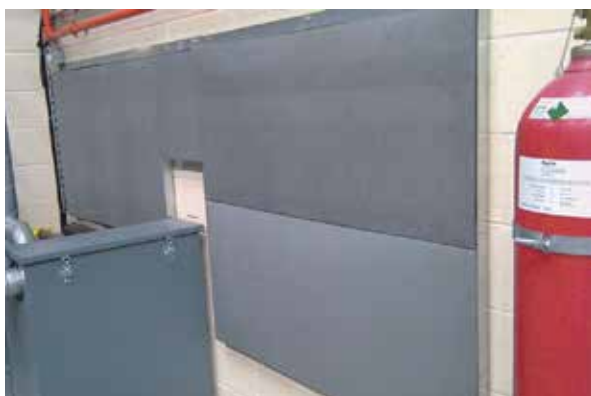
- The most compact, affordable table top semi-automatic wrapper in the world
- Weighs, wraps and labels up to 15 packs per minute
- Scale, software and set up included
- Innovative packaging technology award 2012
- Use Foil, Polystyrene, PSP and PP Trays

Shop On-Line: www.pfmplus.co.uk

Call: 0844 9802 428
Email: sales@pfmplus.co.uk

Noise Controlling Metals – Manufacturing Quiet

"SDS – Performs like metal, sounds like rubber..."



OEM design retro-fit noise control kits materials components

Conventional metals are efficient loudspeakers, radiating noise, SDS manufactures high damped quiet metals that don't radiate noise. Simply swap your noisy metal for quiet metal and reap the rewards

Galvanised, stainless, aluminium, combinations...

Effective, rugged, hygienic and low cost noise + vibration control made simple



Telephone: **+44 (0)191 2590700**
Email: **sales@sounddampedsteel.com**
Les Thompson: **+44 (0)7513 908060**

www.sounddampedsteel.com

Unique Woodland for any corporate event in an AONB

Nestled in the idyllic East Devonian countryside is Boveys Down Farm, a quiet and rural retreat offering Woodland Weddings, glamping (March – September) and year-round camping.

Boasting stunning views of the Farway Valley in an AONB, Boveys Down Farm is situated a few miles from the Jurassic coast, and no more than 15 minutes away from beaches, pubs, shops and restaurants, making it secluded yet conveniently close to everything you could need for a camping break.

Five years ago, the farm became a fully licensed venue

for weddings and civil ceremonies. We had the pleasure of speaking to Pam about what makes Boveys Down Farm the perfect venue for your special day.

Indeed, the Woodland Pavilion used for the ceremonies is situated in a small area of woodland, close by to the indoor barn and commercial kitchen. Beautifully presented with careful attention to detail, the pavilion blends perfectly into its surroundings and boasts plenty of room for the ceremony.

What's more, there is the option of booking part of or the

entire site for the exclusive use of your wedding party, and Boveys even offers a bridal suit consisting of two luxury glamping tents joined together.

If you would like to find out more information on booking a camping trip at Boveys Down Farm, or hiring it as a beautifully unique wedding venue, head to their website or get in touch using the contact details below.

T 01404 871436
info@sweetlands.co.uk
www.boveysdownfarm.co.uk



Performance Floors News

The world performs on Harlequin Floors



Harlequin is the world leader in advanced technology floors for the performing arts, entertainment and display.

Established in the UK over 40 years ago, Harlequin remains the industry choice for the world's most prestigious dance and performing arts companies, theatres, venues and schools, production companies and global events.

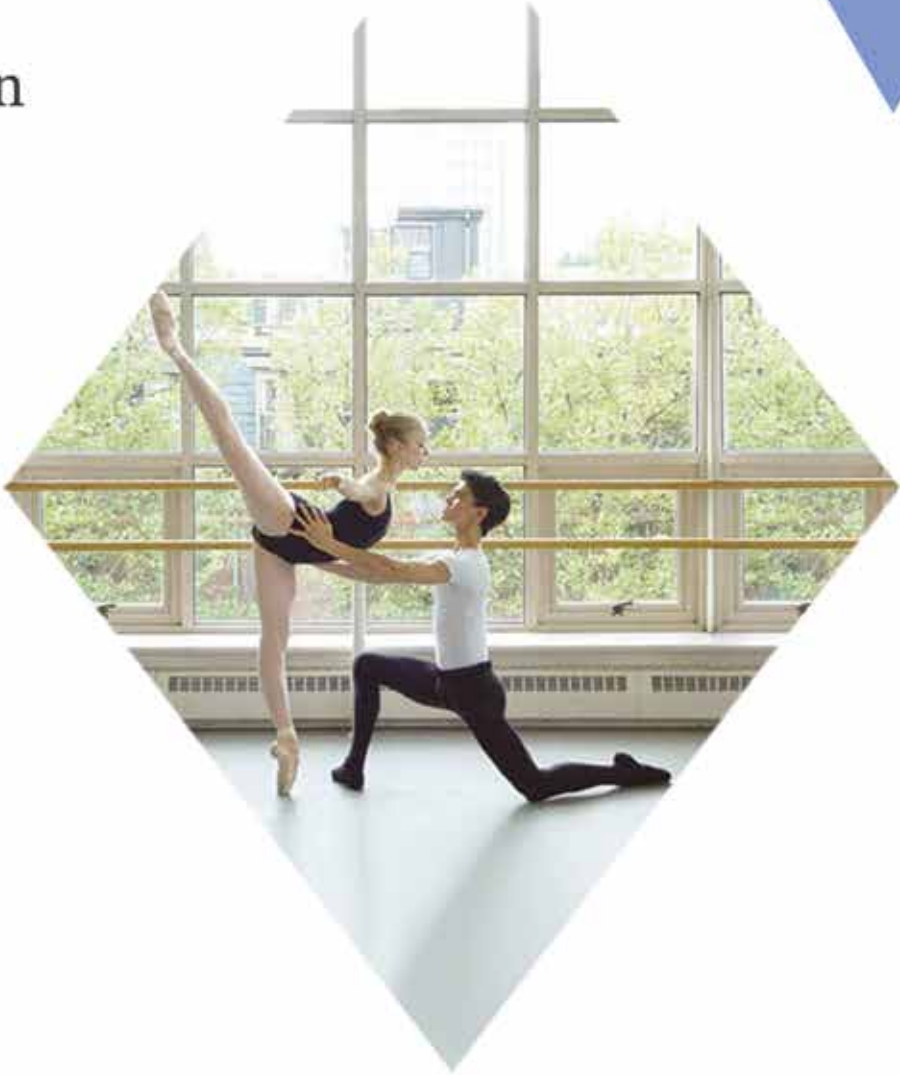
The floor is a dancer's most important work tool; not only is it the canvas for their creativity, it also gives them protection against slips, falls and longer-term stress injuries. It is a common assumption that a well-designed sports floor will suit the needs of dancers, but this is not the case. There may be a temptation to specify floors for aesthetic or budget reasons, or to specify sports floors in the mistaken belief they will be suitable for dance but only a floor developed specifically for dance will do.

Harlequin's experience and reputation are founded on the design, manufacture, supply and installation of a range of high quality portable and permanent sprung and vinyl floors chosen by the world's leading venues – from the Royal Opera House to the Bolshoi Theatre, the Paris Opera Ballet to Sydney Dance Company.

Harlequin is the global leader in its field with offices in Europe, the Americas and Asia Pacific.

T +44 (0)1892 514888
enquiries@harlequinfloors.com
https://uk.harlequinfloors.com/en

Professional flooring for performing arts & dance education



Dance

The world performs on Harlequin floors

Harlequin is the global leader in the manufacture, supply and installation of performing arts floors and studio equipment. Established as the industry choice for architects, building contractors and the world's most prestigious dance and performing arts companies and schools, we continue to carry out site visits in person or remotely and are working with our partners and clients to ensure we can carry out installations following government health and safety guidelines.

For information about specifying the correct floor for dance and performing arts download our RIBA approved CPD online at www.harlequinfloors.com or via the RIBA CPD page.

If you are interested in booking a CPD please contact cpd@harlequinfloors.com

+44 (0) 1892 514 888 architects@harlequinfloors.com

LONDON • LUXEMBOURG • BERLIN • FORT WORTH • MADRID • PARIS • PHILADELPHIA • SYDNEY • HONG KONG • TOKYO • BRNO • LOS ANGELES



HARLEQUIN
www.harlequinfloors.com

Way above the rest

Direct Hoist specialises in GEDA construction hoists and transport platforms, providing high quality, reliable hoist equipment to the construction industries. Boasting a team of hoist experts, the company implements a cost-efficient construction hoist solution for a variety of hoist requirements. With over 30 years of experience, the company showcases its wealth of knowledge through hire and sales of GEDA hoists and accessories.



provides a vast range of GEDA Hoists, from small to large sizes, and it provides a diverse range of hoists with load capacities of 150kg to 3,700kg.

In terms of hoist types, the company maintains a diverse range of hoist products and capabilities. Direct Hoist provides a range of hoists for hire and hoists for sale. Within these ranges they include: scaffold erection hoists, goods hoists, transport platforms, inclined tile hoists and XL hoists.

With the highest quality being of the upmost importance to Direct Hoist, the company adheres to providing

modern, sustainable hoists, which are maintained, installed and dismantled by a team of highly-qualified hoist specialists.

With this in mind, Direct Hoist boasts an array of accreditation, including Constructiononline, and the firm is also a member of Construction Plant-hire Association, Construction Hoist Interest Group and Construction Industry Training Board.

Direct Hoist also ensures that its hoist installation supervisors are trained to an NVQ Level 2 diploma in hoist installation.

Contact
T 01724 781647
www.directhoist.co.uk

Together we can create forests for the future

Established in 2014 by Nick Hollingworth and Liz Boivin, Tomorrow's Forests are specialists in high volume commercial reforestation, supporting industry, resource management, government, private landowners, and public institutions.



After winning its first contract in 2014 to plant 90,000 trees, Tomorrow's Forests has grown significantly and now plants around 2 million trees each year across its numerous contracts.

In September 2020, a sister company was established called Creating Tomorrow's Forests, with the mission to fight climate change by creating forests across the UK, providing new habitats for wildlife, and removing CO₂ from the air. Creating Tomorrow's Forests was launched to make it easy for individuals and businesses to make a positive impact on the planet and replace the UK's lost forests, using Tomorrow's Forests' large-scale forestry experience. Instead of just planting trees for carbon sequestration, Creating Tomorrow's Forests is passionate about developing diverse woodland habitats for the long-term. The project uses the Tomorrow's Forests planting expertise with scientific research to make sure the right species of trees are planted in the right areas, and additional habitat such as ponds and meadows are created alongside to maximise the biodiversity at each site.

If you would like to find out more information on either Tomorrow's Forests or Creating Tomorrow's Forests, head to the websites or get in touch directly using the contact details below.

T 01258 818003 Head Office
M 07824 673239 Nick Hollingworth
(Managing Director)
M 07760 263548 Elisabeth Boivin
(Managing Director)
office@tomorrowsforests.com
www.tomorrowsforests.co.uk
www.creatingtomorrowsforests.co.uk

HOIST HIRE
CONSTRUCTION HOIST SALES
HOIST SERVICE/REPAIR
HOIST PARTS/SPARES
GEDA SERVICE CONTRACTS

APPROVED GEDA AGENT
GEDA

SUPPLIER OF HOISTS TO CONSTRUCTION & INDUSTRY
01724 781647 **0113 819 9997** **0191 260 0543**
DIRECTHOIST.CO.UK

www.tomorrowsforests.co.uk

Tomorrow's Forests can assist with the supply and planting of high quality local trees as well as sundry products required for your woodland creation project.

Our professional and dedicated team will carry out all the necessary surveys of your property, produce detailed designs and, with our skilled planters, implement the new woodland creation to the highest standard to meet your exact requirements.

We will provide help and advice throughout the process and ensure that specific government funding requirements are met. Following the completion of your woodland creation project, we can offer ongoing maintenance, upkeep and professional advice.

There are many advantages to the planting of trees on less productive or unused land areas and farmers and landowners can now obtain a number of government grant and funding options to help with establishing new woodland areas.

Woodland creation projects can be undertaken on suitable land from 3 hectares up to larger areas of over 10 hectares and can provide substantial environmental and financial benefits.

Woodland Creation Benefits Include:

- Timber production
- Increasing land value
- Providing shelter for crops and livestock
- Providing new wildlife habitats
- Stabilising river banks
- Game cover
- Improving the amenity value

ViaCon Storm Water Solutions, Bridges and Culverts

STORAGE TANK HIRE
CALL 01724 850224

We supply to:

- Waste Management Industries
- Chemical Industries
- Petro Chemical Industries
- Liquid Fertiliser Industries
- Oil Industries
- Water Industries & Authorities
- Aggregates Industries

WE ARE CURRENTLY HELPING RAILWAYS WITH WATER STORAGE FOR THE REMOVAL OF LEAVES ON THE LINES

www.plantcraft.co.uk

With you from the ground up.

Tubosider's versatile, high-quality steel stormwater tanks and market-leading customer service provide a long-lasting solution you can rely on.

Discuss your project today:
01744 452 900 | tubosider.co.uk

With our proven technical and engineering expertise, ViaCon's StormWater Solutions and products are designed to meet the challenges of stormwater management. Our corrugated steel products range from stormwater retention tanks and infiltration soakaways to bridges and culverts all manufactured from steel, a material that allows us to design and manufacture sustainable solutions.

TUBOSIDER
UNITED KINGDOM LTD
A PART OF
VIACON

With ViaCon's solutions, you have the competitive edge. Total cost advantage vs competing materials, for any size project subject to vehicle loads and space constraints. Stormwater solutions are often required under parking areas for retail and industrial areas. Our Bridge & Culvert solutions suit many scenarios including access roads to industrial developments or for under public roads where subjected to full highway loading.

Give us a call to discuss your project on:
01744 452900 or visit: www.tubosider.co.uk

ViaCon constructs connections. Consciously.



Automation Technology News

Compact and versatile: PS216- Q200/-Q210 pull- wire switch



The Schmersal Group launches a new pull-wire switch that can be used as a signal generator to start machines, open electrically operated guard doors and gates and as a light switch in lift shafts. Key benefits of the new PS216 switch are its compact dimensions and extreme versatility, enabled thanks to high degrees of protection under EN 60529 and suitable for use in a wide range of temperatures.

Thanks to IP66 degree of protection, the PS216 pull-wire switch is protected against dust and strong water jets and thanks to IP67 degree of protection, is also protected against temporary submersion in water. The switch can be used in ambient temperatures ranging from -30°C to +80°C.

Another practical benefit is that the PS216 operates according to the 'start/stop principle' in that it remains switched on after initial actuation and subsequent release. Only when the switch is actuated and released a second time is the latch released and the switch switched off.

The PS216 pull-wire switch comes in two versions – the Q200 has a holding force of 45N and is suitable for wire lengths of up to 50m, while the Q210 has a holding force of 70N and can be used with wires stretching up to 100m. Pulling on the pull wire actuates the switch function in the pull-wire switch.

Other distinctive features of the PS216 include cable entry via M20 or M12 connector and six different NC/NO contact variants.

Contact Steve Watkins,
T 01684 571980
swatkins@schmersal.com
www.schmersal.co.uk



Surface Finishing & Coatings News

Experts in life extension of materials & critical components

Curtiss-Wright have a commendable history behind them, having been founded by three of the world's most celebrated aviation pioneers, Orville and Wilbur Wright and Mr. Glenn Curtiss, one of the forerunners of naval aviation. Their companies, the 'Curtiss Aeroplane and Motor Company' and 'Wright Aeronautical Corporation' merged in 1929 in order to create Curtiss-Wright. Today Curtiss-Wright is one of the world's leading advanced engineering companies, having diversified and branched out into numerous different technologies across multiple sectors, including commercial and industrial, defence, power,



metals, aerospace and much more.

At the turn of the 21st Century, Curtiss-Wright had grown into a multi-national company, with global sales of over \$2 billion and having acquired almost 60 businesses. Many of these companies still operate under their original name, such as Metal Improvement Company, Bolt's Metallizing, IMR Test Labs, Component Coating and Repair Services and more who now are part of Curtiss-Wright Surface Technologies. These various divisions offer a wide variety of different specialised surface treatments such as thermal spray coatings, solid film

lubricants, shot peening technology and much more.

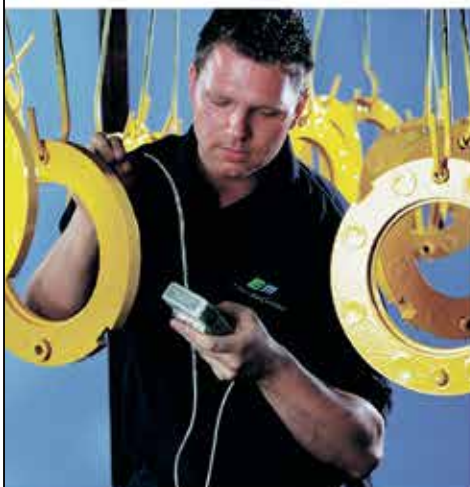
Curtiss-Wright Surface Technologies, one of their most well-known and international subsidiaries, specialises in providing material surface treatment solutions, focuses on enhancing the performance of critical materials and components. As many of their clients are in heavy engineering based industries, critical components are often of vital importance. Not only do they need to be specially designed to precision specifications, but they need to be long lasting and properly maintained too.

T +44 (0)1635 279621
eurosales@cwst.com
www.cwst.co.uk

CURTISS - WRIGHT

Leaders in Surface Engineering for Critical Components

www.cwst.co.uk



- High quality surface coatings
- Improve part wear life and performance
- Reduce maintenance costs
- Standard and tailored specialty coatings

Range of coating services:

- Dry film lubricants
- Corrosion, chemical & environment resistance
- Impingement coatings
- Conformal coatings

Curtiss-Wright Surface Technologies | www.cwst.co.uk

eurosales@cwst.com | +44 (0)1635 279621

BUILDING UPDATE

ISSUE: 653 February/March | www.solutionspublishing.co.uk



KELLY TANKS

Dealing with waste water onsite?

We provide **CONCRETE WASHOUT AND WATER TREATMENT SOLUTIONS** so that you can easily re-use or safely discharge your onsite wastewater



- ✓ SETTLE & RETAIN SOLIDS
- ✓ FLOCCULATION & LAMELLA
- ✓ NEUTRALISE & CONTROL PH
- ✓ REMOTELY MONITOR PH & TSS

SYSTEMS AVAILABLE FROM £45 P/WK



**BULK SAVINGS
AVAILABLE ON
ADSORPTION SACKS
IDEAL FOR CONCRETE
WASH WATER**

www.kellytanks.co.uk | info@kellytanks.co.uk

01889 508944



E-learning for the construction industry



Over the past 12 months, online learning and training have become increasingly more popular as individuals and businesses seek ways to upskill, develop or specialise in key subjects for self-improvement.

The four-stage training and qualifications scheme Concrete Technology & Construction leads to qualifications for the construction industry awarded by the Institute of Concrete Technology (ICT). The training courses range from foundation level through to advanced, and TALENT Concrete Training Ltd., established in 2004, currently provide online distance-learning courses in Stages 2 and 3.

The industry-endorsed four-stage qualification framework is directly linked to the professional grades of membership of the ICT, formerly administered by City & Guilds of London Institute (CGLI).

The course outlines are as follows:

Stage 1: Concrete Practice, ideal for those starting in the construction industry. Candidates who complete this course successfully are eligible for memberships of the ICT at Technician grade and to use the designatory letters TechICT after their name.

Stage 2: General Principles, intended for those involved in the production, use or quality control of concrete. Candidates who complete this course successfully are eligible for memberships of the ICT at Affiliate grade and to use the designatory letters AffICT after their name.

Stage 3: Practical Applications, intended for those involved at a supervisory level in the production, use or quality control activities associated with concrete. Candidates who complete this course successfully are eligible for memberships of the ICT at Associate grade and to use the designatory letters AMICT after their name.

Stage 4: Advanced Concrete Technology, this stage leads to the highest award in concrete technology. Candidates who complete this course successfully are eligible for full corporate memberships of the ICT and to use the designatory letters MICT after their name.

Tony Binns, a Director of TALENT, and an honorary Fellow of the ICT

commented, "TALENT courses enable participants to enrol and commence their studies at any time, with no dependence on the academic year. We have three fully qualified tutors who are constantly available for assistance, mentoring and discussion."

Stages 2 and 3 of the Concrete Technology & Construction training and qualifications programme are presented by TALENT as online distance learning courses. The course content has been written and designed by John Newman, Peter Domone and Tony Binns. Each tutor is successful in their own field and holds vast amounts of experience and expertise in concrete technology, as well as proven, successful techniques and skills acquired to mentor and teach.

"TALENT courses are well-established and recognised by the ICT. Revised and newly introduced ICT learning objectives are incorporated in the course material. In the future, we intend to introduce the foundation level – Stage 1: Concrete Practice, as an online course using the same successful online training methods as we have in Stages 2 and 3. The course material is updated to reflect developments in techniques and changes in British and European Standards and remains accessible to participants long after they have completed the course, serving as an up-to-date reference source," stated Tony.

The courses available are ideal for all producers of precast and ready-mixed concrete, test consultants, civil engineers and building contractors. TALENT training courses fully prepare participants for ICT examinations and have achieved a successful high pass rate, including a high proportion of Credits and Distinctions upon completion.

COVID-19 has had minimal effects on business for TALENT, and the concept of being entirely online has reaped tremendous benefits for the company. "Being entirely online involving no physical personal contact, TALENT courses have enabled those who seek training and qualifications to enrol and progress without any adverse effects from COVID-19," said Tony.

Enrol today to receive in-depth and up-to-date information on constituent materials, specification, concrete properties, production and performance.

**For more information, see below:
T 01723 567432
info@talentconcretetraining.org.uk
www.talentconcretetraining.org.uk**



Castle Steel Buildings
see them on.....X



Demon Designs
see them on.....IV



Bulmer Brick & Tile Co
see them on.....XI



Hauraton
see them on.....XV



Allerton
see them on.....XVI

Lightning & Protection News

Stay safe with lightning protection

South West Lightning Protection provides a number of services throughout the UK including lightning protection, early streamer emission systems, upgrades of older systems, earthing services and design, safety line testing and inspection of horizontal safety line systems and PPE.

Established in 2014, South West Lightning Protection was created by Gary Libby who has over 40 years' experience in the industry. Located in Plymouth, the company also has an office in Scotland. "Our core service is lightning protection installations and testing; we also design new systems. As we are a small company in comparison to our competition, we strive to provide a personal service to our clients," stated Gary.

In recent news, South West Lightning Protection has commenced testing of roof mounted horizontal cable based mansafe systems, permanent ladders, guard rails, and safety anchors. These services are provided individually from the company's lightning protection services, and to save the client money, can be combined.

South West Lightning Protection work throughout the UK to assist its clients with their project requirements regardless of their location. Within its lightning protection service, South West Lightning Protection is able to offer a full installation and testing service, including



BSEN62305 systems, BS6651 upgrades, NFC 17 102 early streamer emission systems and BS7430 earthing systems.

Some recent projects have included chimney upgrade works in Cumbria, new air termination networks in London and a new roof tape system in Plymouth. South West Lightning Protection record all test conditions and results, and a reminder is sent out before the next test is due.

The system South West Lightning Protection use provides an alternative solution to protecting structures where the installation of a British system is not a feasible or a viable option. Some benefits of its early streamer emission device include a more

aesthetically pleasing device as the system only requires two down conductors and earth terminations to provide a path to earth. It is cheap to install and maintain, and as the number of roof conductors, down conductors and earth terminations are reduced, the system has a lower carbon footprint.

Its clients include electrical contractors, ministry of defence, NHS, companies in the sectors of water, commercial, telecoms and facilities management, as well as individuals. The company holds a health and safety accreditation by SafeContractor which audits the company training and safe systems of work. All company engineers are CITB card holders for the work they undertake, and DBS checked.

T 07807 334441
south@lightningconductor.org
north@lightningconductor.org
www.lightningconductor.org

Fire Safety News

Your partner in fire safety



DB Fire Safety Limited is situated in Peterborough, and was set up in 2013 by its Managing Director, David Black. David is a qualified fire risk assessor with over 30 years' experience working in the fire safety industry, with accreditation including from the Institute of Fire Safety Managers, 'Register of Competent Fire Risk Assessors.'

David first launched DB Fire Safety Limited after gaining experience working for two years as an independent fire safety consultant. Recognising the need for his services, David launched DB Fire Safety Limited to provide independent fire safety consultancy, serving clients throughout the UK.

"We are an independent fire safety consultancy specialising in carrying out fire risk assessments," said David Black, Managing Director.

DB Fire Safety Limited's main operations consist of carrying out fire risk assessments and providing fire strategy documents for new buildings under construction.

"In addition to offices and factories, we specialise in carrying out fire risk assessments of schools, residential care premises, and blocks of flats. We also assist building contractors and architects in developing fire & evacuation strategies for buildings under construction or renovation," added David.

Through the company's expertise, DB Fire Safety Limited understands the difficulties in navigating fire safety legislation, and as such, the company prides itself on being 'your partner for fire safety.'

Under David's leadership and industry leading expertise in the fire safety industry, the company is well equipped to assist its clients and help to provide their client's businesses with a comprehensive document to identify potential sources of ignition, the likelihood of a fire occurring and the potential impact that a fire would have on its occupants. An assessment is then made of the documented procedures that outline actions that need to be followed in the event of any fire incident, and the required level of training and practice needed.

One of the main advantages of using DB Fire Safety Limited's services is its honest and efficient service, as an independent business without any conflicting interests.

David explained, "The benefit of employing ourselves is that we have no potential conflicts of interest in supplying or maintaining fire extinguishers, fire alarm systems, or installing fire doors etc."

The company also provides in-house training for Fire Wardens and Fire Marshals, as well as online courses, to keep staff and businesses compliant and safe. In addition, DB Fire Safety Limited also provides training courses for general fire safety awareness, which can be carried at the client's premises or via its online E-Learning modular courses. The online courses are a great resource for refresher training.

As the company looks to its future, DB Fire Safety Limited maintains its overall goal of continuing to provide its clients with the best support possible. David added, "We want to ensure their premises are safe, and that business owners and managers meet their responsibilities under fire safety legislation."

For further information,
please see the details below:
T 0800 7720559
www.dbfiresafety.co.uk



DB FIRE SAFETY

Your Partner for Fire Safety

Member of
The UK Fire Association

IFSM
Institute of Fire Safety Managers
2022

FPA
Fire Protection Association
FPA Member

0800 772 0559
enquiries@dbfiresafety.co.uk

Fire Risk Assessments
Fire Awareness Training
Fire Warden Training
E-Learning Courses
www.dbfiresafety.co.uk

Unit 1, Wittering Service Station
Townsend Road
Wittering
Peterborough
PE8 6AB



Formed in 2014 and having over 40 years of expertise in the lightning protection industry, South West Lightning Protection, provides a full range of services from our office locations, in the UK. With our trained operatives, we are able to provide a full range of services from conception to completion and with out Safecontractor accreditation you can be assured works will be carried out adhering to all relevant health and safety requirements.

Whatever your requirements, we are always pleased to help

South West Lightning Protection, provides a full range of services including:

- Lightning protection, (BSEN62305 Lightning Protection systems)
- Early Streamer Emission Systems (NFC 17-102)
- Upgrades of Older systems.
- Earthing services and design.
- Safety Line Testing
- Inspection of Horizontal safety line systems and PPE

Our qualified Engineers carry out inspections & installations throughout the UK.

Airport Business Centre, Estover, Plymouth PL6 7PP
Also located in Scotland and London

Visit www.lightningconductor.org
Telephone: 07807 334441
Email: north@lightningconductor.org
or south@lightningconductor.org



Lighting & Electrical News

Feeder Pillars for every purpose from Fisher & Company...



Traditional Range
3 & 5mm Heavy Duty - FFP Range
Standard BD Range
Mini Pillar SDMP Range
316 or 304 grade - Stainless Steel
BD Range
GRP Range inc. Bespoke

Traditional

GRP

5FFP2000

Prewired - Bespoke
Choice of locking
Powder Coat Finishes
Large or small orders All metal Feeder Pillars
are made on the premises
Fast turnaround
High quality build & finish
inc EV Charging



Hospital MRI Supply Pillar



Glazed Doors



Event Power supply



63A Service Pillar



Mini Pillar

We have continued to manufacture and supply throughout the COVID-19 pandemic. Whilst we do experience some supply chain issues they are mostly improving and our delivery times are still from next day for stock and from 2-3 weeks for made to order. We continue to monitor the situation and adjust working practices for the safety of our staff and to achieve the delivery you need. Call or email our friendly Sales Team for a Quote or more information.

FISHER & COMPANY

Tel: (+44) 0333 666 2122
www.fisherandcompany.co.uk
info@fisherandcompany.co.uk



Proudly made in Britain

30 years of joinery excellence – Happy Birthday to us!

Bluerun Ltd is dedicated to manufacturing top quality, bespoke custom-made joinery for the domestic and commercial markets. All of our joinery is manufactured on premises using hardwood, softwood or sheet materials. As well as offering finished goods sprayed to a primed or painted finish, Bluerun Ltd also offer other treatments and installation services for some products.

Bluerun Ltd is a family run business and was established in October 1991 by its current Managing Director, John Jones. Based in Wimbish, just outside Saffron Walden in Essex, its factory covers 7,000 sq. ft.², and can manufacture in hard or softwoods, and veneered and painted panels. Its modern spray paint and lacquer facility enables products to leave the factory in a fully finished state. The ethos surrounding the company boasts comradery, team work



and dedication to the customer. Here at Bluerun Ltd we promote quality, family and pride in all that we do. The bespoke items manufactured in our workshops are made to a high standard thanks to the joiners who make them. The whole team take pride in their work.

A proud moment, in 2019, John Jones' daughter was the most recent addition to the board. From humble beginnings, the company has gained remarkable growth within the building trade and is well known for its top-quality joinery. Our bench joinery team is small and has extremely high standards. Whilst we use power tools and machinery, there is no CNC or computer aided design, or drawings used. We pride ourselves on being 'old school,' and still use hand tools to finish off many of our bespoke items. Everything is designed in-house, that is if no drawings are supplied by the clients.

For the commercial industry, the majority of its production is for commercial builders and manufacturing. Bluerun provides all type of commercial joinery products from large-scale repeat production runs of windows, frames, and doors, to both large and small-scale customers for internal and external projects. We also produce

high quality joinery to meet the exacting standards of conservation areas or heritage sites.

We also provide domestic bespoke joinery from custom door replacements to bespoke furniture. Our portfolio includes decking, balcony balustrading, and gazebos as well as replacement stairs, banisters, mouldings or bespoke cabinets and bookcases for interiors. Bluerun Ltd has even designed and produced a custom-made Wendy house for a private client. Whatever your joinery needs, Bluerun Ltd can provide exactly what you're looking for.

October 1991 marks the company's 30th anniversary of incorporation – what a tremendous achievement made by all. We are all extremely proud. The company couldn't have made it this far without our joinery team and our loyal clients we have worked with over this time. Some employees have worked with John since the 1970s, at a previous company, and we believe that we have a great and loyal team.

T 01799 599995
dee@bluerunltd.co.uk
www.bluerunltd.co.uk



The South West's Number One Timber Building Company – MAC Cabins



MAC Cabins Limited is a fast-growing Timber Building company based in Okehampton, Devon, with over 30 years' experience in the construction industry. Proud to be the providers of one of the largest selections of; Timber Buildings, Log Cabins, Leisure/Holiday Cabins & Glamping Pods, in the heart of the South West of England.

To compliment the extensive ranges of timber buildings, MAC Cabins also offers a vast variety of other Timber Frame & Modular Frame options, providing one of the widest selections of timber building options, within the market-sector.



For all timber frame styles, MAC Cabins works with self-build and custom-build projects, where the initial design has already been completed with architects. We help to guide small to medium-sized developers, on sites of 1-30 plots, to identify the best way to convert vision into reality.

MAC Cabins continues to expand its vast portfolio of designs and build options, allowing you to select the perfect combination of style, size and price, confident you will find the perfect selection to meet your growing demands.

With every building, you will receive a structure that has a higher standard specification than most other comparable products.

Contact
T 0800 999 1564
help@maccabins.co.uk
www.maccabins.co.uk



QUALITY, CUSTOM MADE JOINERY



Bluerun Ltd have been manufacturing top quality, purpose made joinery for the domestic and commercial markets for over 30 years.

Contact us to discuss your requirements.



Please visit our website: **www.bluerunltd.co.uk**
Tel: **01799 599995** | Email: **dee@bluerunltd.co.uk**
f bluerunltd @ bluerun_joinery

MAC Cabins Classic Post & Beam Garages & Car Ports, available in Oak or Douglas Fir, with or without accommodation above

For Timber Frame Options, MAC Cabins work with Self Builders and Developer/Builders with their custom design projects, to identify the best way to convert vision into reality.

MAC Cabins Pullman Glamping Pod Available now for immediate delivery. An example of our Glamping Pods & Timber Buildings available for the holiday and leisure industry.

Annexe Buildings
Garden Rooms
Garages & Car Ports
Home Offices
Glamping Pods
Post & Beam Buildings
Log Cabins
Timber Lodges
Timber Frame

Finance available with Approved Finance, on all our buildings and timber products. Finance subject to status.

UNIT 4, CRANMERE ROAD, EXETER ROAD INDUSTRIAL ESTATE, OKEHAMPTON, EX20 1UE **0800 999 1564** **WWW.MACCABINS.CO.UK**

Demon Designs: Experts in glass

Building Update is always looking to showcase companies who are offering only the highest quality services, delivering an exceptional customer experience throughout the entire working relationship.

Established in 2011 by Dominic Meakins, Demon Designs specialises in bespoke solutions for glass structures, offering consultancy, design and build services to exceed its clients' requirements every time. Fuelled by a commitment to excellence, the team at Demon Designs always goes the extra mile to ensure complete customer satisfaction, no matter what the project size.

"We pretty much provide everything glass related," Dominic explained. "A big seller last year was the switchable glass panels that turn from opaque to clear using a remote control or light switch. We can put this in almost any glass installation, from wall panels to windows – we have used it on glass floors and even to create a two-way mirror."

One of Demon Designs' key advantages is its comprehensive service, offering everything the customer might need for their project. "Many of our customers want the hassle removed. For example, if they want a walk-on glass floor installed, they don't want to get a builder in to cut the hole, a plasterer to make good and a decorator to finish it off. We can do the lot, including engineers' calculations." Indeed, with the ability to provide a one-stop-shop for all project requirements, Demon Designs is the number one choice, no matter how complex the design.

Recently, Demon Designs joined Check-a-trade, with a view to obtaining more domestic customers in preparation for the uncertainty of the current commercial market. "This has had some success, but we still find that the vast majority of our customers are either returning customers or new customers by recommendation, and you can't really get a better endorsement than that!"

Indeed, as well as a loyal customer base, this commitment to customer satisfaction has resulted in impressive successes for Demon Designs over the past eight years, and this year has been no different. "It's been an interesting year for us," Dominic told us. "We have seen a shift in the type of projects we win, moving away from large commercial fit-out projects towards domestic 'Grand Designs' type projects and installations.

"In the past year we have designed and installed two glass stages, which were very

interesting projects and highly pressured with regard to time and expectation. We were also very lucky to have been awarded the contract to install all the glass for the hospitality areas at Tottenham Hotspur football club, as well as fit out several of the NFL areas."

In the coming years, Demon Designs is looking to complete more complex projects, to help the company grow even further and build upon its achievements since its inception eight

years ago. "We want to take on more bespoke projects, big or small. I personally believe that you can only improve by pushing your boundaries, and this is true for business also. We are constantly taking on more challenging projects, often from other companies who don't want the risk. The great thing about this is that we often work for companies that would be considered competitors in other fields."

Indeed, Demon Designs' future ventures are

highly anticipated as it continually develops and improves upon its capabilities. The company is always interested in taking on new customers, either commercial or domestic, so get in touch using the details below or head to the website if you wish to discuss your ideas.

Contact
T 01903 733206
info@demon-designs.co.uk
www.archglass.co.uk



Structural and Architectural Glass

Demon Designs offer a comprehensive range of products and services to a wide variety of construction sectors. From design and consultancy work to full design and build, we can provide a custom made service to meet your requirements.

Specialising in unique glass and metal structures, we can supply and install totally bespoke solutions or standard off-the-shelf products.

- CAD Design Services
- Toughened Glass
- Laminated Glass
- Glass Worktops & Coloured Splashbacks
- Balustrades
- Juliette Balconies
- Bespoke Shower Screens
- Sliding Glass Doors
- Flush Glazed Doors

Please contact us on:
01903 733206

Email: info@demon-designs.co.uk
www.demon-designs.co.uk



Door scheduling made easy, fast and error free

Established in 2002 by Derek Brown, RapidSpec is the first software developed for automatically creating door schedules, drawings, project estimates and bills of materials. Designed to eliminate errors in door set specification and the production of door schedules, RapidSpec is an industry leading software product proven to find any doorset's details from any customer and any project within 15 seconds.

"As software specialists for manufacturing processes, we have produced a software system for fire door



manufacturing that not only improves productivity, ensures a faster turnaround and is proven to eliminate a greater number of errors, but also results in lower admin costs whilst producing a higher return on investment than other software systems on the market," stated Carol Cole, Business Consultant.

With RapidSpec everything is instant. Long gone are the days of spreadsheets, RapidSpec offers instant quotations that include all of the auto generated doorset drawings required. Simple to navigate, the operator uses multiple

choice, yes and no questions together with the required dimensions and RapidSpec does the rest. The process is time efficient, cost effective and simple to use.

Manual data entry falls victim to human input error, which is both time consuming and frustrating for the employer and the employee. It not only impairs performance and efficiency but can result in higher operating costs and fluctuating levels of performance and continuity. With this in mind, RapidSpec offers two services: Fire Door Scheduling and Door Manufacturing Software.



Robin Bell, Sales Manager at Rapid Spec

Door Manufacturing Software allows manufacturers to produce detailed door schedules much more efficiently than traditional spreadsheets, calculators and catalogues. RapidSpec uses the existing skills of your estimator who will be able to create professional quotations immediately with just one hour of training. The orderly input of data ensures that nothing is left out and everything is checked. From the data input RapidSpec then automatically creates a scaled, detailed, and dimensioned doorset drawing.

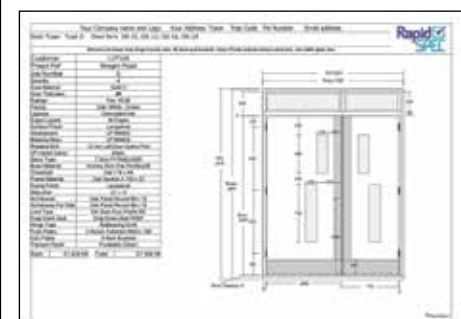
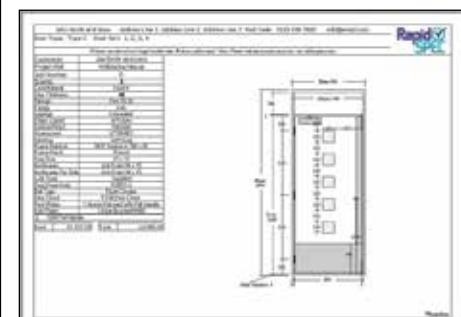
Ideal for manufacturers and fabricators of custom, standard interior and exterior doorsets, as well as architects, contractors and fire door manufacturers. "We have now introduced a barcode functionality and we are constantly updating and improving the software to create greater efficiencies for our clients," said Carol.



It is vital fire doors are designed and manufactured to the right specifications to ensure they have the correct level of fire resistance. Fire Door Schedule is a door specifying and scheduling software from RapidSpec that allows door manufacturers and designers to quickly and simply create accurate fire door schedules from standard specification sheets. The simple process is designed so that the operator only needs to answer a few questions and input the dimensions of the door for the software to then produce an accurate fire door schedule complete with diagrams, dimensions, project estimates and bill of materials.

Over the years, RapidSpec been continuously developing its software to offer the best solutions to its customers. Despite the pandemic, the company has achieved further growth and has big plans for the future. Robin Bell, Sales Manager at Rapid Spec commented, "We are expanding internationally, with a focus on the Commonwealth in the first instance. We have also just recorded a video highlighting the enormous benefits of using RapidSpec on our customers' productivity. This should be available on the website very soon."

For more information, please see below:
T 03337 000017
robin@rapidspec.co.uk
www.rapidspec.co.uk



Eco-Friendly Plastic Products News

The Zero Maintenance Alternative to Wood



Recycled Plastic

- 100% recycled and recyclable
- Impervious to fungi, algae, insects
- Never rots, splinters or cracks
- Graffiti resistant
- UV protected
- Eco-friendly and low carbon
- 100% maintenance-free
- Lasts a lifetime



sales@kedel.co.uk | www.kedeltrade.co.uk | 01282 861325

DCON Safety Consultants

Established in September 2016, DCON Safety Consultants is a leading independently-owned Built Environmental Safety, Health & Wellbeing Consultancy based in Dublin city centre. Managing Director Diarmuid Condon explains more.

The consultancy prioritises and specialises in the highest levels of informed and intelligent advice, senior project resource allocations and compliance assurance. It knows that every project with potential benefits also has potential risks with the art of planning centring on the coordination of these two zones of uncertainty. DCON's team of highly-experienced construction professionals consistently ensure your best interest and statutory conformity.

DCON is committed to understanding the specific needs, goals and desires of each individual client and project. Upon gaining this special understanding, it commits itself to the implementation of a design and construction management plan that will meet or exceed these requirements. Honesty, integrity, trust and professionalism are the cornerstone of every job.

The company's greatest resource is its exceptional team of technical construction and safety consultants who provide team-oriented services on an as needed basis. DCON's consultants and alliances with other key

Eco-Friendly Plastic Products News

Eco-Friendly, Low Carbon, Maintenance Free Solutions

Concern for the environment and action to modify our behaviour is strongly supported by young and old alike. Climate change is not a myth. It is already happening.



In addition, the cost of ownership is often not taken into account when pricing up a project, yet it's a significant additional cost.



If you are going to spend the money, time and effort, doesn't it make sense to design properties that stay looking good, without an ongoing cost for maintenance?

The Solutions

Recycled plastic profiles are an ideal replacement for traditional building materials and with no requirement for ongoing maintenance.

Rapid Growth

A family business Kedel Limited, based in Burnley have just celebrated their 12th birthday. They've experienced extraordinary growth of approximately 30% a year, since 2010.

Industry Recognition

It's clear that the building industry is eager to play a part in reducing its impact on the environment, having previously been regarded as a major contributor to global warming and waste plastic pollution.

Typical Example

Kedel's decking products were used for the viewing platforms on the Archelor Mittal Orbital Tower at the London Olympics to reduce its carbon footprint. More recently the National Trust is replacing wooden fencing with recycled plastic from Kedel as it means they will just need to do the job once.

Wide Range

Other popular products include: V-Cladding, T&G, Decking, Fencing, even Outdoor Furniture, the list is endless. It's as easy to work with as wood, produces 250% less CO₂ in manufacture compared to virgin plastic.

T 01282 861325
sales@kedel.co.uk
www.kedeltrade.co.uk



individuals and organisations allow it to support clients in all divisions of design and construction safety.

With DCON, the client is assured of top-level focus from its team of professionals. Bringing recent Lessons Learned



from its projects, the company has delivered Pre-Planning & Post Planning Health & Safety and PSDP | CDM Consultancy services to multiple sectors, understanding and managing key success factors and risks. DCON Safety Consultants is relentless in supporting safe outcomes and safe design quality to realise your vision. Our controls approach is rigorous, tackling the big issues head on.

T +353 (0)1 611 1556
info@dconsafety.com
www.dconsafety.com



Leaders in Built Environmental Safety and Health and Wellbeing Consultancy

Consulting on various aspects of project design, constructability and operational lifecycle matters for local and global commercial clients.

CONTACT US:

DCON Safety Consultants
Suite 5, Fitzwilliam Square East, Dublin 2
Email info@dconsafety.com
Phone +353 (0)1 611 1556

www.dconsafety.com



YOUR MATERIAL HANDLING PARTNER
FORKLIFT HIRE - FORKLIFT SALES
SERVICE & MAINTENANCE

We pride ourselves in supplying a prompt, reliable & helpful service

Over **40 years** of experience helps us deliver a first class service to our customers.



THE RIGHT SOLUTION FOR EVERY APPLICATION



RANGE OF SCRUBBERS
AND SWEEPERS



PREPARED FOR ANYTHING



RANGE OF ACCESS EQUIPMENT
TO COVER YOUR NEEDS



WE PRIDE OURSELVES IN SUPPLYING A PROMPT RELIABLE AND HELPFUL SERVICE
davison-forklift.co.uk T 01952 915060 sales@davison-forklift.co.uk



www.tomorrowsforests.co.uk

Tomorrow's Forests can assist with the supply and planting of high quality local trees as well as sundry products required for your woodland creation project.

Our professional and dedicated team will carry out all the necessary surveys of your property, produce detailed designs and, with our skilled planters, implement the new woodland creation to the highest standard to meet your exact requirements.

We will provide help and advice throughout the process and ensure that specific government funding requirements are met. Following the completion of your woodland creation project, we can offer ongoing maintenance, upkeep and professional advice.

There are many advantages to the planting of trees on less productive or unused land areas and farmers and landowners can now obtain a number of government grant and funding options to help with establishing new woodland areas.

Woodland creation projects can be undertaken on suitable land from 3 hectares up to larger areas of over 10 hectares and can provide substantial environmental and financial benefits.

Woodland Creation Benefits Include:

- Timber production
- Increasing land value
- Providing shelter for crops and livestock
- Providing new wildlife habitats
- Stabilising river banks
- Game cover
- Improving the amenity value

Vandecasteele Houtimport's No.1 objective – 100% Certified Timbers from 2025 onwards

A family-run timber company Vandecasteele Houtimport, founded in Belgium in 1883 is today run by the fourth and fifth generations of the Vandecasteele family.

A modern and expanding business, it has a long-term commitment to service a wide variety of customers in the construction, joinery, cladding and furniture sectors, as well as the high-end marine industry.

Located right in the heart of Europe, with easy road access to customers in all European markets, Vandecasteele Houtimport has over the years consistently developed its long-term strategy to become Europe's number one timber stockist.

Vandecasteele Houtimport imports timber and timber products from over 45 countries worldwide. Its facilities are located in Kortrijk, Aalbeke, Belgium, where the company specialises in the import, trading and export of tropical hardwood from Africa, Southeast Asia and South America. The company also provide Scandinavian and Russian Softwood, Siberian Larch, North American Soft and Hardwood and European Hardwood.

The company has been passed down through the generations to its current owner Stefaan Vandecasteele. Stefaan took over the running of the company in 2000 and together with his son Louis, keep the company's family spirit alive.



Its impressive set up allows its storage facility, which is situated on 39.5 acres of land to accommodate more than 150,000m³ of sawn timber products. The total covered space of the company's main warehouse reaches 16 Hectares, Implanted in a site of 60 hectares. Timbers coming from all over the world are centralised in one location, only a stone's throw away.

Working alongside timber importers, timber merchants and wholesalers, the company is able to deliver stock that is difficult to source within days using its own fleet of 18 vehicles. In a matter of days, Vandecasteele Houtimport has the resources and ability to adapt and bridge the gap between sources of supply in Africa, Far East, South America and North America to Europe. This makes the company the first choice with many importers and merchants.

The company has over 130 timber species in stock including the new addition of certified European Oak in Joinery, Prime and Super Prime grades and certified steamed Beech in all qualities. From the most expensive



and rare hardwoods, to a full assortment of softwoods in all qualities and sizes, everything is neatly bar coded and displayed.

CERTIFIED timbers: Its impressive and vast stockholding of hardwoods and softwoods is coupled with strong environmental credentials (FSC®, PEFC, OLB, LegalSource™) and an efficient, accurate processing of customer orders. The company has set a challenging goal to trade in 100% certified timbers only from 2025.

Experienced staff unload incoming lorries and prepare outgoing deliveries and all parcels have a quality file in which the quality of the parcel is registered, with quality control inspections of goods at the ports of Antwerp or Ghent or in Aalbeke.

In 2021, Vandecasteele Houtimport has Invested in 17 new VOLVO trucks with Volvo Connect tracking system, 5 new side loaders of which 1 full electric and 10 new trailers. The racking system has also been extended which will now reach 5 miles.

The company has launched a dedicated customer portal, which allows customers to order their timber online. In a world where consumers seek instant response to any 'search,' Vandecasteele Houtimport's sales representatives have quick to real time information on all inventory moves from all over the world. The company is also investing in new IT tools to track and trace the timber from source and insure the provenance of the timber is EUTR compliant.

Aligns with the 17 sustainable development goals

Vandecasteele Houtimport has set a challenging goal to stock 100% certified timbers from 2025. Currently, 100% of the softwoods the company stock is already certified and over 65% of the tropical hardwood. This number is continuously growing and makes Vandecasteele Houtimport the biggest stockholder of certified tropical timbers in Europe.

Vandecasteele Houtimport now provides its newest addition of stock that is certified European Beech and Oak in Joinery, Prime, Super Prime grades and flooring. The variety of stock from the company embellishes the company's taglines of 'Choose Life, Choose Wood' and 'Using timber is good, using certified timber is wonderful!' Vandecasteele Houtimport really do love what they do and have a strong passion to grow within the industry. One way in which the company is making growth take place is its reaction to how BREXIT has and will change the



industry. To combat new rules and importation structures, Vandecasteele Houtimport has set up a company in the UK – Vandecasteele Timber Ltd – that facilitates the trade to all UK partners.

Vandecasteele Houtimport endeavour to show that timber is the world's most ecological and sustainable material. And its future plans only echo the company's approach to sustainability within the industry. Vandecasteele Houtimport has a dedicated team to ensure all due diligence is up to date and in addition to the strict process, the company has invested in a forest engineer in Brazil to ensure full control on the CoC of the Brazilian timbers purchased.

Circularity

Vandecasteele Houtimport are passionate about timber being used for sustainable building and construction material. Every step the company make boasts several ecological advantages showcasing the use of timber compared to traditional materials. With a low embodied energy and minimal carbon impact, timber really is the most sustainable material. It has an ecological, recyclable and biodegradable nature, which is why Vandecasteele Houtimport is implementing a strict sustainability policy in all of its future actions and activities.

Long-term vision

Every step Vandecasteele Houtimport take, succinctly reveals the dedication and passion of the company and its future goals. As the company strive to be the European market leader in the trading of the richest assortment of certified timber, exclusively sourced from well-managed certified forests it is not going to be an easy journey,



but it will most certainly be rewarding. With the goal of maximising the social, economic and environmental value of timber, now and for future generations, Vandecasteele Houtimport is creating economical sustainable change in a world that needs it most.

Since the year 2000, Vandecasteele Houtimport has committed itself through the Corporate Sustainability Charter by signing up to environmental objectives exceeding applicable environmental legislation.

This year, Vandecasteele Houtimport has achieved the Charter for the 20th time in a row, which makes Vandecasteele one of the few laureates who participated for 20 consecutive years and successfully completed the trajectory.

All the initiatives are linked to the 17 sustainable development goals of the United Nations. A good annual assessment ultimately yields an annual certificate of the Voka Sustainable Business Charter. When the final balance is positive after three years, and companies have elaborated at least one action in each SDG, companies receive the internationally recognized Unitar-SDG Pioneer certificate.

Vandecasteele Houtimport is the first timber company in the world to have obtained the Unitar- SDG Pioneer Award!

Buying from a responsible supplier makes YOU a responsible buyer!

For more information on Vandecasteele Houtimport and the products or services it provides, please see below:
T +32 56 43 33 00
www.vandecasteele.be



Finding the right funding for you

In this issue of Building Update, we have selected SME funding UK Ltd as our Company of Choice 2022.

SME funding UK has over 20 years' of experience, specialising in commercial funding and invoice finance, and is well equipped with the resources, expertise and knowledge to assist you throughout the process of business funding. The company understands that as a business owner, you need quick results that provide you with the best funding solution. Utilising its expertise and access to over 150 lenders, SME funding UK has built a solid reputation on finding the right funding for its clients, echoed by its multitude of happy clients and testimonies.

SME funding UK Ltd is a business finance broker, which was established by current Owner Henry Audley-Charles, to source almost any form of business finance for UK and Channel Island businesses, using traditional, alternative, peer to peer and fin-tech solutions. Henry maintains an impressive amount of experience and has been working in the banking industry for a multitude of years. Working with all the major players in the industry, Henry has worked with Lloyds, RBS and HSBC in Commercial and Senior Business Development roles as well as being the Regional Sales Director for an Invoice Finance Company.

Working both ethically and transparently, the company truly takes on the importance of finding not just funding, but the RIGHT funding solution for its client, saving them time and presenting its clients with the straight facts. Expert customer service is at the forefront of the company's operations, utilising its finance background of nearly 30 years' experience of banks, invoice financiers and independent funders; SME funding UK Ltd boasts the skills, expertise and connections to provide the best individual funding solution.

SME funding UK Ltd assists its clients to find the right



funding for a variety of needs including helping with new and used: equipment, tankers, tools, trucks, vans and yellow plant. This is in addition to business finance requirements, including: Asset Finance, Bridging, Construction Finance, Personal Guarantee Insurance, Buy to Let, Cashflow, Commercial Mortgages, Invoice Finance, Loans, Property Development and Working Capital.

SME funding UK Ltd maintains a varied and vast amount of accreditations, positioning the company firmly at the forefront of the industry for its expertise. Some of its most notable accreditations include being authorised and regulated by the Financial Conduct Authority, a



member of the National Association of Finance Brokers and Financial Intermediary & Broker Association, and is registered with the Information Commissioner's Office. As the company is FCA authorised, this provides SME funding UK with access to better quality lenders ensuring that they can offer their clients the best deals.

Committed to assisting any UK business needing business finance and with constant expansion in terms of its services, SME funding UK Ltd also provides consultancy services to SMEs to help improve business systems and processes, specialising in the sales ledger and sales



order process. In addition, the company is consistently searching for new financing and services to offer its clients and has recently launched aviation and marine financing.

With its reputation being built on continuously exceeding expectations for its clients, SME funding UK Ltd is looking ahead to its future, set on continuing its hands on approach and dedication to clients. Henry added, "We plan to continue building a sustainable business working ethically and transparently with both our clients and lenders."

For further information, please see the details below:
T 01223 848844
www.smefunding.uk



Building Products & Services News

Steel buildings to suit all budgets

Founded by Dave O'Brien in August 2017, Castle Steel Buildings has evolved from a basic start-up, operating on what was essentially a franchise model, to a rapidly growing construction company with a permanent install team and a developing back-office operation.

Previous to the company, Dave O'Brien had worked in the steel construction industry as an installer for over 20 years. After many years, Dave was keen to build his own business that offers bespoke steel buildings with a guaranteed installation option. On the search for a business partner who could run the administration and logistics side, Dave approached John Rosling, who had a number of years' experience in public and private sector management. Since joining, the business has grown in strength at a fast pace.

Today, Castle Steel Buildings is well known as an industry leader in its field. Offering a number of services to suit every budget

including steel buildings for agriculture and rural, commercial and industrial, garages and sheds, as well as cladding installation.

Understanding that customers prefer a personalised service, Castle Steel Buildings is committed to ensuring 100% satisfaction from start to finish and prides itself on its; affordability, to offer cost-effective light weight composition of the buildings designed to reduce production and installation costs; versatility, with a range of buildings to suit every application; and top British quality, endeavouring to always support British economy. all Castle Steel Buildings materials comply with British Standards BS 6399(pt 2) and exceed ISO9001-200.

"These are among the many qualities that set us apart from our competitors," mentioned John Rosling, Director.

COVID-19 has left a dramatic impact on steel production over the last 12 months, with many steel mills across the world shutting down. As such, steel suppliers are running low on stock, the price of steel has risen and there are incremental delays to customer orders. Castle Steel Buildings has worked hard to ensure this implication has not affected its production and most of all, its service to its customers.

"One of the major things we've noticed over the last year is that many people are put off having their steel building because of the

cost of raw materials, something that has increased enormously with the pandemic and global shutdown. We've met this challenge by partnering with Peregrine Finance in York to offer a bespoke finance solution. This is a great option for companies looking to get their projects off the ground quickly while spreading the cost over time," said John.

With more to offer in its arsenal, we asked John what the company's future plans were, he answered, "Alongside a determined go for growth mindset, we're focussed on developing our range by introducing hot rolled steel designs. Cold rolled steel is inexpensive and effective but there are some limitations in the scale of building that can be done in cold rolled steel."

For more information, please see below:
T 01302 301402
info@csbuildings.co.uk
www.csbuildings.co.uk



TALENT-ctct

CONCRETE QUALIFICATIONS FOR ALL

Enrolments now invited!

On-line training leading to Institute of Concrete Technology qualifications

Concrete Technology & Construction

- General Principles
- Practical Applications

Courses approved by

The Institute of Concrete Technology

FURTHER INFORMATION:

info@talentconcretetraining.org.uk

+ 44 (0)7967 334640

www.talentconcretetraining.org.uk

Peter Minter: The Brickmaker's Tale

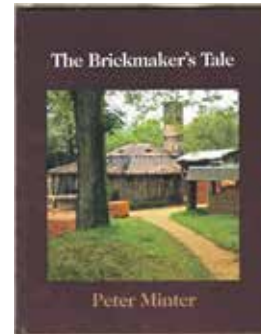
Peter Minter and his son Tony are well-known for their father and son business, Bulmer Brick and Tile. The family-run business has successfully been running for over 80 years and is extremely proud to say they have excellent expertise and knowledge in this industry.

Peter Minter wrote his own book, *The Brickmaker's Tale*, which entails a unique history of the Bulmer Brickyard and the craft of brick-making. Bulmer Brick and Tile pride themselves in saying that they are the most traditional in the UK that still uses methods to make bricks



which dates all the way back to 1450. The first section of *The Brickmaker's Tale* focuses on the early history of the site, the second part of the book explores from 1936 onwards when the Minter Family acquired to the company.

Finally persuaded by family and friends, Peter Minter wrote a book that recorded some of his unique knowledge and memories in a book. The book highlights the story of the Brickyard and the people that have worked there throughout the years. *The Brickmaker's*



Tale touches on the recreation of historic bricks for National Trust properties which include Hampton Court Palace and Blickling Hall in Norfolk, not to mention the bricks for the extension of St Pancras Station in London.

The Brickmaker's Tale is available from local bookshop Kestrel in Sudbury Suffolk or direct from Bulmer Brick & Tile Co Ltd.

Contact
T +44 (0)1787 269232
bbt@bulmerbrickandtile.co.uk
www.bulmerbrickandtile.co.uk

T 01787 269232
bbt@bulmerbrickandtile.co.uk
 Please visit: **www.bulmerbrickandtile.co.uk**

Bulmer bricks are made from the finest London Clays, dug from our seams almost continually since Tudor times. All Bulmer bricks are hand made, using traditional methods of making, drying and are fired in a coal burning, down draught kiln. We are a small family business continuing the traditions of brickmaking on this site dating back to the Middle Ages.

We work on large projects for the National Trust, English Heritage and Historic Royal Palaces, but are just as proud of some of the small private work undertaken by individuals.

The Brickfields, Bulmer, Sudbury, Suffolk CO10 7EF
Tel: 01787 269232
Fax: 01787 269040
Email: bbt@bulmerbrickandtile.co.uk

Traditional brick production specialist



The Bulmer Brick and Tile Company, based in Suffolk, is a family-run business established in 1936. With over 80 years' experience in the industry, the English company truly is a master of its craft.

The Bulmer Brick and Tile Company is renowned for its traditional handmade bricks which, fired in a down draught kiln, have a distinctive finish that blends well with the original London clays bricks. The beauty of the Suffolk company's bricks lies in their traditional production method. The bricks are made from clay dug from the same clay seam used since Tudor times. The wealth of experience amassed by the company coupled with their respect for the process is what separates The Bulmer Brick and Tile Company from the competition.

Having produced bricks for reputable clients such as the National Trust, English Heritage and Historic Royal Palaces, the company is able to lend its services to both private and commercial developments. Its facings and specials can be made with almost any texture; with 150 different sizes of facings and a range of over 5,000 special shapes, including all standard plinths, squints and copings and extends to purpose made chimney bricks, terracotta, mullions, jambs, floor bricks, pammets, decorative plaques, garden edgings and a full range of rubbing blocks.

Aside from offering a wide range of clay brick solutions, The Bulmer Brick and Tile Company further offers a select number of additional materials. It is a stockist of Singleton Birch Natural Hydraulic Limes and Lime Putty, available in a range of strengths – NHL2, NHL3.5, and NHL5 – and sold in 25kg bags or 1 tonne bulk bags. Lime has proven to be the material of choice when laying the brick specialist's bricks and especially in the case of conservation work, with its natural strength and tendency to give 'movement' in the construction process favourable.

Among the additional materials offered are lath, chestnut lath and riven oak supplied in bundles, used for plastering or for roofing and the application of shingles. Further, The Bulmer Brick and Tile Company offers sheep's wool insulation, an efficient and eco-friendly insulation solution.

Contact
T 01787 269232
bbt@bulmerbrickandtile.co.uk
www.bulmerbrickandtile.co.uk



Dolwin & Gray

Established 1969

Professional, fully trained & qualified Tree Surgeons & Landscapers in & around London & the South East.

Hedge, Copse & Woodland planting
 (Transplants to semi-mature)

Cultivation & Seeding Paddocks etc Turfing.

All aspects of Tree Work, Surveys and Reports to BS5837:2012
 Trees in Relation to Design, demolition and construction – Recommendations.

Tel: 01892 853232 • Fax: 01892 853434
Email: enquiries@dolwinandgray.co.uk
www.dolwinandgray.co.uk

LE TONKINOIS

NATURAL OIL VARNISH

Le Tonkinois is a traditional natural oil based varnish. It is perfect for outdoor, indoor or marine use. With Le Tonkinois varnish the options really are endless.

Combining unrivalled long lasting protection on materials including wood, metal, cork, stone, teak, mdf and grp Le Tonkinois varnish leaves absolutely no brush marks and will restore the beauty and colour of the wood. Flexible enough to move with the timber and able to withstand abrasion and impact, Le Tonkinois varnish is resistant to boiling water, UV, petrol, diesel and sea water. It won't crack, chip or peel off, making it perfect for all outdoor purposes as well as indoor.

www.letonkinoisvarnish.co.uk
01628 548840

Waterproofing you can rely on

Carlisle CM Europe (CCM Europe) manufacture high quality EPDM waterproofing membranes for flat roofing, façade systems and building solutions for the construction industry.

CCM Europe is a dynamic company with ease of installation and durable roofing systems including EPDM & Liquid Waterproofing. As a leading manufacturer of waterproofing membranes and sealants, our market leading products are suited for a wide range of flat roof substrates for both new build and refurb.

The market leading advantages of Resitrix® is the unique combination of materials: the synthetic rubber EPDM and polymer-modified bitumen – making it a durable hybrid membrane. Our extremely flexible, single-layer waterproofing membrane can thus be applied on almost

all substrates. The membranes are welded together quickly, easily and safely using a hot-air device without any need for naked flames,” stated Shail Chauhan, Marketing Manager.

One particular product worth noting is the ARBOFLEX® PU, a single component liquid made from pure polyurethane, which, once cured, forms a seamless elastic membrane without any joints. The material properties of ARBOFLEX® PU enable it to be air tight and waterproof on a range of substrates.

Alongside its high performance and wear-resistant membrane, ARBOFLEX® PU can adapt to any surface: uneven, curved or irregular, and with its fast-curing properties can be walked on in 24 hours. Comprised of one component that can be applied straight out of the tin, it allows for fast and easy installation, is green roof compatible and weather resistant, so it can be used all-year round.

CCM Europe is not only dedicated to offering state of the art EPDM flat roofing seal solutions, but to also extend its expertise and knowledge to other professionals through its dedicated EPDM and PU Liquid system roofing training courses at the CARLISLE® ACADEMY. Designed by professionals for professionals, with a view that knowledge is sustainable material. The more you share it, the more you get back. The training content is intended to enable attendees to learn of the proven advantages of EPDM waterproofing solutions relating to roofs, façades and building in an up-close and hands-on manner. For more information, visit: www.academy.ccm-europe.com

Allowing for change creates space for continuous growth and a new perspective. We have recently strengthened our sales and distribution network covering the UK and the ROI market. We have also welcomed a few new

members to our sales team, Charlie Patrick and

Crawford McAllister. Charlie looks after our Eastern region and Crawford looks after the North and Scotland.

With ambitions to continue their impressive growth, CCM Europe plans to keep collating together more opportunities for further development. As a dynamic company that aims to support and motivate its people as much as possible, it is continuing to review and develop new products all the time.

T 01623 627285
info.uk@ccm-europe.com
www.ccm-europe.com



TuffStuff® Flexible GRP, the latest GRP roofing innovation from Tuff Waterproofing

TuffStuff® has created the best multipurpose GRP roofing system on the market, with its TuffStuff® Flexible GRP already receiving rave reviews from customers. One resin with endless possibilities, the Flexible GRP provides an exceptional combination of versatility and durability. Quick to lay, with no need to strip or re-deck a roof, this fast-curing system saves time and money.



Essentially, it is a single-resin solution, which can be applied to a multitude of surface types and structures including vertical sections. The resin can be applied directly to felt, asphalt, single-ply, GRP, concrete, timber or metal and with its combined fast-curing system the resin can be walked on within 30-60 minutes of being laid. Its highly flexible, extra-tough, seamless waterproof membrane rapidly breaks down with CSM reinforcement for quick and tidy detailing. Once laid and whilst curing, the TuffStuff® Flexible GRP is showerproof.

There is no need to hunt down two or three tubs, as its one-pot system means one coat can last up to 10 years and two coats, 20 years (the 20-year system qualifies for a 20 year Product Warranty). Negating the need to strip back and replace, Flexible GRP saves time and money by overlaying a roof. To book a TuffStuff® Flexible GRP product demo, visit the company website below.

TuffStuff® is the UK's premium designer, and supplier of heavy-duty GRP waterproof flat roofing systems. Located in North Yorkshire, TuffStuff® supplies through a dedicated stockist network throughout the UK. The company's experienced product development team is always pushing the boundaries to create products that revolutionise the industry and effectively, make roofing systems simpler. British born and bred, the company works closely with its customers and its own UK based manufacturing facility to produce an evolving product range that is suitable for multiple flat roof applications.

The company is heavily established in 30 years of research and development and has been thoroughly testing and designing products for roofing applications since the 1980's. Perfect for use within a domestic or commercial environment, the company has grown year-on-year to become of the industries finest and most valuable assets to the GRP flat roof market. Tuff Waterproofing is committed to fulfilling its ecological targets over the coming years.

Deploying a mission to create successful long-term relationships with its customers by understanding their needs, TuffStuff® deliver a range of market-leading products alongside a premium support service. Other products include resins and catalysts, reinforcing materials, roof trims, application tools, and decking boards. Each product category holds its own product range that embody the same TUFF traits designed to tackle all the elements.

Further to its product range, TuffStuff® is proud to offer the most comprehensive training programmes within the flat roof industry. It has a dedicated team on hand to deliver individual and group training sessions on the TuffStuff® installation process, the products within the range and how goods must be stored to maintain its optimum condition. Striving to provide all customers with the highest standard of flat roofing products, TuffStuff® is always looking to improve. Part of the business is to offer technical support services to each customer ensuring they feel confident and have a support network behind them allowing them to get the best out of TuffStuff® products.

For more information, see below:
T 01977 680250
orders@tuffwaterproofing.co.uk
www.tuffstuff.co.uk



TUFF STUFF
FLEXIBLE GRP

THE GRP FLAT ROOFING SYSTEM

EXCITING NEW PRODUCT

Providing an exceptional combination of versatility and durability. Quick to lay, with no need to strip or re-deck a roof, this fast-curing system saves time and money.

It's a single-resin solution which can be applied to a multitude of surface types and structures including vertical sections.

With two coats applied within one hour, TuffStuff® Flexible GRP will form a highly flexible, extra tough and seamless waterproof membrane – can be a solution for areas of heavy duty foot traffic.



TUFF STUFF
FLEXIBLE GRP

THE SERIOUSLY MULTI PURPOSE GRP ROOFING SYSTEM

T 01977 680250
orders@tuffwaterproofing.co.uk
www.tuffstuff.co.uk



Protect your investment

TUFF WATERPROOFING'S POLYURETHANE FLAT ROOFING SYSTEM FOR COMMERCIAL MARKET

Tuff Waterproofing, the UK's leading supplier of heavy-duty GRP waterproof flat roofing, has launched a new system offering a combination of fast installation, ease of use and high performance which is ideal for the commercial market.

Tuff Tech Pro VP/UV is a durable, completely seamless waterproof encapsulating membrane which is ideal for new or existing flat roofs, walkways, balconies and gutters. Its advanced fast-curing formulation is quick and easy to apply, significantly reducing time and labour on site. Available with installation training on request, the product is non-hazardous and can be applied in damp atmosphere.

A Tuff Tech Pro VP/UV is a high-build, elastomeric, moisture-triggered polyurethane membrane comprising three layers of advanced polyurethanes incorporating a separate technically advanced reinforcement layer. It can be recoated at any time prior to the end of its maintenance life, thus extending its working life indefinitely. Training is available at your local stockist upon request.



TuffTechPRO
15kg - MEMBRANE

Please visit **www.tuffstuff.co.uk**
T 01977 680250 • orders@tuffwaterproofing.co.uk



TUFF STUFF
THE GRP FLAT ROOFING SYSTEM

RESITRIX

HERTALAN

ALUTRIX


ARBOFLEX

ARBO

Waterproofing solutions for flat roofs, facades and buildings

For trade, sales and distribution enquiries
Call: 01623 627285
Email: info.uk@ccm-europe.com

www.ccm-europe.com



Building News



Gabriels Farm, Marsh Green, Edenbridge, Kent, TN8 5PP



Design your garage on our website to get an instant price



W: crownokbuildings.co.uk
E: info@crownokbuildings.co.uk
T: 01732 866910

Complete compliance solutions

Since 2014, CheckedSafe has provided simple and inexpensive tailored compliance solutions. Established by Gary Hawthorne and Darran Harris, CheckedSafe is a SaaS platform compliance provider providing several apps and a web-based reporting system that is multi-functional and secure.

The CheckedSafe system offers organisations a complete solution, enabling them to manage and protect their workforce and comply with legal compliance requirements whilst reducing cost and liability.

Located in Burnley, its system is global and can be accessed from anywhere as long as you have an internet connection for the management portal, the app itself works off line and on-line so there is no restriction on using the app.

Both Darran and Gary's individual expertise has resulted in CheckedSafe being a nationally recognised company.

CheckedSafe has a range of services from vehicle compliance solutions, compliance and regulations, risk assessment and incident reporting tools

via the App that enables them to offer the client a complete solution.

With much of the industry yet to explore, over five million commercial vehicles in the UK and over 20 million pieces of plant, there is a huge market for CheckedSafe to expand into.

CheckedSafe's web-based reporting system is accredited by DVSA and the FLTA and utilised across all fleet types of HGV, PCV, VAN, plant or utilities. If it needs a checklist, CheckedSafe can digitise and catalogue it, providing you

with a cost-effective compliance solution.

Despite COVID-19, CheckedSafe has managed to outsource all marketing resulting in an increase in in-bound enquiries. Utilising platforms such as Zoom and Teams, less time has been spent travelling and more focus has been on growing the business from home.

For more information, please get in touch:
T 01282 908429
info@checkedsafe.com
www.checkedsafe.com



Software News

Measure PDF and DWG drawings

QuickScale will measure areas, lines, heights, widths etc. easily and quickly.

Print the drawing to scale.

Print the drawing with your measurements in colour

Do you print your drawings to measure them?

Do you use a scale rule?

No annual renewals.

One off payment.

Free updates and support.



20% discount:
Use code SP20

30 day free, no obligation trial on: <https://www.quickscale.co/trial.html>

Visit our website at: <https://www.quickscale.co>

To purchase:
<http://shop.anyscale.co>
See video link here:
<https://youtu.be/S7jlqBOD4Wo>

CheckedSafe

VEHICLE AND ASSET COMPLIANCE Defect Reporting, Compliance Management & Fleet/Asset Maintenance Solution

FLEET MAINTENANCE

- Full PMI Templates
- Service Sheets
- Bespoke PMI & Service Sheets for those who want that bit extra
- Fully DVSA Compliant & Accredited
- Automated Scheduling
- Daily Reports
- Weekly Reports
- Cost Module for fleet running costs
- Digitise your current 3rd party reports & file in the cloud

FIRST & PRE-USE DEFECT CHECKS

DVSA, HSE, FORS, Border Force, Fork Lift Truck, Plant & Machinery

LOLER, PUWER & ADR

Fully customised templates

Data is realtime

You **CANNOT** manipulate data

Full audit trail with user interaction recorded at each stage

Check time/date/location/movement validation

NOW INCLUDES: Lateral Flow Test record template to record & file your COVID19 test. Great for keeping all in one place & you can even schedule the tests through our system

OTHER FEATURES

- Assign checks to staff/vehicle types
- Wildcard Search
- Send group notification
- Send & queue messages
- Reporting Suite
- ANPR or vehicle registration input
- Depot hierarchy structure
- 3rd Party Fleet Management
- Geo Location & Geo Fencing
- Push Documents (put your handbook & other documents on the app for users)
- COVID Focused Templates
- Risk Assessments via the app
- Lone Working

Contact us today for more information or to start a free 30 day trial email: info@checkedsafe.com **TEL: 01282 908 429**

Visual Audio News

melaphone
visual audio

When you need to talk...**Safely**
 100% blocking of viruses and pathogens
 0% transmission of air-flow



Melaphone Speech Unit
 Fully certified to ISO 14644 -1 Class 5

01359 233191
info@melaphone.co.uk
melaphone.co.uk

In use for over 50 years



Measure PDF and DWG drawings

How do you measure your drawings?
 Are they to scale?
 Do you print them to measure them?
 Do you use a scale rule?

QuickScale will measure areas, lines, heights, widths etc easily and quickly.

To start, all you need is one accurate measurement like a door width or parking space.

Take off any measurement or any shaped area by clicking on the points and corners of that measurement or area.

Print to scale on A4 to A1 printers even if the original was created in A0.

Print to scale when the drawing has no scale.

Export dimensions to a spreadsheet and/or print the drawing with the measurements showing in colour.

Faster and more accurate than a scale rule.

We've tried to keep QuickScale easy and simple to use. You don't need hours of training and you don't need extensive pc knowledge.

We are available to help you and answer any questions you have for as long as you need us, at no extra cost.

Licences are purchased outright, there are no annual renewals. Updates are free if you keep your keycode.

30 day free, no obligation trial on <https://www.quickscale.co/trial.html> or see youtube link <https://youtu.be/S7jlqBOD4Wo>

Visit our website at: <https://www.quickscale.co>

To purchase: <http://shop.anyscale.co>

20% discount code for this advert only: SP20



Plants and Sundries to the Trade

Based in Lower Withington, Near Macclesfield only five miles from junction 18 M6, Four Oaks Cash & Carry is now the largest Horticultural 'one stop shop' in the UK!

Since day one, we have attained our impeccable range and service to our customers propelling us far in front of our competitors. The Manager, Marlon Kent, who has over 30 years of plant and tree knowledge, handpicks our stock. Pre-COVID-19 restrictions Marlon would travel to Italy and Spain in the early months of the year, ensuring only the best quality of stock is acquired. This stock would include specimen trees, plants and sundries to the trade. Nowadays, as with most things, this is done via the internet, quality is not compromised as the stock is now 'visually picked.'

Four oaks is a specialist supplier of Mediterranean plants, our stock includes Olives and Palms in pots from 1 litre up to 1,000 litres and these are available all year round. We have an extensive product line of over 1,500 lines of trees and shrubs on display from starter plants to specimen sizes, as well as young bedding and basket plants for which we are historically known.

Catching site of the recent demand for outdoor seating, specifically from the leisure industry, Four Oaks made the recent decision to begin to stock high quality garden furniture, and this decision has been a resounding success through its sales. Furthermore, we have extended our range of pots, which include terracotta, glazed and

authentic wooden half whiskey barrels, just a few of the exciting addition to our ever-growing product line.

We also offers compost and feeds, a wide range of Draper garden tools, hanging basket and liners, pots, bowls and planters, a range of Meadowview stone, sundries pots and bowls, a large range of sundries are available as well as a new range of aggregates being added to the company's Autumn stock. Seasonal specials are common at Four Oaks, alongside its superb selection of planted hanging baskets and patio pots.



and specimens, which can be used for commercial and amenity landscaping. Our Italian plant range has over 70 different varieties enabling customers with a more complete range of choice, combined of small shrubs, large specimens and arches, to the more formal structural specimens.

For more information, please see the details below:
T 01477 571797
www.fouroaks-nurseries.com

Four Oaks stock has one of the widest ranges in the North West for shrub

Woodworking Tools, Machinery & Agricultural News

Salvador Crosscutting Solutions from Daltons Wadkin



Daltons Wadkin offers over a dozen different models of crosscut saw to suit almost any application; from traditional radial arm saws to fully automatic chain loading crosscuts for high volume production. This month, we focus on the Salvador range of products; a comprehensive range of labour saving, cost cutting solutions that are becoming the industry standing for manufacturers of garden furniture, studios, sheds, timber framed buildings, fencing, joinery products, pallets and cases.

SuperUp 500
New for 2021, this semi-automatic crosscut features safe two-handed operator control, a stronger design, retractable front guard for easier loading, and improved accessibility for maintenance and blade changing. Blade capacities of 500, 550 and 600mm are available with increasing cutting capacity. Further customise with a choice of infeed and outfeed roller tables and stop systems.

SuperPush 150
Another new model for 2021, the SuperPush 150 is an evolution in crosscutting, combining the compact form factor of a manual machine with the programmable power of an automatic optimising crosscut saw. Now anyone carrying out crosscutting operations can take advantage of reduced labour costs, reduced waste, increased productivity, and increased accuracy.

SuperPush 200
To fully exploit the advantages of Salvador technology, only a fully automatic saw will do. The SuperPush 200 can increase yield by 15% or more, reduce labour by over 50%, reduce operator skill level, increase productivity, reduce costs and provide a safe working environment. A choice of outfeed systems can further automate the sorting of cut stock and waste offcut removal.

SuperPush 250
Capable of processing up to 130 cubic metres of timber per shift, the SuperPush 250 is a chain fed monster. Up to 7 loading chains allow the machine to be continually fed with individual or stacked work pieces for uninterrupted production. Direct inkjet printing options are available to keep track of finished stock.

SuperAngle 600
Angle cutting offers the largest potential for waste reduction and material optimisation. Capable of straight and angle cutting up to (+/-) 75° the SuperAngle 600 not only optimises the cutting list by length, but also by angle, flipping pieces if necessary, nesting angles to further reduce waste. Chain fed infeed system and independent drilling units are ever popular options.

To see how a Salvador crosscut saw can benefit your business, contact a member of our sales team on: 0115 986 5201, email: info@daltonswadkin.com or visit: <https://www.daltonswadkin.com>

SALVADOR

Automatic crosscut saws

Daltons Wadkin offer a comprehensive range of automatic programmable crosscutting systems for straight and angle work complete with powerful optimisation and defecting software as standard.

production costs reduced by up to **50%**

5-15% less wood used

Visit our Nottingham showroom for a demonstration

DALTONSWADKIN

Sole UK & Ireland Distributors
tel: +44 (0)115 986 5201
www.daltonswadkin.com

Cracking egg processing equipment from 4pe Systems Limited

4pe Systems Limited is an egg handling and processing equipment provider and stockist of Kletec, Nuovo and is an agent for SANOVO and STAALKAT. Based from its location in Shrewsbury, the company provides a wide range of expert services including maintenance, installation and sales throughout the UK and Ireland. 4pe Systems Limited provides a comprehensive service, establishing itself as a one-stop-stop solution for egg processing equipment.

In terms of its range, 4pe Systems Limited provides sales services for egg handling and processing equipment including: egg stamping, packaging, pasteurization, eggshell processing, breaking, loading, Farmpackers, graders and much more. Furthermore, the company can provide equipment for a wide selection of processes and sizes, from small Farmpackers right up to large egg processing systems; 4pe Systems Limited can do it all!

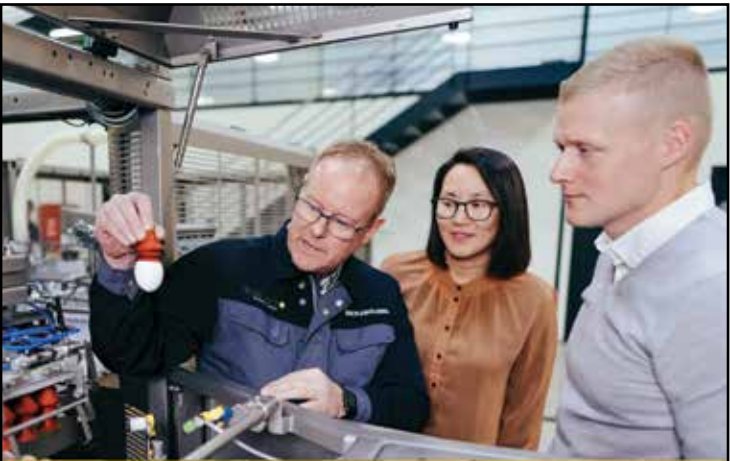
4pe Systems Limited has gained a reputation for quality, which is reflected both in its products and services. Using Dutch innovation and expert engineering, 4pe Systems Limited's range is fully comprehensive, reliable, robust and efficient. Better yet, the company's range is supported by a



friendly and reliable team who is always around and able to pick up the phone, with a positive, helpful reply to assist its customers, whenever they need them.

One of the most noteworthy brands and ranges that 4pe Systems Limited provides is its Nuovo range of printing and stamping machinery. Nuovo egg printing systems manufactures printing systems for marking and coding eggs. Utilising its patented cartridge based ink jet egg printing technology and screen print egg stamping technology, 4pe Systems Limited provide Nuovo's innovative range of egg stamping systems including: stamping on Farmpackers, stand-alone stamping, stamping on grader and manual stamping.

For any more information please see the details below:
T 07801 565860
www.4pe.co.uk



We are ready to assist you

In the food and egg processing industry SANOVO TECHNOLOGY GROUP has gained the reputation of being a manufacturer of machines, equipment and turnkey projects of the highest quality and performance.

We supply a complete range of equipment, knowhow of service for the egg handling and processing industry, solutions for egg inoculation and harvesting for the vaccine industry as well as end-of-line automation and robotics.

As a customer you become part of a dedicated global organisation who will thrive to make your production and business a success.

Tel: 07801 565860
www.4pe.co.uk
www.sanovogroup.com



Concrete Channel with Basalt Fibres: New Era Begins for Hauraton

Hauraton makes concrete material even more efficient for modern drainage technology by enhancing the formulation with natural basalt fibres.

The addition of mineral or textile fibres increases maximum stability, strength, and impact resistance. By amplifying the impact resistance, the more robust and durable the product. This is particularly important for components that are exposed to considerable dynamic stresses, in this case, drainage channels subject to vehicles at high speeds or regularly trafficked by heavy loads.

Basalt fibres: Natural and sustainable
Hauraton's new era in concrete production by utilising basalt fibres has not only created a durable building material, but also one that is 100% natural. The basis of basalt rock is available all over the world in large quantities, which is formed naturally on the earth's surface. By combining basalt fibres with the well-known material concrete, both the structure and the service life of the product is increased.

Mineral mixture: Easy to recycle
Since the end product is a purely mineral mixture, there is no need for material separation during disposal. This protects the environment as it is simply fully-recyclable at the end of the product's life cycle.

Convincing strong properties
Basalt fibres have outstanding properties. They can withstand temperatures of up to 800°C and are highly resistant to alkalis, acids, salts, oxidation and radiation.

The effects of adding basalt fibres to precast concrete elements gives even more of a dimensionally stable, resistant and durable structure. Drainage systems made of basalt-reinforced concrete will assure longer performance.

**FASERFIX CONCRETE:
NATURALLY BETTER**
With the best properties from basalt fibres.



Basalt fibres are versatile and climate-friendly

Basalt fibres are mineral fibres that have a higher melting temperature, better resistance to water, acids and alkalis, and more positive flexural strength. All this makes basalt fibres attractive in drainage technology, but also numerous other applications in construction.

Given the stricter climate targets, the energy consumption during production also clearly speaks in favour of basalt fibres, as basalt it has the lowest CO₂ footprint.

Click here to learn more about FASERFIX linkable to this URL:
https://global.hauraton.com/en/faserfix/?utm_source=bcr_publication&utm_medium=mail&utm_campaign=faserfix_bcr_online

T 01582 501380
<https://www.hauraton.co.uk/gb>

New hydraulic Design Software for HAURATON surface drainage systems

HAURATON's new web-based application 'DesignSoftware' provides construction industry professionals with quick, simple hydraulic analysis, channel sizing, project design and product specification for the company's range of surface drainage systems (for landscape, commercial and civils projects) whilst working on their own desk-top computers, laptops and tablets.

Immediate access for registration and use of this new hydraulic design software is achieved through the link: <https://hydraulicdesign.hauraton.com>

User-friendly and free-of-charge, HAURATON 'DesignSoftware' provides engineers with the flexibility to create their own drainage designs and project specifications, with just three clicks to a hydraulic calculation.

HAURATON has used their 'in-house' hydraulic design software to create project designs for over 30 years with total reliability. In addition to this new software application, HAURATON offers a comprehensive design service, which is also free of charge.

Further information is available at:
www.hauraton.co.uk or by phoning:
01582 501380.

<https://hydraulicdesign.hauraton.com>

HAURATON DesignSoftware – Features & Functions

- User-friendly, intuitive interface with quick, clear, simple steps to final calculations.
- Hydraulic calculations based on widely used 'Modified-Manning-Strickler' formula. Hydraulic discharge provided on a free outflow basis.
- Accommodates HAURATON's core range of linear drainage systems for total design flexibility (for landscape, commercial, civils and other project types). Includes all channel types and depths available.
- Rainfall intensity options in mm/h, l/s*Ha and l/s*m².
- UK Software: UK Rainfall Map using data from 'Flood Studies Report'. User options for Return Period, Storm Duration and Climate Change.
- Automatic and manual channel run design functions.
- Constant-depth and step-fall channel configuration options.
- Accommodates both 0% and positive longitudinal ground slopes.
- Detailed hydraulic analysis of channel run designs.
- Controlled discharge function for HICAP® Slot Channel designs.
- Quick user tools for adding/duplicating runs, resetting designs, adding notes etc.
- 'Drag & Drop' function for adding Point Inflows to the channel run design. • Tributary channels can be linked



- to the main channel run being designed.
- 'Drag & Drop' function for adding system Accessories to the channel run design.
- Comprehensive product library for 'one-stop' specification data. HAURATON website links for additional product information.
- HELP file and tool-tips for detailed design guidance and advice.
- Project folder for registered users offering safe and secure server storage of final designs. Option to export design files for external storage.
- Automatic generation of .pdf project documents for specification support. Hydraulic Analysis, Materials List and Information datasheets available.

Design Reassurance

DesignSoftware has been tested extensively and the methodology validated by an independent hydraulics consultancy company. HAURATON's 'in-house' hydraulic design software has been used successfully by their own technical personnel for over 30 years with total reliability.

Confidential

Registered users (password protected) have access to safe and secure server storage regarding their final designs. Designs remain strictly confidential unless users tick to 'share with HAURATON.'

Registered users have the option to export design files for external storage in their own computers or for sharing with colleagues for further design or discussion. DesignSoftware has been configured to comply fully with GDPR 'data privacy' regulations.

Experience & Expertise

A world leader in the manufacture of modular surface drainage systems, HAURATON drainage products have been supplied onto major projects within the UK and international markets for over sixty-five years. HAURATON developed their first linear drainage system in 1956.

Since that time the HAURATON brand has become known around the world as a benchmark for quality, reliability, durability and service.

Contact
www.drainage-projects.co.uk

H.D. Services Ltd: Sewage Treatment and Water Boreholes

Founded in 1984 H.D. Services Ltd. aim to provide the highest quality percussion drilled boreholes, sewage treatment systems and Open-Loop ground source heat pump installations in the Southeast. Feasibility of any project can generally be confirmed upon receipt of a site postcode.

We offer a one stop shop for self-builders, developers, contractors, consultants and architects, providing waste and drainage solutions, independent water supplies and renewable heating options – all specifically tailored to meet individual needs and suited to the geology of the Southeast.

Sewage Treatment, Boreholes and Soakaways

We have been involved in the design, supply and installation of sewage treatment systems for over 30 years. We can either provide package solutions or we can design bespoke systems to meet individual client needs.

Projects undertaken throughout the southeast range from small solutions for single households to larger scale solutions for estates, business parks, farms, schools, caravan sites, hotels and public houses.

We offer a support service for consent to discharge applications to the Environment Agency – a requirement when installing sewage treatment systems.



All our boreholes are constructed using the cable-tool percussion method - preferred by the Environment Agency (EA) when drilling the chalk aquifer – and are logged with the BGS. Our underpinning ethic is that we want to protect the aquifers from which we make our living.

Ground Source Heat Pumps

We are award winning installers of Open-Loop GSHP installations. These systems utilise ground water as a heat source. Groundwater is pumped from a water supply borehole directly to the heat pump where temperature is extracted. The water is then returned to the aquifer, normally via a buried harvesting tank where it can start to regain this temperature. As ground water is utilised, there is the option of a potable water supply (subject to analysis and suitable filtration) or irrigation.

The heat pumps we install are manufactured



by a British company and are MCS accredited. All our heat pump installations are designed to be Renewable Heat Incentive eligible, for which we provide application support and advice.



We achieved regional success in 2015, 2016, 2017, 2018 and 2019 at industry awards. In 2020 we won the REA Pioneer Awards and this year we have achieved recognition at the East of England Energy Efficiency Awards, winning 2 categories as well as receiving a Special Commendation for one of our renewable heat installations at the 20/21 National energy Efficiency Awards, which were held on the 18th February 2022. Having never entered the national awards before, we are extremely proud to have been recognised for our involvement in this project.

The company is proud to employ land drillers, electricians, plumbers, civil engineers, heat pump engineers, graduates and fellows of the British Geological Survey.

We are members of the WDA, GSHPA, REA, EEA, NaCSBA and are ISO 9001, 14001 and MCS accredited.

For more information, please visit:
www.hdservicesltd.co.uk

With over 30 years experience, we offer bespoke solutions for the domestic market across the South East.
Feasibility of a project can usually be determined with a site postcode.

COVID-19 SAFE WORKING

AWARD WINNING RENEWABLE HEAT INSTALLATIONS
Open-Loop Ground Source Heat Pumps could meet all hot water and heating needs by utilising ground water as a heat source.
Ideal for installation in new or self-builds.

WATER SUPPLY & SOAKAWAY BOREHOLES & DRAINAGE SOLUTIONS
Independent water supply for irrigation or consumption*
Soakaway drainage fields and other drainage solutions
*subject to analysis and suitable filtration

SEWAGE TREATMENT SYSTEMS
We can provide package plant or bespoke systems
All systems are designed to meet the needs of individual clients and comply with strict discharge legislation.
Servicing contracts are offered on all installations.

H.D. services LTD
enquiries@thehdgroup.co.uk | 01494 792000 | www.hdservicesltd.co.uk

A great ConSept from Allerton



Allerton UK is a leading off mains drainage company, covering sales, servicing, commissioning, and repairs of all types of septic tanks, sewage treatment plants, sewage pump stations and soakaways. Working across the East Midlands and beyond, Allerton boasts a team of dedicated and experienced workers, all trained with British Water to ensure they are in the best position to properly assess a situation and correct it.

Established in 1974 by Jon Allerton, the company was originally concerned with draining farmers' fields. However, in the late 1980's, Allerton needed a new direction, and so began its work in off mains drainage.

As well as its sewage treatment plants and sewage pump stations which are made on the premises, Allerton also makes the ConSept. This converts septic tanks into sewage treatment plants, and can be fitted without excavations, apart from the shallow cable and air pipe trenches. This means customers can save around £3,000+VAT by avoiding excavators on site.



The ConSept uses the existing septic tank, removing the need to install a heavy plant or new tank, and it is quick to install to save time, money, and disruption. Moreover, it is manufactured using high grade composite materials and non-ferrous components, meaning the ConSept does not corrode. The equipment also has low maintenance costs, requiring servicing just once a year and desludging and emptying once every two years. Allerton will of course service and maintain all their own equipment, servicing, repairs, and surveys of sewage treatment plants is a major part of their work. The final effluent is discharged into a watercourse or soakaway, and installation and commissioning by Allerton's British Water Accredited engineers is included in the package.

Not only does Allerton install high quality units, the company also focuses on continual service of the equipment. This means that units Allerton has made and installed, of which there are over 1,200, are all still working efficiently across the country.

"In particular, we make sure everything is explained to the customer from the beginning and throughout the process, and we always do what we say we will," said Jon Allerton, Director.



"Minor problems are sorted out by engineers on site, and all the initial customer worries are dealt with in advance. We offer initial onsite advice, help with all paperwork such as planning and Environmental Agency permits, installation and ongoing servicing, including repairs. Every aspect of what we do is to please the customer."



In line with its ongoing expansion, Allerton has been taking on more staff and training them all to British Water standards. "I'm 78 soon, and the company has been

recently restructured and is now Allerton Bradley Ltd. Jason Bradley has been a large shareholder for several years, and has worked for the company for most of his life. His knowledge of all things sewage is vast, and at 36, he ensures the company can look forward to another 50 years of good service, and pleasing people!"

Allerton is continuing to expand, thanks to the real and immediate need of the company's services. Allerton's capabilities are helping people across the country save money, maintain their compliance with regulators, and ultimately protect the environment.

For more information on everything Allerton does, head to the website or get in touch using the contact details below.

T 0800 328 5492
T 01529 305757
www.allertonuk.com



Fasteners & Fixings News

screwSHOP.co.uk
Screws • Fixings • Fasteners



- Screws & Fixings
- Builders Metalwork
- Ironmongery
- Silicones
- Sealants
- Specialist kitting and coating services

"My Dad says his fixings are the best and probably the UK's cheapest"



NEXT DAY DELIVERY
0121 559 8866
sales@screwshop.co.uk

N E Fasteners Ltd
Waterfall Lane
Trading Estate
Cradley Heath B64 6PU



Allerton
SEWAGE & EFFLUENT TREATMENT SYSTEMS

Freephone: 0800 328 5492
Email: sales@allertonuk.com
Website: www.allertonuk.com

The Dependable Choice in Drainage

In rural areas without a mains drainage system, and where septic tanks will no longer reach environmental standards, Allerton can provide the ideal solution. Trading since 1974, Allerton are leading specialists in efficient treatment systems. They pride themselves on their individual, problem solving approach to dealing with alternative means of treating and disposing of raw sewage.

The Allerton ConSept converts your existing Septic Tank or Cesspit into a fully functioning Sewage Treatment Plant.

Servicing & Maintenance on a wide range of Sewage Treatment Plant and Pump Stations by BRITISH WATER ACCREDITED ENGINEERS.

The Diamond Sewage Treatment range is suitable for either individual homes or small population applications

When Gravity Drainage is not possible choose Allerton Pumping Stations for Sewage or Dirty Water



CAMB MACHINE KNIVES

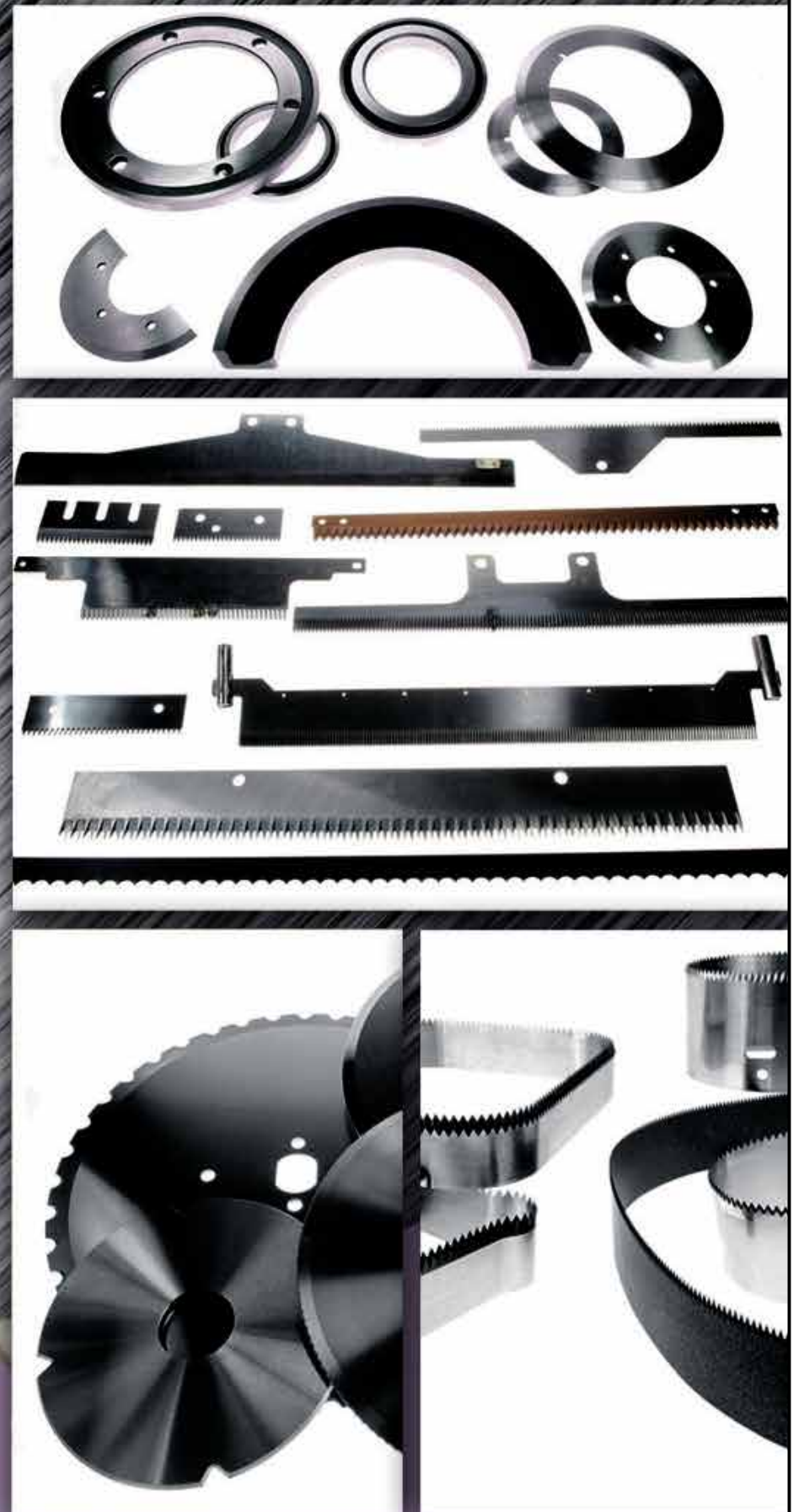
"A Cut Above the Rest"

Our range includes many types of blades, but not limited to:

**ANVIL
BAGGING KNIVES
BOTTOM KNIVES
CARPET KNIVES
CIRCULAR KNIVES
CONFECTIONERY KNIVES
GRANULATOR KNIVES
POULTRY PROCESSING KNIVES
POULTRY UTILITY BLADES
STRAIGHT KNIVES
TOBACCO KNIVES
TOOTHED KNIVES
TOP DISHED KNIVES
TRAY FORM KNIVES
COFFEE GRINDER BLADES
(INSTANT COFFEE)**

We have been supplying our knives worldwide for over 30 years.

We deal with carrier and freight companies so we always remain competitive for price on any destination.



CAMB MACHINE KNIVES INTERNATIONAL LTD

Tel: 01454 322178 | Fax: 01454 321172

Email: sales@camb-knives.co.uk

www.camb-knives.co.uk

MANUFACTURERS AND DISTRIBUTORS OF MACHINE KNIVES TO ALL INDUSTRIES



AmbaFlex launches new slat innovation

Innovation is one of the key values of AmbaFlex. It is in our DNA to design and develop improvements driven by both market-needs and customer-specific requirements.

The latest in line is the development of the AmbaFlex TPO6 slat. This 600mm/24" wide slat with overlapping structure answers several different market-needs in 1 go. It's specifically designed to handle the increased amount of (vulnerable) product variations, expanding the possibilities of our program in all relevant markets. It also answers the ever increasing demands of working safety, especially for the next generation of distribution centres and the increased amount of operators.

Spiral Elevator with TPO6 slat

The slat is made out of an extremely durable synthetic material and can be fitted with our unique full surface friction option during the 2k molding process.

The new AmbaFlex massflow spiral



AmbaFlex is proud to present our latest installation for the elevation of filled glass bottles at the OetTINGER brewery in Mönchengladbach. This is the first of our new vertical mass-flow conveyor system. It is a stainless steel spiral conveyor, fitted the new single track design complete with the recently developed TPJ4 slat.

Project specifics:

- Transportation of 500ml glass bottles
- Over 40,000 bottles-per-hour throughput
- Full stainless steel with corrosion-resistant chain
- A footprint of only 2,240mm
- Single track
- New TPJ 400mm wide slat

While our original SVM is optimised for heavy-duty loads, this new addition to our bottling and canning product line is essentially the lightweight candidate. It is a specially configured spiral elevator for light to regular duty applications.

Including a new and unique single track belt, it can quickly transport a wide variety of liquid containers while maintaining a smooth product journey throughout the machine. It effortlessly handles a wide variety of container types ranging from bottles and cans to jars and tins.

The new single-track design also comes with a new and improved slat, specifically designed for this job. The 400mm wide TPJ interlocking slats ensure a gapless surface and result in a minimum of product movement, keeping them in perfect condition.

This addition to our product range for the bottling and canning market further expands the possibilities for designing efficient and flexible filling lines. All of our machines are customisable with a comprehensive list of industry-relevant options and a small footprint, giving our customers exactly what they need.

Want to know more about our latest addition or other pre-defined machines for crates, cartons, small packs and tray packs? Don't hesitate to contact us through the website at www.AmbaFlex.com. Our specialists will be happy to help and answer any questions you might have.

AmbaFlex is the partner for customized material handling systems based on spiral conveying technology! Our unique SpiralVeyor is used in a wide range of markets and applications for vertical transportation, temporary storage and the accumulation of single goods and packed products.

We are an independent global company that has developed, produces and also maintains the SpiralVeyor system to ensure that our customers receive the most cost effective solutions available today.

Please check this link for the complete video:
<https://youtu.be/3d6Ch5h7S3s>

AmbaFlex, elevating customers to greater heights!

T +31 229 285130
inquiry@ambaflex.com
www.ambaflex.com/en

Together with the unique Triple-E track build-up (awarded with a patent), we offer unparalleled strength and efficiency with our SpiralVeyor solutions. With belt widths of up to 1,200mm (or 48 inches), we are able to transfer virtually any and all products.

This new development will further enhance and complement the many possible applications offered throughout our program.


Interested in the possibilities?

Contact us on:

T +31 229 285130
F +31 229 285131
inquiry@ambaflex.com
www.ambaflex.com/en
https://twitter.com/ambaflex_corp
<https://www.linkedin.com/company/ambaflex>



Freeze Drying Equipment News




LyoStar®4.0


The Latest Innovation in Freeze Drying
Now Available in the UK & Ireland from Biopharma Group

Benefits offered by the new LyoStar®4.0

- DATA RICH ENVIRONMENT**
Ensuring product processing success, even if deviation from 'design space' occurs
- SCALABILITY**
LyoStar 4.0 offers the ability to scale up from R&D to Production scale and back again
- FASTER & MORE EFFICIENT**
SMART Technology & ControLyo reduce processing and reconstitution times significantly
- REDUCED CONTAMINATION RISK**
The non-invasive sensors of LyoFlux TDLAS and wireless probes of TempriS offer a reduced risk of cross-contamination
- ECO-FRIENDLY**
LyoStar 4.0 uses a 'greener' refrigerant gas that has been selected due to its lower global warming potential



Discover more | Contact a Biopharma Group Specialist Today or visit www.biopharma.co.uk



Cleanroom Equipment News

crowthorne

Labcaire and Microflow

UK's largest fully independent supplier of clean air and containment services

- Providing validation, maintenance and spare parts to whole of UK & Europe
- Supporting customers across Asia and Middle East
- Long standing history in clean air Industry
- Trusted service partner of many manufacturers



Contact our experts to discuss your requirements
www.crowthornehitec.co.uk enquiries@chts.co.uk

LAUDA: Experts in Thermal Control and Measurement

LAUDA: Experts in Thermal Control and Measurement Providing Innovative Solutions for Thermal Process Control, Chilled Water Applications, Water Baths, Freezers, Incubators, Shakers, Stills, Tensiometers, Viscometers and Contact Angle Measurement.



composites, automotive, aerospace food & beverage, brewing, digital printing, laser and beyond.

Since 1956, LAUDA has been developing, manufacturing, and supplying reliable precision measuring instruments that have become firmly established worldwide in research, teaching and quality assurance. We are here to assist with your application needs, from measuring instruments for determining the viscosity of polymer solutions, to optical contact angle measuring instruments for measuring the

free surface energy and the wetting behaviour, through to classic tensiometers for determining the surface and interfacial tension of oils and surfactants.

For decades, well-known clients from all over the world have come to rely on LAUDA measuring instruments, which bring together precision, reliability, and longevity, along with extensive experience in sales and service to provide the very best levels of product support.

T +44 (0)1780 243118
info@lauda-technology.co.uk
www.lauda-technology.co.uk

LAUDA continues to provide an expanding range of feature-rich, future proof solutions with energy efficiency and connectivity front of mind, serving a diverse range of industries including chemical, pharmaceutical, biotechnology, oil and gas,

quality assurance. We are here to assist with your application needs, from measuring instruments for determining the viscosity of polymer solutions, to optical contact angle measuring instruments for measuring the

LAUDA

EXPERTS IN PRECISE TEMPERATURE CONTROL
Industrial & Laboratory Solutions



Process Circulators • Chillers • Shakers • Incubators • Freezers
Viscometers • Tensiometers • Stills • Contact Angle Measurement

Please telephone +44 (0)1780 243118
info@lauda-technology.co.uk
www.lauda-technology.co.uk

°FAHRENHEIT. °CELSIUS. °LAUDA.

TEC-RFID



Everything RFID in One Place

We are experts in helping businesses improve efficiency through RFID solutions. RFID, which stands for Radio Frequency Identification, is a technology system that can identify an object using radio waves. At TEC-RFID, we believe RFID will bring big advances to retail, warehousing, manufacturing, construction and more. We make it as simple as possible.

Contact us for more information by emailing
info@tec-rfid.co.uk or visit www.tec-rfid.co.uk

Solutions News

Manage Your Assets with RFID



Major operations involve hundreds or thousands of different assets and it's easy for valuable equipment to be misplaced or lost. Taking inventory of your assets is a time-consuming and sometimes inaccurate process. That's where RFID Asset Management comes in.

With all of your assets monitored by RFID tags and readers, you can know exactly what equipment you have available in real-time. That information helps prevent losses and helps you make informed business decisions. But the benefits don't stop there.

With RFID, you can track not only the location of the asset, but also its condition. RFID tags enable you to instantly see when equipment was last inspected and when it's due another inspection or to be replaced. This reduces downtime because you can repair or replace important equipment at the right time. It also streamlines your maintenance process.

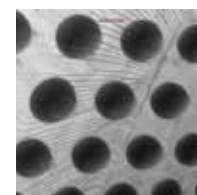
RFID Asset Management is a solid investment for any business that has a lot of valuable assets to track.

TEC-RFID
T 0844 870 7873
info@tec-rfid.co.uk
www.tec-rfid.co.uk

Electronics News

The relative merits of X-ray and CSAM inspection for failure analysis

Modern electronic – and even electrical – subassemblies are complex devices that can fail for many reasons, either during manufacturing or in the field. Some failure modes, such as delamination, voiding or solder bridging, are mechanical, yet they cannot be easily seen as they occur internally.



Accordingly, a non-destructive way of viewing the subassembly's internal construction and components is needed; one that supplies images of sufficient resolution to clearly show where the fault lies.

In fact, two complementary approaches are available: X-ray inspection and Confocal Scanning Acoustic Microscopy or CSAM. Broadly, CSAM reveals air gaps, voids, and delamination in materials that X-Ray cannot see, conversely, voids in a BGA ball would be difficult to visualise with CSAM but easy with X-Ray.

CSAM techniques and systems non-destructively inspect materials layer by layer, delivering accurate and comprehensive results for failure analysis, strength, durability and reliability testing, and other insights.

X-ray and CSAM are somewhat overlapping yet also complementary technologies. One alternative is to use an inspection and test house like Cupio. This will give you access to either technology when you need it, without having to invest in capital equipment.

www.cupioservices.co.uk

Cupio SERVICES

THE PLACE FOR Failure Analysis and In-depth Non-Destructive Inspection

Cupio Services brings knowledge and expertise gained through many years of working with some of the world's best X-Ray, test and AOI systems to our new facility in Chineham Business Park, Basingstoke.

Whether you need to diagnose production or in field failures, validate complex manufacturing procedures or perfect new product introductions, we're here to help.

We have a variety of cutting-edge inspection and test equipment on hand, including functional testers and counterfeit part detection, high resolution x-ray with multiple CT imaging options, and acoustic microscopes for delamination detection within boards or complex devices.

We have the capability to find the smallest defects within your samples and image them with sub-micron resolution. Full failure analysis reports can be provided to help you understand where and how issues are occurring.

Cupio Services Ltd +44 (0) 1256 262800 info@cupioservices.co.uk www.cupioservices.co.uk
Beechwood, Chineham Business Park, Basingstoke, Hampshire, RG24 8WA

Test & Measurement News

SeCorrPhon AC 200: The right all-in-one device for prelocation, pinpointing and correlation

The SeCorrPhon AC 200 combines the characteristics of a correlator with acoustic water leak detection. This makes it an all-in-one device for leak detection, which brings together the three important functions of prelocation, pinpointing and correlation in one single, functional system. Users can react to any location scenario, even in the most challenging of conditions. Switching between the different functions or processes is simple and fast.

The SeCorrPhon AC 200 makes structure-borne and ground-borne noises caused by leaks from water pipes audible to the human ear. The frequency spectrum is traced and made visible on the device, and the current acoustic intensity is shown as both a graph and numeric readout. The user can also see the pre-calculated volume settings and the current frequency analysis of the device on the display at all times.

To then carry out the pinpointing of the leak, the user uses the TS 200 carrying rod and BM 200 (for paved surfaces) or BM 230 (for unpaved surfaces) ground microphone on the section found during the preliminary detection stage. The SeCorrPhon AC 200 transmits the

acoustic signals and shows the intensity as a graph on the screen, pinpointing the leak with sufficient accuracy to allow confident excavation.

The acoustic features of the piezo microphone are outstanding: even the faintest of leaks or leaks occurring in noisy environments can be identified and detected. At the touch of a button, the SeCorrPhon AC 200 will apply tailored filters to the current noises and will automatically

select the appropriate frequency ranges. Filter limits can also be adjusted to accentuate the leak noise and to permit improved comparability between recordings (e.g. for use in databases or teaching/presentation purposes).

The SeCorrPhon AC 200 is ideal for use for leak detection across all sections, materials, diameters and lengths of pipelines. Numerous additional functions are also available for complex location scenarios – whatever your

leak detection requirements, this system will fulfil all of them.

Contact
T 05241 934260
marketing@sewerin.com
www.sewerin.com



Power Generation News

Portable detection, warning and measurement

The portable gas detection and measurement devices in the EX-TEC® PM 5XX series will make the work of gas fitters, maintenance crews and other specialist staff much simpler. They will help pinpoint leaks in freely accessible gas pipelines, estimate the risk of explosion and ascertain whether levels of toxic gases fall within occupational exposure limits (OELs).



Ergonomics that make work easier

All models in the EX-TEC® PM 5XX series are accredited as gas detectors and approved for use in so-called 'Ex' zones. Their high IP65 enclosure rating ensures safe operation even under adverse conditions.

Thanks to their non-slip housing with a rubber lining, the devices are easy to hold. Their high-contrast display is razor-sharp and is easy to read even in sunlight. All of the device's functions can be launched easily from its simple 4-button keypad (two arrow keys, menu key, enter key). The separate on/off button does not have any additional functions.

Just the device for every application

The fully featured version of the EX-TEC® PM 5XX gas detection and measurement device can detect up to five different gases. Thanks to its modular design, the user can tailor the device perfectly according to their needs.

For the construction industry, the EX-TEC® PM 580 displays the carbon monoxide concentration in the ambient air and triggers an acoustic and optical alarm in case of high values. Carbon monoxide is toxic and can be released when combustion devices such as boilers have an insufficient air supply. The gas is poisonous to humans.

Convincing features

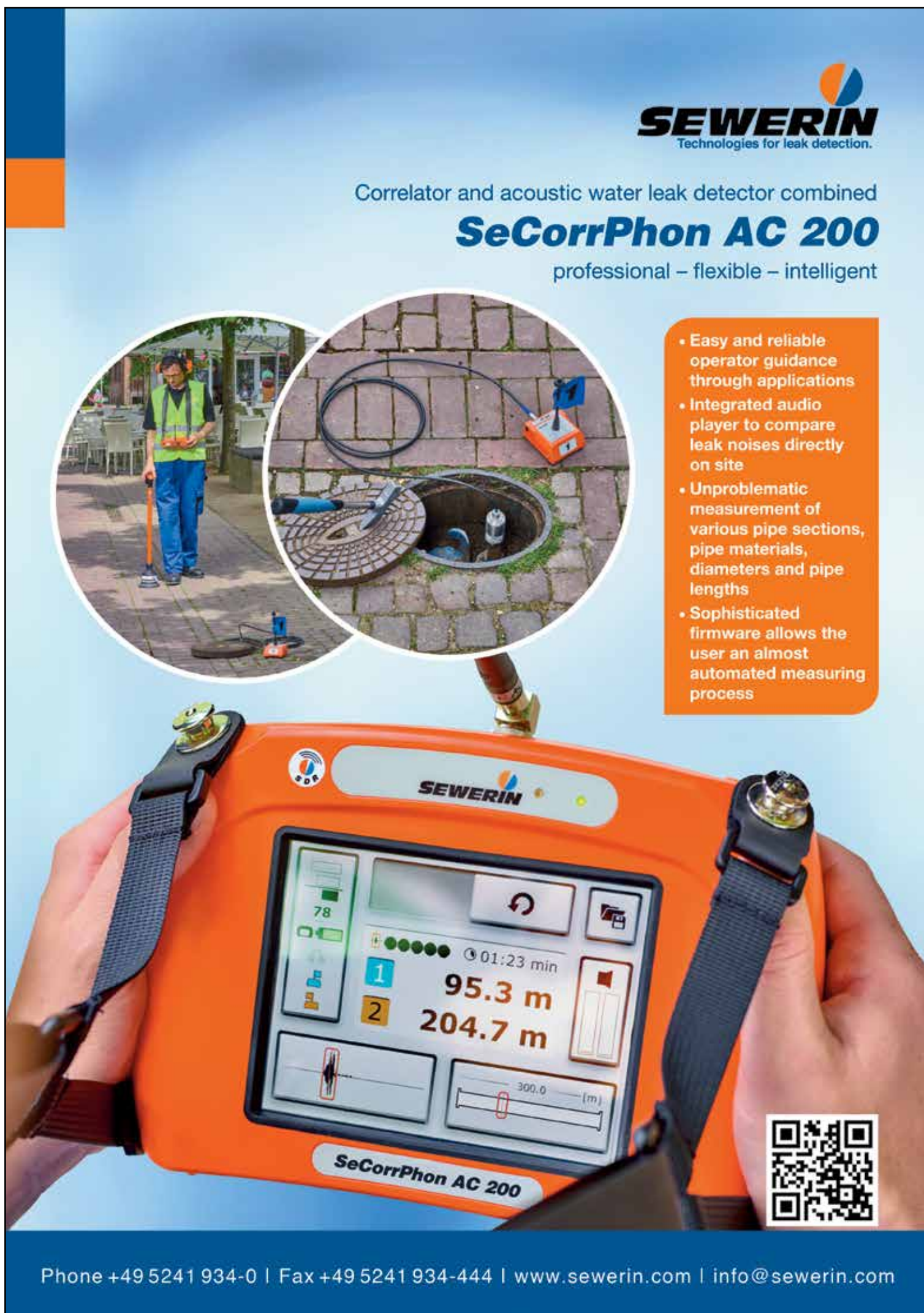
All of the models in the EX-TEC® PM 5XX series are very user-friendly and suitable for any application thanks to their simple 4-button navigation and clear menu structure. Device inspection is supported intelligently by the device software and the illuminated 2.5" display can be read in any environment. The non-slip housing is easy to carry and, thanks to its single-hand operation, can be used by both right-handed and left-handed users. Should the hydrophobic filter come into contact with water, it protects the device and triggers the pump alarm. Filter contamination can be identified quickly and easily on the transparent closure in front of the easy-to-replace dust filter.


A short sensor and belt clip make use of the device even more comfortable, and are included as standard. Other sensors are available for users to customise the device for their exact requirements.


Running on AA batteries or rechargeable batteries, the device operates for a total of between 8–16 hours (depending on model and application).

Test equipment SPE AutoFlow simplifies necessary device inspection and reduces the amount of test gas required. The ATS 503/ATS 501 test station ensures precise measurement values automatically and reliably. Both are available as accessories. Powerful software called GasCom enables storage of the recorded measurement values and is used to configure the entire device.

T 05241 934260
marketing@sewerin.com
www.sewerin.com








SEWERIN
Technologies for leak detection.

Correlator and acoustic water leak detector combined

SeCorrPhon AC 200

professional – flexible – intelligent

- Easy and reliable operator guidance through applications
- Integrated audio player to compare leak noises directly on site
- Unproblematic measurement of various pipe sections, pipe materials, diameters and pipe lengths
- Sophisticated firmware allows the user an almost automated measuring process



Phone +49 5241 934-0 | Fax +49 5241 934-444 | www.sewerin.com | info@sewerin.com

Independent Financial Adviser in Berkshire

Tony Welsh is a self-employed, independent financial adviser who offers advice across the whole of the market. As an independent business, Tony Welsh offers an unbiased approach to personal protection, investments, and mortgages including equity release, pre and post retirement planning, inheritance tax mitigation and care fees planning.

Regulated by the Financial Conduct Authority,

Tony has over 25 years' experience as a financial adviser and boasts extensive knowledge and expertise in the sector. Tony Welsh works with clients from all ages as well as individuals, families, people in employment and retirees.

Tony commented, "One of the ways I grow my business is by referrals. If you



know of anyone who might benefit from my services, please pass on my details or let me have their contact details. I am part of a business network referral group and personally know reliable and trustworthy people that can help you across many fields. I have worked with mortgage brokers, solicitors, will writers, accountants, plumbers, web designers, builders, electricians, heating engineers,

design florists, kitchen refurbishers, domestic and commercial cleaners, odd job men, energy consultants, estate agents, interior designers, and many more. Please don't hesitate to reach out."

Tony Welsh, Financial Adviser,
T 0118 4028978
M 07768 320430
tony@excel121.com
www.tonywelshifa.co.uk

  **Tony Welsh** DipFA, Cert CII (MP and ER)
Excel121 Ltd

INDEPENDENT FINANCIAL ADVISER

Pension Rules since April 2015

It is now possible to take all of your pension as a lump sum, BUT there may be tax implications...

Do you have any existing or neglected pensions?

How much could you take? It is the right thing to do?

Contact me for a **FREE** 1 hour consultation to look at your options.

Tel: 0118 402 8978

Mobile: 07768 320430

Website: www.tonywelshifa.co.uk

Email: tony@excel121.com



Excel121 Ltd is authorised and regulated by the Financial Conduct Authority registration no 440045 Head Office 0203 910 0378

Commercial Finance Solutions

 **Paul Michel**
 FINANCE

www.pmichelfinance.com

Strapped for cash when you want to grow?

We offer Creative Finance Solutions for Growing SMEs in the Midlands



Whether just starting out or well established, businesses use finance for any number of reasons. Cash-flow along the supply chain is a frequent concern. Suppliers, tax liabilities and wages can't wait. Assets and property require funding. An extensive range of financing solutions is available, with access to lenders across the whole of the market.

Services Offered:

- Asset Finance • Business Loans • Bridging Loans & Development Finance
- Buy to Let Mortgages • Commercial Mortgages • Invoice Finance
- Supply Chain & Trade Finance

Contact Paul Michel
T: 07863 753 111
E: info@pmichelfinance.com

Cashflow Solutions from Paul Michel Finance

 **Paul Michel**
 FINANCE

Many companies at some stage find themselves in need of cash – for meeting monthly expenses, payroll, tax liabilities, or new opportunities. It can be a frustrating position, to be awaiting satisfaction of invoices for work already completed as bills pile up or opportunities slip away. Although Government-backed schemes have helped a vast number of companies weather the challenges of the past year, many others have been unable to access funding.



Paul Michel Finance is a partner of Fifo Capital England, providing short-term financing solutions to limited companies in need of cashflow.

The company offers three main funding strategies:

1. **Elective Invoice Discounting:** Paul Michel Finance purchases invoices for work already completed, advancing up to 85% of the invoice value to its clients. When the invoice is satisfied after 30, 60 or 90 days, the company deducts costs and passes on the residual to its clients.
2. **Short-term Business Loans:** Paul Michel Finance provides secured loans to businesses from 3–12 months, or negotiable thereafter.
3. **Trade Finance:** Paul Michel Finance purchases supplies for its clients, secured against verified purchase orders and the resultant invoices.

Solutions can be tailored to clients' needs, incorporating some or all of these strategies.

"I've helped a number of clients that could not secure funding, even from banks they've used for years. Fifo Capital has been established for over 15 years in Australia and New Zealand, and our processes allow for great flexibility."

Clients are grateful for this flexibility. They are not tied in to long-term contracts, only using the company's services when they wish to. Nor is there the need to provide Paul with the whole book of invoices. Moreover, decisions can be made more quickly than many institutions, and this means access to funds much sooner.

There is no typical client for Paul. Some have enjoyed healthy finances, but require flexibility and speed for occasional purchases. Others have struggled to secure finance from more traditional lenders. A number of his clients have sought to grow their business, and others just to refinance.

Short-term finance offers flexibility, discretion and speed for companies in need of funds. As businesses begin the journey of economic recovery after the past year, they might do well to consider short-term funding secured against work already done.

If you're in need of funding, get in touch using the details below:
M 07863 753111
info@pmichelfinance.com
www.pmichelfinance.com

Steel Building News



STEEL BUILDING SOLUTIONS

+ SINGLE SKIN + COMPOSITE + ROLLER DOORS + WINDOWS +



INDUSTRIAL



AGRICULTURAL



DOMESTIC

+ SKYLIGHTS + PERSONNEL DOORS + INSTALLATION OPTIONS +

GET A FREE ON-LINE QUOTE AT

WWW.CSBBUILDINGS.CO.UK

OR CONTACT US ON

01302 301402

INFO@CSBBUILDINGS.CO.UK

Deep-Hole drilling automation is more than part load/unload

Originally published in Modern Machine Shop

Photos: UNISIG



For deep-hole drilling, part handling might be the most visible automation element, but it's not necessarily the most impactful. Often, it's internal process automation that yields the most significant results even with a manually loaded drilling machine.

When it comes to automating deep-hole drilling, there are challenges unique to the process itself. These include fixturing complexities – where maintaining alignment requires elements such as guide bushings and tool supports not present in a conventional lathe or milling machine – and part attributes such as length and weight.

Long parts mean a long drilling cycle time, and maintaining production rates often requires multi-spindle, deep-hole drilling systems. Unfortunately, stopping a two or four-spindle machine means two or four spindles sit idle until the parts are loaded and unloaded. So in these instances, the more parts in the machine at one time, the more automation can actually inhibit cycle time while the machine is running.

Solving this problem in multi-spindle machines requires internal automation to achieve the objectives of lean manufacturing and one-piece flow. In-machine loaders singulate processes so that even within a small four-piece batch you maintain one-piece flow. The operator or automation device puts in a part and takes a part out and the machine does a bit of maneuvering inside to sequence those four parts in such a way as to minimize spindle downtime while maintaining upstream and downstream processes for one-piece flow. For instance, parts could be loaded onto a smart conveyor, indexed, and lifted into chucks for the drilling cycle before robotic unloading on the out-feed side so that there are no bottlenecks to a steady production flow.

Tool life management is another form of internal



automation. Getting feedback to the machine enables the deep-hole drilling process to adapt or halt, if necessary, before tools and parts are damaged.

Tool life management is built into a machine's control, and the machine senses torque thrust and coolant. Chip condition is usually the first indicator of wear, which would otherwise require an operator present to detect, so the machine actually monitors the process and can predict tools starting to wear and identify when they need to be changed. A tool life management system also can count distances drilled and the number of cycles then prompt a tool change at the appropriate time.

That kind of in-machine automation smooths the path for external automation. As the process builds, highly standardized options for robot-ready machines such as an automatic door, workpiece-present sensors and programmable workpiece fixturing makes it easier to add a robot at a later date. These robot-ready

machines also create efficiencies before they are fully automated. Even with manual loading, the automatic doors and programmable clamping make the process more efficient.

In UNISIG's experience, an embedded reamer tool changer enables manufacturers to manage significant throughput increases, even with an operator. With this technology, operators can maintain the pace of production loading the machine, while eliminating the task of inserting reaming tools for each cycle. This allows the operator to redirect efforts towards tasks such as additional quality checks and off-machine setups.

UNISIG is also exhibiting at the AMB show in Stuttgart, Germany 13th-17th September 2022. Further information on all machines of the UNI series and the complete UNISIG machine program is available at: www.unisig.com or follow the company on LinkedIn and Twitter (@UNISIG).



Experts in Stainless Steel fasteners

Precision Technology Supplies (PTS) was established in February 1988. Based in East Grinstead, West Sussex, PTS is a stockist and distributor of Stainless Steel fasteners in both A2 & A4 materials. Offering the widest range of Metric and Unified threaded products available. Quality products with fast delivery times and efficient customer service.

With over 30 years of experience in supplying a growing number of customers, PTS can be counted on to offer delivery to their customers in 90 countries across the world. Within the UK, PTS provide numerous variations of Direct Line Feed management to suit individual needs. PTS can also offer to plate standard and special screws. One of their most popular is the 'Touch-Dry' ChemiBlack process, also

known as Black Oxide. With this method, the finish is so thin that it doesn't affect any dimensional tolerances. In addition to this, PTS also offers finishes in gold, nickel, silver and zinc. In addition, they can offer patch locking, ideal for vibration resistance and added torque performance. There is also the ability to provide screw modifications to fulfil customer requirements.



"We are constantly adding new products to our offering, increasing our current ranges as well as adding new products." We try to offer a one stop shop for all your fastener needs. said Andy.

PTS are regular exhibitors at the bi-annual Fastener Fair in Stuttgart, which was unfortunately postponed this year. If you would like to find out more information on their full range of products and services, head to their website or use the contact details below.

Contact
T 01342 410758
info@pts-uk.com
www.pts-uk.com



PRECISION TECHNOLOGY SUPPLIES
Stainless Steel Industrial Fastenings & Precision Turned Parts

STAINLESS STEEL METRIC FASTENERS



Purchase fasteners, nuts, bolts, screws and more online at PTS – one of the leading global suppliers of industrial stainless steel products.

- Stock range from M1.0 to M36
- A2 and A4 materials available
- Large stocks, fast delivery



Please visit to find out more: www.pts-uk.com
Telephone: +44 (0)1342 410758 | Email: info@pts-uk.com



screwSHOP.co.uk
Screws • Fixings • Fasteners



- Screws & Fixings
- Builders Metalwork
- Ironmongery
- Silicones
- Sealants
- Specialist kitting and coating services




"My Dad says his fixings are the best and probably the UK's cheapest"



NEXT DAY DELIVERY
0121 559 8866
sales@screwshop.co.uk

NE Fasteners Ltd
Waterfall Lane
Trading Estate
Cradley Heath B64 6PU

The UK's number one service solutions provider

Service Sealing Solutions Ltd provide a number of different service solutions across the UK to both the public and private sectors. As the sole UK distributor for the sealing industry's top manufacturers; DOYMA, FRANK and HKD, Service Sealing Solutions Ltd offers the UK the most extensive range of products that are German manufactured and far outweigh that of any competitor.



Service Sealing Solutions Ltd specialises in high-quality service duct sealing systems for utility services and watertight seals. The company's ever growing market range can benefit from its broad scope of innovative sealing solutions alongside receiving the highest level of expertise.

In 2018, DOYMA granted Service Sealing Solutions Ltd the exclusive rights to distribute their products in the UK. DOYMA provide the very best in German engineering and is used to seal penetration points in walls and floors to permanently prevent any infiltration of gases and water into the building. All DOYMA products are designed to solve all watertight duct sealing requirements and prevent against structural damage. Suitable mostly for builders of commercial properties, Service Sealing Solutions Ltd has supplied DOYMA products to some of the UK's largest projects such as HS2 and Kings Cross in London. DOYMA has recently released its new generation Curaflex Nova® gaskets which are the perfect solution for any professional tradesman instantly looking to solve sealing problems and can be adapted to multiple applications.

T 01952 510050
www.servicesealingsolutions.co.uk

Safer, cost-effective drive system for sectional overhead doors

Campisa is an Italian company specialising in the manufacture, supply and installation of loading bay equipment. Its UK division was



opened in January 2019 and is already well on its way to becoming the fifth major supplier of loading bay equipment in the country.

One of Campisa's unique offerings is its Fidelity® drive system, featuring special hydraulic motorisation combined with a console for the management of sectional doors and loading ramps.

This ground-breaking technology eradicates the need for conventional drive systems for sectional overhead doors, which always include counterbalance springs, spring-shafts, cable drums and/or curly cables. Tensioning counterbalance springs presents a dangerous operation when either setting up from new or when carrying out routine maintenance. What's more, cable drums create issues whereby cables get entangled on the spring-shaft. Both of these operations are inherently dangerous and require working at height.

Campisa's Fidelity® drive system does not have springs or cable drums, eliminating the dangerous set-up or maintenance aspects related to sectional overhead doors. What's more, the Fidelity® system can be used to operate both a sectional door and a dock leveller, abolishing the necessity of working under the dock leveller and removing the risk of working outside under a leveller in a busy truck environment.

For more information on everything Campisa offers, head to the website or get in touch using the details below.

Contact
T +44 (0)1536 851785
info@campisa.co.uk
www.campisa.co.uk



Service Sealing Solutions Ltd

Tel 01952 510050
sales@servicesealingsolutions.co.uk
www.servicesealingsolutions.co.uk

Service Sealing Solutions are the sole UK distributor for pioneering the sealing industry's top manufacturers; DOYMA, FRANK and HKD.

Service Sealing Solutions are the sole UK distributor. Wherever services are installed through walls, ceilings or floors, penetrating water may cause damage to buildings. Lack of attention to the points of entry of pipes and cables into the building can have serious results: damp cellars, equipment damaged by water ingress and high repair costs.

Service sealing systems ensure professional and perfect pipe sealing, thus presenting excellent preventative measures against structural damage.

The very best in German engineering is used to seal penetration points at the wall to permanently prevent any infiltration of gases and water into the building, and the duct sealing systems are guaranteed for 25 years.





CAMPISA
UNITED KINGDOM





FIDELITY

Simple Box

Low Operational Cost

Low Maintenance

CAMPISA UK Ltd
Ph. +44 (0)1403 741 935
www.campisa.co.uk
info@campisa.co.uk

QUALITY HINGES FOR OVER 200 YEARS

Gold & Wassall have been manufacturing hinges for over two centuries, so it's safe to say we know what we're doing. Our team of experts can design and manufacture almost any hinge, for any application. We have made upwards of 250,000 unique hinge designs, with more designs being drawn up each day.

SEE MORE AT GOLDWASSALLHINGES.CO.UK/BESPOKE



BESPOKE HINGES



GOLD & WASSALL

EST. 1790

01827 63391 - SALES@GOLDWASSALLHINGES.CO.UK -  [@GWHINGES](https://twitter.com/GWHINGES)



Pickering's Parks

Chilton Park

A new residential Park Home development in the West Country for the semi-retired and retired.



An Ideal Location for Fishing, Golf, Walking and countless Leisure Activities.

Only a short journey to Bridgewater Splendid High Street Shopping Facilities.

Chilton Park is situated in a secure and convenient location that is never more than a short distance away from the diverse pleasures of the west country and surrounding country's abundant riches of leisure and social pursuits.

Chilton Park, Chilton Trinity, Bridgewater Somerset, TA6 3JW

Tel: 01278 426005 | Mobile: 07858 404593

Email: sales@chiltonpark.co.uk | Web: www.chiltonpark.co.uk