

# BUILDING UPDATE

ISSUE: 653 February/March | [www.solutionspublishing.co.uk](http://www.solutionspublishing.co.uk)



## KELLY TANKS

### Dealing with waste water onsite?

We provide **CONCRETE WASHOUT AND WATER TREATMENT SOLUTIONS** so that you can easily re-use or safely discharge your onsite wastewater



- ✓ SETTLE & RETAIN SOLIDS
- ✓ FLOCCULATION & LAMELLA
- ✓ NEUTRALISE & CONTROL PH
- ✓ REMOTELY MONITOR PH & TSS

SYSTEMS AVAILABLE FROM £45 P/WK



**BULK SAVINGS  
AVAILABLE ON  
ADSORPTION SACKS  
IDEAL FOR CONCRETE  
WASH WATER**

[www.kellytanks.co.uk](http://www.kellytanks.co.uk) | [info@kellytanks.co.uk](mailto:info@kellytanks.co.uk)

**01889 508944**



## E-learning for the construction industry



Over the past 12 months, online learning and training have become increasingly more popular as individuals and businesses seek ways to upskill, develop or specialise in key subjects for self-improvement.

The four-stage training and qualifications scheme Concrete Technology & Construction leads to qualifications for the construction industry awarded by the Institute of Concrete Technology (ICT). The training courses range from foundation level through to advanced, and TALENT Concrete Training Ltd., established in 2004, currently provide online distance-learning courses in Stages 2 and 3.

The industry-endorsed four-stage qualification framework is directly linked to the professional grades of membership of the ICT, formerly administered by City & Guilds of London Institute (CGLI).

The course outlines are as follows:

- Stage 1:** Concrete Practice, ideal for those starting in the construction industry. Candidates who complete this course successfully are eligible for memberships of the ICT at Technician grade and to use the designatory letters TechICT after their name.
- Stage 2:** General Principles, intended for those involved in the production, use or quality control of concrete. Candidates who complete this course successfully are eligible for memberships of the ICT at Affiliate grade and to use the designatory letters AffICT after their name.
- Stage 3:** Practical Applications, intended for those involved at a supervisory level in the production, use or quality control activities associated with concrete. Candidates who complete this course successfully are eligible for memberships of the ICT at Associate grade and to use the designatory letters AMICT after their name.
- Stage 4:** Advanced Concrete Technology, this stage leads to the highest award in concrete technology. Candidates who complete this course successfully are eligible for full corporate memberships of the ICT and to use the designatory letters MICT after their name.

Tony Binns, a Director of TALENT, and an honorary Fellow of the ICT

commented, "TALENT courses enable participants to enrol and commence their studies at any time, with no dependence on the academic year. We have three fully qualified tutors who are constantly available for assistance, mentoring and discussion."

Stages 2 and 3 of the Concrete Technology & Construction training and qualifications programme are presented by TALENT as online distance learning courses. The course content has been written and designed by John Newman, Peter Domone and Tony Binns. Each tutor is successful in their own field and holds vast amounts of experience and expertise in concrete technology, as well as proven, successful techniques and skills acquired to mentor and teach.

"TALENT courses are well-established and recognised by the ICT. Revised and newly introduced ICT learning objectives are incorporated in the course material. In the future, we intend to introduce the foundation level – Stage 1: Concrete Practice, as an online course using the same successful online training methods as we have in Stages 2 and 3. The course material is updated to reflect developments in techniques and changes in British and European Standards and remains accessible to participants long after they have completed the course, serving as an up-to-date reference source," stated Tony.

The courses available are ideal for all producers of precast and ready-mixed concrete, test consultants, civil engineers and building contractors. TALENT training courses fully prepare participants for ICT examinations and have achieved a successful high pass rate, including a high proportion of Credits and Distinctions upon completion.

COVID-19 has had minimal effects on business for TALENT, and the concept of being entirely online has reaped tremendous benefits for the company. "Being entirely online involving no physical personal contact, TALENT courses have enabled those who seek training and qualifications to enrol and progress without any adverse effects from COVID-19," said Tony.

Enrol today to receive in-depth and up-to-date information on constituent materials, specification, concrete properties, production and performance.

**For more information, see below:  
T 01723 567432  
[info@talentconcretetraining.org.uk](mailto:info@talentconcretetraining.org.uk)  
[www.talentconcretetraining.org.uk](http://www.talentconcretetraining.org.uk)**



**Castle Steel Buildings**  
see them on.....X



**Demon Designs**  
see them on.....IV



**Bulmer Brick & Tile Co**  
see them on.....XI



**Hauraton**  
see them on.....XV



**Allerton**  
see them on.....XVI



## Lightning & Protection News

# Stay safe with lightning protection

South West Lightning Protection provides a number of services throughout the UK including lightning protection, early streamer emission systems, upgrades of older systems, earthing services and design, safety line testing and inspection of horizontal safety line systems and PPE.

Established in 2014, South West Lightning Protection was created by Gary Libby who has over 40 years' experience in the industry. Located in Plymouth, the company also has an office in Scotland. "Our core service is lightning protection installations and testing; we also design new systems. As we are a small company in comparison to our competition, we strive to provide a personal service to our clients," stated Gary.

In recent news, South West Lightning Protection has commenced testing of roof mounted horizontal cable based mansafe systems, permanent ladders, guard rails, and safety anchors. These services are provided individually from the company's lightning protection services, and to save the client money, can be combined.

South West Lightning Protection work throughout the UK to assist its clients with their project requirements regardless of their location. Within its lightning protection service, South West Lightning Protection is able to offer a full installation and testing service, including



BSEN62305 systems, BS6651 upgrades, NFC 17 102 early streamer emission systems and BS7430 earthing systems.

Some recent projects have included chimney upgrade works in Cumbria, new air termination networks in London and a new roof tape system in Plymouth. South West Lightning Protection record all test conditions and results, and a reminder is sent out before the next test is due.

The system South West Lightning Protection use provides an alternative solution to protecting structures where the installation of a British system is not a feasible or a viable option. Some benefits of its early streamer emission device include a more

aesthetically pleasing device as the system only requires two down conductors and earth terminations to provide a path to earth. It is cheap to install and maintain, and as the number of roof conductors, down conductors and earth terminations are reduced, the system has a lower carbon footprint.

Its clients include electrical contractors, ministry of defence, NHS, companies in the sectors of water, commercial, telecoms and facilities management, as well as individuals. The company holds a health and safety accreditation by SafeContractor which audits the company training and safe systems of work. All company engineers are CITB card holders for the work they undertake, and DBS checked.

**T 07807 334441**  
**south@lightningconductor.org**  
**north@lightningconductor.org**  
**www.lightningconductor.org**

## Fire Safety News

# Your partner in fire safety



DB Fire Safety Limited is situated in Peterborough, and was set up in 2013 by its Managing Director, David Black. David is a qualified fire risk assessor with over 30 years' experience working in the fire safety industry, with accreditation including from the Institute of Fire Safety Managers, 'Register of Competent Fire Risk Assessors.'

David first launched DB Fire Safety Limited after gaining experience working for two years as an independent fire safety consultant. Recognising the need for his services, David launched DB Fire Safety Limited to provide independent fire safety consultancy, serving clients throughout the UK.

"We are an independent fire safety consultancy specialising in carrying out fire risk assessments," said David Black, Managing Director.

DB Fire Safety Limited's main operations consist of carrying out fire risk assessments and providing fire strategy documents for new buildings under construction.

"In addition to offices and factories, we specialise in carrying out fire risk assessments of schools, residential care premises, and blocks of flats. We also assist building contractors and architects in developing fire & evacuation strategies for buildings under construction or renovation," added David.

Through the company's expertise, DB Fire Safety Limited understands the difficulties in navigating fire safety legislation, and as such, the company prides itself on being 'your partner for fire safety.'

Under David's leadership and industry leading expertise in the fire safety industry, the company is well equipped to assist its clients and help to provide their client's businesses with a comprehensive document to identify potential sources of ignition, the likelihood of a fire occurring and the potential impact that a fire would have on its occupants. An assessment is then made of the documented procedures that outline actions that need to be followed in the event of any fire incident, and the required level of training and practice needed.

One of the main advantages of using DB Fire Safety Limited's services is its honest and efficient service, as an independent business without any conflicting interests.

David explained, "The benefit of employing ourselves is that we have no potential conflicts of interest in supplying or maintaining fire extinguishers, fire alarm systems, or installing fire doors etc."

The company also provides in-house training for Fire Wardens and Fire Marshals, as well as online courses, to keep staff and businesses compliant and safe. In addition, DB Fire Safety Limited also provides training courses for general fire safety awareness, which can be carried at the client's premises or via its online E-Learning modular courses. The online courses are a great resource for refresher training.

As the company looks to its future, DB Fire Safety Limited maintains its overall goal of continuing to provide its clients with the best support possible. David added, "We want to ensure their premises are safe, and that business owners and managers meet their responsibilities under fire safety legislation."

**For further information,**  
**please see the details below:**  
**T 0800 7720559**  
**www.dbfiresafety.co.uk**



## DB FIRE SAFETY

Your Partner for Fire Safety

Member of  
The UK Fire Association

IFSM  
Institute of Fire Safety Managers  
2022

FPA  
Fire Protection Association  
FPA Member

**0800 772 0559**  
**enquiries@dbfiresafety.co.uk**

**Fire Risk Assessments**  
**Fire Awareness Training**  
**Fire Warden Training**  
**E-Learning Courses**  
**www.dbfiresafety.co.uk**

Unit 1, Wittering Service Station  
Townsend Road  
Wittering  
Peterborough  
PE8 6AB



Formed in 2014 and having over 40 years of expertise in the lightning protection industry, South West Lightning Protection, provides a full range of services from our office locations, in the UK. With our trained operatives, we are able to provide a full range of services from conception to completion and with out Safecontractor accreditation you can be assured works will be carried out adhering to all relevant health and safety requirements.

**Whatever your requirements, we are always pleased to help**

**South West Lightning Protection, provides a full range of services including:**

- Lightning protection, (BSEN62305 Lightning Protection systems)
- Early Streamer Emission Systems (NFC 17-102)
- Upgrades of Older systems.
- Earthing services and design.
- Safety Line Testing
- Inspection of Horizontal safety line systems and PPE

**Our qualified Engineers carry out inspections & installations throughout the UK.**

Airport Business Centre, Estover, Plymouth PL6 7PP  
Also located in Scotland and London

**Visit [www.lightningconductor.org](http://www.lightningconductor.org)**  
**Telephone: 07807 334441**  
**Email: [north@lightningconductor.org](mailto:north@lightningconductor.org)**  
**or [south@lightningconductor.org](mailto:south@lightningconductor.org)**



## Lighting & Electrical News

## Feeder Pillars for every purpose from Fisher & Company...



**Traditional Range**  
**3 & 5mm Heavy Duty - FFP Range**  
**Standard BD Range**  
**Mini Pillar SDMP Range**  
**316 or 304 grade - Stainless Steel**  
**BD Range**  
**GRP Range inc. Bespoke**

Traditional

GRP

5FFP2000

**Prewired - Bespoke**  
**Choice of locking**  
**Powder Coat Finishes**  
**Large or small orders All metal Feeder Pillars**  
**are made on the premises**  
**Fast turnaround**  
**High quality build & finish**  
**inc EV Charging**



Hospital MRI Supply Pillar



Glazed Doors



Event Power supply



63A Service Pillar



Mini Pillar

We have continued to manufacture and supply throughout the COVID-19 pandemic. Whilst we do experience some supply chain issues they are mostly improving and our delivery times are still from next day for stock and from 2-3 weeks for made to order. We continue to monitor the situation and adjust working practices for the safety of our staff and to achieve the delivery you need. Call or email our friendly Sales Team for a Quote or more information.

**FISHER & COMPANY**

**Tel: (+44) 0333 666 2122**  
**www.fisherandcompany.co.uk**  
**info@fisherandcompany.co.uk**



Proudly made in Britain



# 30 years of joinery excellence – Happy Birthday to us!

**B**luerun Ltd is dedicated to manufacturing top quality, bespoke custom-made joinery for the domestic and commercial markets. All of our joinery is manufactured on premises using hardwood, softwood or sheet materials. As well as offering finished goods sprayed to a primed or painted finish, Bluerun Ltd also offer other treatments and installation services for some products.

Bluerun Ltd is a family run business and was established in October 1991 by its current Managing Director, John Jones. Based in Wimbish, just outside Saffron Walden in Essex, its factory covers 7,000 sq. ft.<sup>2</sup>, and can manufacture in hard or softwoods, and veneered and painted panels. Its modern spray paint and lacquer facility enables products to leave the factory in a fully finished state. The ethos surrounding the company boasts comradery, team work



and dedication to the customer. Here at Bluerun Ltd we promote quality, family and pride in all that we do. The bespoke items manufactured in our workshops are made to a high standard thanks to the joiners who make them. The whole team take pride in their work.

A proud moment, in 2019, John Jones' daughter was the most recent addition to the board. From humble beginnings, the company has gained remarkable growth within the building trade and is well known for its top-quality joinery. Our bench joinery team is small and has extremely high standards. Whilst we use power tools and machinery, there is no CNC or computer aided design, or drawings used. We pride ourselves on being 'old school,' and still use hand tools to finish off many of our bespoke items. Everything is designed in-house, that is if no drawings are supplied by the clients.

For the commercial industry, the majority of its production is for commercial builders and manufacturing. Bluerun provides all type of commercial joinery products from large-scale repeat production runs of windows, frames, and doors, to both large and small-scale customers for internal and external projects. We also produce

high quality joinery to meet the exacting standards of conservation areas or heritage sites.

We also provide domestic bespoke joinery from custom door replacements to bespoke furniture. Our portfolio includes decking, balcony balustrading, and gazebos as well as replacement stairs, banisters, mouldings or bespoke cabinets and bookcases for interiors. Bluerun Ltd has even designed and produced a custom-made Wendy house for a private client. Whatever your joinery needs, Bluerun Ltd can provide exactly what you're looking for.

October 1991 marks the company's 30th anniversary of incorporation – what a tremendous achievement made by all. We are all extremely proud. The company couldn't have made it this far without our joinery team and our loyal clients we have worked with over this time. Some employees have worked with John since the 1970s, at a previous company, and we believe that we have a great and loyal team.

**T 01799 599995**  
**dee@bluerunltd.co.uk**  
**www.bluerunltd.co.uk**



## The South West's Number One Timber Building Company – MAC Cabins



**M**AC Cabins Limited is a fast-growing Timber Building company based in Okehampton, Devon, with over 30 years' experience in the construction industry. Proud to be the providers of one of the largest selections of; Timber Buildings, Log Cabins, Leisure/Holiday Cabins & Glamping Pods, in the heart of the South West of England.

To compliment the extensive ranges of timber buildings, MAC Cabins also offers a vast variety of other Timber Frame & Modular Frame options, providing one of the widest selections of timber building options, within the market-sector.



For all timber frame styles, MAC Cabins works with self-build and custom-build projects, where the initial design has already been completed with architects. We help to guide small to medium-sized developers, on sites of 1-30 plots, to identify the best way to convert vision into reality.

MAC Cabins continues to expand its vast portfolio of designs and build options, allowing you to select the perfect combination of style, size and price, confident you will find the perfect selection to meet your growing demands.

With every building, you will receive a structure that has a higher standard specification than most other comparable products.

**Contact**  
**T 0800 999 1564**  
**help@maccabins.co.uk**  
**www.maccabins.co.uk**



### QUALITY, CUSTOM MADE JOINERY



**Bluerun Ltd have been manufacturing top quality, purpose made joinery for the domestic and commercial markets for over 30 years.**

**Contact us to discuss your requirements.**



Please visit our website: **www.bluerunltd.co.uk**  
Tel: **01799 599995** | Email: **dee@bluerunltd.co.uk**  
**f bluerunltd @ bluerun\_joinery**

MAC Cabins Classic Post & Beam Garages & Car Ports, available in Oak or Douglas Fir, with or without accommodation above

For Timber Frame Options, MAC Cabins work with Self Builders and Developer/Builders with their custom design projects, to identify the best way to convert vision into reality.

MAC Cabins Pullman Glamping Pod Available now for immediate delivery. An example of our Glamping Pods & Timber Buildings available for the holiday and leisure industry.

Annexe Buildings  
Garden Rooms  
Garages & Car Ports  
Home Offices  
Glamping Pods  
Post & Beam Buildings  
Log Cabins  
Timber Lodges  
Timber Frame

Finance available with Approved Finance, on all our buildings and timber products. Finance subject to status.

UNIT 4, CRANMERE ROAD, EXETER ROAD INDUSTRIAL ESTATE, OKEHAMPTON, EX20 1UE **0800 999 1564** **WWW.MACCABINS.CO.UK**



# Demon Designs: Experts in glass

**B**uilding Update is always looking to showcase companies who are offering only the highest quality services, delivering an exceptional customer experience throughout the entire working relationship.

Established in 2011 by Dominic Meakins, Demon Designs specialises in bespoke solutions for glass structures, offering consultancy, design and build services to exceed its clients' requirements every time. Fuelled by a commitment to excellence, the team at Demon Designs always goes the extra mile to ensure complete customer satisfaction, no matter what the project size.

"We pretty much provide everything glass related," Dominic explained. "A big seller last year was the switchable glass panels that turn from opaque to clear using a remote control or light switch. We can put this in almost any glass installation, from wall panels to windows – we have used it on glass floors and even to create a two-way mirror."

One of Demon Designs' key advantages is its comprehensive service, offering everything the customer might need for their project. "Many of our customers want the hassle removed. For example, if they want a walk-on glass floor installed, they don't want to get a builder in to cut the hole, a plasterer to make good and a decorator to finish it off. We can do the lot, including engineers' calculations." Indeed, with the ability to provide a one-stop-shop for all project requirements, Demon Designs is the number one choice, no matter how complex the design.

Recently, Demon Designs joined Check-a-trade, with a view to obtaining more domestic customers in preparation for the uncertainty of the current commercial market. "This has had some success, but we still find that the vast majority of our customers are either returning customers or new customers by recommendation, and you can't really get a better endorsement than that!"

Indeed, as well as a loyal customer base, this commitment to customer satisfaction has resulted in impressive successes for Demon Designs over the past eight years, and this year has been no different. "It's been an interesting year for us," Dominic told us. "We have seen a shift in the type of projects we win, moving away from large commercial fit-out projects towards domestic 'Grand Designs' type projects and installations.

"In the past year we have designed and installed two glass stages, which were very

interesting projects and highly pressured with regard to time and expectation. We were also very lucky to have been awarded the contract to install all the glass for the hospitality areas at Tottenham Hotspur football club, as well as fit out several of the NFL areas."

In the coming years, Demon Designs is looking to complete more complex projects, to help the company grow even further and build upon its achievements since its inception eight

years ago. "We want to take on more bespoke projects, big or small. I personally believe that you can only improve by pushing your boundaries, and this is true for business also. We are constantly taking on more challenging projects, often from other companies who don't want the risk. The great thing about this is that we often work for companies that would be considered competitors in other fields."

Indeed, Demon Designs' future ventures are

highly anticipated as it continually develops and improves upon its capabilities. The company is always interested in taking on new customers, either commercial or domestic, so get in touch using the details below or head to the website if you wish to discuss your ideas.

**Contact**  
**T 01903 733206**  
**info@demon-designs.co.uk**  
**www.archglass.co.uk**



## Structural and Architectural Glass

Demon Designs offer a comprehensive range of products and services to a wide variety of construction sectors. From design and consultancy work to full design and build, we can provide a custom made service to meet your requirements.

Specialising in unique glass and metal structures, we can supply and install totally bespoke solutions or standard off-the-shelf products.

- CAD Design Services
- Toughened Glass
- Laminated Glass
- Glass Worktops & Coloured Splashbacks
- Balustrades
- Juliette Balconies
- Bespoke Shower Screens
- Sliding Glass Doors
- Flush Glazed Doors

Please contact us on:  
**01903 733206**

Email: [info@demon-designs.co.uk](mailto:info@demon-designs.co.uk)  
[www.demon-designs.co.uk](http://www.demon-designs.co.uk)





# Door scheduling made easy, fast and error free

Established in 2002 by Derek Brown, RapidSpec is the first software developed for automatically creating door schedules, drawings, project estimates and bills of materials. Designed to eliminate errors in door set specification and the production of door schedules, RapidSpec is an industry leading software product proven to find any doorset's details from any customer and any project within 15 seconds.

"As software specialists for manufacturing processes, we have produced a software system for fire door



manufacturing that not only improves productivity, ensures a faster turnaround and is proven to eliminate a greater number of errors, but also results in lower admin costs whilst producing a higher return on investment than other software systems on the market," stated Carol Cole, Business Consultant.

With RapidSpec everything is instant. Long gone are the days of spreadsheets, RapidSpec offers instant quotations that include all of the auto generated doorset drawings required. Simple to navigate, the operator uses multiple

choice, yes and no questions together with the required dimensions and RapidSpec does the rest. The process is time efficient, cost effective and simple to use.

Manual data entry falls victim to human input error, which is both time consuming and frustrating for the employer and the employee. It not only impairs performance and efficiency but can result in higher operating costs and fluctuating levels of performance and continuity. With this in mind, RapidSpec offers two services: Fire Door Scheduling and Door Manufacturing Software.



Robin Bell, Sales Manager at Rapid Spec

Door Manufacturing Software allows manufacturers to produce detailed door schedules much more efficiently than traditional spreadsheets, calculators and catalogues. RapidSpec uses the existing skills of your estimator who will be able to create professional quotations immediately with just one hour of training. The orderly input of data ensures that nothing is left out and everything is checked. From the data input RapidSpec then automatically creates a scaled, detailed, and dimensioned doorset drawing.

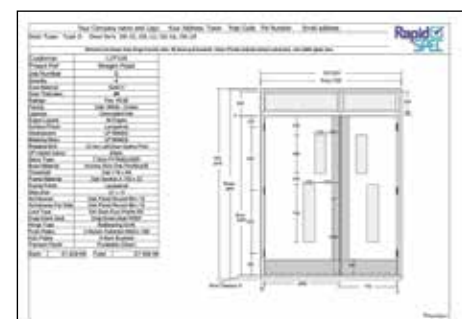
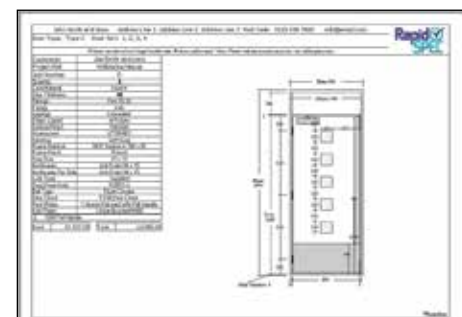
Ideal for manufacturers and fabricators of custom, standard interior and exterior doorsets, as well as architects, contractors and fire door manufacturers. "We have now introduced a barcode functionality and we are constantly updating and improving the software to create greater efficiencies for our clients," said Carol.



It is vital fire doors are designed and manufactured to the right specifications to ensure they have the correct level of fire resistance. Fire Door Schedule is a door specifying and scheduling software from RapidSpec that allows door manufacturers and designers to quickly and simply create accurate fire door schedules from standard specification sheets. The simple process is designed so that the operator only needs to answer a few questions and input the dimensions of the door for the software to then produce an accurate fire door schedule complete with diagrams, dimensions, project estimates and bill of materials.

Over the years, RapidSpec been continuously developing its software to offer the best solutions to its customers. Despite the pandemic, the company has achieved further growth and has big plans for the future. Robin Bell, Sales Manager at Rapid Spec commented, "We are expanding internationally, with a focus on the Commonwealth in the first instance. We have also just recorded a video highlighting the enormous benefits of using RapidSpec on our customers' productivity. This should be available on the website very soon."

**For more information, please see below:**  
**T 03337 000017**  
**robin@rapidspec.co.uk**  
**www.rapidspec.co.uk**



## Eco-Friendly Plastic Products News

# The Zero Maintenance Alternative to Wood



## Recycled Plastic

- 100% recycled and recyclable
- Impervious to fungi, algae, insects
- Never rots, splinters or cracks
- Graffiti resistant
- UV protected
- Eco-friendly and low carbon
- 100% maintenance-free
- Lasts a lifetime



sales@kedel.co.uk | www.kedeltrade.co.uk | 01282 861325



# DCON Safety Consultants

Established in September 2016, DCON Safety Consultants is a leading independently-owned Built Environmental Safety, Health & Wellbeing Consultancy based in Dublin city centre. Managing Director Diarmuid Condon explains more.

The consultancy prioritises and specialises in the highest levels of informed and intelligent advice, senior project resource allocations and compliance assurance. It knows that every project with potential benefits also has potential risks with the art of planning centring on the coordination of these two zones of uncertainty. DCON's team of highly-experienced construction professionals consistently ensure your best interest and statutory conformity.

DCON is committed to understanding the specific needs, goals and desires of each individual client and project. Upon gaining this special understanding, it commits itself to the implementation of a design and construction management plan that will meet or exceed these requirements. Honesty, integrity, trust and professionalism are the cornerstone of every job.

The company's greatest resource is its exceptional team of technical construction and safety consultants who provide team-oriented services on an as needed basis. DCON's consultants and alliances with other key

## Eco-Friendly Plastic Products News

### Eco-Friendly, Low Carbon, Maintenance Free Solutions

Concern for the environment and action to modify our behaviour is strongly supported by young and old alike. Climate change is not a myth. It is already happening.



In addition, the cost of ownership is often not taken into account when pricing up a project, yet it's a significant additional cost.



If you are going to spend the money, time and effort, doesn't it make sense to design properties that stay looking good, without an ongoing cost for maintenance?

#### The Solutions

Recycled plastic profiles are an ideal replacement for traditional building materials and with no requirement for ongoing maintenance.

#### Rapid Growth

A family business Kedel Limited, based in Burnley have just celebrated their 12th birthday. They've experienced extraordinary growth of approximately 30% a year, since 2010.

#### Industry Recognition

It's clear that the building industry is eager to play a part in reducing its impact on the environment, having previously been regarded as a major contributor to global warming and waste plastic pollution.

#### Typical Example

Kedel's decking products were used for the viewing platforms on the Archelor Mittal Orbital Tower at the London Olympics to reduce its carbon footprint. More recently the National Trust is replacing wooden fencing with recycled plastic from Kedel as it means they will just need to do the job once.

#### Wide Range

Other popular products include: V-Cladding, T&G, Decking, Fencing, even Outdoor Furniture, the list is endless. It's as easy to work with as wood, produces 250% less CO<sub>2</sub> in manufacture compared to virgin plastic.

T 01282 861325  
sales@kedel.co.uk  
www.kedeltrade.co.uk



individuals and organisations allow it to support clients in all divisions of design and construction safety.

With DCON, the client is assured of top-level focus from its team of professionals. Bringing recent Lessons Learned



from its projects, the company has delivered Pre-Planning & Post Planning Health & Safety and PSDP | CDM Consultancy services to multiple sectors, understanding and managing key success factors and risks. DCON Safety Consultants is relentless in supporting safe outcomes and safe design quality to realise your vision. Our controls approach is rigorous, tackling the big issues head on.

T +353 (0)1 611 1556  
info@dconsafety.com  
www.dconsafety.com



## Leaders in Built Environmental Safety and Health and Wellbeing Consultancy

Consulting on various aspects of project design, constructability and operational lifecycle matters for local and global commercial clients.

#### CONTACT US:

DCON Safety Consultants  
Suite 5, Fitzwilliam Square East, Dublin 2  
Email [info@dconsafety.com](mailto:info@dconsafety.com)  
Phone +353 (0)1 611 1556

[www.dconsafety.com](http://www.dconsafety.com)





**YOUR MATERIAL HANDLING PARTNER**  
**FORKLIFT HIRE - FORKLIFT SALES**  
**SERVICE & MAINTENANCE**

**We pride ourselves in supplying a prompt, reliable & helpful service**

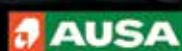
Over **40 years** of experience helps us deliver a first class service to our customers.



THE RIGHT SOLUTION FOR EVERY APPLICATION



RANGE OF SCRUBBERS AND SWEEPERS



PREPARED FOR ANYTHING



RANGE OF ACCESS EQUIPMENT TO COVER YOUR NEEDS



**WE PRIDE OURSELVES IN SUPPLYING A PROMPT RELIABLE AND HELPFUL SERVICE**  
**davison-forklift.co.uk T 01952 915060 sales@davison-forklift.co.uk**





[www.tomorrowsforests.co.uk](http://www.tomorrowsforests.co.uk)

Tomorrow's Forests can assist with the supply and planting of high quality local trees as well as sundry products required for your woodland creation project.

Our professional and dedicated team will carry out all the necessary surveys of your property, produce detailed designs and, with our skilled planters, implement the new woodland creation to the highest standard to meet your exact requirements.

We will provide help and advice throughout the process and ensure that specific government funding requirements are met. Following the completion of your woodland creation project, we can offer ongoing maintenance, upkeep and professional advice.

There are many advantages to the planting of trees on less productive or unused land areas and farmers and landowners can now obtain a number of government grant and funding options to help with establishing new woodland areas.

Woodland creation projects can be undertaken on suitable land from 3 hectares up to larger areas of over 10 hectares and can provide substantial environmental and financial benefits.

### Woodland Creation Benefits Include:

- Timber production
- Increasing land value
- Providing shelter for crops and livestock
- Providing new wildlife habitats
- Stabilising river banks
- Game cover
- Improving the amenity value



# Vandecasteele Houtimport's No.1 objective – 100% Certified Timbers from 2025 onwards

A family-run timber company Vandecasteele Houtimport, founded in Belgium in 1883 is today run by the fourth and fifth generations of the Vandecasteele family.

A modern and expanding business, it has a long-term commitment to service a wide variety of customers in the construction, joinery, cladding and furniture sectors, as well as the high-end marine industry.

Located right in the heart of Europe, with easy road access to customers in all European markets, Vandecasteele Houtimport has over the years consistently developed its long-term strategy to become Europe's number one timber stockist.

Vandecasteele Houtimport imports timber and timber products from over 45 countries worldwide. Its facilities are located in Kortrijk, Aalbeke, Belgium, where the company specialises in the import, trading and export of tropical hardwood from Africa, Southeast Asia and South America. The company also provide Scandinavian and Russian Softwood, Siberian Larch, North American Soft and Hardwood and European Hardwood.

The company has been passed down through the generations to its current owner Stefaan Vandecasteele. Stefaan took over the running of the company in 2000 and together with his son Louis, keep the company's family spirit alive.



Its impressive set up allows its storage facility, which is situated on 39.5 acres of land to accommodate more than 150,000m³ of sawn timber products. The total covered space of the company's main warehouse reaches 16 Hectares, Implanted in a site of 60 hectares. Timbers coming from all over the world are centralised in one location, only a stone's throw away.

Working alongside timber importers, timber merchants and wholesalers, the company is able to deliver stock that is difficult to source within days using its own fleet of 18 vehicles. In a matter of days, Vandecasteele Houtimport has the resources and ability to adapt and bridge the gap between sources of supply in Africa, Far East, South America and North America to Europe. This makes the company the first choice with many importers and merchants.

The company has over 130 timber species in stock including the new addition of certified European Oak in Joinery, Prime and Super Prime grades and certified steamed Beech in all qualities. From the most expensive



and rare hardwoods, to a full assortment of softwoods in all qualities and sizes, everything is neatly bar coded and displayed.

**CERTIFIED timbers:** Its impressive and vast stockholding of hardwoods and softwoods is coupled with strong environmental credentials (FSC®, PEFC, OLB, LegalSource™) and an efficient, accurate processing of customer orders. The company has set a challenging goal to trade in 100% certified timbers only from 2025.

Experienced staff unload incoming lorries and prepare outgoing deliveries and all parcels have a quality file in which the quality of the parcel is registered, with quality control inspections of goods at the ports of Antwerp or Ghent or in Aalbeke.

In 2021, Vandecasteele Houtimport has Invested in 17 new VOLVO trucks with Volvo Connect tracking system, 5 new side loaders of which 1 full electric and 10 new trailers. The racking system has also been extended which will now reach 5 miles.

The company has launched a dedicated customer portal, which allows customers to order their timber online. In a world where consumers seek instant response to any 'search,' Vandecasteele Houtimport's sales representatives have quick to real time information on all inventory moves from all over the world. The company is also investing in new IT tools to track and trace the timber from source and insure the provenance of the timber is EUTR compliant.

## Aligns with the 17 sustainable development goals

Vandecasteele Houtimport has set a challenging goal to stock 100% certified timbers from 2025. Currently, 100% of the softwoods the company stock is already certified and over 65% of the tropical hardwood. This number is continuously growing and makes Vandecasteele Houtimport the biggest stockholder of certified tropical timbers in Europe.

Vandecasteele Houtimport now provides its newest addition of stock that is certified European Beech and Oak in Joinery, Prime, Super Prime grades and flooring. The variety of stock from the company embellishes the company's taglines of 'Choose Life, Choose Wood' and 'Using timber is good, using certified timber is wonderful!' Vandecasteele Houtimport really do love what they do and have a strong passion to grow within the industry. One way in which the company is making growth take place is its reaction to how BREXIT has and will change the



industry. To combat new rules and importation structures, Vandecasteele Houtimport has set up a company in the UK – Vandecasteele Timber Ltd – that facilitates the trade to all UK partners.

Vandecasteele Houtimport endeavour to show that timber is the world's most ecological and sustainable material. And its future plans only echo the company's approach to sustainability within the industry. Vandecasteele Houtimport has a dedicated team to ensure all due diligence is up to date and in addition to the strict process, the company has invested in a forest engineer in Brazil to ensure full control on the CoC of the Brazilian timbers purchased.

## Circularity

Vandecasteele Houtimport are passionate about timber being used for sustainable building and construction material. Every step the company make boasts several ecological advantages showcasing the use of timber compared to traditional materials. With a low embodied energy and minimal carbon impact, timber really is the most sustainable material. It has an ecological, recyclable and biodegradable nature, which is why Vandecasteele Houtimport is implementing a strict sustainability policy in all of its future actions and activities.

## Long-term vision

Every step Vandecasteele Houtimport take, succinctly reveals the dedication and passion of the company and its future goals. As the company strive to be the European market leader in the trading of the richest assortment of certified timber, exclusively sourced from well-managed certified forests it is not going to be an easy journey,



but it will most certainly be rewarding. With the goal of maximising the social, economic and environmental value of timber, now and for future generations, Vandecasteele Houtimport is creating economical sustainable change in a world that needs it most.

Since the year 2000, Vandecasteele Houtimport has committed itself through the Corporate Sustainability Charter by signing up to environmental objectives exceeding applicable environmental legislation.

This year, Vandecasteele Houtimport has achieved the Charter for the 20th time in a row, which makes Vandecasteele one of the few laureates who participated for 20 consecutive years and successfully completed the trajectory.

All the initiatives are linked to the 17 sustainable development goals of the United Nations. A good annual assessment ultimately yields an annual certificate of the Voka Sustainable Business Charter. When the final balance is positive after three years, and companies have elaborated at least one action in each SDG, companies receive the internationally recognized Unitar-SDG Pioneer certificate.

Vandecasteele Houtimport is the first timber company in the world to have obtained the Unitar- SDG Pioneer Award!

**Buying from a responsible supplier makes YOU a responsible buyer!**

**For more information on Vandecasteele Houtimport and the products or services it provides, please see below:**  
T +32 56 43 33 00  
[www.vandecasteele.be](http://www.vandecasteele.be)





# Finding the right funding for you

In this issue of Building Update, we have selected SME funding UK Ltd as our Company of Choice 2022.

SME funding UK has over 20 years' of experience, specialising in commercial funding and invoice finance, and is well equipped with the resources, expertise and knowledge to assist you throughout the process of business funding. The company understands that as a business owner, you need quick results that provide you with the best funding solution. Utilising its expertise and access to over 150 lenders, SME funding UK has built a solid reputation on finding the right funding for its clients, echoed by its multitude of happy clients and testimonies.

SME funding UK Ltd is a business finance broker, which was established by current Owner Henry Audley-Charles, to source almost any form of business finance for UK and Channel Island businesses, using traditional, alternative, peer to peer and fin-tech solutions. Henry maintains an impressive amount of experience and has been working in the banking industry for a multitude of years. Working with all the major players in the industry, Henry has worked with Lloyds, RBS and HSBC in Commercial and Senior Business Development roles as well as being the Regional Sales Director for an Invoice Finance Company.

Working both ethically and transparently, the company truly takes on the importance of finding not just funding, but the RIGHT funding solution for its client, saving them time and presenting its clients with the straight facts. Expert customer service is at the forefront of the company's operations, utilising its finance background of nearly 30 years' experience of banks, invoice financiers and independent funders; SME funding UK Ltd boasts the skills, expertise and connections to provide the best individual funding solution.

SME funding UK Ltd assists its clients to find the right



funding for a variety of needs including helping with new and used: equipment, tankers, tools, trucks, vans and yellow plant. This is in addition to business finance requirements, including: Asset Finance, Bridging, Construction Finance, Personal Guarantee Insurance, Buy to Let, Cashflow, Commercial Mortgages, Invoice Finance, Loans, Property Development and Working Capital.

SME funding UK Ltd maintains a varied and vast amount of accreditations, positioning the company firmly at the forefront of the industry for its expertise. Some of its most notable accreditations include being authorised and regulated by the Financial Conduct Authority, a



member of the National Association of Finance Brokers and Financial Intermediary & Broker Association, and is registered with the Information Commissioner's Office. As the company is FCA authorised, this provides SME funding UK with access to better quality lenders ensuring that they can offer their clients the best deals.

Committed to assisting any UK business needing business finance and with constant expansion in terms of its services, SME funding UK Ltd also provides consultancy services to SMEs to help improve business systems and processes, specialising in the sales ledger and sales



order process. In addition, the company is consistently searching for new financing and services to offer its clients and has recently launched aviation and marine financing.

With its reputation being built on continuously exceeding expectations for its clients, SME funding UK Ltd is looking ahead to its future, set on continuing its hands on approach and dedication to clients. Henry added, "We plan to continue building a sustainable business working ethically and transparently with both our clients and lenders."

**For further information, please see the details below:**  
**T 01223 848844**  
**www.smefunding.uk**



## Building Products & Services News

### Steel buildings to suit all budgets

Founded by Dave O'Brien in August 2017, Castle Steel Buildings has evolved from a basic start-up, operating on what was essentially a franchise model, to a rapidly growing construction company with a permanent install team and a developing back-office operation.

Previous to the company, Dave O'Brien had worked in the steel construction industry as an installer for over 20 years. After many years, Dave was keen to build his own business that offers bespoke steel buildings with a guaranteed installation option. On the search for a business partner who could run the administration and logistics side, Dave approached John Rosling, who had a number of years' experience in public and private sector management. Since joining, the business has grown in strength at a fast pace.

Today, Castle Steel Buildings is well known as an industry leader in its field. Offering a number of services to suit every budget

including steel buildings for agriculture and rural, commercial and industrial, garages and sheds, as well as cladding installation.

Understanding that customers prefer a personalised service, Castle Steel Buildings is committed to ensuring 100% satisfaction from start to finish and prides itself on its; affordability, to offer cost-effective light weight composition of the buildings designed to reduce production and installation costs; versatility, with a range of buildings to suit every application; and top British quality, endeavouring to always support British economy. all Castle Steel Buildings materials comply with British Standards BS 6399(pt 2) and exceed ISO9001-200.

"These are among the many qualities that set us apart from our competitors," mentioned John Rosling, Director.

COVID-19 has left a dramatic impact on steel production over the last 12 months, with many steel mills across the world shutting down. As such, steel suppliers are running low on stock, the price of steel has risen and there are incremental delays to customer orders. Castle Steel Buildings has worked hard to ensure this implication has not affected its production and most of all, its service to its customers.

"One of the major things we've noticed over the last year is that many people are put off having their steel building because of the

cost of raw materials, something that has increased enormously with the pandemic and global shutdown. We've met this challenge by partnering with Peregrine Finance in York to offer a bespoke finance solution. This is a great option for companies looking to get their projects off the ground quickly while spreading the cost over time," said John.

With more to offer in its arsenal, we asked John what the company's future plans were, he answered, "Alongside a determined go for growth mindset, we're focussed on developing our range by introducing hot rolled steel designs. Cold rolled steel is inexpensive and effective but there are some limitations in the scale of building that can be done in cold rolled steel."

**For more information, please see below:**  
**T 01302 301402**  
**info@csbuildings.co.uk**  
**www.csbuildings.co.uk**



## TALENT-ctct

# CONCRETE QUALIFICATIONS FOR ALL

Enrolments now invited!

**On-line training leading to Institute of Concrete Technology qualifications**

**Concrete Technology & Construction**

- General Principles
- Practical Applications

Courses approved by

The Institute of Concrete Technology

**FURTHER INFORMATION:**

info@talentconcretetraining.org.uk

+ 44 (0)7967 334640

www.talentconcretetraining.org.uk



## Peter Minter: The Brickmaker's Tale

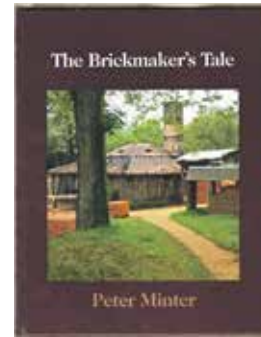
**P**eter Minter and his son Tony are well-known for their father and son business, Bulmer Brick and Tile. The family-run business has successfully been running for over 80 years and is extremely proud to say they have excellent expertise and knowledge in this industry.

Peter Minter wrote his own book, *The Brickmaker's Tale*, which entails a unique history of the Bulmer Brickyard and the craft of brick-making. Bulmer Brick and Tile pride themselves in saying that they are the most traditional in the UK that still uses methods to make bricks



which dates all the way back to 1450. The first section of *The Brickmaker's Tale* focuses on the early history of the site, the second part of the book explores from 1936 onwards when the Minter Family acquired to the company.

Finally persuaded by family and friends, Peter Minter wrote a book that recorded some of his unique knowledge and memories in a book. The book highlights the story of the Brickyard and the people that have worked there throughout the years. *The Brickmaker's*



*Tale* touches on the recreation of historic bricks for National Trust properties which include Hampton Court Palace and Blickling Hall in Norfolk, not to mention the bricks for the extension of St Pancras Station in London.

*The Brickmaker's Tale* is available from local bookshop Kestrel in Sudbury Suffolk or direct from Bulmer Brick & Tile Co Ltd.

**Contact**  
**T +44 (0)1787 269232**  
**bbt@bulmerbrickandtile.co.uk**  
**www.bulmerbrickandtile.co.uk**

**T 01787 269232**  
**bbt@bulmerbrickandtile.co.uk**  
 Please visit: **www.bulmerbrickandtile.co.uk**

*Bulmer bricks are made from the finest London Clays, dug from our seams almost continually since Tudor times. All Bulmer bricks are hand made, using traditional methods of making, drying and are fired in a coal burning, down draught kiln. We are a small family business continuing the traditions of brickmaking on this site dating back to the Middle Ages.*

*We work on large projects for the National Trust, English Heritage and Historic Royal Palaces, but are just as proud of some of the small private work undertaken by individuals.*

**The Brickfields, Bulmer, Sudbury, Suffolk CO10 7EF**  
**Tel: 01787 269232**  
**Fax: 01787 269040**  
**Email: bbt@bulmerbrickandtile.co.uk**

## Traditional brick production specialist



**T**he Bulmer Brick and Tile Company, based in Suffolk, is a family-run business established in 1936. With over 80 years' experience in the industry, the English company truly is a master of its craft.

The Bulmer Brick and Tile Company is renowned for its traditional handmade bricks which, fired in a down draught kiln, have a distinctive finish that blends well with the original London clays bricks. The beauty of the Suffolk company's bricks lies in their traditional production method. The bricks are made from clay dug from the same clay seam used since Tudor times. The wealth of experience amassed by the company coupled with their respect for the process is what separates The Bulmer Brick and Tile Company from the competition.

Having produced bricks for reputable clients such as the National Trust, English Heritage and Historic Royal Palaces, the company is able to lend its services to both private and commercial developments. Its facings and specials can be made with almost any texture; with 150 different sizes of facings and a range of over 5,000 special shapes, including all standard plinths, squints and copings and extends to purpose made chimney bricks, terracotta, mullions, jambs, floor bricks, paviours, decorative plaques, garden edgings and a full range of rubbing blocks.

Aside from offering a wide range of clay brick solutions, The Bulmer Brick and Tile Company further offers a select number of additional materials. It is a stockist of Singleton Birch Natural Hydraulic Limes and Lime Putty, available in a range of strengths – NHL2, NHL3.5, and NHL5 – and sold in 25kg bags or 1 tonne bulk bags. Lime has proven to be the material of choice when laying the brick specialist's bricks and especially in the case of conservation work, with its natural strength and tendency to give 'movement' in the construction process favourable.

Among the additional materials offered are lath, chestnut lath and riven oak supplied in bundles, used for plastering or for roofing and the application of shingles. Further, The Bulmer Brick and Tile Company offers sheep's wool insulation, an efficient and eco-friendly insulation solution.

**Contact**  
**T 01787 269232**  
**bbt@bulmerbrickandtile.co.uk**  
**www.bulmerbrickandtile.co.uk**



## Dolwin & Gray

Established 1969

**Professional, fully trained & qualified Tree Surgeons & Landscapers in & around London & the South East.**

Hedge, Copse & Woodland planting  
 (Transplants to semi-mature)

Cultivation & Seeding Paddocks etc Turfing.

All aspects of Tree Work, Surveys and Reports to BS5837:2012  
 Trees in Relation to Design, demolition and construction – Recommendations.

**Tel: 01892 853232 • Fax: 01892 853434**  
**Email: enquiries@dolwinandgray.co.uk**  
**www.dolwinandgray.co.uk**

## LE TONKINOIS

## NATURAL OIL VARNISH

**Le Tonkinois is a traditional natural oil based varnish. It is perfect for outdoor, indoor or marine use. With Le Tonkinois varnish the options really are endless.**

Combining unrivalled long lasting protection on materials including wood, metal, cork, stone, teak, mdf and grp Le Tonkinois varnish leaves absolutely no brush marks and will restore the beauty and colour of the wood. Flexible enough to move with the timber and able to withstand abrasion and impact, Le Tonkinois varnish is resistant to boiling water, UV, petrol, diesel and sea water. It won't crack, chip or peel off, making it perfect for all outdoor purposes as well as indoor.

**www.letonkinoisvarnish.co.uk**  
**01628 548840**



## Waterproofing you can rely on

Carlisle CM Europe (CCM Europe) manufacture high quality EPDM waterproofing membranes for flat roofing, façade systems and building solutions for the construction industry.

CCM Europe is a dynamic company with ease of installation and durable roofing systems including EPDM & Liquid Waterproofing. As a leading manufacturer of waterproofing membranes and sealants, our market leading products are suited for a wide range of flat roof substrates for both new build and refurb.

The market leading advantages of Resitrix® is the unique combination of materials: the synthetic rubber EPDM and polymer-modified bitumen – making it a durable hybrid membrane. Our extremely flexible, single-layer waterproofing membrane can thus be applied on almost

all substrates. The membranes are welded together quickly, easily and safely using a hot-air device without any need for naked flames,” stated Shail Chauhan, Marketing Manager.

One particular product worth noting is the ARBOFLEX® PU, a single component liquid made from pure polyurethane, which, once cured, forms a seamless elastic membrane without any joints. The material properties of ARBOFLEX® PU enable it to be air tight and waterproof on a range of substrates.

Alongside its high performance and wear-resistant membrane, ARBOFLEX® PU can adapt to any surface: uneven, curved or irregular, and with its fast-curing properties can be walked on in 24 hours. Comprised of one component that can be applied straight out of the tin, it allows for fast and easy installation, is green roof compatible and weather resistant, so it can be used all-year round.

CCM Europe is not only dedicated to offering state of the art EPDM flat roofing seal solutions, but to also extend its expertise and knowledge to other professionals through its dedicated EPDM and PU Liquid system roofing training courses at the CARLISLE® ACADEMY. Designed by professionals for professionals, with a view that knowledge is sustainable material. The more you share it, the more you get back. The training content is intended to enable attendees to learn of the proven advantages of EPDM waterproofing solutions relating to roofs, façades and building in an up-close and hands-on manner. For more information, visit: [www.academy.ccm-europe.com](http://www.academy.ccm-europe.com)

Allowing for change creates space for continuous growth and a new perspective. We have recently strengthened our sales and distribution network covering the UK and the ROI market. We have also welcomed a few new

members to our sales team, Charlie Patrick and

Crawford McAllister. Charlie looks after our Eastern region and Crawford looks after the North and Scotland.

With ambitions to continue their impressive growth, CCM Europe plans to keep collating together more opportunities for further development. As a dynamic company that aims to support and motivate its people as much as possible, it is continuing to review and develop new products all the time.

**T 01623 627285**  
**info.uk@ccm-europe.com**  
**www.ccm-europe.com**



## TuffStuff® Flexible GRP, the latest GRP roofing innovation from Tuff Waterproofing

TuffStuff® has created the best multipurpose GRP roofing system on the market, with its TuffStuff® Flexible GRP already receiving rave reviews from customers. One resin with endless possibilities, the Flexible GRP provides an exceptional combination of versatility and durability. Quick to lay, with no need to strip or re-deck a roof, this fast-curing system saves time and money.



Essentially, it is a single-resin solution, which can be applied to a multitude of surface types and structures including vertical sections. The resin can be applied directly to felt, asphalt, single-ply, GRP, concrete, timber or metal and with its combined fast-curing system the resin can be walked on within 30-60 minutes of being laid. Its highly flexible, extra-tough, seamless waterproof membrane rapidly breaks down with CSM reinforcement for quick and tidy detailing. Once laid and whilst curing, the TuffStuff® Flexible GRP is showerproof.

There is no need to hunt down two or three tubs, as its one-pot system means one coat can last up to 10 years and two coats, 20 years (the 20-year system qualifies for a 20 year Product Warranty). Negating the need to strip back and replace, Flexible GRP saves time and money by overlaying a roof. To book a TuffStuff® Flexible GRP product demo, visit the company website below.

TuffStuff® is the UK's premium designer, and supplier of heavy-duty GRP waterproof flat roofing systems. Located in North Yorkshire, TuffStuff® supplies through a dedicated stockist network throughout the UK. The company's experienced product development team is always pushing the boundaries to create products that revolutionise the industry and effectively, make roofing systems simpler. British born and bred, the company works closely with its customers and its own UK based manufacturing facility to produce an evolving product range that is suitable for multiple flat roof applications.

The company is heavily established in 30 years of research and development and has been thoroughly testing and designing products for roofing applications since the 1980's. Perfect for use within a domestic or commercial environment, the company has grown year-on-year to become of the industries finest and most valuable assets to the GRP flat roof market. Tuff Waterproofing is committed to fulfilling its ecological targets over the coming years.

Deploying a mission to create successful long-term relationships with its customers by understanding their needs, TuffStuff® deliver a range of market-leading products alongside a premium support service. Other products include resins and catalysts, reinforcing materials, roof trims, application tools, and decking boards. Each product category holds its own product range that embody the same TUFF traits designed to tackle all the elements.

Further to its product range, TuffStuff® is proud to offer the most comprehensive training programmes within the flat roof industry. It has a dedicated team on hand to deliver individual and group training sessions on the TuffStuff® installation process, the products within the range and how goods must be stored to maintain its optimum condition. Striving to provide all customers with the highest standard of flat roofing products, TuffStuff® is always looking to improve. Part of the business is to offer technical support services to each customer ensuring they feel confident and have a support network behind them allowing them to get the best out of TuffStuff® products.

**For more information, see below:**  
**T 01977 680250**  
**orders@tuffwaterproofing.co.uk**  
**www.tuffstuff.co.uk**

### EXCITING NEW PRODUCT

**Providing an exceptional combination of versatility and durability. Quick to lay, with no need to strip or re-deck a roof, this fast-curing system saves time and money.**

**It's a single-resin solution which can be applied to a multitude of surface types and structures including vertical sections.**

**With two coats applied within one hour, TuffStuff® Flexible GRP will form a highly flexible, extra tough and seamless waterproof membrane – can be a solution for areas of heavy duty foot traffic.**

**T 01977 680250**  
**orders@tuffwaterproofing.co.uk**  
**www.tuffstuff.co.uk**

### Protect your investment

## TUFF WATERPROOFING'S POLYURETHANE FLAT ROOFING SYSTEM FOR COMMERCIAL MARKET

Tuff Waterproofing, the UK's leading supplier of heavy-duty GRP waterproof flat roofing, has launched a new system offering a combination of fast installation, ease of use and high performance which is ideal for the commercial market.

Tuff Tech Pro VP/UV is a durable, completely seamless waterproof encapsulating membrane which is ideal for new or existing flat roofs, walkways, balconies and gutters. Its advanced fast-curing formulation is quick and easy to apply, significantly reducing time and labour on site. Available with installation training on request, the product is non-hazardous and can be applied in damp atmosphere.

A Tuff Tech Pro VP/UV is a high-build, elastomeric, moisture-triggered polyurethane membrane comprising three layers of advanced polyurethanes incorporating a separate technically advanced reinforcement layer. It can be recoated at any time prior to the end of its maintenance life, thus extending its working life indefinitely. Training is available at your local stockist upon request.

Please visit **www.tuffstuff.co.uk**  
**T 01977 680250 • orders@tuffwaterproofing.co.uk**

### Waterproofing solutions for flat roofs, facades and buildings

For trade, sales and distribution enquiries  
Call: 01623 627285  
Email: [info.uk@ccm-europe.com](mailto:info.uk@ccm-europe.com)

[www.ccm-europe.com](http://www.ccm-europe.com)

## Building News

Gabriels Farm, Marsh Green, Edenbridge, Kent, TN8 5PP

**Design your garage on our website to get an instant price**

W: [crownoakbuildings.co.uk](http://crownoakbuildings.co.uk)  
E: [info@crownoakbuildings.co.uk](mailto:info@crownoakbuildings.co.uk)  
T: 01732 866910



## Complete compliance solutions

Since 2014, CheckedSafe has provided simple and inexpensive tailored compliance solutions. Established by Gary Hawthorne and Darran Harris, CheckedSafe is a SaaS platform compliance provider providing several apps and a web-based reporting system that is multi-functional and secure.

The CheckedSafe system offers organisations a complete solution, enabling them to manage and protect their workforce and comply with legal compliance requirements whilst reducing cost and liability.

Located in Burnley, its system is global and can be accessed from anywhere as long as you have an internet connection for the management portal, the app itself works off line and on-line so there is no restriction on using the app.

Both Darran and Gary's individual expertise has resulted in CheckedSafe being a nationally recognised company.

CheckedSafe has a range of services from vehicle compliance solutions, compliance and regulations, risk assessment and incident reporting tools

via the App that enables them to offer the client a complete solution.

With much of the industry yet to explore, over five million commercial vehicles in the UK and over 20 million pieces of plant, there is a huge market for CheckedSafe to expand into.

CheckedSafe's web-based reporting system is accredited by DVSA and the FLTA and utilised across all fleet types of HGV, PCV, VAN, plant or utilities. If it needs a checklist, CheckedSafe can digitise and catalogue it, providing you

with a cost-effective compliance solution.

Despite COVID-19, CheckedSafe has managed to outsource all marketing resulting in an increase in in-bound enquiries. Utilising platforms such as Zoom and Teams, less time has been spent travelling and more focus has been on growing the business from home.

**For more information, please get in touch:**  
**T 01282 908429**  
**info@checkedsafe.com**  
**www.checkedsafe.com**



## Software News

### Measure PDF and DWG drawings

QuickScale will measure areas, lines, heights, widths etc. easily and quickly.

Print the drawing to scale.

Print the drawing with your measurements in colour

Do you print your drawings to measure them?

Do you use a scale rule?

No annual renewals.

One off payment.

Free updates and support.



**20% discount:**  
**Use code SP20**

**30 day free, no obligation trial on:** <https://www.quickscale.co/trial.html>

**Visit our website at:** <https://www.quickscale.co>

**To purchase:**  
<http://shop.anyscale.co>  
**See video link here:**  
<https://youtu.be/S7jlqBOD4Wo>

# CheckedSafe

VEHICLE AND ASSET COMPLIANCE Defect Reporting, Compliance Management & Fleet/Asset Maintenance Solution

### FLEET MAINTENANCE

- Full PMI Templates
- Service Sheets
- Bespoke PMI & Service Sheets for those who want that bit extra
- Fully DVSA Compliant & Accredited
- Automated Scheduling
- Daily Reports
- Weekly Reports
- Cost Module for fleet running costs
- Digitise your current 3rd party reports & file in the cloud

### FIRST & PRE-USE DEFECT CHECKS

DVSA, HSE, FORS, Border Force, Fork Lift Truck, Plant & Machinery

LOLER, PUWER & ADR

Fully customised templates

Data is realtime

You **CANNOT** manipulate data

Full audit trail with user interaction recorded at each stage

Check time/date/location/movement validation

**NOW INCLUDES:** Lateral Flow Test record template to record & file your COVID19 test. Great for keeping all in one place & you can even schedule the tests through our system

### OTHER FEATURES

- Assign checks to staff/vehicle types
- Wildcard Search
- Send group notification
- Send & queue messages
- Reporting Suite
- ANPR or vehicle registration input
- Depot hierarchy structure
- 3rd Party Fleet Management
- Geo Location & Geo Fencing
- Push Documents (put your handbook & other documents on the app for users)
- COVID Focused Templates
- Risk Assessments via the app
- Lone Working

Contact us today for more information or to start a free 30 day trial email: [info@checkedsafe.com](mailto:info@checkedsafe.com) **TEL: 01282 908 429**

## Visual Audio News

**melaphone**  
visual audio

When you need to talk...**Safely**  
 100% blocking of viruses and pathogens  
 0% transmission of air-flow



**Melaphone Speech Unit**  
 Fully certified to ISO 14644 -1 Class 5

01359 233191  
[info@melaphone.co.uk](mailto:info@melaphone.co.uk)  
[melaphone.co.uk](http://melaphone.co.uk)

In use for over 50 years



## Measure PDF and DWG drawings

How do you measure your drawings?  
 Are they to scale?  
 Do you print them to measure them?  
 Do you use a scale rule?

QuickScale will measure areas, lines, heights, widths etc easily and quickly.

To start, all you need is one accurate measurement like a door width or parking space.

Take off any measurement or any shaped area by clicking on the points and corners of that measurement or area.

Print to scale on A4 to A1 printers even if the original was created in A0.

Print to scale when the drawing has no scale.

Export dimensions to a spreadsheet and/or print the drawing with the measurements showing in colour.

Faster and more accurate than a scale rule.

We've tried to keep QuickScale easy and simple to use. You don't need hours of training and you don't need extensive pc knowledge.

We are available to help you and answer any questions you have for as long as you need us, at no extra cost.

Licences are purchased outright, there are no annual renewals. Updates are free if you keep your keycode.

30 day free, no obligation trial on <https://www.quickscale.co/trial.html> or see youtube link <https://youtu.be/S7jlqBOD4Wo>

Visit our website at: <https://www.quickscale.co>  
 To purchase: <http://shop.anyscale.co>

20% discount code for this advert only: SP20





## Plants and Sundries to the Trade

Based in Lower Withington, Near Macclesfield only five miles from junction 18 M6, Four Oaks Cash & Carry is now the largest Horticultural 'one stop shop' in the UK!

Since day one, we have attained our impeccable range and service to our customers propelling us far in front of our competitors. The Manager, Marlon Kent, who has over 30 years of plant and tree knowledge, handpicks our stock. Pre-COVID-19 restrictions Marlon would travel to Italy and Spain in the early months of the year, ensuring only the best quality of stock is acquired. This stock would include specimen trees, plants and sundries to the trade. Nowadays, as with most things, this is done via the internet, quality is not compromised as the stock is now 'visually picked.'

Four oaks is a specialist supplier of Mediterranean plants, our stock includes Olives and Palms in pots from 1 litre up to 1,000 litres and these are available all year round. We have an extensive product line of over 1,500 lines of trees and shrubs on display from starter plants to specimen sizes, as well as young bedding and basket plants for which we are historically known.

Catching site of the recent demand for outdoor seating, specifically from the leisure industry, Four Oaks made the recent decision to begin to stock high quality garden furniture, and this decision has been a resounding success through its sales. Furthermore, we have extended our range of pots, which include terracotta, glazed and

authentic wooden half whiskey barrels, just a few of the exciting addition to our ever-growing product line.

We also offers compost and feeds, a wide range of Draper garden tools, hanging basket and liners, pots, bowls and planters, a range of Meadowview stone, sundries pots and bowls, a large range of sundries are available as well as a new range of aggregates being added to the company's Autumn stock. Seasonal specials are common at Four Oaks, alongside its superb selection of planted hanging baskets and patio pots.



and specimens, which can be used for commercial and amenity landscaping. Our Italian plant range has over 70 different varieties enabling customers with a more complete range of choice, combined of small shrubs, large specimens and arches, to the more formal structural specimens.

Four Oaks stock has one of the widest ranges in the North West for shrub

**For more information, please see the details below:**  
**T 01477 571797**  
**www.fouroaks-nurseries.com**

## Woodworking Tools, Machinery & Agricultural News

### Salvador Crosscutting Solutions from Daltons Wadkin



Daltons Wadkin offers over a dozen different models of crosscut saw to suit almost any application; from traditional radial arm saws to fully automatic chain loading crosscuts for high volume production. This month, we focus on the Salvador range of products; a comprehensive range of labour saving, cost cutting solutions that are becoming the industry standing for manufacturers of garden furniture, studios, sheds, timber framed buildings, fencing, joinery products, pallets and cases.

**SuperUp 500**  
New for 2021, this semi-automatic crosscut features safe two-handed operator control, a stronger design, retractable front guard for easier loading, and improved accessibility for maintenance and blade changing. Blade capacities of 500, 550 and 600mm are available with increasing cutting capacity. Further customise with a choice of infeed and outfeed roller tables and stop systems.

**SuperPush 150**  
Another new model for 2021, the SuperPush 150 is an evolution in crosscutting, combining the compact form factor of a manual machine with the programmable power of an automatic optimising crosscut saw. Now anyone carrying out crosscutting operations can take advantage of reduced labour costs, reduced waste, increased productivity, and increased accuracy.

**SuperPush 200**  
To fully exploit the advantages of Salvador technology, only a fully automatic saw will do. The SuperPush 200 can increase yield by 15% or more, reduce labour by over 50%, reduce operator skill level, increase productivity, reduce costs and provide a safe working environment. A choice of outfeed systems can further automate the sorting of cut stock and waste offcut removal.

**SuperPush 250**  
Capable of processing up to 130 cubic metres of timber per shift, the SuperPush 250 is a chain fed monster. Up to 7 loading chains allow the machine to be continually fed with individual or stacked work pieces for uninterrupted production. Direct inkjet printing options are available to keep track of finished stock.

**SuperAngle 600**  
Angle cutting offers the largest potential for waste reduction and material optimisation. Capable of straight and angle cutting up to (+/-) 75° the SuperAngle 600 not only optimises the cutting list by length, but also by angle, flipping pieces if necessary, nesting angles to further reduce waste. Chain fed infeed system and independent drilling units are ever popular options.

**To see how a Salvador crosscut saw can benefit your business, contact a member of our sales team on: 0115 986 5201, email: info@daltonswadkin.com or visit: https://www.daltonswadkin.com**

**SALVADOR**

**Automatic crosscut saws**

Daltons Wadkin offer a comprehensive range of automatic programmable crosscutting systems for straight and angle work complete with powerful optimisation and defecting software as standard.

production costs reduced by up to **50%**

**5-15%** less wood used

Visit our Nottingham showroom for a demonstration

**DALTONSWADKIN**

Sole UK & Ireland Distributors  
tel: +44 (0)115 986 5201  
www.daltonswadkin.com

### Cracking egg processing equipment from 4pe Systems Limited

4pe Systems Limited is an egg handling and processing equipment provider and stockist of Kletec, Nuovo and is an agent for SANOVO and STAALKAT. Based from its location in Shrewsbury, the company provides a wide range of expert services including maintenance, installation and sales throughout the UK and Ireland. 4pe Systems Limited provides a comprehensive service, establishing itself as a one-stop-stop solution for egg processing equipment.

In terms of its range, 4pe Systems Limited provides sales services for egg handling and processing equipment including: egg stamping, packaging, pasteurization, eggshell processing, breaking, loading, Farmpackers, graders and much more. Furthermore, the company can provide equipment for a wide selection of processes and sizes, from small Farmpackers right up to large egg processing systems; 4pe Systems Limited can do it all!

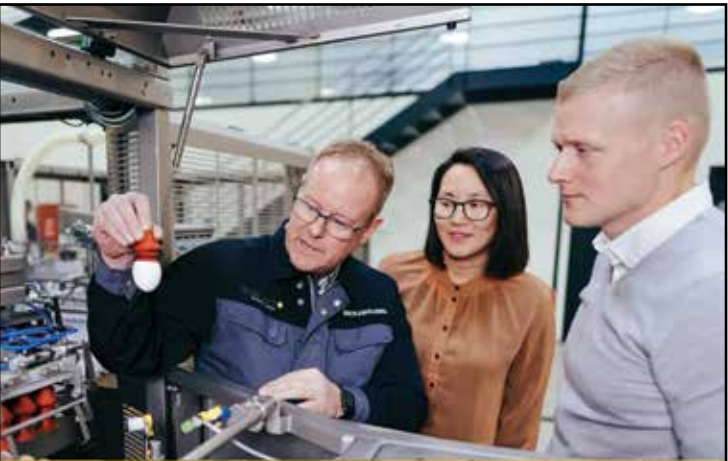
4pe Systems Limited has gained a reputation for quality, which is reflected both in its products and services. Using Dutch innovation and expert engineering, 4pe Systems Limited's range is fully comprehensive, reliable, robust and efficient. Better yet, the company's range is supported by a



friendly and reliable team who is always around and able to pick up the phone, with a positive, helpful reply to assist its customers, whenever they need them.

One of the most noteworthy brands and ranges that 4pe Systems Limited provides is its Nuovo range of printing and stamping machinery. Nuovo egg printing systems manufactures printing systems for marking and coding eggs. Utilising its patented cartridge based ink jet egg printing technology and screen print egg stamping technology, 4pe Systems Limited provide Nuovo's innovative range of egg stamping systems including: stamping on Farmpackers, stand-alone stamping, stamping on grader and manual stamping.

**For any more information please see the details below:**  
**T 07801 565860**  
**www.4pe.co.uk**



#### We are ready to assist you

In the food and egg processing industry SANOVO TECHNOLOGY GROUP has gained the reputation of being a manufacturer of machines, equipment and turnkey projects of the highest quality and performance.

We supply a complete range of equipment, knowhow of service for the egg handling and processing industry, solutions for egg inoculation and harvesting for the vaccine industry as well as end-of-line automation and robotics.

As a customer you become part of a dedicated global organisation who will thrive to make your production and business a success.

Tel: 07801 565860  
www.4pe.co.uk  
www.sanovogroup.com





## Concrete Channel with Basalt Fibres: New Era Begins for Hauraton

**H**auraton makes concrete material even more efficient for modern drainage technology by enhancing the formulation with natural basalt fibres.

The addition of mineral or textile fibres increases maximum stability, strength, and impact resistance. By amplifying the impact resistance, the more robust and durable the product. This is particularly important for components that are exposed to considerable dynamic stresses, in this case, drainage channels subject to vehicles at high speeds or regularly trafficked by heavy loads.

**Basalt fibres: Natural and sustainable**  
Hauraton's new era in concrete production by utilising basalt fibres has not only created a durable building material, but also one that is 100% natural. The basis of basalt rock is available all over the world in large quantities, which is formed naturally on the earth's surface. By combining basalt fibres with the well-known material concrete, both the structure and the service life of the product is increased.

**Mineral mixture: Easy to recycle**  
Since the end product is a purely mineral mixture, there is no need for material separation during disposal. This protects the environment as it is simply fully-recyclable at the end of the product's life cycle.

**Convincing strong properties**  
Basalt fibres have outstanding properties. They can withstand temperatures of up to 800°C and are highly resistant to alkalis, acids, salts, oxidation and radiation.

The effects of adding basalt fibres to precast concrete elements gives even more of a dimensionally stable, resistant and durable structure. Drainage systems made of basalt-reinforced concrete will assure longer performance.

**FASERFIX CONCRETE:**  
**NATURALLY BETTER**  
With the best properties from basalt fibres.



### Basalt fibres are versatile and climate-friendly

Basalt fibres are mineral fibres that have a higher melting temperature, better resistance to water, acids and alkalis, and more positive flexural strength. All this makes basalt fibres attractive in drainage technology, but also numerous other applications in construction.

Given the stricter climate targets, the energy consumption during production also clearly speaks in favour of basalt fibres, as basalt it has the lowest CO<sub>2</sub> footprint.

**Click here to learn more about FASERFIX linkable to this URL:**  
[https://global.hauraton.com/en/faserfix/?utm\\_source=bcr\\_publication&utm\\_medium=mail&utm\\_campaign=faserfix\\_bcr\\_online](https://global.hauraton.com/en/faserfix/?utm_source=bcr_publication&utm_medium=mail&utm_campaign=faserfix_bcr_online)

**T 01582 501380**  
<https://www.hauraton.co.uk/gb>

## New hydraulic Design Software for HAURATON surface drainage systems

**H**AURATON's new web-based application 'DesignSoftware' provides construction industry professionals with quick, simple hydraulic analysis, channel sizing, project design and product specification for the company's range of surface drainage systems (for landscape, commercial and civils projects) whilst working on their own desk-top computers, laptops and tablets.

**Immediate access for registration and use of this new hydraulic design software is achieved through the link: <https://hydraulicdesign.hauraton.com>**

User-friendly and free-of-charge, HAURATON 'DesignSoftware' provides engineers with the flexibility to create their own drainage designs and project specifications, with just three clicks to a hydraulic calculation.

HAURATON has used their 'in-house' hydraulic design software to create project designs for over 30 years with total reliability. In addition to this new software application, HAURATON offers a comprehensive design service, which is also free of charge.

**Further information is available at:**  
**[www.hauraton.co.uk](http://www.hauraton.co.uk) or by phoning:**  
**01582 501380.**

<https://hydraulicdesign.hauraton.com>

### HAURATON DesignSoftware – Features & Functions

- User-friendly, intuitive interface with quick, clear, simple steps to final calculations.
- Hydraulic calculations based on widely used 'Modified-Manning-Strickler' formula. Hydraulic discharge provided on a free outflow basis.
- Accommodates HAURATON's core range of linear drainage systems for total design flexibility (for landscape, commercial, civils and other project types). Includes all channel types and depths available.
- Rainfall intensity options in mm/h, l/s\*Ha and l/s\*m<sup>2</sup>.
- UK Software: UK Rainfall Map using data from 'Flood Studies Report'. User options for Return Period, Storm Duration and Climate Change.
- Automatic and manual channel run design functions.
- Constant-depth and step-fall channel configuration options.
- Accommodates both 0% and positive longitudinal ground slopes.
- Detailed hydraulic analysis of channel run designs.
- Controlled discharge function for HICAP® Slot Channel designs.
- Quick user tools for adding/duplicating runs, resetting designs, adding notes etc.
- 'Drag & Drop' function for adding Point Inflows to the channel run design. • Tributary channels can be linked



- to the main channel run being designed.
- 'Drag & Drop' function for adding system Accessories to the channel run design.
- Comprehensive product library for 'one-stop' specification data. HAURATON website links for additional product information.
- HELP file and tool-tips for detailed design guidance and advice.
- Project folder for registered users offering safe and secure server storage of final designs. Option to export design files for external storage.
- Automatic generation of .pdf project documents for specification support. Hydraulic Analysis, Materials List and Information datasheets available.

### Design Reassurance

DesignSoftware has been tested extensively and the methodology validated by an independent hydraulics consultancy company. HAURATON's 'in-house' hydraulic design software has been used successfully by their own technical personnel for over 30 years with total reliability.

### Confidential

Registered users (password protected) have access to safe and secure server storage regarding their final designs. Designs remain strictly confidential unless users tick to 'share with HAURATON.'

Registered users have the option to export design files for external storage in their own computers or for sharing with colleagues for further design or discussion. DesignSoftware has been configured to comply fully with GDPR 'data privacy' regulations.

### Experience & Expertise

A world leader in the manufacture of modular surface drainage systems, HAURATON drainage products have been supplied onto major projects within the UK and international markets for over sixty-five years. HAURATON developed their first linear drainage system in 1956.

Since that time the HAURATON brand has become known around the world as a benchmark for quality, reliability, durability and service.

**Contact**  
**[www.drainage-projects.co.uk](http://www.drainage-projects.co.uk)**

## H.D. Services Ltd: Sewage Treatment and Water Boreholes

**F**ounded in 1984 H.D. Services Ltd. aim to provide the highest quality percussion drilled boreholes, sewage treatment systems and Open-Loop ground source heat pump installations in the Southeast. Feasibility of any project can generally be confirmed upon receipt of a site postcode.

We offer a one stop shop for self-builders, developers, contractors, consultants and architects, providing waste and drainage solutions, independent water supplies and renewable heating options – all specifically tailored to meet individual needs and suited to the geology of the Southeast.

### Sewage Treatment, Boreholes and Soakaways

We have been involved in the design, supply and installation of sewage treatment systems for over 30 years. We can either provide package solutions or we can design bespoke systems to meet individual client needs.

Projects undertaken throughout the southeast range from small solutions for single households to larger scale solutions for estates, business parks, farms, schools, caravan sites, hotels and public houses.

We offer a support service for consent to discharge applications to the Environment Agency – a requirement when installing sewage treatment systems.



All our boreholes are constructed using the cable-tool percussion method - preferred by the Environment Agency (EA) when drilling the chalk aquifer – and are logged with the BGS. Our underpinning ethic is that we want to protect the aquifers from which we make our living.

### Ground Source Heat Pumps

We are award winning installers of Open-Loop GSHP installations. These systems utilise ground water as a heat source. Groundwater is pumped from a water supply borehole directly to the heat pump where temperature is extracted. The water is then returned to the aquifer, normally via a buried harvesting tank where it can start to regain this temperature. As ground water is utilised, there is the option of a potable water supply (subject to analysis and suitable filtration) or irrigation.

The heat pumps we install are manufactured



by a British company and are MCS accredited. All our heat pump installations are designed to be Renewable Heat Incentive eligible, for which we provide application support and advice.



We achieved regional success in 2015, 2016, 2017, 2018 and 2019 at industry awards. In 2020 we won the REA Pioneer Awards and this year we have achieved recognition at the East of England Energy Efficiency Awards, winning 2 categories as well as receiving a Special Commendation for one of our renewable heat installations at the 20/21 National energy Efficiency Awards, which were held on the 18th February 2022. Having never entered the national awards before, we are extremely proud to have been recognised for our involvement in this project.

The company is proud to employ land drillers, electricians, plumbers, civil engineers, heat pump engineers, graduates and fellows of the British Geological Survey.

We are members of the WDA, GSHPA, REA, EEA, NaCSBA and are ISO 9001, 14001 and MCS accredited.

**For more information, please visit:**  
**[www.hdservicesltd.co.uk](http://www.hdservicesltd.co.uk)**

With over 30 years experience, we offer bespoke solutions for the domestic market across the South East. Feasibility of a project can usually be determined with a site postcode.

**COVID-19 SAFE WORKING**

**AWARD WINNING RENEWABLE HEAT INSTALLATIONS**  
Open-Loop Ground Source Heat Pumps could meet all hot water and heating needs by utilising ground water as a heat source.  
Ideal for installation in new or self-builds.

**WATER SUPPLY & SOAKAWAY BOREHOLES & DRAINAGE SOLUTIONS**  
Independent water supply for irrigation or consumption\*  
Soakaway drainage fields and other drainage solutions  
\*subject to analysis and suitable filtration

**SEWAGE TREATMENT SYSTEMS**  
We can provide package plant or bespoke systems  
All systems are designed to meet the needs of individual clients and comply with strict discharge legislation.  
Servicing contracts are offered on all installations.

**H.D. services LTD**  
enquiries@thehdgroup.co.uk | 01494 792000 | [www.hdservicesltd.co.uk](http://www.hdservicesltd.co.uk)



# A great ConSept from Allerton



Allerton UK is a leading off mains drainage company, covering sales, servicing, commissioning, and repairs of all types of septic tanks, sewage treatment plants, sewage pump stations and soakaways. Working across the East Midlands and beyond, Allerton boasts a team of dedicated and experienced workers, all trained with British Water to ensure they are in the best position to properly assess a situation and correct it.

Established in 1974 by Jon Allerton, the company was originally concerned with draining farmers' fields. However, in the late 1980's, Allerton needed a new direction, and so began its work in off mains drainage.

As well as its sewage treatment plants and sewage pump stations which are made on the premises, Allerton also makes the ConSept. This converts septic tanks into sewage treatment plants, and can be fitted without excavations, apart from the shallow cable and air pipe trenches. This means customers can save around £3,000+VAT by avoiding excavators on site.



The ConSept uses the existing septic tank, removing the need to install a heavy plant or new tank, and it is quick to install to save time, money, and disruption. Moreover, it is manufactured using high grade composite materials and non-ferrous components, meaning the ConSept does not corrode. The equipment also has low maintenance costs, requiring servicing just once a year and desludging and emptying once every two years. Allerton will of course service and maintain all their own equipment, servicing, repairs, and surveys of sewage treatment plants is a major part of their work. The final effluent is discharged into a watercourse or soakaway, and installation and commissioning by Allerton's British Water Accredited engineers is included in the package.

Not only does Allerton install high quality units, the company also focuses on continual service of the equipment. This means that units Allerton has made and installed, of which there are over 1,200, are all still working efficiently across the country.

"In particular, we make sure everything is explained to the customer from the beginning and throughout the process, and we always do what we say we will," said Jon Allerton, Director.



"Minor problems are sorted out by engineers on site, and all the initial customer worries are dealt with in advance. We offer initial onsite advice, help with all paperwork such as planning and Environmental Agency permits, installation and ongoing servicing, including repairs. Every aspect of what we do is to please the customer."



In line with its ongoing expansion, Allerton has been taking on more staff and training them all to British Water standards. "I'm 78 soon, and the company has been

recently restructured and is now Allerton Bradley Ltd. Jason Bradley has been a large shareholder for several years, and has worked for the company for most of his life. His knowledge of all things sewage is vast, and at 36, he ensures the company can look forward to another 50 years of good service, and pleasing people!"

Allerton is continuing to expand, thanks to the real and immediate need of the company's services. Allerton's capabilities are helping people across the country save money, maintain their compliance with regulators, and ultimately protect the environment.

**For more information on everything Allerton does, head to the website or get in touch using the contact details below.**

**T 0800 328 5492**  
**T 01529 305757**  
**www.allertonuk.com**





**Allerton**  
SEWAGE & EFFLUENT TREATMENT SYSTEMS

**Freephone: 0800 328 5492**  
**Email: sales@allertonuk.com**  
**Website: www.allertonuk.com**

**The Dependable Choice in Drainage**

In rural areas without a mains drainage system, and where septic tanks will no longer reach environmental standards, Allerton can provide the ideal solution. Trading since 1974, Allerton are leading specialists in efficient treatment systems. They pride themselves on their individual, problem solving approach to dealing with alternative means of treating and disposing of raw sewage.

The Allerton ConSept converts your existing Septic Tank or Cesspit into a fully functioning Sewage Treatment Plant.

Servicing & Maintenance on a wide range of Sewage Treatment Plant and Pump Stations by BRITISH WATER ACCREDITED ENGINEERS.

The Diamond Sewage Treatment range is suitable for either individual homes or small population applications

When Gravity Drainage is not possible choose Allerton Pumping Stations for Sewage or Dirty Water



## Fasteners & Fixings News



**screwSHOP.co.uk**  
Screws • Fixings • Fasteners



- Screws & Fixings
- Builders Metalwork
- Ironmongery
- Silicones
- Sealants
- Specialist kitting and coating services

"My Dad says his fixings are the best and probably the UK's cheapest"



**NEXT DAY DELIVERY**  
**0121 559 8866**  
sales@screwshop.co.uk

N E Fasteners Ltd  
Waterfall Lane  
Trading Estate  
Cradley Heath B64 6PU