

LEISURE SOLUTIONS UK

ISSUE: 519 | Oct / Nov 2019
www.solutionspublishing.co.uk

• WHAT'S ON • CHARITY • PROPERTY FOR SALE • HOLIDAYS

The Best Premium Venue in Wirral

When it comes to picturesque, traditional settings nothing compares to the quaint, stunning views of Wirral's best kept secret- The Saddle Club. Radiating beauty from its 500 year old building and surrounding garden landscape, The Saddle Club is rich in history and was originally part of Lower Farm- which is featured within the Domesday Book in Preston.

The Saddle Club is based in Wirral, perfectly situated between Liverpool and North Wales. The Saddle Club has been opening its doors and welcoming visitors and locals for many years. Although being a member's only club, The Saddle Club is also open to the public and due to its member only status, it is able to stay open far longer than most pubs. In terms of rooms, The Saddle Club maintains a variety of room options including: five separate areas, a main members bar, snug, function room/bar/lounge area and garden. With a strong stance on preserving its original attire, The Saddle Club features a selection of traditional decorative elements including black beams with white daub walls to produce the 'Olde Worlde' feel.

One of the most unique experiences that



The Saddle Club offers is Anvil Wedding Ceremonies. Offering a civil ceremony over a blacksmiths anvil, The Saddle Club is the only venue in England to offer the traditional ceremony. "The venue itself is stunning; the wealth of beauty and history at The Saddle Club is just amazing. We are the only venue in England to offer the traditional anvil ceremony and we are one of the world's premium LGBTQ wedding venues." Paul Swift.

In keeping with its 'Olde Worlde' style, The Saddle Club also provides three types of wedding packages for its customers, featuring classic traditional options such as hog roasts, a vintage gift and card post box and an old style candy cart. The

Saddle Club designs its wedding packages to be affordable, unique and classic.

The Saddle Club is available for a variety of events and is able to facilitate parties, celebrations, wakes and funerals. Proving to be the perfect party host, The Saddle Club offers its customers a selection of party options to enhance any event, including: catering, DJ, karaoke, decorations and two fully stocked bars with a serving license until 2am. With affordable prices starting from week day hire at only £50, The Saddle Club is accessible for most budgets.

"There is something for everyone," Paul stated, "we offer room hires and weddings and also provide a fully stocked bar for locals and visitors with sports regularly on the TV." Being involved in supporting the community is important to The Saddle Club, and the venue regularly hosts charity events such as quiz nights and raffles, with a free of charge room hire to support them and the community.

For any more information, please see the details featured below.
T 0151 608 0881
www.saddle-club.co.uk

Sussex
Apartments
see on page 03



Richard A Rooke
see on page 06



Castle Holiday
Park
see on page 08



High quality roofline installations from Fasci clad Plastics

Fasci clad Plastics was established in 1984 by two brothers, and remains family run to this day. Based in Kent, the company specialises in the installation of PVC-UE fascias, soffits, cladding and bargeboards. Offering high quality and time tested materials, Fasci clad Plastics boasts 35 years of experience in the industry, and won the inaugural Roofline Installer of the Year award from Caradon Celuform in 1992.

The company's products and materials are adaptable to almost any configuration, being suitable for flat and pitched roof applications, and its pre-formed trims and corners require minimal cutting. Indeed, PVC-UE products are ideal maintenance free building products, being both rot and weather resistant, meaning that they never need re-painting over time.

Fasci clad Plastics' range of soft boards, fascia boards, cladding and bargeboards can make a world of difference to the



**FASCIACLAD
PLASTICS**

appearance of a property, and are supplied in a range of styles and colours to suit each application. What's more, the company can install a bird guard system on top of the fascia board to help prohibit the entry of birds and large insects below the eaves of profiled

tiles, as well as incorporating an over fascia ventilation system without the use of unsightly soffit vents.

The company is registered with Checkatrade.com, and has a wide array of glowing customer testimonials on its website, proof of its outstanding services. If you would like to find out more information on Fasci clad Plastics' full range of services, head to the website or get in touch using the contact details below.

T 01795 476141
mick@fasci cladplastics.co.uk
www.fasci cladplastics.co.uk

Proud members of
Checkatrade.com
Where reputation matters

SPA Training
see on page 19



Contents

03 SUSSEX APARTMENTS

Brighton & Eastbourne Apartments to rent.

06 RICHARD A ROOKE

Best buys on the Spanish Coast.

08 CASTLE HOLIDAY PARK

Holiday homes to buy or let.

19 SPA TRAINING

Training & Development for all

Featuring a wide variety of companies from across the UK and Sent via email to 100,000 UK Consumers Aged 18 +.

Editors comments

Hello & welcome to Leisure Solutions UK!

The team at Solutions UK has been working extremely hard to bring you an issue that is full of innovative and exhilarating companies and we are very excited to share their success and achievements with you.

We have searched the length and breadth of the UK to bring you some of the most ground-breaking innovations and this month we are overjoyed to be highlighting the activities of Saddle Club, Wedding Venue. See them on pages 1 and 13.

Secondly, we are featuring Fascia Clad and Plastics with 35 years experience in high quality roofline installations. For more information see page 1.

I hope you enjoy reading this issue of Leisure Solutions as much as we have enjoyed bringing it to you. Happy reading and we hope to see you for the next edition!

Ian Hayward

Editor

Leisure SOLUTIONS UK

For all advertising & sales enquiries please contact Ian Hayward
0121 241 8788



Available on the
App Store

FIND US ON:



Property News

Beautiful property set in idyllic French hamlet

Don't miss out on a fantastic property for sale in Les Buhots, Bosc-Mesnil, France.

Boasting a fantastic location, this property is the perfect hideaway, situated in an idyllic hamlet comprised of only a handful of houses surrounded by agriculture. Offering peace and tranquillity, the house is also only four miles away from Saint-Saëns, a pretty little village with a church, market and shops. It is in the heart of the valley of

La Varenne, a river which has shaped the village's landscape throughout its history. The house is also close to Neufchâtel-en-Bray, which is famous for its cheese.

What's more, the house is only 20 miles from Dieppe, the oldest seaside resort in France. This is perfect for fishing and sailing enthusiasts, offering breathtaking cliffs and a port, as well as a popular pebbled beach, a 15th-century castle, and the churches

of Saint-Jacques and Saint-Remi. Overlooking the beach is the Château-Musée de Dieppe, a museum housing a unique ivory collection and documenting the town's rich maritime history.

The property is also in an excellent location for keen walkers, with a large forest only two to three miles away, perfect



for dog walkers and amblers alike. Indeed, the Forest of Eawy (pronounced eavi) offers 7,200 hectares of beautiful forestland between the valleys of the Varenne and the Béthune, and is crossed by a 14km alley called Allée des Limousins. It is one of the biggest forests of the Pays de Bray in Normandy.

Outside, there is a medium to large sized garden, a garage, and a selection of mature trees, meaning residents can be self-sufficient for wood to feed the cosy wood burning stove in the living area. The house also has Gas LPG central heating, and is currently being partially rewired to bring the electrics up to the current legislation.

The current owners have been there for 15 years and have never sub-let the property to anyone, meaning it is in exceptional condition and has been very well looked after. If you are looking for a peaceful bolthole in Normandy's beautiful countryside, this is an unmissable opportunity to purchase a well-maintained property in the serene hamlet of Les Buhots.

If you would like to find out more information, contact Ed Sloper using the details below.

01480 891364
e.sloper334@btinternet.com

Modernised Rural Hideaway near to Neufchâtel en Bray Traditional construction extended and modernised.

This traditional Rural Hideaway near to Neufchâtel en Bray has been extensively extended and modernised. It has LPG central heating and a wood burning stove.

It comprises:

Three double bedrooms one with en-suite, a further family bathroom and utility room with additional toilet.

Two reception rooms plus mezzanine.

Large kitchen diner seating eight.

Well maintained, secure garden with garage and parking space.

Garden

There is secure, well maintained garden backing onto farmland with a large garage/store with four additional parking spaces.

Drainage

A new fosse septique, requiring no maintenance, has been recently installed to EC regulations.

Location

The nearest shops are 5 km away in the pretty village of St Saens and the market town of Neufchâtel is 15 km distant. The drive from the shuttle takes 1.75 hr.

FOR SALE €230,000

01480 891364

e.sloper334@btinternet.com



DETACHED TRADITIONAL CHARENTAISE HOUSE

Near Mirambeau 17150,
5 minutes from A10

Comfortable home and exciting project with huge possibilities!

Sympathetically renovated traditional Charentaise house of 250 Sq mtrs surrounded by vineyards with stunning views in a tranquil location, 4 large reception rooms, large kitchen, 3 double bedrooms all en-suite cloakroom, utility room and 2 large terraces, one with a 7 seat hot tub and the other totally sheltered with all day sun.

A comfortable and spacious house of character and class with many of its original features. Fully double glazed and insulated windows and insulated security shutters which makes this property very economical to run.

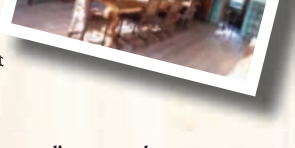
Additionally the substantial outbuildings of 350 sq mtrs would make a perfect renovation project with endless possibilities across the 1,700 square metre property which includes a very spacious interior, 6 to 8 car garage and large open barn - total plot size for the two properties is 3,300 sq mtrs.

The property is close to many attractions to keep one occupied including local supermarkets and the World's Best Wine - right on your doorstep!

€255,000

For more information on the property and surrounding area please contact

Brian Furzer on +33 62536 3065 or email on brianfurzer@hotmail.com



Beautiful & Traditional Charentaise House

If you've always dreamed of moving to the idyllic French countryside, this might just be the chance you've been waiting for.

Situated near the South West Coast of France, this property is in excellent condition and boasts an impressive expanse of living space. With three double bedrooms and four reception rooms, this is ideal for families, retirees and younger couples alike.

Make sure you don't miss out on purchasing this detached traditional Charentaise house, surrounded by scenic vineyards and spectacular views across the rolling hills towards the Gironde estuary, in an area that also boasts the second highest hours of sunshine in France, with its very own microclimate.

"The property is fully renovated and improved and is ready to move in to straight away," said Brian Furzer, owner of the property. "It's set apart from other houses, quite secluded, offering a peaceful and tranquil environment to take in the views."

There are also additional outbuildings in need of renovation, offering a great opportunity to create additional accommodation for family, friends or for rental purposes.

For more information on the property and surrounding area please contact
Brian Furzer on +33 62536 3065
Or email on brianfurzer@hotmail.com



Dream Holidays in Sussex and Madeira

Madeira Dream Holidays and Sussex Apartments are a range of holiday apartments and homes, provided by Richard Harris and Elaine, which offer a varied selection of property sizes and locations for a perfect holiday getaway in the UK and Portugal.

"We offer high standard, self-catering properties. All the properties are well equipped with all the amenities and we provide everything you would need and we make sure they are welcoming and comfortable." Richard Harris

In terms of the Sussex Apartments, Richard and Elaine provide properties in Eastbourne and Brighton. The Eastbourne property is located in Sovereign Harbour South Eastbourne, offering two bedrooms and bathrooms, sleeping up to five people. "Our Eastbourne property is right by the Harbour," Richard continued, "and offers perfect views from the property's balcony, overlooking all the boats." The property is close to the beach and provides ample amounts of local restaurants and shops to explore.

The Brighton property is a penthouse balcony apartment located on the seafront. Offering the perfect UK holiday escape, the property provides three bedrooms and sleeps between six to eight people. Engulfed in the vibrant surroundings of Brighton, the location offers something for everyone. From seaside days and family outings, to restaurants and a lively nightlife – Brighton is the perfect mix of an all-encompassing family getaway.

Situated on the island of Madeira, Richard and Elaine own three self-catering properties located at the heart of the main town in Funchal. Madeira is a charming holiday destination offering a plethora of activities for all ages. Some of the best features of Madeira include levada walks, waterfalls, sandy beaches and beautiful landscapes.



The first property Richard and Elaine purchased in Madeira was Quinta Elena in 2006. A beautiful villa, Quinta Elena is a spacious holiday villa offering four bedrooms and sleeping six to eight people. Elegantly attired, Quinta Elena maintains a traditional style with a modernised touch. Tranquil and picturesque, Quinta Elena provides an abundance of dream holiday aspects including views from its balcony of the town and a selection of restaurants, shops and coffee shops all nearby.

The other two properties in Madeira are; a luxury apartment that sleeps four people and a budget apartment that sleeps one. The luxury apartment is a modern apartment. Light and spacious, it makes the perfect holiday base to relax and enjoy Madeira. Providing a balcony to soak up those sunny rays and a swimming pool to immerse in, the luxury apartment is exactly that – luxury!

Available all year long, there is plenty to choose from and new places waiting to be explored at Richard and Elaine's properties. A new addition to the properties, recently Elaine has purchased a new holiday apartment in Rottingdean, Brighton.

For any more information please see the details below.
T 01273 302516
www.madeiradreamholidays.com
www.sussexapartments.co.uk

Modern and Charming Holiday Cottage

Cornwall has long been a popular UK holiday destination, thanks to its wild coastlines and breathtaking beaches. With a history steeped in mining, fishing, and farming, it is full of charming coastal villages that provide an idyllic retreat from the rush of everyday life.

One such village is Sennen Cove on Cornwall's west coast. Whilst being a popular destination, it manages to avoid being overcrowded with tourists, unlike other destinations in the area. Retaining the ambience of an old fishing village, it hosts a little harbour with its own fleet of fishing boats and has one of Cornwall's best stretches of golden sand. Whitesands beach is a popular spot with surfers and has its own local surfing club, and Sennen Cove beach and Gwenver beach are perfect for families and surfers alike. The ancient cove was once said to have been frequented by mermaids; these may have really been dolphins, which can still be seen in the crystal clear waters close to the coastline.

Nestled in this traditional Cornish village is Surf Cottage, an 18th-century former fisherman's cottage just two minutes' walk to Sennen Cove beach, half a mile from Land's End, and eight miles from Penzance. This fantastic property boasts a number of return customers, and it is easy to see why. With a garden which overlooks the beautiful coastline, the cottage is granite-built and is surrounded by high stone walls. The spacious living and dining area has stunning views of the coast and headlands, with a TV, DVD and CD player and a dining table that seats six. There are three large bedrooms which comfortably sleep five people, including a double room with an en-suite, a twin room with a wash basin, and a third room with a large single bed. There is also an extra power shower downstairs, along with a WC and hand basin.



The surrounding area boasts plenty of little shops and cafés, pubs, galleries and a selection of excellent restaurants for evenings out. If you fancy a meal at home, however, Surf Cottage has a well-equipped kitchen to satisfy all of your culinary needs during your time away, as well as WiFi access and private parking. During the winter, you can be sure to stay cosy and warm in front of the open fire, and in the summer you can enjoy a meal or barbeque on the stone terrace whilst soaking up the Cornish sun and dazzling sea views.

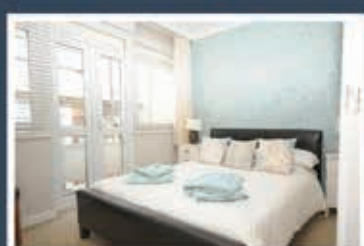
As well as being close to local shops, Surf Cottage has easy access to walks along the South West Coast Path, as well as being a short distance from a number of popular attractions including the Geevor Tin Mine, the Minack Theatre, St. Michael's Mount, the Levant Tin Mine, Tate St. Ives, and the Barbara Hepworth Museum.

A modernised and renovated property, Surf Cottage still manages to retain its traditional charm, and offers self-catering accommodation all year round. If you would like to take advantage of its stunning location and amenities, contact Cathy by using the details below.

Please contact Cathy on
Tel: 07979 241 421



Brighton & Eastbourne
Holiday apartments to rent.



19a Metropole Court, Penthouse Balcony Apartment, The Sunset Apartment.
Central seafront location

This is a luxury 3 bedroom penthouse balcony apartment with two bathrooms and two balconies and sits on top of the Metropole Hotel right on the seafront. The views to the West of Brighton are stunning.

There is car parking at £4 per hour under the Metropole Hotel.
 There is alternative car parking that is cheaper nearby.



16 San Juan Court in Sovereign Harbour South Eastbourne

Stunning sea and harbour views

Lovely luxury two bedroom/two bathroom balcony apartment with views right over the sea and outer harbour towards Pevensey, Bexhill and Hastings.

There is a secure under building dedicated car space available for small/medium cars.



Our Address:

Kipling Cottage, Rottingdean,
Sussex, BN2 7HA

0044 (0) 1273 302516 (UK)

0044 (0) 7956 662457 (UK mobile)

www.sussexapartments.co.uk

Plan an Autumn Break

Surfs Cottage, Sennen Cove

Granite built 16th Century Fisherman's Cottage, with surrounding high stone walls and mature garden overlooking stunning Sennen Beach and headland views. Just 2 minutes walk from Sennen sea shore. This small private home consists of 3 bedrooms, 1 en-suite. The large living and dining area overlooks the beach and headland.

A peaceful and tranquil cottage where you can enjoy a glass or two of wine on the lawn or stone terraced patios in the summer or the same in front of the large open fire in winter.

Set in beautiful surroundings with easy access to local shops as well as places such as St. Ives, Truro, Falmouth and Penzance. If you enjoy the many beaches, surfing and cliff top walks then this is for you with the added attraction of private parking.

Surf Cottage in Sennen Cove some 20 minutes' walk from Lands' End was one of the original buildings in Sennen Cove and was once a small thatched cottage surrounded by its own strawberry fields.



For more information and to book please contact

Email: cbksec@hotmail.co.uk or Tel: 07979 241 421



A Quiet Haven at Lavender Cottage

A tranquil piece of paradise at Lavender Cottage.

PPeace, comfort, and brilliance. If you are looking for somewhere to restore your batteries and revive your mind, we can provide the perfect home from home at Lavender Cottage. Located in Moelfre, in the North West of Wales, you will find our cosy lilac-walled cottage. We are ideal for family getaways, sleeping up to six people, as well as any pets you may wish to bring along with you.

The cottage consists of three bedrooms, and in the space, you will also find a modern kitchen, a beautiful bathroom, a luxurious lounge area, and a wonderful conservatory. Through the conservatory area, you will discover our self-contained back garden. This has plenty of space for any dogs to explore, consisting of two patio areas with lots of seating, as well as a big gas barbeque, which is ideal for the summer months. There is also opportunity to use part of the garage if required, with sufficient space to park.

A holiday cottage would not be complete without a great view, and from the property it is possible to see the surrounding sea. As a coastal holiday cottage, you can take in these splendid sea views from the upstairs roof garden, and breathe in that fresh air all year round.

We do everything in our power to accommodate our guests to have everything you could ask for. This includes lots of cooking equipment, as we recommend making use of the nearby shops, where you will find ample local produce to serve up your own meals. Enjoy the soft furnishings and various seating areas, whether indoors or outdoors.

We wish you the best stay possible at Lavender Cottage and hope you will come back again for another peaceful week in Anglesey. 3 Bedroom Holiday Cottage

Lavender Cottage, where the lilac walls give it the name, and the rest is unwritten and ready for you to fill it with family tales and new memories. It boasts brilliant views of the Irish Sea, and three bedrooms including a double, twin and single room. Additionally



offering a guest bed, there is enough room for a total of six people. There are heaters for cold weather, and all equipment you could ask for, whether a high chair or a travel cot.

The property features a full-sized curved bathtub and an electric shower, within a modern bathroom. It also has a tall electric towel radiator and underfloor heating to keep your cosy and relaxed.

The lounge area has ample space for you – family, friends, and furry pets all welcome. It has two sofas and a large TV set with plenty of DVDs to choose from. There's plenty of entertainment available at the Lavender Cottage, including books, games, and Wi-Fi access. For the colder months, there's also an electric fire, displaying a cosy log-effect.

It features an open dining area, joined onto the kitchen, as well as an accessible garden area, where you can eat out in summer months as you enjoy the sea view. There's plenty for the house chef to do, with a ceramic hob cooker, microwave, coffee machine, and a food processor. In addition, there are all the essential items, including a dishwasher, fridge-freeze, and washing machine.

On hot days with warm evenings, you can relax in the open conservatory and garden, with plenty of plants and shrubs to enjoy. There's also an upstairs roof garden, which is the perfect setting for outdoor dining, with the best views of the sea.



FOR MORE INFORMATION, PLEASE VISIT OUR WEBSITE, CALL OR EMAIL US

www.moelfreholidaycottage.co.uk

01248 410295 | info@gooddealmarketing.co.uk



The Waterfront Hotel

The hotel is set in Deal and is a short walk from Deal Railway Station. It is conveniently positioned for guests wanting to visit the area's popular attractions.

Waterfront Hotel Deal has 14 rooms, all of which are equipped with a range of amenities to ensure an enjoyable stay.

Those staying at Waterfront Hotel Deal can sit down to a unique dining experience at the on-site restaurant, conveniently situated for those who want to stay close by when looking for a bite to eat. Each evening, guests can enjoy a drink in the comfortable lounge bar.

A selection of cafes and restaurants are also found in close proximity to the property. The hotel is also moments from the areas well known nightlife destinations, plus Deal Castle is a 10 minute stroll away. It also provides a convenient base to discover Walmer and Dover.

29 Beach Street, Deal, Kent, CT14 6HY - United Kingdom

01304 374338 - Hotel Reservations

01304 447065 - Restaurant Reservations

07850462312 - Function Manager (Mark)

waterfrontdeal@gmail.com

www.waterfrontdeal.net



A warm & friendly welcome at Waterfront

Situated in the idyllic coastal town of Deal, Kent, The Waterfront Hotel boasts spectacular views onto the pier and across the English Channel, creating the perfect spot for you to relax and take in the coastline.

Built in 1720 and retaining many of its original features, The Waterfront Hotel offers a warm and friendly welcome for every guest. Indeed, the hotel is known for its excellent customer service and high quality food, and when combining this with its highly competitive prices, it's clear that The Waterfront Hotel is the number one choice when looking for a relaxing getaway.

The hotel offers a range of rooms, from single to family accommodation, meaning it can cater for any guest who wishes to experience The Waterfront Hotel's excellent hospitality, and there are discounts available for those who book directly with the hotel.

The restaurant offers a delicious carvery five nights a week, with breakfast every morning and Sunday lunches at the weekend. Its Pre-Christmas Parties menu has now also been released, for get-togethers with work, family or friends, so make sure you book early to avoid disappointment – the hotel's New Year's Eve and Christmas Day events are already fully booked, proof of the hotel's popularity and quality service.

A popular fishing spot, Deal offers sea fishing at the beach or lake fishing just a 10 minutes' drive from the hotel, and there are plenty of great walks along the seafront. The area is also highly popular with cyclists, thanks to it being a safe and relatively flat landscape.



There are numerous attractions and things to do nearby, including Deal Castle only five minutes' walk away and Walmer Castle just 25 minutes' walk. There is also a great shopping centre featuring many family-owned shops and cafes, with quality restaurants and pubs offering local 'real ales'.

Further afield, Sandwich is just 20 minutes' drive away, as is Dover Castle and Wingham Wildlife Park, and there are great deals available for Ferry crossings if you fancy a daytrip to France.

The Waterfront Hotel is also dog friendly, and there is plenty of car parking nearby. If you would like to find out more information, head to the website or get in touch using the contact details below.

T 01304 374338
waterfrontdeal@gmail.com
www.waterfrontdeal.net

A Home from Home

Situated in the scenic seaside village of Moelfre, on the east coast of Anglesey, North Wales, Lavender Cottage is the perfect place to stay for anyone wanting to get away from it all and relax in comfort, with all round stunning views. The cottage is run by Keith Roberts who first came to live in Moelfre in 1974 and who later saw the great potential the cottage had as a holiday home.

Lavender Cottage's owner Keith Roberts is a well-known figure in Moelfre as he has been associated with the village for over 40 years. Having run rented holiday accommodation for years with high repeat business, Keith understands exactly what the cottage's guests need.

As a friend of the previous owners, Keith had been familiar with Lavender Cottage and saw it as an ideal holiday home which is private, peaceful, comfortable and much larger than one would imagine from the outside. The cottage is a relatively modern property with a clean, smart feel which Keith has tried to soften further with his decorative choices.

Keith prides himself on offering more than just a place to stay and will actively go out of his way to ensure your comfort throughout your stay, and with visitors coming back time and time again, it's clear Keith knows what makes the perfect retreat.



Lavender Cottage is fully furnished catering for up to six guests, and of course pets are most welcome. With a modern kitchen and dining area, double, twin and guest beds available with a cosy lounge complete with armchairs and sofas, a 37 inch TV and DVD, Wi-Fi, books and games, Lavender Cottage truly is a home from home.

For more information and to book this picturesque and peaceful getaway, Keith would love to hear from you today.

Telephone: 01248 410295
Email: info@gooddealmarketing.co.uk
www.moelfreholidaycottage.co.uk



Property News





Chalet Blanc Châtel. Luxury Alpine Holidays

Just 90 minutes from Geneva airport by complimentary transfer, Chalet Blanc is ideally located to make the most of its beautiful surroundings and the vast Portes du Soleil ski domain. Far enough from Châtel centre to enjoy uninterrupted views and true peace and tranquillity but close enough to get to any of the lift stations and the town centre in only a few minutes. Chalet Blanc offers our guests the best of both worlds.

Five large, all en-suite bedrooms can sleep up to 14 guests in luxurious comfort whilst the enormous lounge with its roaring log fire, deep and comfy sofas and state of the art media system allows our guests the chance to find a quiet corner if they wish or to share a glass or two around the fire with friends and family.

There is a brand new hot-tub on the terrace with amazing views down the valley plus a sauna inside to help soothe away aching muscles after a hard day on the slopes. Our attention to detail will leave you wanting for nothing as our chefs serve you pre-dinner canapés with cocktails and champagne followed by a delicious gourmet 4-course dinner. Every other aspect of your holiday will be expertly taken care of by the team leaving you to enjoy the full potential of a holiday at Chalet Blanc.






Call: +33 6 76 37 40 91
Email: info@chalet-blanc.co.uk
www.chalet-blanc.co.uk
Chalet Blanc, Suvay
La Chapelle-D'Abondance,
Rhône-Alpes, France

RICHARD A ROOKE

"Best Buys On The Spanish Costas"

Multi Award-Winning International Property Consultant Established In Spain Since 1983



Established on the Costa Blanca for over 35 years, Richard A Rooke offers an extremely wide choice of meticulously selected properties at competitive prices.

Golf Opportunities – Special Offers

New and resale golfcourse properties for sale in various locations on the Costa Blanca and Costa Calida, as well as other regions. Of special note, Las Colinas Golf and Country Club, La Manga, Roda, Villamartin, and Lo Romero.

New Developments

Exceptional new-build opportunities already available, under construction, or built to order, in Mil Palmeras III, Torre de la Horadada and Las Colinas Golf Club.

PROPERTIES FOR SALE • GOLF PROPERTIES
NEW DEVELOPMENTS • INVESTMENTS • HOLIDAY RENTALS

Villas, townhouses, maisonettes, and apartments now for sale in one of the most popular locations at the moment on the Mediterranean coast.
Fine sandy beaches and all the amenities one could ask for.

CONTACT US NOW FOR INFORMATION.





Email: info@inmorichardrooke.com
www.villavalue.com | Tel: 0034 965 320 024
Avda. de Francia, Edif. Playa 9.1.2, Urb.
Mil Palmeras 03190 Pilar de la Horadada (Alicante), Spain

The perfect way to holiday!



Established in 2003 by Vivienne Wills-Crisp, Christian House and Church Swap (CHACS) is a UK based holiday organisation which enables house swaps between Christians across the UK, Europe and beyond.

"I always thought house swapping was a great way to holiday," Vivienne tells us, "and I had the idea that doing so with other Christians would enhance the experience."

"As a small company, we can offer a personal service, working directly with people to make sure that, as far as we can, they get what they want. We have no hidden costs, we just want people to have a wonderful holiday, where sometimes, firm friendships are made in our growing community of house swappers!"

Indeed, house swapping works as an excellent holiday option for everyone: single people, married couples, friends, and families. Instead of paying lots of money for holiday accommodation and then leaving your house empty while you are away, you can just swap homes with other Christians. Not only does it save you money, it gives you first-hand knowledge of the local area from your hosts, a well-loved home in which to stay, and the peace of mind that your home is being looked after by trusted members of CHACS.

"As well as gathering information about new members and their property, we also get in



touch with their church leader, just to ask them to verify their knowledge of them as members of their church, and this maintains everybody's peace of mind. It also means that when you go and stay in the other person's home, their local church will be ready to welcome if you decide to visit their church during your stay.

"In the last year, we have developed our website further and we are gradually getting more members in other countries; we have a handful of people living in Holland, several in other areas of Europe, and one or two in faraway countries like the US and Cambodia!"

Contact
T 01728 663583
houseswap@chacs.co.uk
www.chacs.co.uk



Christian House
and Church Swap

T: 01728 663 583
info@christianhouseandchurchswap.co.uk
www.christianhouseandchurchswap.co.uk

USING YOUR HOME....

Your house, however humble or grand, will provide a great holiday base for someone else. Your locality, so familiar to you, has lots to offer to someone new to the area.

SECURITY

There is a huge rise in house burglary when occupants are away from home. By house swapping you have automatic Christian house sitters! When people register with us, we contact their church leader. This is for everyone's peace of mind.

LOCAL COMMUNITY

Another great feature in its favour is that you will holiday in a local community. A local person, friend or neighbour, will have agreed to give you the key, check that you are okay and to deal with any queries. That person will also be able to give you up-to-date information about nearby amenities, local events, places to visit, best pubs, good restaurants and so on.

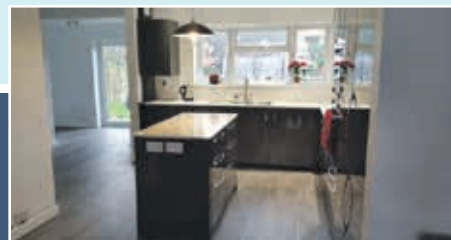
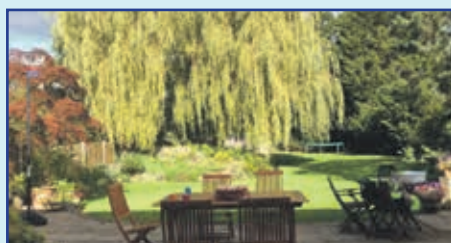
PETS AND PLANTS...

House swappers are usually happy to water the garden and indoor plants, and feed the cat and goldfish! Mutual dog owners are generally happy for the dogs to be included in the swap!

IT'S YOUR CHOICE!...

You get to choose from the descriptions of a variety of properties, all found in the online brochure. You pay us the admin fee only when your house swap is confirmed.

There is never any pressure on you to make a specific choice...the choice is yours!



EDWARD JAMES CARAVANS

Edward James Caravans, great deals on used caravans in Cranleigh

Here at Edward James Caravans we pride ourself upon our large range of outstanding caravans, first class customer service and also the best prices around,so please feel free to browse our stock list.

At Edward James Caravans, we stock a variety of different caravans, to make sure we have one for everyone,all of them different makes, sizes and we have caravans to fit any budget.

If you are looking for a second hand caravan in the Surrey,Sussex area then dont delay, call us today. In order to offer caravans to suit everyone we make sure that we update our stocklist regularly. It is therefore always worth giving us a call, even if you don't see what you are looking for on our website.

We offer advice on vehicles and vehicle maintenance and our friendly staff will go the extra mile to guarantee that you receive the advice and support you need.

At Edward James Caravans we dont just sell caravans, we do everything possible to get you on the road with your perfect vehicle. Why not come along to our dealership in Cranleigh? We look forward to meeting you!



For more information please get in touch on;

07717 148706

www.edwardjamescaravans.co.uk





BUSH NOOK
guest house

Gilsland, Cumbria, CA8 7AF
Tel: 01697 747 194

Book online

Situated in the heart of Hadrian's Wall country, Bush Nook is the perfect venue for a short break with friends or family.

A wonderful area for walking or cycling, you can explore the rich Roman era history of the area and then simply relax in the evening in the comfort of the hot tub with a glass of bubbly.

Offering a mixture of single, double and twin en-suite bedrooms, Bush Nook can accommodate large groups looking to create memories with a stylish country retreat.

If you're after bed and breakfast whilst exploring Hadrian's Wall, we can also cater for your needs.

Tel: 016977 47194 - www.bushnook.co.uk
E-Mail: info@bushnook.co.uk
Bush Nook, Upper Denton, Gilsland, Cumbria, CA8 7AF

Seeking somewhere a little different?

Sensational seascapes, lyrical landscapes, wild walks and magical moorland

There is nowhere quite like Ding Dong; it is unique in the true sense of the word! Bal Cottage, The Loft and The Cabin provide perfect bases for walking, wildlife observation, bird-watching, photography, astronomy or other outdoor activities, as well as being a secluded retreat for artists, authors or other creators, far from the bustle and stress of modern life. If you seek 'peace and quiet', you will find it here.

Not excessively modernised, the cottages are comfortable, well equipped and restful, there is no passing traffic and you may walk without limit in any direction.

Guests have occasionally walked to St Ives and back, returning tired but triumphant! And on a clear night the sky is spectacular, revealing the stars and planets without the light pollution which obscures the seeing in town and city skies.

Ding Dong Cottages - 26 years of Unique Holiday Accommodation - 1993 to 2019

Contact by telephone: UK 01736 36 36 77 Web: www.dingdongcottages.co.uk

World: (Your country's access code) + 44 1736 36 36 77




CASTLE
Holiday Park

Looking for a home in the South West?

Castle Holiday Park is a family run site in a sylvan setting, located in the heart of Cornwall.

The holiday park is a unique development offering modern caravans with gorgeous surroundings.

Much attention has been given to the arrangement of the site to preserve the rural mood and take maximum advantage of the pretty grounds. Castle Holiday Park was constructed alongside Goss Moor – an ancient heath and natural habitat for a variety of wildlife.

Castle Holiday Park is the perfect location for exploring Cornwall. Freedom to pursue your own interests is what caravan holidays are all about. Without the restrictions of a hotel and without set times for meals, you are truly able to unwind and relax, enjoying a carefree do-as-you-please vacation. We have a number of holiday homes for sale and to let, so take a look around and feel free to get in touch.

7 Miles of nature paths, cycle paths and is an idyllic location.

To make a booking, please visit the above site or get in touch by calling 01726 890420 or emailing enquiries@castleholidaypark.co.uk

www.castlecaravanpark.co.uk

[itchup.com](http://www.itchup.com)

HOLIDAY HOMES FOR SALE AND TO LET



RUTLAND FARM PARK

VOTED 2019 WINNERS RUTLAND & LEICESTERSHIRE BEST FAMILY ATTRACTION

Rutland Farm Park is a small, family-owned, working farm located in Rutland – England's smallest County.

The Farm Park has been in the family for five generations. On 10th September 2017 the Farm Park was once again reopened to the public having been closed since 2001.

We've got a range of friendly animals for you to see, from rabbits and guinea pigs, to sheep, horses and alpacas. Come and see some of the rare breeds as well.

We are focused on the conservation of these breeds, which no longer get the love and attention that they once used to. We want to change that.

You can also come and meet some of the animals that we have taken in and become a new home for.

Please contact 01572 722122
enquiries@rutlandfarmpark.co.uk
www.rutlandfarmpark.co.uk

[f](#) [t](#) [i](#) [o](#)

Muddy Stiletto's
IN LOVE WITH LOCAL
WINNER 2019
RUTLAND

A fun-filled day out with Rutland Farm Park

Located in the beautiful county of Rutland, Rutland Farm Park is a family run farm that offers guests a fun day out in the East Midlands.

The farm is located within the idyllic British countryside, situated on the remaining Noel estate that dates back to the Victorian era. Because of the property's age, the farm features a selection of Victorian farm buildings and structures, in addition to a range of exotic plants and blossoms, including rare Himalayan flowers and bamboo.

After a long closure that was caused by the infamous foot-and-mouth crisis in 2001, the

farm re-opened last year due to popular demand. The farm's owners, the Ball family, wanted to welcome guests back onto their premises to encourage wildlife conservation and educate groups on the natural world.

The Ball family work hard to conserve rare species of livestock, preserving an array of unusual and endangered poultry and cattle. The family encourage visitors to ask questions about the animals and interact with breeds to learn and develop their knowledge on conservation. A member of staff will always be on hand to answer any questions and delve deeper into the breed's history, making it the ideal location for schools to learn and have fun.



The Farm is home to a flock of Lincoln Longwool sheep, a breed that has been reared since medieval times and produces 35lbs of wool in only one clipping. The farm is also home to one of the largest Friesian Holstein bullocks in the world, towering above guests at an impressive height of 7ft. In addition to these fantastic beasts, the farm also houses a host of farmyard animals, including: ducks, geese, goats, pigs, alpacas, llamas and much more.

Once guests have explored the farmyard, they can enjoy a drink and a bite to eat in the farm's Tea Room. The Team Room is available to guests of the farm and to the general public, allowing everyone to enjoy a beverage and take in the gorgeous country scenery. The Tea Room can also accommodate groups of all sizes as the farm has generous on-site parking and plenty of indoor and outdoor tables.

It is important to note that all of the Tea Room's food is freshly prepared and caters to a variety of dietary requirements. This includes, but is not limited to: homemade cakes, ice creams, milkshakes, hot and cold drinks, baked potatoes and sandwiches. The Tea Room also organises a variety of events and occasions where the menu will change accordingly.

For any more information on the farm, or if you would like to view the farm's opening times, visit their website listed below. Alternatively, if you would like to book a table at the Tea Room or have any other specific enquires, telephone Rutland Farm Park on the number below.

T: +44 (0) 1572 722 122.

E: enquiries@rutlandfarmpark.co.uk

W: www.rutlandfarmpark.co.uk

Facebook: www.facebook.com/rutlandfarmpark



CASPE FISHING ON THE BANKS OF THE RIVER EBRO SPAIN

We offer:

- Guided with catering from £590 per person (bait not included)
- DIY fishing with boat £900 for 6 people (bait, tackle and licences not included)
- Catering can be arranged
- Boat and tackle rental available
- Airport transfers from Zaragoza and Reus available at extra cost
- All enquiries contact Bill Coxon

Tel: +34 679670087

Email: wjcoxon@msn.com

www.caspe-fishing.com



The Home for Rescued Pets and Exotic/Wild Animals

Borth Wild Animal Kingdom was established by Dean and Tracy Tweedy in May 2017. Situated in mid Wales, Borth Wild Animal Kingdom is a zoo and sanctuary for native and exotic animals. Ideally located by Borth railway station, the zoo is easily accessed and makes for the perfect family day out.

Dean and Tracy offer home to animals from zoos in which can no longer house them or exotic pets that are too challenging to keep. The zoo consists of many different animals, all with their own unique stories and houses 100 different species of animals, reptiles, birds and insects.

The zoo brings a new educational insight for visitors into the real life of these animals and provides an intimate animal experience. Enabling visitors to be up close to the animals, and learn and view wild/exotic animals. The zoo also facilitates reptile shows, animal interaction experiences, birthday parties and experiences to allow visitors to experience being a Zookeeper for a day.

Borth Wild Animal Kingdom has many facilities on-site to explore and enjoy. The café at Borth Wild Animal Kingdom provides a selection of delicious treats and hot and cold beverages. Offering a selection of enjoyable meals between 9am to 6pm, the café maintains a variety of food and drink options for all the family. There is also a ball pool and an outdoor play area for the children to enjoy.

The zoo also provides a well-stocked shop which is perfect for picking up mementos and souvenirs from the day. Some of the products include cuddly toys, seasonal goods and gifts.



Since the couple purchased the zoo they have made strides in renovating and modernising the zoo. With plans of expansion and creating bigger enclosures all in the works, Borth Wild Animal Kingdom are revolutionising their premises and are planning to turn the now café, into a larger shop once their newly renovated café is finished.

Delivering a better understanding of the animals, their habitats and also what can be done to help protect them. Dean and Tracy are extremely dedicated to the conservation of their animals and aim to provide the best habitat and haven for exotic animals and rescued pets. The zoo also supports and raises funds for the Chinko Project; a devoted project aimed at the protection of the wilderness in Central Africa.

Open 7 days a week between 9am and 6pm, come visit and learn/experience these beautiful animals. Borth Wild Animal Kingdom is looking forward to welcoming you.

For any more information please see the details below.
T 01970 871224
www.borthzoo.co.uk

Welcome to Borth Wild Animal Kingdom

On a little hill by the sea, overlooking the beautiful Ceredigion coastline, sits this haven for exotic animals and home for rescued pets.

Just a short walk from Borth railway station and the beach it's a place where you can get up close and personal to over 100 different species of animals, birds, reptiles and insects to learn about them and gain a better appreciation for all kinds of wildlife.

Join us for an intimate animal experience and a day to remember for all the family.

For information on planning your trip please contact us on;

01970 871224 | tracytweedy@hotmail.com

www.borthzoo.co.uk

All Aboard...with Haylings

Hayling Seaside Railway first started its journey as the East Hayling Light Railway, established by Bob Haddock the railway originally opened in 1988 and moved location in 2003.

Offering visitors a picturesque traditional journey aboard its trains, Hayling Seaside Railway takes passengers from sunny Beachlands, through the bustling Mengham Road to Eastoke Corner, where visitors can find a selection of England's famous and sought after fish & chip shops alongside arcades and other seaside amusements. Travelling through the seafront, the railway offers passengers the opportunity to take in the breath taking ocean views as well as rarely seen sights of the Isle of White.

Attracting visitors of all ages, Hayling Seaside Railway is the second biggest tourist attraction in Hayling and the feedback Hayling Seaside Railway has received over the years has been nothing short of perfect, with visitors praising the enjoyable trip, attractions and friendly service. Subsequently, Hayling Railway holds an excellent rating and is recommended on TripAdvisor.

A great day out for all the family, Hayling Seaside Railway provides something for everyone and hosts regular special events. The railway is a perfect destination for school trips and days out exploring, notably Hayling Seaside Railway is open every day during Hampshire school holidays and opens regularly on Wednesday, Saturday and Sunday.



A notable upcoming event for the railway is its Santa Special, a wholesome family event with a train journey from Eastoke Corner to Beachlands and back with a very special guest appearance – Father Christmas! Children will be able to visit Santa in his grotto (inside Eastoke Depot) and will receive a present. There are beverages and mince pies too all included for everyone to enjoy.

After over 30 years of dedicated service, love and care invested into the railway, Bob has decided it's time for his ownership of the tracks to come to an end. Dedicated to find the right owner for the railway, Bob wants to find an owner with the same passion, love and enthusiasm for the railway, who can bring new ideas and care for the railway just as much as he and his team of dedicated volunteers have. Bob is determined to carry on the joy, happiness and adventure of the railway in his absence, ensuring that the railway welcomes passengers for years to come.

For any more information please see the details below.
07775 696912
bob.haddock@hotmail.co.uk
https://haylingrailway.com/

Hayling Seaside Railway

The Friendly Little Train

On Hampshire's Treasured Island

The Hayling Seaside Railway runs the one mile between the popular funfair at Beachlands and Eastoke Corner with its shops, pubs and cafes. Running through areas of rare seaside plants and beside Hayling's renowned "Blue Flag" beaches, the railway also boasts some of the best views of the Isle of Wight.

Operating Dates	Fares
We will be open every Wednesday, Saturday & Sunday in 2019, plus every day during Hampshire School Holidays.	Family Return (2 adults & 2 children aged 3-15): £9.00
1st train from Eastoke (PO11 9HL) is at 10:40.	Adult Return (16+): £4.00
1st train from Beachlands (PO11 0AG) is at 11:00	Adult Single (16+): £3.00
	Concession Return: £3.00
	Concession Single: £2.00

For other times of the trains on the day please call

07775 696912

@haylingrailway

www.haylingrailway.com

A great day out with Sandwich River Bus Tours

The Sandwich River Bus Tour is located on the River Stour in Sandwich, Kent, and navigates the many waterways of the area, ferrying passengers so they may enjoy the sights and sounds of the river, the stunning picturesque countryside, and the town of Sandwich itself which is renowned for its medieval history. The town of Sandwich regularly brings tourists together from all over the world to view the many historic buildings dating back to the Anglo-Saxon times and the Roman invasions.

Founded in 1992 by the Highway Marine and then taken over by Captain Colin Carr in 1999, The Sandwich River Bus group holds a very high reputation for their exceptional scenic, historic and wildlife centred river boat trips.

Since becoming Harbour Master, Colin has worked out of an office that was first built back in 1338 and is a relic and attraction in itself. The River Bus has a variety of boats, including two 12-seaters and a 55-seater boat which was first built back in 1935.

With a diverse range of tours available, such as regular traditional boat trips, river tours from Sandwich to the Roman Fort at Richborough, or short rides staying near the town, guests will be treated to exploring the rich and scenic history of



the local town. In addition to history, passengers often seek out Colin's services to explore the many untouched pockets of wildlife along the English countryside. Seals are a huge draw for the company, with families, children, and more all seeking to see the seals in their natural watery habitat.

If you're looking for a family-friendly day out, with fascinating wildlife and a picturesque view of the British countryside, then be sure to get into contact with The Sandwich River Bus today, or visit the website for more information.

Contact

☎ 07958 376183

☎ 07503 928409

✉ sandriverbus@gmail.com

www.sandwichriverbus.co.uk



SANDWICH RIVERBUS

See Seals and other Wildlife

Travel the River Stour in Kent on the Sandwich Riverbus

Regular traditional type boat trips or river tours from Sandwich to the Roman Fort at Richbrough, short rides staying near the town.

Mini cruises up river can go as far as Fordwich. Weekly and in Summer daily trips down river towards the sea looking at the wildlife with a very good chance of seeing Seals. Our full cruising range covers more than half of the area that was once the Wantsum channel.

Very stable gentle progress boats
To speak to Cpt Colin call
07958376183 from UK.



Le Tonkinios Varnish & Flexidisc Sander & Grinder

The Flexidisc Sanding system has been on the market for 30 years yet still remains one of the most versatile.

The Flexidisc is a system based on an exciting 5" disc sander attachment which securely fits in your drill. A highly efficient flexible shaft eliminates vibration and gives full control when presented full face to the job surface, enabling fantastic finishes.

The fast rotation gets sanding completed in a fraction of the time compared to conventional sanders. This multi-purpose tool converts into a super-fine finishing sander, bench grinder, sharpener, partial angle grinder, polish applicator and polisher.

The 'slap-on peel-off' Velcro type discs are coated in a super-tough material called Corundum. The re-usable discs do the work of 100 conventional discs and can cope with a wide range of materials from soft plaster to iron. Because they generate little heat, they can even sand G.R.P. and old paint without melting the material.



Using the 'slap-on' system, polish is easily applied using the foam sponge, whilst a polishing cap completes the job. DA & BE Murkin are also the sole importers of Le Tonkinios Varnish, manufactured the traditional way, using Linseed oil, Tung oil & natural resins.

Slower drying, it shows no brushmarks and easily sinks into the timber. As such, it moves with the timber and doesn't crack or peel.

Contact

T +44 (0)1628 629892

mail@letonkinoisvarnish.uk

www.letonkinoisvarnish.uk

LE TONKINOIS VARNISH

LE TONKINOIS VARNISH IS A NATURAL OIL BASED YACHT VARNISH, USING A CHINESE FORMULA DATING BACK TWO OR THREE CENTURIES. AND WHAT A FORMULA!

IT REMOVES YOUR BRUSH-MARKS, BRINGS OUT THE NATURAL BEAUTY OF THE TIMBER, DOESN'T CRACK OR FLAKE OFF, AND IS PERMANENT SIMPLY ADD A FURTHER COAT EVERY FEW YEARS.

Telephone 01628 629892

mail@letonkinoisvarnish.uk

www.letonkinoisvarnish.co.uk



Unmatched Traditional English Fish and Chips Restaurant

Leisure Solutions is extremely privileged to present the Mermaid Fish Bar with their 42 Years of Excellence profile.

Situated in Leeds, West Yorkshire, the restaurant was initially established in the 1970s and has since progressed through the generations under the careful management of the Lodge family. Now, the restaurant is renowned as one of Britain's finest food eateries, having built up a strong reputation for their high quality, traditional fish and chips over the years.

The newly refurbished high quality fish & chip restaurant is located on the Britannia Road in Morley and has been recognised for its environmental efforts; its produce is ethically sourced and caught in line with the Conservation Society's sustainable fishing policies.

Now celebrating their 42nd anniversary in business, the team at the Mermaid Fish Restaurant is proud of its achievements and aims to continue to serve the public with high quality food for many more years to come.

In addition to their conventional fish and chips meals, the restaurant has an extensive menu with something suitable made in mind for everyone - including a senior's menu, children's menu and vegetarian dishes as well as everything from soups and starters to lighter bites, fried main courses, side orders, chef mains, desserts and homemade desserts and senior citizen specials.

To wash these mouth-watering meals down, the restaurant also serves a wide range of drinks, including beers and lagers, bottled beers and ciders, spirits and aperitifs, liqueurs, mixers, white wines, red wines, soft drinks, tea, coffee and many more.

The Senior Citizens specials are specifically designed with older customers in mind, taking on board their feedback and advice. Starters include breaded mushrooms in lightly seasoned breadcrumb with salad garnish and garlic dip, the home-made soup of the day, smoked haddock and prawn fishcake and more.

One of the most scintillating main courses is the lasagne, made with quality minced steak, tomato sauce, white sauce and pasta sheets topped with cheddar and mozzarella cheese.



Particularly popular foods are the breaded mushrooms, which are deliciously seasoned and served with a salad garnish & garlic dip, smoked haddock & prawn fishcakes and chicken Milanese (chicken breast wrapped in Parma ham accompanied with a creamy tomato, basil & mushroom based sauce).

There is also, of course, the Mermaid's famous fish & chips - customers can choose either Icelandic cod or haddock, both of which are cooked to perfection. Specific dishes of interest are the Cod Loin, lightly drizzled with lemon juice and served with fresh spinach, raisins & pine nuts, and the Basque-style chef special, which comes with mushrooms, red onions, peppers, tomatoes and olives.

We spoke to Sue Lodge who currently runs the Mermaid

Fish Bar and asked her how she felt about achieving 42 years of excellence, to which she said, "It's always nice to be acknowledged for good service and for our fantastic food offerings. It's a true testament for everything we have achieved and for all the hard-work we have put into our restaurant to provide our customers with nothing but the best fish and chips in the area."

We also asked Sue what differentiates the company from other fish and chips restaurants, to which she explained, "Because we only compensate fish and chips, no one can beat our quality. We specialise purely in fish and chips for a reason and this speciality has paid off for us, as we are recognised by customers as the best local chippy in the area."

To meet with contemporary customer demands, the Mermaid Fish Restaurant can guarantee their consumers that they also source the finest quality fish produce available in Yorkshire. What's more, the restaurant has undergone numerous refurbishments with a state of the art frying range, specialist cooking equipment and is under the food management of a highly skilled and professional head chef, who has travelled to Reykjavik to further his experience by working in Iceland's most famous seafood restaurant.

As if the food wasn't good enough, all the fish at the Mermaid Fish Restaurant is ethically sourced and they are proud supporters of sustainable fishing policies, keeping in line with the Marine Conservation Society. On top of that, they also source the finest quality produce from Yorkshire.

So, whether you fancy dining in or taking-out, the Mermaid Fish Bar is the perfect eatery ideal for catching up with friends or dining out with your family. Offering an array of fresh fish and other highly acclaimed dishes, you are sure to have an unforgettable experience in The Mermaid Fish Restaurant's relaxed and friendly atmosphere.

T +44 (0)113 253 5376

www.themermaidfishrestaurant.co.uk



The Mermaid Fish Restaurant

Why not visit our restaurant to experience the beauty and simplicity of fresh fish, cooked to perfection.

Try our famous fish and chips - choose either Icelandic cod or haddock, served with chunky chips and tartare sauce, or try one of our many additions to the new menu, cooked just as you like it.

At The Mermaid we only serve fish that is ethically sourced and we are proud to support sustainable fishing policies in line with the Marine Conservation Society, bringing you the freshest seafood with minimal impact on the environment.

Senior Citizens Menu available 7 days
Kids Eat Free on Thursday (T's&C's apply)
Coach Party Bookings Welcome

Gift Vouchers are available and can be used in the Restaurant or Takeaway

The mermaid only sells responsibly sourced fish from pristine waters

Tel 0113 2535376 | admin@themermaidfishrestaurant.co.uk
www.themermaidfishrestaurant.co.uk
Britannia Road, Morley, LS27 0BA



WELCOME TO
Mamma Scoop
VINTAGE ICE CREAM
TRICYCLE SERVICE
Ice cream Mamma's way!




If you're looking for an Italian ice cream treat for your guests – what could be better than traditional style gelato served by Mamma Scoop from a vintage inspired tricycle.

Mamma Scoop ensures all tastes are catered for. With a fantastic selection of sorbets and over twenty flavours of gelato including Mint Choc Chip and Tutti Frutti to modern day favourites such as Eaton Mess and Cookies.

This family inspired business hails from Sicily where some of the best, most tastiest Gelati originated many moons ago. It is perhaps fitting that Mamma Scoop's vintage style service evokes that feeling of a bygone era and offers a taste that has delighted ice cream lovers for generations...

Just like Mamma's!

Get in touch with us

07869 143250 01375 372215 | contact@mammascop.co.uk

Ice Cream Mamma's way!

Bring a taste of Sicily to your event with Mamma Scoop, offering traditional style gelato served from a vintage inspired tricycle.

Set up by Michelle five years ago, Mamma Scoop is based in Essex, working throughout the local area and travelling further afield on request. They cater for a vast range of events including weddings, corporate parties and other special occasions.

"My husband has a family ice cream business," Michelle explained. "I wanted my own small business that represented the family passion for ice cream – we have roots in Sicily, which is where the name 'Mamma' came from, I wanted this heritage to be an integral part of the business. Because I know ice cream so well, I wanted to share my knowledge and passion with other people and give them the chance to indulge in good quality Italian gelato!"

Mamma Scoop offers a delicious range of flavours of gelato and vegan friendly sorbet, with flavours ranging from traditional favourites such as mint choc chip and rum & raisin, to more modern flavours such as salted caramel, white chocolate honeycomb, and cookies.

Customers can enjoy an unlimited gelato service starting from an hour, depending on the guest numbers and requirements. You can choose six flavours from over 20 options on Mamma Scoop's flavour list. The ice creams can also be offered with a range of toppings, including sprinkles, marshmallows, chocolate sticks and four topping sauces.

"I always like to tailor the service to what the

customer likes. For one wedding, the groom loved liquorice, so I provided liquorice flavoured ice cream and set up a liquorice themed table for them. Upon request, and at no extra cost to the customer, I themed my service to tie in with their Alice in Wonderland event – whatever they're looking for I do my best to provide it!" Certainly, Mamma Scoop enjoys being a part of anyone's special occasion and understands the importance of detail to ensure your day is everything you want it to be, so don't hesitate to get in touch and discuss your needs.

If you would like to find out more information on how Mamma Scoop can bring delicious gelato to your event and delight your guests, get in touch via the website or using the contact details below.

T 01375 372215
mammascops@gmail.com
contact@mammascop.co.uk
www.mammascop.co.uk

Welcome to The Saddle Club

Civil Wedding's, & Wedding Reception's Birthday & Anniversaries, Company & Office Parties

The Saddle Club is truly one of Wirral's best kept secrets, tucked away at the top of Roman Road, Prenton.

The Saddle Club boasts a wide selection of refreshments, Traditional Real Ale, Cask Marked, a large beer garden, live televised sport and a weekly entertainment.

We are a Private Members Club (public welcome) with 2 Bars and a beautiful beer garden.

We look forward to welcoming you to The Saddle Club, Wirral.




Wedding Packages

The perfect bespoke wedding venue. A beautiful family run club. We can provide everything under one roof.

Wedding ceremony inc. civil partnerships, Wedding breakfasts, disco and entertainment.

With fantastic photo opportunities.

The Saddle Club have a fantastic full wedding package for 2019 call us on 0151 608 0881 for further details.

1. This is totally unique to The Saddle Club, we are the only Venue in England to perform a civil ceremony, over the Anvil.
2. The Full Wedding Package & Evening Reception. Also available as a Twilight package
3. Wedding Package & Evening Reception. Also available as a Twilight package

LET THE FUN BEGIN

Parties & Functions

With 2 bars and outside garden area the Saddle Club is the perfect venue to host your wedding reception, engagement party, birthday party, christening, baby shower, ect we can accommodate all functions.

Week day hire £50.00
Week night hire £60.00
Saturday day hire £60.00
Sunday day hire £75.00
Friday, Saturday night hire £150.00
All day room hire available POA.

DJ £150.00 + karaoke if requested no extra cost. Own DJ available, live bands ok.
Full Room dressing and decoration is available.
Catering starts from £6.00 per head see menus, own catering is available.
2 bars with a 2am license Friday and Saturdays.

Tel: 01516 080 881
www.saddle-club.co.uk

The Saddle Club

White Hyacinth

25 years of experience
Designing & Creating
Gorgeous Cakes for any event!




I have finally decided to 'give up the day job' and follow my passion for designing and creating gorgeous cakes. I have been making and decorating cakes for over 25 years and get so much reward from the pleasure on people's faces that I have made the move from hobby to career.

I cater for all occasions - weddings, christenings, birthdays, anniversaries and would be delighted to meet with you for an informal chat.

I work from home (all inspected and registered) so have very low overheads, and would welcome you there to discuss and plan your dream cake.

If you have any questions or would like to order a cake please call or text me on

07964-339-739

www.whitehyacinthcakes.co.uk

≤bark

★ **CERTIFICATE OF EXCELLENCE** ★

2019 WINNER

White Hyacinth Cake Design

Nicola Knight x CAKES

Welcome to Nicola Knight Cakes.

Based in Brockham, Surrey, we design and bake a range of bespoke cakes for all occasions, including birthday cakes, anniversary cakes, cakes for men, baby shower cakes, christening cakes and a range of amazing desserts.

Our website shows a range of uniquely designed cakes selected to inspire you and to give you ideas. If you need further inspiration contact us today to discuss your requirements.

Please see below for a selection of our cakes.

☎ 07795 833145
✉ nicola@nicolaknightcakes.co.uk
www.nicolaknightcakes.co.uk



DJ CRAIG ROYALE

WEDDINGS | BIRTHDAYS
ANY & ALL CELEBRATIONS!

DJ Craig Royale is a highly recommended and experienced dance floor filler! Catering for any and all celebrations, if you want your guests to have a great time, give DJ Royale a call!

☎: 07590056522 | 📱 @DJCraigRoyale



Expert catering services based in Swansea

If you're looking for high quality and flexible catering services for your event, the expert team at Justin's Catering is here to help. Established in June 2018, the company was born out of Owner Justin Hayward's impressive breadth of experience in the catering industry. He has worked for various food service companies for over 25 years, including nine and a half years as the Assistant Food and Beverage Manager at the prestigious Machynys Peninsula Golf and Country Club.

"We cater for all events and dietary needs, and adapt our menus to suit any taste or budget," Justin explained. "As well as our hot and cold buffets, we specialise in Hog Roasts, and have now expanded our machinery to include other meat roasts, such as lamb, beef and chicken."

Indeed, whether it's an anniversary, birthday, wedding, corporate party or any other celebratory event, Justin's Catering is guaranteed to provide only the highest quality foods and services to ensure your guests are kept happy and their stomachs are kept full. The company provides all plates and napkins, as well as a tea and coffee service if needed, and indulgent dessert and fruit platters for those with a sweet tooth.

As well as this mobile catering service, Justin's Catering took over The Mill Tearooms at the Gower Heritage Centre last year, offering delicious and locally sourced home cooked food. Guests can enjoy cream teas, Sunday lunches, and Gower Ale, cider and a range of confectionary.

Thanks to the success of Justin's Catering, Justin is continuing to expand his offering with another



recently established business. "I set up an additional business this year, called Hayward & Holding Caterers, offering bespoke menus and tailor made packages to suit any customer's event."

With a Five Star Food Hygiene rating from the Food Standards Agency and exceptional levels of experience, Justin's Catering is Swansea's number one choice for any catering needs. If you would like to find out more information, head to the website or Facebook pages and get in touch using the contact details below to get your free quote.

T 01792 371425
M 07897 201230
justin.jcltd@gmail.com
www.justinscateringltd.co.uk
Facebook: @justinscateringltd @haywardholding @themilltearoom

Justin's CATERING LTD



Mobile Catering in Swansea

Our owner Justin Hayward has been in catering for the last 25 years. We cater for all types of events, small or large, high-end functions including birthdays, weddings and christenings.

Throughout Justin's experience, he has worked at the Machynys Peninsula Golf & Country Club as an assistant food and beverage manager for over 9 and a half years. We also specialise in hog roasts catering and serve a 25-mile radius from Swansea.

- Anniversary Parties • Barbecues • Birthday Parties • Buffets
- Christening Parties • Christmas Parties • Corporate Events
- Mobile Catering • Outside Catering • Parties • Wedding Catering

At Justin's Catering Ltd, we offer personalised catering services to suit your preferences and budget. No matter what type of event you have planned, we have the experience to handle your dining needs. From snacks to complete meals, we can do it all.

For a free quote on our catering services, give us a call today.

Tel: 07897 201 230 | Email: info@justinscateringltd.co.uk
www.justinscateringltd.co.uk

-  Birthdays & Celebrations
-  Corporate or Business Events
-  Hot & cold food available
-  Christenings



Wedding Celebrant

Romantic, personal, and elegantly beautiful, words that describe your perfect ceremony.

Based in Petersfield on the borders of Hampshire, West Sussex and Surrey, I have easy access to a wide area including London and the Home counties.

As an independent celebrant with a love of crafting words and visuals I will work closely with you to turn your hopes and dreams for your wedding into a reality. I will listen to your love story and make that a central part of your personal ceremony

We can include any special customs or traditions, whether they are secular, spiritual or religious and I will help you choose words, poetry and music that build the story in this, your special celebration.

I can tailor any special elements to the style of your wedding including; hand-fasting, unity sand or candle ceremonies, wishing trees and ring warming. We can also create a totally unique element for you.

My promise to you is that I will craft a truly unique and personal ceremony for you and turn your dreams into reality.

Contact me Karen Betancourt-Jess for an informal chat about your plans

Phone: 07936 308559
Email: Karen@elegantboho.co.uk
www.elegantboho.co.uk






Solware: Run by Shooters for Shooters

Solware Ltd is a leading UK Gun Shop that sells all types of Air Weapons, Shotguns and Firearms from almost every supplier available nationwide. The registered firearm dealers supply all kinds of mechanisms from Air Rifle Pellet Guns, Air Pistols, Shot Guns, Cartridges, Air Gun Tuning, BB Guns, BB Gun Air Pistols, Gun Dog Training, 22 rimfire, Centrefire, 17 hmr Bullet Guns and more. Not only that, but they can also supply shooting accessories, catapults and other related items.

Now in their 20th year of trading, Solware Ltd is licenced for the sale of Air Weapons, Shotguns and Firearms. In addition to its online arm (www.solware.co.uk), the business also trades from a specialised store at the Tame Valley Business Centre in Tamworth, which provides a very friendly and professional service. Solware are also the only gun shop in the country that offers all types of guns from nearly all of the Manufactures available in the UK.

In order to guarantee customers nothing but satisfaction, the team at Solware Ltd work closely with all clients in order to supply them with the specific appliances to meet their needs. As a result of their excellent customer service and extensive collection of devices, Solware Ltd has been nominated as finalists for the last five years for the Gun Shop of The Year Award, and has gathered several five star ratings from customers



RIFLES



SHOTGUNS



AIR RIFLES & PISTOLS

on TrustPilot.com. With their wide array of guns, friendly service, high quality products, fantastic deals and speedy delivery services, Solware Ltd are renowned for nothing less than excellent customer service.

If you would like to find out more then don't hesitate to contact the team today, as they will be more than happy to help you with any queries you may have:

T 01827 215222
www.solware.co.uk



Mind, Body & Soul News

Rid Yourself Of Burnout With The Burnout Expert

Within this issue of Leisure Solutions we have selected Dr Veerle Van Tricht, Integrative Ophthalmologist, Bestselling Author, Life Coach, Holistic Medical Mentor and Creator of her successful Burnout Recovery Programme, for our Mind, Body and Soul profile.

With an unprecedented amount of experience within the medical profession, Dr V began her journey in 1993 where she became a Medical Doctor at the University of Leuven and later became an Ophthalmologist in 1997. From the beginning, Dr V's dedication to the wellbeing of others and her compassion for the human race was prominent, as she went on to volunteer for Doctors without Borders, delivering vital cataract surgery in rural villages throughout Africa and Australia between 1993 and 2014. Leading on from this, Dr V went on to become a Vitreoretinal Surgeon at one of the biggest university Hospitals in South Africa.

With the pressures and stress that combining parenthood with an ambitious professional career contains, Dr V felt overwhelmed and burnt out. Affecting all aspects of her life from physical to mental health, sleep, work performance as well as the relationship with her loving husband, Dr V was exhausted and frustrated at the lack of knowledge by all the doctors she consulted of how to recognise and treat Professional Burnout Syndrome, as it was not yet identified as a medical condition.

"After the birth of my first child I felt that my body was not the same. I couldn't walk as fast as before my pregnancy and I felt the burden of burnout." Dr V stated, "As an ambitious vitreoretinal surgeon I am a perfectionist and a high achiever and I was frustrated at not being the perfect wife, mother or doctor as I just didn't have enough energy and no time to connect with my newborn baby. I was exhausted and I had to realise that I cannot be perfect at everything all the time.

I decided to reinvent myself and I started to research ways to help myself and to raise awareness of the effects of burnout."

In 2005 Dr V became a qualified Reiki Master and began looking into alternative healing practices, leading her to become a certified Life Coach, Angel therapy and Tarot Card Reader. Through her 10 years of research into burnout she combined her understanding of medical, physical and spiritual healing into producing a programme to help your mind, body and soul heal from the feeling of burnout.

"The overwhelming pressures of maintaining a career while caring for your family can lead

people to neglect themselves physically, emotionally and ruin their relationships. My programme helps people recognise burnout and how to avoid it through a combination of spiritual, emotional and physical aspects."

Dr V's Burnout Resuscitation Programme is aimed at helping people understand and treat burnout, helping them to live a balanced life which allows them to take some time for themselves while optimising their time and energy for family life, relationships and work. Through her six module Burnout Resuscitation programme, Dr V delivers a step by step guide to rid you of burnout and to take control of your life. Dr V offers customers the ability to buy a variety of services including: mini burnout video course, the whole six module burnout resuscitation programme, 1-1 coaching with Dr V, word books and singular modules:

1. The Energy Booster,
2. Time Creator,
3. Love Shower,
4. A Balanced Life,
5. Find Your Life Purpose,
6. Connect With Your Higher Consciousness.

Spreading her valued experiences to a wider audience, Dr V has documented her spiritual experiences in the medical world through her autobiography My Surgeon Talks to Angels. Dr V created Angel School where the students learn to make their lives easy and joyful with the help of their Angels. You can attend Dr V's Angel Retreats in power places worldwide. Dr V's overall ambition is to contribute to the human race



by producing a more holistic and sustainable health system.


Another bestselling book that Dr V has co-authored to help people is Success Starts Today with Jack Canfield, which contains a collaboration of expert advice from a variety of leading entrepreneurs on achieving success.

For any more information please see the details below.

Book a complimentary Clarity Call with Dr V here: +44 (0)7900 842692
Get access to the Burnout Recovery Modules here: burnoutexpert.co.uk/shop

Get some Angel Inspiration here:

<https://mysurgeontalkstoangels.com>



Dr. Veerle Van Tricht
Creator of the Burnout Resuscitation Program

Reclaim Your Work - Life Balance.
Get More Time to Recharge.



Peaceful, stylish living at Chilton Park



Chilton Park is an exclusive residential park homes development, situated on the edge of the idyllic market town of Bridgwater in Somerset.

The park offers the perfect location for peaceful and relaxing retirement/semi-retirement living, with a rich selection of attractions nearby. "We're 15 minutes' walk from the town centre," explained Tony Fry, Park Manager. "This means there is easy access to supermarkets, doctors, vets and dentists, as well as the park maintaining a country feel thanks to its excellent location with plenty of beautiful scenery, walks and beaches nearby."

Indeed, Chilton Park has the best of both worlds, with a range of amenities nearby as well as being in easy reach of the picturesque Quantock Hills and the stunning scenery of Exmoor. Residents can also make use of nearby golf courses and there are the Chilton Lakes for fishing enthusiasts. For lovers of the coast, there are the beaches of nearby Burnham-on-Sea or Minehead, with Chilton Park being only 15 minutes away from the coast.

Residents can also enjoy a brand new leisure centre just across the road from the park, featuring a gym, exercise classes, sports hall, swimming pool and much more.

"These are beautiful homes based in the heart of Somerset, and the park should be finished



by the end of next year. We have 45 homes at the moment, most of which have been sold, and there will be 60 homes completed by September 2020. Since I took over in February 2018, I've done my best to implement more rapid changes to ensure the park is finished, meaning each time people come to have a look at the homes, there is something new to see."

Specialising in Omar park homes, Britain's premier park home and holiday lodge manufacturer, Chilton Park features properties in sizes ranging from 40' x 20' to 50' x 20', with most featuring two bedrooms with en-suite bathrooms.

If you would like to find out more information on Chilton Park's full range of properties and their features, head to the website or get in touch using the contact details below.

T 01278 426005
M 07858 404593
sales@chiltonpark.co.uk
www.chiltonpark.co.uk



An Ideal Location for Fishing, Golf, Walking and countless Leisure Activities.

Only a short journey to Bridgwater Splendid High Street Shopping Facilities.

Chilton Park is situated in a secure and convenient location that is never more than a short distance away from the diverse pleasures of the west country and surrounding country's abundant riches of leisure and social pursuits.

For further information please contact us at:

Chilton Park, Chilton Trinity, Bridgwater Somerset, TA6 3JW

Tel: 01278 426005 | Mobile: 07858 404593

Email: sales@chiltonpark.co.uk | Web: www.chiltonpark.co.uk

Mind, Body & Soul News

So good they named her twice

Based out of Leatherhead, Surrey, Palma Palmer is a life coach, public and motivational speaker, and confidence transformation coach. Driven by a passion for effecting positive change in people's lives and building up people's confidence so they can effect this change themselves, Palma is both well-endowed with experience and a genuine desire to help.

Like many, if not all of Palma's clients, she herself was subjected to a traumatic event in her life which was to have a huge impact on her. Staying true to her spirit, however, Palma did not let this trauma take over her life and rather has allowed the traumatic event to push her to help others more and more fervently than ever. At the very core of what Palma does is a genuine and intense desire to better the lives of others and make people happy. It's that simple.

I had the pleasure of speaking to Palma, who explained to me that being selfless and giving 100% to affirming positive change in people's lives is what she's always been passionate about. Indeed, Palma has been in the business of life coaching and confidence transformation coaching for over 25 years and it is a fair statement she has amassed a real knack for getting the best out of people, and if I said I wasn't motivated after our conversation, I'd be lying.

Though Palma has been honing her craft for over



25 years, it is has only been over the past two years she has taken the leap of faith, starting her own business and never looking back. Palma is proud to offer the following services to clients of all ages and backgrounds: Confidence Focus, Business and Personal Goals, Empowering and Transformation, and Customer Excellence and Upselling. The Confidence Focus course, centred on Inspiration, Motivation and Clarity is on a 1:1 basis and is comprised of five sessions. Business and Personal Goals is comprised of ten sessions and gives instant inspiration and motivation, while Empowering and Transformation and Customer Excellence and Upselling are both one day workshops.

Palma is a big believer in action, in taking action to make positive change in one's own life, and not just talking about making changes. All that Palmer asks from clients is 100% commitment. Combine that with Palma's powerful and inspirational coaching, and the client is almost guaranteed to see results.

To view Palma's range of services – online, face to face, and over the phone – visit her website or get in contact using the details below.

Contact
M 07919 947 590
palmaesteem@outlook.com
www.palmapalmer.com



Palma Palmer

LIFE COACH MENTOR PUBLIC SPEAKER

HEALTH & LIFE COACH CERTIFIED

How to Break Free and Create a Happy & Successful Life!

Confidence Transformation Coach

"Would you like lasting Confidence, I can help!"

- Physical / Health
- Personal / Social
- Work / Career
- Family
- Spiritual
- Financial
- Mind / Intellect
- Born To Win!



Collaboration With Fusion Leatherhead
Monthly meetings in the Boardroom.

20th March & 24th April 7-9pm

For more details contact:

Palma Palmer - 0791 994 7590

hello@palmapalmer.com

www.palmapalmer.com





The Elegant 3D Printing Solution

- Desktop DLP UV Printer
- Three versions with XY resolutions of 50, 75 or 100 microns
- Faster than laser printers
- High Definition and Biocompatible Resins
- Effortless Software and Wireless Driven
- All backed by laboratory testing, application advice and software



AWESOME
APPS

www.awe-apps.com
Call us on: 01242 370453

Awesome Apps Ltd, Cheltenham Road,
Painswick, Gloucestershire. GL6 6TU



SALES HOTLINE 01827 215 222
UNIT 1, TAME VALLEY BUSINESS CENTRE,
TAMWORTH B775BY



WE SUPPLY 53 BRANDS OF AIRGUNS WITH FULL RANGE OF ACCESSORIES



WE STOCK OVER 23 BRANDS OF SHOTGUNS
AS WELL AS CENTRE FIRE AND RIM RILES



Monday to Friday 9am - 5:30pm
Saturday 9am - 3:30pm
T: 01827 215 222 | F: 0870 011 9788

DEKO INSTANT FINANCE AVAILABLE
www.solware.co.uk



www.hampshirewineschool.com



Your tutor, Cecile Bergart, is a published Champagne and Wine Educator, a guest champagne expert for Champagne World Magazine, for Channel 4 'Superscrimmers', a regular guest speaker on BBC Radio Solent, as well as being an approved staff educator for Marks and Spencer. Trust us when we say that you will be in good hands to learn more about wine!

Our One Evening Wine Tastings provide the opportunity to try a tasting with no previous experience. It's also a great way to meet people who share your enjoyment of wine. The types of evenings available is varied and always changing, from Introductory Courses to Fine Wine Events - with plenty to choose from there is always something new to try. FROM ONLY £22.50



OUR BEST DEAL!

Book the 8-week World of Wine Course (one evening/week) covering all the main regions of the world for only £95! That's a saving of £25 against the cost of the same evenings booked separately. And if you can't make a particular evening you can easily pick it up again or receive a credit against any tasting. (Note - £10 is payable each night to cover wine, but that's still £5 off the

separate cost of some evenings!).

All our Wine Tastings are also available as Gift Vouchers for the perfect Gift (and our vouchers never expire!).



Please feel free to contact Cecile for any help or guidance on
02380 644350 or 07969 113382.

Traditional farmhouse for sale near the village of Mirambeau

Don't miss out on the opportunity to purchase this detached traditional Charentaise house, surrounded by scenic vineyards and spectacular views across the rolling hills towards the Gironde estuary. The area also boasts the second highest hours of sunshine in France, with its very own microclimate.

As a traditional farmhouse with two original fireplaces, the property features four large reception rooms, including a dining hall, day room and formal living room. Three of these rooms have wood burning stoves, and rustic wooden beams run throughout the downstairs areas, with panelled walls in the large dining hall.

The property also features a fully fitted kitchen with cottage style pine fronted cupboards and a central island, and there is a utility room and cloakroom downstairs. Upstairs, there are three double bedrooms each with their own en-suite shower room.

Outside, there are two large terraces and a garage which can fit up to eight cars, adjacent to an open barn for storing wood and a huge 3,300m² expanse of land. The property is fully double glazed and has aluminium insulated shutters for increased warmth and security.



There are also additional outbuildings in need of renovation. With a brand new roof, these buildings offer an excellent opportunity to create apartments or additional accommodation for family, friends or for rental.

"The property is fully renovated and improved and is ready to move in to straight away," said Brian Furzer. "It's set apart from other houses, quite secluded, offering a peaceful and tranquil environment to take in the views.

"The sea is about 40 minutes' drive away, and the estuary is only 10 minutes. The property is also only 5 minutes away from the A10, offering great accessibility to nearby towns and cities such as Bordeaux, Royan, Saintes, and Cognac." Indeed, there are plenty of shops and restaurants easily accessible via car, and numerous historical attractions within easy reach, Blaye Citadelle being one and many others relating to all historical periods; this area is rich with history, with a timeline featuring Richard the Lionheart, WWII and many other significant events.

For more information on the property and surrounding area please contact Brian Furzer on +33 62536 3065 or email on brianfurzer@hotmail.com



Flexible Training Provider

ENVIRONMENT

HEALTH

SAFETY

qualifications needed within the work place. "I think one of our main unique training features is our flexibility, as we provide a trainer who comes to the customer and delivers the training on-site at their premises. This has also allowed us to be extremely flexible in terms of working around the customer; we can deliver the training on days and times which work best for them." Jules.

All of the courses are provided by trainers with an approachable, patient and friendly teaching technique. The trainers are fully qualified in their specific fields and have years of experience in training, therefore they are fully equipped to provide the most effective, compliant and engaging training possible.

The courses that the trainers deliver are fully certified by recognised, well-established awarding bodies including Highfield Awarding Body for Compliance and Quasafe Awards. SPA Training also provides its own accredited courses.

For any more information or to contact them directly, please see the featured details below.

Contact:

T 03333 207136

www.spatraininguk.com



SPA Training was first established in 1995 and provides a range of training courses delivered by its network of over 300 trainers. Providing the most efficient training and advice, SPA Training delivers courses including: Food Safety, Health and Safety, First Aid, Personal Licence, Manual Handling, Risk Assessment, Fire Safety, COSHH and HACCP.

Delivering their training throughout the whole of the UK, SPA Training provides customers with the best quality training for a variety of groups and organisations including hotels, restaurants, pubs, schools and many more...

One of the most important courses for many establishments and companies is the First Aid training course. With new legislation coming into effect for schools and the law requiring a certified first aider within every workplace, many schools and companies are seeking effective, accredited training in First Aid. SPA Training provides employers with peace of mind that their employees are receiving the best quality training to achieve and maintain their first aid skills, ensuring that they are compliant to the required first aid skillset and achieve the right



ENVIRONMENT
HEALTH
SAFETY
SKILLS
KNOWLEDGE



03333 207 136

www.spatraininguk.com

Welcome to SPA Training (UK) Ltd

We have been established since 1995 and the key to our success is reliability, flexibility and quality of delivery. Our network of over 300+ trainers throughout the UK means we can deliver the perfect training course for your needs - whatever the scale or location. Certified courses: All courses are certificated by recognised awarding bodies such as Highfield Awarding Body for Compliance and Quasafe Awards. Recognition: As a Chartered Institute of Environmental Health (CIEH) Elite Premium Centre, SPA Training (UK) Ltd guarantees the highest standards of training for you.

We offer training courses for the following:

- ☞ Food Safety
- ☞ Health and Safety
- ☞ First Aid
- ☞ Personal Licence
- ☞ Manual Handling
- ☞ Risk Assessment
- ☞ Fire Safety
- ☞ COSHH
- ☞ HACCP

We work with a number of large businesses, including many that are leaders in their sectors and household names - for example Roadchef and Fullers Brewery. We are also the first choice for those seeking training in the public sector including councils, schools and colleges.

The key to our success has been reliability, flexibility and the quality of delivery allied to our network of over 300 professional trainers strategically placed across the country. Our dedicated trainers are all qualified in their respective fields and bring a wealth of experience to share from both commercial and public sectors.

JAYNE MARSHALL

VOCAL COACHING

Jayne Marshall is a dedicated and talented Tutor and cares equally for all her Students and Pupils.

She has the ability not only to discover voices where people hadn't quite realised the natural voice that already existed within them, but to engage in further producing the sound they already have into something quite extraordinary with time, patience and skill.

Jayne's structuring process for all her students has proved itself time and time again in order that they may accomplish a much better and easier passage of speaking and singing without causing any tiredness or exhaustion. To be able to project our voice and communicate in an unconstrained and totally effortless manner is one of the best gifts we can bestow upon ourselves, no matter which professional path we are following.....so why hesitate?....And as an added bonus should various and unusual vocal disorders present themselves such as Thyroid Dysfunction, Tongue Displacement, a Slight Stammer, etc. Jayne is well informed in vocal therapy and recovery.

Throughout her Tutoring Career, Jayne has received many and various testimonials from her Students and we thought it nice to include one for you here... It reads:
"Jayne is kind, nurturing, strong, passionate, insightful, creative, experienced, methodical, anecdotal, humorous and wise, you can be assured all her receive the utmost quality of teaching available. A bold claim perhaps but the knowledge Jayne has imparted and also the skills she has nurtured from me, with immense care and attention to detail is amazing. Jayne invigorates her students even at the inevitable Low Ebbs on their journey of discovering their Voices - The Voice being a Totally Personal Instrument. I know Jayne is able to guide anyone towards their desired goal from speech to singing and drama with kindness, and unrelenting passion and works tirelessly for us all, leading to the highs of singing and speaking freely with abandon. Jayne will always make you smile and who doesn't want a teacher like that."

Jayne also draws on her own experience as a professional singer and actress and knows only too well how important preparation and physical strength are necessary requirements for success.

She urges you....Go Forth...Make Contact....Follow your Heart....Enjoy...and most of all....Succeed.

Please visit **www.easyvocals.co.uk** or contact Jayne on **0208 399 9543** or **07773 018829**



Boett Blanket & Hood

The original Sweet-Itch rug, favoured worldwide as it really does work.

Also used as an **effective fly rug** by many owners. Recommended by Vets.

from £165.50 inc. VAT and UK next day delivery

Bio-Plus Equine Capsules

**SPECIALLY FORMULATED FOR
OPTIMUM IMMUNE SUPPORT.**

Trailed for 8 years, non steroidal, fully patented and proven to be safe, with 90% of horses showing an improvement.

Feed one a week throughout the year 3, 6 and 12 month packs from £75.00

ITCHY CAT OR DOG?

Capsules now available with great results.

From £30 for 3 months

The National Sweet Itch Centre
www.itchyhorse.co.uk

Sweet-Itch Advice

01352 840 333

01352 771718

Email: info@itchyhorse.co.uk

