

• WHAT'S ON • CHARITY • PROPERTY FOR SALE • HOLIDAYS

## Pet transport you can rely on

**L**eisure Solutions is awarding UK Dog Transport the **Commitment to Excellence Award** for providing a first class pet transport service. First founded in 2014, UK Dog Transport offers a safe, secure, door to door service for pet transport. Founded by Tim Dunton, Director of UK Dog Transport, Tim had an ambition of bringing his pet transport to a wider client base.

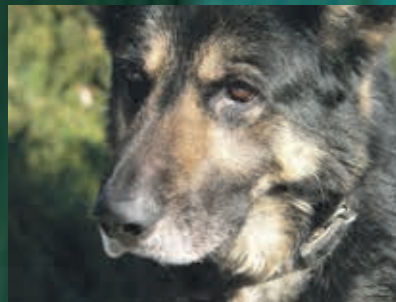
UK Dog Transport's services have taken the company from strength to strength, allowing them to expand, offering their services throughout the UK mainland, with regular trips to Scotland and South West England. The success of UK Dog Transport is credited to their safe, comfortable and reliable services, offering an exceptional VIP experience which uses the same transport systems as the RSPCA national fleet.

UK Dog Transport uses LinTran

Total Dog System transport boxes, which are ISO 9001 standard. They feature smartly made temperature controlled air conditioned pods which are designed to be cooler in the summer and warmer in the winter. UK Dog Transport takes safety of your pets extremely seriously, their pod systems have been tried and crash tested in real-life situations and all of their handlers are Dog first-aid trained, providing the highest standard of safety and care.

Another excellent quality service delivered by UK Dog Transport are the frequent check-ups they carry out throughout transporting your beloved pet, with regular checks for both water and comfort breaks.

Along with Man's Best-Friend services, they also offer pet transport for cats too, with a discounted rate for multiple dogs or cats going to



and from the same address.

UK Dog Transport services are clearly carried out with care and kindness, showing that they are truly a deserving winner of the Commitment to Excellence Award.

For any further information please get in contact or check out the website for more.

### Contact

**T +44 (0)1225 287431**

**www.ukdogtransport.co.uk**

**Le Tonkinois**  
see on page 6



**Kathton House**  
see on page 10



**AP Properties**  
see on page 11



**Castletown  
D Day Centre**  
see on page 12



**Castle Holiday  
Park**  
see on page 16



**Surfs Cotages**  
see on page 17



## PS MONOGRAMS



PS Monograms is based on Beer Road Seaton. Run by Dave and Mike, supplying polo shirts, fleece wear, T shirts, hoodies as well as and in addition to hi-vis safety clothing. In fact if you can wear it they can probably source it.

Most garments can be personalised with club or individual logo's which can be embroidered or printed. There are no minimum orders.

Prices based on the size and stitch count of logo's and quality of the garments chosen.

All clothing is sourced at reasonable prices from a variety of suppliers, or if you wish can be supplied by you. Please call in, email or phone to discuss your requirements as we are only too happy quote.



Please visit **www.psmonograms.co.uk**

Contact us on **01297 625050** or email us at  
**mike@psmonograms.co.uk**



# Contents

## 06 LE TONKINOIS VARNISH

Natural, oil based chinese formula varnish.

## 10 KATHTON HOUSE

No Ordinary Restaurant.  
No Ordinary Food.

## 11 AP PROPERTIES

Proficient & Affordable Property Care & Rental Service

## 12 CASTLETOWN D-DAY CENTRE

Relive the D Day experience

## 16 CASTLE HODAY PARK

Enjoy well-earned quality time with family & friends...

## 17 SURFS COTTAGES

Modern and Charming Holiday Cottage in Beautiful Sennen Cove

Featuring a wide variety of companies from across the UK and Sent via email to 100,000 UK Consumers Aged 18 +.

## Editors comments

Hello & welcome to Leisure Solutions UK!

The team at Solutions UK has been working extremely hard to bring you an issue that is full of innovative and exhilarating companies and we are very excited to share their success and achievements with you.

We have searched the length and breadth of the UK to bring you some of the most ground-breaking innovations and this month we are overjoyed to be highlighting the activities of Lady Toast Master.

Firstly, we would like to focus on the work of Waldegraves who this month features on our front cover!

Secondly, we are featuring Indigo Dyslexia Centre with 13 years experience in aiding dyslexics. For more information, turn to page 5, 6 & 28.

I hope you enjoy reading this issue of Leisure Solutions as much as we have enjoyed bringing it to you. Happy reading and we hope to see you for the next edition!

Ian Hayward

Editor

Leisure SOLUTIONS UK

For all advertising & sales enquiries  
please contact Ian Hayward  
0121 241 8788



FIND US ON:



## What's On

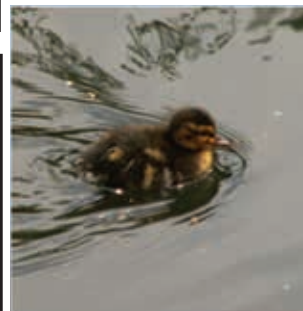


## SANDWICH RIVER BUS



*See Seals and other wildlife...*

*Travel the River Stour in Kent on the Sandwich River bus*



To Book by telephone:  
07958 376183 anytime  
[www.sandwichrb.co.uk](http://www.sandwichrb.co.uk)



## Folk at the Old Drum

Thursday Evenings, 8-00pm  
The Drum Inn, North Stanford, Ashford, Kent. TN25 6DN.

The Drum Inn is an early 18th century country pub in the heart of East Kent. It was originally frequented by soldiers from the Duke of Marlborough's Regiment. Later, Revenue Men used the pub as a base in the fight against Smugglers. Nowadays, The Drum is much quieter and welcomes everybody with fine beer, wine and food.

Guest artists visit generally once a month with other Thursdays being Singers' Nights. Details of upcoming guests can be found on our website.

Admission fees and membership subscription are very reasonably priced please visit [www.folkatthedrum.co.uk](http://www.folkatthedrum.co.uk) for more details.

Visitors, guests and members are always welcome to play, sing, listen or do all three! On Singers' Nights everyone who wishes, gets a spot of three songs/tunes to perform, but please keep it to about ten minutes! On Guest Nights there is a limited time for 'floor artists' so you will need to email or phone to get a spot.



For more information please contact us on;

Tel: 01797 320518 / 07890 292467 | Email: [david@plesbit.net](mailto:david@plesbit.net)

[www.folkatthedrum.co.uk](http://www.folkatthedrum.co.uk)





# FERNSBY HALL



## Fernsby Hall Tapestries

Tapestry Kits produced by Diana Fernsby from the original paintings of Catriona Hall

*Beautiful Paintings made into Amazing Tapestries*

Kits for each design, consisting of:

- The printed canvas
- The correct quantity of Appleton tapestry wools
- A photograph of the stitched kit
- Easy to follow instructions
- A needle • A helpline



For more information please get in touch on;

Tel: 01279 777 795 | Web: [www.fernshbyhall.com](http://www.fernshbyhall.com)

## Beautiful Bespoke Tapestry Kits from Fernsby Hall

Based in Furneux Pelham, Hertfordshire, Diana Fernsby began stitching tapestries from a young age after being taught by her Nanny. Her experience and passion grew over the years and this is evident in the stunning tapestry kits she now sells, which are based on the artwork of her lifelong friend, Catriona Hall.

We spoke to Diana about her inspiration for the business: "I watched as Catriona grew and developed her artwork, and I began to realise the paintings were perfect to turn into tapestries, and luckily she agreed." Indeed, during the 20 years that Diana spent organising charity art exhibitions, it was always Catriona's paintings that sold. Now, you can recreate these unique paintings yourself and display them in your home thanks to Diana's spectacular tapestry kits.

There are currently over 30 kits available, but this selection is ever-growing as Catriona paints new pictures to inspire the tapestries, making them anything but old-fashioned. Each kit contains a photograph of the original tapestry, instructions, tapestry wool, a needle, a printed canvas and a helpline if you get stuck. The background wool colours can also be modified to suit the customer's needs, as long as you send in a colour sample.

After you have completed your tapestry,



which typically takes between three to six months, Fernsby Hall offers a 'Making Up' service which turns your finished tapestry into a cushion or framed picture. This can be from as little as £40 depending on your fabric and edging choices. Furthermore, Diana offers lessons on how to stitch the kits and how to do the cross stitch and embroidery to embellish the piece. With the end result being so beautiful, it is easy to see how a complete beginner can become hooked.

Diana's wide-ranging customer base is a testament to the excellent quality of her kits, selling them as far away as Canada, Japan, Australia and the USA, as well as the whole of the UK. If you would like to find out more information, head to the website or use the contact details below.

**01279 777 795**  
**Kits@fernshbyhall.com**  
**[www.fernshbyhall.com](http://www.fernshbyhall.com)**

## McHenry's

**Selling Vivid Arts, tea lights  
personalised gifts  
& much more!**

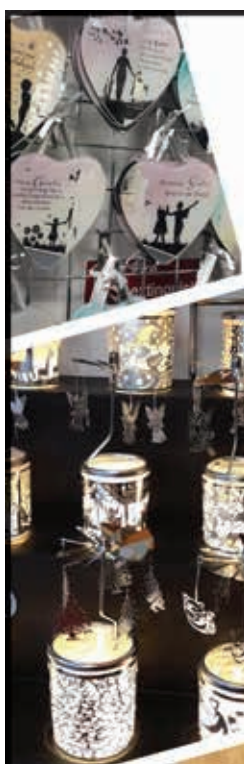
We are a newly opened gift shop at the top of Market street, Mansfield.  
We have had a stall on Mansfield Market for over a year as well as running the business online and shipping items all over the world.

The fantastic response we received from customers on our market stall led us to think about opening a shop in town. We found the perfect shop and here we are!  
Here at McHenry's we stock a huge range of Vivid Arts, beautiful gifts, Christmas decorations and personalised items which are all handcrafted by ourselves. Please let more people know we have opened by sharing our page and give us a like.  
Next time you're in Mansfield please pop in and say hello and have a little browse

Call 01623 422988

[info@mchenrysplace.com](mailto:info@mchenrysplace.com)

19 Market Street,  
Mansfield, Nottinghamshire



## McHenry's: Unique and Lovingly Hand-crafted Gifts, Arts and Crafts Supplies

Established in 2018, McHenry's Place is a specialist arts, crafts and gift shop, producing beautiful hand-made products for their shop in Mansfield, Nottingham. They started selling giftware at Mansfield Market and online in February 2017, initially specialising in laser engraving.

As their business expanded and their customer base grew, they branched out to a wider range of gifts and craft supplies, before opening their own shop less than two years later after overwhelming positive feedback from customers. As well as maintaining their online presence with their store and on marketplaces such as Etsy, they have also kept their market stall in Mansfield as a taster for the shop.

Because they are a family run business, McHenry's have tight control over their services and products. This means that they are incredibly passionate about what they do, guaranteeing that their gifts are made with love and care and to the highest quality. Their specialist laser engraved products are perfect for a personalised, meaningful gift for a loved one. In addition to these, they offer arts ornaments, metal signs, luxa lamps, tea lights and Christmas decorations, to name a few, all of which are exquisitely hand-made and unique.

As well as gifts, McHenry's is venturing into the wedding sector. Stunningly crafted in wood, they will offer invites, save the



dates and place settings, to help create a gorgeous look for your wedding day. They also have a personalised wooden Wedding Planner, made from 3.6mm oak veneer with a poplar wood backing, with 60 lined white pages inside for you to make plans for your big day. Buying such important products from a business that cares so much about what they do goes a long way in making a meaningful day even more special.

Over the next year, McHenry's are looking to open a second shop in Nottingham to reflect their growing custom. If you would like more information, feel free to contact Karen using the details below, or check out their Facebook and Etsy pages.

**01623 883281**  
**[karen@mchenrysplace.com](mailto:karen@mchenrysplace.com)**



# Bests Modeller

At Bests Modeller, you can buy a wide range of collectible models in their original boxes.

We have the best range of affordable Corgi bus models for anybody looking to complete their collection, with many limited-edition models among our extensive collection.

Our current collection of the best Corgi Bus Models includes many familiar from days gone by, such as the Bedford OB British Railways Coach. None of our die cast models have been opened and are still in their original packaging.

Our prices are extremely competitive and we can ship your model anywhere in the UK.



07814 751547  
www.bestsm modeller.co.uk

## THE REEL POSTER GALLERY ORIGINAL MOVIE POSTERS

Over 20 years experience dealing in the world's finest movie posters

The Reel Poster Gallery is the creation of Bruce Marchant, who owns and manages the business today.

Originally trained as a sculptor, Bruce started collecting in the late 1980s dealing with a handful of private clients. As many collectors start out, he never thought he'd deal. Within a year or two, however, he'd amassed a volume of posters and the business of selling began. Collecting is very addictive and emotionally driven. Bruce bought what he liked; either for the film title, or more often, for the design merits of the poster itself.

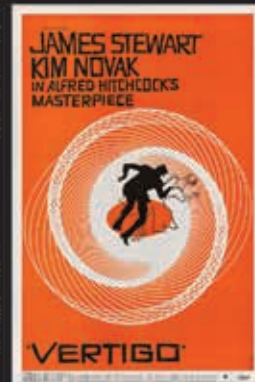
Bruce founded The Reel Poster Gallery in 1991.

Prior to this date, he had always seen the market potential at major auctions like Christies and Sotheby's; notably he observed the kinds of audience that these sales were attracting. Historically the market was very US led and to lesser extent French & Italian. Within a few years Bruce and The Gallery had put London on the map for serious collectors and film aficionados.

Over this period the gallery has been responsible for a dozen publications on film posters and related subjects – with over a million copies sold worldwide. Due to this success, Taschen bought the rights to The Gallery's 'Decade' series, however Bruce also produced 500 hardback limited editions, a handful of which remain available to purchase today.

After 15 years of establishing itself as a world leading destination for original posters, Bruce realized the majority of his loyal client base no longer needed to view before buying and were more than happy to buy on our recommendation or simply from a gallery catalogue. Therefore, we now operate by appointment only with a fantastic new website to support our activities.

Please visit our website [www.reelposter.com](http://www.reelposter.com)  
T +44(0)7970 846703 | Email: [info@reelposter.com](mailto:info@reelposter.com)



## Care News



### FREEDOM 4 U

Freedom 4 U is a new mobility scooters for sale shop in Walton's High Street, Essex.

We specialise in new AND used mobility scooters AND servicing too!

Our stock includes sales and hire models, ideal for those who are holidaying in the area.

We now stock various disability aids and accessories.

All trade enquiries welcomed.



Freedom 4 U Mobility Scooter New & Used Sales and Hire 01255 851151  
39 The Parade, Walton On The Naze, Essex. CO14 8AP

## carerstrust Care Support Workers



Carers Trust Thames are looking for friendly, practical and reliable candidates to provide care in client's homes and offer them support when out in public. The company would like to hear from individuals that would like to make a difference to the vulnerable and disabled.

Candidates should have a positive attitude, be assertive, have a thoughtful approach and be committed to the job role. Individuals must be comfortable carrying out personal and communication skills are essential. Individuals must be prepared to deal with a variety of age groups, disabilities and social & ethnic backgrounds.

The pay ranges from £8.73 to £13.00 dependant on the hours worked and qualifications owned, as well as public transport expenses covered and 40p per mile driven reimbursed. Previous care experienced in desirable but not essential as Carers Trust Thames provide a full induction programme and shadow training.

All successful candidates are required to work an average minimum of 15 hours a week and must have their own car/motorcycle.

All candidates are subject to a Disclosure and Barring Service (DBS) check and reference checks.

\*Pay rates include an allowance for time spent travelling between clients

Visit [www.carerstrustthames.org.uk/join-us](http://www.carerstrustthames.org.uk/join-us)  
to complete our application form or call 01908 260444

to find out if this role is right for you and an application pack will be sent out to you.



## Mind, Body and Soul: An Alternative Holistic Health Service

**E**stablished three years ago, Mel's Healing Sanctuary is a service created by Melanie Brown that offers holistic therapies, supporting people during difficult times and helping them to reconnect with loved ones.

Melanie's spiritual journey started well before she set up her Healing Sanctuary. From a young age, she could sense and see spirit around her, especially at night. However, this used to frighten her so she asked the spirit to leave her alone. As time went on, Melanie realised the spirit was always with her, guiding and helping her through her life, before she discovered that she had a gift for healing. After her step-mother passed away and her father became ill, she decided to enhance her spiritual gift so she could continue to contact them once they had passed. This led to her finding an inner circle of like-minded spiritualists within her local church, which she attended for five to six years.

Whilst in the circle, she heard about a year-long course at the Corinthian Church that taught people how to become a healer. She decided to enrol, and whilst studying she became good friends with the course leader who is still her mentor today. After this, she completed a probation year as a healer before becoming fully qualified, and has carried out another course to become a healer trainer so that she can teach her own classes and help others become healers too.

Once Melanie had qualified, she received numerous messages from other mediums saying that the spirit wanted her to stand on a platform and give messages. She ignored this, until one night at a church service in Portsmouth the medium didn't turn up. Due to Melanie being the only person in the congregation who was a



medium, Melanie ended up leading the service, which led to her training to be a spiritual minister through the Corinthian Church.

Melanie is now a fully qualified healer, medium and ordained minister. Working in the Chichester area within a ten mile radius, she specialises in card readings, psychic readings and energy healing. She offers her services on a one-to-one basis in the comfort

of the customer's home, or in her own residence, and if you head to her website you can read some of the many glowing testimonials from satisfied customers. Her Card Reading sessions take 20 minutes, where the client takes five cards from the pack which Melanie will then read, with help from her guides. She also offers an hour-long Mediumship Reading in which she connects with her friends and helpers in order to pass on information to the client from their loved ones, to help bring closure. Both Card Reading and Mediumship Reading can also be offered in an hour-long Combined Reading.

Furthermore, Mel's Healing Sanctuary offers a Card Reading Party. This is for a maximum of six people, and each person has a 30 minute private card reading session while the rest of the group enjoy food and refreshments. There is also a Couch Healing session, which involves looking at energy and relieving stress and bodily ailments, and a Chair Healing session, where the client can talk through their problems, worries, and concerns using energy to gather further information.

In the near future, Melanie will be offering hour-long meditation sessions to add to her extensive list of holistic therapies. If you would like to find out more information about everything Mel's Healing Sanctuary has to offer, head to their website or use the contact details below.

**07909808657**

**spiritualmel@outlook.com**

**www.melshealingsanctuary.co.uk**

# MEL'S HEALING SANCTUARY

## ALTERNATIVE MEDICINE PRACTITIONER

[www.mels-healing-sanctuary-medium.business.site](http://www.mels-healing-sanctuary-medium.business.site)

I am a fully qualified healer and medium with full public liability insurance,  
working within the Chichester area and within a 10 mile radius.

I offer holistic therapies specialising in card reading, psychic readings and energy healing,  
offering services on a 1:1 basis in the comfort of your own home or in my tranquil residence.

I also offer card reading parties and attend psychic events.

### SERVICES;

#### Card Reading

1:1 Card Reading (20mins)

1:1 Mediumship Reading (1hr)

1:1 Combined Reading (1hr)

#### Healing

1:1 Coach Healing Session (1hr)

1:1 Chair Healing Session (1hr)

#### Group Events

Card Reading Party (max 6 people)



For more information  
please contact me on;

**07909 808657**

8 Herald Drive

Chichester, PO19 8DE

Mon: 1:00 – 3:00 PM

Tue: Closed

Wed: 9:00 AM – 3:00 PM

Thu: 9:00 AM – 3:00 PM

Fri: 9:00 AM – 3:00 PM

Sat: 1:00 – 5:00 PM

Sun: Closed



### Le Tonkinios Varnish & Flexidisc Sander and Grinder

The Flexidisc Sanding system has been on the market for 30 years yet still remains one of the most versatile.

The Flexidisc is a system based on an exciting 5" disc sander attachment which securely fits in your drill. A highly efficient flexible shaft eliminates vibration and gives full control when presented full face to the job surface, enabling fantastic finishes.

The fast rotation gets sanding completed in a fraction of the time compared to conventional sanders. This multi-purpose tool converts into a super-fine finishing sander, bench grinder, sharpener, partial angle grinder, polish applicator and polisher.

The 'slap-on peel-off' Velcro type discs are coated in a super-tough material called Corundum. The re-usable discs do the work of 100 conventional discs and can cope with a wide range of materials from soft plaster to iron. Because they generate little heat,

they can even sand G.R.P. and old paint without melting the material.

Using the 'slap-on' system, polish is easily applied using the foam sponge, whilst a polishing cap completes the job. DA & BE Murkin are also the sole importers of Le Tonkinois Varnish, manufactured the traditional way, using Linseed oil, Tung oil & natural resins.

Slower drying, it shows no brushmarks and easily sinks into the timber. As such, it moves with the timber and doesn't crack or peel.

**Contact**  
**T +44 (0)1628 629892**  
**mail@letonkinoisvarnish.uk**  
**www.letonkinoisvarnish.uk**



### Llangollen Maelor Angling

07984 626158 or 01978 860012

Llangollen Maelor Angling offers fishing on over 10 miles of the River Dee in and around Llangollen. Situated in a world heritage site and area of outstanding natural beauty the location and fishing are stunning.

The River Dee has long been famous for Salmon, Sea trout, Brown trout and Grayling. Good coarse fishing for dace, chub, roach and pike can be found on our lower beat.

Detailed beat information is available on this site and our bailiffs are always happy to provide advice.

[www.llangollen-maelor-angling.com](http://www.llangollen-maelor-angling.com)

Day tickets are available buy online or from our ticket outlets.

For membership enquiries please contact

Derek Bithell on  
01978-860012

Or by e-mail  
[degseyllan@hotmail.co.uk](mailto:degseyllan@hotmail.co.uk)



### LE TONKINOIS VARNISH

LE TONKINOIS VARNISH IS A NATURAL OIL BASED YACHT VARNISH, USING A CHINESE FORMULA DATING BACK TWO OR THREE CENTURIES. AND WHAT A FORMULA! IT REMOVES YOUR BRUSH-MARKS, BRINGS OUT THE NATURAL BEAUTY OF THE TIMBER, DOESN'T CRACK OR FLAKE OFF, AND IS PERMANENT – SIMPLY ADD A FURTHER COAT EVERY FEW YEARS.

Telephone 01628 629892  
[www.letonkinoisvarnish.co.uk](http://www.letonkinoisvarnish.co.uk)  
[mail@letonkinoisvarnish.uk](mailto:mail@letonkinoisvarnish.uk)



## Beautiful handwritten signs... ...that suit any occasion

**H**annah Matthews is a brilliant artist who crafts stunning hand-written signs that are made to order. Such astounding designs are ideal for a range of celebratory occasions, including weddings, birthday parties and anniversaries.

Hannah's passion for artistry stemmed from her childhood, allowing her to complete a foundation course in Art and Design at Plymouth College before graduating from Bath Spa University with a BA (Hons) in Graphic Design and Illustration. After her graduation, Hannah wanted to pursue her artistic dream and moved to London where she became a professional signwriter, developing her skills before setting up her own business in 2015.

Since then, Hannah's company, Signwriting by Hannah, has leapt from strength to strength, allowing Hannah to network with clients to undertake a range of artistic projects.

These projects have ranged from canal boat signage, pet sketches and lifelike portrait sketches, both of which are incredibly realistic and capture the likeness of the sitter. However, Hannah also enjoys crafting bespoke signage for weddings, taking a client's initial idea and transforming it into a reality. She works closely alongside couples to design and craft the exact wording required for their special day.

Hannah is proud to offer her clients a range of wedding services. This includes, but is not limited to: Large entrance chalkboards with a handwritten message that welcomes guests into the service, boards that outline the day of service and



directional signs that allow guests to easily navigate their way to the wedding venue.

If you would like to view Hannah's extensive artistic portfolio, which includes both her sign and portrait work, feel free to check out her website below. Alternatively, if you would like to get in touch with Hannah to request any of her artistic services, call her on the number below.

**Please contact us on;**

**T +44 (0)7762 023700**

**info@signwritingbyhannah.com**  
**www.signwritingbyhannah.com**

# Wedding SIGNS by Hannah

BESPOKE HANDMADE SIGNAGE  
PERSONALISED FOR YOUR SPECIAL DAY

[WWW.SIGNWRITINGBYHANNAH.COM](http://WWW.SIGNWRITINGBYHANNAH.COM)  
Instagram: @SIGNWRITINGBYHANNAH  
Facebook: FB.COM/SIGNWRITINGBYHANNAH  
Tel: +44(0)7762 023 700  
Email: INFO@SIGNWRITINGBYHANNAH.COM

## Keepsakes Wedding Videography

*Capturing those treasured moments*



*Do you want to capture your big day on video?*

As it is such an important occasion, you want your Wedding Video to be just perfect, so your Wedding memories are not ruined by poor camera work. If you are in the Kent area or anywhere in the South East, then you are in luck.

We are a fresh company providing our professional services in Maidstone as well as throughout Kent and the South East areas. Our work covers everything between smaller local projects to very large Wedding Ceremonies.

Of course, Wedding photographs can make you smile as they bring back the memories, but they can lack substance on their own. With a wedding film you can capture the action, laughs, sounds and music allowing you to relive your wedding day over and over again.

Keepsakes Wedding Videography understand just how important your wedding day is and so we aim every time to provide our clients with a beautifully edited, High Definition film that will capture the occasion for you and your family for years to come.

Give us a call on 07738 093398

Or send us an email [keepsakesweddingvideo@gmail.com](mailto:keepsakesweddingvideo@gmail.com)

*We are always happy to answer any questions  
you have about planning your Big Day.*



## Butterflies for Occasions™

*Creating beautiful & memorable moments*

Each butterfly is in its own special release envelope or box, the release boxes are contained in a White or Ivory box decorated with an organza ribbon to match your chosen colour theme for your wedding or special event.

They are distributed to your guests and after a few words or perhaps a meaningful poem to compliment your occasion; the butterflies are released simultaneously to provide a delightful display.

For the Collective Butterfly Release the Butterflies are released all together, this provides a stunning display of Butterflies when you open the release box. The Boxes are white or Ivory and can be decorated with a coloured organza ribbon to match your Bridal Colour scheme.

For more information please contact:

**Mrs Angeline Hayden**  
Tel: 075 826 01462  
Email: [info@butterfliesforoccasions.co.uk](mailto:info@butterfliesforoccasions.co.uk)  
Website: [www.butterfliesforoccasions.co.uk](http://www.butterfliesforoccasions.co.uk)



## HAT-TRICKS FASHION ACCESSORIES

Hats, Handbags & Fascinators to make any woman feel fabulous!

Quality assured.



Please call or email for more details.

jeanmpharo@tiscali.co.uk

**07889 336226**

13 Westbrook Walk, Alton, Hampshire GU34 1HZ

## WAYNESWORLD EXPERIENCE

WEDDING SINGER & MUSIC MAN  
HOSTING THE ALL TIME FAVOURITES

As a high quality entertainer with over 20 years+ experience, I provide entertainment services for all manner of functions and events. I will provide you with an unique entertainment package tailored to your individual needs and to suit the occasion.



**www.waynesworldexperience.co.uk**

Tel 07788 543502 • Email waynesworld02@outlook.com

### Brian O'Leary Magician

**Weddings, Parties and More**

Whether it's a wedding, a special birthday party or an event that you want to make a little more unique. Find out more about what Brian can do for you. There's no set formula for how to present magic at your event. You do not need to be limited to one type of magical performance. We can help plan out your wedding, party or event so that you get the best experience for you and your guests.

**Mix & Mingle**

As your guests gather, why not entertain them with some mind-blowing magic. This is as close as magic gets: small groups of people with the magic happening right under their noses.

**Table Magic**

You've had your meal, the conversation has died down - what now? In this format, Brian will come to your table and entertain you and your guests.

**Parlour Shows**

This is close, but not too close! The parlour show format allows your guests to see a professional magic show in an intimate environment. Great for parties and to get everyone involved.

**Your Event, Your Way**

This is just a selection - you don't have to choose just one type of performance. Contact us now to find out what we can do for you.

Contact us now and we will help you plan your event.  
Office: 020 8521 9626 | Mobile: 07772 920 322  
brian@brianolearymagic.co.uk

### Owen Strickland

MAGICIAN

WEST MIDLANDS WEDDING MAGICIAN  
CLOSE UP AND TABLE MAGIC

*Winner of the 2017 and 2018 Regional Wedding Awards!*

**Bringing the WOW! to your special event**

The ideal entertainment for your wedding guests during the Drinks Reception, Wedding Breakfast and Evening.

Everyone is talking about Close Up/ Street Magic, made even more popular by TV shows by Dynamo, David Blaine and Penn and Teller. Walsall based Owen Strickland, specialises in this kind of magic, making it the perfect accompaniment to your event.

Owen performs his style of magic at Weddings, Private Parties, Birthday Celebrations, Cocktail Parties, Garden Parties, BBQs, Charity Balls and House Parties. Indeed, wherever there are people, Owen can perform!!

Get in touch for more information..

07742 263000  
owen@owenstrickland.co.uk



**Unit 2, Evergreen Field,  
Pincet Lane, North Kilworth,  
Lutterworth, LE17 6NE**

**TRY OUR CAFÉ IN  
NORTH KILWORTH, LEICESTERSHIRE**

At Albert's Café we strive to offer you a friendly, homely experience in North Kilworth, Leicestershire. We have everything you need, from snacks to whole afternoon tea options.

The café sits alongside the larger shop, making Albert's Archives Vintage and Loved the best place to spend time. Visit us today to see what the fuss is about.

**WHAT WE OFFER**

We offer all sorts of things to keep you refreshed like:

- Teas
- Coffees
- Soft Drinks
- Scones
- Cakes
- Pukka Pies™

We only use locally-sourced meat from local butchers for our food.

You're also able to experience one of our delicious Sunday lunches with all of the trimmings.

We advise booking a table for Sunday lunches as it does get very busy. Other breakfasts, lunches, and evening meals are all available throughout the week.

We have lots of specials each week, so come to us to see what's happening!

**AFTERNOON TEAS**

This is a great idea for a birthday, anniversary, or just a general gift for a friend or family member. Treat that special someone to an afternoon tea experience, with sandwiches, teas, cakes, and much more provided by experts. We cater to all dietary requirements, assuming we have a few days' notice. Contact us for more details or if you would like to book.

**BOOKING**

Depending on your preference, you're able to book a table with us over the phone, or alternatively just walk in. We'd always advise booking a table to avoid disappointment.

**Tel: 01858 882186**  
**Email: [info@albertsarchives.co.uk](mailto:info@albertsarchives.co.uk)**





## Home-cooked Meals & Exquisite Afternoon Teas in Beautiful North Kilworth

Set in the rural village of North Kilworth, Albert's Café and Tea Room is a friendly and cosy venue offering a fantastic range of food and refreshments. It is named after a vintage rocking horse, which was discovered in a skip by the owner of the business Valerie Martin, and Albert now has pride of place at the setting after being fully restored.

All of their meals are cooked on the premises, using locally sourced meat from local butchers. As well as offering breakfasts, lunches and evening meals throughout the week, they also sell home-made cakes and scones which can be enjoyed with coffee, tea and a selection of soft drinks.

If you fancy a treat, the café provides Sunday lunches with all the trimmings from 1:30pm, which prove very popular so it is worth booking a table if you intend to sample their delicious meals. For a more special occasion, Albert's Café and Tearooms also serve Afternoon Teas. These are a fantastic gift for birthdays, anniversaries and baby showers, and contain a selection of sandwiches, cakes and teas which can be modified for all

dietary requirements.

These need to be booked with at least three days' notice to ensure you receive the best experience possible.

The café sits alongside the larger vintage and antique shop Albert's Archives, which sells high quality collectibles and unique products to a wide range of customers. After enjoying refreshments in the café, it is definitely worth browsing the shop's extensive collection of unusual and one-off items where you are sure to find something that catches your eye.

Open every day from 10am-4pm and seating between 30 and 40 people, Albert's Café and Tearoom can cater for group bookings as well as small get-togethers. Although they do take walk-ins, it is worth booking a table in advance to avoid disappointment. For more information, head to their website or use the contact details below.

**01858 882186**  
**[info@albertsarchives.co.uk](mailto:info@albertsarchives.co.uk)**  
**[www.albertsarchives.co.uk](http://www.albertsarchives.co.uk)**



**The Mermaid Fish Restaurant**

*Why not visit our restaurant to experience the beauty and simplicity of fresh fish, cooked to perfection.*

*Try our famous fish and chips – choose either Icelandic cod or haddock, served with chunky chips and tartare sauce, or try one of our many additions to the new menu, cooked just as you like it.*

*At The Mermaid we only serve fish that is ethically sourced and we are proud to support sustainable fishing policies in line with the Marine Conservation Society, bringing you the freshest seafood with minimal impact on the environment.*

*Senior Citizens Menu available 7 days  
Kids Eat Free on Thursday (T's&C's apply)  
Coach Party Bookings Welcome*

*Gift Vouchers are available and can be used in the Restaurant or Takeaway*

*The mermaid only sells responsibly sourced fish from pristine waters*

**Tel 0113 2535376**  
**[admin@themermaidfishrestaurant.co.uk](mailto:admin@themermaidfishrestaurant.co.uk)**  
**[www.themermaidfishrestaurant.co.uk](http://www.themermaidfishrestaurant.co.uk)**  
**Britannia Road, Morley, LS27 0BA**





## Unmatched Traditional English Fish & Chips Restaurant

Leisure Solutions is privileged to present the Mermaid Fish Bar with their 42 Years of Excellence profile.

Situated in Leeds, West Yorkshire, the restaurant was established in the 1970s and has since progressed through the generations under the careful management of the Lodge family. Now, the restaurant is renowned as one of Britain's finest food eateries, having built up a strong reputation for their high quality, traditional fish and chips over the years. The newly refurbished high quality fish & chip restaurant has been recognised for its environmental efforts; its produce is ethically sourced and caught in line with the Conservation Society's sustainable fishing policies.

In addition to their conventional fish and chips meals, the restaurant has an extensive menu with something suitable made in mind for everyone - including a senior's menu, children's menu and vegetarian dishes as well as everything from soups and starters to lighter bites, fried main courses, side orders, chef mains, desserts and homemade desserts and senior citizen specials. To wash these mouth-watering meals down, the restaurant also serves a wide range of drinks, including beers and lagers, ciders, spirits and aperitifs, liqueurs, mixers, wines, soft drinks, tea, coffee and many more.

Particularly popular foods are the breaded mushrooms, which are deliciously seasoned and served with a salad garnish & garlic dip, smoked haddock & prawn fishcakes and chicken Milanese (chicken breast wrapped in Parma ham accompanied with a creamy tomato, basil & mushroom based sauce).

There is, of course, the Mermaid's famous fish & chips – customers can choose either Icelandic cod or haddock, both of which are cooked to perfection. Specific dishes of interest are the Cod Loin, lightly drizzled with lemon juice and



served with fresh spinach, raisins & pine nuts, and the Basque-style chef special, which comes with mushrooms, red onions, peppers, tomatoes and olives.

We spoke to Sue Lodge who currently runs the Mermaid Fish Bar and asked her how she felt about achieving 42 years of excellence, to which she said, "It's always nice to be acknowledged for good service and for our fantastic food offerings. It's a true testament for everything we have achieved and for all the hard-work we have put into our restaurant to provide our customers with nothing but the best fish and chips in the area."

To meet with contemporary customer demands, the Mermaid Fish Restaurant can guarantee their consumers that they also source the finest quality fish produce available in Yorkshire. What's more, the restaurant has undergone numerous refurbishments with a state of the art frying range, specialist cooking equipment and is under the food management of a highly skilled and professional head chef, who has travelled to Reykjavik to further his experience by working in Iceland's most famous seafood restaurant.

All of the fish at the Mermaid Fish Restaurant is ethically sourced and they are proud supporters of sustainable fishing policies, keeping in line with the Marine Conservation Society.

**T +44 (0)113 253 5376**  
**[www.themermaidfishrestaurant.co.uk](http://www.themermaidfishrestaurant.co.uk)**



## KATHTON HOUSE NO ORDINARY RESTAURANT, NO ORDINARY FOOD!

Kathton House is an English fine dining restaurant serving locally produced food in elegant surroundings. The bright & classy interior is complimented by tasteful décor, and a wonderful cottage garden for those warmer days. The menu offers a selection of modern English & European dishes, and changes every four weeks for dinner and every week for lunch service.

### OPENING TIMES

Monday: Closed

Tuesday - Saturday: Lunch 12pm – 2pm (Last orders)

Dinner 7pm – 9pm (Last orders)

Sunday: Lunch only 12pm – 4pm (Last orders)



[www.kathtonhouse.com](http://www.kathtonhouse.com)

6 High Street, Sturry, Canterbury, Kent. CT2 0BD

01227 719999



*Our new tasting menu's is now available to see on our website.*

*You can also make Christmas and New Year's Eve gala dinner bookings there and see the menu.*

## Manufacturers of World-Leading Knife Sharpeners

The Knife Sharpener Guy was established as a solution to a problem: the lack of standardised, high-quality knife sharpeners capable of sharpening any knives. The Knife Sharpener Guy is truly proud to bring to consumers a world-first product which, once used, will become your go to knife sharpener no matter what your needs.

What really makes these knife sharpeners an essential product is the enormous cost to be saved, in comparison with buying an expensive set of chef's knives. The cost of the knife sharpener is a mere fraction of the cost of buying an expensive set of knives, making it a no-brainer. Propelling the company forward for all these years is their ethos of putting the customer first and doing right by the customer, a philosophy fully embraced by the entire team. It is no surprise, therefore, that a good deal of the Knife Sharpener Guy's custom comes from repeat business and referrals.

Most of all, however, it's their innovative products which continue to drive the company forward to continued success. With a true belief that their product is one of the best on the market, the Knife Sharpener Guy has spent a decade developing their product. They have covered every base, giving them full confidence in their product, and for good reason. Perhaps their most highly regarded product is their AnySharp Global device,



designed for specialised use in professional kitchens. The AnySharp Global is certified to food and hygiene safety standards.

Designed to effectively sharpen all of your knives, even serrated blades; the unique, patented AnySharp device uses tungsten carbide technology to extend the life of almost any knife. AnySharp works on virtually any knife, including expensive hardened steel knives and even serrated blades (such as bread knives and hunting knives). This truly is unlike any knife sharpener, steel or sharpening stone you've ever used. The results speak for themselves, so why not give it a go today.

For more information please contact;

**07910 944 826**

[www.theknifesharpenerguy.co.uk](http://www.theknifesharpenerguy.co.uk)

[steph@theknifesharpenerguy.co.uk](mailto:steph@theknifesharpenerguy.co.uk)




**Pip's Real Hot Chocolate is dedicated to the best hot chocolate for everyone**

What can be better than sitting back with a delicious hot chocolate?

The knowledge that it's made from REAL Belgian chocolate, not an instant powder mixed with goodness knows what.

There is so much emphasis on quality and range of artisan coffee, micro brew beers, specialist teas, but when it comes to hot chocolate people reach for the instant powder. Luxury means putting squirty cream and marshmallows on top, and whilst there's nothing wrong with that... you can be so much better to yourself.

Run by a chocolate artisan from his workshop in South Wales, Pip's Real Hot Chocolate Co changes the perception that this is okay, and pushes the need for quality hot chocolate in otherwise fantastic outlets, and at home! Pip's Real Hot Chocolate has options to cater to any diet, and almost every allergen, as they're trace-free of nuts and gluten with some recipes even have no sugar and soya.

Pip's also looking for Ambassadors around the country to help spread the love far and wide - he already ships to Canada!

**Try it today.**

To buy from the winner of Lux Life Magazine's Best Luxury Hot Chocolate Retailer 2018:

W: [pipschocolate.com](http://pipschocolate.com)

Or contact Pip about Wholesale/ Ambassador queries on [pip@pipsformilk.co.uk](mailto:pip@pipsformilk.co.uk)










## RICHARD A ROOKE

"Best Buys On The Spanish Costas"  
Multi Award-Winning International Property  
Consultant Established In Spain Since 1983

Established on the Costa Blanca for over 35 years, Richard A Rooke offers an extremely wide choice of meticulously selected properties at competitive prices.



### Golf Opportunities – Special Offers

New and resale golfcourse properties for sale in various locations on the Costa Blanca and Costa Calida, as well as other regions. Of special note, Las Colinas Golf and Country Club, La Manga, Roda, Villamartin, and Lo Romero.

### New Developments

Exceptional new-build opportunities already available, under construction, or built to order, in Mil Palmeras III, Torre de la Horadada and Las Colinas Golf Club.

### PROPERTIES FOR SALE • GOLF PROPERTIES NEW DEVELOPMENTS • INVESTMENTS • HOLIDAY RENTALS

Villas, townhouses, maisonettes, and apartments now for sale in one of the most popular locations at the moment on the Mediterranean coast.  
Fine sandy beaches and all the amenities one could ask for.

**CONTACT US NOW FOR INFORMATION.**



Email: [info@inmorichardrooke.com](mailto:info@inmorichardrooke.com)

[www.villavalue.com](http://www.villavalue.com) | Tel: 0034 965 320 024

Avda. de Francia, Edif. Playa 9.1.2, Urb.

Mil Palmeras 03190 Pilar de la Horadada (Alicante), Spain



### Chalet Blanc Châtel. Luxury Alpine Holidays

Just 90 minutes from Geneva airport by complimentary transfer, Chalet Blanc is ideally located to make the most of its beautiful surroundings and the vast Portes du Soleil ski domain. Far enough from Châtel centre to enjoy uninterrupted views and true peace and tranquillity but close enough to get to any of the lift stations and the town centre in only a few minutes. Chalet Blanc offers our guests the best of both worlds.

Five large, all en-suite bedrooms can sleep up to 14 guests in luxurious comfort whilst the enormous lounge with its roaring log fire, deep and comfy sofas and state of the art media system allows our guests the chance to find a quiet corner if they wish or to share a glass or two around the fire with friends and family.

There is a brand new hot-tub on the terrace with amazing views down the valley plus a sauna inside to help soothe away aching muscles after a hard day on the slopes. Our attention to detail will leave you wanting for nothing as our chefs serve you pre-dinner canapés with cocktails and champagne followed by a delicious gourmet 4-course dinner. Every other aspect of your holiday will be expertly taken care of by the team leaving you to enjoy the full potential of a holiday at Chalet Blanc.



Call: +33 6 76 37 40 91

Email: [info@chalet-blanc.co.uk](mailto:info@chalet-blanc.co.uk)

[www.chalet-blanc.co.uk](http://www.chalet-blanc.co.uk)

Chalet Blanc, Suvay

La Chapelle-D'Abondance,  
Rhône-Alpes, France

## Proficient and Affordable Property Care & Rental Service

Established in 2005 by Phil and Angeles Alvarez, AP Property provides all aspects of property management, including rental, buying and selling, as well as maintenance services for property owners.

"The aim of the company is to provide a personal service to all of our customers and clients," Phil tells us. "We help with all aspects of buying and selling with our trusted legal team, and we try to provide a complete after service for new buyers by obtaining any paperwork and helping with all aspects of owning property in Spain."

All of their apartments are located next to the Mar Menor, which is Europe's biggest saltwater lagoon. Separated by a 22km strip of land called La Manga, this great coastal lake of warm saltwater has a sublime microclimate, which has perfect conditions for water sports such as diving, snorkelling, sailing and surfing. The apartments are a short distance from Cabo de Palos, Cartagena, and the Nature Reserve Calblanque Regional Park, with plenty of restaurants, bars and pubs nearby.

AP Property also provides a professional service for people who are booking holidays and for owners who want their properties to be looked after. They are Tourist Board Registered, and all of their apartments are

catalogued with two keys and comply with all of the regulations established by the Region of Murcia. Their team of professional cleaners and maintenance staff ensure that each property in their care is looked after to the highest standard possible.

Offering excellent customer service for every step of the process, AP Property can support rental customers for their entire holiday. They can provide transport from the airport to the apartment, or if the customer makes their own way there, they will meet the guest at the property

in order to show them around. After this, they can pass on information about how everything works, as well as about local facilities and attractions including sports activities and car and bike rentals. Furthermore, AP Property are prepared to cater for any special needs if given advanced warning, and provide 24-hour help for guests during their stay.

For property owners, AP Property offers several maintenance packages, including key holding, cleaning, garden and pool maintenance, construction, renovation and redecorating. Every customer can guarantee that each apartment in AP Property's care is in the safest hands in the area.

**0034 655 162 326**  
[www.approperty.es/en](http://www.approperty.es/en)



Why should I choose AP Property to look after my property or to book my holiday?

Because at AP Property we like to think that we offer a good professional service to guests booking holidays and owners wanting their properties looked after.

We are Tourist Board Registered with number A.MU.250 and our apartments are catalogued with two Keys and comply with all the regulations established by the Region of Murcia. Therefore you can find us on the official website of Murcia Turística.

Together with our team of professional cleaners and maintenance staff we are able to provide well maintained and clean properties for yourselves and your guests where no job is too small or too big.

We can provide transport from airports to the property or if you choose to make your own way all guests are met at the property and shown the property and how everything in it works. We point you in the direction of all local facilities and can give you information on local activities.

At AP Property, if we have advanced warning of special needs we can see that your stay is made as comfortable as possible. We provide 24 hour back up to help in all aspects of life, so young and old know that if they need help it is available.

You will know that AP Property deal with you property or you book a holiday through us, your guests, family and friends will be taken care of throughout their stay. Our aim at AP Property is to ensure that you have a good clean maintained property in which to enjoy your holiday in and have the back up if things go wrong.

**For more information please  
contact us on;**

**Tel (0034) 655 162 326**

**Mail [info@approperty.es](mailto:info@approperty.es)**





## A fun-filled day out!

Located in the beautiful county of Rutland, Rutland Farm Park is a family run farm that offers guests a fun day out in the East Midlands.

The farm is located within the idyllic British countryside, situated on the remaining Noel estate that dates back to the Victorian era. Because of the property's age, the farm features a selection of Victorian farm buildings and structures, in addition to a range of exotic plants and blossoms, including rare Himalayan flowers and bamboo.

After a long closure that was caused by the infamous foot-and-mouth crisis in 2001, the farm re-opened last year due to popular demand. The farm's owners, the Ball family, wanted to welcome guests back onto their premises to encourage wildlife conservation and educate groups on the natural world.

The Ball family work hard to conserve rare species of livestock, preserving an array of unusual and endangered poultry and cattle. The family encourage visitors to ask questions about the animals and interact with breeds to learn and develop their knowledge on conservation. A member of staff will always be on hand to answer any questions and delve deeper into the breed's history, making it the ideal location for schools to learn and have fun.

The Farm is home to a flock of Lincoln Longwool sheep, a breed that has been reared since medieval times and produces 35lbs of wool in only one clipping. The farm is also home to one of the largest Friesian Holstein bullocks in the world, towering above guests at an impressive height of 7ft. In addition to these fantastic beasts, the farm also houses a host of farmyard animals, including: ducks, geese, goats, pigs, alpacas, llamas and much more.



Once guests have explored the farmyard, they can enjoy a drink and a bite to eat in the farm's Tea Room. The Tea Room is available to guests of the farm and to the general public, allowing everyone to enjoy a beverage and take in the gorgeous country scenery. The Tea Room can also accommodate groups of all sizes as the farm has generous on-site parking and plenty of indoor and outdoor tables.

It is important to note that all of the Tea Room's food is freshly prepared and caters to a variety of dietary requirements. This includes, but is not limited to: homemade cakes, ice creams, milkshakes, hot and cold drinks, baked potatoes and sandwiches. The Tea Room also organises a variety of events and occasions where the menu will change accordingly.

For any more information on the farm, or if you would like to view the farm's opening times, visit their website listed below. Alternatively, if you would like to book a table at the Tea Room or have any other specific enquires, telephone Rutland Farm Park on the number below.

**T: +44 (0) 1572 722 122.**

**E: [enquiries@rutlandfarmpark.co.uk](mailto:enquiries@rutlandfarmpark.co.uk)**

**W: [www.rutlandfarmpark.co.uk](http://www.rutlandfarmpark.co.uk)**

**Facebook: [www.facebook.com/rutlandfarmpark](https://www.facebook.com/rutlandfarmpark)**

### CASTLETOWN D-DAY CENTRE

#### Relive the D-Day Experience

Exciting new visitor attraction offering an immersive visitor experience, telling the story of embarkation from a busy wartime dockyard in 1944.

- \* Full size replica Spitfire
- \* Interactive displays
- \* Original uniforms, weapons & equipment
- \* Wartime vehicles
- \* Immersive audio/visual system
- \* Guided tours of a Sherman tank

#### ADMISSIONS

* Adult	£6.00
* Young Adult (Ages 12-17)	£4.00
* Children (under 12)	£3.00
* Family Group	£16.00

(2 adults plus 2 children or young adults)

Children under the age of 18 must be accompanied by an adult - with a maximum of 3 children per adult.

Dogs on leads are most welcome

**CASTLETOWN D-DAY CENTRE**  
Admiralty Buildings, Castletown,  
Portland, Dorset, UK DT5 1BD  
Tel: 07850 243 675  
[www.castletownddaycentre.com](http://www.castletownddaycentre.com)

# RUTLAND FARM PARK

Rutland Farm Park is a small, family-owned, working farm located in Rutland - England's smallest County.

The Farm Park has been in the family for five generations. On 10th September 2017 the Farm Park was once again reopened to the public having been closed since 2001.

We've got a range of friendly animals for you to see, from rabbits and guinea pigs, to sheep, horses and alpacas.

Come and see some of the rare breeds as well. We are focused on the conservation of these breeds, which no longer get the love and attention that they once used to. We want to change that.

You can also come and meet some of the animals that we have taken in and become a new home for.

Please contact **01572 722122**  
**[enquiries@rutlandfarmpark.co.uk](mailto:enquiries@rutlandfarmpark.co.uk)**  
**[www.rutlandfarmpark.co.uk](http://www.rutlandfarmpark.co.uk)**



# BEAUTIFUL FOUR BED-ROOMED STONE HOUSE



**Close to Mazamet in the South West of France a beautiful four bed-roomed stone house fully renovated, located in the commune of Pont de L'arn.**

**All rooms are South facing, overlooking a terrace with magnificent views of the Montagne Noir Mountains. The house features double glazing in all ground floor rooms and one bedroom. Electric heaters are located through out the house including two storage heaters and an air con unit.**

**The garden is flat and laid to lawn – suitable for a swimming pool – with a gravelled Terrace area and built in BBQ. There is a stone built workshop / storage 18m2 and three points of entry to the garden.**



**Judith81660@gmail.com**



## ENTIRELY RENOVATED WITH LARGE GARDEN

### Les Hortensias: A Beautiful French Property for Sale in the South of France

**L**es Hortensias is a stunning, semi-detached, traditional 18th century stone house situated close to the magnificently picturesque market town, Mazamet, in the commune of Pont De L'arn. This charming property is south facing, located within a hamlet, and on offer for as little as €229,000.

Within the 150m<sup>2</sup> grounds, the house boasts a large luxury kitchen with original granite slabs, classic beams, and most importantly a heavenly view of the surrounding French countryside. The house also contains an elegant dining room with a built in vintage cupboard and original pine floor.

Upon entry into the lounge it would be hard not to fall in love with the original fireplace and cosy wood stove, ideal for any peaceful winter's night in front of the fire. The lounge can also comfortably fit two long sofas, a selection of lounge tables and television.

Upstairs, the house offers 4 large handsome bedrooms, one of which contains a gorgeous en-suite with shower. All bedrooms overlook the spectacular La Montagne Noir, an impressive mountain range that offers some of the best views in the whole of France. From the garden, the mountain dazzles in the distance offering a remarkable view to those relaxing on the garden terrace, enjoying breakfast or dinner under the beautiful French Southern sun.

The garden itself covers 1800m<sup>2</sup>, a large space that could cater to a variety of different installations such as: climbing equipment for children, a swimming pool or Jacuzzi. In fact the flat land is perfect for a family game of football on a radiant French summer's day. The garden also features an old 18m<sup>2</sup> stone outbuilding, which could be used as a workshop, outdoor office or large garden shed.

The property is only 30 minutes from Castres, an arrondissement capital in the Occitane region, and one hour from Carcassonne International airport.

If you would like any more information on the property feel free to call Judith on the number listed below, or alternatively if you would like to view a selection of photographs, visit the website.



0033 563 61 95 56

[www.afranceproperty.com/France/Midi\\_Pyrenees/House/525](http://www.afranceproperty.com/France/Midi_Pyrenees/House/525)





Pine Tree Lodge, Next to Fairview  
Old Mill Lane, Oldbury  
Bridgnorth, Shropshire, WV16 5EQ

## Bridgnorth Holiday Cottages : Self Catering Accommodation

Two Bridgnorth holiday cottages that are the perfect self-catering holiday let for visitors to enjoy the historic market town of Bridgnorth, Shropshire and surrounding areas.

Pine Tree Lodge is a tastefully converted out building which now houses 2 semi-detached 1 bedroom Bridgnorth holiday cottages, No 1 & No 2. The Lodge is located down a single track lane in a very quiet semi rural village adjacent to horse paddocks. But it is less than a mile walk from the centre of the Bridgnorth and only 1/2 mile from The Severn Valley Railway. Both cottages have parking for two cars and their own private patio areas. A complimentary bottle of wine plus a bottle of milk, tea and coffee always await our guests to kick start their holiday.

The cottages are perfect for couples wanting to get away from it all. No 1 also has a sofa bed to accommodate a third person. Or reserve both cottages for the extended family or friends to come along too.

Dogs are also welcome (£5 per dog per night) and as well as the town walks, there are some nice country walks from the door. One of which passes Britains largest working water wheel at Daniels Mill only a quarter of a mile away, set in a wood beneath one of the Severn Valley Railway's viaducts then follows the River Severn in to town (approx 1 mile).

For more information please get in touch.

Call Us On 07773 888501 or email us at [info@pinetree lodgebridgnorth.co.uk](mailto:info@pinetree lodgebridgnorth.co.uk)

[www.pinetree lodgebridgnorth.co.uk](http://www.pinetree lodgebridgnorth.co.uk)



## Stone's Throw Cottage



Stone's throw  
Cottage  
5 Polkirt Hill  
Mevagissey  
St. Austell  
PL 26 6UR

+44 1726 844 605

Situated in the heart of lovely historic fishing village of Mevagissey, we are literally only a stone's throw away from the picturesque harbor with its fine pubs, restaurants and shops.

No matter if you're on holiday or on a business visit, you are cordially invited to our charming home - we want to give you an unforgettable time in this amazing landscape.

Just try us out!

[www.stones-throw-cottage-mevagissey.com](http://www.stones-throw-cottage-mevagissey.com)

## WL Whitstable Lavender

Whitstable  
Lavender



@lavendergiftman



@whitlavender

### How Whitstable Lavender began.

Barbara and I have always used lavender around the home for relaxing fragrant baths, massages, burns, aches and of course we have grown lavender plants in the garden.

In 1999 I picked some bunches of lavender flower heads and tried to steam them. To my surprise oil was produced! When I had used all the lavender plants from the garden, Barbara asked "where is all the water that was produced when you steamed the lavender plants?" My reply was down the drain!! "Oh Dear!" what a start! Barbara wanted to use it as linen water when ironing to make the bedding fragrant. We now stock Linen Water Spray in 250ml bottles and the Linen Water Refills in 500ml bottles.

After producing lavender oil and lavender water for a few years, our interest became greater, as did the amount of lavender flower heads given by friends, family and neighbours, plus many varieties of new lavender plants we had grown. It was now time to upgrade the still, stop using old whiskey bottles for the storing of lavender water and start using the correct bottles and labels etc. So the hobby grew. In late 2006 I started to develop lavender enhancing products, for example seed bags and pot pourri.

In 2007 we started to produce candles and soaps. Thanks to our customers, we are continuing to develop new product lines and grow the business. In November 2008, we moved into a small shop at 74 High Street Whitstable. Feel free to come and browse. Take as long as you wish whilst discovering over 400 lavender products. Many of our products are hand made in Whitstable. We now stock Greeting Cards (only available in our Whitstable shop) which are hand crafted locally.

Please note that as we have one of the smallest shops in the Conservation Area of Whitstable, access to our shop is only available via a small doorway and may not be suitable for wheelchairs, prams & pushchairs.

Happy Shopping, Colin and Barbara



## Explore Their Wide Range of Beautiful Products

Based in the idyllic seaside town of Whitstable, Kent, Whitstable Lavender stock an enormous range of lavender based products, the majority of which are lovingly handmade right there in Whitstable.

Whitstable Lavender grew into a successful business from a simple passion of owner Colin, who in 1999 picked some lavender heads from his garden and steamed them. To his surprise, the lavender produced oils easily. Much to the annoyance of Colin's business partner Barbara, he disposed of the leftover water down the drain! Things are certainly different now, with Whitstable Lavender boasting two decades of experience in utilising lavender for use in all manner of products, though at least one aspect has remained a constant: their passion for making products from lavender.

With over 400 products on sale, their range is truly astounding. From home accessories, health and beauty products, even to food products, Whitstable Lavender have you covered. Of particular note is their lovely gift range, ideal for all manner of special occasions. Their Gift Box 47, for example, contains: Lavender Bath Soak, Lavender Rose Heart Soap, Lavender Hand and Body Lotion, Lavender scented Oyster Candle, and Lavender Seeds in a small Organza Bag. All of these products come packaged in an appealing box, protected by straw.

If you can think of a necessity, the chances are Whitstable Lavender stock a wonderful version infused with their own twist. Their product range includes: arts and crafts, bath and shower, body, cologne, food, health, household, lavender bunches and seeds, lavender waters (body, foot, sleep, linen, pillows), men only, oils, sleep pillows, sleep spray, travel, weddings, and wheat bags



(microwavable). Some of these products lend themselves well to the infusion of lavender, whilst others prove an interesting and adventurous endeavour.

Whitstable Lavender's food range is of particular interest, proving a true testament to Colin and Barbara's intent to create innovative, beautiful products the customer is guaranteed to love. Try their lemon and ginger dipping sauce infused with lavender, their lavender honey, or their Best in Kent Award winning jam for a unique twist.

What's more, Whitstable Lavender are committed to being environmentally and socially responsible, with their packaging soon to be completely recyclable and their products completely handmade, organic, paraben and lanolin free and using only soya wax.

### Contact:

Tel: 01227 280065

Mob: 07772 208 631

Email: [info@whitstablelavender.com](mailto:info@whitstablelavender.com)

Web: [www.whitstablelavender.com](http://www.whitstablelavender.com)



## Enjoy well-earned quality time with family & friends...

Located in the very heart of Cornwall, Castle Holiday Park certainly is a gem; offering guests the chance to escape the hustle and bustle of everyday life and truly enjoy some quality time with family and friends.

Castle Holiday Park is located near St. Columb and boasts a fantastic number of attractions in its local vicinity and further afield. The park is situated next to the Iron Age Hillfort Castle-an-Dinas and the Goss Moor National Nature Reserve. So why not spend an afternoon taking in the fresh country air, exploring these fascinating and historically significant sites.

Guests truly are spoilt for choice for activities at Castle Holiday Park, so if you're a get-up-and-go kind of person, this location is ideal. Worthy of note is the world famous Eden Project, with its iconic biomes and stunning location, the Eden Project is a real winner; something everyone should experience at least once in their lifetimes.

The Eden Project is an ideal learning experience for children; though if you want something a little more adventurous, why not visit Camel Creek Adventure Park (complete with water slides and large indoor play areas), The Flambards (one of the most popular tourist attractions in the South West, complete with a Victorian Village and other similar attractions), and even Newquay Zoo. Those seeking more high-octane action might want to visit nearby Newquay for world-class surfing amongst a plethora of other activities.

What makes Castle Holiday Park so unique and wonderful is not just the attractions surrounding it; rather, it is the care taken to ensure guests



have a truly relaxing and peaceful stay - a major attraction of the Park. The Park itself is quiet, ambient and calm and this is no accident. Every step is taken to ensure guests have a relaxing time; from the layout of the caravans themselves (laid in such a manner that guests can enjoy their privacy and own space), to the exclusion of any loud bars or evening entertainment. There is, however, an indoor pool and children's play area (ensuring the kids won't be short of things to do).

Caravans are modern and come equipped with all the amenities necessary to ensure you can live your everyday life comfortably. Double-glazed windows and gas central heating ensures warmth and quiet; with the caravans also coming equipped with a fridge-freezer, full-size cooker, 3 bedrooms and a shower room with a basin and a toilet. As of now, there are also flats to rent in the castle itself!

Castle Holiday Park truly is for those who want to spend quality time with loved-ones and family and friends; because after all, what's more important than that?

**01726 890420**  
**[www.castleholidaypark.co.uk](http://www.castleholidaypark.co.uk)**  
**[enquiries@castleholidaypark.co.uk](mailto:enquiries@castleholidaypark.co.uk)**



*Looking for a home in the South West?*

Castle Holiday Park is a family run site in a sylvan setting, located in the heart of Cornwall.

The holiday park is a unique development offering modern caravans with gorgeous surroundings.

Much attention has been given to the arrangement of the site to preserve the rural mood and take maximum advantage of the pretty grounds. Castle Holiday Park was constructed alongside Goss Moor – an ancient heath and natural habitat for a variety of wildlife.

Castle Holiday Park is the perfect location for exploring Cornwall. Freedom to pursue your own interests is what caravan holidays are all about. Without the restrictions of a hotel and without set times for meals, you are truly able to unwind and relax, enjoying a carefree do-as-you-please vacation. We have a number of holiday homes for sale and to let, so take a look around and feel free to get in touch.

7 Miles of nature paths, cycle paths and is an idyllic location.

To make a booking, please visit the above site or get in touch by calling  
**01726 890420** or emailing [enquiries@castleholidaypark.co.uk](mailto:enquiries@castleholidaypark.co.uk)

**[www.castlecaravanpark.co.uk](http://www.castlecaravanpark.co.uk)**



*...Then look no further*



**itchup.com**

**HOLIDAY HOMES  
FOR SALE AND TO LET**

## LAVENDER COTTAGE

### The Award Winning Gem of Anglesey

**Lavender Cottage, which sleeps 6 and takes pets, has been planned exclusively to provide:**

Peace and quiet, comfort and quality throughout.

A comfortable and spacious lounge.

The owner has done everything possible to ensure that your stay is a thoroughly enjoyable experience and that you return again and again, which actually happens time and time again!

This is most definitely not one of those holiday homes where the absolute minimum is provided! Great effort has been taken to make available plenty of seating, side lights, occasional tables, pleasant soft furnishings, lovely pictures and in the kitchen department you should not want for anything.

There is even a roof garden with a fabulous sea view.



**FOR MORE INFORMATION, PLEASE VISIT  
OUR WEBSITE, CALL OR EMAIL US**

**[www.moelfreholidaycottage.co.uk](http://www.moelfreholidaycottage.co.uk)**

**01248 410295 | [info@gooddealmarketing.co.uk](mailto:info@gooddealmarketing.co.uk)**

## Beautiful Gifts Jewellery & Clothing



**01248 410295**



**@TwmPenStrydGiftShop**

TWM PEN STRYD



*A Touch of Island Magic*

Keith and Jan Roberts opened the shop way back in 1974 with the name "Moelfre Crafts" ... crafts being all the rage in those days. The original shop was really just a corrugated shack attached to the gable end of Pen Stryd. The shop prospered and in the late seventies a solid 2 storey extension was built on the site of the original shop. Due to Jan's ill health the shop was sold, but missing life in Moelfre was too much and they bought it back and reopened under the name "Twm Pen Stryd" in 2000. Once more the business prospered and it is now a very real haven for visitors and locals wanting a special friendly buying experience. Whilst jewellery is the mainstay of the business it only takes up about 10% of the space so with 4 rooms to fill the shop is full of quality gifts and interior furnishings.

Unlike many gift shops which just purchase from a few big companies, Twm Pen Stryd deals with a host of different suppliers and the stock is changing continuously, much to the satisfaction of its customers.

Two of the promotional phrases which best describe the experience of visiting the shop are ... "Welcome To A Touch Of Island Magic" and "You Are Invited Into The World Of Glamour And Glitter!"





# Modern and Charming Holiday Cottage in Beautiful Sennen Cove

Cornwall has long been a popular UK holiday destination, thanks to its wild coastlines and breathtaking beaches. With a history steeped in mining, fishing, and farming, it is full of charming coastal villages that provide an idyllic retreat from the rush of everyday life.

One such village is Sennen Cove on Cornwall's west coast. Whilst being a popular destination, it manages to avoid being overcrowded with tourists, unlike other destinations in the area. Retaining the ambiance of an old fishing village, it hosts a little harbour with its own fleet of fishing boats and has one of Cornwall's best stretches of golden sand. Whitesands beach is a popular spot with surfers and has its own local surfing club, and Sennen Cove beach and Gwenver beach are perfect for families and surfers alike. The ancient cove was once said to have been frequented by mermaids; these may have really been dolphins, which can still be seen in the crystal clear waters close to the coastline.

Nestled in this traditional Cornish village is Surf Cottage, an 18th-century former fisherman's cottage just two minutes' walk to Sennen Cove beach, half a mile from Land's End, and eight miles from Penzance. This fantastic property boasts a number of return customers, and it is easy to see why. With a garden which overlooks the beautiful coastline, the cottage is granite-built and is surrounded by high stone walls. The spacious living and dining area has stunning views of the coast and headlands, with a TV, DVD and CD player and a dining table that seats six.



There are three large bedrooms which comfortably sleep five people, including a double room with an en-suite, a twin room with a wash basin, and a third room with a large single bed. There is also an extra power shower downstairs, along with a WC and hand basin.

The surrounding area boasts plenty of little shops and cafés, pubs, galleries and a selection of excellent restaurants for evenings out. If you fancy a meal at home, however, Surf Cottage has a well-equipped kitchen to satisfy all of your culinary needs during your time away, as well as WiFi access and private parking. During the winter, you can be sure to stay cosy and warm in front of the open fire, and in the summer you can enjoy a meal or barbeque on the stone terrace whilst soaking up the Cornish sun and dazzling sea views.

As well as being close to local shops, Surf Cottage has easy access to walks along the South West Coast



Path, as well as being a short distance from a number of popular attractions including the Geevor Tin Mine, the Minack Theatre, St. Michael's Mount, the Levant Tin Mine, Tate St. Ives, and the Barbara Hepworth Museum.

A modernised and renovated property, Surf Cottage still manages to retain its traditional charm, and offers self-catering accommodation all year round. If you would like to take advantage of its stunning location and amenities, contact Cathy by using the details below.

**Please contact Cathy on  
Tel: 07979 241 421**

## Plan an Autumn Break

### Surfs Cottage, Sennen Cove

Granite built 16th Century Fisherman's Cottage, with surrounding high stone walls and mature garden overlooking stunning Sennen Beach and headland views. Just 2 minutes walk from Sennen sea shore. This small private home consists of 3 bedrooms, 1 en-suite. The large living and dining area overlooks the beach and headland.

A peaceful and tranquil cottage where you can enjoy a glass or two of wine on the lawn or stone terraced patios in the summer or the same in front of the large open fire in winter.

Set in beautiful surroundings with easy access to local shops as well as places such as St. Ives, Truro, Falmouth and Penzance. If you enjoy the many beaches, surfing and cliff top walks then this is for you with the added attraction of private parking.

Surf Cottage in Sennen Cove some 20 minutes' walk from Lands' End was one of the original buildings in Sennen Cove and was once a small thatched cottage surrounded by its own strawberry fields.



## Affordable fishing in beautiful surroundings

Llangollen Maelor Angling was established in 2011 after the merging of Llangollen Angling Association and Maelor Angling Club, both of which were formed in the early 20th Century by local fishing enthusiasts. Based in the stunning Dee valley in and around the town of Llangollen, which is a World Heritage Site and an Area of Outstanding Natural Beauty, Llangollen Maelor Angling control fishing on approximately ten miles of the Welsh Dee River.

We spoke to Huw Evans, who told us that the company's main goal is to provide "affordable fishing in beautiful surroundings," and they offer exactly that. As one of the purest rivers in Europe, the Welsh Dee is renowned for brown trout and grayling fishing, being one of the top rivers in the world for grayling. There are also good runs of salmon and sea trout throughout the season, and good coarse fishing for dace, chub, roach and pike can be found on their lower beat.

Offering spectacular scenery and world class fishing, there is no wonder that Llangollen Maelor Angling welcomes members and day trip visitors from all over the UK and Europe.

If you are intending on an extended fishing trip, then Llangollen Maelor Angling is perfectly located. There



are plenty of places nearby to stock up on fishing supplies, and there is a wide array of extra activities close to Llangollen to keep you occupied. They are a short drive away from Snowdonia National Park, the historic Roman city of Chester, and are only an hour away from Liverpool. The National Trust properties of Erddig, Chirk Castle and Powys Castle are all close by, and there are plenty of places to stay and eat in Llangollen town.

So, if you are looking for spectacular scenery and world class fishing, Llangollen Maelor Angling is the ideal destination. You can buy day tickets online or from their ticket outlets, and if you are interested in purchasing a membership, head to their website for more information.

**07984626158**

**www.llangollen-maelor-angling.com**

**For more information and to book please contact  
Email: cbksec@hotmail.co.uk or Tel: 07979 241 421**



Holiday News

the old bakery

bed and breakfast



**Welcome to The Old Bakery Bed and Breakfast**

**A Fabulous 5 Star Gold Award Bed and Breakfast in Pulham Market, Norfolk**

Come and stay at The Old Bakery in the beautiful South Norfolk countryside. You'll find us in the Waveney Valley village of Pulham Market, just 10 minutes away from the country market towns of Diss and Harleston. Pulham Market is a small but perfectly formed, quintessential Norfolk village, with traditional Village Green, charming period cottages, thatched roofs, two pubs and beautiful scenery.

The perfect location for a short break with beautiful countryside on the doorstep, plenty to do nearby and the lively city of Norwich with an abundance of live entertainment venues, historic architecture and excellent shopping a short drive away.

We aim to make every stay at The Old Bakery Bed and Breakfast special but if you're planning your visit to celebrate a special occasion or as a surprise for a loved one why not make it extra special with flowers, chocolates or a home baked cake waiting when you arrive.

If your stay is business related, or perhaps you're getting away to work in peace and quiet, we offer free WiFi internet access throughout the property. With our small but eclectic library The Old Bakery Bed and Breakfast would also make an ideal retreat to get away and work on that book, thesis, or journal article you've been meaning to write, we are, after all, only half an hour from Norwich, a UNESCO city of literature and home to the Writers Centre.

Visiting friends and family? Attending a wedding? Why rush around on a hectic schedule?

Give yourself time to explore, relax and discover beautiful Norfolk. Ask us about our special rates for stays of two or three nights over a weekend, why wouldn't you want to stay longer?



The Old Bakery, Church Walk, Pulham Market, Diss. Norfolk. IP21 4SL.

Tel: 01379 676492 | Email: [info@theoldbakery.net](mailto:info@theoldbakery.net)

From abroad: International Dialling Code +44 1379 676492



# KNIGHTS HOLIDAY HOMES

For a breath of fresh air and outstanding views, visit Kessingland, England's most easterly village and stay in one of our chalets nestled on the cliff top.

Dogs are welcome in most of our chalets and we do not charge any extra for their stay.

Bus service within 15 minute walk to chalets.

Train service to Lowestoft.

**CALL 07788 287 075**

**SEAVIEW CHALETs,  
GREEN LANE,  
KESSINGLAND**



Wedding News

Welcome to

# PERSONALISED

gifts by...



PERSONALISED GIFTS FOR WEDDINGS



Based in Tonbridge, Kent, we specialise in personalised gifts for those special occasions.

We also provide a professional engraving service adding that personal touch for your loved one.

You can be sure that each gift has been designed with you in mind, whether in the form of personalising the recipient's name, a full message or illustrating that special date.

So please browse our website today for the very latest in personalised gifts.

When you find that special gift we offer a simple, safe and easy to use checkout with a range of delivery options. Gifts can be gift wrapped and we can offer a personalised 'one off' coloured ribbon to complete the special event.

We offer a fantastic range of Ladies and Gents Limit watches, as well as bespoke jewellery. Our jewellery collection includes 9ct gold bracelets, earrings, necklaces and gold rings.

Our exclusive collection of gold and silver jewellery is stunning and provides perfect presents for your special someone.

**Gifts For the BRIDE**



**Gifts For the GROOM**



**Gifts For a CIVIL PARTNERSHIP**



**Personalised JEWELLERY**



For further information and details on our unique gift range and services please call today on

**Tel: 01732 363 165 | Email: [info@gtengravers.co.uk](mailto:info@gtengravers.co.uk) | Web: [www.gtgifts.co.uk](http://www.gtgifts.co.uk)**



# JONATHAN CUNDY PHOTOGRAPHY

I am a Wedding and Portrait Photographer primarily photographing Weddings covering all South Wales but i also travel into many areas in the United Kingdom and even further abroad...

I offer a very simple wedding package which you can add on to or if you want to tailor it please contact me and we can discuss your needs and find a solution

Please contact me to arrange a meeting to discuss your package requirements

**Contact : 07847533769**

**Or email : [Jon\\_Cundy@hotmail.com](mailto:Jon_Cundy@hotmail.com)**

**Wedding Package**

- A pre wedding consultation to go through all the details of your day
- All day coverage from the getting ready through to the evening reception
- A USB with your whole wedding gallery of 250 + high resolution images
- Every image Checked and edited before viewing
- Every Image comes with the permission to print until your hearts content
- A Sneak Peek photo the following day on Facebook to keep you going until your full gallery is ready for viewing



**www.jcimage.co.uk**

 [@Jonathan.Cundy.Photography](https://www.facebook.com/Jonathan.Cundy.Photography)

 [@jonathancundyphotography](https://www.instagram.com/jonathancundyphotography)



# JAYNE MARSHALL VOCAL COACHING

Jayne Marshall is a dedicated and talented Tutor and cares equally for all her Students and Pupils.

She has the ability not only to discover voices where people hadn't quite realised the natural voice that already existed within them, but to engage in further producing the sound they already have into something quite extraordinary with time, patience and skill.

Jayne's structuring process for all her students has proved itself time and time again in order that they may accomplish a much better and easier passage of speaking and singing without causing any tiredness or exhaustion. To be able to project our voice and communicate in an unconstrained and totally effortless manner is one of the best gifts we can bestow upon ourselves, no matter which professional path we are following.....so why hesitate?....And as an added bonus should various and unusual vocal disorders present themselves such as Thyroid Dysfunction, Tongue Displacement, a Slight Stammer, etc. Jayne is well informed in vocal therapy and recovery.

Throughout her Tutoring Career, Jayne has received many and various testimonials from her Students and we thought it nice to include one for you here... It reads:

*"Jayne is kind, nurturing, strong, passionate, insightful, creative, experienced, methodical, anecdotal, humorous and wise, you can be assured all her receive the utmost quality of teaching available. A bold claim perhaps but the knowledge Jayne has imparted and also the skills she has nurtured from me, with immense care and attention to detail is amazing. Jayne invigorates her students even at the inevitable Low Ebbs on their journey of discovering their Voices - The Voice being a Totally Personal Instrument. I know Jayne is able to guide anyone towards their desired goal from speech to singing and drama with kindness, and unrelenting passion and works tirelessly for us all, leading to the highs of singing and speaking freely with abandon. Jayne will always make you smile and who doesn't want a teacher like that."*

Jayne also draws on her own experience as a professional singer and actress and knows only too well how important preparation and physical strength are necessary requirements for success.

**She urges you....Go Forth...Make Contact....Follow your Heart....Enjoy...and most of all....Succeed.**

Please visit **[www.easyvocals.co.uk](http://www.easyvocals.co.uk)** or contact Jayne on **0208 399 9543** or **07773 018829**